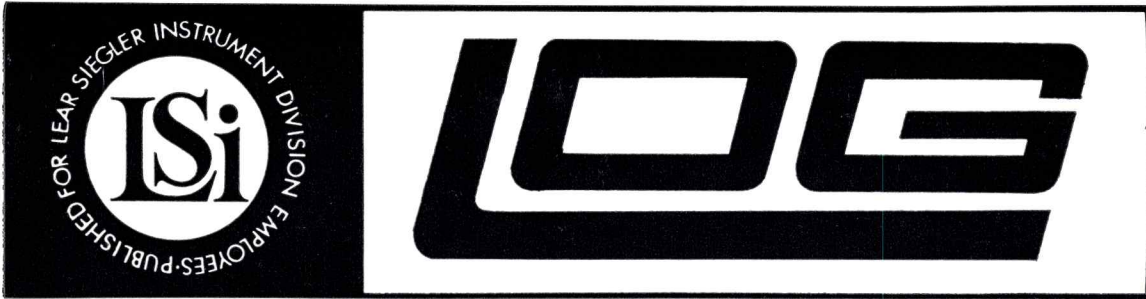
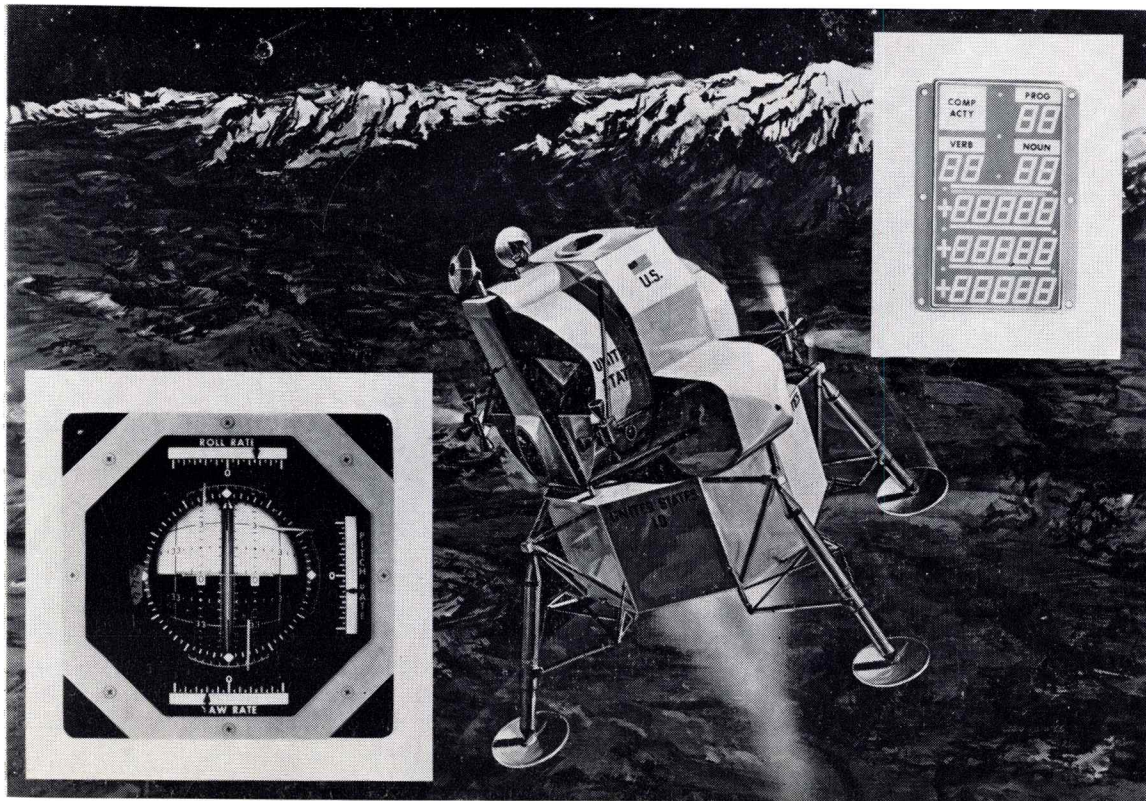


Well Done Columbia-Eagle-LSI!



U. S. POSTAGE
Bulk Rate
PAID
Permit No. 155
Grand Rapids, Mich.
49508

LSI Instruments Aid in Moon Landing



THESE TWO instruments, designed and produced by the Instrument Division of Lear Siegler, Inc., Grand Rapids, Mich., were among 11 other LSI instruments used by Astronauts Neil A. Armstrong and Edwin E. Aldrin, Jr., during the descent of the Lunar Module (LM) to the lunar surface on July 20. They also assisted the astronauts in the ascent from the moon's surface. Two LSI Attitude-Director Indicators (Model 4068E), left in picture, furnished the astronauts with pitch, roll and yaw attitude information during lunar flight, lunar landing and rendezvous with the Command Mod-

ule. In addition to displaying vehicle attitude errors, the error needles of the indicators provided heading information during the rendezvous portion of the mission. LSI's Model 8704A Guidance and Navigation Computer Display, right in picture, is a digital electroluminescent display used on the display keyboard assembly of the LM guidance system which gave the astronaut a coded readout of what he was programming into the computer and a digital readout of flight information.

Displays, Indicators, Gyros Made Here Were on Apollo 11

A solid state guidance and navigation computer display, two attitude-director indicators, two time delay-helium pressure instruments and four integrating rate gyros, designed and built by the Instrument Division were used by astronauts Neil A. Armstrong and Edwin E. Aldrin, Jr., during the descent of the Lunar Module (LM) to the lunar surface on July 20. They were among 17 instruments in use in the Apollo 11; 14 on the LM and three in the Apollo Command Module.

Four LSI 1903C integrating rate gyros were aboard the LM (Eagle) and were used for the LM antenna stabilization.

LSI's Model 8704A Guidance and Navigation Computer Display is a digital electroluminescent display used on the display keyboard assembly of the LM guidance system which gave the astronauts a coded readout of what they were programming into the computer and a digital readout of flight information.

Two LSI Attitude Indicators (Model 4068E) furnished the astronauts with pitch, roll and yaw attitude information during lunar flight, lunar landing and rendezvous with the Command Module (Columbia), piloted by Michael

Collins. In addition to displaying vehicle attitude errors, the error needles if the indicators provided heading information during the rendezvous portion of the mission.

The GASTA (5841E) (Gimbal Angle Sequence Transformation Assembly) was utilized to establish compatibility between the indicators and the inertial measurement unit (platform). Two (2464E) TDHP's (Time Delay-Helium Pressurization) were used in conjunction with pressurization of the descent engine fuel system.

Also supplied by LSI were digital electroluminescent displays for the Helium Temperature/Pressure Indicator (8701B) and the Propellant Quantity Indicator (8702A). These displays indicated the condition of the fuel system, so critical during both the descent and ascent phases of the lunar landing.

The Apollo Command Module contained three additional LSI-built solid state instruments. Two indicators, identical to those in the LM, provided a digital readout of the Guidance and Navigation Computer. The third indicator, Model 8701C, Delta Velocity Indicator, was used by the astronauts to perform mid-course corrections and for flight control information during the rendezvous and re-entry portions of the flight.

Check with Security on Trips Abroad

Are you a world traveler?
Do you have a security clearance?
Will you be visiting a Communist country?

If you answer "yes" to the above questions, please notify the Security Office within 30 days of your intended visit abroad. Industrial security requirements state that all cleared employees must notify their employer of such planned trips.

Faulkenberry, Krug at Cape

When Apollo 11 was launched from Cape Kennedy July 16, Instrument Division was represented by two of its engineering executives.

William Faulkenberry, vice president of Engineering, and Edwin H. Krug, manager of the Display Division, were at the Cape for the historic event.

2 Lose Lives In Car Crashes

Two LSI employees lost their lives recently as a result of separate auto accidents.

Mrs. Charles R. (Nancy Sarah) Reed III, of Data Processing, was killed around midnight Saturday, June 28, on M45 in Ottawa



Nancy Reed



Dick Trimble

County, when her car went out of control and rolled over. She was 34.

George R. (Dick) Trimble, of Manufacturing Engineering Division, died Wednesday, July 19, of injuries received in a one-car crash on June 14. He had been with LSI since December, 1939.

Mrs. Reed is survived by her husband, a former LSI employee; and their five children, Douglas, Virginia, Julia, Charles and Michele.

Mr. Trimble is survived by his wife, Laveria; sons, Gale and Dale; a daughter, Mrs. Arnold (Joyce) Cross; and 10 grandchildren.

Spencer, Warnock To Head Divisions

Two divisions here will be operating under new managers, one effective now and the other on Aug. 11.

Roy G. Spencer, major subcontract purchasing agent, has been promoted to head the Purchasing Division, succeeding Paul Kohler, who has left the company. Spencer joined Instrument Division as purchasing agent in 1965 after working at various purchasing jobs with Nortronics and Westinghouse.



Roy Spencer



Lyle Warnock

Fred W. Herr, manager of the Gyro Reference Division, is to become vice president of Engineering for the Astek Division of LSI located at Armonk, N. Y. Succeeding him at Instrument Division, effective Aug. 11, will be Lyle F. Warnock, Jr.

Herr joined Instrument Division in 1949, and previously had headed electro-mechanical development at the Tapco Division of TRW. Warnock joined LSI in September, 1959, and currently is manager of the Platform Department. He had been a senior development engineer with Honeywell.



Fred Herr

Enjoy Your Vacation

Vacation time is here. LSI will be closed for two weeks beginning July 28. Have fun . . . enjoy yourself . . . be careful . . . make it a safe vacation for yourself and your family. See you in August.

Benningfield, Mellinger Get New Posts

Robert L. Benningfield has been assigned the newly created position of staff assistant-manager Development, Manpower Planning and Utilization, and Wilbert G. (Bill) Mellinger, has been promoted



R. L. Benningfield



W. G. Mellinger

to manager-Salaried Personnel Department, it was announced this month by Robert R. Bergdahl, manager-Industrial Relations Division.

Benningfield formerly was Salaried Personnel manager, and Mellinger had been in charge of college recruiting and technical and professional employment, duties he will continue to direct in addition to heading the Salaried Personnel Department.

Benningfield will work closely with all levels of management in his new position to assure that activity is taking place through involvement of each manager, section head level and higher, to cause manager development, sound manpower planning and utilization and sound salary development, Bergdahl said. He joined LSI in January, 1966 as a salary administrator.

Mellinger joined LSI in October, 1960 as Engineering Personnel administrator.

By 1979, about 7000 general aviation planes are expected to be jet powered.

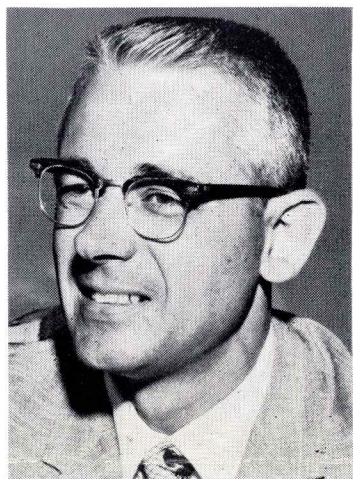
The old faithful DC-3 airliner is scheduled to disappear from the U. S. scheduled airline scene this year. The few regional airlines that are still using them will replace them with new jet equipment. More than a thousand of the DC-3's are still in service with free world airlines.

People & Events

The organization of the Management Systems Division has been restructured in order to fulfill the basic objectives of the Instrument Division, it was announced this month by Donald W. Evans, manager, Management Systems Division. The division is now composed of three line departments and three major staff functions.

Line department managers are Richard Zaideman, Administrative Systems; Robert Duff, Programming & Software; and Verner Kempinen, Data Processing. Richard Westover was named staff assistant to the division manager; and John Payette becomes manager, Management Systems Services. The third staff function is Master Projects Control.

Joseph Hendges has been transferred from special projects co-



Earns BA

Philip C. Nunn, project coordinator, Master Projects Control Staff, earned a Bachelor of Arts Degree from Aquinas College in June while participating in LSI's educational program. Under the program, tuition reimbursement is made upon successful completion of a course of study.

ordinator to the position of purchasing supervisor of Buying Group II, Electronic & Electrical-Mechanical Purchasing.

Charles L. Cohen has been named to the newly created position of director of Investor Relations for Corporate, it was announced this month by Robert L. Purcell, Corporate executive vice president. Cohen formerly was an officer of MSL Industries, Inc., and director of advertising and financial relations for the Celanese Corp.

American Avitron, representing LSI sales activities abroad, has opened an office at Los Angeles, it was announced this month by B. F. Endresen, president. Richard Therrien, formerly of TRW, will be in charge of Customer Services, including equipment and component sales to domestic and foreign airlines. The new office is located at the Airport Building, 8939 South Sepulveda Blvd., Los Angeles, Calif.

Common Stock Cash Dividend Increased Again

For the sixth consecutive year, directors of Lear Siegler, Inc., on July 18 voted to increase the cash dividend on LSI common stock.

The per-share dividend on common was raised to 12½ cents quarterly, or 50 cents annually. The company previously paid 11¼ cents quarterly, or 45 cents annually.

Directors also declared a regular quarterly cash dividend of 56¼ cents on LSI \$2.25 convertible preferred stock.

Both dividends are payable Sept. 3, 1969, to stockholders of record Aug. 8, 1969.

The dividend increase on common was consistent with past LSI increases. Previous raises were 10 cents annually but were prior to the 2-for-1 stock split effected by the company in November.

People at LSI



VERUYNCA BANKS, who joined LSI just last April, is secretary to William Stroh, manager, Gyro References. She hails from Kansas City, and attended the University of Kansas. She came to Grand Rapids in September of last year.

July Service Awards

Twenty-five-Year Award



Norma M. Becker

Fifteen-Year Awards

Receiving service awards in July for 15 years' service were Ronald R. Heckler, William C. Gould, Marlowe G. Pranger, Rose Uturo, Robert V. Gane.

Ten-Year Awards

Ten-year service awards in July went to Lorraine V. Razmus, Rose M. Mroz, Eilene Hurley, Phyllis VanHill, Eunice E. Preston, Salvador M. Lafata, Karol Szyngiera, Erwin Rosenberg, Norma Beardsley, Paul Guiles, Rita Meyer, Alvin Shoemaker, Delores Zandbergen, Cassie Talsma, Delores DeAllen, Angeline M. Goosen, Mary J. De Loof, Elizabeth J. Patt, Patricia Meyers, Russ Kautz, Jr., Joe Rakes, Alan B. Ranford, Paul Bergman, Wayne C. Lenartz, Russell Cosselmon, William J. Potgeter, Edward Zyskowski, Robert Ker-

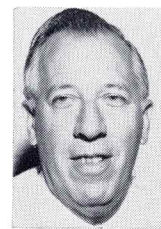
Twenty-Year Awards



L. E. Fleming



Evelyn Cowell



Norm Bosse



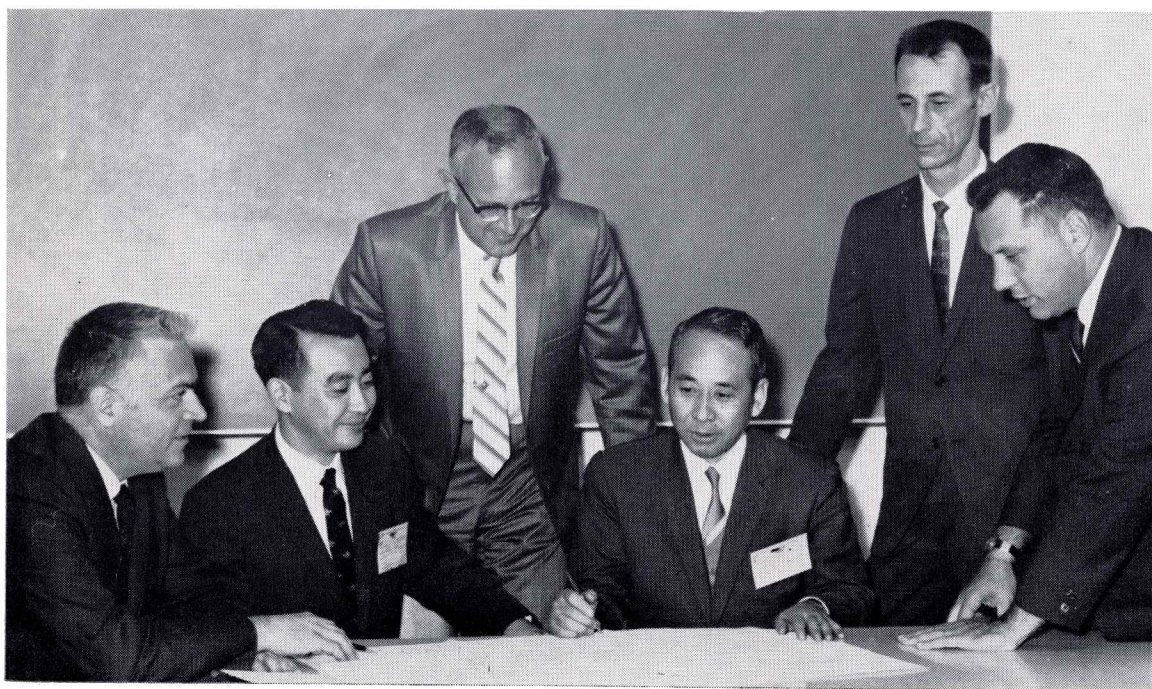
George DeVries



Lewis Crame

Two-Year Awards

Two-year service awards were earned by James Blaney, Robert B. Minor, Dick Prindville, James R. Kuiper, Joseph A. Juskewicz, Linda R. Bolhouse, William L. Lee, Robert H. Dykstra, Charlene L. Hodge, Harold L. Tyler.



Japanese Industry Executives Visit Here

Shin-ichi Nakao, chief of the Electrical Installations Designing Section, Nagoya Aircraft Works of Nagoya, Japan; and K. Umeda of New York City, representing Nozaki Associates, Inc., Aviation & Machinery Dept., of Japan, visited Instrument Division in July following an intensive system indoctrination on the F4J aircraft at McDonnell-Douglas. Their prime mission here was to obtain 5010BH system integration information that was

not available to them at McDonnell, and they also received a briefing on the 5010BE system which is being promoted for use on the Mitsubishi TX2 trainer. Shown at a briefing here are, from left, C. E. Sager, American Avitron; K. Umeda; Robert Wood, Reference Systems; Shin-ichi Nakao; Max J. Harnish, American Avitron; and William Stroh, Gyro References.



LOGISTICS

Sympathy

To *Paul Bergman*, Production Control on the loss of his father.

To *Armin Gallandt*, Center Lab, on the loss of his father. It was incorrectly reported last month that Armin's brother had died.

To *John O'Grady*, Incoming Inspection, on the loss of his father.

To *Billie Bok*, Instrument Assembly Inspection, on the loss of her mother.

To *Martha Treskey*, South Lab, on the loss of her father.

To *Henrietta Trucksis*, Purchasing, on the loss of her father-in-law.

To *Dave Ferguson*, Purchasing, on the loss of his father.

Engaged

Fred Gilhoran, Production Control, to *Frances Atchison*. No wedding date has been set.

Darlene Rokicke, Two Gyro Platform Assembly, to *Rick Ceglowski*. No wedding date has been set.

Marcia Blain, Support Logistics, to *Thomas L. Miller*. An Oct. 4 wedding is planned.

Joy Prefontaine, Data Processing, to *Mel Dean*. An August wedding is planned.

Married

Mary Anthony, daughter of *Doug and Katherine Anthony*, to *Jack Harthoun* on June 21. Mary's dad works in Support Logistics.

Bob Haverdink, Support Logistics, to *Linnay Rankins* on May 24.

Mamie Brewer, White Print, to *James Bridges* on June 28.

Hilda Hall, White Print, to *Bryce Doran* on June 26.

New Parents

A GIRL, *Carilyn Denise*, born to *Robert and Judith Bonzheim* on July 3. *Carilyn Denise* weighed 7 lbs., 13 oz. Dad works in Production Control.

A GRANDSON, *David Lee*, for *Gertrude VanSpyker*, born July 4. Grandmother is secretary to *Lloyd Lindland*, Production Control Division manager.

A GIRL, *Shelley Jo*, born to *John and Dianne Glerum* on June 17. *Shelley Jo* weighed 8 lbs., 3 oz. Dad works in Machine Shop.

A GIRL, *Susan Maxine*, born to *Ken and Beverly White* on June 7. *Susan Maxine* weighed 5 lbs., 9 oz. Dad works in Utility Fabrication.

A GRANDSON, *Lee W.*, for *Wes Martin*, Numerical Control, born to *Louis and Joyce Martin* on July 5. *Lee W.* weighed 7 lbs., 9½ oz.

A GRANDSON, *Michael Kowalczyk, Jr.*, for *Floyd Ives*, Center Lab.

A BOY, *Cord Allen*, born to *Ron and Terri Johnson* on July 6. *Cord Allen* weighed 9 lbs., 4 oz. Dad works in Purchasing.

A BOY, *Bryan Christopher*, born to *Ray and Judy Holland* on May 20. *Bryan Christopher* weighed 6 lbs., 12½ oz. Dad formerly worked in Inspection.

A BOY, *Michael Alan*, born to *Gene and Jorene Woodman* on May 8. *Michael Alan* weighed 7 lbs. Mother formerly worked in Engineering Standards.

A BOY, *Thomas W.*, born to *Bill and Marcia VanderMeulen* on June 20. *Thomas W.* weighed 8 lbs. Dad works in Analytical Engineering.

This 'N' That

MORE GRADUATES — *Barbara Brown*, daughter of *Marilyn Urbanski*, R & D Programs, graduated from *Thornapple-Kellogg-Middleville High School* in June; *Kathleen Sevic*, daughter of *Harriet Sevic*, South Lab, graduated from *Grand Rapids Junior College*; *Gary McClain*, son of *Jack McClain*, graduated from *Western Michigan University* with a major in English and plans to teach in the *Grand Rapids school system*; *Doug Engebretsen*, son of *Maynard Engebretsen*, Security chief, graduated from the *University of Michigan* in May; *David Wallace*, son of *Gary Visschers*, Support Logistics, graduated from *West Ottawa High School* in June; *Kathy Anthony*, daughter of *Doug Anthony*, Support Logistics, graduated from *Michigan State University*; *Polly Pritz*, daughter of *Tom Pritz*, Support Logistics, graduated from *Ottawa Hills High School*; *Joanne Fairchild*, daughter of *Nate Fairchild*, South Lab, graduated from *Godwin Heights High School*. The *Nate Fairchild* family had been hosting an exchange student from *Denmark*, *Beth Hoeg*, this year, and plan to take her on a trip to *Washington, D. C.*, before she returns to her home.

Also on the list of graduates was *Jeffrey L. Kremer*, son of *Mr. and Mrs. Leland F. Kremer*, from *East Grand Rapids High*. Dad is director of Marketing.

RAY LEYS, son of *Don Leys*, SRO, attended *Wolverine Boys State* at *Michigan State University* recently. *Wolverine Boys State* is sponsored by the *American Legion*, and *Ray* was representing the *Carl A. Johnson Post No. 2*.

THE CLASS B City Championship in the *Catholic Elementary Baseball League* was won by *St. Francis Xavier's Green Giants* on July 13. Their season record was 13-4. Manager and coach is *Paul Madura*, Production Control.

A FAREWELL DINNER was given at *Duba's Lounge* for *Hazel Lipes*, who retired after 18 years with the *Inspection Department*. A big time was had by all.

DEAN'S LIST — *Aleta Niewiadomski*, daughter of *John Niewiadomski*, Numerical Control, made the *Dean's List* at *Grand Rapids Junior College*. She also earned two scholarships for her second year of college.

ALSO ON DEAN'S LIST is *Delores McDonald Lamaster*, daughter of *Dottie McDonald*, South Lab, at *Anderson College*. *Delores* is planning to major in special education in sociology.

MARCIA FISK, daughter of *Jan Fisk*, Center Lab, was awarded a scholarship to the *University of Georgia* for a 6-week summer course in German and French. *Marcia* will be a senior at *Creston High School* next fall.

MICHAEL J. LYONS, son of *Cora Lyons*, South Lab, received the *Army Commendation Medal* for exceptionally meritorious achievement in Vietnam. Receiving an *Air Force Commendation Medal* for meritorious service in Alaska, was *Sgt. Gerald Robart*, son of *Ethel Sheler*, South Lab.

CYRIL NOWAK, Utility Fabrication, has been busy the past several weekends helping his elderly brothers, *Alonzo*, *Stanley* and *Joe*, build a new home at *Bear Lake Village*, since a fire destroyed their farm home at *Bear Lake* on May 11. *Cyril* also is busy making building plans for a new home



Off With the Beard

Cal VanHouton, of *Manufacturing Engineering Administration*, promised to shave his beard, which he had been cultivating since last December, if the first *LSI 4867 Computer Test Set* was completed and ready for shipment to a customer on schedule in July. The schedule was met, and *Cal* kept his promise. Shown doing the barbering honors are *Peggy Murawski*, left, of *Quality Control*, taking a firm grip on both *Cal* and the

razor, and *Jan Elderkin*, right, of *AGE Engineering*. Enjoying *Cal's* predicament are, from left, in background, *Robert Yoesting*, *AGE Engineering*; *Jim Habegger*, *AGE Engineering*; *Wayne Lenartz*, *Quality Control*; *John Rogers*, *AGE Laboratory*; and *John Heibel*, *AGE Engineering*. The *Computer Test Set*, ready for shipping, is at far right.



Former LSI Girl Is Airline Stewardess

Mary Ann Shotwell, second from left, formerly of the *Paint Shop*, second shift, and the daughter of *Mr. and Mrs. William Shotwell*, graduated from *Stewardess College* in *Fort Worth, Texas*, on June 18 and will begin a career as an *American Airlines stewardess*. She also was the recipient of the "Junior Birdman" Award, bestowed upon her by her stewardess classmates. This award is made to

the girl having those qualities that typify the ideal airline stewardess, such as poise, charm, personality, enthusiasm, and sense of humor. *Mary Ann* had graduated from *Union High School*. She is shown with her father, third from left, of *Support Logistics* at *LSI*; her mother; and *Miss Millie Alford* left, director of the *American Airlines Stewardess College* in *Fort Worth*.

for himself and wife, *Lucille*, in *Wyoming*.

NEW FACE in *Support Logistics* is *Penny Taylor*.

ON SICK LEAVE — *Marty De Young*, *Financial Control*, suffered a heart attack recently; *Hank Whilden*, *Lillian Grantham* and *Clara VanEss*, all of *South Lab*; *Ken McMullen*, *Augie Sypma*, and *Trudy VanDusen*, all of *Utility Fabrication*; *Helen Linington*, SRO, following an auto accident, and *Joan Hill*, *Gloria Schmuck*, *Dorothy Averill* and *Nellie VeenKant*, all of SRO.



The LSI LOG is published monthly by and for the Instrument Division of Lear Siegler, Inc. Primary news coverage is given to Instrument Division activities and employees and major corporate happenings.

4141 Eastern Ave., S. E.
Grand Rapids, Mich. 49508

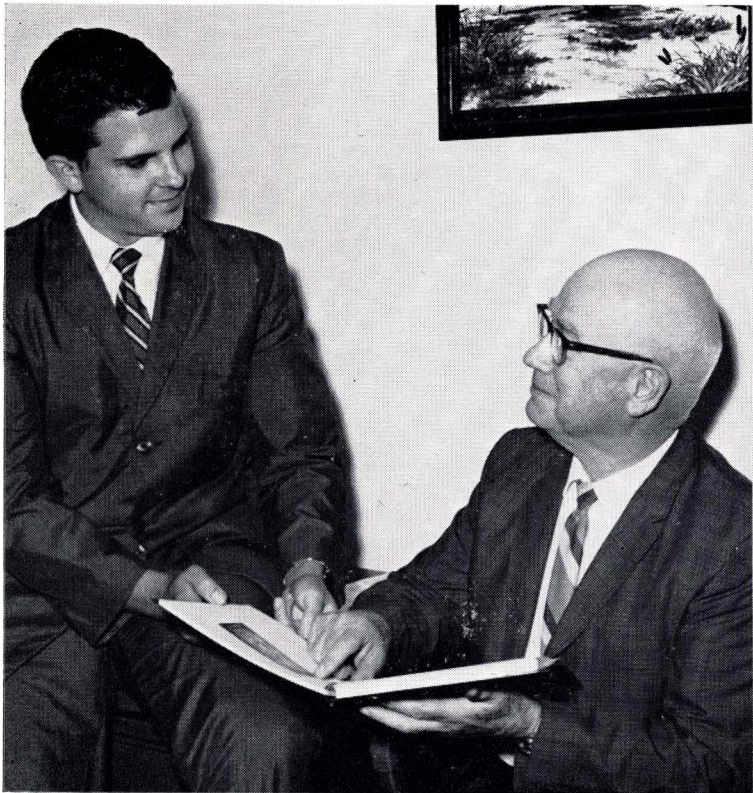
GEORGE R. MORSKI,
Editor

Member,
International Council
of Industrial Editors



The U. S. Department of Agriculture may acquire a sonic boom test chamber large enough to accommodate a cow or horse so as to experiment with the effects of sonic booms on farm animals.

Air West has changed its requirements that stewardess candidates be at least 5'2" tall. Young women only five feet tall are now eligible for training providing they can meet all other employment standards. The airline estimates that lowering the minimum height two inches adds another 200,000 potential candidates from which to make selections.



Happy Retirement, Shelly

Shelton (Shelly) Doane, right, training specialist with the Manufacturing Training Team, retired in July after 22 1/2 years with LSI. Shelly, at 62, plans doing some fishing, golfing and traveling with his wife, Regina, visiting friends and family scattered all over the country. He is shown reviewing a training program with John Odbert, Manufacturing Training Team manager.



Neil Hieftje Leaves

Neil Hieftje, center, of Utility Fabrication, left LSI in July following 14 years service. Wishing him the best are Walter Toth, right, Fabrication manager; and Wes Martin, Numerical Control and Utility Fabrication foreman. Neil, who is 68, said he has made no definite plans on how he will spend his retirement years.



Ski Club Wins Award

LSI's Edelweiss Ski Club received a plaque from the U. S. Ski Team for giving financial support to that organization. Phil Conley, right, club president, shows the plaque to Harry Whitfield, left, the club's senior advisor to its board of directors, and Shirley Lurtsema, club secretary. The club donated \$107. The plaque reads: "In recognition of loyal support of the U. S. Ski Team—1968-1969."



Last Day for Fred Oetjens

Fred Oetjens, center, receives a check and good wishes on his retirement on his last day in the Flex Shop last month. From left, are Gene Overlease, Flex Shop general foreman; Merlin Sipple, Flex Shop planner & coordinator; Wendell Jeffrey, Flex Shop foreman; and Ray Wasilewski, Union pension committeeman. Sipple was the man who hired Fred 20 years ago. Fred, who is 63, plans to work a little, he said, but most of his retirement time will be spent traveling and sight-seeing with his wife, Erma.

Union pension committeeman. Sipple was the man who hired Fred 20 years ago. Fred, who is 63, plans to work a little, he said, but most of his retirement time will be spent traveling and sight-seeing with his wife, Erma.

Over the Counter

For Sale

PLYMOUTH, 1964, two-door sedan, good condition, 6-cylinder, standard shift. \$500. Call CH 1-2181.

OLDSMOBILE, 1959, runs good, good tires. \$125. Call LE 4-8509 before 2 p.m.

RAMBLER, 1965, 660 Classic, automatic shift, 8-cylinder, good condition. \$700. Call 878-3211 after 4 p.m.

HALF-TON PICKUP, Chevrolet, 1956. Call LE 2-6174 after 3:30 p.m.

PONTIAC, 1967 Catalina, 2-door hardtop, power steering, brakes, vinyl top, excellent condition. \$1,800. Call 241-1044.

CHEVROLET, 1964 BelAir, 4-door, V8, Power Glide, radio. \$550. Call 949-5271.

OLDSMOBILE, 1963, 4-door hardtop. Reasonable. Call 534-8477.

CHEVROLET, 1964 Impala, automatic transmission and front end recently rebuilt. New shocks and springs. Excellent condition. Call 243-4921 after 5 p.m.

VOLKSWAGEN, 1965 convertible, new engine, beautiful condition, radio, etc. Call 452-8395.

TRUCK TIRE, size 6.50 x 16; six-hole wheel included. Excellent condition. \$12. Call 534-2938 after 4 p.m.

SUZUKI, 1969, 200cc, Red Scrambler with extras, like new condition. \$475 or best offer. Also BUMPER POOL TABLE. \$25. Call CH 5-6132 after 5 p.m.

MOTORCYCLE, Harley Davidson, 58, full dress. \$650. Call 452-8401 after 4:30 p.m.

MOTORCYCLE, 1968 Triumph TR6-650, excellent condition with two helmets. Must see to appreciate. Call 458-0337 before 3 p.m., or 459-6337 after 4 p.m.

TRAILBIKE, Harley Davidson, 1968, 125cc, 1,200 actual miles, like new condition. \$300 firm. Call 698-8675 after 5 p.m.

TORO POWER HANDLE, with snow blower and 25-inch-wide reel lawn mower attachments. Catcher for mower included. \$135 complete. Call 538-9131.

STANDARD CRIB and MATTRESS with bumper pad, \$20; convertible BUGGY and CAR BED, \$10. Call 538-9131.

RCA 21-INCH TV, floor model, walnut cabinet, ideal for rec room, apartment or mobile home. Two years old, excellent condition. \$125. Call 452-1910.

BASEBALL CATCHER'S EQUIPMENT. Includes shin guards, chest protector and mask, excellent condition. Fits boy age 10 to 15. Call 534-2938 after 5 p.m.

STEREO PHONOGRAPH, Zenith Circle of Sound, with stand, like new, \$150 or best offer. Call 241-2232 after 5 p.m.

MOVIE CAMERA, 18mm Kodak with zoom lens; also 18mm Bell & Howell MOVIE CAMERA and PROJECTOR. Call 245-7089 after 5 p.m.

DOLLS, Barbie, Ken, Skipper, all with clothes and house. Call LE 4-2615.

BASSET HOUND, 11 mos. old, male, AKC registered with papers, all shots, wonderful with children. New insulated dog house included. Reasonable. Call 532-0533.

GAS DRYER, Hamilton, used, good condition. \$25. Call 243-8996.

DRIVING HARNESS, 40-42 in., \$20; light weight pony RACING SULKY, \$35; HORSE WAGON, excellent condition, \$100. Call 361-6375 anytime.

FURNITURE, two-piece sofa, dresser, dinette set, end tables and misc. Call 532-0945.

HOLLY TRAVEL TRAILER, 24 1/2-foot with awning, self-contained, sleeps 7, like new condition. \$2,000 or make reasonable offer. Call 931-4402, Howard City.

BOAT TRAILER, 14-foot, \$50; CAMPER JACKS, \$30. Call EM 3-1074.

DOOR FRAME, DOOR & STORM DOOR, standard size. Call 949-5647.

WILL TRADE 33 horse JOHNSON 65 for larger motor. Has electric starter & choke, like new. Call 538-7489.

ROCKER, maple, new. \$15; BED, twin, metal frame, with off white plastic head board, like new. \$16. Call 677-1341.

SKYLINE TRAILER, 1967; 12' x 60', 3 bedrooms, fully carpeted, except kitchen, good condition. \$300 equity & take over payments of \$90 a month for balance of \$4,150. Call Byron Center 878-1176.

WIG, platinum blond, with case, short cut, never worn. Originally \$126, will sell for \$40. Call 866-2223.

LARGE LOT in Jenison on Astor, in area of fine homes, churches, shopping, schools. Call 361-0619.

BI-LEVEL HOME, in Glenwood Forest; patio, 3 bedrooms, large 2-car attached garage, fenced in pine tree yard. \$25,500 on 5 3/4% mortgage. \$113 monthly payments. Call 538-867.

HOUSE, BARN, GRANARY, 2 1/2 acres. \$8,000. Also LAKE FRONT LOTS. \$2,500. Acreage with lake frontage also available, 27 miles south of Grand Rapids. Call 538-8675.

RANCHER, 3 bedrooms, nice, roomy, with large 2-stall garage, fenced in backyard, quiet neighborhood, 10 minutes from LSI. Will rent or sell. LE 2-3891.

LOT, Parkside, N.W.; 90' x 121', city sewer & water. For sale or will trade for 50' or 60' mobile home. Call GL 3-5341 after 6 p.m.

GOOD FARM LAND, 80 acres, includes wood lot, in Fremont area. For more information call 534-6449 after 5 p.m.

COTTAGE, in Cadillac near lake, sleeps 6, furnished, good fishing and hunting. Call GL 9-0539.

FLORIDA LOT at Port Charlotte, 80' x 125', ready to build on or a good investment. Will discount for cash, or can arrange terms. May take a 14 or 15-foot boat as part payment. Also 2 ADJOINING LOTS, Graceland Memorial Park, choice location. \$250. Call 241-5704.

A CHINA CABINET, with glass shelves and front and two drawers beneath; nice DRUM TABLE; large open front STUDENT'S BOOKCASE; a new 6.70 x 15 TIRE & TUBE; a LAWN ROLLER & HAND MOWER (reel type). Call 949-4343.

GREAT DANE PUPPIES, fawn color, AKC. Call 363-7819.

For Rent

COTTAGES at Little Whitefish Lake. Write Camp Thunderhawk, Box 106, Pierson, Mich., or call 532-7627.

TRAVEL TRAILER, 18-foot Little Gem. \$50 a week. Call 698-6150.

NEW COTTAGES at Brooks Lake, will sleep six, nice for children, swimming and fishing. \$75 per week. Call GL 9-7029.

TENT, size 10' x 18', outside frame, two rooms. Call 363-0541 or 454-0467.

Wanted

TENT, prefer wall tent, 9' x 12' or near that size. Outside aluminum poles preferred. Call collect VE 4-5154.

AUTO PARTS — Set 425-435, set 427 HEADS for Chevrolet, and 127 IN-TAKE MANIFOLD, with or without carburetor for Chevrolet. Call UN 8-6654 after 5 p.m.

TWO BEDROOM HOUSE OR APARTMENT to rent by September. Prefer Godwin School District. Call 538-2954.

NIGHT STAND & CHEST, maple. Call 452-8886 after 5 p.m.

LAMBRETTA MOTOR SCOOTER (junk) for parts. Call 891-1569.



Perfect Shot

Bob Knott, of Purchasing, points with pride to the number 12 hole on his score card showing the hole-in-one he received while playing at Saskatoon Golf Course with the LSI Wednesday Night League. Bob said his tee shot on the 135-yard hole didn't feel "solid", and he thought he had cut the ball. The shot sailed low, hit the front of the green, then rolled directly into the hole. The ball wasn't cut. Bob was playing with partner Ev Featherly, Data Processing, and opponents Tom Hummel, Data Processing, and Dick Rademacher, Accounting. He finished the back nine with a par 37.