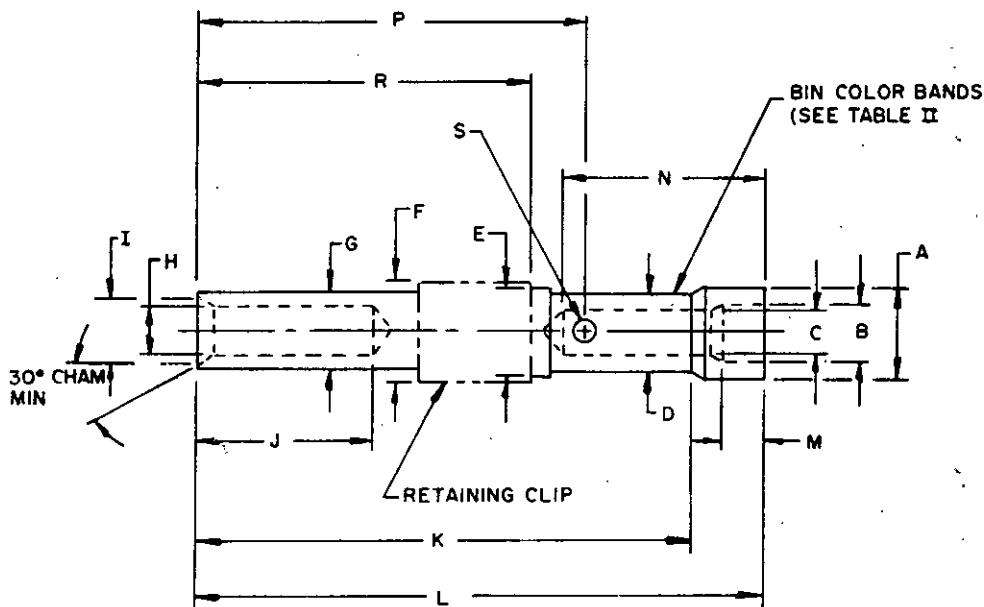


MILITARY SPECIFICATION SHEET

CONTACTS, ELECTRICAL CONNECTOR,
 SOCKET, CRIMP REMOVABLE, (FOR
 MIL-C-28748/4 AND MIL-C-28748/14 CONNECTORS)

This specification is approved for use by all Departments and Agencies of the Department of Defense.

The complete requirements for procuring the contacts described herein shall consist of this document and the latest issue of Specification MIL-C-39029.



NOTES:

1. Dimensions are in inches.
2. Metric equivalents are given for general information only and are based upon 1.00 inch = 25.4 mm.
3. Dimensions shown apply after plating.
4. Wall thickness of any part of contact shall be not less than .010 (.25 mm).

FIGURE 1. Dimensions and configuration.

(B) denotes changes

FSC 5935

TABLE I. Dimensions

| BIN code | A Dia | B Dia | C Dia | D Dia | E Dia | F Dia | G Dia | H DIA MIN | I Dia | J | K | L | M | N | P | R | S $\frac{1}{2}$ Dia |
|----------|----------------|----------------|----------------|----------------|----------------|----------------|----------------|------------------|----------------|----------------|-----------------|-----------------|----------------|----------------|-----------------|-----------------|---------------------|
| 274 | .121 (3.07) | .070 (1.78) | .048 (1.22) | .079 (2.01) | .119 (3.02) | .135 (3.43) | .101 (2.57) | .0415 (1.054) | .096 (2.44) | .312 (7.92) | .695 (17.65) | .771 (19.58) | .075 (1.90) | .265 (6.73) | .545 (13.84) | .510 (12.95) | .034 (.86) |
| | .119 (3.02) | .067 (1.70) | .044 (1.12) | .076 (1.93) | Max | Max | .099 (2.51) | | .090 (2.29) | .282 (7.16) | .675 (17.14) | .757 (19.23) | .055 (1.40) | .245 (6.22) | .525 (13.34) | .490 (12.45) | .028 (.71) |
| | .121 (3.07) | .070 (1.78) | .048 (1.22) | .079 (2.01) | .119 (3.02) | .135 (3.43) | .101 (2.57) | .064 (1.63) | .096 (2.44) | .312 (7.92) | .695 (17.65) | .771 (19.58) | .075 (1.90) | .265 (6.73) | .545 (13.84) | .510 (12.95) | .034 (.86) |
| 275 | .119 (3.02) | .067 (1.70) | .044 (1.12) | .076 (1.93) | Max | Max | .099 (2.51) | | .090 (2.29) | .282 (7.16) | .675 (17.14) | .757 (19.23) | .055 (1.40) | .245 (6.22) | .525 (13.34) | .490 (12.45) | .028 (.71) |
| | .121 (3.07) | .070 (1.78) | .048 (1.22) | .079 (2.01) | .119 (3.02) | .135 (3.43) | .101 (2.57) | .064 (1.63) | .096 (2.44) | .312 (7.92) | .695 (17.65) | .771 (19.58) | .075 (1.90) | .265 (6.73) | .545 (13.84) | .510 (12.95) | .034 (.86) |
| | .119 (3.02) | .067 (1.70) | .044 (1.12) | .076 (1.93) | Max | Max | .099 (2.51) | | .090 (2.29) | .282 (7.16) | .675 (17.14) | .757 (19.23) | .055 (1.40) | .245 (6.22) | .525 (13.34) | .490 (12.45) | .028 (.71) |
| 276 | .121 (3.07) | .095 (2.41) | .070 (1.78) | .112 (2.84) | .119 (3.02) | .135 (3.43) | .101 (2.57) | .064 (1.63) | .096 (2.44) | .312 (7.92) | .695 (17.65) | .771 (19.58) | .075 (1.90) | .265 (6.73) | .545 (13.84) | .510 (12.95) | .034 (.86) |
| | .119 (3.02) | .092 (2.34) | .066 (1.68) | .109 (2.77) | Max | Max | .099 (2.51) | | .090 (2.29) | .282 (7.16) | .675 (17.14) | .757 (19.23) | .055 (1.40) | .245 (6.22) | .525 (13.34) | .490 (12.45) | .028 (.71) |
| | .121 (3.07) | .095 (2.41) | .070 (1.78) | .112 (2.84) | .119 (3.02) | .135 (3.43) | .101 (2.57) | .064 (1.63) | .096 (2.44) | .312 (7.92) | .695 (17.65) | .771 (19.58) | .075 (1.90) | .265 (6.73) | .545 (13.84) | .510 (12.95) | .034 (.86) |
| 441 | .077 (1.96) | .057 (1.45) | .037 (.94) | .070 (1.78) | .077 (1.96) | .078 (1.98) | .061 (1.55) | .032 (.81) | .050 (1.27) | .195 (4.95) | .426 (10.82) | .464 (11.79) | .045 (1.14) | .145 (3.68) | .350 (8.89) | .288 (7.32) | .023 (.58) |
| | .044 (1.12) | .054 (1.37) | .034 (.86) | .067 (1.70) | .074 (1.88) | Max | .058 (1.47) | | .044 (1.12) | .175 (4.44) | .406 (10.31) | .444 (11.28) | .025 (.64) | .125 (3.18) | .330 (8.38) | .268 (6.81) | .017 (.43) |
| | .077 (1.96) | .057 (1.45) | .037 (.94) | .070 (1.78) | .077 (1.96) | .078 (1.98) | .061 (1.55) | .032 (.81) | .050 (1.27) | .195 (4.95) | .426 (10.82) | .464 (11.79) | .045 (1.14) | .145 (3.68) | .350 (8.89) | .288 (7.32) | .023 (.58) |

$\frac{1}{2}$ Hole - one wall locate on axial C_L within $\pm .008$ (.20 mm).

TABLE II. Design characteristics.

| BIN code | Color bands | | | Mating end size | Wire barrel size | Type | Class |
|----------|-------------|--------|--------|-----------------|------------------|-------|-------|
| | 1st | 2nd | 3rd | | | | |
| 274 | Red | Violet | Yellow | 20 | 20 | } A } | } A } |
| 275 | Red | Violet | Green | 16 | 20 | | |
| 276 | Red | Violet | Blue | 16 | 16 | | |
| 441 | Yellow | Yellow | Brown | 22 | 22 | | |

TABLE III. Tools.

| BIN code | Basic crimping tool | Positioner | Installing tool | Removal tool |
|----------|---------------------|--|-----------------|--------------|
| 274 | M22520/1-01 | M22520/1-03 Blue/Red | M81969/18-01 | M81969/20-01 |
| 275 | M22520/1-01 | M22520/1-03 Blue/Red | M81969/18-01 | M81969/20-01 |
| 276 | M22520/1-01 | M22520/1-03 Blue/Red | M81969/18-01 | M81969/20-01 |
| 441 | M22520/2-01 | Buchanan 615695, Daniels K280, or equivalent | M81969/18-02 | M81969/20-02 |

REQUIREMENTS:

Dimensions, design characteristics, and configuration: See FIGURE 1 and TABLES I and II.

Tools: See TABLE III.

- ⓑ Vibration: Method 2005 of MIL-STD-1344, test condition II.
 - ⓑ Shock (specified pulse): Method 2004 of MIL-STD-1344, test condition I.
- Mating contact: See MIL-C-39029/34.
- ⓑ QPL evaluating activity: Naval Avionics Center, Indianapolis, Indiana 46218

Military part numbers: See TABLE IV.

ⓑ TABLE IV. Military part number.

| BIN code | Military part number | Supersedes |
|----------|----------------------|-----------------|
| 274 | M39029/274 | MS17804-20-20 |
| 275 | M39029/275 | MS17804-16-20 |
| 276 | M39029/276 | MS17804-16-16 |
| 441 | M39029/441 | M39029/35-22-22 |

Custodians:

Army - CR
Navy - EC
Air Force - 85

Review activities:

Army - AR, MI, AT
Navy - AS, SH
Air Force - 11, 17, 99
DLA - ES

User activities:

Army - ME, AV
Navy - MC, OS
Air Force -

Preparing activity:

Navy - EC

Agent:

DLA - ES

(Project 5935-3097-7)

STANDARDIZATION DOCUMENT IMPROVEMENT PROPOSAL

INSTRUCTIONS: This form is provided to solicit beneficial comments which may improve this document and enhance its use. DoD contractors, government activities, manufacturers, vendors, or other prospective users of the document are invited to submit comments to the government. Fold on lines on reverse side, staple in corner, and send to preparing activity. Attach any pertinent data which may be of use in improving this document. If there are additional papers, attach to form and place both in an envelope addressed to preparing activity. A response will be provided to the submitter, when name and address is provided, within 30 days indicating that the 1426 was received and when any appropriate action on it will be completed.

NOTE: This form shall not be used to submit requests for waivers, deviations or clarification of specification requirements on current contracts. Comments submitted on this form do not constitute or imply authorization to waive any portion of the referenced document(s) or to amend contractual requirements.

DOCUMENT IDENTIFIER (Number) AND TITLE

MIL-C-39029/35-B

NAME OF ORGANIZATION AND ADDRESS OF SUBMITTER

VENDOR USER MANUFACTURER

1. HAS ANY PART OF THE DOCUMENT CREATED PROBLEMS OR REQUIRED INTERPRETATION IN PROCUREMENT USE? IS ANY PART OF IT TOO RIGID, RESTRICTIVE, LOOSE OR AMBIGUOUS? PLEASE EXPLAIN BELOW.

A. GIVE PARAGRAPH NUMBER AND WORDING

B. RECOMMENDED WORDING CHANGE

C. REASON FOR RECOMMENDED CHANGE(S)

2. REMARKS

SUBMITTED BY (Printed or typed name and address - Optional)

TELEPHONE NO.

DATE

DD FORM 1426
1 OCT 76

EDITION OF 1 JAN 72 WILL BE USED UNTIL EXHAUSTED.