

UNDS SYMBOLS:  
ARMY - AT, PC  
NAVY - MC, OS  
USAF

REVIEWER SYMBOLS:  
ARMY - AV, MI, AR  
NAVY - EC, SH  
USAF - 11, 99

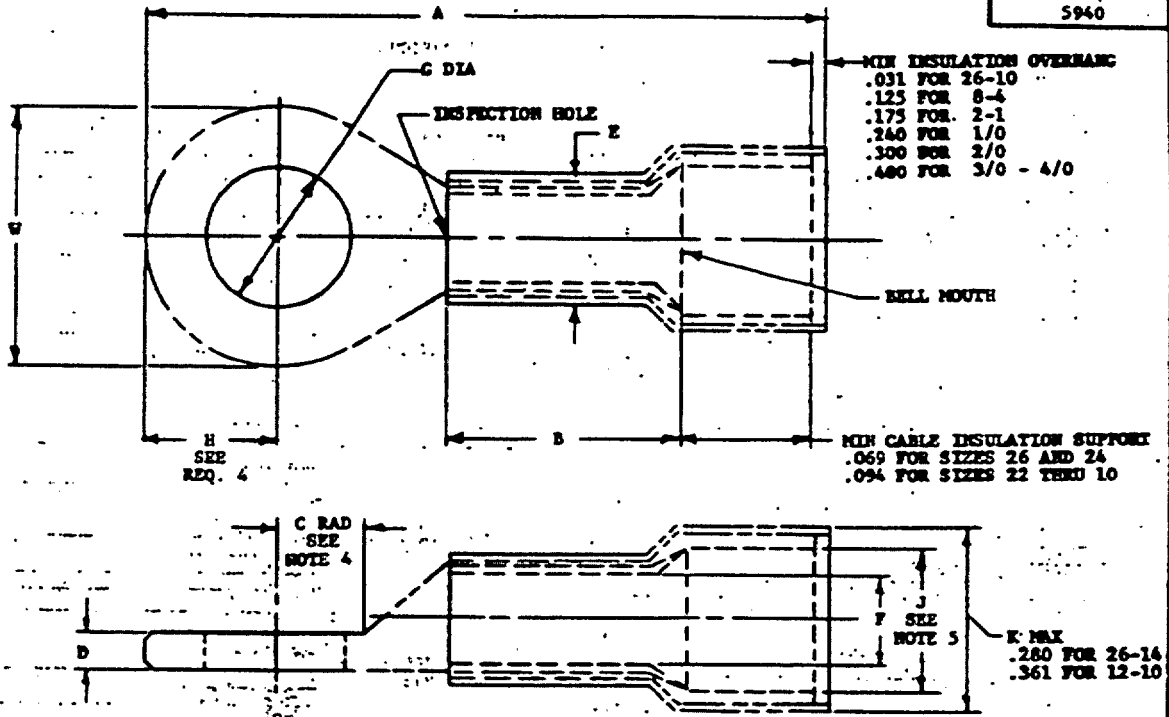


TABLE 1. METRIC CONVERSIONS

INCH	MM	INCH	MM	INCH	MM	INCH	MM	INCH	MM
.022	0.56	.133	3.38	.260	6.73	.410	10.19	.598	15.19
.027	0.69	.138	3.51	.275	6.99	.418	10.62	.605	15.37
.028	0.71	.139	3.53	.276	7.01	.425	10.80	.610	15.49
.030	0.76	.142	3.61	.280	7.11	.430	10.93	.620	15.75
.031	0.78	.142	3.61	.290	7.37	.435	11.05	.622	15.80
.033	0.84	.150	3.81	.296	7.52	.437	11.10	.623	15.82
.035	0.89	.152	3.86	.300	7.62	.438	11.13	.625	15.88
.037	0.94	.153	3.89	.302	7.67	.450	11.43	.630	16.00
.038	0.97	.156	3.96	.305	7.75	.453	11.51	.645	16.38
.043	1.09	.160	4.06	.308	7.82	.458	11.63	.648	16.46
.047	1.19	.164	4.17	.310	7.87	.460	11.68	.668	16.97
.052	1.32	.168	4.27	.3125	7.94	.473	12.01	.680	17.27
.054	1.37	.171	4.34	.315	8.00	.478	12.14	.685	17.40
.069	1.75	.175	4.46	.317	8.05	.480	12.19	.690	17.53
.070	1.78	.176	4.47	.320	8.13	.500	12.70	.700	17.78
.073	1.85	.178	4.52	.323	8.20	.503	12.78	.705	17.91
.075	1.91	.186	4.72	.328	8.33	.505	12.83	.711	18.06
.081	2.06	.190	4.83	.330	8.38	.510	12.95	.718	18.24
.084	2.13	.193	4.90	.338	8.59	.513	13.03	.720	18.29
.085	2.16	.198	5.03	.343	8.71	.516	13.11	.729	18.52
.086	2.18	.202	5.13	.350	8.89	.520	13.21	.734	18.64
.090	2.29	.203	5.16	.355	9.02	.525	13.34	.740	18.80
.094	2.39	.208	5.28	.360	9.14	.536	13.61	.750	19.05
.095	2.41	.210	5.33	.361	9.17	.540	13.72	.755	19.18
.096	2.44	.215	5.46	.365	9.27	.547	13.89	.774	19.66
.098	2.49	.222	5.64	.370	9.40	.550	13.97	.783	19.89
.109	2.77	.227	5.77	.375	9.53	.557	14.15	.790	20.07
.112	2.84	.230	5.84	.380	9.65	.560	14.22	.802	20.37
.114	2.90	.232	5.89	.383	9.73	.565	14.35	.804	20.42
.120	3.05	.234	5.94	.385	9.78	.570	14.48	.810	20.57
.122	3.10	.238	6.05	.386	9.80	.573	14.55	.815	20.70
.125	3.18	.240	6.10	.388	9.86	.577	14.66	.840	21.34
.126	3.20	.245	6.22	.398	10.11	.580	14.73	.850	21.59
.129	3.28	.250	6.35	.400	10.16	.590	14.99	.853	21.67
		.253	6.53					.855	21.72
		.260	6.60					.860	21.84
								1.330	34.58

FOR DESIGN FEATURE PURPOSES, THIS STANDARD TAKES PRECEDENCE OVER ACQUISITION DOCUMENTS REFERENCED HEREIN.  
REFERENCED DOCUMENTS SHALL BE OF THE ISSUE IN EFFECT ON DATE OF INVITATIONS FOR BID.

Ⓢ DENOTES CHANGE

P.A. NAVY - AS Other Comd	INTER- NATIONAL INTEREST SEE NOTE 9	TITLE TERMINAL, LUG, CLAMP STYLE, COPPER, INSULATED, RING TONGUE, BELL-MOUTHED, TYPE II, CLASS 1, (FOR 105°C TOTAL CONDUCTOR TEMPERATURE)	MILITARY STANDARD <b>MS25036</b>
ARMY - ER USAF - 85		SUPPLEMENT MS25124 AS DWG 52A3B212	SHEET 1 OF 3
ACQUISITION SPECIFICATION MIL-T-792B			

APPROVED FOR PUBLIC RELEASE; DISTRIBUTION IS UNLIMITED.

Review user information to correct as of the date of this document.  
For factory coordination of changes to this document, draft identification  
should be based on the information in the current drawing.

This military standard is approved for use by all Departments  
& Agencies of the Department of Defense. Solicitation for all use  
engineering and design applications and for resubmission and shall  
be made from this document.

APPROVED 25 MAY 53 REVISED 28 FEB 74 19 JAN 01 19 FEB 86 8 DEC 86

TABLE II. DIMENSIONS

DASH NO.	TERMI- NAL SIZE	STUD SIZE	A MAX	R MIN	C MIN RAD	D		E DIA	F DIA	G DIA		J MIN DIA	W		INSU- LATING SLEEVE COVER
						MAX	MIN			MAX	MIN		MAX	MIN	
143	26-24	2(.086)	.740	.126	.133	.028	.022	.215	.033	.098	.090	.084	.210	.133	YELLOW
144		4(.112)	.755		.171					.122	.114		.260	.193	
145		6(.138)	.855		.202					.152	.142		.330	.245	
146		8(.164)	.865		.227					.178	.168				
147		10(.190)	.865							.203	.193				
149	22-18	2(.086)		.156	.115	.035	.027	.215	.073	.098	.090	.120	.230	.198	RED
148		4(.112)	.755		.122					.114					
101		6(.138)	.790		.125										
102		8(.164)	.865		.202										
103		10(.190)	.930		.234										
150		1/4(.250)	1.090		.265										
104		5/16(.3125)	1.320		.296										
105		3/8(.375)	1.320		.328										
151	1/2(.500)		.453												
152	16-14	4(.112)	.774	.156	.125	.035	.029	.240	.095	.122	.114	.153	.260	.240	BLUE
106		6(.138)	.815		.152					.142					
107		8(.164)	.910		.202										
153		10(.190)	.955		.234										
154		1/4(.250)	1.085		.265										
109		5/16(.3125)	1.225		.296										
110		3/8(.375)	1.225		.328										
155		1/2(.500)	1.320		.453										
111	12-10	6(.138)	1.120	.234	.202	.043	.037	.300	.139	.152	.142	.210	.380	.365	YELLOW
156		8(.164)	1.120		.234										
112		10(.190)	1.322		.265										
157		1/4(.250)	1.322		.296										
113		5/16(.3125)	1.414		.328										
114		3/8(.375)	1.414		.453										
158	1/2(.500)														
115	8	10(.190)	1.402	.315	.234	.084	.038	.350	.186	.203	.193	.257	.429	.386	RED
116		1/4(.250)	1.468		.265										
117		5/16(.3125)	1.544		.296										
118		3/8(.375)	1.544		.328										
119	6	10(.190)	1.599	.375	.234	.084	.043	.410	.232	.203	.193	.310	.503	.460	BLUE
120		1/4(.250)	1.762		.265										
121		5/16(.3125)	1.762		.296										
122		3/8(.375)	1.762		.328										
123	4	1/4(.250)	1.812	.437	.276	.096	.047	.500	.290	.275	.260	.370	.570	.480	YELLOW
124		5/16(.3125)	1.879		.308										
125		3/8(.375)	1.879		.328										
126	2	1/4(.250)	2.069	.505	.343	.109	.054	.510	.355	.275	.260	.453	.711	.668	RED
127		3/8(.375)	2.269		.453										
128	1/2(.500)	2.269													
129	1	1/4(.250)	2.150	.565	.383	.125	.070	.620	.398	.275	.260	.500	.783	.740	CLEAR TO WHITE
130		3/8(.375)	2.370		.453										
131	1/2(.500)	2.370													
132	0	1/4(.250)	2.401	.630	.418	.125	.070	.685	.458	.275	.260	.550	.853	.810	BLUE
133		3/8(.375)	2.525		.453										
134		1/2(.500)	2.525												
135	00	5/16(.3125)		.700	.473	.129	.075	.755	.520	.338	.323	.610	.956	.913	YELLOW
136		3/8(.375)	2.750		.473										
137		1/2(.500)	2.750												
138	000	3/8(.375)	3.000	.718	.513	.140	.085	.840	.577	.400	.385	.680	1.053	1.010	RED
139		1/2(.500)	3.000												
140	0000	3/8(.375)	3.330	.734	.560	.150	.095	1.000	.645	.400	.385	.750	1.148	1.095	BLUE
141		1/2(.500)	3.330												

APPROVED 23 May 53 REVISED 2 FOR CHANGES SEE SHEET 3

P.A. NAVY - AS Other Cost	INTER- NATIONAL INTEREST SEE NOTE 9	TITLE TERMINAL, LUG, CRIMP STYLE, COPPER, INSULATED, RING TONGUE, BELL-MOUTHED, TYPE II, CLASS 1. (FOR 105°C TOTAL CONDUCTOR TEMPERATURE)	MILITARY STANDARD
			MS25036
ACQUISITION SPECIFICATION ML-T-7928	SUPERSEDES MS25124 AS DWG 52AB212	SHEET 2 OF 3	

REVIEWER SYMBOLS:  
ARMY - AT, IG  
NAVY - MC, OS  
USAF  
ARMY - AV, MI, AR  
NAVY - EC, SH  
USAF - 11, 99

\*Action/Date information is carried on the end of this document.  
For revised coordination of changes to this document draft drawings  
shall be based on the information in the current 000000.

This military standard is approved for use by all Departments  
& Agencies of the Department of Defense. Selection for all new  
engineering and design applications and for reordering use shall  
be made from this document.

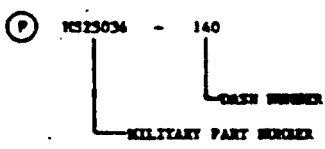
**REQUIREMENTS:**

1. MATERIAL: SEE ACQUISITION SPECIFICATION.
2. INSULATION MATERIAL: SEE ACQUISITION SPECIFICATION.
3. FINISH: TIN PLATED, SEE ACQUISITION SPECIFICATION.
4. "T" MAX AND MIN DIMENSIONS SHALL BE ONE HALF OF "U" MAX AND MIN DIMENSIONS, RESPECTIVELY.
5. AVERAGE DIAMETER OF "T" AND "Y" SHALL BE WITHIN SPECIFICATION DIMENSIONS; MAX AND MIN DIMENSIONS DUE TO OVALIZATION SHALL BE WITHIN 3% OF SPECIFICATION REQUIREMENTS.
6. QUALIFICATION: FOR QUALIFICATION, TERMINALS SHALL BE TESTED WITH ANY ONE OF THE FOLLOWING WIRES:  
MIL-W-5086; MIL-W-16678 EXCEPT /3, 8, 9 OR 10; MIL-W-22759/1, 9, 11 OR 10; AND TOOLING AS FOLLOWS:  
MIL-C-22520/5-01 TOOLING WITH MIL-C-22520/5-100 DIES INSTALLED FOR SIZES 26 THRU 10 TERMINALS, OR  
MIL-C-22520/10-01 TOOLING WITH MIL-C-22520/10-101 DIES INSTALLED FOR SIZES 26 THRU 14 TERMINALS AND  
MIL-C-22520/10-100 DIES INSTALLED FOR SIZE 12 THRU 30 TERMINALS. MS23002 CRIMPING DIES TO BE USED  
WITH MS25441 TOOL FOR SIZE 0 THRU 4/0. ABOVE SPECIFIED TOOLS SHALL BE USED FOR QUALIFICATION  
TESTING. EXISTING MS90413 AND MS3316 TOOLS IN THE FIELD MAY BE USED UNTIL WORN OUT.

**NOTES:**

1. DIMENSIONS ARE IN INCHES.
2. REMOVE BURRS AND SHARP EDGES.
3. METRIC EQUIVALENTS (TO THE NEAREST .01 mm) ARE GIVEN FOR GENERAL INFORMATION ONLY AND ARE BASED UPON 1 INCH = 25.4 mm.
4. "C" MIN DIMENSION IS MIN WASHER CLEARANCE RAD.
5. DIMENSION "J" REPRESENTS THE MIN OPENING THAT WILL ACCEPT THE FINISHED WIRE.
6. CONTOUR INDICATED BY PHANTOM LINES MAY VARY FROM THAT SHOWN TO SUIT INDIVIDUAL MANUFACTURER'S DESIGN.
7. INSULATION SUPPORT AND TERMINAL BARREL MAY BE MULTIPLE PIECE CONSTRUCTION.
8. WIRE IDENTIFICATION SHALL BE FACILITATED BY BELL MOUTH.
9. CERTAIN PROVISIONS OF THIS STANDARD ARE THE SUBJECT OF INTERNATIONAL STANDARDIZATION AGREEMENT (ASCC AIR STD 12/4). WHEN REVISION OR CANCELLATION OF THIS STANDARD IS PROPOSED WHICH WILL AFFECT OR VIOLATE THE INTERNATIONAL AGREEMENT CONCERNED, THE PREPARING ACTIVITY WILL TAKE APPROPRIATE RECONCILIATION ACTION THROUGH INTERNATIONAL STANDARDIZATION CHANNELS, INCLUDING DEPARTMENTAL STANDARDIZATION OFFICES, IF REQUIRED.
10. INTERCHANGEABILITY RELATIONSHIP:  
PART NUMBERS MS25036-101 THRU -158 CAN REPLACE THE CANCELLED MS25036-1 THRU -58 PARTS RESPECTIVELY. THE CANCELLED MS25036-1 THRU -58 PARTS CANNOT ALWAYS REPLACE THE MS25036-101 THRU -158 PARTS.

**EXAMPLE OF PART NUMBER:**



APPROVED 25 MAY 53 REVISED FOR CHANGES SEE SHEET 3

P.A. NAVY - AS Other Com ARMY - EA USAF - 85	INTER- NATIONAL INTEREST SEE NOTE 9	TITLE TERMINAL, LUG, CRIMP STYLE, COPPER, INSULATED, RING TONGUE, BELL-MOUTHED, TYPE II, CLASS 1. (FOR 105 °C TOTAL CONDUCTOR TEMPERATURE)	<b>MILITARY STANDARD</b>	
			<b>MS25036</b>	
ACQUISITION SPECIFICATION MIL-T-7928		SUPERSEDES: MS25124 AS DNG 52AR212		SHEET 3 OF 3

DD FORM 672-1 (Coordinated)

PREPARED BY THE MILITARY STANDARDIZATION AUTHORITY

PLATE NO. 2288