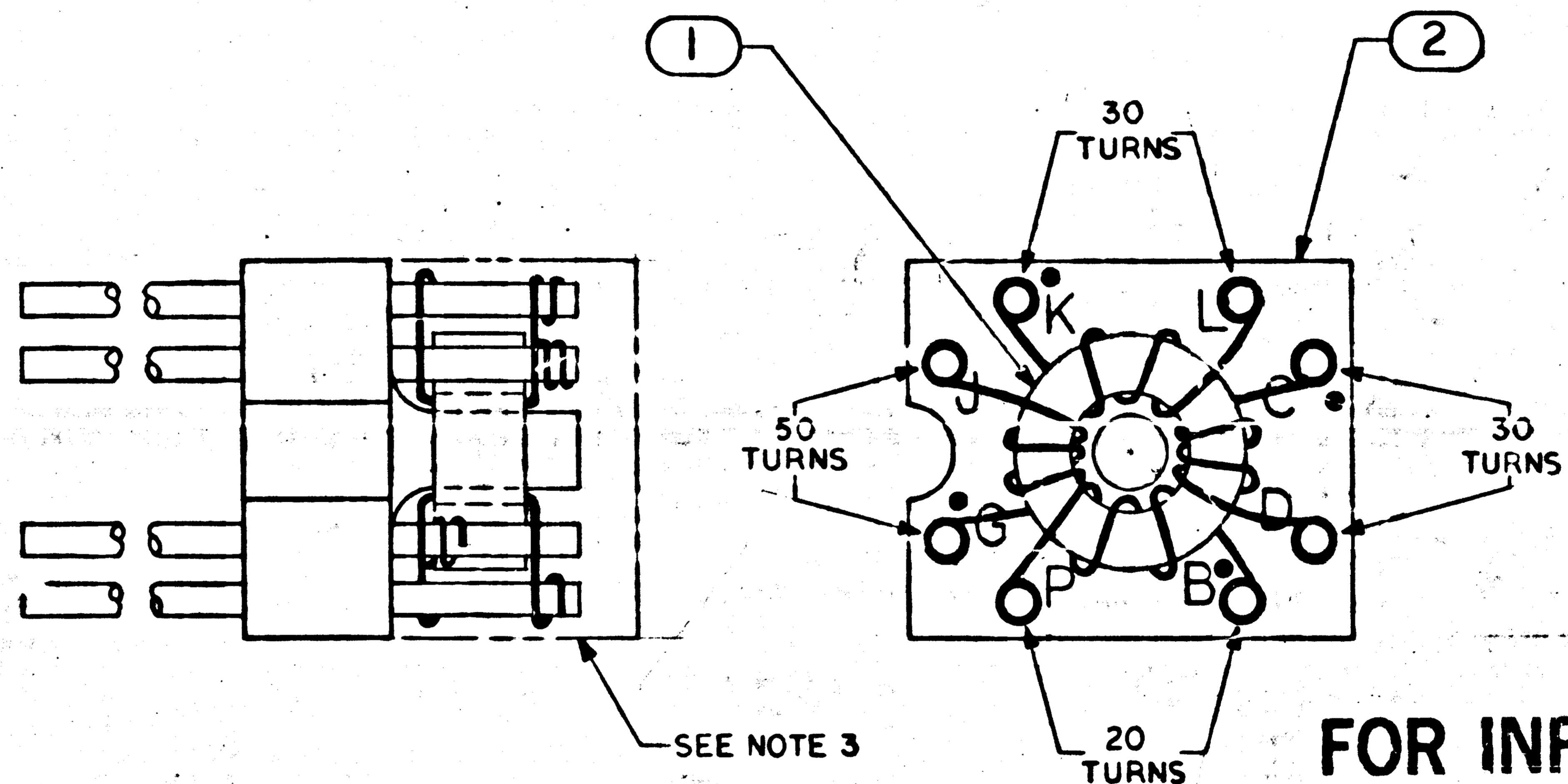
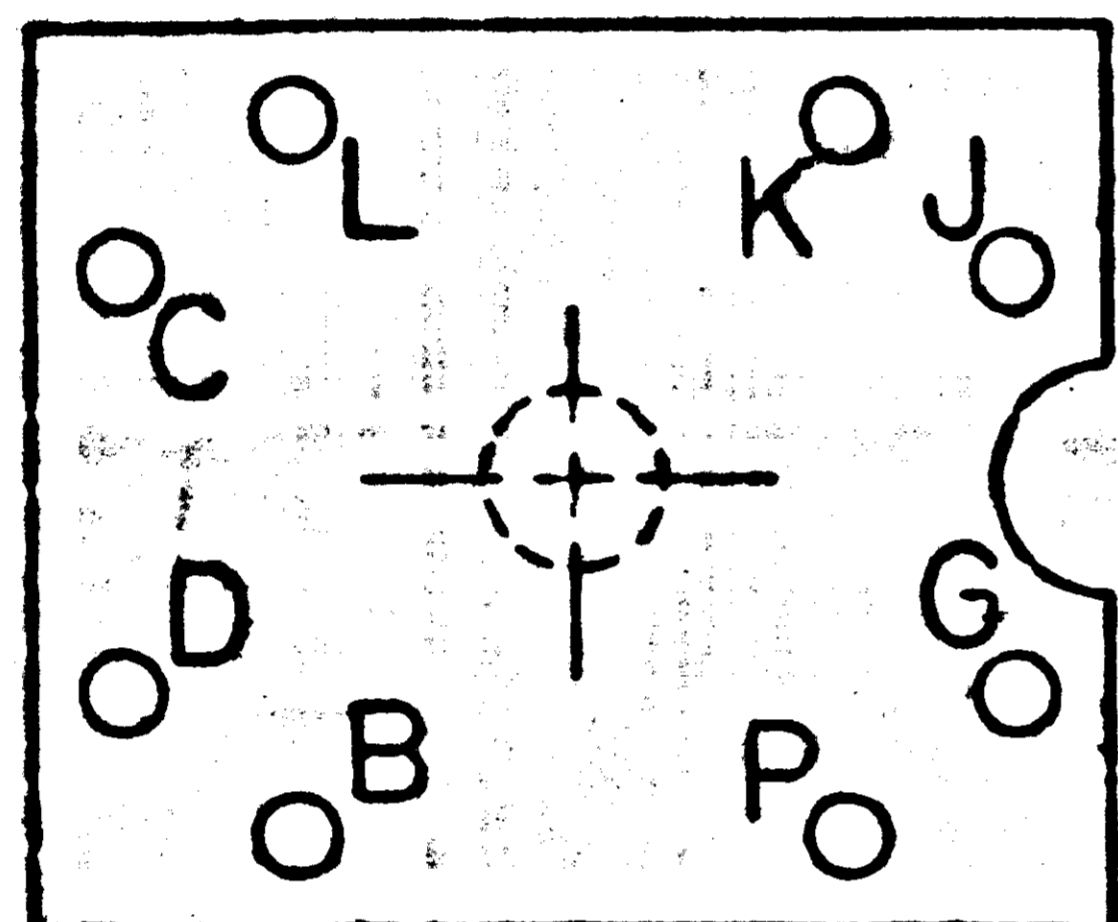
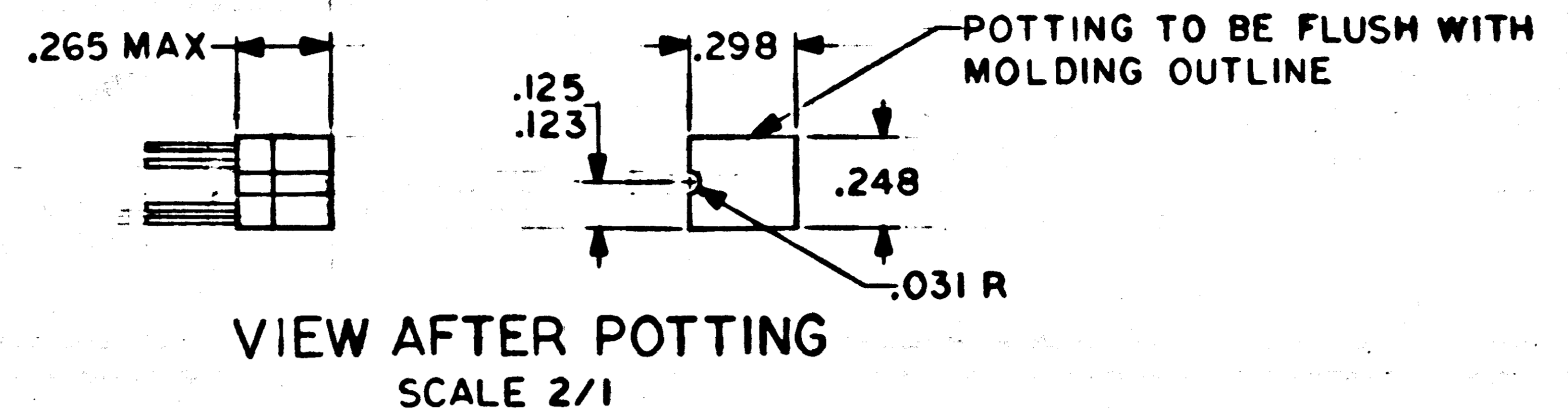


NOTICE - WHEN GOVERNMENT DRAWINGS, SPECIFICATIONS, OR OTHER DATA ARE USED FOR ANY PURPOSE OTHER THAN IN CONNECTION WITH A DEFINITELY RELATED GOVERNMENT PROCUREMENT OPERATION, THE UNITED STATES GOVERNMENT THEREBY INCURS NO RESPONSIBILITY NOR ANY OBLIGATION WHATSOEVER, AND THE FACT THAT THE GOVERNMENT MAY HAVE FORWARDED, IN ANY WAY, SUCH DATA TO ANY OTHER PERSON OR ENTITY, OR THAT SUCH DATA IS BEING REPRODUCED OR REPRODUCIBLE BY ANY OTHER PERSON OR ENTITY, DOES NOT CONSTITUTE AN AUTHORITY TO REPRODUCE OR TRANSMIT SUCH DATA IN ANY MANNER OR FOR ANY PURPOSE OTHER THAN THAT AUTHORIZED BY THE ORIGINAL HOLDER OF ANY PATENT RIGHTS OR PERMISSION TO MANUFACTURE, USE OR SELL ANY PATENTED INVENTION THAT MAY IN ANY WAY BE RELATED THERETO.

1003084 A

REVISIONS			
SYM	DESCRIPTION	DATE	APPROVAL
A	REVISED PER TDRR 02056	7/17/63	[Signature]



FOR INFORMATION ONLY
 CLASS B RELEASE TDR No. 00931 DATE 1-24-63

- NOTES:
1. INTERPRET DRAWING IN ACCORDANCE WITH STANDARDS PRESCRIBED BY MIL-D-70327
 2. SOLDER
 3. POT WITH STYCAST 2651 MM PER ND 1002126

NOTES

QTY REQD	PART OR IDENTIFYING NO.	NOMENCLATURE OR DESCRIPTION	FIND NO.
1	1004107	MOLDING, K CORE	2
1	1004108	ASSEMBLY, WOUND, K CORE	1

APPLICATION		NEXT ASSY		USED ON		FINAL FINISH		HEAT TREATMENT		MATERIAL		DO NOT SCALE THIS DRAWING		UNLESS OTHERWISE SPECIFIED DIMENSIONS ARE IN INCHES TOLERANCES ON	

MIT INSTRUMENTATION LAB CAMBRIDGE, MASS.		MANNED SPACECRAFT CENTER HOUSTON, TEXAS	
DRAWN <i>[Signature]</i> DATE 6 MAR 63		ASSEMBLY	
CHECKED <i>[Signature]</i> 7/15/63		K CORE	
APPROVAL <i>[Signature]</i>		NASA DRAWING NO. 1003084	
NASA APPROVAL <i>[Signature]</i> 4/24/63		CODE IDENT NO. C	SIZE
MIT APPROVAL <i>[Signature]</i> 2/2/63		SCALE 10/1	WT
		SHEET 1	OF 1

