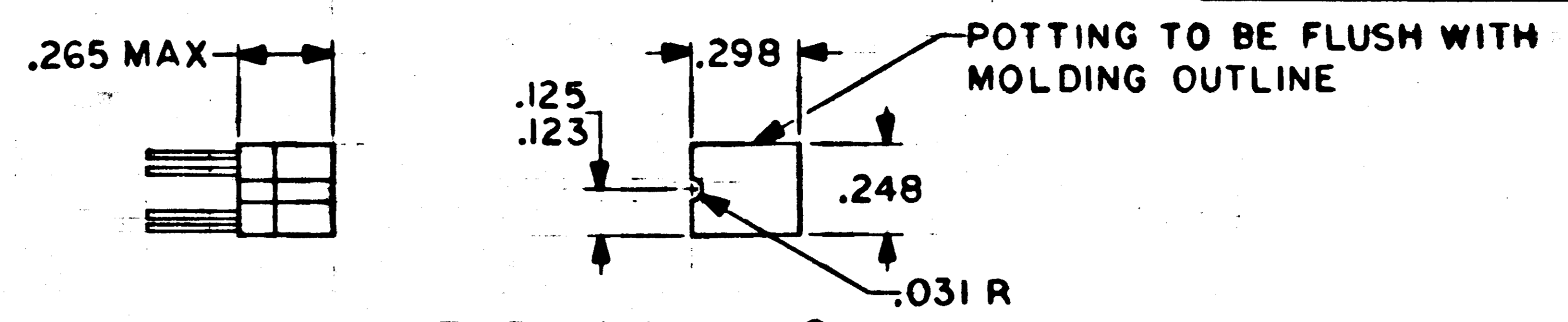


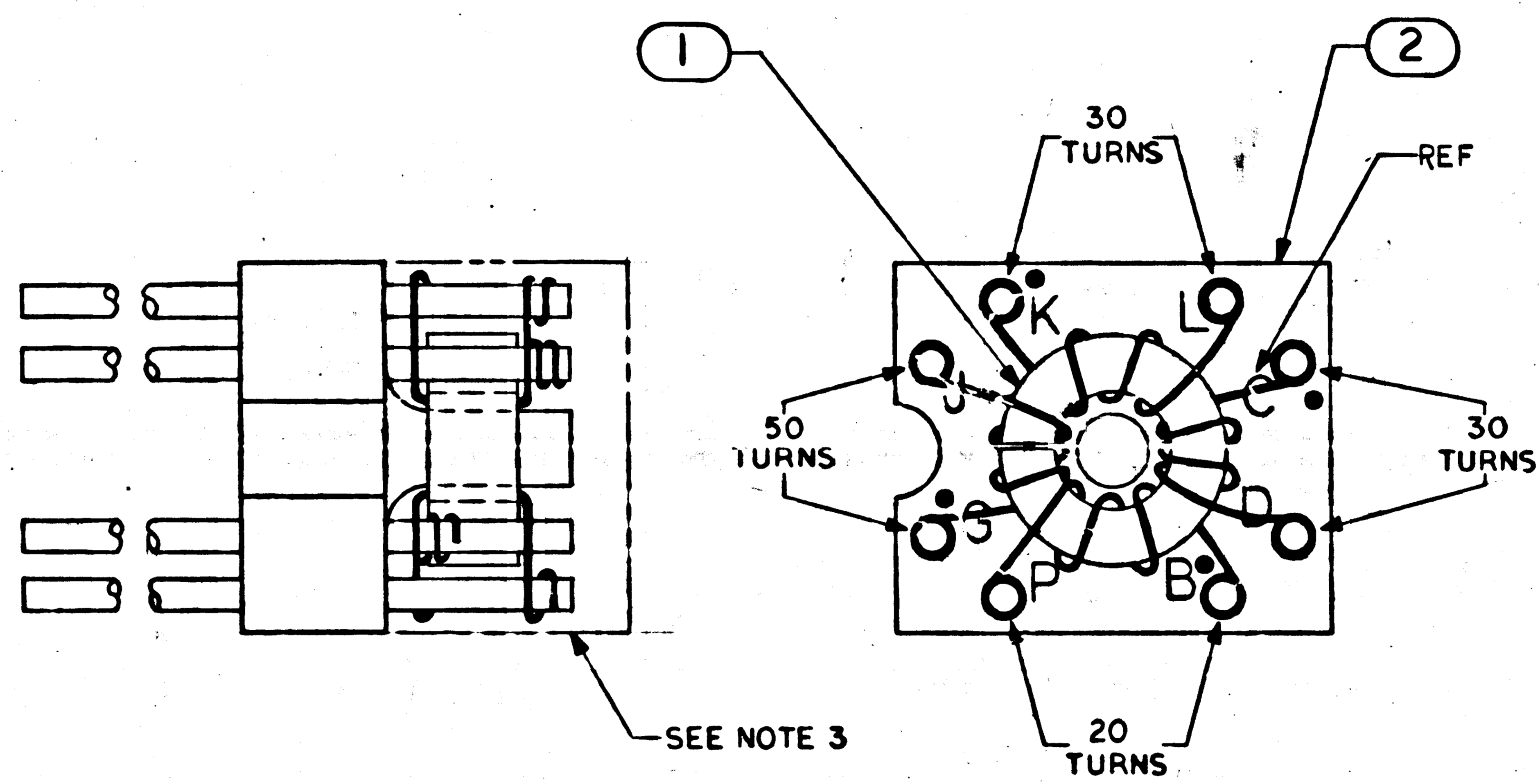
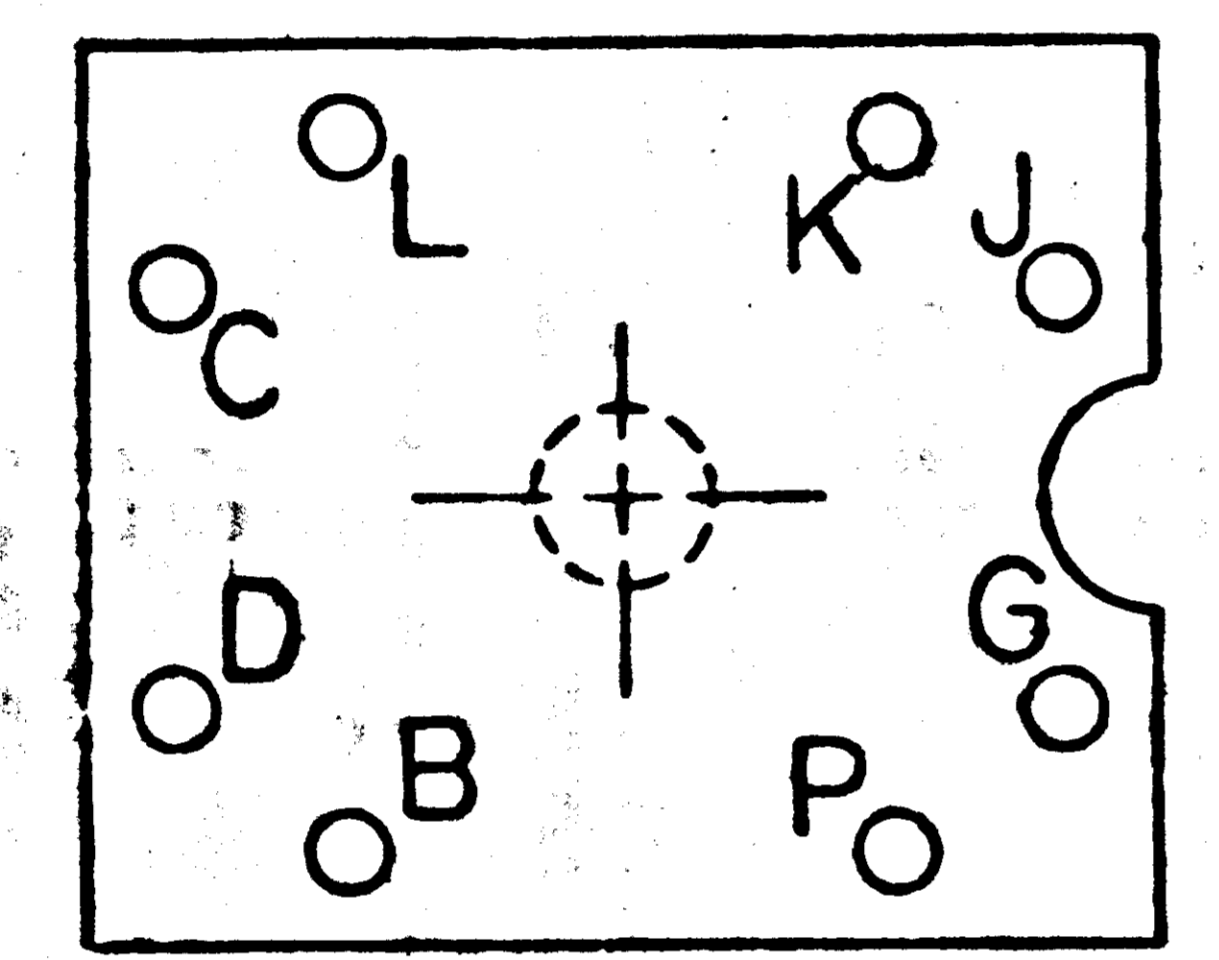
NOTICE - WHEN GOVERNMENT DRAWINGS, SPECIFICATIONS, OR OTHER DATA ARE USED FOR ANY PURPOSE OTHER THAN IN CONNECTION WITH A DEFINITELY RELATED GOVERNMENT PROCUREMENT OPERATION, THE UNITED STATES GOVERNMENT THEREBY INCURS NO RESPONSIBILITY NOR ANY OBLIGATION WHATSOEVER, AND THE FACT THAT THE GOVERNMENT MAY HAVE PROVIDED, FURNISHED, OR IN ANY WAY SUPPLIED THE SAID DRAWINGS, SPECIFICATIONS OR OTHER DATA IS NOT TO BE REGARDED BY IMPLICATION OR OTHERWISE AS IN ANY MANNER LICENSING THE HOLDER OR ANY OTHER PERSON OR CORPORATION OR CONFIRMING ANY RIGHTS OR PERMISSION TO MANUFACTURE, USE, OR SELL ANY PATENTED INVENTION THAT MAY IN ANY WAY BE RELATED THEREBY.

1003084 B

REVISIONS 00931			
SYM	DESCRIPTION	DATE	APPROVAL
A	REVISED PER TDRR 02056	7/17/63	JH
B	UP GRADED TO CLASS A WITH CHANGES PER TDRR 02146	8-22-63	EPK



VIEW AFTER POTTING
SCALE 2/1



- NOTES:
1. INTERPRET DRAWING IN ACCORDANCE WITH STANDARDS PRESCRIBED BY MIL-D-70327
 2. CORE WINDINGS TO BE SOLDERED TO PINS PER MSFC-PROC-158
 3. POT WITH STYCAST 2651 MM PER ND 1002126

NOTES

QTY REQ	PART OR IDENTIFYING NO.	NOMENCLATURE OR DESCRIPTION	FIND NO.
1	1004107	MOLDING, K CORE	2
1	1004108	ASSEMBLY, WOUND, K CORE	1

APPLICATION		UNLESS OTHERWISE SPECIFIED DIMENSIONS ARE IN INCHES TOLERANCES ON		MIT INSTRUMENTATION LAB CAMBRIDGE, MASS.		MANNED SPACECRAFT CENTER HOUSTON, TEXAS	
		FRACTIONS	DECIMALS	ANGLES	DATE	ASSEMBLY	
		\pm	\pm .005	\pm	1/24/63	K CORE	
		DO NOT SCALE THIS DRAWING			APPROVAL		
		MATERIAL			APPROVAL		
1003152		HEAT TREATMENT			NASA APPROVAL	CODE IDENT NO.	NASA DRAWING NO.
NEXT ASSY	USED ON	FINAL FINISH			MIT APPROVAL	C	1003084
						SCALE 10/1	SHEET 1 OF 1

