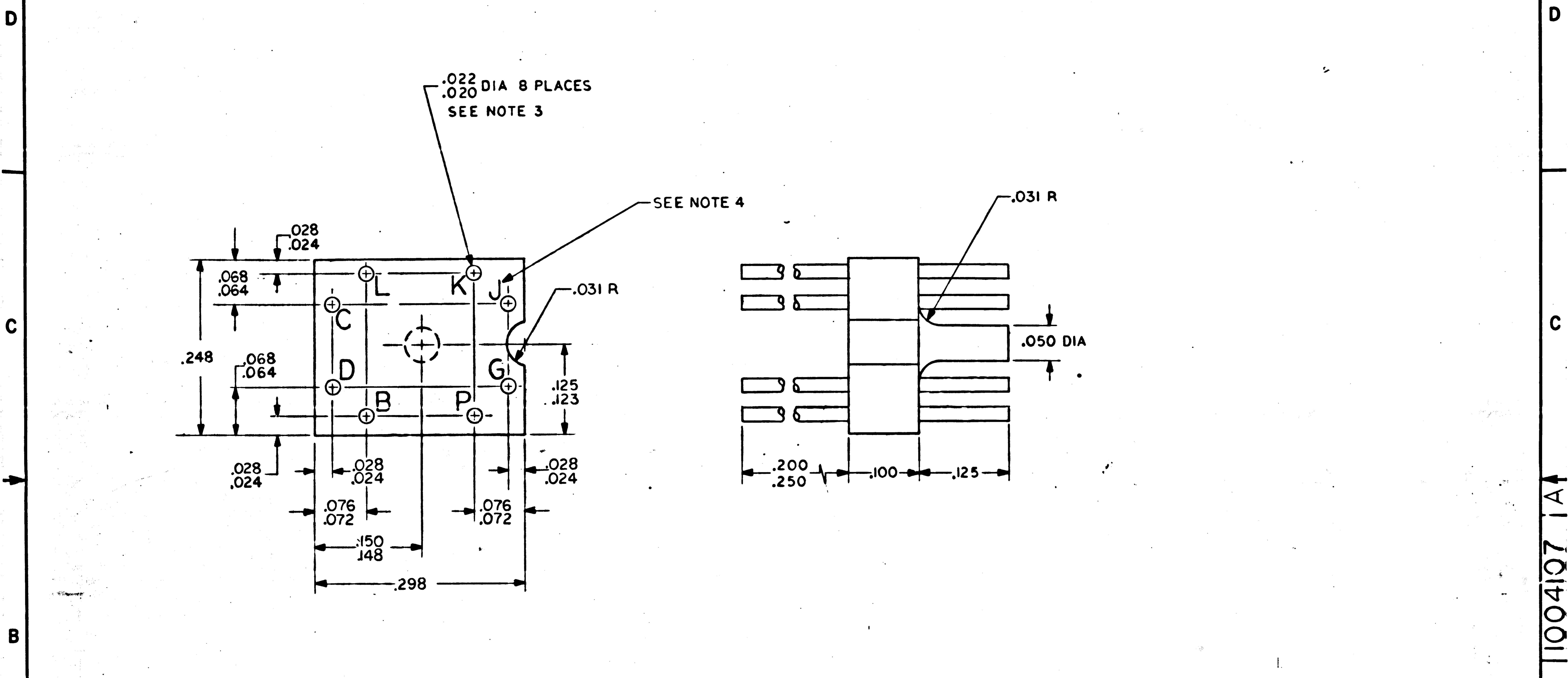


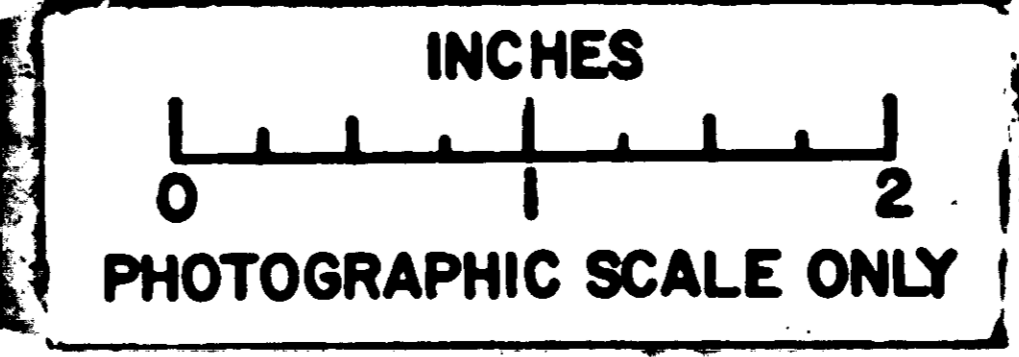
NOTICE - WHEN GOVERNMENT DRAWINGS, SPECIFICATIONS, OR OTHER DATA ARE USED FOR ANY PURPOSE OTHER THAN IN CONNECTION WITH A DIRECTLY RELATED GOVERNMENT PROCUREMENT OPERATION, THE UNITED STATES GOVERNMENT INCURS NO RESPONSIBILITY FOR ANY OBLIGATION WHATSOEVER; NEITHER DOES IT WARRANT THAT THE INFORMATION IS CORRECT, COMPLETE, OR NOT TO BE RELEASED BY IMPLICATION OR OTHERWISE; AS IN ANY CASE, THE USER OF ANY INFORMATION CONTAINED HEREIN SHALL BE RESPONSIBLE FOR OBTAINING THE NECESSARY RIGHTS OR PERMISSIONS TO MANUFACTURE, USE, OR SELL ANY PATENTED INVENTION THAT MAY BE RELATED THERETO.

1004107		REVISIONS 0093/	
SYM	DESCRIPTION	DATE	APPROVAL
A	UP GRADED TO CLASS A WITH CHANGES PER TDRR 02849	8-28-63	EPK



- NOTES:
1. INTERPRET DRAWING IN ACCORDANCE WITH STANDARDS PRESCRIBED BY MIL-D-70327
 2. MATERIAL: GLASS FILLED DIALYLPHTHALATE NO. 52-01 YELLOW, PER MIL-M-14F, TYPE SDG
 3. GRADE A NICKEL PER MIL-N-46025; GOLD PLATED PER MIL-G-45204 TYPE I, CLASS I WITH COPPER STRIKE NOTE TO EXCEED .0001 INCHES THICK
 4. MARK .060/100 HIGH BLACK PER ND1002019

QTY REQD	PART OR IDENTIFYING NO.	NOMENCLATURE OR DESCRIPTION	FIND NO.
LIST OF MATERIALS			
MIT INSTRUMENTATION LAB CAMBRIDGE, MASS.		MANNED SPACECRAFT CENTER HOUSTON, TEXAS	
DRAWN <i>F. Johnson</i> DATE 7/24/63		MOLDING K CORE	
CHECKED <i>[Signature]</i>			
APPROVAL <i>[Signature]</i>		CODE IDENT NO.	SIZE
NASA APPROVAL <i>[Signature]</i>			C
MIT APPROVAL <i>[Signature]</i>		SCALE 10/1	WT
APPLICATION		NASA DRAWING NO. 1004107	
NEXT ASSY	USED ON	SHEET 1 OF 1	



1004107 1A