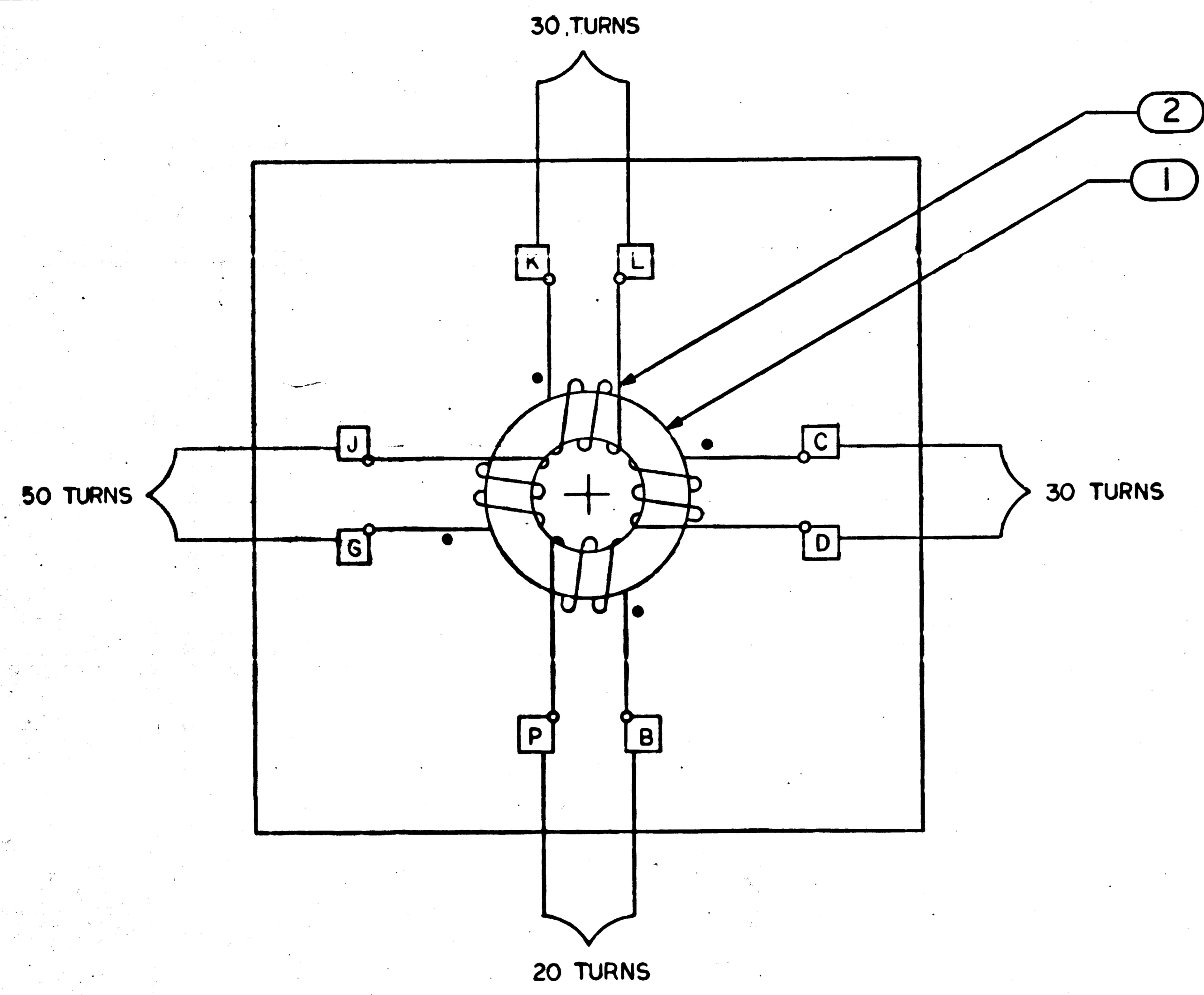


NOTICE - WHEN GOVERNMENT DRAWINGS, SPECIFICATIONS, OR OTHER DATA ARE USED FOR ANY PURPOSE OTHER THAN IN CONNECTION WITH A DEFINITELY RELATED GOVERNMENT PROCUREMENT OPERATION, THE UNITED STATES GOVERNMENT THEREBY INCURS NO RESPONSIBILITY FOR ANY DELAY, OMISSION, INACCURACY, AND THE FACT THAT THE GOVERNMENT MAY HAVE FORMULATED, FURNISHED, OR IN ANY WAY SUPPLIED THE SAID DRAWINGS, SPECIFICATIONS OR OTHER DATA IS NOT TO BE REGARDED BY IMPLICATION OR OTHERWISE AS IN ANY MANNER LICENSING THE HOLDER OR ANY OTHER PERSON OR CORPORATION, OR CONFERRING ANY RIGHTS OR PERMISSION TO MANUFACTURE, USE OR SELL ANY PATENTED INVENTION THAT MAY IN ANY WAY BE RELATED THEREBY.

A		1004108	REVISIONS 00931	
SYM	DESCRIPTION	DATE	APPROVAL	
A	UP GRADED TO CLASS A WITH CHANGES PER TDRR 02048	2-28-63	RPL JV	



NOTES:
 1 INTERPRET DRAWING IN ACCORDANCE WITH STANDARDS PRESCRIBED BY MIL- D-70327

NOTES:

A.R.	1006711-20	WIRE	2
I	1006773-2	CORE, II MAXWELL	1
QTY REQD	PART OR IDENTIFYING NO.	NOMENCLATURE OR DESCRIPTION	FIND NO.

MIT INSTRUMENTATION LAB CAMBRIDGE, MASS.		MANNED SPACECRAFT CENTER HOUSTON, TEXAS	
DRAWN <i>[Signature]</i> DATE 4/3/63 CHECKED <i>[Signature]</i> 7/4/63 APPROVAL <i>[Signature]</i>		ASSEMBLY, WOUND K CORE	
1003084	HEAT TREATMENT	NASA APPROVAL <i>[Signature]</i> 4/1/63	CODE IDENT NO. SIZE C
NEXT ASSY	USED ON	MIT APPROVAL <i>[Signature]</i> 2/4/63	NASA DRAWING NO. 1004108
APPLICATION	FINAL FINISH	SCALE 10:1	WT SHEET OF

