

NOTICE - WHEN GOVERNMENT DRAWINGS, SPECIFICATIONS, OR OTHER DATA ARE USED FOR ANY PURPOSE OTHER THAN IN CONNECTION WITH A DEFINITELY RELATED GOVERNMENT PROCUREMENT OPERATION, THE UNITED STATES GOVERNMENT THEREBY INCURS NO RESPONSIBILITY NOR ANY OBLIGATION WHATSOEVER, AND THE FACT THAT THE GOVERNMENT MAY HAVE FORMULATED, FURNISHED, OR IN ANY WAY SUPPLIED THE SAID DRAWINGS, SPECIFICATIONS, OR OTHER DATA IS NOT TO BE REGARDED BY IMPLICATION OR OTHERWISE AS IN ANY MANNER LICENSING THE HOLDER OR ANY OTHER PERSON OR CORPORATION, OR CONVEYING ANY RIGHTS OR PERMISSION TO MANUFACTURE, USE, OR SELL ANY PATENTED INVENTION THAT MAY IN ANY WAY BE RELATED THEREBY.

— 2889001

REVISIONS

SYM	ZONE	DESCRIPTION	DR	CHK	DATE	APPROVED
—		INITIAL RELEASE CLASS A PER TDRR			12-14-65	

REQUIREMENTS:

1. GENERAL:

- INTERPRET DRAWING IN ACCORDANCE WITH THE STANDARDS PRESCRIBED BY MIL-D-70327.
- SUPPLIER SHALL CONFORM TO THE QUALITY ASSURANCE PROVISIONS CONTAINED IN ND 1015404, CLASS 2.
- UNITS SHALL BE CAPABLE OF MEETING ALL QUALIFICATION REQUIREMENTS OF ND 1002056.
- PART MARKING: PARTS SHALL BE PERMANENTLY AND LEGIBLY MARKED, IN ACCORDANCE WITH ND 1002019, WITH THE MANUFACTURER'S NAME AND/OR SYMBOL, LOT CODE OR NUMBER, TERMINAL IDENTIFICATION AND NASA PART NUMBER (DRAWING NUMBER) AND REVISION LETTER.
- PREPARATION FOR DELIVERY SHALL BE IN ACCORDANCE WITH ND 1002215, CLASS I, CODE 1.
 - MARKING OF SHIPPING CONTAINERS SHALL CONFORM TO THE MARKING OF UNIT AND INTERMEDIATE PACKAGES AND THE METHODS OF MARKING AS SPECIFIED IN ND 1002215.

2. ACCEPTANCE AND INSPECTION: (100%)

A. MECHANICAL AND PHYSICAL PROPERTIES:

- DIMENSIONS: AS DELINEATED HEREIN.
- SURFACE ROUGHNESS: 125/ UNLESS OTHERWISE SPECIFIED.
- MARKING: AS SPECIFIED IN NOTES 1.D. AND 1.E. NO MARKING SHALL APPEAR ON THE 32/ AREA.
- PANEL COLOR AND MARKING:

COLOR, ENERGIZED: CROSS HATCHED LEGEND AREAS TO BE YELLOW, ALL OTHER LEGEND AREAS TO BE WHITE.

COLOR, UNENERGIZED: LEGEND BACKGROUND TO BE LOW REFLECTIVE, DIFFUSE, NEUTRAL GREY WHEN NOT ENERGIZED. CONTRAST BETWEEN BLACK CHARACTERS AND UNLIGHTED BACKGROUND SHALL BE BETWEEN 2 TO 4 UNITS IN ACCORDANCE WITH MIL-P-7788.

SURFACE GLOSS: THE DISPLAY AREAS SHALL HAVE A SURFACE GLOSS OF 5 UNITS OR LESS AS MEASURED PER MIL-P-7788 WHEN IN THE UNENERGIZED CONDITION.

MARKING, LEGEND: LEGENDS SHALL BE AS SHOWN ON DRAWING. CHARACTERS SHALL BE GORTON CONDENSED WITH PROPORTIONS PER ND 1002122, TYPE II, CLASS 2. THE OVERALL HEIGHT OF CHARACTERS SHALL BE .156. THE LINE STROKE WIDTH SHALL BE .025/.030. LEGEND SHALL BE CENTERED ON DISPLAY FACE PLATE. FILL SHALL BE BLACK COLOR NO. 37038 PER FED-STD-595 AND SHALL BE OPAQUE WHEN LEGEND IS ENERGIZED.

PROCURE ONLY FROM APPROVED SOURCES LISTED IN ND 1002034 FOR THIS DRAWING.

B. ELECTRICAL CHARACTERISTICS:

(1) POWER DISSIPATION:

YELLOW DISPLAYS: 0.180 AMPERES \pm 15% AT 5.0 \pm 0.1 VDC.
WHITE DISPLAYS: 0.225 AMPERES \pm 15% AT 5.0 \pm 0.1 VDC

- (2) DIELECTRIC WITHSTANDING VOLTAGE: 200 \pm 25 VRMS AT 60 CPS FOR 5 SECONDS BETWEEN ADJACENT TERMINALS AND BETWEEN ANY TERMINAL AND THE CASE PER MIL-STD-202, METHOD 301.

- (3) INSULATION RESISTANCE: 100 MEGOHMS MINIMUM AT 100 VDC AT SEA LEVEL, 70° \pm 10°F, 50% RH MAXIMUM, BETWEEN ADJACENT TERMINALS AND BETWEEN ANY TERMINAL AND CASE PER MIL-STD-202, METHOD 302.

MASTER

		UNLESS OTHERWISE SPECIFIED DIMENSIONS ARE IN INCHES CAPACITOR VALUES ARE IN μ F RESISTOR VALUES ARE IN OHMS TOLERANCES ON FRACTIONS DECIMALS ANGLES \pm \pm \pm DO NOT SCALE THIS DRAWING MATERIAL
NEXT ASSY	USED ON	
APPLICATION		

QTY REQD	PART OR IDENTIFYING NO.	MATERIAL OR NOTES	NOMENCLATURE OR DESCRIPTION	FIND NO.
LIST OF MATERIALS				
MIT INSTRUMENTATION LAB CAMBRIDGE, MASS.		MANNED SPACECRAFT CENTER HOUSTON, TEXAS		
DRAWN <i>St. Wong</i>	17 NOV 65	INDICATOR, ALARM SPECIFICATION CONTROL DRAWING		
CHECKED <i>J. J. M. M.</i>	22 NOV 65			
APPROVED				
APPROVED <i>Eden C. Hall</i>	14 Dec 65			
APPROVED MIT <i>W. J. J.</i>	14 Dec 65	CODE IDENT NO.	SIZE	DRAWING NO.
APPROVED MSC		80230	C	1006387
	DATE	SCALE NONE		SHEET 1 OF 3

NOTICE - WHEN GOVERNMENT DRAWINGS, SPECIFICATIONS, OR OTHER DATA ARE USED FOR ANY PURPOSE OTHER THAN IN CONNECTION WITH A DEFINITELY RELATED GOVERNMENT PROCUREMENT, THE UNITED STATES GOVERNMENT THEREBY INCURS NO RESPONSIBILITY NOR ANY OBLIGATION WHATSOEVER, AND THE FACT THAT THE GOVERNMENT MAY HAVE FORMULATED, FURNISHED, OR IN ANY WAY SUPPLIED THE SAID DRAWINGS, SPECIFICATIONS OR OTHER DATA IS NOT TO BE REGARDED BY IMPLICATION OR OTHERWISE AS IN ANY MANNER LICENSING THE HOLDER OR ANY OTHER PERSON OR CORPORATION, OR CONVEYING ANY RIGHTS OR PERMISSION TO MANUFACTURE, USE, OR SELL ANY PATENTED INVENTION THAT MAY IN ANY WAY BE RELATED THERETO.

1889001

REVISIONS						
SYM	ZONE	DESCRIPTION	DR	CHK	DATE	APPROVED
-		INITIAL RELEASE CLASS A PER TDRR 24677			12-14-65	

REQUIREMENTS: (CONTINUED)

3. DESIGN:

A. OPERATING LIFE: 4000 HOURS MINIMUM AT POWER DISSIPATION PER NOTE 2.B.(1) AT $70^{\circ} \pm 10^{\circ} \text{F}$ AMBIENT TEMPERATURE.

B. MATERIAL: ALL MATERIAL SHALL BE CAPABLE OF MEETING THE REQUIREMENTS OF THIS DRAWING AND EXHIBIT NO TOXICITY.

(1) PLASTIC FACE PLATE: ACRYLIC SHEET PLASTIC PER MIL-P-5425, FINISH A.

(2) CASE: ALUMINUM ALLOY.

C. FINISHES:

(1) ALUMINUM CASE: CHROMATE TREAT PER MIL-C-5541.

(2) EXPOSED ACRYLIC SURFACES TO BE COATED WITH EPOXY RESIN PER SCD 1010657 USING CATALYST PER SCD 1010686. COATING TO BE SMOOTH AND UNIFORM. LEGEND AREA TO MEET THE REQUIREMENTS OF PARA 2.A.(4).

(3) PAINT SURFACES MARKED "A" BLACK EPOXY ENAMEL PER MIL-P-27316.

(4) PAINT TOP BORDER AREA MED GRAY EPOXY ENAMEL PER ND 1002110 USING 1010729-1.

D. TERMINALS AND INSULATORS: SHALL MEET THE REQUIREMENTS OF ND 1002136.

E. PANEL COLORS: [REF NOTE 2.A.(4)] YELLOW COLOR TO BE AVIATION YELLOW AND WHITE COLOR TO BE AVIATION WHITE PER MIL-C-25050. COLOR COORDINATES SHALL REMAIN WITHIN THE LIMITS OF THE SPECIFIED AVIATION COLORS WHEN ENERGIZED FROM 5.0 THRU 3.0 VDC. THE X - COORDINATE FOR THE AVIATION WHITE DISPLAYS SHALL NOT EXCEED $X = .560$ WHEN ENERGIZED FROM 5.0 THRU 2.0 VDC.

F. LAMPS: EACH OF THE 14 LEGEND AREAS SHALL BE ILLUMINATED BY 3 LAMPS, PARALLEL WIRED AS SHOWN IN THE SCHEMATIC. YELLOW DISPLAY LAMPS TO BE MS 24367-680. WHITE DISPLAY LAMPS TO BE MS 24367-713.

G. WHEN MOUNTED ON A SUITABLE FIXTURE, THE UNIT SHALL BE CAPABLE OF WITHSTANDING A PRESSURE OF 15 PSIA OF HELIUM, APPLIED AGAINST THE $3\frac{3}{4}$ " AREA, WHEN THE EXTERNAL PRESSURE IS REDUCED TO 1" HG EQUIVALENT PRESSURE; WHEN SUBJECTED TO THIS DIFFERENTIAL PRESSURE, THE UNIT SHALL EXHIBIT A LEAK RATE OF NO MORE THAN 8×10^{-6} ATM CC/SEC OVER THE TEMPERATURE RANGE OF -10°C TO $+82^{\circ} \text{C}$.

4. NOTE: THIS UNIT IS TO BE MOUNTED ON A HEAT SINK WHEN LEGENDS ARE ENERGIZED FOR PERIODS LONGER THAN TWO (2) MINUTES. A SATISFACTORY HEAT SINK CAN BE AN ALUMINUM OR BRASS PLATE $10" \times 10" \times \frac{1}{8}"$ WITH A CENTERED RECTANGULAR OPENING FOR MOUNTING THE UNIT.

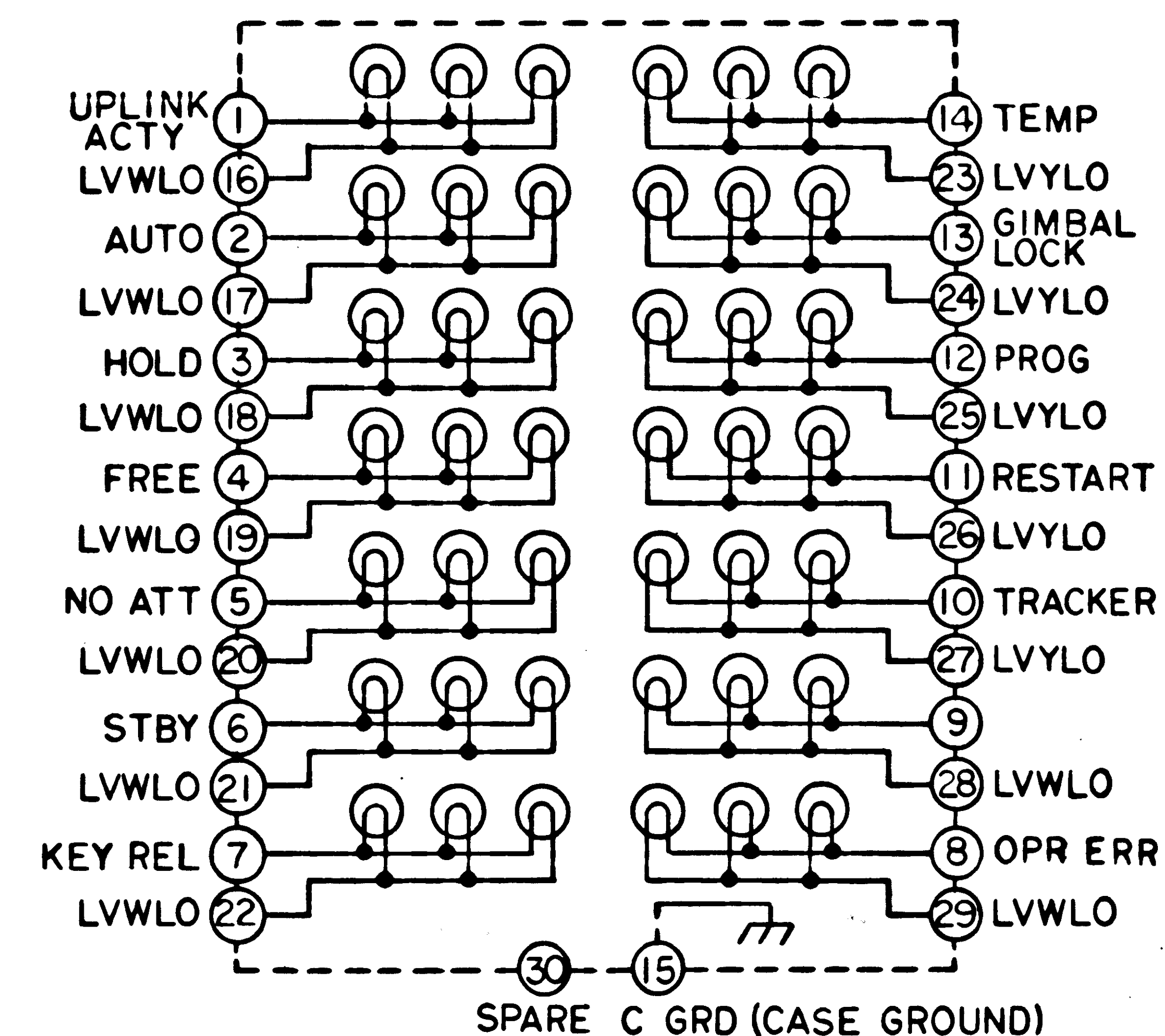


FIGURE 1 - SCHEMATIC

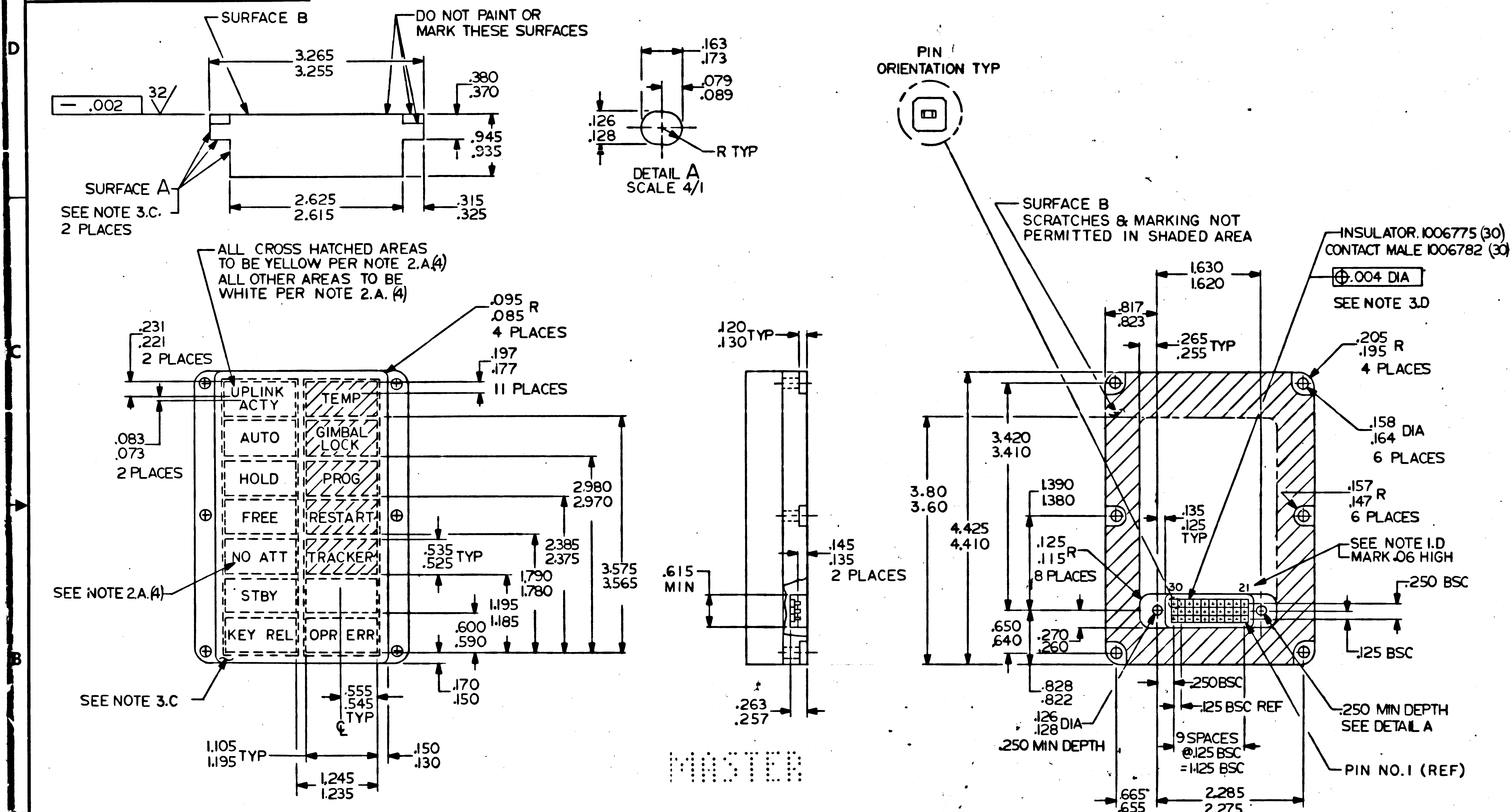
QTY REQD	PART OR IDENTIFYING NO.	MATERIAL OR NOTES	NOMENCLATURE OR DESCRIPTION	FIND NO.
LIST OF MATERIALS				
MIT INSTRUMENTATION LAB CAMBRIDGE, MASS.		MANNED SPACECRAFT CENTER HOUSTON, TEXAS		
DRAWN <i>H. Wang</i> 8/28/65		INDICATOR, ALARM		
CHECKED <i>J. J. Hall</i> 8/28/65		SPECIFICATION CONTROL DRAWING		
APPROVED <i>Edna C. Hall</i> 11/14/65				
APPROVED MIT <i>W. J. Hall</i> 11/14/65		DRAWING NO. 1006387		
APPROVED MSC <i>A. C. Metzger</i>		CODE IDENT NO. 80230 C		
DATE		SCALE NONE		
		SHEET 2 OF 3		

		UNLESS OTHERWISE SPECIFIED DIMENSIONS ARE IN INCHES CAPACITOR VALUES ARE IN μf RESISTOR VALUES ARE IN OHMS TOLERANCES ON FRACTIONS DECIMALS ANGLES \pm \pm \pm DO NOT SCALE THIS DRAWING
		MATERIAL
		SEE NOTE
NEXT ASSY	USED ON	
APPLICATION		

NOTICE - WHEN GOVERNMENT DRAWINGS, SPECIFICATIONS, OR OTHER DATA ARE USED FOR ANY PURPOSE OTHER THAN IN CONNECTION WITH A DEFINITELY RELATED GOVERNMENT PROCUREMENT OPERATION, THE UNITED STATES GOVERNMENT THEREBY INCURS NO RESPONSIBILITY NOR ANY OBLIGATION WHATSOEVER, AND THE FACT THAT THE GOVERNMENT MAY HAVE FORMULATED, FURNISHED, OR IN ANY WAY SUPPLIED THE SAID DRAWINGS, SPECIFICATIONS OR OTHER DATA IS NOT TO BE REGARDED BY IMPLICATION OR OTHERWISE AS IN ANY MANNER LICENSING THE HOLDER OR ANY OTHER PERSON OR CORPORATION, OR CONVEYING ANY RIGHTS OR PERMISSION TO MANUFACTURE, USE, OR SELL ANY PATENTED INVENTION THAT MAY IN ANY WAY BE RELATED THERETO.

1829001

REVISIONS						
SYM	ZONE	DESCRIPTION	DR	CHK	DATE	APPROVED
-		INITIAL RELEASE CLASS A PER TDRR 24677			12-14-65	



		UNLESS OTHERWISE SPECIFIED DIMENSIONS ARE IN INCHES CAPACITOR VALUES ARE IN μ F RESISTOR VALUES ARE IN OHMS TOLERANCES ON FRACTIONS DECIMALS ANGLES \pm \pm \pm DO NOT SCALE THIS DRAWING
		MATERIAL
NEXT ASSY	USED ON	
APPLICATION		

QTY REQD	PART OR IDENTIFYING NO.	MATERIAL OR NOTES	NOMENCLATURE OR DESCRIPTION	FIND NO.
LIST OF MATERIALS				
MIT INSTRUMENTATION LAB CAMBRIDGE, MASS.		MANNED SPACECRAFT CENTER HOUSTON, TEXAS		
DRAWN <i>Jan Doty</i> 19 Nov 65		INDICATOR, ALARM		
CHECKED <i>E. H. H. M.</i> 22 Nov 65		SPECIFICATION CONTROL DRAWING		
APPROVED				
APPROVED <i>Eden C. Hall</i> 14 Dec 65				
APPROVED MIT <i>W. J. J. J.</i> 14 Dec 65		CODE IDENT NO.	SIZE	DRAWING NO.
APPROVED MSC <i>A. C. METZGER</i>		80230	C	1006387
		DATE	SCALE NONE	SHEET 3 OF 3