

NOTICE - WHEN GOVERNMENT DRAWINGS, SPECIFICATIONS, OR OTHER DATA ARE USED FOR ANY PURPOSE OTHER THAN IN CONNECTION WITH A DEFINITELY RELATED GOVERNMENT PROCUREMENT OPERATION, THE UNITED STATES GOVERNMENT THEREBY INCURS NO RESPONSIBILITY NOR ANY OBLIGATION WHATSOEVER, AND THE FACT THAT THE GOVERNMENT MAY HAVE FORMULATED, FURNISHED, OR IN ANY WAY SUPPLIED THE SAID DRAWINGS, SPECIFICATIONS OR OTHER DATA IS NOT TO BE REGARDED BY IMPLICATION OR OTHERWISE AS IN ANY MANNER LICENSING THE HOLDER OR ANY OTHER PERSON OR CORPORATION, OR CONVEYING ANY RIGHTS OR PERMISSION TO MANUFACTURE, USE OR SELL ANY PATENTED INVENTION THAT MAY IN ANY WAY BE RELATED THERE TO.

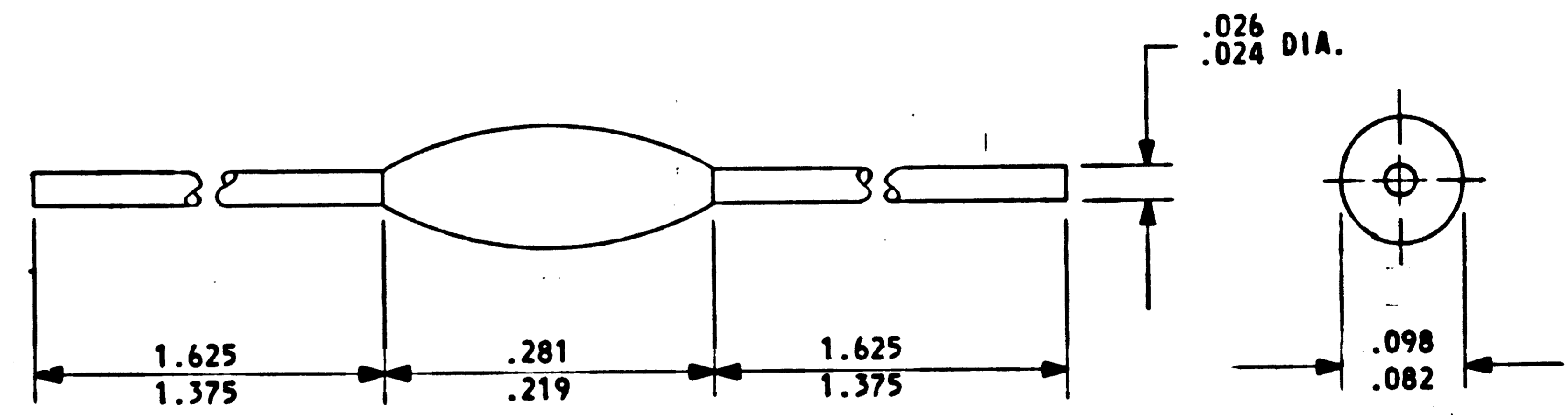
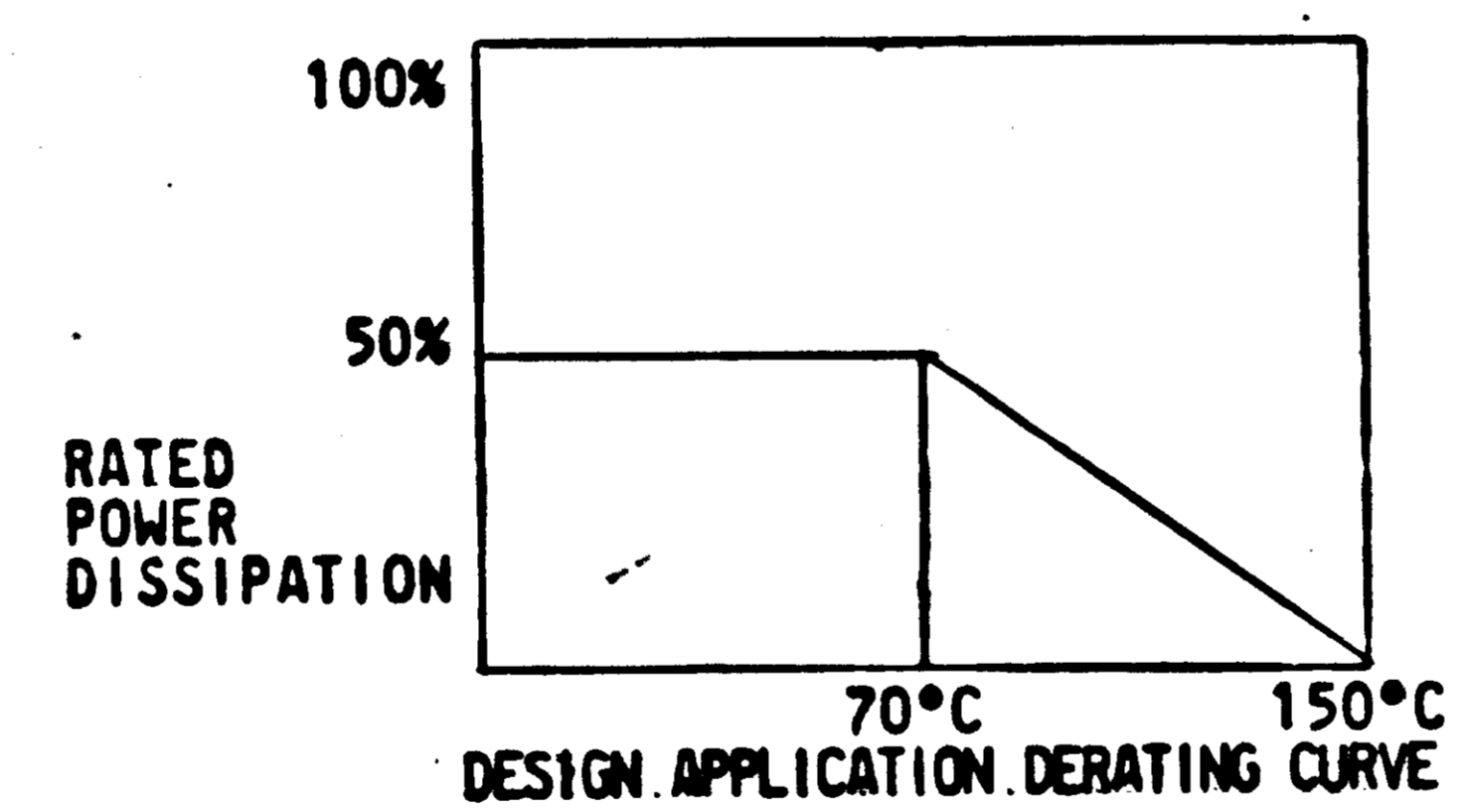
REVISIONS			
SYM	DESCRIPTION	DATE	APPROVAL
(M) A	REVISED & REDRAWN PER TDRR 00287 UPGRADED TO CLASS A RELEASE	1/14/63	
B	REVISED PER TDRR 00401	2-7-63	WIK
C	CHANGE PER TDRR 02593	8/14/63	WIK

NOTES:

1. GENERAL REQUIREMENTS:
 - A. UNITS SHALL MEET THE APPLICABLE REQUIREMENTS OF MIL-R-22684 FOR TYPE RL 07 WITH THE EXCEPTIONS AND ADDITIONS SPECIFIED HEREIN.
 - B. EXCEPTIONS:
 - (1) UNITS SHALL HAVE WELDABLE GOLD COATED DUMET LEADS PER NASA DOCUMENT PS 1015401. A CERTIFICATE OF COMPLIANCE OF LEAD MATERIAL AND FINISH SHALL ACCOMPANY EACH LOT SHIPPED.
 - (2) INITIAL RESISTANCE SHALL BE PLUS OR MINUS 2% OF THE SPECIFIED VALUE.
 - (3) TEMPERATURE COEFFICIENT: $\pm 200P.P.M/^{\circ}C$ MAX FROM $-55^{\circ}C$ TO $150^{\circ}C$.
 - (4) UNITS SHALL BE CAPABLE OF MEETING AN END OF LIFE TOLERANCE OF $\pm 5\%$ OF NOMINAL VALUE SPECIFIED AFTER 5000 HOURS WHEN ENERGIZED AS SHOWN IN DESIGN APPLICATION DERATING CURVE BELOW.
 - (5) MARKING: RESISTORS SHALL BE LEGIBLY AND PERMANENTLY COLOR CODED IN ACCORDANCE WITH MIL-STD-221. TWO PERCENT RESISTANCE TOLERANCE SHALL BE MARKED WITH A RED COLOR BAND. PACKAGE SHALL BE LEGIBLY MARKED PER MIL-STD-129 WITH MANUFACTURER'S NAME AND/OR SYMBOL, LOT CODE, NASA DRAWING NUMBER AND REVISION LETTER.

- C. ADDITIONS:
 - (1) THE SUPPLIER SHALL CONFORM TO THE QUALITY ASSURANCE PROVISIONS CONTAINED IN NASA DOCUMENT ND1015404 CLASS I.
 - (2) BURN IN: 24 HOURS AT 150% OF RATED LOAD AT ROOM AMBIENT TEMPERATURE. THE FOLLOWING PARTS SHALL NOT BE SHIPPED:
 - A) ANY PART WHICH CHANGES MORE THAN THE MEAN CHANGE ± 2 SIGMA.
 - B) ANY PART WHICH CHANGES MORE THAN 0.75%.
 - C) ANY PART WHICH IS BEYOND PURCHASE TOLERANCE AT THE CONCLUSION OF THE TEST.
- D. INTERPRET DRAWING IN ACCORDANCE WITH STANDARDS PRESCRIBED BY MIL-D-70327.

BASIC RESISTANCE VALUE OHMS	MULTIPLIER				
	1	10	10^2	10^3	10^4
	DASH NUMBER				
10		8	32	56	80
11		9	33	57	81
12		10	34	58	82
13		11	35	59	83
15		12	36	60	84
16		13	37	61	
18		14	38	62	
20		15	39	63	
22		16	40	64	
24		17	41	65	
27		18	42	66	
30		19	43	67	
33		20	44	68	
36		21	45	69	
39		22	46	70	
43		23	47	71	
47		24	48	72	
51	1	25	49	73	
56	2	26	50	74	
62	3	27	51	75	
68	4	28	52	76	
75	5	29	53	77	
82	6	30	54	78	
91	7	31	55	79	



PURCHASE TO QUALIFICATION STATUS LIST
ND1002034

QTY REQD	PART OR IDENTIFYING NO.	NOMENCLATURE OR DESCRIPTION	FIND NO.
LIST OF MATERIALS			
UNLESS OTHERWISE SPECIFIED, DIMENSIONS ARE IN INCHES		MIT INSTRUMENTATION LAB CAMBRIDGE, MASS.	
TOLERANCES ON FRACTIONS DECIMALS ANGLES		MANNED SPACECRAFT CENTER HOUSTON, TEXAS	
DO NOT SCALE THIS DRAWING		RESISTOR, FIXED FILM INSULATED 1/4 WATT	
SEE NOTES		SPECIFICATION CONTROL DRAWING	
HEAT TREATMENT	NASA APPROVAL	CODE IDENT NO.	NASA DRAWING NO.
FINAL FINISH	MIT APPROVAL	SIZE	1006750
NEXT ASSY	USED ON	SCALE	WT
APPLICATION		SHEET	OF

