

NOTICE - WHEN GOVERNMENT DRAWINGS, SPECIFICATIONS, OR OTHER DATA ARE USED FOR ANY PURPOSE OTHER THAN IN CONNECTION WITH A DEFINITELY RELATED GOVERNMENT PROCUREMENT OPERATION, THE UNITED STATES GOVERNMENT THEREBY INCURS NO RESPONSIBILITY FOR ANY OBLIGATION WHATSOEVER, AND THE FACT THAT THE GOVERNMENT MAY HAVE FORMULATED, FURNISHED, OR IN ANY WAY SUPPLIED THE SAID DRAWINGS, SPECIFICATIONS OR OTHER DATA IS NOT TO BE REGARDED BY IMPLICATION OR OTHERWISE AS IN ANY MANNER LICENSING THE HOLDER OR ANY OTHER PERSON OR CORPORATION, OR CONVEYING ANY RIGHTS OR PERMISSION TO MANUFACTURE, USE, OR SELL ANY PATENTED INVENTION THAT MAY IN ANY WAY BE RELATED THERETO.

1006755

REVISIONS			
SYM	DESCRIPTION	DATE	APPROVAL
-	TAKEN FROM BUWEP DWG. 2318867		
A	ADDED PROCUREMENT NOTE 7 PER TDRR 00433	2-20-63	WHL

NOTES:

- GENERAL REQUIREMENTS:
  - SPRAGUE TYPE 250 D PER DATA SOURCE NOTED EXCEPT AS AND IN ADDITION TO THE REQUIREMENTS SPECIFIED HEREIN.
  - ELECTRICAL RATINGS: PER TABLE II ON SHEET 2.
  - CAPACITANCE AT 120 CPS @ 25°C: PER SHEET 2.  
CAPACITANCE TOLERANCE: ± 10% @ 120 CPS @ 25°C.
  - MAXIMUM DISSIPATION FACTOR
 

AT -80°C:	0.08
AT +25°C:	0.06
AT +85°C:	0.08
AT +125°C:	0.09
  - OPERATING TEMPERATURE RANGE: -80°C TO +85°C.
  - MAX D.C. LEAKAGE CURRENT: .05 UA/UF - VOLT, BUT IN NO CASE NEED THE LEAKAGE CURRENT BE LESS THAN 1 UA.
- CONSTRUCTION REQUIREMENTS:
  - INSULATING SLEEVE: MYLAR, CAPABLE OF WITHSTANDING 2000 VDC FOR 1 MIN ± 5 SEC.
  - LEADS: UNITS SHALL HAVE WELDABLE NICKEL LEADS PER ND 1015400.  
A CERTIFICATE OF COMPLIANCE OF LEAD MATERIAL SHALL ACCOMPANY EACH LOT SHIPPED.  
EACH LEAD SHALL BE CAPABLE OF WITHSTANDING TWO (2) BENDS, UNDER A TWO (2) POUND VERTICAL PULL (LEADS VERTICAL WITH RESPECT TO UNIT BODY). TWO (2) BENDS SHALL BE ACCOMPLISHED BY MOVING THE BODY OF THE UNIT, WHILE IN THE SAME PLANE THROUGH 90° IN ONE DIRECTION, THEN BACK 180° TO THE OPPOSITE DIRECTION, THEN BACK 90° TO THE ORIGINAL POSITION. NO MECHANICAL DAMAGE OR LACK OF PERFORMANCE SHALL BE EVIDENCED AFTER THE TEST.  
EACH LEAD SHALL BE CAPABLE OF WITHSTANDING AN AXIAL PULL OF FOUR (4) POUNDS MINIMUM.
  - DIMENSIONS AND TOLERANCES: PER TABLE I ON SHEET 1 AND SKETCH.
  - MARKING: MARK UNITS PER MIL-STD-130 WITH MANUFACTURER'S NAME AND/OR SYMBOL, TYPE NUMBER, VOLTAGE AND CAPACITANCE RATING AND POLARITY.  
MARKING OF UNIT PACKAGES AND EXTERIOR SHIPPING CONTAINERS SHALL INCLUDE NASA NUMBER, DASH NUMBER AND REVISION LETTER.
- ENVIRONMENTAL REQUIREMENTS:
  - UNITS SHALL BE CAPABLE OF MEETING THE ENVIRONMENTAL REQUIREMENTS OF ND1002000.
- SUPPLIER SHALL CONFORM TO QUALITY ASSURANCE PROVISIONS OF ND1015404 SECTION .
- BURN-IN (BY SUPPLIER):
  - ALL CAPACITORS SHALL BE SUBJECTED TO A 250 HOUR BURN-IN PERIOD AT RATED VOLTAGE AND +85°C. UNDER THESE CONDITIONS THE FOLLOWING RESULTS SHALL BE OBTAINED. PRE AND POST BURN-IN DATA REPRESENTED BY THESE RESULTS SHALL BE SUPPLIED WITH ALL CAPACITORS SHIPPED. DATA SHALL CONSIST OF MEASUREMENTS FOR EACH UNIT OF THE LOT.
    - THE CAPACITANCE SHALL NOT EXCEED THE INITIAL REQUIREMENTS OF THE APPLICABLE DRAWING.
    - THE LEAKAGE CURRENT AND DISSIPATION FACTOR SHALL NOT EXCEED THE INITIAL LIMITS SPECIFIED BY THE APPLICABLE DRAWING.
- INTERPRET DRAWING PER MIL-D-70327.
- WAIVE AS REQUIRED ALL INFORMATION PRESENTED ON THIS DRAWING EXCEPT LEAD MATERIAL SPEC. & PHYSICAL DIMENSIONS.
  - UPON SPECIFIC INSTRUCTION BY (TD) TECHNICAL DIRECTIVE PROCURE THIS PART AS CHANGE LETTER A BY ORDERING TO VENDOR CATALOG NO. & SPECIFICATIONS. REFERENCE ND 1002034.
  - DISREGARD THIS NOTE IN ITS ENTIRETY IF REFERENCE IS MADE TO THIS DRAWING BY OTHER THAN REVISION LETTER A.

REV- A	REV-	REV-
SHEET 1	SHEET 2	SHEET 3
REVISION STATUS OF SHEETS		

FOR INFORMATION ONLY

CLASS B RELEASE TDR No. 00165 DATE 12/12/62

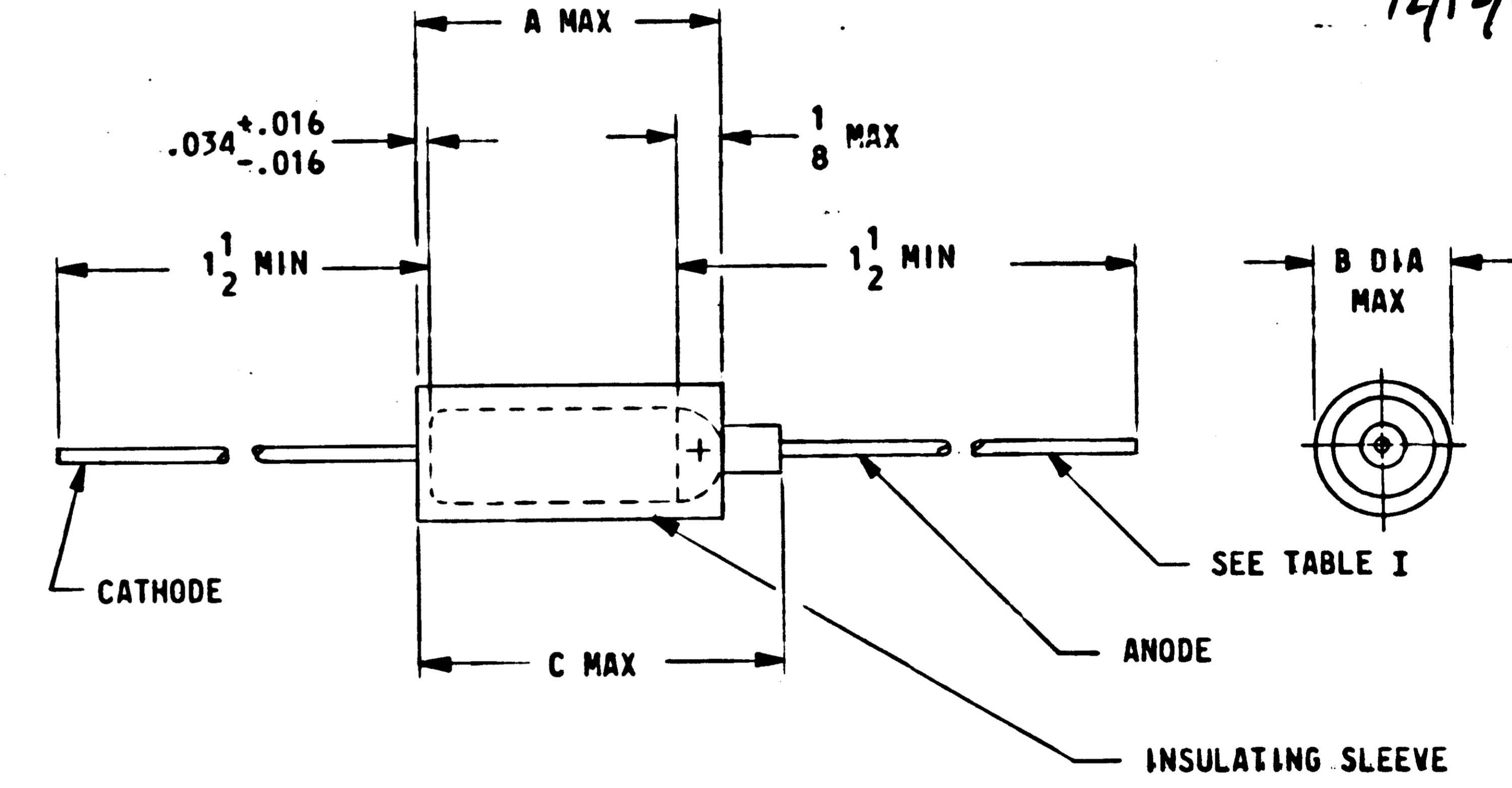


TABLE I

CASE SIZE	NOM LEAD SIZE		DIMENSIONS		
	AWG	DIA	A MAX	B MAX	C MAX
A	24	.020	.353	.151	.503
B	24	.020	.541	.201	.691
C	22	.0253	.753	.305	.903
D	22	.0253	.853	.367	1.003

ORIGINAL SOURCE OF SUPPLY:  
SPRAGUE ELECTRIC COMPANY  
NORTH ADAMS, MASSACHUSETTS  
CODE IDENT NO. 56289

DATA SOURCE:  
SPRAGUE SPECIFICATION  
NO'S DV-102A AND DV-103  
DATED APRIL 14, 1961

APPLICATION	USED ON	FINAL FINISH
		NONE
		NONE

QTY REQD	PART OR IDENTIFYING NO.	NOMENCLATURE OR DESCRIPTION	FIND NO.
LIST OF MATERIALS			
MIT INSTRUMENTATION LAB CAMBRIDGE, MASS		MANNED SPACECRAFT CENTER HOUSTON, TEXAS	
DRAWN <i>Ray Wheeler</i> DATE 29 Dec 62 CHECKED <i>W. Hayward</i> 4 DEC 62 APPROVAL <i>E.C. Hall</i> 11 Dec 62		<b>CAPACITOR, FIXED, TANTALUM</b> SPECIFICATION CONTROL DRAWING	
NASA APPROVAL <i>W. J. Rhee</i> 4-2-12-62		CODE IDENT NO.	NASA DRAWING NO.
MIT APPROVAL <i>W. J. Rhee</i> 12/12/62		SIZE <b>C</b>	<b>1006755</b>
		SCALE NONE WT	SHEET 1 OF 3