

**REQUIREMENTS:**

**1. GENERAL:**

- A. INTERPRET DRAWING IN ACCORDANCE WITH STANDARDS PRESCRIBED BY MIL-D-70327.
- B. THESE CAPACITORS SHALL CONFORM TO THE REQUIREMENTS OF MIL-C-26655/1B FOR STYLE CS15 CHARACTERISTIC B, WITH THE EXCEPTIONS AND ADDITIONS SPECIFIED IN THIS DRAWING.
- C. SUPPLIER SHALL CONFORM TO THE QUALITY ASSURANCE PROVISIONS IN ND 1015404 CLASS 2.
- (1) PERIODIC INSPECTIONS MAY BE SATISFIED BY THE SUBMISSION AND ACCEPTANCE OF CERTIFIED TEST DATA FOR PURCHASED PRODUCTION LOTS.
- D. CAPACITORS SHALL BE PACKAGED IN ACCORDANCE WITH SUPPLIERS NORMAL COMMERCIAL PRACTICE PER LEVEL C AS DEFINED IN MIL-C-26655.

## 2. INSPECTION AND ACCEPTANCE:

- A. MECHANICAL DIMENSIONS AND TOLERANCES PER DRAWING.
- B. LEAD MATERIAL SHALL BE NICKEL IN ACCORDANCE WITH ND PS1015400. CERTIFICATION OF COMPLIANCE SHALL ACCOMPANY EACH SHIPMENT.
  - (1) LEADS SHALL WITHSTAND A 4 POUND PULL MINIMUM WITHOUT IMPAIRMENT OF PERFORMANCE.
  - (2) LEADS SHALL WITHSTAND THE BEND TEST AS SPECIFIED IN MIL-C-26655 EXCEPT THE WEIGHT SHALL BE 2 POUNDS.
- C. MARKING:
  - (1) EACH CAPACITOR SHALL BE PERMANENTLY AND LEGIBLY MARKED WITH THE MANUFACTURER'S NAME AND/OR SYMBOL, TYPE NUMBER, CAPACITANCE VALUE AND TOLERANCE, VOLTAGE RATING AND POLARITY. EACH UNIT PACKAGE AND SHIPPING CONTAINER SHALL ALSO INCLUDE THE NASA DRAWING NO. DASH NO. AND REVISION LETTER.
- D. DOCUMENTATION:
  - (1) ALL PARTS SHALL BE SERIALIZED. ALL TEST DATA AND X-RAY NEGATIVES SHALL BE FORWARDED WITH PARTS. PARTS WHICH HAVE FAILED NEED NOT BE FORWARDED.

**E. ELECTRICAL REQUIREMENTS:**

- (1) RATED VOLTAGE PER TABLE II.
- (2) CAPACITANCE VALUE PER TABLE II.

### 3. DESIGN REQUIREMENTS:

- A. THE CAPACITORS SHALL MEET THE REQUIREMENTS OF MIL-C-26655/1B FOR:
- (1) DISSIPATION FACTOR.
  - (2) STABILITY AT HIGH AND LOW TEMPERATURES.
  - (3) OPERATING TEMPERATURE RANGE (-55°C TO +85°C AND 125°C OPERATION WITH DERATING PER MIL-C-26655/1B).
  - (4) SURGE VOLTAGE.

E	E
SHEET 1	SHEET 2
REVISION STATUS OF SHEETS	

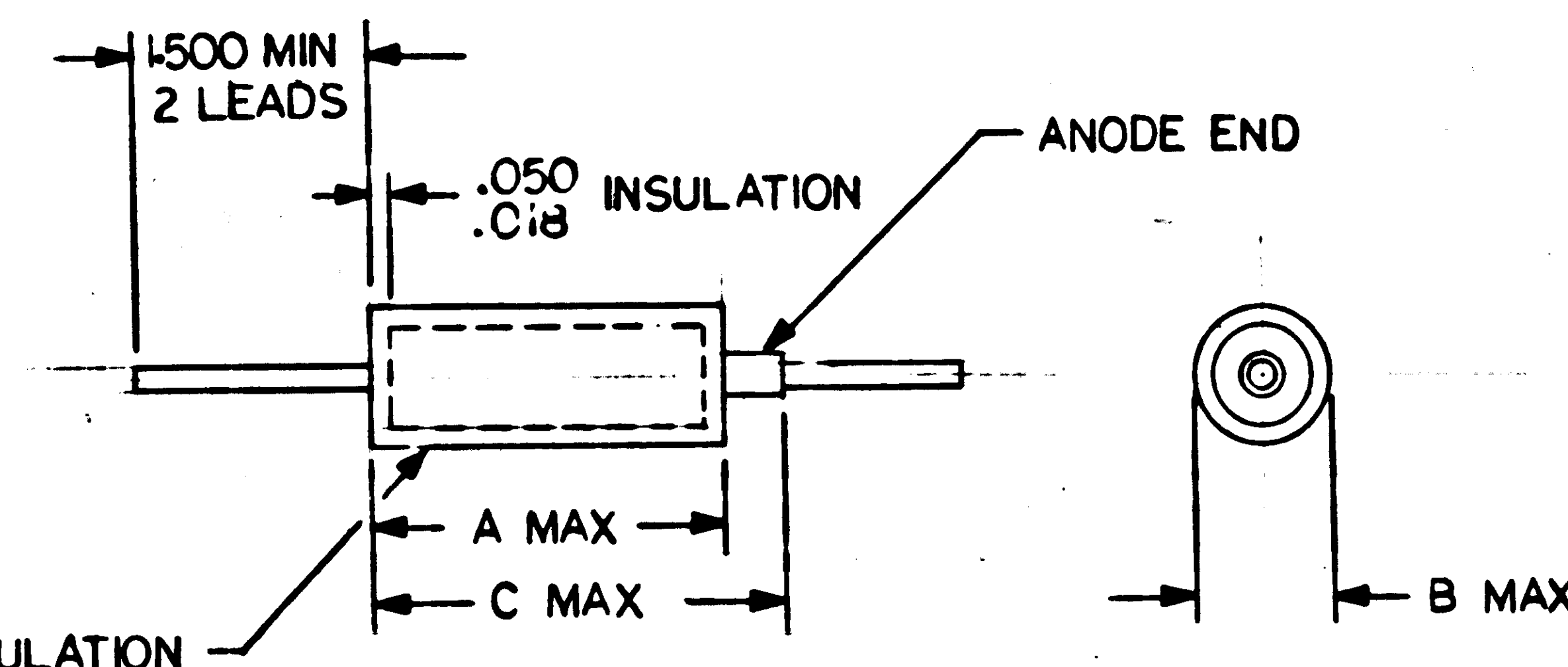
PROCURE ONLY FROM APPROVED SOURCES LISTED IN  
ND 1002034 FOR THIS DRAWING.

**4. SPECIAL CONDITIONING BY SUPPLIER:**

EVERY SHIPMENT SHALL BE TESTED ON A 100% BASIS,  
BY THE METHODS SPECIFIED TO ELIMINATE ALL  
SUBSTANDARD OR POTENTIALLY SUBSTANDARD UNITS.  
X-RAY INSPECTION SHALL BE PER MIL-STD-202 METHOD 209, AND SHALL  
BE ACCOMPLISHED PERPENDICULAR TO THE MAJOR AXIS OF THE CAPACITOR.  
THIS INSPECTION SHALL ELIMINATE ANY CAPACITORS HAVING LOOSE SOLDER PARTICLES  
OR HAVING INADEQUATE ANODE ANCHORAGE AND CONNECTION OR POOR ALIGNMENT.

**BURN-IN:** TO ELIMINATE ALL DEFECTIVE COMPONENTS.

EACH UNIT SHALL BE CONNECTED IN SERIES WITH A 3 OHM RESISTOR AND A 1 AMP FUSE: UNITS SHALL THEN BE TESTED AT RATED VOLTAGE AT 125°C MINIMUM OF 250 HOURS. ALL UNITS WHICH HAVE A BLOWN FUSE OR WHICH ARE OUTSIDE OF ALLOWABLE TOLERANCE FOR CAPACITANCE, DISSIPATION FACTOR, OR LEAKAGE CURRENT, WHEN TESTED AT 25°C ON COMPLETION OF BURN-IN SHALL BE DISCARDED.



(E) REPLACES REV D WITH CHANGES

QTY REQD	PART OR IDENTIFYING NO.	NOMENCLATURE OR DESCRIPTION		FIND NO.
LIST OF MATERIALS				
MIT INSTRUMENTATION LAB CAMBRIDGE, MASS.		MANNED SPACECRAFT CENTER HOUSTON, TEXAS		
DWG. NO.	CONTRACT			
DRAWN <u>LOUIS WALKER</u> DATE <u>5-4-63</u> CHECKED <u>JOE GROSS</u> <u>5/17/63</u> APPROVAL _____ APPROVAL _____		CAPACITOR FIXED ELECTROLYTIC SOLID TANTALUM SPECIFICATION CONTROL DRAWING		
NASA APPROVAL <u>[Signature]</u>	CODE IDENT NO.	SIZE <b>C</b>	NASA DRAWING NO. <b>1006755</b>	
MIT APPROVAL <u>WLC/PAF/63</u>	SCALE —	WT	SHEET 1	OF 2

INCHES

0 1 2

PHOTOGRAPHIC SCALE ONLY