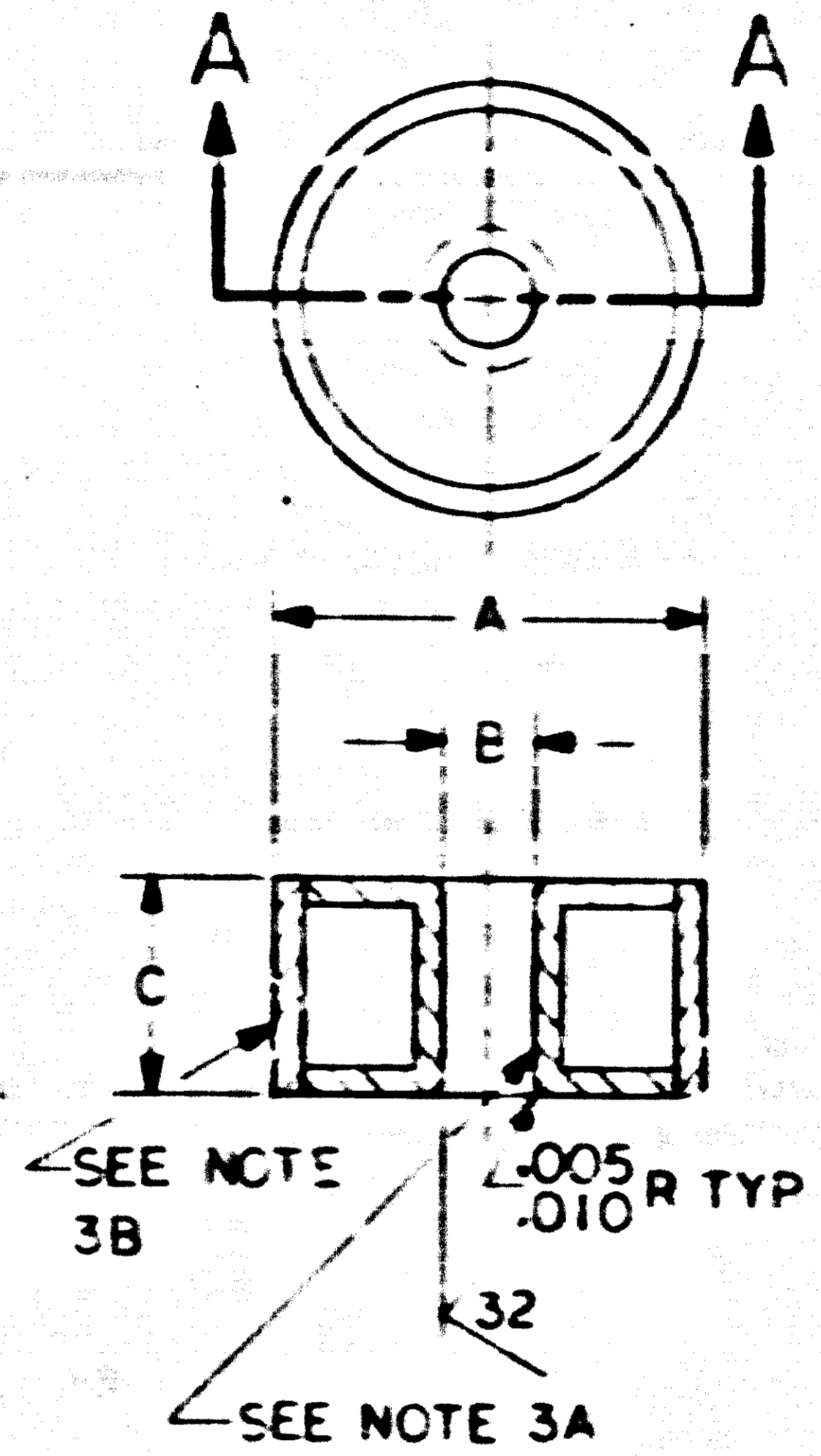


NOTICE - UNLESS OTHERWISE SPECIFIED, DIMENSIONS AND TOLERANCES ARE IN INCHES. DIMENSIONS ARE TO BE TAKEN TO THE CENTER OF THE PART UNLESS OTHERWISE SPECIFIED. DIMENSIONS ARE TO BE TAKEN TO THE CENTER OF THE PART UNLESS OTHERWISE SPECIFIED. DIMENSIONS ARE TO BE TAKEN TO THE CENTER OF THE PART UNLESS OTHERWISE SPECIFIED. DIMENSIONS ARE TO BE TAKEN TO THE CENTER OF THE PART UNLESS OTHERWISE SPECIFIED.

| F | 1006773 | REVISIONS |  |         |             |
|---|---------|-----------|--|---------|-------------|
|   |         | SYN       | DESCRIPTION  | DATE    | APPROVAL    |
|   |         | F         | REPLACES REV E WITH CHANGES AND UPGRADED TO CLASS A RELEASE PER TDRR 0200F | 7/11/63 | [Signature] |

1. GENERAL:
  - A. INTERPRET DRAWING IN ACCORDANCE WITH STANDARDS PRESCRIBED BY MIL-STD-70327.
  - B. SUPPLIER SHALL CONFORM TO THE QUALITY ASSURANCE PROVISIONS SPECIFIED IN ND 1015404, CLASS 2.
2. INSPECTION AND ACCEPTANCE:
  - A. MECHANICAL REQUIREMENTS
    - (1) PAINT THICKNESS TO BE UNIFORM FROM .002 - .005 ALL SURFACES
    - (2) MARKING - PACKING SLIPS AND EXTERNAL OR INTERNAL CONTAINERS SHALL BE MARKED WITH THE MANUFACTURERS NAME, PART NUMBER, AND NASA DRAWING NUMBER, DASH NUMBER AND REVISION LETTER.
  - B. ELECTRICAL REQUIREMENTS(100%)
    - (1) TESTING SHALL BE PERFORMED IN ACCORDANCE WITH ND 1002009
    - (2) PARAMETERS SHALL BE IN ACCORDANCE WITH TABLE I
3. DESIGN REQUIREMENTS:
  - A. BOBBIN MATERIAL SHALL BE 303 SST PER QQ-S-763B, PART SHALL BE FREE FROM BURRS
  - B. JACKET MATERIAL SHALL BE .011 THICK PHENOLIC SLEEVE



| NASA DRAWING NUMBER | DIM A        | DIM B    | DIM C        | CHARACTERISTICS |
|---------------------|--------------|----------|--------------|-----------------|
| 1006773-1           | .249<br>.240 | .140 MIN | .105<br>.090 | TABLE I         |
| 1006773-2           | .187<br>.174 | .100 MIN | .058 MIN     | TABLE II        |

TABLE I  
26 MAXWELL  
CORE FUNCTIONAL CHARACTERISTICS

| RAMP             | Tp<br>μ SEC        | Ts<br>μ SEC        | V1<br>MV           | V0<br>MV |
|------------------|--------------------|--------------------|--------------------|----------|
| 200 MA<br>μ SEC  | 2.5 ± 5%           | 1.5 MIN<br>2.1 MAX | 275 MIN<br>290 MAX | —        |
| 400 MA<br>μ SEC  | 1.4 MIN<br>1.6 MAX | 1.3 MIN<br>1.5 MAX | 320 MIN<br>430 MAX | —        |
| 1000 MA<br>μ SEC | —                  | —                  | —                  | 15 MIN   |

TABLE II  
11 MAXWELL  
CORE FUNCTIONAL CHARACTERISTICS

| RAMP             | Tp<br>μ SEC | Ts<br>μ SEC        | V1<br>MV           | V0<br>MV |
|------------------|-------------|--------------------|--------------------|----------|
| 270 MA<br>μ SEC  | 2.2 ± 5%    | 1.5 MIN<br>2.1 MAX | 100 MIN<br>130 MAX | —        |
| 400 MA<br>μ SEC  | 1.3 ± 5%    | 1.0 MIN<br>1.4 MAX | 145 MIN<br>190 MAX | —        |
| 1000 MA<br>μ SEC | —           | —                  | —                  | 9 MIN    |

PROCURE ONLY FROM APPROVED SOURCES LISTED ON ND 1002034 FOR THIS DRAWING.

|   |               |                |              |             |
|---|---------------|----------------|--------------|-------------|
| UNLESS OTHERWISE SPECIFIED DIMENSIONS ARE IN INCHES | TOLERANCES ON | FRACTIONS      | DECIMALS     | ANGLES      |
|   |               | ±              | ±            | ±           |
| DO NOT SCALE THIS DRAWING                           | MATERIAL      | HEAT TREATMENT | FINAL FINISH | APPLICATION |
| NEXT ASSY   | USED ON       |                |              |             |

F REPLACES REV E WITH CHANGES

|   |                        |  |              |
|---|------------------------|--|--------------|
| QTY REQD                                  | PART OR IDENTIFYING NO | NOMENCLATURE OR DESCRIPTION                  | FIND NO.     |
|   |                        | LIST OF MATERIALS                            |              |
| MIT INSTRUMENTATION LAB<br>CAMBRIDGE MASS |                        | MANNED SPACECRAFT CENTER<br>HOUSTON TEXAS    |              |
| DRAWN: [Signature] DATE: 7-11-63          |                        | CORE, MAGNETIC SPECIFICATION CONTROL DRAWING |              |
| CHECKED: [Signature] 7-11-63              |                        | NASA DRAWING NO<br>1006773                   |              |
| APPROVAL: [Signature]                     |                        | CODE IDENT NO                                | SIZE         |
| NASA APPROVAL: [Signature] 7-11-63        |                        |  | C            |
| MIT APPROVAL: [Signature]                 |                        | SCALE  | WT           |
|   |                        |  | SHEET 1 OF 1 |

