

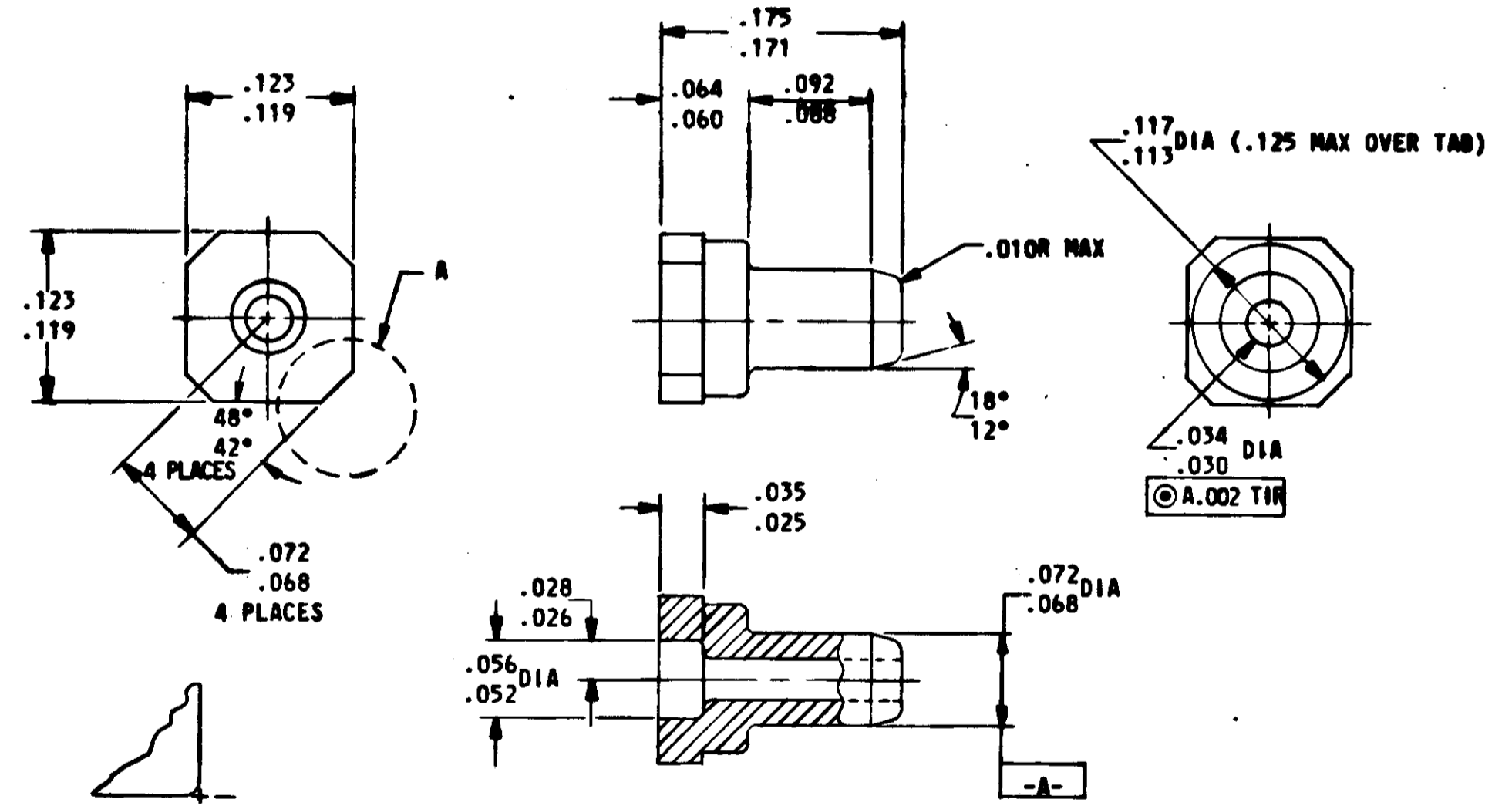
NOTICE - WHEN GOVERNMENT DRAWINGS, SPECIFICATIONS, OR OTHER DATA ARE USED FOR ANY PURPOSE OTHER THAN IN CONNECTION WITH A DEFINITELY RELATED GOVERNMENT PROCUREMENT OPERATION, THE UNITED STATES GOVERNMENT THEREBY INCURS NO RESPONSIBILITY FOR ANY OBLIGATION WHATSOEVER, AND THE FACT THAT THE GOVERNMENT MAY HAVE FORMULATED, FURNISHED, OR IN ANY WAY SUPPLIED THE SAID DRAWINGS, SPECIFICATIONS OR OTHER DATA IS NOT TO BE REGARDED BY IMPLICATION OR OTHERWISE AS IN ANY MANNER LICENSING THE HOLDER OR ANY OTHER PERSON OR CORPORATION, OR CONFERRING ANY RIGHTS OR PERMISSION TO MANUFACTURE, USE, OR SELL ANY PATENTED INVENTION THAT MAY IN ANY WAY BE RELATED THEREBY.

1006775

REVISIONS TO 00189 12-20			
SYM	DESCRIPTION	DATE	APPROVAL
-	ORIGINATED	-	-

NOTES:

1. REQUIREMENTS:
 - A. MATERIAL: POLYAMIDE (NYLON) PLASTIC PER MIL-P-17091, TYPE I.
 - B. SUPPLIER SHALL CONFORM TO THE QUALITY ASSURANCE PROVISIONS SPECIFIED IN NASA DOCUMENT ND 1015404 CLASS III.
2. INTERPRET DRAWING IN ACCORDANCE WITH STANDARDS PRESCRIBED BY MIL-D-70327.



ORIGINAL SOURCE OF SUPPLY:
 MALCO MANUFACTURING COMPANY
 CHICAGO, ILLINOIS
 CODE IDENT NO. 91886

VIEW A
 CORNER CONFIGURATION
 RADIUS OPTIONAL. NOT
 TO EXCEED SHARP

QTY REQD	PART OR IDENTIFYING NO.	NOMENCLATURE OR DESCRIPTION	FIND NO.
LIST OF MATERIALS			
MIT INSTRUMENTATION LAB CAMBRIDGE, MASS.		MANNED SPACECRAFT CENTER HOUSTON, TEXAS	
DRAWN <i>Ray Whelan</i> DATE 5 Dec 62 CHECKED <i>J. Whelan</i> 14 DEC 62 APPROVAL <i>J. Whelan</i> APPROVAL <i>J. Whelan</i>		INSULATOR, WRAPOST-MALE, MINIATURE SPECIFICATION CONTROL DRAWING	
HEAT TREATMENT NONE		CODE IDENT NO.	NASA DRAWING NO.
NEXT ASSY		SIZE C	1006775
APPLICATION		SCALE NONE	WT
		SHEET	OF

UNLESS OTHERWISE SPECIFIED DIMENSIONS ARE IN INCHES TOLERANCES ON	
FRACTIONS	DECIMALS
\pm	\pm
DO NOT SCALE THIS DRAWING	
MATERIAL SEE NOTES	
HEAT TREATMENT NONE	
FINAL FINISH NONE	
NEXT ASSY	USED ON
APPLICATION	

1006775

A