

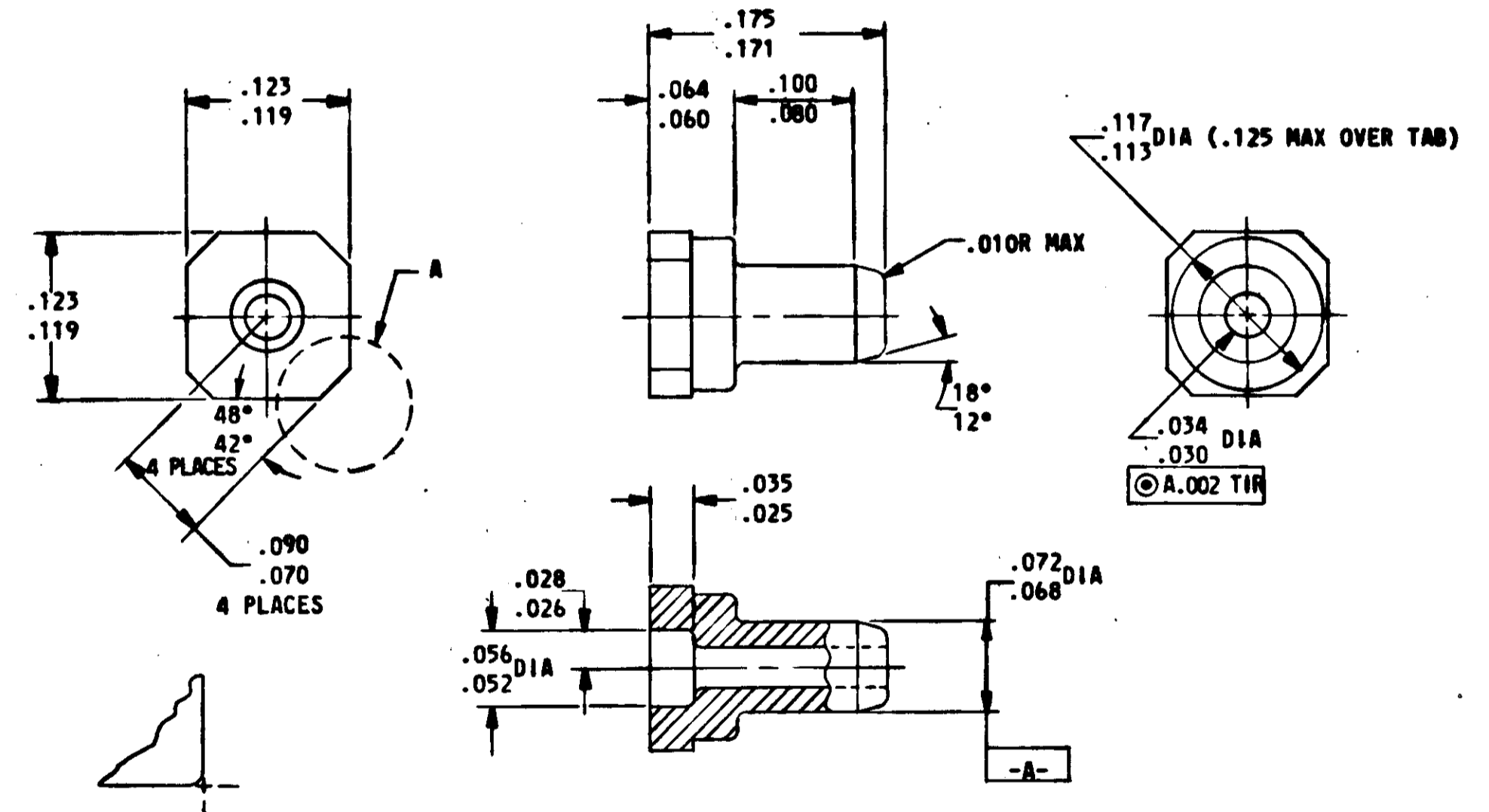
NOTICE - WHEN GOVERNMENT DRAWINGS, SPECIFICATIONS, OR OTHER DATA ARE USED FOR ANY PURPOSE OTHER THAN IN CONNECTION WITH A DEFINITELY RELATED GOVERNMENT PROCUREMENT OPERATION, THE UNITED STATES GOVERNMENT THEREBY INCURS NO RESPONSIBILITY NOR ANY OBLIGATION WHATSOEVER, AND THE FACT THAT THE GOVERNMENT MAY HAVE FORMULATED, FURNISHED, OR IN ANY WAY SUPPLIED THE SAID DRAWINGS, SPECIFICATIONS OR OTHER DATA IS NOT TO BE REGARDED BY IMPLICATION OR OTHERWISE AS IN ANY MANNER LICENSING THE HOLDER OR ANY OTHER PERSON OR CORPORATION, OR CONFERRING ANY RIGHTS OR PERMISSION TO MANUFACTURE, USE, OR SELL ANY PATENTED INVENTION THAT MAY IN ANY WAY BE RELATED THERETO.

1006775

REVISIONS TO 00189 12-20			
SYM	DESCRIPTION	DATE	APPROVAL
-	ORIGINATED	-	-
A	REVISED PER TDRR 01288	5/24/68	<i>[Signature]</i>

NOTES:

- REQUIREMENTS:
  - MATERIAL: POLYAMIDE (NYLON) PLASTIC PER MIL-P-17091, TYPE I.
  - SUPPLIER SHALL CONFORM TO THE QUALITY ASSURANCE PROVISIONS SPECIFIED IN NASA DOCUMENT MD 1015404 CLASS III.
- INTERPRET DRAWING IN ACCORDANCE WITH STANDARDS PRESCRIBED BY MIL-D-70327.



VIEW A  
CORNER CONFIGURATION  
RADIUS OPTIONAL. NOT  
TO EXCEED SHARP

ORIGINAL SOURCE OF SUPPLY:  
MALCO MANUFACTURING COMPANY  
CHICAGO, ILLINOIS  
CODE IDENT NO. 91886

QTY REQD	PART OR IDENTIFYING NO.	NOMENCLATURE OR DESCRIPTION	FIND NO.
LIST OF MATERIALS			
MIT INSTRUMENTATION LAB CAMBRIDGE, MASS.		MANNED SPACECRAFT CENTER HOUSTON, TEXAS	
DRAWN <i>[Signature]</i> DATE 5 Dec 62 CHECKED <i>[Signature]</i> 14 DEC 62 APPROVAL <i>[Signature]</i>		<b>INSULATOR, WRAPOST-MALE, MINIATURE SPECIFICATION CONTROL DRAWING</b>	
NASA APPROVAL <i>[Signature]</i> 12-20-62		CODE IDENT NO.	NASA DRAWING NO.
MIT APPROVAL <i>[Signature]</i>		SIZE <b>C</b>	<b>1006775</b>
APPLICATION		SCALE NONE	SHEET 1 OF 1

	UNLESS OTHERWISE SPECIFIED DIMENSIONS ARE IN INCHES
	TOLERANCES ON
	FRACTIONS    DECIMALS    ANGLES
	±                    ±                    ±
	DO NOT SCALE THIS DRAWING
	MATERIAL
	<b>SEE NOTES</b>
	HEAT TREATMENT
	<b>NONE</b>
NEXT ASSY	USED ON
	FINAL FINISH
	<b>NONE</b>

MASTER

INCHES