

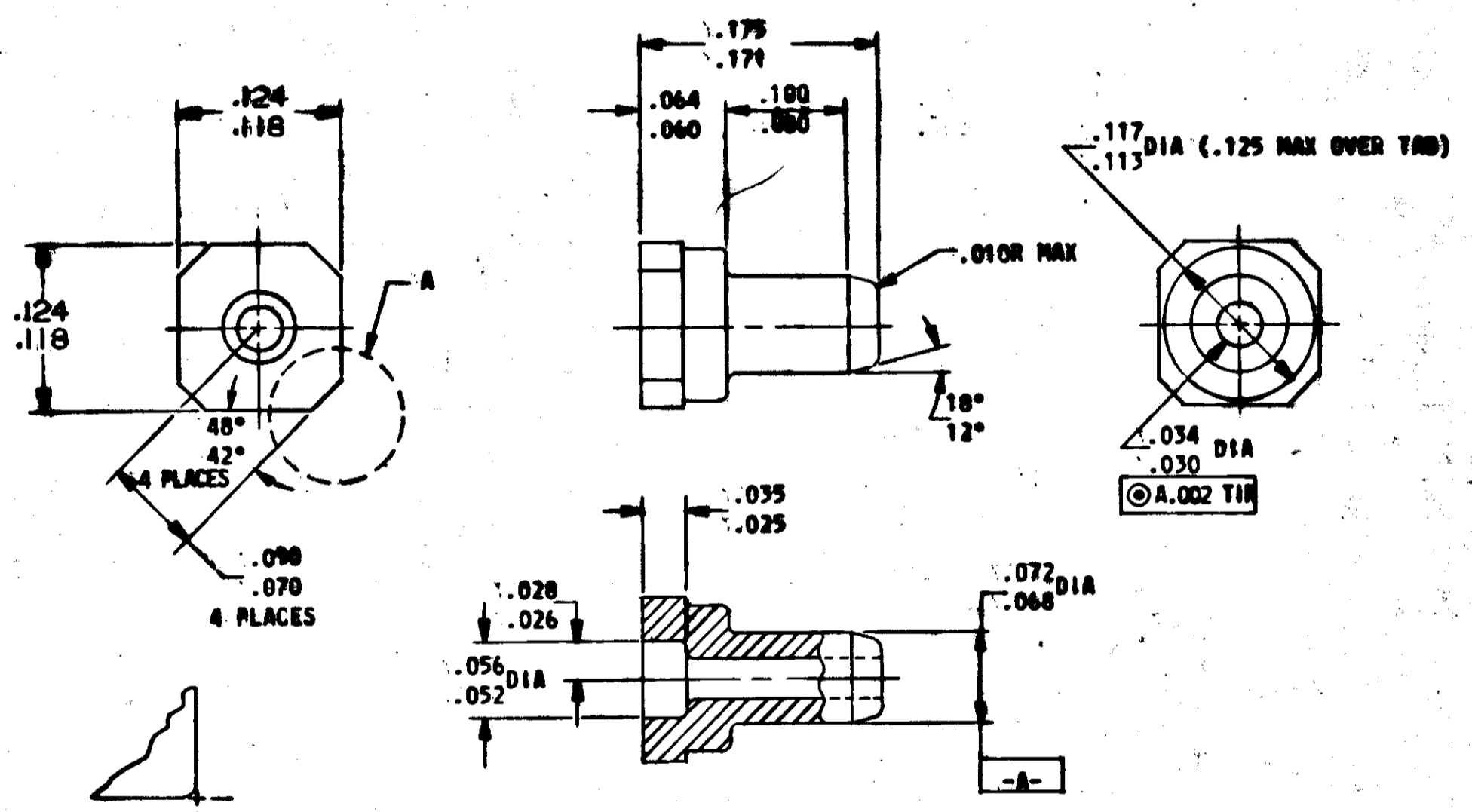
NOTICE - WHEN GOVERNMENT DRAWINGS, SPECIFICATIONS, OR OTHER DATA ARE USED FOR ANY PURPOSE OTHER THAN IN CONNECTION WITH A DEFINITELY RELATED GOVERNMENT PROCUREMENT OPERATION, THE UNITED STATES GOVERNMENT THEREBY INCURS NO RESPONSIBILITY NOR ANY OBLIGATION WHATSOEVER, AND THE FACT THAT THE GOVERNMENT MAY HAVE FORMULATED, FURNISHED, OR IN ANY WAY SUPPLIED THE SAID DRAWINGS, SPECIFICATIONS OR OTHER DATA IS NOT TO BE REGARDED BY IMPLICATION OR OTHERWISE AS IN ANY MANNER LICENSING THE HOLDER OR ANY OTHER PERSON OR CORPORATION, OR CONFERRING ANY RIGHTS OF PERMISSION TO MANUFACTURE, USE, OR SELL ANY PATENTED INVENTION THAT MAY IN ANY WAY BE RELATED THERETO.

B 1006775

REVISIONS TO BE MADE			
SYM	DESCRIPTION	DATE	APPROVAL
(P)	ORIGINATED		
(M)	A REVISED PER TDRR 01288	5/24/62	JA
	B REVISED PER TDRR 07622	4/16/62	JA

NOTES:

- REQUIREMENTS:
 - MATERIAL: POLYAMIDE (NYLON) PLASTIC PER MIL-P-17091, TYPE I.
 - SUPPLIER SHALL CONFORM TO THE QUALITY ASSURANCE PROVISIONS SPECIFIED IN NASA DOCUMENT ND 1015404 CLASS III.
- INTERPRET DRAWING IN ACCORDANCE WITH STANDARDS PRESCRIBED BY MIL-D-70327.



ORIGINAL SOURCE OF SUPPLY:
 MALCO MANUFACTURING COMPANY
 CHICAGO, ILLINOIS
 CODE IDENT NO. 91886

NOTED

VIEW A
 CORNER CONFIGURATION
 RADIUS OPTIONAL. NOT
 TO EXCEED SHARP

QTY REQD	PART OR IDENTIFYING NO.	NOMENCLATURE OR DESCRIPTION	FIND NO.
LIST OF MATERIALS			
MIT INSTRUMENTATION LAB CAMBRIDGE, MASS.		MANNED SPACECRAFT CENTER HOUSTON, TEXAS	
DRAWN <i>Ray Whelan</i> DATE 5/20/62		INSULATOR, WRAPOST-MALE, MINATURE SPECIFICATION CONTROL DRAWING	
CHECKED <i>J. Thompson</i> 14 DEC 62			
APPROVAL <i>J. Thompson</i>		CODE IDENT NO.	NASA DRAWING NO.
APPROVAL <i>J. Thompson</i>		SIZE C	1006775
HEAT TREATMENT NONE		SCALE NONE	WT
FINAL FINISH NONE		SHEET 1 OF 1	
NEXT ASSY	USED ON		
APPLICATION			

INCHES