

NOTICE - WHEN GOVERNMENT DRAWINGS, SPECIFICATIONS, OR OTHER DATA ARE USED FOR ANY PURPOSE OTHER THAN IN CONNECTION WITH A DEFINITELY RELATED GOVERNMENT PROCUREMENT OPERATION, THE UNITED STATES GOVERNMENT THEREBY INCURS NO RESPONSIBILITY NOR ANY OBLIGATION WHATSOEVER, AND THE FACT THAT THE GOVERNMENT MAY HAVE FORMULATED, FURNISHED, OR IN ANY WAY SUPPLIED THE SAID DRAWINGS, SPECIFICATIONS OR OTHER DATA IS NOT TO BE REGARDED BY IMPLICATION OR OTHERWISE AS IN ANY MANNER LICENSING THE HOLDER OR ANY OTHER PERSON OR CORPORATION, OR CONFERRING ANY RIGHTS OR PERMISSION TO MANUFACTURE, USE, OR SELL ANY PATENTED INVENTION THAT MAY IN ANY WAY BE RELATED THERETO.

E 1006781

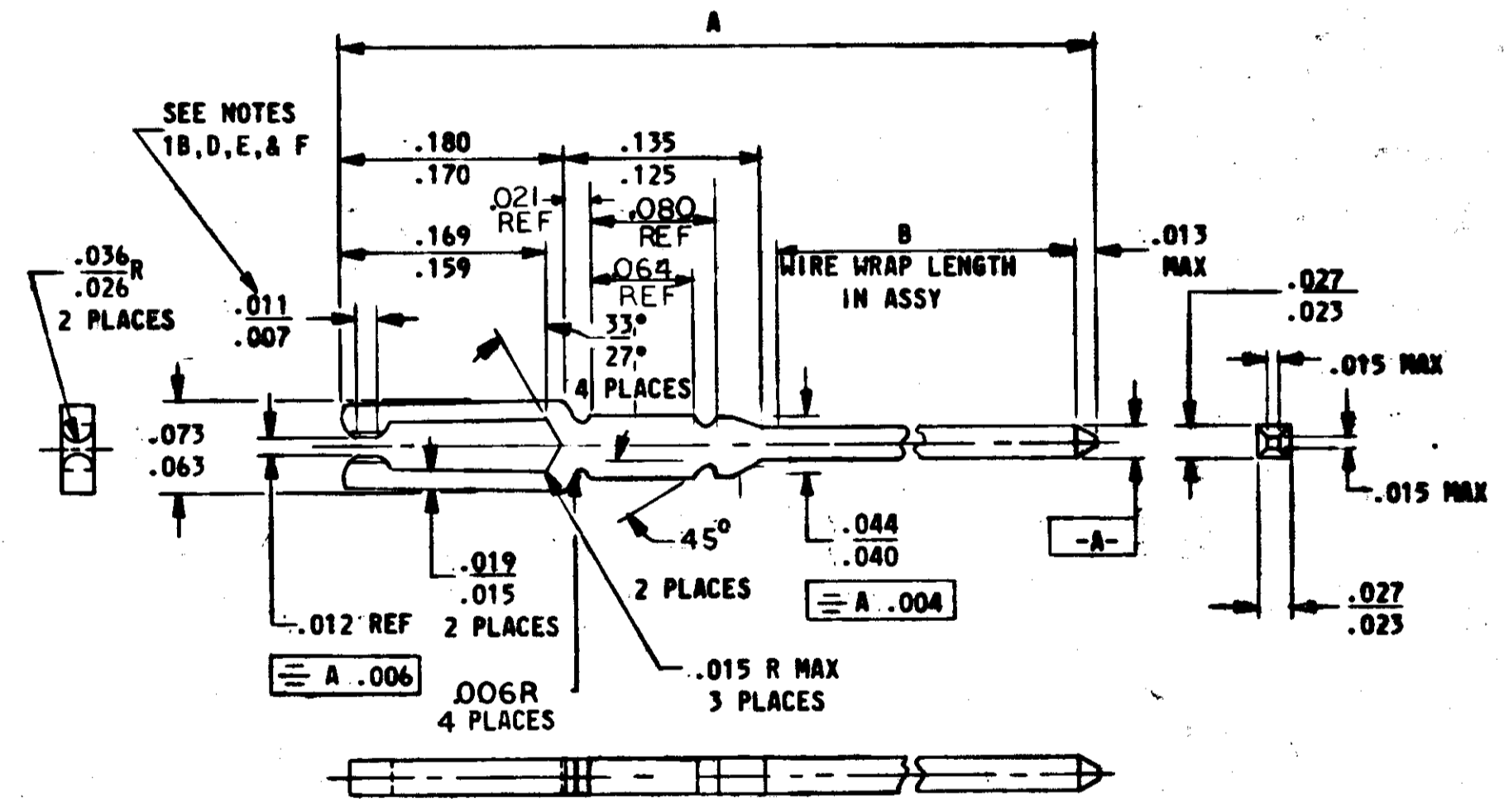
REVISIONS TORR 00189 12-20-63

SYM	DESCRIPTION	DATE	APPROVAL
	ORIGINATED		
A	REVISED PER TDRR 03036	10/20/63	WJK
B	REVISED PER TDRR 07004	17/06/63	WJK
C	REVISED PER TDRR 06704	2/10/64	WJK
D	REVISED PER TDRR 11328	4/26/64	WJK
E	REVISED PER TDRR 13666	7/14/64	WJK

NOTES:

- REQUIREMENTS:
 - MATERIAL: BERYLLIUM COPPER PER QQ-C-533.
 - FINISH: GOLD PLATE, .000050 MINIMUM THICKNESS PER MIL-6-45204, TYPE II OVER SILVER PLATE PER QQ-S-365, .0002 MINIMUM THICKNESS AT CONTACT AREA.
 - HEAT TREATMENT: PER MIL-H-7199, ROCKWELL 39-30N SCALE.
 - SURFACE QUALITY: $\sqrt{50}$ PER STANDARD MIL-STD-10 AT CONTACT AREA.
 - INSERTION: 10 OUNCES MAXIMUM.
 - RETENTION: 3 OUNCES MINIMUM.
 - SUPPLIER SHALL CONFORM TO THE QUALITY ASSURANCE PROVISIONS SPECIFIED IN NASA DOCUMENT NO 1015404 CLASS III.
- INTERPRET DRAWING IN ACCORDANCE WITH STANDARDS PRESCRIBED BY MIL-D-70327.
- MARKING:
 - INTERNAL AND EXTERNAL PACKAGES SHALL BE MARKED PER ND1002019 WITH THE FOLLOWING:
 - SUPPLIERS NAME
 - NASA DRAWING NUMBER, REVISION LETTER, AND DASH NO.
 - SUPPLIERS LOT NUMBER & DATE OF MANUFACTURE
 - MANUFACTURER'S PART NO. MAY APPEAR ON THE PACKAGE.

DASH NO.	DIMENSIONS		MALCO PART NUMBER
	A	B REF	
1	.518 .508	.175	
2	.693 .683	.350	
3	.843 .833	.500	5190002
4	.668 .658	.325	



PROCURE ONLY FROM APPROVED SOURCES LISTED ON ND 1002034 FOR THIS DRAWING.

QTY REQD	PART OR IDENTIFYING NO.	NOMENCLATURE OR DESCRIPTION	FIND NO.
LIST OF MATERIALS			
MIT INSTRUMENTATION LAB CAMBRIDGE, MASS.		MANNED SPACECRAFT CENTER HOUSTON, TEXAS	
DRAWN <i>Ray Whelan</i> DATE 307m62 CHECKED <i>W. M. ...</i> 13 DEC 62		CONTACT, WRAPOST, FEMALE, MINIATURE SPECIFICATION CONTROL DRAWING	
APPROVAL <i>Joe ...</i> APPROVAL <i>Bob ...</i>			
NASA APPROVAL <i>W. J. ...</i> 12-20-63		CODE IDENT NO.	NASA DRAWING NO.
MIT APPROVAL <i>W. J. ...</i> 20 Dec 63		SIZE C	1006781
APPLICATION		SCALE NONE	SHEET 1 OF 1

NOTED

INCHES