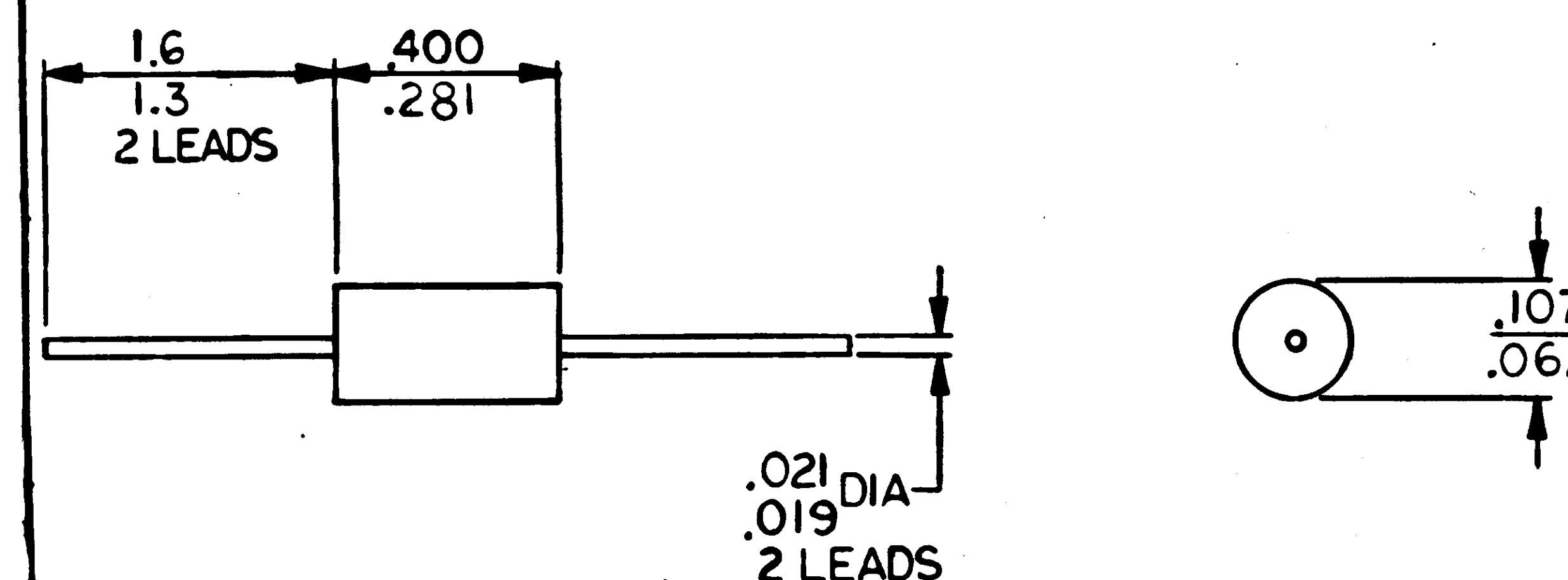
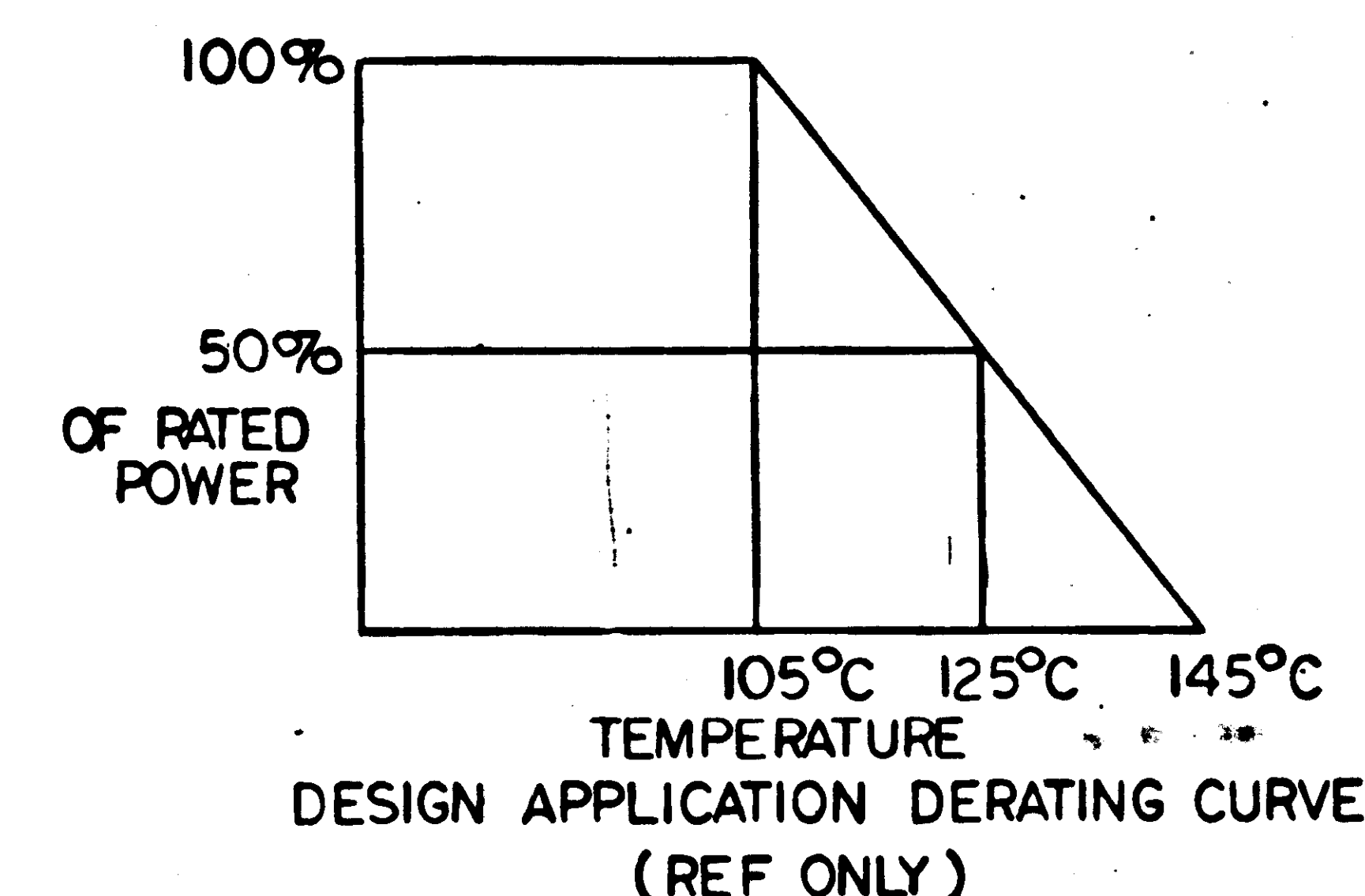


**REQUIREMENTS:**

**1. GENERAL:**

- A. INTERPRET DRAWING IN ACCORDANCE WITH STANDARDS PRESCRIBED BY MIL-D-70327.
  - B. UNITS SHALL MEET THE REQUIREMENTS OF MIL-R-93 WITH ANY ADDITIONS AND EXCEPTIONS AS NOTED HEREIN. UNITS SHALL BE CAPABLE OF MEETING THE QUALIFICATION REQUIREMENTS OF ND 1002057.
  - C. SUPPLIER SHALL CONFORM TO THE QUALITY ASSURANCE PROVISIONS AS CONTAINED IN ND 1015404 CLASS 2.
  - D. MARKING: UNITS SHALL BE MARKED IN ACCORDANCE WITH MIL-STD-130 WITH RESISTANCE VALUE, TOLERANCE, MANUFACTURER'S NAME/OR SYMBOL AND TYPE NUMBER. THE CONTAINER SHALL BE MARKED IN ACCORDANCE WITH MIL-STD-129 WITH THE MANUFACTURER'S NAME IDENTIFYING NUMBER, ITEM NAME, NASA DRAWING NUMBER, DASH NUMBER AND REVISION LETTER.
  - E. LEADS SHALL BE NICKEL IN ACCORDANCE WITH ND 1015400.  
A CERTIFICATE OF COMPLIANCE WITH THIS REQUIREMENT SHALL ACCOMPANY EACH SHIPMENT.
2. ACCEPTANCE AND INSPECTION:
- A. MECHANICAL DIMENSIONS PER DRAWING.
  - B. ELECTRICAL:
    - (1) RESISTANCE SHALL BE AS SPECIFIED IN TABLE.
    - (2) RESISTANCE SHALL BE MEASURED  $3/8 \pm 1/64$  INCH FROM THE RESISTOR BODY.
    - (3) RESISTANCE TOLERANCE:  $\pm 1\%$
3. DESIGN REQUIREMENTS:
- A. POWER RATING: 1/4 WATT
  - B. OPERATING TEMPERATURE RANGE:  $-55^{\circ}\text{C}$  TO  $145^{\circ}\text{C}$
  - C. TEMPERATURE COEFFICIENT: 50 PPM/ $^{\circ}\text{C}$
4. SPECIAL CONDITIONING BY SUPPLIER:
- A. TEMPERATURE CYCLING
    - (1) ALL RESISTORS SHALL BE TEMPERATURE CYCLED IN ACCORDANCE WITH MIL-R-93 PARAGRAPH 4.6.4.  
ALL PARTS NOT MEETING PARAGRAPH 2.8.1, AND 3 AFTER TEST SHALL BE REJECTED.
  - B. BURN IN:
    - (1) ALL RESISTORS SHALL BE SUBJECTED TO A 50 HOUR FULL POWER BURN IN AT  $125^{\circ}\text{C}$  AMBIENT TEMPERATURE. UNITS EXHIBITING A VARIATION OF RESISTANCE IN EXCESS OF  $\pm 0.2\%$  OR CHANGE OUTSIDE OF SPECIFIED TOLERANCE SHALL BE REJECTED. RESISTANCE SHALL BE MEASURED BEFORE AND AFTER TEST, AND DATA IDENTIFIABLE TO EACH RESISTOR SUPPLIED WITH EACH SHIPMENT.

DASH NO.	RESISTANCE IN OHMS	INDUCTANCE $\mu$ H MAX
1	4.7	0.1
2	4.8	0.1
3	4.9	0.1
4	5.0	0.1
5	5.1	0.1
6	10	0.13
7	15	0.13
8	20	0.14
9	27	0.17
10	33	0.20
11	39	0.21
12	47	0.25
13	19.5	0.14
14	20.5	0.14
15	2.4	0.1
16	1.7	0.1
17	1.75	0.1
18	1.8	0.1
19	1.85	0.1
20	1.9	0.1
21	1.95	0.1
22	2.0	0.1
23	2.05	0.1
24	2.1	0.1
25	2.15	0.1
26	2.2	0.1
27	2.25	0.1
28	2.3	0.1
29	2.5	0.1
30	2.6	0.1
31	2.7	0.1
32	2.8	0.1
33	2.9	0.1
34	3.0	0.1
35	3.1	0.1



© REPLACES REV B WITH CHANGES

PROCURE ONLY FROM APPROVED SOURCES LISTED ON  
ND 1002034 FOR THIS DRAWING.

NEXT ASSY	USED ON
APPLICATION	

UNLESS OTHERWISE SPECIFIED		
DIMENSIONS ARE IN INCHES		
TOLERANCES ON		
FRACTIONS	DECIMALS	ANGLES
$\pm$	$\pm$	$\pm$
<u>        </u>	<u>        </u>	<u>        </u>
DO NOT SCALE THIS DRAWING		
MATERIAL		
SEE NOTES		
HEAT TREATMENT		
NONE		
FINAL FINISH		
NONE		

QTY REQD	PART OR IDENTIFYING NO.	NOMENCLATURE OR DESCRIPTION	FIND NO.
LIST OF MATERIALS			
MIT INSTRUMENTATION LAB CAMBRIDGE, MASS.  DWS. NO.                  CONTRACT		MANNED SPACECRAFT CENTER HOUSTON, TEXAS	
DRAWN <u>R. Kane</u> DATE <u>20 May 63</u> CHECKED <u>George J. Red</u> <u>20 May 63</u> APPROVAL <u>J. D. Marshall</u> <u>22 May 63</u> APPROVAL <u>E. C. Hall</u> <u>22 May 63</u>		RESISTOR , FIXED, WIREWOUND  SPECIFICATION CONTROL DRAWING	
NASA APPROVAL <u>L. J. Smith</u> <u>5/16/63</u>		CORE IDENT NO.	NASA DRAWING NO.
		SIZE <b>C</b>	<b>1006788</b>
MIT APPROVAL <u>J. Nohel</u> <u>5/12/63</u>		SCALE NONE	WT SHEET OF

