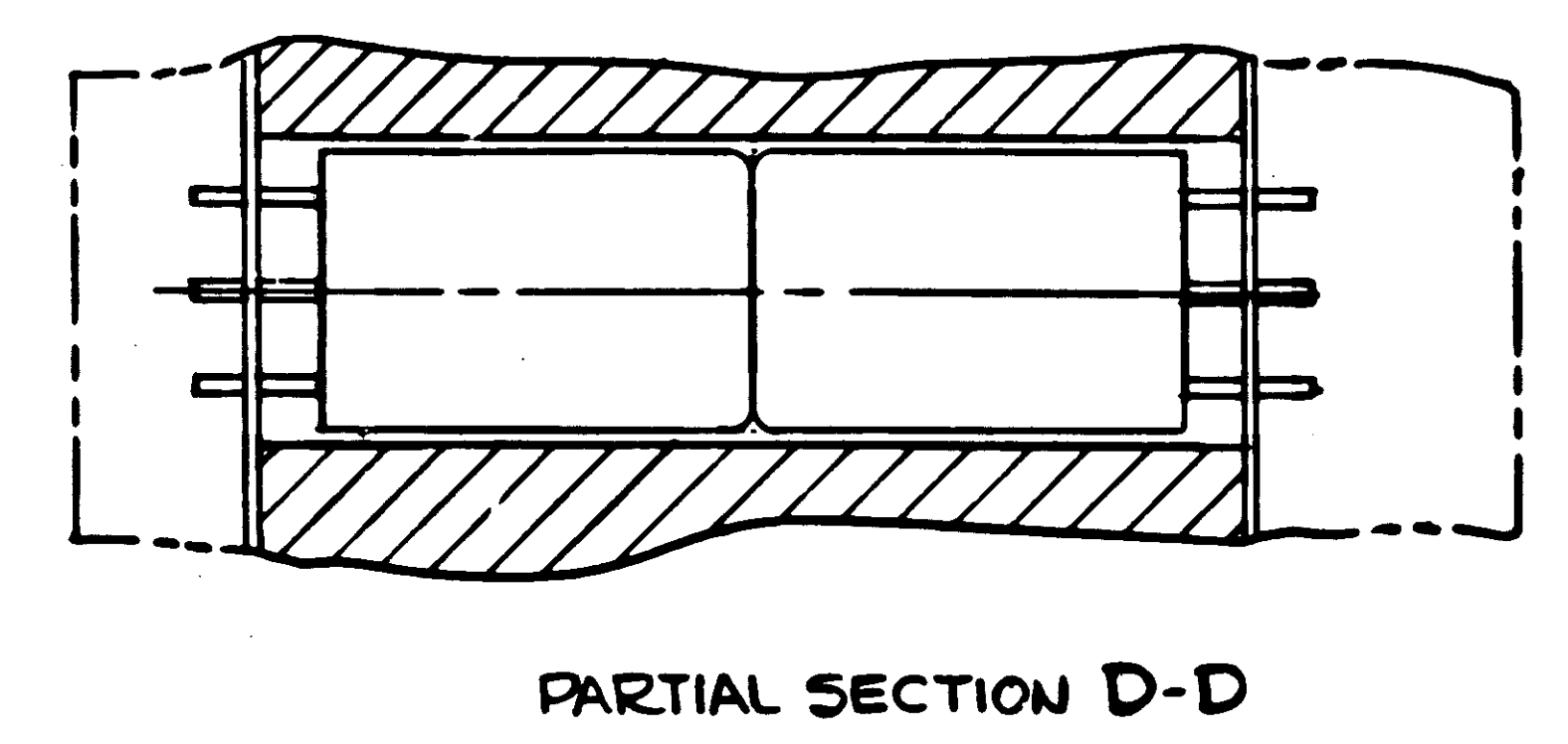
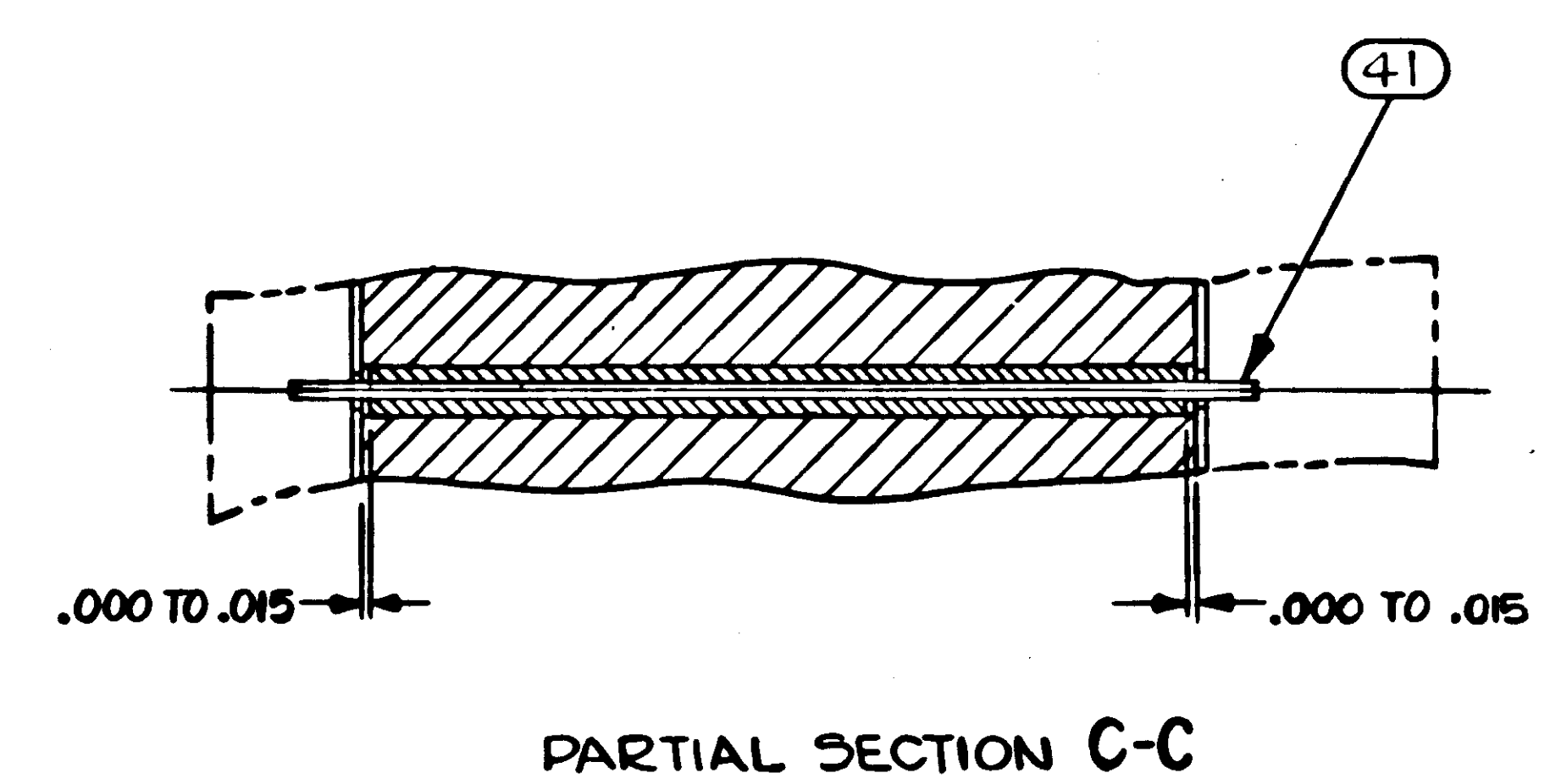
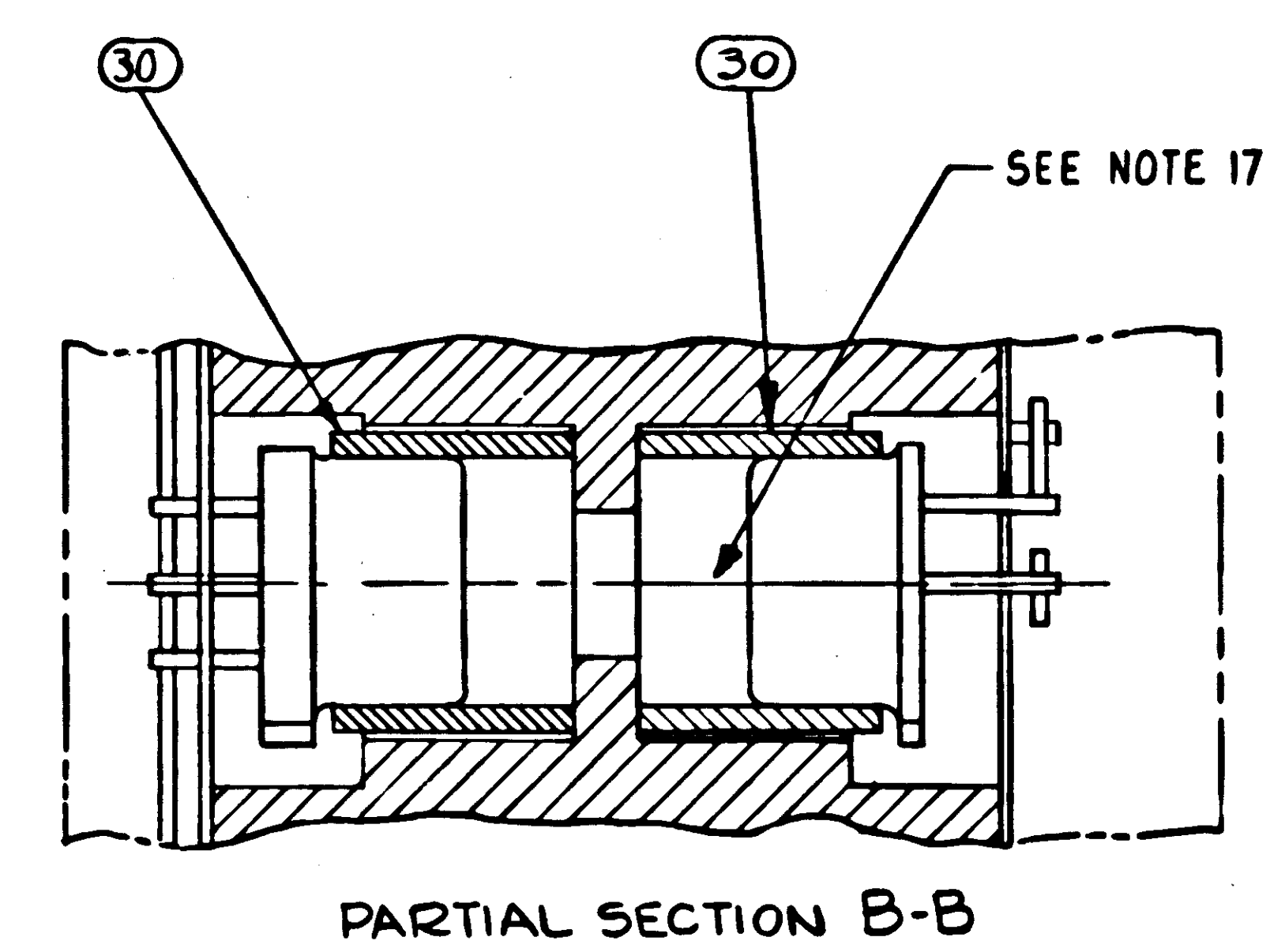
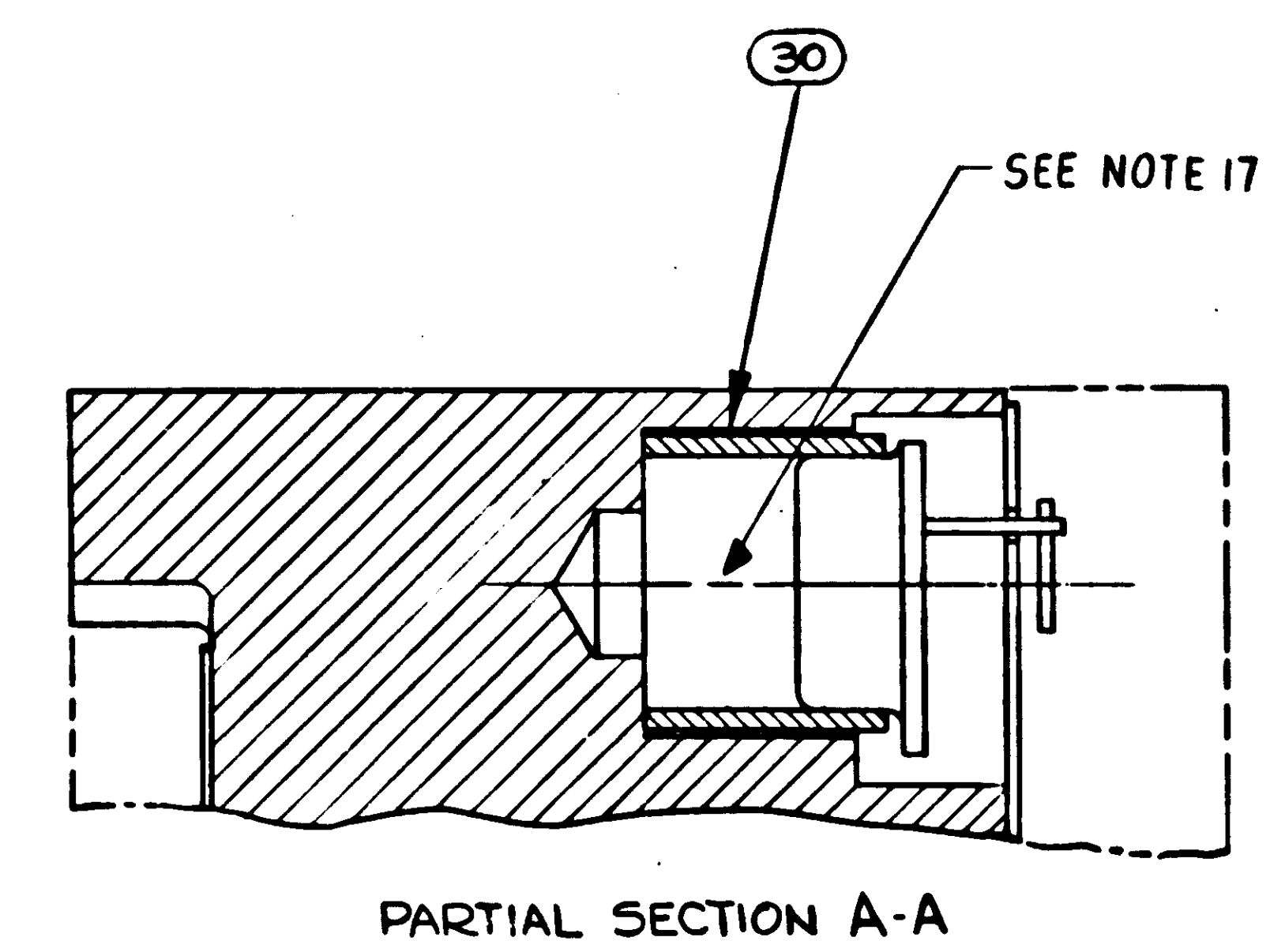
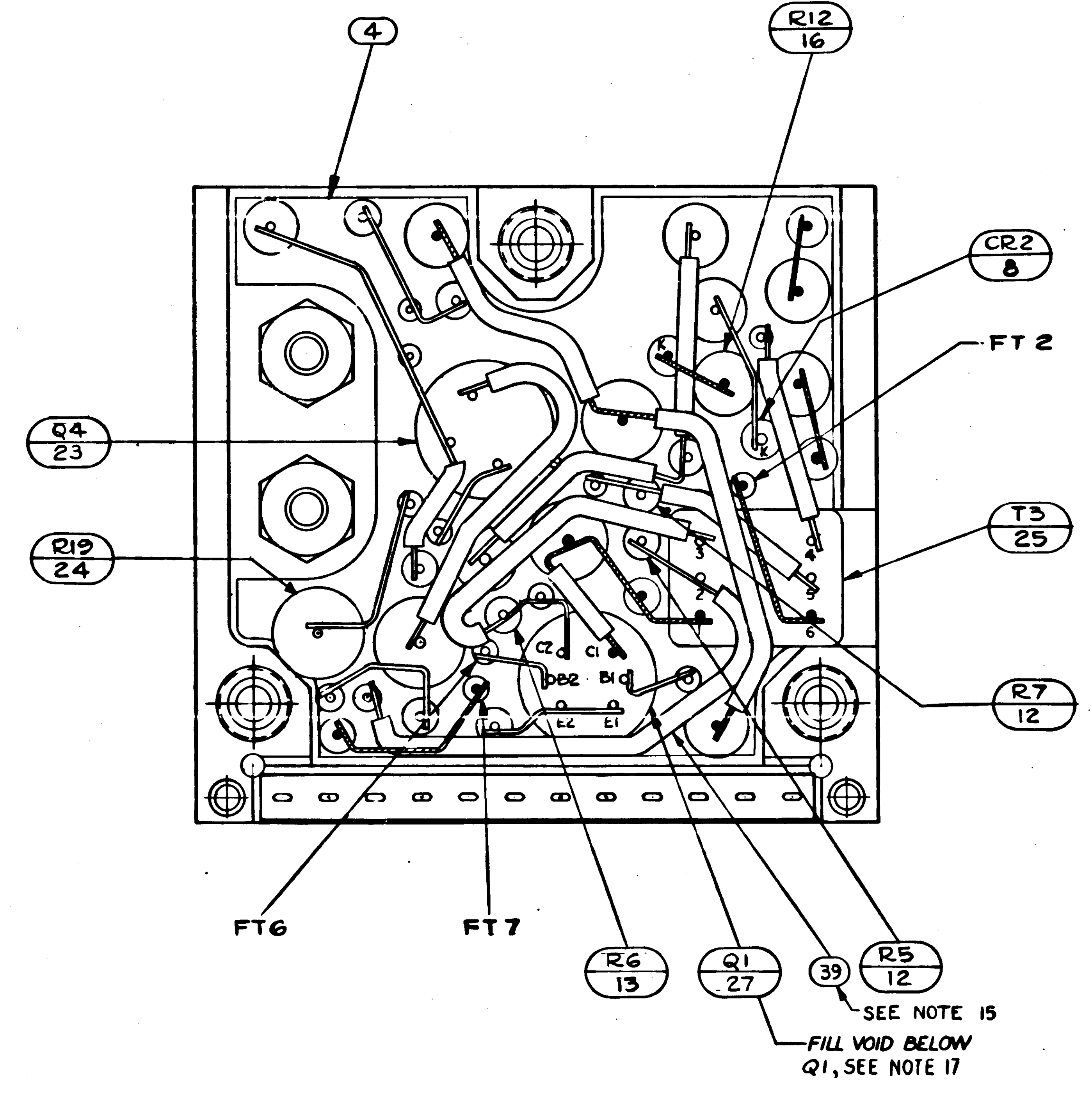
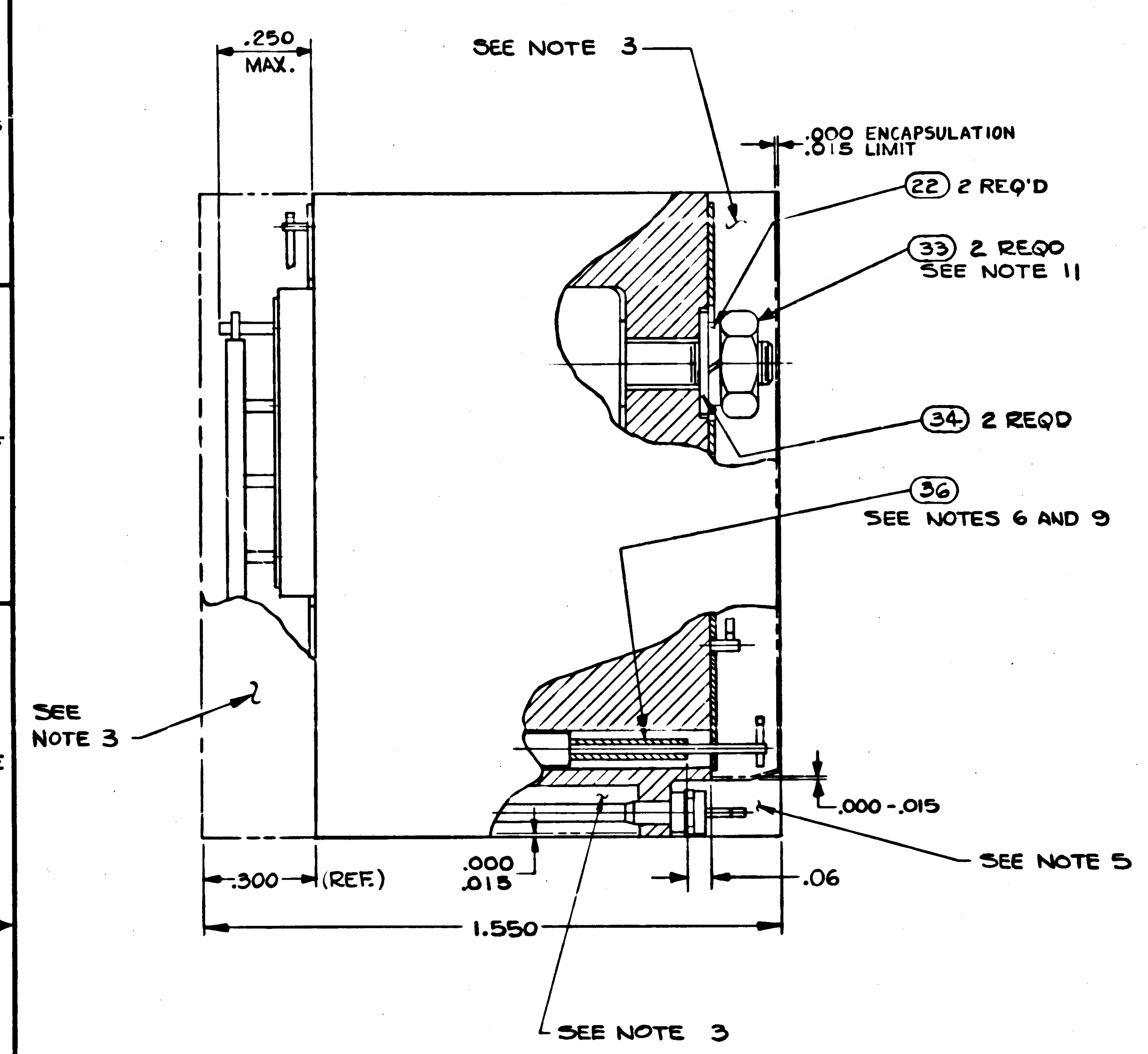


REVISIONS				
SYM	ZONE	DESCRIPTION	DATE	APPD
Δ		REVISED PER TDRR 17331	10 MAR 65	GM
B		REVISED PER TDRR 19403	2 JUN 65	GM
C		REVISED PER TDRR 19429	3 JUN 65	GM
D		REVISION STATUS CHG PER TDRR 23000	17 JUN 65	GM
E		REVISION STATUS CHANGE	17 JUN 65	GM
F		REVISED PER TDRR 22949	17 JUN 65	GM
G		REVISED PER TDRR 23888	17 JUN 65	GM
H		REVISION STATUS CHANGED	23 FEB 66	GM
J		REVISION STATUS CHANGED	17 FEB 66	GM



UNLESS OTHERWISE SPECIFIED DIMENSIONS ARE IN INCHES TOLERANCES ON	INSTRUMENTATION LAB NASA DREW: <i>Chapel</i> 4/20/64 DATE: <i>4/20/64</i> CHECKED: <i>Richard</i> 2/28/66 APPROVAL: <i>[Signature]</i>	MANNED SPACECRAFT CENTER HOUSTON, TEXAS
DO NOT SCALE THIS DRAWING	NASA APPROVAL: <i>[Signature]</i> MIT APPROVAL: <i>[Signature]</i>	GIMBAL COARSE ALIGN AMPLIFIER MODULE ASSY
MATERIAL:	CONTRACT NAS 9-497	CODE IDENT NO: 80230 SCALE 5:1
		SIZE: E 1007541 SHEET 2 OF 2