

NOTICE - WHEN GOVERNMENT DRAWINGS, SPECIFICATIONS, OR OTHER DATA ARE USED FOR ANY PURPOSE OTHER THAN IN CONNECTION WITH A DEFINITELY RELATED GOVERNMENT PROCUREMENT OPERATION, THE UNITED STATES GOVERNMENT THEREBY INCURS NO RESPONSIBILITY NOR ANY OBLIGATION WHATSOEVER, AND THE FACT THAT THE GOVERNMENT MAY HAVE FORMULATED, FURNISHED OR IN ANY WAY SUPPLIED THE SAID DRAWINGS, SPECIFICATIONS OR OTHER DATA IS NOT TO BE REGARDED BY IMPLICATION OR OTHERWISE AS IN ANY MANNER LICENSING THE HOLDER OR ANY OTHER PERSON OR CORPORATION, OR CONFERRING ANY RIGHTS OR PERMISSION TO MANUFACTURE, USE, OR SELL ANY PATENTED INVENTION THAT MAY IN ANY WAY BE RELATED THERETO.

REVISIONS			
SYM	DESCRIPTION	DATE	APPROVAL
-			
A	REVISED PER TDRR 00804	10/24/63	W.K.
B	REPLACED BY REV C WITH CHANGES PER TDRR 02107		

REQUIREMENTS:

UNITS SHALL BE IN ACCORDANCE WITH MIL-T-27A, TYPE TF5RX13ZZ IN ADDITION TO THE REQUIREMENTS SPECIFIED HEREIN.

GROUP I (INSPECTION BY SUPPLIER AND USER):

LEAD DATA: NICKEL LEADS PER NASA DOCUMENT ND 1015400. A CERTIFICATE OF COMPLIANCE WITH THIS REQUIREMENT SHALL ACCOMPANY EACH SHIPMENT.

POLARITY: TERMINALS 1 AND 4 SHALL HAVE THE SAME INSTANTANEOUS POLARITY.

ELECTRICAL CHARACTERISTICS: PER TABLE I.

MATCHING IMPEDANCE

DC RESISTANCE

TURNS RATIO

POWER LEVEL

MARKING: UNITS SHALL BE MARKED PER MIL-STD-130 WITH THE MANUFACTURER'S NAME, TRADE-MARK OR CODE AND TYPE DESIGNATION, AND SCHEMATIC SHOWING LEAD IDENTIFICATION.

GROUP II (DESIGN REQUIREMENTS):

ELECTRICAL SPECIFICATION: PER TABLE I

UNITS SHALL MEET THE QUALIFICATION REQUIREMENTS OF ND 1002047.

UNITS SHALL MEET INDUCED VOLTAGE REQUIREMENTS OF MIL-T-27A.

SUPPLIERS SHALL CONFORM TO THE QUALITY ASSURANCE PER NASA DOCUMENT 1015404, CLASS 2.

INTERPRET DRAWING IN ACCORDANCE WITH STANDARDS PRESCRIBED BY MIL-D-70327.

GENERAL NOTE:

UNLESS OTHERWISE SPECIFIED, DIMENSIONS ARE IN INCHES. DIMENSIONS IN PARENTHESES ARE PERMITTED TOLERANCES.

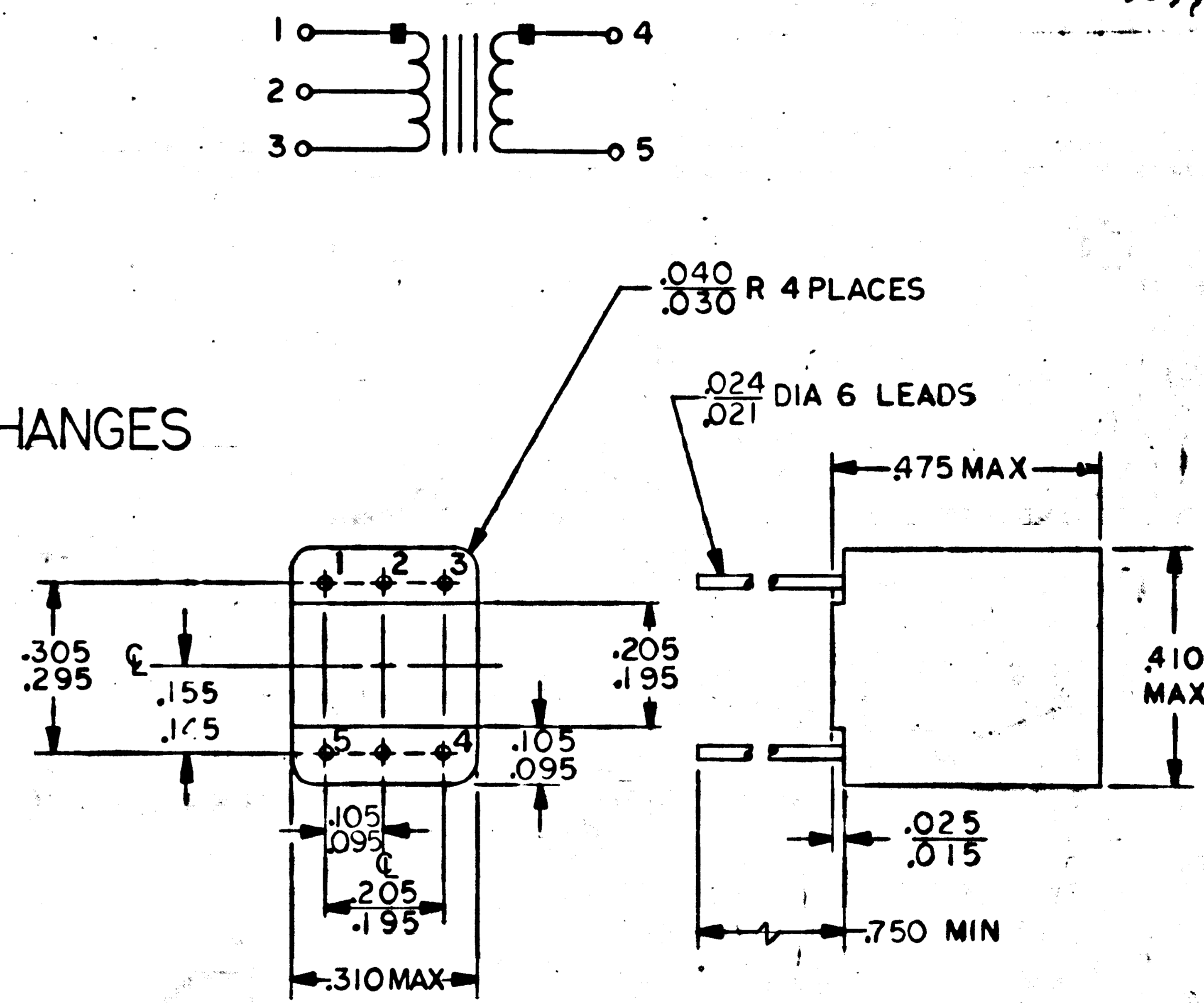
UNLESS OTHERWISE SPECIFIED, DIMENSIONS ARE IN INCHES. DIMENSIONS IN PARENTHESES ARE PERMITTED TOLERANCES.

UNLESS OTHERWISE SPECIFIED, DIMENSIONS ARE IN INCHES. DIMENSIONS IN PARENTHESES ARE PERMITTED TOLERANCES.

REPLACED BY REV C WITH CHANGES

TABLE I

DASH	ELECTRICAL CHARACTERISTICS AT T _a = 65°C								
	POWER LEVEL	MATCHING IMPEDANCE		UNBALANCED DC CURRENT IN PRIMARY	DC RESISTANCE (±20%)		TURNS RATIO (±3%)	TEST VOLTAGE	INSULATION RESISTANCE (AT 500 VDC)
		PRIMARY	SECONDARY		PRIMARY	SECONDARY			
DASH 1	MW	OHMS	OHMS	MA DC	OHMS	OHMS	-	V _{RMS}	MEG OHM
	50	1500 CT	600	3	168	92	1.58:1	500	10 K (MIN)
DASH 2	50	600 CT	12	4.5	77	3	7.06:1	500	10 K (MIN)
DASH 3	50	8,000 CT	3.2	1	790	.76	50:1	500	10K (MIN)



PROCURE ONLY FROM APPROVED SOURCES LISTED IN ND 1002034 FOR THIS DRAWING.

QTY REQD	PART OR IDENTIFYING NO.	NOMENCLATURE OR DESCRIPTION	FIND NO.
LIST OF MATERIALS			
MIT INSTRUMENTATION LAB CAMBRIDGE, MASS.		MANNED SPACECRAFT CENTER HOUSTON, TEXAS	
DRAWN <i>C. G. Carter</i> DATE <i>30 Mar 63</i>		TRANSFORMER, AUDIO	
CHECKED <i>E. S. Parker</i> DATE <i>22 Mar 63</i>		SPECIFICATION CONTROL DRAWING	
APPROVAL <i>W. J. Morgan</i> DATE <i>3/19/63</i>		APPROVAL	
MATERIAL		NASA APPROVAL <i>W. J. Morgan</i> DATE <i>3/19/63</i>	
UNLESS OTHERWISE SPECIFIED DIMENSIONS ARE IN INCHES TOLERANCES ON		CODE IDENT NO. SIZE	
FRACTIONS DECIMALS ANGLES		C	
± ± ±		NASA DRAWING NO. 1010291	
DO NOT SCALE THIS DRAWING		SCALE NONE WT	
MATERIAL SEE NOTES		SHEET 1 OF 1	
HEAT TREATMENT NONE			
FINAL FINISH NONE			
NEXT ASSY	USED ON		
APPLICATION			

