

NOTICE - WHEN GOVERNMENT DRAWINGS, SPECIFICATIONS, OR OTHER DATA ARE USED FOR ANY PURPOSE OTHER THAN IN CONNECTION WITH A DEFINITELY RELATED GOVERNMENT PROCUREMENT OPERATION, THE UNITED STATES GOVERNMENT THEREBY INCURS NO RESPONSIBILITY NOR ANY OBLIGATION WHATSOEVER, AND THE FACT THAT THE GOVERNMENT MAY HAVE FORMULATED, FURNISHED OR IN ANY WAY SUPPLIED THE SAID DRAWINGS, SPECIFICATIONS OR OTHER DATA IS NOT TO BE REGARDED BY IMPLICATION OR OTHERWISE AS IN ANY MANNER LICENSING THE HOLDER OR ANY OTHER PERSON OR CORPORATION OR CONVEYING ANY RIGHTS OR PERMISSION TO MANUFACTURE, USE OR SELL ANY PATENTED INVENTION THAT MAY IN ANY WAY BE RELATED THERETO.

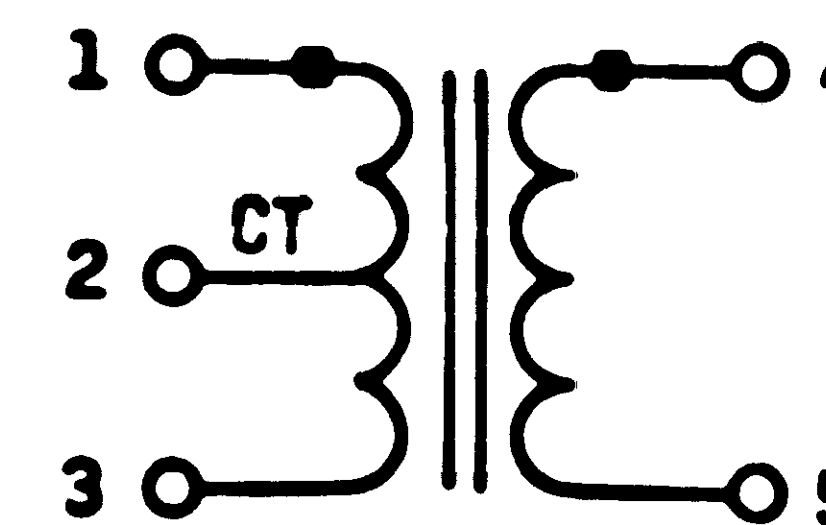
#### REQUIREMENTS:

##### GENERAL:

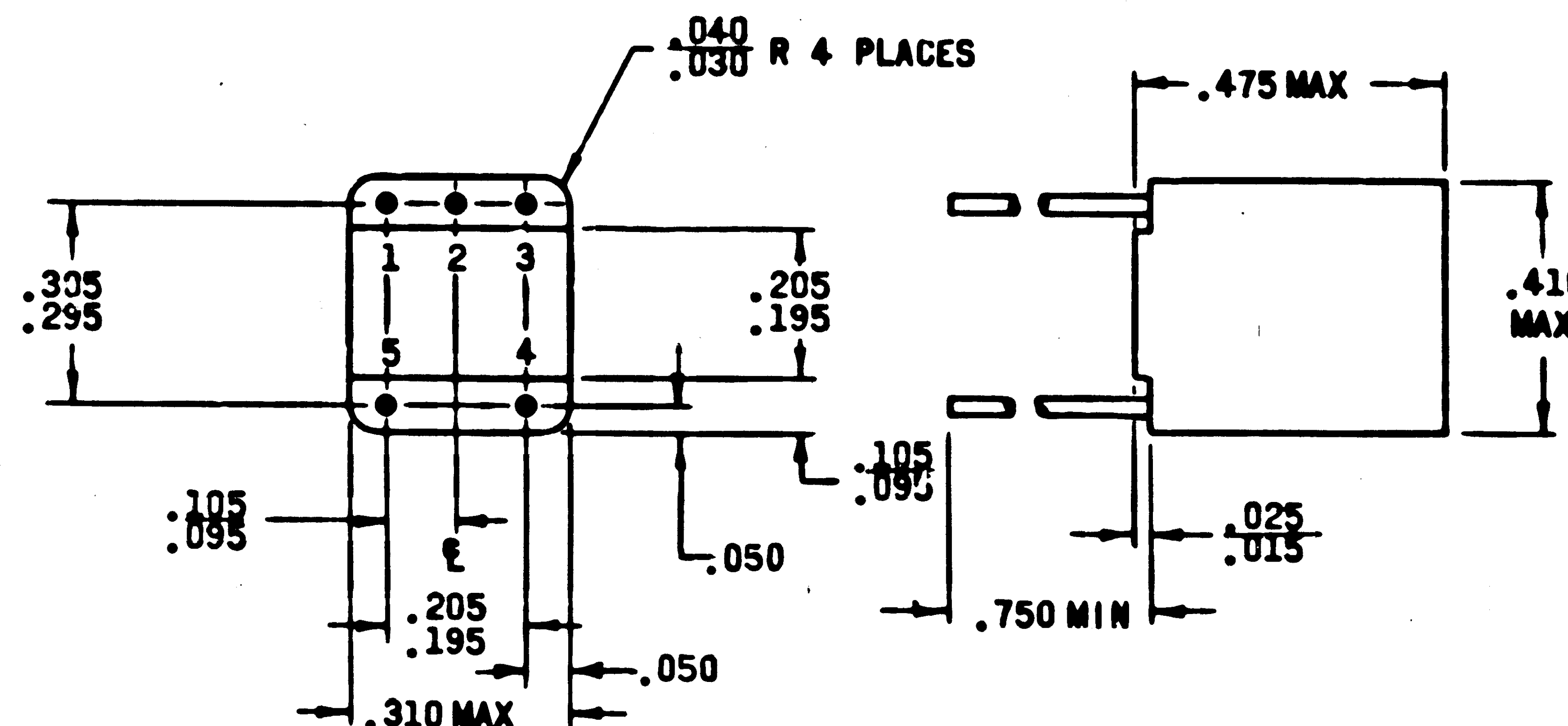
DESIGN TO BE IN CONFORMANCE WITH SPECIFICATION MIL-T-27 AND ND 1015400 (FOR LEADS) AS PROVIDED BELOW.  
SUPPLIER SHALL CONFORM TO THE QUALITY ASSURANCE PROVISIONS AS CONTAINED IN SPECIFICATION ND 1015404, CLASS 2.  
INTERPRET DRAWING SYMBOLS, ABBREVIATIONS AND REFERENCE DESIGNATIONS IN ACCORDANCE WITH GOVERNMENT STANDARDS PRESCRIBED IN MIL-D-70327.

##### INSPECTION AND ACCEPTANCE:

UNIT SHALL MEET ALL REQUIREMENTS OF TABLE I.  
SEALING: REFERENCE PARAGRAPH 4.7.3.2.1 MIL-T-27.  
DIELECTRIC STRENGTH: APPLY 500 VOLTS (RMS) BETWEEN WINDINGS. REFERENCE PARAGRAPH 4.7.5 MIL-T-27.  
INSULATION RESISTANCE: 10,000 MEGOHMS MINIMUM AT 25°C. REFERENCE PARAGRAPH 4.7.7 MIL-T-27.  
DC RESISTANCE: SEE TABLE I. REFERENCE PARAGRAPH 4.7.9.3 MIL-T-27.  
PRIMARY IMPEDANCE: APPLY VOLTAGE AND FREQ SPECIFIED IN TABLE I TO LEADS (1-3). SECONDARY OPEN.  
FREQUENCY RESPONSE (REFERENCE FREQUENCY 1000 CPS): SEE TEST CIRCUIT I.  $E_s$  SHALL BE DETERMINED AT 1 KC, OUTPUT POWER AT 50 MW, AND TEST CONDITIONS SPECIFIED IN TABLE I.  $E_s$  SHALL BE HELD CONSTANT OVER THE FREQUENCY RANGE. REFERENCE PARAGRAPH 4.7.9.7 MIL-T-27.  
NO LOAD VOLTAGE RATIO: SEE TABLE I. MEASURE WITH 2 VOLTS, 1000 CPS (1-3). CENTER TAP LOCATION  $1:1 \pm 1.5\%$ . REFERENCE PARAGRAPH 4.7.9.17 MIL-T-27.  
POLARITY: LEADS SPECIFIED IN TABLE I SHALL BE LIKE POLARITY. REFERENCE PARAGRAPH 4.7.9.14 MIL-T-27.  
MINIMUM MARKING: THE NASA DRAWING NUMBER, DASH NUMBER, AND REVISION LETTER, MANUFACTURER'S NAME OR SYMBOL, SERIAL NUMBER, AND LEAD IDENTIFICATION SHALL BE PERMANENTLY AND LEGIBLY MARKED ON UNIT. MANUFACTURER'S PART OR TYPE NUMBER MAY APPEAR ON PART OR PACKAGE.  
LEADS: NICKEL ALLOY 200-1/8 HARD,  $0.020 \pm .001$ . LEADS SHALL CONFORM TO ND 1015400 EXCEPT FOR PARAGRAPH 3.3.2, FINISHED LEAD DIAMETER. A CERTIFICATE OF COMPLIANCE WITH THIS REQUIREMENT SHALL ACCOMPANY EACH SHIPMENT.



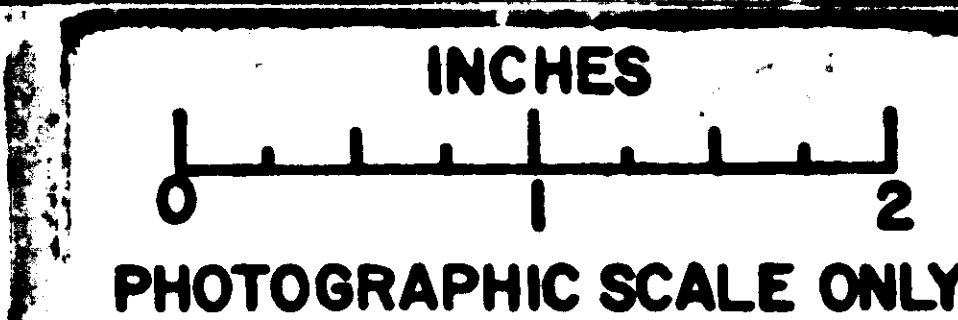
VOLTAGES AND CURRENTS ARE RMS VALUES UNLESS OTHERWISE NOTED



C	C
SHEET 1	SHEET 2
REVISION STATUS OF SHEETS	

C REPLACES REV B WITH CHANGE

QTY REQD	PART OR IDENTIFYING NO.	NOMENCLATURE OR DESCRIPTION	FIND NO.
LIST OF MATERIALS			
MIT INSTRUMENTATION LAB CAMBRIDGE MASS 02139 CONTRACT 497		MANNED SPACECRAFT CENTER HOUSTON, TEXAS	
DRAWN <i>Jamoula</i> DATE 25 JUNE 63 CHECKED <i>W. J. J. 26 June 63</i> APPROVAL <i>W. J. J. 27/1/63</i>		TRANSFORMER, AUDIO	
MATERIAL SEE NOTES		SPECIFICATION CONTROL DRAWING	
HEAT TREATMENT NONE		NASA APPROVAL <i>W. J. J. 27/1/63</i>	CODE IDENT NO. SIZE C 1010291
FINAL FINISH NONE		MIT APPROVAL <i>W. J. J. 27/1/63</i>	SCALE NONE WT SHEET 1 OF 2
NEXT ASSY	USED ON		
APPLICATION			



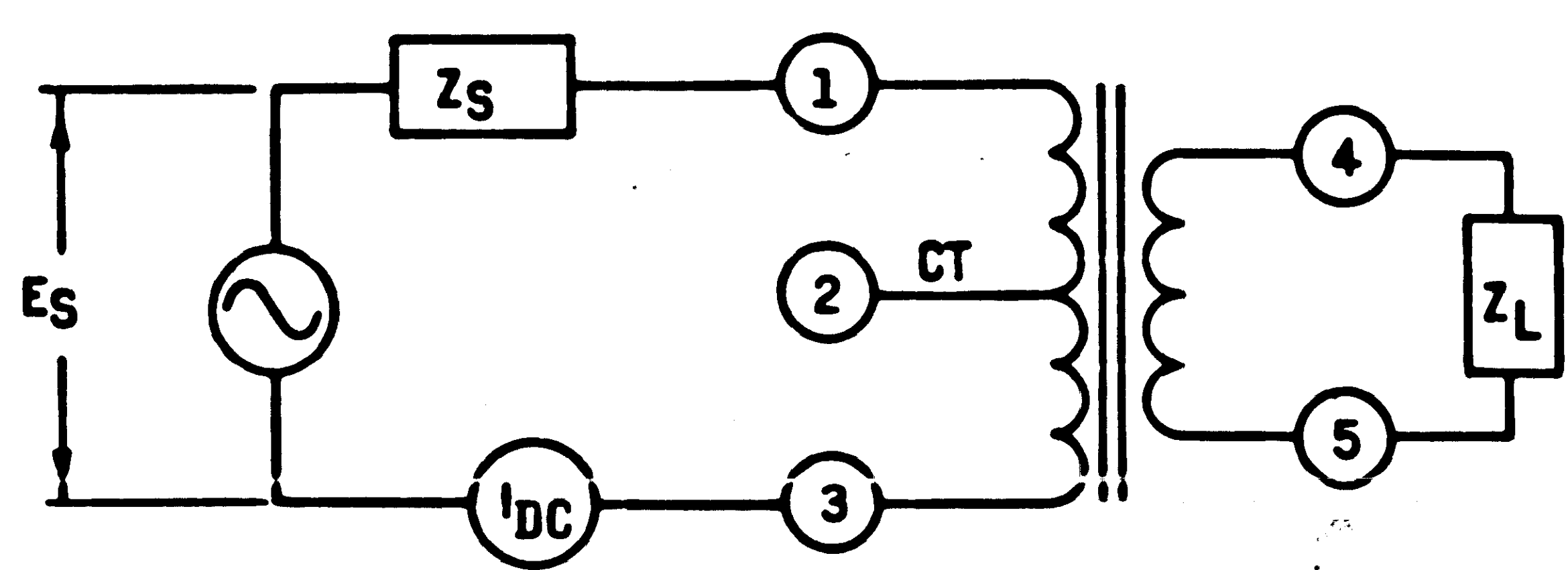


NOTICE - WHEN GOVERNMENT DRAWINGS, SPECIFICATIONS, OR OTHER DATA ARE USED FOR ANY PURPOSE OTHER THAN IN CONNECTION WITH A DEFINITELY RELATED GOVERNMENT PROCUREMENT OPERATION, THE UNITED STATES GOVERNMENT THEREBY INCURS NO RESPONSIBILITY NOR ANY OBLIGATION WHATSOEVER, AND THE FACT THAT THE GOVERNMENT MAY HAVE FORMULATED, FURNISHED, OR IN ANY WAY SUPPLIED THE SAID DRAWINGS, SPECIFICATIONS, OR OTHER DATA IS NOT TO BE REGARDED BY IMPLICATION OR OTHERWISE AS IN ANY MANNER LICENSING THE HOLDER OR ANY OTHER PERSON OR CORPORATION, OR CONVEYING ANY RIGHT OR PERMISSION TO MANUFACTURE, USE, OR SELL ANY PATENTED INVENTION THAT MAY IN ANY WAY BE RELATED THEREBY.

1620101

REVISIONS			
SYM	DESCRIPTION	DATE	APPROVAL
C	THIS SHEET ADDED AND UPGRADED TO CLASS A RELEASE PER TORR 02107	7/17/63	214

DESIGN REQUIREMENTS:  
THE UNIT SHALL BE CAPABLE OF MEETING ALL REQUIREMENTS OF MIL-T-27 FOR GRADE 5, CLASS R, LIFE EXPECTANCY X, FAMILY PER TABLE 1, IN AMBIENT TEMPERATURE OF 85°C.  
THE UNIT SHALL BE CAPABLE OF MEETING ALL ELECTRICAL REQUIREMENTS EXCEPT WHERE NOTED BEFORE, DURING, AND AFTER THE FOLLOWING EXPOSURES.  
HIGH TEMPERATURE: 71°C OPERATING  
LOW TEMPERATURE: -18°C OPERATING  
VIBRATION: 10 TO 2000 CPS, 20 G (PER MIL-STD-202, METHOD 204 A, CONDITION D)  
REDUCED PRESSURE: 96 HOURS AT A PRESSURE OF 10<sup>-4</sup> MM OF MERCURY.



FREQUENCY RESPONSE TEST CIRCUIT

DC UNBALANCE IN PRIMARY: PER TABLE 1  
RATED POWER LEVEL: 50 MW  
WORKING VOLTAGE BETWEEN WINDINGS AND FROM WINDINGS TO CASE: 175 VOLTS MAXIMUM INSTANTANEOUS.

SPECIAL CONDITIONING, 100% (BY MANUFACTURER):  
TRANSFORMER SHALL BE TEMPERATURE CYCLED FOR 5 CYCLES PER MIL-STD-202, METHOD 102A EXCEPT THAT THE TEMPERATURES SHALL BE -55°C, +25°C AND +105°C AND EXPOSURE TIME SHALL BE 15 MINUTES AT EACH TEMPERATURE. DURING THE LAST CYCLE THE UNIT SHALL BE TESTED FOR CONTINUITY AT EACH OF THE AMBIENT CONDITIONS. AFTER STABILIZATION AT ROOM TEMPERATURE UNIT SHALL PASS NORMAL INSPECTION TESTS.

TABLE I														
NASA PART NUMBER	DC RESISTANCE ● 25°C ±20%		PRIMARY IMPEDANCE (MINIMUM)			FREQUENCY RESPONSE					POLARITY	NO LOAD VOLTAGE RATIO ± 3% PRIMARY : SECONDARY	MAX. DC MA UNBALANCE	FAMILY
			OHMS	TEST VOLTAGE	FREQ CPS	TEST CONDITIONS								
	PRIMARY	SECONDARY				Z <sub>S</sub>	Z <sub>L</sub>	I <sub>DC</sub> MA	BAND WIDTH	RESPONSE				
1010291-1	168 Ω	92 Ω	1600 (Z)	5 VOLTS	300	1,500	600	3	350 CPS TO 90KC	±1DB	1 AND 4	1.58 : 1	3	13
-2	77 Ω	3 Ω	1130 (X <sub>L</sub> )	1 VOLT	300	600	12	4.5	300 CPS TO 60KC	± 2 DB	1 AND 4	7.06 : 1	4.5	17
-3	790 Ω	0.76 Ω	15,000 (X <sub>L</sub> )	4 VOLTS	300	8,000	3.2	1	300 CPS TO 60KC	± 2 DB	1 AND 4	50 : 1	1	13

REVC THIS SHEET ADDED

PROCURE ONLY FROM APPROVED SOURCES LISTED ON ND 1002034 FOR THIS DRAWING.

		UNLESS OTHERWISE SPECIFIED DIMENSIONS ARE IN INCHES TOLERANCES ON FRACTIONS DECIMALS ANGLES ± ± ± DO NOT SCALE THIS DRAWING MATERIAL
		HEAT TREATMENT
		FINAL FINISH
NEXT ASSY	USED ON	
APPLICATION		

QTY REQD	PART OR IDENTIFYING NO.	NOMENCLATURE OR DESCRIPTION	FIND NO.
		LIST OF MATERIALS	
		MIT INSTRUMENTATION LAB CAMBRIDGE MASS	
		MANNED SPACECRAFT CENTER HOUSTON, TEXAS	
		TRANSFORMER, AUDIO	
		SPECIFICATION CONTROL DRAWING	
		NASA APPROVAL <i>[Signature]</i> 7/17/63	CODE IDENT NO. SIZE C
		MIT APPROVAL <i>[Signature]</i> 7/17/63	NASA DRAWING NO. 1010291
		SCALE NONE	WT SHEET 2 OF 2

