

**GRUMMAN AIRCRAFT ENGINEERING CORPORATION
BETHPAGE, L. I., NEW YORK**

SECTION II

Translation Hand Controller

Sig. Ref.	Figure	
B1	11	+X Translation Command
B2	11	-X Translation Command
B3	11	+Y Translation Command
B4	11	-Y Translation Command
B5	11	+Z Translation Command
B6	11	-Z Translation Command

For B1 - B6:

Signal levels, source and load impedances and noise limits are specified with respect to the LGC Return (interface connector P/S 222 Pin G).

LGC isolation resistors are included in the source impedance.

Noise limits:

Switch Closed ("1") - Maximum noise amplitude is -50V if noise pulse does not exceed 0.5 millisecond width at maximum repetition rate of 50 pps.

Switch Open ("0") - Maximum noise amplitude is +50V if noise pulse does not exceed 1 millisecond width at maximum repetition rate of 50 pps.

Signals B1 - B6 will not be present in IM-1 or IM-2 due to the deletion of the T/TCA. The interface will be left open on the GARC side.

JUN 11 1970

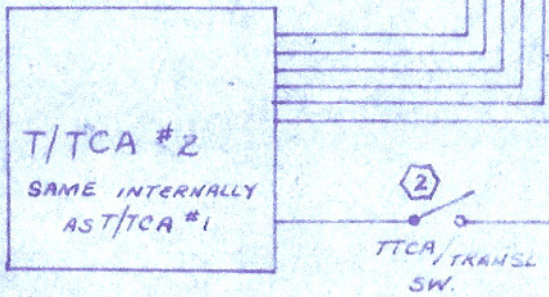
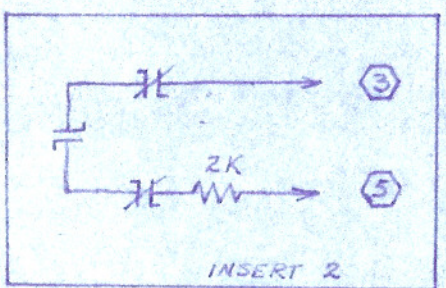
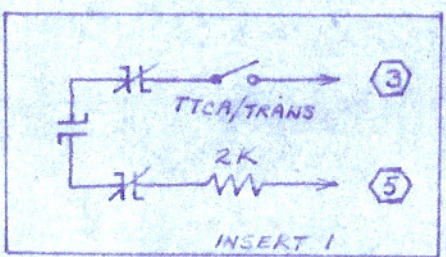
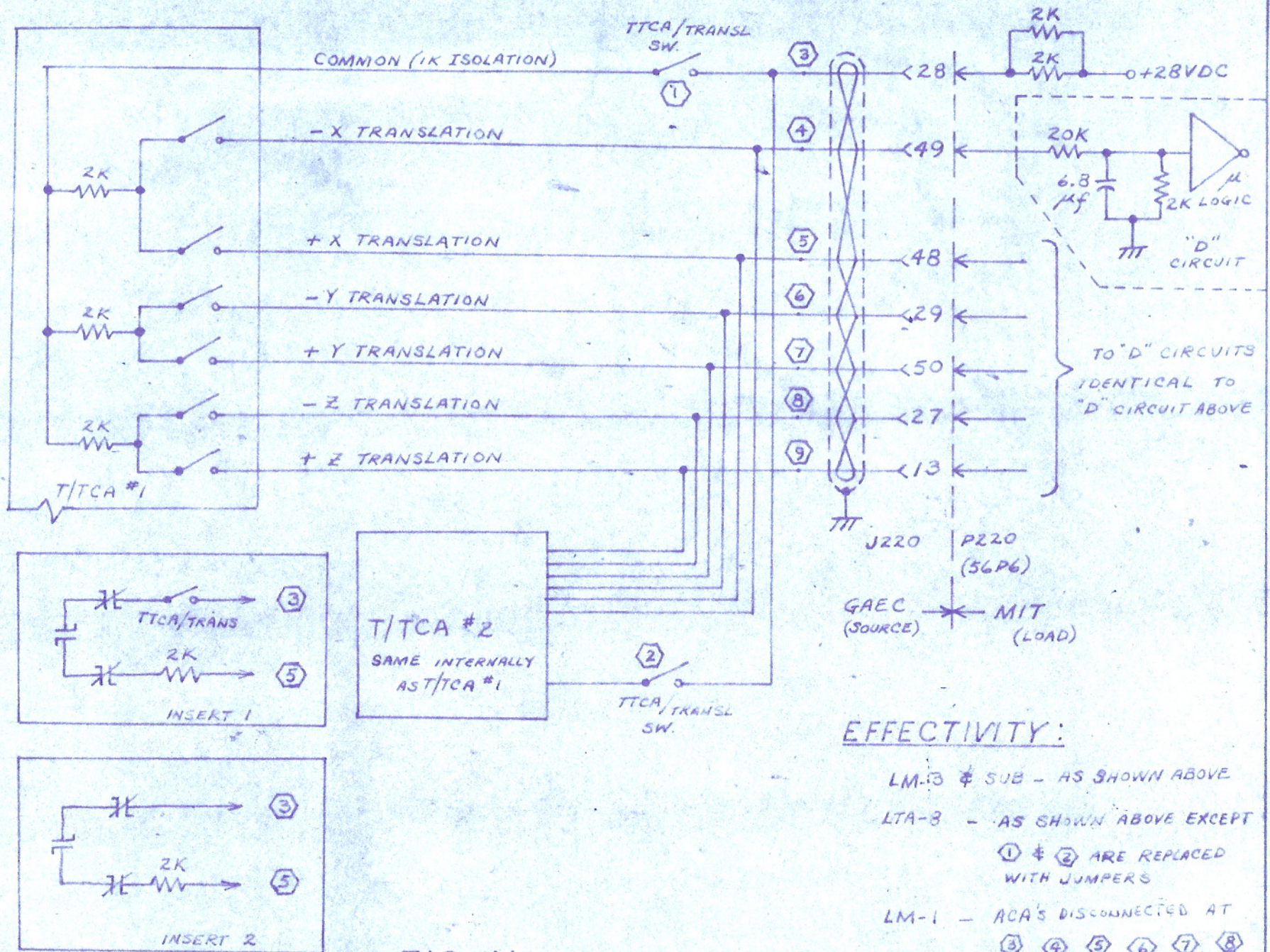
TDRR 38154

INTERFACE CONTROL DOCUMENT

SHEET 23 OF 114

ICD NO. LIS 370-10004

REV D



- EFFECTIVITY:**
- LM-3 & SUB - AS SHOWN ABOVE
 - LTA-8 - AS SHOWN ABOVE EXCEPT
① & ② ARE REPLACED
WITH JUMPERS
 - LM-1 - ACA'S DISCONNECTED AT
③, ④, ⑤, ⑥, ⑦, ⑧
& ⑨. INSERT 2 CONNECTED
AS SHOWN.
 - LM-2 - SAME AS LM-1 EXCEPT INSERT
1 USED INSTEAD OF INSERT 2.

EDRR 38154 JUN 11 1970 **FIG. 11**
TRANSLATION COMMANDS

ENG 37 2 1-44

ID	SIGNAL	SIGNAL LEVEL		Z SOURCE		Z LOAD		FUNCTIONAL DESCRIPTION
		DC VOLTS		OHMS ± 10%		OHMS ± 10%		
		"1"	"0"	"1"	"0"	"1"	"0"	
B1	+X Translation Command	28±11	0±2	3K	OPEN	22K	22K	The presence of a logic "1" at the interface is a request to the PGNCS to cause vehicle translation along the vehicle +X axis.
B2	-X Translation Command	28±11	0±2	3K	OPEN	22K	22K	The presence of a logic "1" at the interface is a request to the PGNCS to cause vehicle translation along the vehicle -X axis.
B3	+Y Translation Command	28±11	0±2	3K	OPEN	22K	22K	The presence of a logic "1" at the interface is a request to the PGNCS to cause vehicle translation along the vehicle +Y axis.
B4	-Y Translation Command	28±11	0±2	3K	OPEN	22K	22K	The presence of a logic "1" at the interface is a request to the PGNCS to cause vehicle translation along the vehicle -Y axis.
B5	+Z Translation Command	28±11	0±2	3K	OPEN	22K	22K	The presence of a logic "1" at the interface is a request to the PGNCS to cause vehicle translation along the vehicle +Z axis.
B6	-Z Translation Command	28±11	0±2	3K	OPEN	22K	22K	The presence of a logic "1" at the interface is a request to the PGNCS to cause vehicle translation along the vehicle -Z axis.

TDRR 38154 JUN 11 1970

INTERFACE CONTROL DOCUMENT

SHEET 25 OF 14

ICD NO. LIS 370-10004

REV D

ENG 37 1 14