

# Brevard Notes

BREVARD MUSIC CENTER ASSOCIATION  
Volunteers Supporting Young Musicians

VOLUME XXIII, Issue 2

Spring 2005

**Brevard Music Center**  
**PO Box 312**  
**Brevard, NC 28712**

**Phone: 862-2100**  
**Box office: 862-2105**  
**Toll free: 1-888-384-8682**  
**brevardmusic.org**

## *BMCA Board*

President: Janis Allen  
1st VP: Michel Robertson  
2nd VP: Debbie Klingender  
Secretary: Robert Sargent  
Past Pres.: Bill Robertson

## *Committee Chairpersons:*

BMW Raffle: Dave & Barbara Stackpole  
Celebrations: Debbie Klingender  
Celebrations Support: Phyllis Nesbitt  
Concessions: Marcia Millar  
Facilities: Dick Cushman  
Grounds Beautification: Ellie Vibert  
Newsletter: Ann Hoeke  
Prelude: Janie Sargent & Linda Candler  
Ushers: Ned Glover

## *Inside this issue:*

<b>New Personnel</b>	<b>1</b>
<b>Café con Brio</b>	<b>1</b>
<b>Behind the Scenes</b>	<b>2</b>
<b>Prelude</b>	<b>2</b>
<b>Praise for volunteers</b>	<b>3</b>
<b>President's Letter</b>	<b>3</b>
<b>Annual Crossword</b>	<b>4</b>
<b>A Look Back</b>	<b>5</b>
<b>Volunteer Opportunities</b>	<b>5</b>

## **New Personnel**

### *Changes to Improve Overall Organization*

Brevard Music Center recently announced structural and personnel changes to its administration. "It's always important for administrations to look at ways to improve efficiency and effectiveness," remarked President John Candler. "These organizational changes will help us internally and also improve our external communication with students, faculty audience, donors and the greater community."

The previously separate marketing and development departments are now headed by Director of Marketing and Development Gary Himes. Two additional positions, a development Director and Communications Officer, have been created to work with Himes and Marketing Associate Virginia Carter. George Alexsovich brings extensive performing arts experience to the field of development, while Emma Candelier will oversee BMC communications.

To more efficiently provide administrative services to all areas of the organization, Ann Wilkinson has been appointed Office Services Supervisor. Wilkinson recently en-

gaged Maria Giella to join Jennie Glesener as an Office Services Associate.

"Having worked with several prestigious performing arts and non-profit organizations, George brings extensive experience to BMC in fund-raising and other disciplines," commented Candler. Previous affiliations include the principal orchestras of Atlanta, Baltimore, Minnesota and Savannah.

George and his wife, Charlotte Petri, move to the area from Winston-Salem and have a son attending the University of North Carolina at Chapel-Hill.

Emma joins BMC after having served in public relations with the Minnesota and Philadelphia orchestras. She has also worked in artistic administration with the Grand Teton Music Festival in Jackson Hole (WY).

Emma holds a degree in cello performance from Rice University's Shepherd School of Music and recently moved to Brevard with her French husband, Pascal, and their two-year-old daughter.

A native of Puerto Rico, Maria Giella moved to Brevard a little more than ten years ago with her husband, Tony. She has spent most of her career in marketing and admissions within the health care industry. Other related work experience includes campus life services at New York University



Left to right: Maria Giella, George Alexsovich, Emma Candelier  
photo courtesy Phyllis Nesbitt

## **Summer dining** *Café Con*

Enjoy dinner at Brevard Music Center's Café con Brio, located adjacent to the main auditorium. The alfresco, covered café features culinary fare from Falls Landing Restaurant, with dinner served before Friday and Saturday concerts, opera performances and Variations concerts.



For reservations, call (828) 884-2835; menu and more information, visit [brevardmusic.org](http://brevardmusic.org).

## Behind the Scenes

### *Volunteers Beautify BMC Grounds*

Ellie Vibert took over the chairmanship of the Gardening/Beautification Committee when Walter Lacyk retired in 2003. Walter had been chair of that committee for nearly 15 years. Walter did a great job as a one-man committee, using plants donated by friends to establish the beds around the Administration Building.

Ellie enlisted the aid of Jane Carter. A long-time supporter of Brevard Music Center. Jane is a former landscaper so knows a lot about plants and what works best in certain locations. Jane's mother had gardened, but it never seemed fun to her until she and Dan had a home of their own. The Washington, D.C. area and Atlanta were both very satisfying places to try out new things and it became a passion that gave her exercise and emotional tranquility as well. She worked for friends and clients in her neighborhood for about ten years, and did about fifty properties during that time.

Ellie's interest in gardening began while growing up on a farm in Missouri. Her mother and grandmother had beautiful gardens of flowers and vegetables. Ellie says she knows a lot about digging and weeding but is very happy to be working with Jane who is helping her learn more

about plants.

Jane and Ellie came up with a plan to renovate some of the beds and replace some plantings that needed to go. Work began in early 2004. Thanks, in part, to the get acquainted gatherings held on behalf of BMCA several people were added to the committee.



**Volunteers from left: Penny Longhurst, Jane Carter, Ellie Vibert, Barb Liggett, Bob Liggett and Howard Shea**

Photo courtesy Phyllis Nesbitt

Walter Lacyk, Marcia Millar, Harry Sherrick, Barbara and Bob Leggett, David Grant, Howard Colby, Penny Longhurst, Janice Murray, Howard Shea and Ed Comer were

part of the initial workforce. Harry Sherrick died very suddenly last fall. He was a very willing worker and we will all miss him. Dick Senneff maintains the bed to the left of the entrance to Searcy Hall. It always looks beautiful. Check it out this summer.

Ellie says the most rewarding part of gardening is watching the new plantings grow and the positive comments from people who live and work in the area. The most challenging would be keeping weeds out of the beds! A close second would be watering all the pots and beds when Mother Nature doesn't do it for them.

Jane also enjoys comments from visitors during the summer, but also enjoys the children from Brevard Academy. On the whole, they are careful of the plants, and are always interested in what is going on when the gardeners are around.

Both Ellie and Jane say they have enjoyed the chance to get to know the staff and volunteers at BMC better and want to thank each one who has contributed their time and talent to this beautification effort.

Thanks to all the volunteers for beautifying the campus!

by Janis Allen

## Prelude

### *Prelude Committee Announces Theme*

The Brevard Music Center Association invites you to join them at the famous and mysterious Paris Opera House (a.k.a. Straus Auditorium) on Saturday evening June 4, 2005. "The Phantom" will appear during the "charming gala" while you enjoy "the music of the night."

Guests are invited to partake of their favorite beverage at one of the open bars. Enjoy a wonderful dinner prepared by The Womble Inn. Dance the night away to the music of the ever popular "Stormy Weather."

And, as the featured event of the evening, we will have our fabulous Silent Auction

where you will find the outstanding work of local and regional artisans, exotic travel packages, entertainment, fine dining, wine, jewelry and as always, that unexpected treasure you just must have!

Each year this major fund-raiser supports scholarships which attract students from throughout the United States and from over 10 foreign countries.

Prelude invitations will be mailed to all BMCA members on May 3. Tickets are \$100 per person. Those wishing to

become sponsors for the event receive tickets based on the various levels of sponsorship. Attire for the evening will be black tie optional, including Phantom and Christine look alikes.

Invitations will include a response card to be returned to BMC. Gather your friends and reserve early as Prelude usually sells out within the first two weeks of ticket sales.



## Praise for Volunteers

### *Facilities and Landscaping Volunteers Cauded*

This coming June, the Brevard Music Center welcomes to its campus over 400 students, 65 faculty and over 60 additional staff. To prepare the 148 buildings and over 140 acres of grounds, two groups of BMC volunteers continue to donate their invaluable services to the organization.

A group of six volunteers have been assisting Physical Plant Superintendent Frank McConnell with various projects around campus, including the installation of screen wire on the porch of a faculty residence and sprucing up one of the older student houses. They work both independently, as well as with BMC maintenance crew Barry Wil-

liams and Nathan Kawa.

Landscaping the extensive BMC acreage often falls to a group of volunteers who have spent hours pruning and installing shrubbery throughout the campus. The summer color that so graciously complements the various buildings and pathways falls primarily on the effort of these dedicated volunteers.

“The time donated toward the upkeep of our buildings and grounds is very much appreciated,” remarked Director of Operations and Finance Bill Boggs. “The work done in one year’s time by these two groups is equivalent to two and a half full-

time employees. We could never do what we do without their help.”

Brevard Music Center would like to thank the following people:

Facilities: Frank Babcock, Jim Boyd, Dick Cushman, Jay Eaton, Dave Grant, Dave Manning, Doug Nesbitt, Pete Peterman, Bob Schmitt

Landscaping: Jane Carter, Howard Colby, Walter Lacyk, Barbara & Bob Leggett, Penny Longhurst, Marcia Millar, Howard Shea, Ellie Vibert

by Emma Candelier

## President’s Letters

### *Developing Comprehensive Strategic Plan*

Dear BMCA Volunteer:

For the past several months, we have been hard at work developing a comprehensive strategic plan. Members of the planning committee include BMC trustees, BMCA leadership, management, faculty and community leaders. The Institute at Biltmore, a nationally acclaimed consulting firm, is working with us to gather information and to assure that there is objectivity in the process.

The plan is a draft at this writing, pending adoption by BMC’s Board. It is clear, however, that the final product will continue to focus our energy and our resources on our gifted young students. The following paragraphs bring our educational mission to life.

The Brevard Music Center is a community of student and professional musicians who aspire to ever-higher levels of artistry. Since all members of the community reside on the campus, learning occurs constantly and is manifest through intensive practice, rehearsal and a challenging concert schedule. A consistently high level of public performance is a hallmark of the Brevard Music Center.

The students, diverse in age and background, share the virtues of creativity, self-



**John Candler BMC President**

discipline, a sense of teamwork and a superior work ethic. All students work closely with faculty, and many have the opportunity to rehearse and perform alongside their mentors. A summer at the Brevard Music Center can be a transforming experience: seven weeks that change young lives.

The faculty, accomplished professional musicians, devote their entire summer to teaching and performing. They are joined by other professional artists and teachers who come to BMC to work for shorter periods, to inspire students through private teaching, master classes and performance.

The supporters – donors, volunteers and audience – are enriched by our students and faculty, imaginative programming and excellent performances. Brevard Music Center is committed to building enthusiasm for great music that enhances quality of life.

The campus is set on 140 wooded acres in the beautiful mountains of Western North Carolina. It engenders a sense of serenity and freedom from distraction while it promotes artistic achievement.

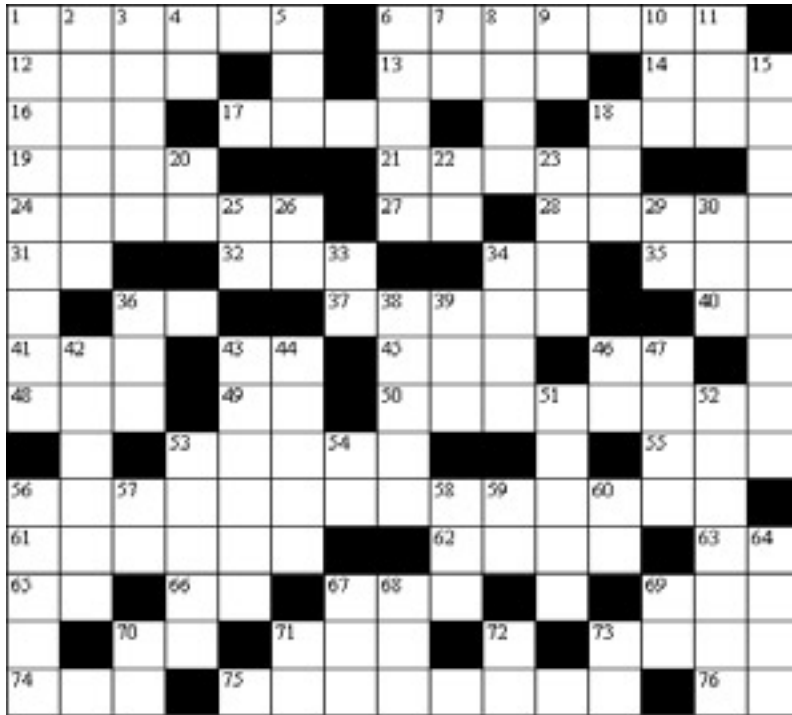
Goals, objectives and detailed implementation plans are being developed. Priorities will be set. Cost will be determined. Progress will be made.

It is now time for us to seek both broader recognition and support for the quality experiences that we provide for all of our constituencies. You are essential to our future aspirations. A dedicated army of creative people working together toward a common goal. Learning, laughing, participating in a winning effort, helping us to create community, inspire our students and enrich us all. I thank you once again for all that you do for us.



BMC President

## Annual Crossword

*CROSSWORD 2005 SEASON*

by Walter Lacyk

## ACROSS

1. 1. and 6. BMC's opening opera \_\_\_\_ of \_\_\_\_.
6. 1. and 6. BMC's opening opera \_\_\_\_ of \_\_\_\_.
12. Greek god of love.
13. Norsk god of thunder.
14. Hearing organ.
16. Historic time period.
17. Moffo or Karenina.
18. Dance poem by #21 across.
19. Sweeney \_\_\_\_.
21. The Sorcerer's Apprentice composer.
24. An aromatic herb.
27. In printing: half the width of EM.
28. A card game.
31. Greek prefix meaning egg.
32. He succeeded FDR.
34. \_\_ T sandwich.
35. Colorado or Colonel (abbrev.)
36. "\_\_\_\_, a drink with jam and bread."
37. The boot of Europe.
40. Verb meaning to exist.
41. Before.
43. Trembling often due to excess of alcohol (abbrev.).
45. In past time.
46. 2005 Orange Bowl winner.
48. Nancy's nickname, maybe?
49. Follows "Do(e), a deer, a female deer."
50. Brevard's guest from Boston.
53. To taunt.
55. Also.
56. Composer of 2004's Ariadne auf Naxos.
61. Jane \_\_\_\_ 1860-1935. Famed social worker.
62. To transport by truck.
63. Nazi shock troops (abbrev.).
65. Against (abbrev.).
66. Followed Old Style calendar (abbrev.).
67. A small island or key.
69. \_\_\_\_ de Janeiro.
70. All right.
71. Chum
73. \_\_\_\_ Fein.
74. A ball struck high in back of tennis opponent.
75. Gilbert and \_\_\_\_.
76. 3rd person singular of 'to be'.

## DOWN

1. His 5th opens with . . . \_.
2. Small steep-sided gulch found in southwestern U.S.
3. Highways.
4. Bachelor of science degree.
5. \_\_\_\_ Tin Tin.
6. Frederika von \_\_\_\_.
7. What a hard-of-hearing person might say.
8. German people.
9. Variant of in - before some words.
10. CSA general.
11. Same as 14 across.
15. Verdi opera (Aug. 6th).
18. 23rd letter of Greek alphabet.
20. \_\_ T in summer.
22. Organization of nations, HQ in NYC.
23. Did in a competent manner.
25. Expression of surprise.
26. An addition added to a letter (abbrev.).
29. Between VA and SC.
30. A sailor (slang).
33. Polynesian palm-like plant.
34. Coalition.
36. Roman numeral X.
38. Chaucer's, "Canterbury \_\_\_\_".
39. "Long \_\_\_\_ and Far Away."
42. Swift running area of a river.
43. Images presented to the mind while asleep.
44. Una furtiva lagrima (Engl. plural).
46. What to tell noisy neighbor at concert.
47. Andrew Lloyd Weber hit.
51. German cabbage.
52. Composer of this season's first opera.
53. To express gratitude.
54. Leftist parties of Europe (abbrev.).
56. Bolero composer.
57. It replaced your phonograph.
58. Your (archaic).
59. Egyptian sun god.
60. Product testing organization (abbrev.).
64. JCB + CPEB to JSB.
67. Silent \_\_\_\_, 30th U.S. President.
68. The whole quantity.
69. CT and MA neighbor.
70. Gulf and river in Asiatic Russia.
71. What one might say about a smell.
72. Nevada (abbrev.).
73. Chemical term for tin.

**A Look Back**

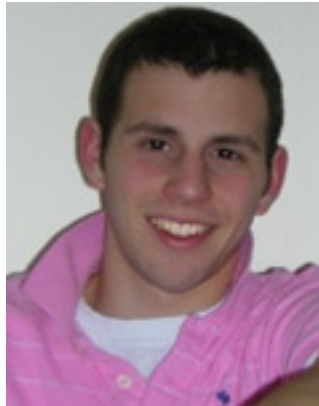
*A Student Perspective*

Alexander Thomas attended Brevard Music Center in 2004. A senior at Poughkeepsie Day School in New York, he studies piano with Sylvia Bucelli. The below article was extracted from an essay Thomas submitted as part of his college applications.

**Immersion.** Could I submerge myself in seven weeks of intense study? I wondered whether at the end of the summer I would feel enlivened or burned out. As part of a living and breathing community of musicians who shared a common passion, I found a personal retreat. I was surrounded by music all day, every day, and the energy at Brevard Music Center carried and motivated me to new heights. Perhaps more significant than the pieces I practiced or the classes I attended was what I learned about myself. I discovered I have a musical mind, and I enjoyed learning music theory and musicology.

**Kindred Spirits.** The experience of having a specialized passion like music can make one feel lonely at times. I play soccer and skateboard with friends, but my “musi-

cal heart” isn’t understood by my friends at home. At Brevard Music Center, I wasn’t alone. Everyone had their own musical idiosyncrasies, but we shared the same interests.



Alexander Thomas

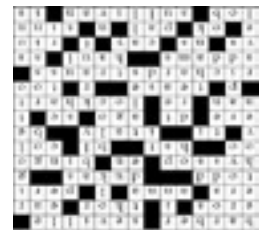
We sat at lunch laughing together, kindred spirits united in the joy of music. It felt like coming home.

**Weeks with Chopin.** Music came alive for me in a weekly class on Chopin. We reviewed all of Chopin’s preludes and etudes, analyzing and discovering the depth to

each one. It was much like an English class back home, dissecting an author’s passage. Chopin creates anticipation, and his music reflects a spectrum of feeling. I saw music as a journey, an experience of shared emotion, as an art form and a language.

**My Private Teacher.** I came to Brevard with my mind set on learning a particular piece, but my private teacher had other things in mind. She taught me much about life in those seven weeks. I learned to trust the wisdom of my teacher and be patient with my own learning. I gained respect for the study of music as a discipline, as well as an art. I remember at the end of the summer she told me, “If a heart beats music, it can’t be denied.” Those were the most meaningful words I heard all summer.

**Crossword solution**



**Volunteer Opportunities**

*Classified – Help Wanted*

**HARMONY HOUSE**

If you would like to work with an active and enthusiastic group of volunteers, help BMC concert-goers find just the right gift item to take home, and participate in the general hustle and bustle of retail sales, Harmony House Gift Shop is looking for you! Working behind the counter is lots of fun and you’ll have the opportunity to make new friends while supporting BMC’s scholarship program. If you’d like to know more about volunteering at Harmony House call or e-mail Michel Robertson (884-3475 or acctbs@citcom.net).

manager, who will train you this summer: 884-3475 or acctbs@citcom.net

**Wanted:** Coordinator of new website page to sell Harmony House’s gift items. No web design experience needed; just the ability to photograph products, get photos to webmaster, pick up website orders, and refer orders to shipping committee. You can brag to your friends that you’re “the web person.”

Contact Michel Robertson: 884-3475 or acctbs@citcom.net

**VOLUNTEER EMPLOYMENT**

(No benefits, no salary, so no taxes!)

**Wanted:** Shopaholic – to purchase and manage the selling of gift items for Harmony House, the summer retail store of the Music Center.

Contact Michel Robertson, the current



*Invitation*

**Opera Club Free Program**

Verdi’s *Rigoletto*, which will be performed this summer, will be discussed Tuesday, April 12, 1:30 at the French Quarter Building on the Music Center campus. Includes video, discussion of the opera, and refreshments at intermission.

Please call Martha D’Agata at 884-5180 for more information.



Mailing committee at work