

CAMP CROWDER



A CAMERA TRIP THROUGH CAMP CROWDER, MISSOURI

CAMP CROWDER DIRECTORY

←
SECOND ARMY TROOPS
TACTICAL UNITS

SERVICE CLUB No 2

CENTRAL SIGNAL CORPS TRAINING CENTER

SIGNAL CORPS SCHOOL
SIGNAL CORPS UNIT TRAINING CENTER

→
SIGNAL CORPS REPLACEMENT
TRAINING CENTER

SERVICE CLUB No 1

SERVICE CLUB No 3

PROVOST MARSHAL

AIR CADET BOARD

From the four corners of the nation, America's finest manhood flows into Camp Crowder, Missouri, the home of the Central Signal Corps Training Center, the largest Signal Corps training center in the entire world.

The camp, located on the edge of the picturesque Ozark mountain region, is named for General Enoch Herbert Crowder, a native Missourian, who authored the Selective Service Act of the first World War and who, as Provost Marshal General, was responsible for its successful administration.

At this training center the soldiers receive complete and comprehensive courses in all phases of communications work, learning how to "Get the Message Through" under every possible condition which might arise in today's all-out global warfare. Here they are taught to operate and maintain those communication mediums—telephone, radio, telegraph and their related fields—that knit our far-flung armies into one coordinated unit.

Ground was broken at Camp Crowder on August 30, 1941, on what was then rolling farm land, dotted with small orchards, corn fields and modest farm homes. The first troops moved in December 2, just five days before Pearl Harbor. With the declaration of war, the camp's construction program was put into high speed and the serious business of training soldiers in even greater numbers got immediately under way.

Today, the post encompasses nearly 50,000 acres and is a city of thousands of buildings. Every possible Signal Corps training facility is at hand, and virtually every convenience is available in camp for the men during their spare-time hours.

These include numerous post-exchanges which purvey hundreds of personal articles soldiers may need or desire; three Service Clubs, where entertainment is provided every evening; three Guest Houses, which are operated as hotels for soldiers' guests; five theaters, presenting first-run movies every evening; many chapels, where every soldier may worship according to his own faith; a huge fieldhouse, with facilities for every type of indoor athletics; scores of recreation halls and dayrooms; a modern hospital; post office; radio broadcasting studio, from which soldier-talent shows are aired daily; bakery; laundry. A camp newspaper, "The Camp Crowder Message," is published weekly. Regular bus service around camp and to surrounding communities is available, as well as train service directly from camp.

Camp Crowder is situated five miles south of Neosho, a thriving community with a pre-war population of 5,000. Larger communities—Joplin, 40,000 population, and Carthage, 12,000—lie some 20 miles farther and may be reached by hourly bus service. The region around Camp Crowder is one famed for its folk-lore and its recreational facilities.





Switchboard Operation

Shop Work





Class Lecture

Telephone and Switchboard Operation





Pole Climbing ✓



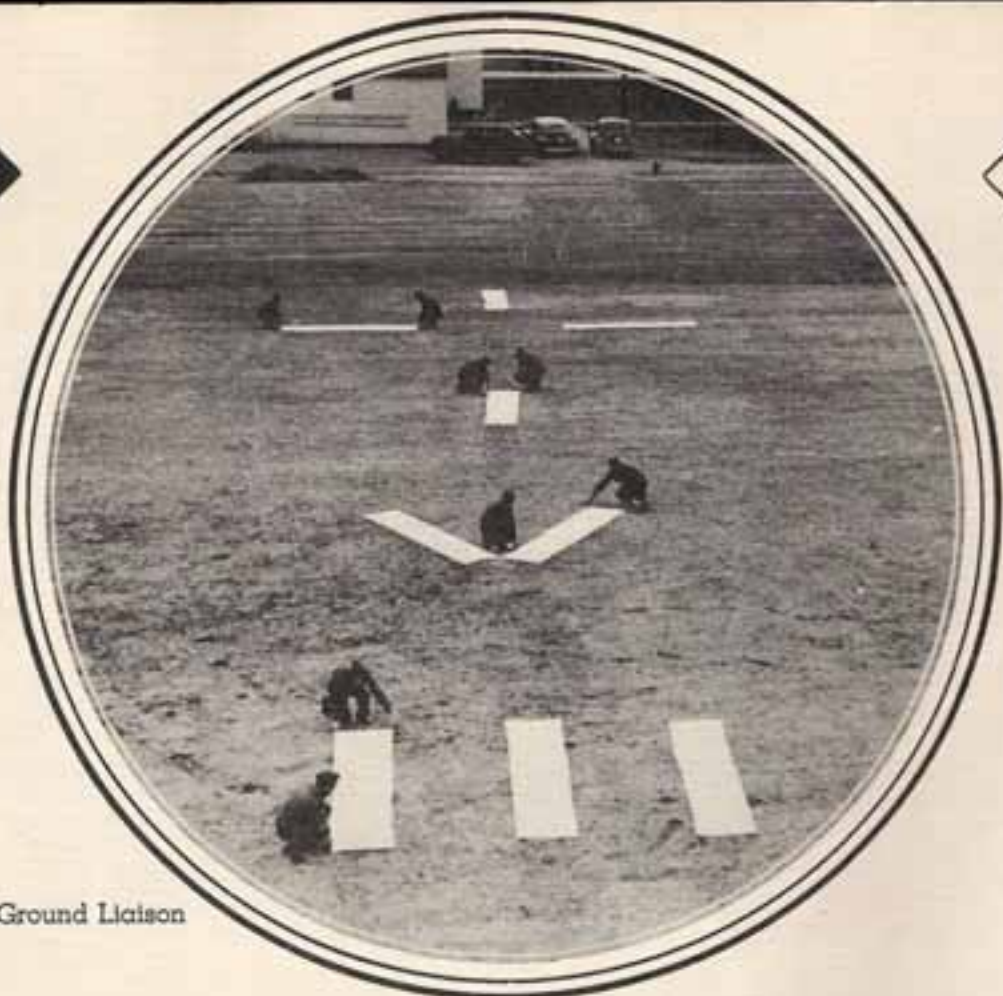
Field Telephone and Terminal Strip





Learning Principles of Electricity





Maintaining Air-Ground Liaison

Radio Car





LAYING WIRE





FIELD RADIO



Motor Maintenance



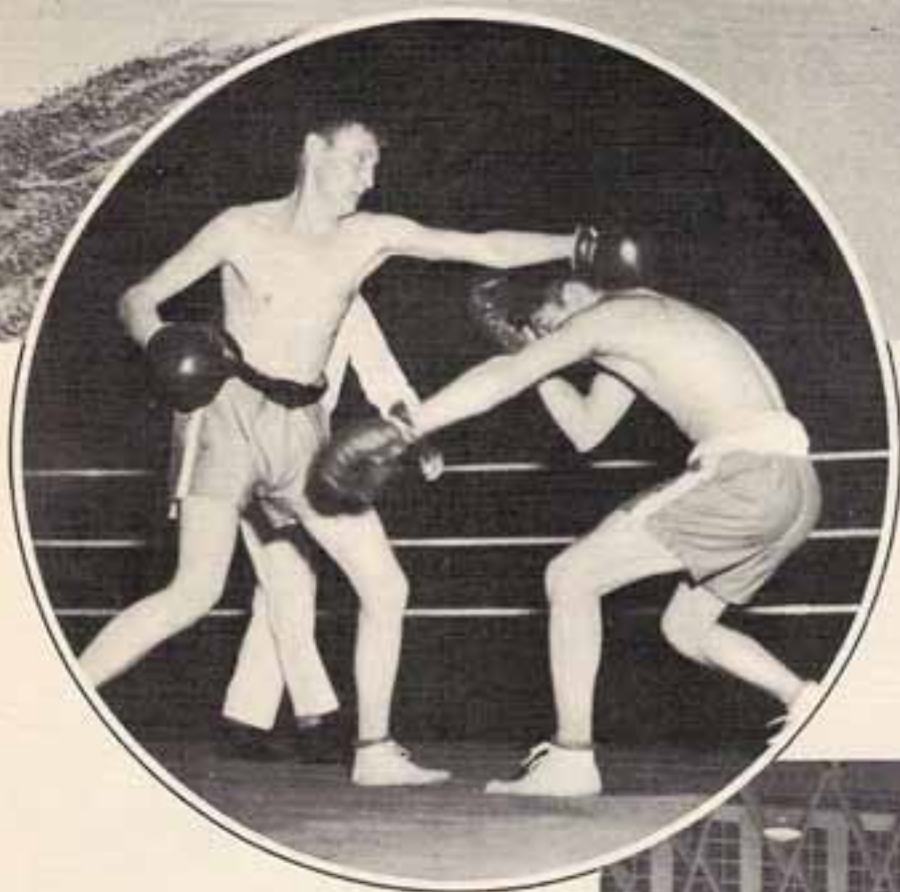
Fleet of Radio Cars





Running the Obstacle Course





A T H L E





T I C S ★





Post Office Interior



Mail Call ✓



Typical Barracks Street



Preparing for Inspection



"GO AHEAD, TAKE
YOUR UNDERSHIRT
OFF, IT'S PLENTY HOT!"

"DON'T BOTHER GETTIN'
UP! JUST LET US
KNOW WHEN TO CALL YOU!"

1ST
SGT.

"KNOCK OFF, KID!
I'LL FINISH
THOSE SPUDS!"

"HERE'S YOUR FURLOUGH!
SORRY, WE CAN ONLY GIVE
YOU 90 DAYS!"

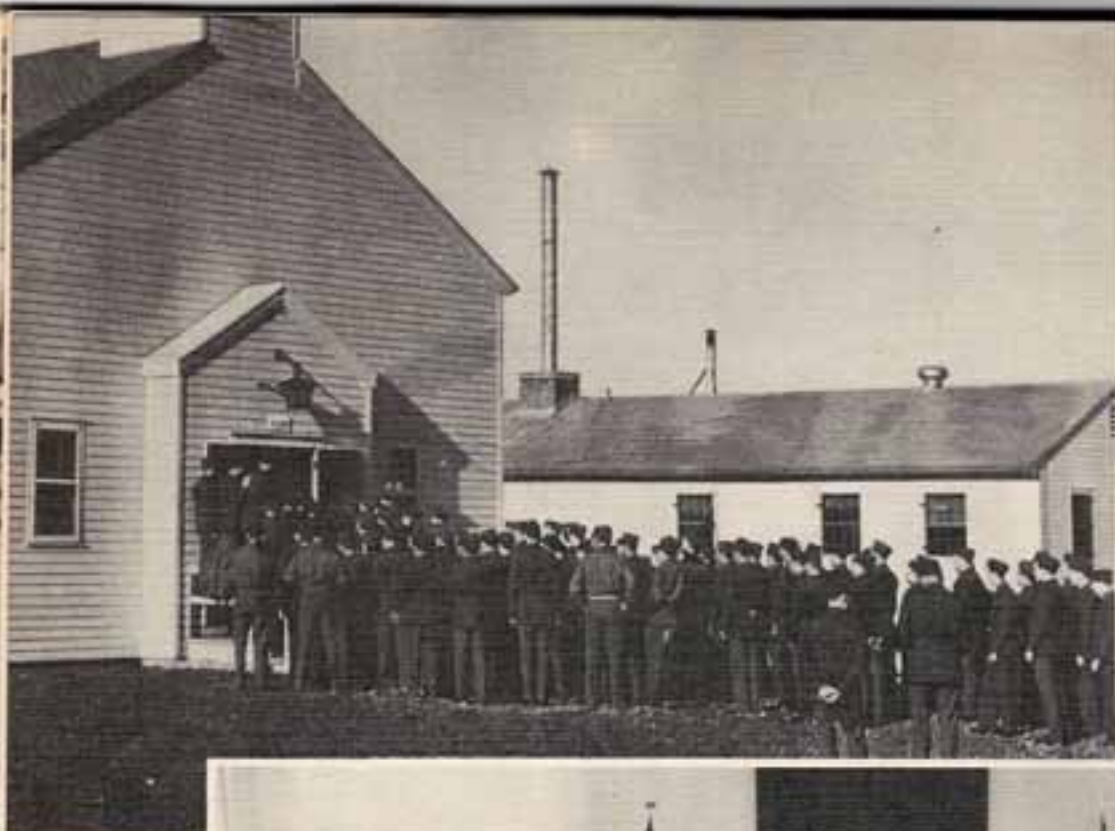
PVT.
JOE
BLOW

BARR

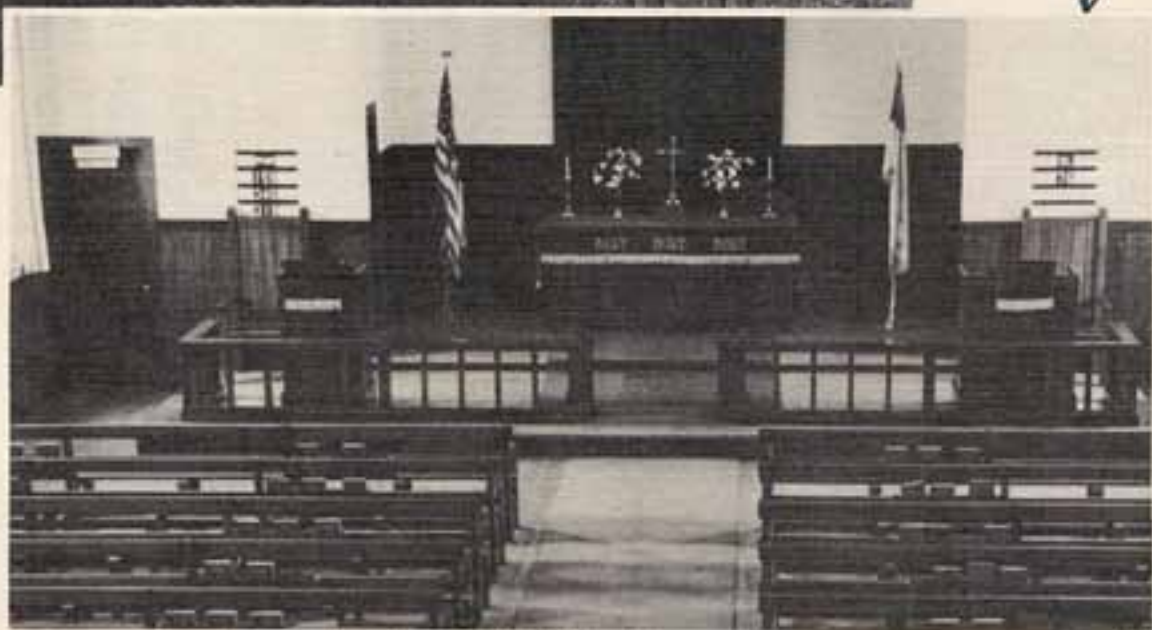
CAMP CROWDER, MO.

"FENCE DETAIL" THOUGHTS





Chapel ✓



Chapel Service





Post-Exchange ↖





Post Fire Department





Gas Practice ↙





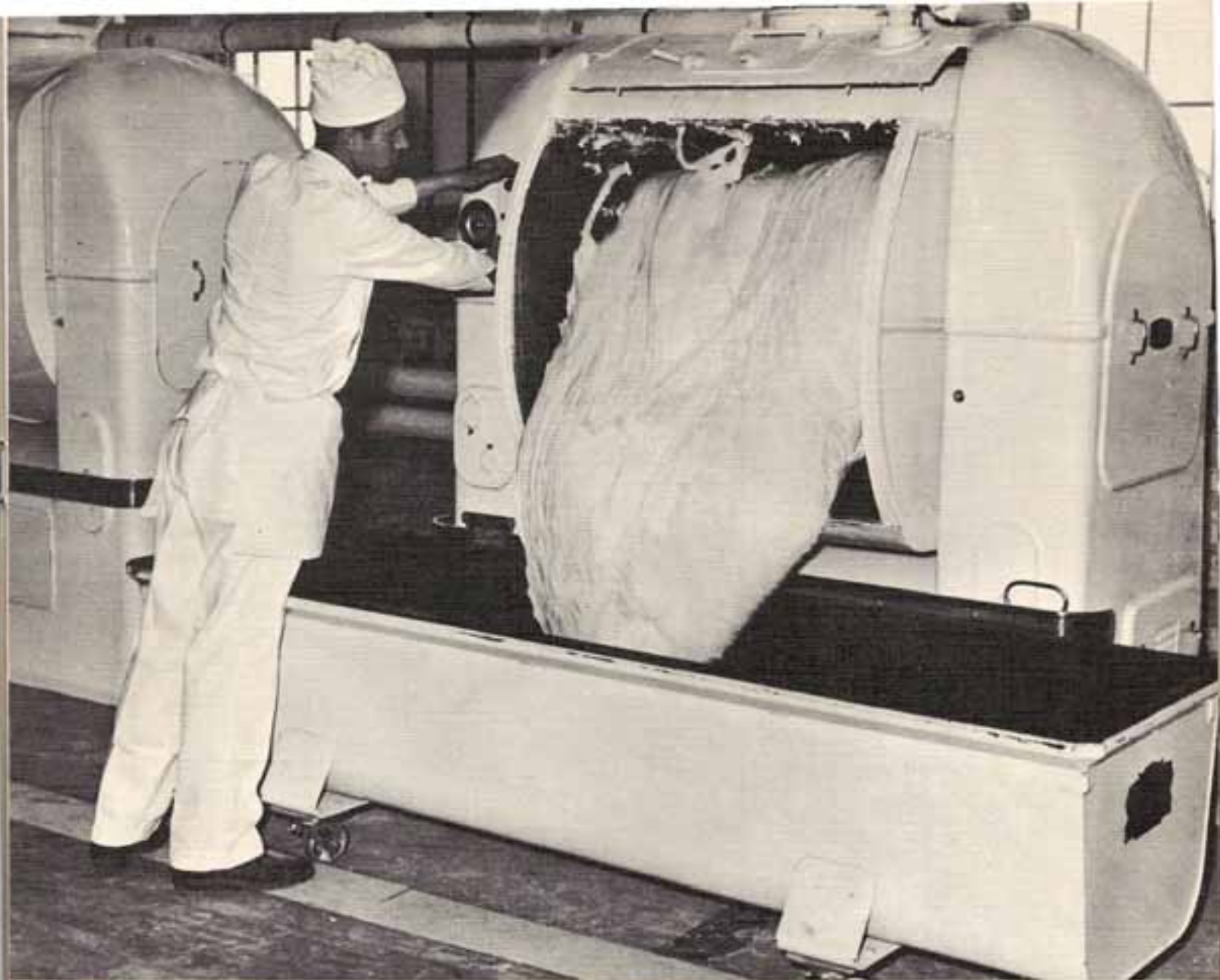
Hospital Scenes



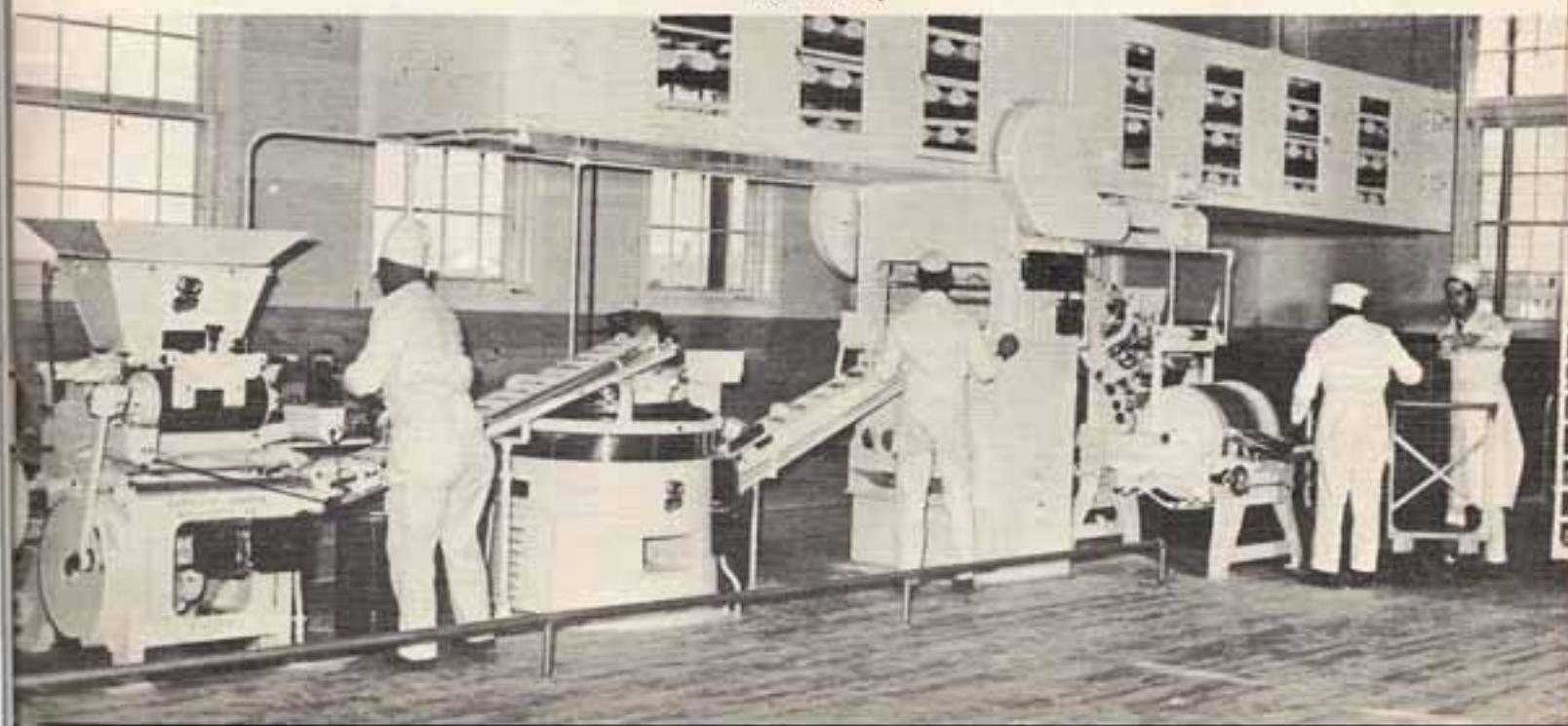


The Old and the New





Post Bakery





Typical Post Theater



Benny Goodman Entertains at Camp





Officers' Mess



Guest House ✓



Guest House Lobby



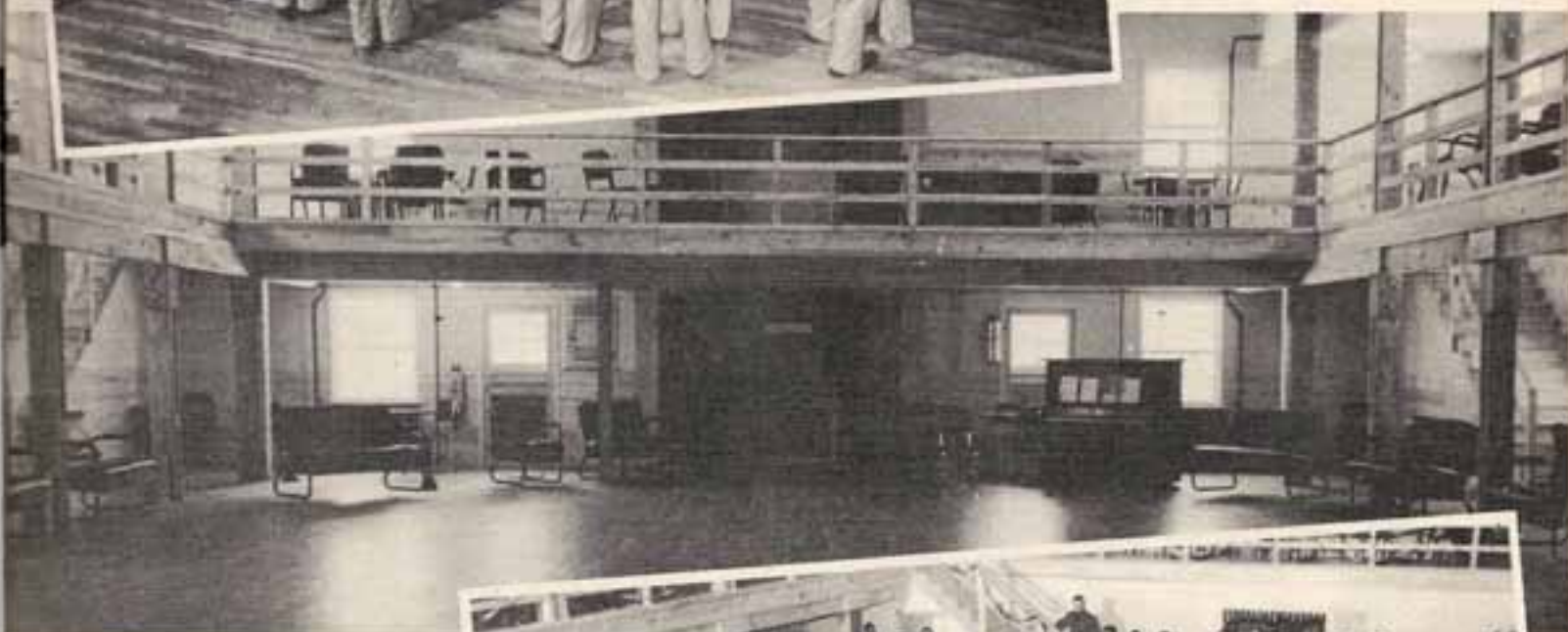
Enlisted Men's Service Club ✓



Service Club Cafeteria



Community Sing



Interior Service Club ←



Service Club Dance



R I F L E



R A N G E





Troops passing in Review



Warehouse Area



Troops Arriving

Convoy



Going to town ✓