

## Series and parallel AC circuits

This worksheet and all related files are licensed under the Creative Commons Attribution License, version 1.0. To view a copy of this license, visit <http://creativecommons.org/licenses/by/1.0/>, or send a letter to Creative Commons, 559 Nathan Abbott Way, Stanford, California 94305, USA. The terms and conditions of this license allow for free copying, distribution, and/or modification of all licensed works by the general public.

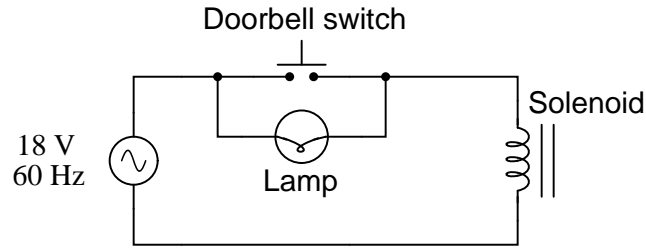
---

Resources and methods for learning about these subjects (list a few here, in preparation for your research):

---

Question 1

Doorbell circuits connect a small lamp in parallel with the doorbell pushbutton so that there is light at the button when it is *not* being pressed. The lamp's filament resistance is such that there is not enough current going through it to energize the solenoid coil when lit, which means the doorbell will ring only when the pushbutton switch shorts past the lamp:



Suppose that such a doorbell circuit suddenly stops working one day, and the home owner assumes the power source has quit since the bell will not ring when the button is pressed and the lamp never lights. Although a dead power source is certainly possible, it is not the only possibility. Identify another possible failure in this circuit which would result in no doorbell action (no sound) and no light at the lamp.

[file 03447](#)

---

Answer 1

- Solenoid coil failed open
- Wire broken anywhere in circuit

---

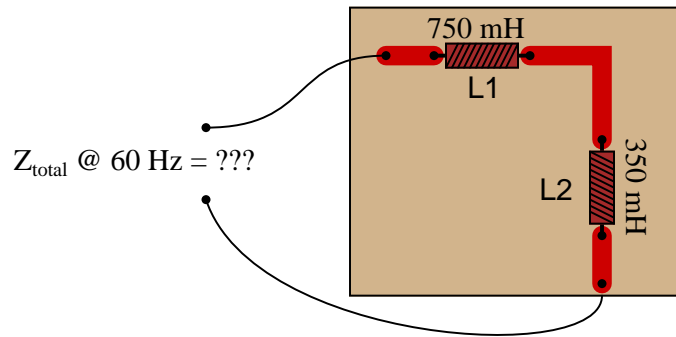
Notes 1

After discussing alternative possibilities with your students, shift the discussion to one on how *likely* any of these failures are. For instance, how likely is it that the solenoid coil has developed an "open" fault compared to the likelihood of a regular wire connection going bad in the circuit? How do either of these possibilities compare with the likelihood of the source failing as a result of a tripped circuit breaker or other power outage?

---

Question 2

Calculate the total impedance offered by these two inductors to a sinusoidal signal with a frequency of 60 Hz:



Show your work using two different problem-solving strategies:

- Calculating total inductance ( $L_{total}$ ) first, then total impedance ( $Z_{total}$ ).
- Calculating individual impedances first ( $Z_{L1}$  and  $Z_{L2}$ ), then total impedance ( $Z_{total}$ ).

Do these two strategies yield the same total impedance value? Why or why not?

[file 01832](#)

---

Answer 2

**First strategy:**

$$L_{total} = 1.1 \text{ H}$$

$$X_{total} = 414.7 \Omega$$

$$\mathbf{Z}_{total} = 414.7 \Omega \angle 90^\circ \text{ or } \mathbf{Z}_{total} = 0 + j414.7 \Omega$$

**Second strategy:**

$$X_{L1} = 282.7 \Omega \quad \mathbf{Z}_{L1} = 282.7 \Omega \angle 90^\circ$$

$$X_{L2} = 131.9 \Omega \quad \mathbf{Z}_{L2} = 131.9 \Omega \angle 90^\circ$$

$$\mathbf{Z}_{total} = 414.7 \Omega \angle 90^\circ \text{ or } \mathbf{Z}_{total} = 0 + j414.7 \Omega$$

Follow-up question: draw a phasor diagram showing how the two inductors' impedance phasors geometrically add to equal the total impedance.

---

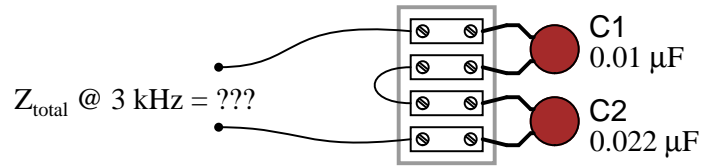
Notes 2

The purpose of this question is to get students to realize that *any* way they can calculate total impedance is correct, whether calculating total inductance and then calculating impedance from that, or by calculating the impedance of each inductor and then combining impedances to find a total impedance. This should be reassuring, because it means students have a way to check their work when analyzing circuits such as this!

---

### Question 3

Calculate the total impedance offered by these two capacitors to a sinusoidal signal with a frequency of 3 kHz:



Show your work using two different problem-solving strategies:

- Calculating total capacitance ( $C_{total}$ ) first, then total impedance ( $Z_{total}$ ).
- Calculating individual impedances first ( $Z_{C1}$  and  $Z_{C2}$ ), then total impedance ( $Z_{total}$ ).

Do these two strategies yield the same total impedance value? Why or why not?

[file 01834](#)

---

### Answer 3

#### First strategy:

$$C_{total} = 6.875 \text{ nF}$$

$$X_{total} = 7.717 \text{ k}\Omega$$

$$\mathbf{Z}_{total} = 7.717 \text{ k}\Omega \angle -90^\circ \text{ or } \mathbf{Z}_{total} = 0 - j7.717 \text{ k}\Omega$$

#### Second strategy:

$$X_{C1} = 5.305 \text{ k}\Omega \quad \mathbf{Z}_{C1} = 5.305 \text{ k}\Omega \angle -90^\circ$$

$$X_{C2} = 2.411 \text{ k}\Omega \quad \mathbf{Z}_{C2} = 2.411 \text{ k}\Omega \angle -90^\circ$$

$$\mathbf{Z}_{total} = 7.717 \text{ k}\Omega \angle -90^\circ \text{ or } \mathbf{Z}_{total} = 0 - j7.717 \text{ k}\Omega$$

---

### Notes 3

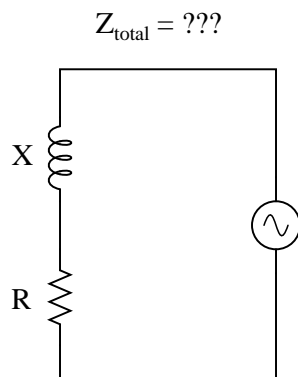
A common misconception many students have about capacitive reactances and impedances is that they must interact "oppositely" to how one would normally consider electrical opposition. That is, many students believe capacitive reactances and impedances should add in parallel and diminish in series, because that's what capacitance (in Farads) does! This is not true, however. Impedances *always* add in series and diminish in parallel, at least from the perspective of complex numbers. This is one of the reasons I favor AC circuit calculations using complex numbers: because then students may conceptually treat impedance just like they treat DC resistance.

The purpose of this question is to get students to realize that *any* way they can calculate total impedance is correct, whether calculating total capacitance and then calculating impedance from that, or by calculating the impedance of each capacitor and then combining impedances to find a total impedance. This should be reassuring, because it means students have a way to check their work when analyzing circuits such as this!

---

Question 4

Write an equation that solves for the impedance of this series circuit. The equation need not solve for the phase angle between voltage and current, but merely provide a scalar figure for impedance (in ohms):



file 00850

---

Answer 4

$$Z_{\text{total}} = \sqrt{R^2 + X^2}$$

Follow-up question: algebraically manipulate this equation to produce two more; one solving for  $R$  and the other solving for  $X$ .

---

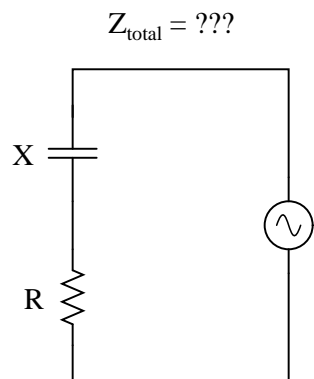
Notes 4

Ask your students if this equation looks similar to any other mathematical equations they've seen before. If not, square both sides of the equation so it looks like  $Z^2 = R^2 + X^2$  and ask them again.

---

Question 5

Write an equation that solves for the impedance of this series circuit. The equation need not solve for the phase angle between voltage and current, but merely provide a scalar figure for impedance (in ohms):



file 01844

---

Answer 5

$$Z_{\text{total}} = \sqrt{R^2 + X^2}$$

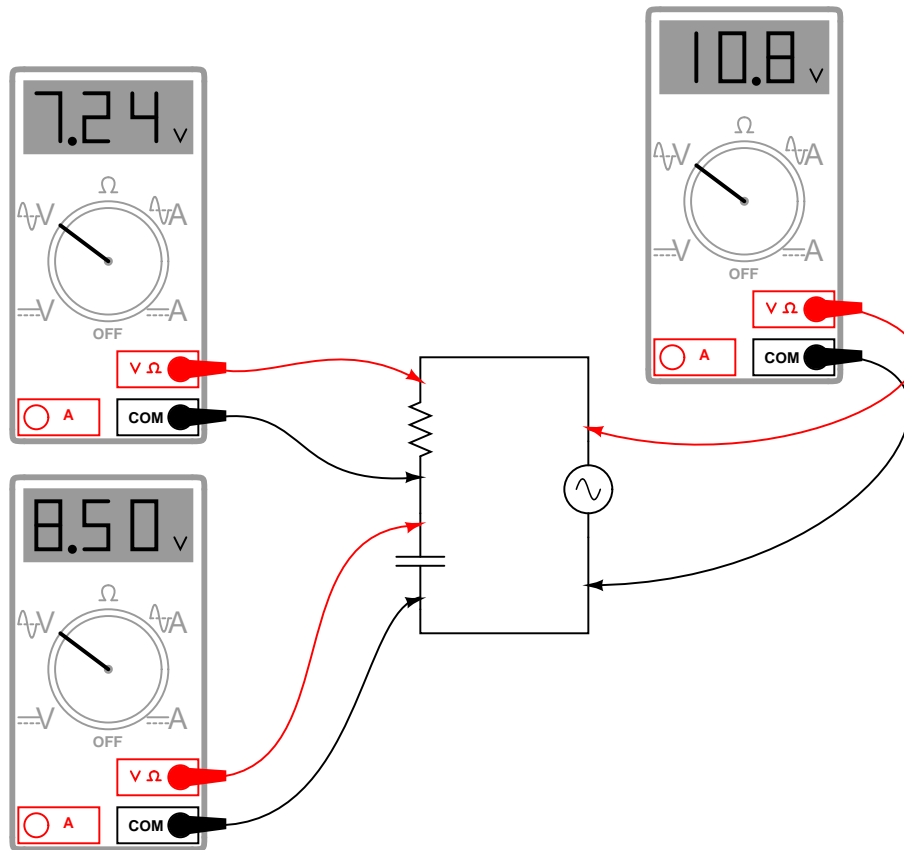
---

Notes 5

Ask your students if this equation looks similar to any other mathematical equations they've seen before. If not, square both sides of the equation so it looks like  $Z^2 = R^2 + X^2$  and ask them again.

### Question 6

A student measures voltage drops in an AC circuit using three voltmeters and arrives at the following measurements:



Upon viewing these measurements, the student becomes very perplexed. Aren't voltage drops supposed to *add* in series, just as in DC circuits? Why, then, is the total voltage in this circuit only 10.8 volts and not 15.74 volts? How is it possible for the total voltage in an AC circuit to be substantially less than the simple sum of the components' voltage drops?

Another student, trying to be helpful, suggests that the answer to this question might have something to do with RMS versus peak measurements. A third student disagrees, proposing instead that at least one of the meters is badly out of calibration and thus not reading correctly.

When you are asked for your thoughts on this problem, you realize that neither of the answers proposed thus far are correct. Explain the real reason for the "discrepancy" in voltage measurements, and also explain how you could experimentally disprove the other answers (RMS vs. peak, and bad calibration).

[file 01566](#)

---

## Answer 6

AC voltages still add in series, but *phase* must also be accounted for when doing so. Unfortunately, multimeters provide no indication of phase whatsoever, and thus do not provide us with all the information we need. (Note: just by looking at this circuit's components, though, you should still be able to calculate the correct result for total voltage and validate the measurements.)

I'll let you determine how to disprove the two incorrect explanations offered by the other students!

Challenge question: calculate a set of possible values for the capacitor and resistor that would generate these same voltage drops in a real circuit. Hint: you must also decide on a value of frequency for the power source.

---

## Notes 6

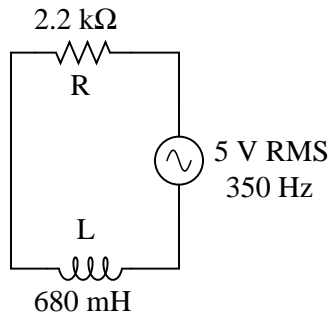
This question has two different layers: first, how to reconcile the "strange" voltage readings with Kirchhoff's Voltage Law; and second, how to experimentally validate the accuracy of the voltmeters and the fact that they are all registering the same type of voltage (RMS, peak, or otherwise, it doesn't matter). The first layer of this question regards the basic concepts of AC phase, while the second exercises troubleshooting and critical thinking skills. Be sure to discuss both of these topics in class with your students.



---

Question 7

Draw a phasor diagram showing the trigonometric relationship between resistance, reactance, and impedance in this series circuit:

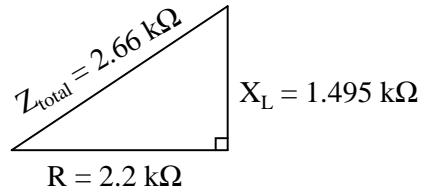


Show mathematically how the resistance and reactance combine in series to produce a total impedance (scalar quantities, all). Then, show how to analyze this same circuit using complex numbers: regarding component as having its own impedance, demonstrating mathematically how these impedances add up to comprise the total impedance (in both polar and rectangular forms).

[file 01827](#)

---

Answer 7



**Scalar calculations**

$$R = 2.2 \text{ k}\Omega \quad X_L = 1.495 \text{ k}\Omega$$
$$Z_{series} = \sqrt{R^2 + X_L^2}$$
$$Z_{series} = \sqrt{2200^2 + 1495^2} = 2660 \text{ }\Omega$$

**Complex number calculations**

$$\mathbf{Z}_R = 2.2 \text{ k}\Omega \angle 0^\circ \quad \mathbf{Z}_L = 1.495 \text{ k}\Omega \angle 90^\circ \quad (\text{Polar form})$$
$$\mathbf{Z}_R = 2.2 \text{ k}\Omega + j0 \text{ }\Omega \quad \mathbf{Z}_L = 0 \text{ }\Omega + j1.495 \text{ k}\Omega \quad (\text{Rectangular form})$$
$$\mathbf{Z}_{series} = \mathbf{Z}_1 + \mathbf{Z}_2 + \dots + \mathbf{Z}_n \quad (\text{General rule of series impedances})$$
$$\mathbf{Z}_{series} = \mathbf{Z}_R + \mathbf{Z}_L \quad (\text{Specific application to this circuit})$$
$$\mathbf{Z}_{series} = 2.2 \text{ k}\Omega \angle 0^\circ + 1.495 \text{ k}\Omega \angle 90^\circ = 2.66 \text{ k}\Omega \angle 34.2^\circ$$
$$\mathbf{Z}_{series} = (2.2 \text{ k}\Omega + j0 \text{ }\Omega) + (0 \text{ }\Omega + j1.495 \text{ k}\Omega) = 2.2 \text{ k}\Omega + j1.495 \text{ k}\Omega$$

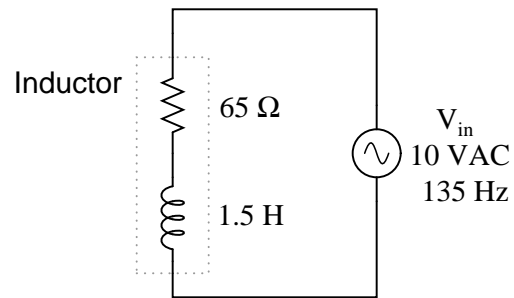
I want students to see that there are two different ways of approaching a problem such as this: with *scalar* math and with *complex number* math. If students have access to calculators that can do complex-number arithmetic, the "complex" approach is actually simpler for series-parallel combination circuits, and it yields richer (more informative) results.

Ask your students to determine which of the approaches most resembles DC circuit calculations. Incidentally, this is why I tend to prefer complex-number AC circuit calculations over scalar calculations: because of the conceptual continuity between AC and DC. When you use complex numbers to represent AC voltages, currents, and impedances, almost all the rules of DC circuits still apply. The big exception, of course, is calculations involving *power*.

---

Question 8

Calculate the magnitude and phase shift of the current through this inductor, taking into consideration its intrinsic winding resistance:



file 00639

---

Answer 8

$$\mathbf{I} = 7.849 \text{ mA} \angle -87.08^\circ$$

---

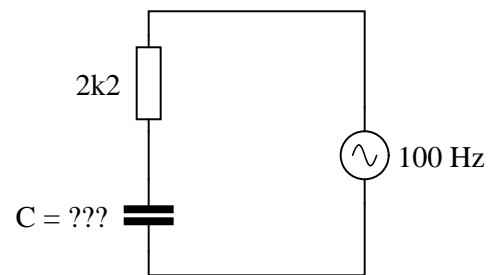
Notes 8

Inductors are the least "pure" of any reactive component, due to significant quantities of resistance in the windings. Discuss this fact with your students, and what it means with reference to choosing inductors versus capacitors in circuit designs that could use either.

---

Question 9

Calculate the necessary size of the capacitor to give this circuit a total impedance ( $Z_{total}$ ) of  $4\text{ k}\Omega$ , at a power supply frequency of  $100\text{ Hz}$ :



file 04042

---

Answer 9

$$C = 0.476\ \mu\text{F}$$

---

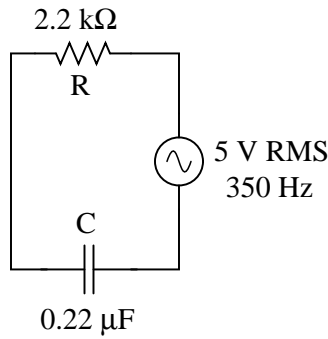
Notes 9

Nothing special to note here, just practice with the impedance triangle (and the capacitive reactance formula).

---

Question 10

Draw a phasor diagram showing the trigonometric relationship between resistance, reactance, and impedance in this series circuit:

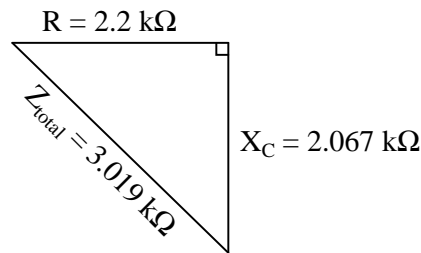


Show mathematically how the resistance and reactance combine in series to produce a total impedance (scalar quantities, all). Then, show how to analyze this same circuit using complex numbers: regarding each of the component as having its own impedance, demonstrating mathematically how these impedances add up to comprise the total impedance (in both polar and rectangular forms).

[file 01828](#)

---

Answer 10



**Scalar calculations**

$$R = 2.2 \text{ k}\Omega \quad X_C = 2.067 \text{ k}\Omega$$
$$Z_{\text{series}} = \sqrt{R^2 + X_C^2}$$
$$Z_{\text{series}} = \sqrt{2200^2 + 2067^2} = 3019 \text{ }\Omega$$

**Complex number calculations**

$$\mathbf{Z}_R = 2.2 \text{ k}\Omega \angle 0^\circ \quad \mathbf{Z}_C = 2.067 \text{ k}\Omega \angle -90^\circ \quad (\text{Polar form})$$
$$\mathbf{Z}_R = 2.2 \text{ k}\Omega + j0 \text{ }\Omega \quad \mathbf{Z}_C = 0 \text{ }\Omega - j2.067 \text{ k}\Omega \quad (\text{Rectangular form})$$
$$\mathbf{Z}_{\text{series}} = \mathbf{Z}_1 + \mathbf{Z}_2 + \dots + \mathbf{Z}_n \quad (\text{General rule of series impedances})$$
$$\mathbf{Z}_{\text{series}} = \mathbf{Z}_R + \mathbf{Z}_C \quad (\text{Specific application to this circuit})$$
$$\mathbf{Z}_{\text{series}} = 2.2 \text{ k}\Omega \angle 0^\circ + 2.067 \text{ k}\Omega \angle -90^\circ = 3.019 \text{ k}\Omega \angle -43.2^\circ$$
$$\mathbf{Z}_{\text{series}} = (2.2 \text{ k}\Omega + j0 \text{ }\Omega) + (0 \text{ }\Omega - j2.067 \text{ k}\Omega) = 2.2 \text{ k}\Omega - j2.067 \text{ k}\Omega$$

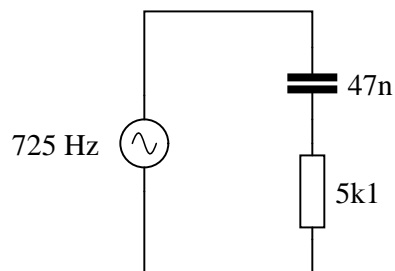
I want students to see that there are two different ways of approaching a problem such as this: with *scalar* math and with *complex number* math. If students have access to calculators that can do complex-number arithmetic, the "complex" approach is actually simpler for series-parallel combination circuits, and it yields richer (more informative) results.

Ask your students to determine which of the approaches most resembles DC circuit calculations. Incidentally, this is why I tend to prefer complex-number AC circuit calculations over scalar calculations: because of the conceptual continuity between AC and DC. When you use complex numbers to represent AC voltages, currents, and impedances, almost all the rules of DC circuits still apply. The big exception, of course, is calculations involving *power*.

---

Question 11

Which component, the resistor or the capacitor, will drop more voltage in this circuit?



Also, calculate the total impedance ( $Z_{total}$ ) of this circuit, expressing it in both rectangular and polar forms.

[file 03784](#)

---

Answer 11

The resistor will drop more voltage.

$$Z_{total} \text{ (rectangular form)} = 5100 \Omega - j4671 \Omega$$

$$Z_{total} \text{ (polar form)} = 6916 \Omega \angle -42.5^\circ$$

---

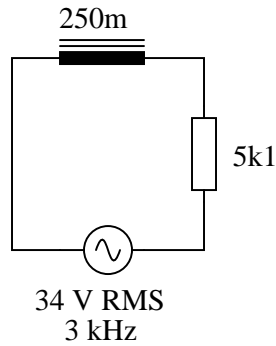
Notes 11

Ask your students how they were able to make the determination of greater voltage drop. Which method yields the fastest solution (i.e. requires the fewest steps)?

---

Question 12

Calculate the total impedance of this series LR circuit and then calculate the total circuit current:



Also, draw a phasor diagram showing how the individual component impedances relate to the total impedance.

[file 02103](#)

---

Answer 12

$$Z_{total} = 6.944 \text{ k}\Omega$$
$$I = 4.896 \text{ mA RMS}$$

---

Notes 12

This would be an excellent question to have students present methods of solution for. Sometimes I have students present nothing but their solution steps on the board in front of class (no arithmetic at all), in order to generate a discussion on problem-solving strategies. The important part of their education here is not to arrive at the correct answer or to memorize an algorithm for solving this type of problem, but rather how to *think* like a problem-solver, and how to methodically apply the math they know to the problem(s) at hand.

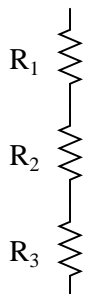


Question 13

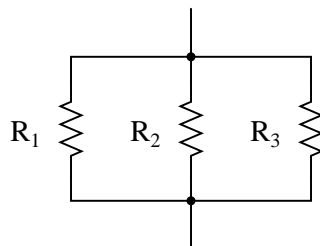
A quantity sometimes used in DC circuits is *conductance*, symbolized by the letter  $G$ . Conductance is the reciprocal of resistance ( $G = \frac{1}{R}$ ), and it is measured in the unit of siemens.

Expressing the values of resistors in terms of conductance instead of resistance has certain benefits in parallel circuits. Whereas resistances ( $R$ ) add in series and "diminish" in parallel (with a somewhat complex equation), conductances ( $G$ ) add in parallel and "diminish" in series. Thus, doing the math for series circuits is easier using resistance and doing math for parallel circuits is easier using conductance:

$$R_{\text{total}} = R_1 + R_2 + R_3$$



$$G_{\text{total}} = G_1 + G_2 + G_3$$



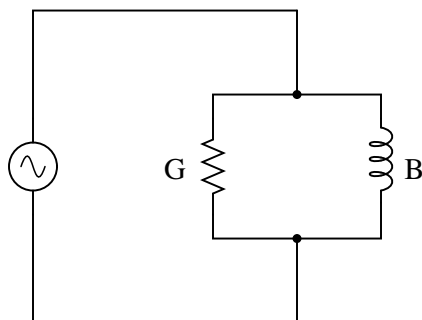
$$G_{\text{total}} = \frac{1}{\frac{1}{G_1} + \frac{1}{G_2} + \frac{1}{G_3}}$$

$$R_{\text{total}} = \frac{1}{\frac{1}{R_1} + \frac{1}{R_2} + \frac{1}{R_3}}$$

In AC circuits, we also have reciprocal quantities to reactance ( $X$ ) and impedance ( $Z$ ). The reciprocal of reactance is called *susceptance* ( $B = \frac{1}{X}$ ), and the reciprocal of impedance is called *admittance* ( $Y = \frac{1}{Z}$ ). Like conductance, both these reciprocal quantities are measured in units of siemens.

Write an equation that solves for the admittance ( $Y$ ) of this parallel circuit. The equation need not solve for the phase angle between voltage and current, but merely provide a scalar figure for admittance (in siemens):

$$Y_{\text{total}} = ???$$



file 00853

---

Answer 13

$$Y_{total} = \sqrt{G^2 + B^2}$$

Follow-up question #1: draw a phasor diagram showing how  $Y$ ,  $G$ , and  $B$  relate.

Follow-up question #2: re-write this equation using quantities of resistance ( $R$ ), reactance ( $X$ ), and impedance ( $Z$ ), instead of conductance ( $G$ ), susceptance ( $B$ ), and admittance ( $Y$ ).

---

Notes 13

Ask your students if this equation looks familiar to them. It should!

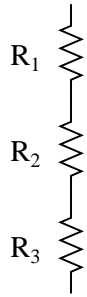
The answer to the second follow-up question is a matter of algebraic substitution. Work through this process with your students, and then ask them to compare the resulting equation with other equations they've seen before. Does its form look familiar to them in any way?

Question 14

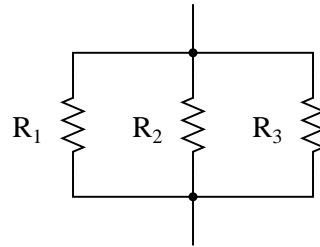
A quantity sometimes used in DC circuits is *conductance*, symbolized by the letter  $G$ . Conductance is the reciprocal of resistance ( $G = \frac{1}{R}$ ), and it is measured in the unit of siemens.

Expressing the values of resistors in terms of conductance instead of resistance has certain benefits in parallel circuits. Whereas resistances ( $R$ ) add in series and "diminish" in parallel (with a somewhat complex equation), conductances ( $G$ ) add in parallel and "diminish" in series. Thus, doing the math for series circuits is easier using resistance and doing math for parallel circuits is easier using conductance:

$$R_{\text{total}} = R_1 + R_2 + R_3$$



$$G_{\text{total}} = G_1 + G_2 + G_3$$



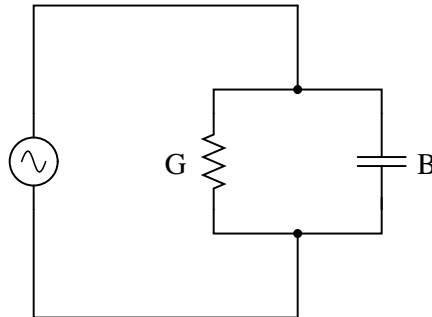
$$G_{\text{total}} = \frac{1}{\frac{1}{R_1} + \frac{1}{R_2} + \frac{1}{R_3}}$$

$$R_{\text{total}} = \frac{1}{\frac{1}{R_1} + \frac{1}{R_2} + \frac{1}{R_3}}$$

In AC circuits, we also have reciprocal quantities to reactance ( $X$ ) and impedance ( $Z$ ). The reciprocal of reactance is called *susceptance* ( $B = \frac{1}{X}$ ), and the reciprocal of impedance is called *admittance* ( $Y = \frac{1}{Z}$ ). Like conductance, both these reciprocal quantities are measured in units of siemens.

Write an equation that solves for the admittance ( $Y$ ) of this parallel circuit. The equation need not solve for the phase angle between voltage and current, but merely provide a scalar figure for admittance (in siemens):

$$Y_{\text{total}} = ???$$



[file 01845](#)

---

Answer 14

$$Y_{total} = \sqrt{G^2 + B^2}$$

Follow-up question #1: draw a phasor diagram showing how  $Y$ ,  $G$ , and  $B$  relate.

Follow-up question #2: re-write this equation using quantities of resistance ( $R$ ), reactance ( $X$ ), and impedance ( $Z$ ), instead of conductance ( $G$ ), susceptance ( $B$ ), and admittance ( $Y$ ).

---

Notes 14

Ask your students if this equation looks familiar to them. It should!

The answer to the challenge question is a matter of algebraic substitution. Work through this process with your students, and then ask them to compare the resulting equation with other equations they've seen before. Does its form look familiar to them in any way?

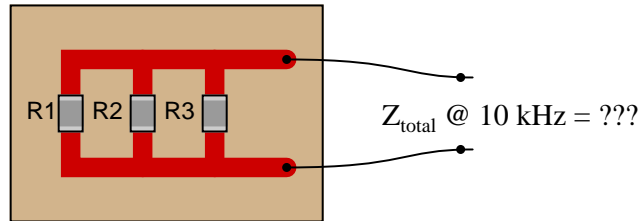
---

Question 15

Calculate the total impedance offered by these three resistors to a sinusoidal signal with a frequency of 10 kHz:

- $R_1 = 3.3 \text{ k}\Omega$
- $R_2 = 10 \text{ k}\Omega$
- $R_3 = 5 \text{ k}\Omega$

Surface-mount resistors  
on a printed-circuit board



State your answer in the form of a scalar number (not complex), but calculate it using two different strategies:

- Calculate total resistance ( $R_{total}$ ) first, then total impedance ( $Z_{total}$ ).
- Calculate individual admittances first ( $Y_{R1}$ ,  $Y_{R2}$ , and  $Y_{R3}$ ), then total impedance ( $Z_{total}$ ).

[file 01836](#)

---

Answer 15

**First strategy:**

$$R_{total} = 1.658 \text{ k}\Omega$$

$$Z_{total} = 1.658 \text{ k}\Omega$$

**Second strategy:**

$$Y_{R1} = 303 \text{ }\mu\text{S}$$

$$Y_{R2} = 100 \text{ }\mu\text{S}$$

$$Y_{R3} = 200 \text{ }\mu\text{S}$$

$$Y_{total} = 603 \text{ }\mu\text{S}$$

$$Z_{total} = 1.658 \text{ k}\Omega$$

---

Notes 15

This question is set up to be more complex than it has to be. Its purpose is to get students thinking in terms of parallel admittances, in a manner similar to parallel conductances.

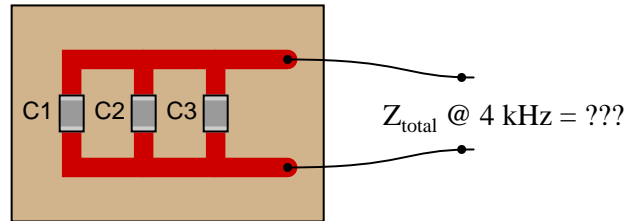
---

Question 16

Calculate the total impedance offered by these three capacitors to a sinusoidal signal with a frequency of 4 kHz:

- $C_1 = 0.1 \mu\text{F}$
- $C_2 = 0.047 \mu\text{F}$
- $C_3 = 0.033 \mu\text{F}$

Surface-mount capacitors  
on a printed-circuit board



State your answer in the form of a scalar number (not complex), but calculate it using two different strategies:

- Calculate total capacitance ( $C_{total}$ ) first, then total impedance ( $Z_{total}$ ).
- Calculate individual admittances first ( $Y_{C1}$ ,  $Y_{C2}$ , and  $Y_{C3}$ ), then total impedance ( $Z_{total}$ ).

[file 01846](#)

---

Answer 16

**First strategy:**

$$C_{total} = 0.18 \mu\text{F}$$
$$Z_{total} = 221 \Omega$$

**Second strategy:**

$$Y_{C1} = 2.51 \text{ mS}$$
$$Y_{C2} = 1.18 \text{ mS}$$
$$Y_{C3} = 829 \mu\text{S}$$
$$Y_{total} = 4.52 \text{ mS}$$
$$Z_{total} = 221 \Omega$$

---

Notes 16

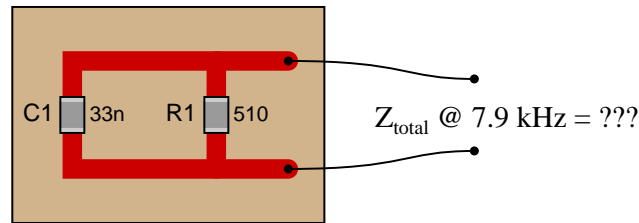
This question is another example of how multiple means of calculation will give you the same answer (if done correctly!). Make note to your students that this indicates an answer-checking strategy!

---

Question 17

Calculate the total impedance of these parallel-connected components, expressing it in polar form (magnitude and phase angle):

Surface-mount components  
on a printed-circuit board



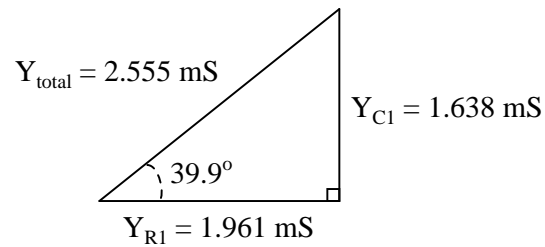
Also, draw an admittance triangle for this circuit.

[file 02108](#)

---

Answer 17

$$Z_{total} = 391.4 \Omega \angle -39.9^\circ$$



---

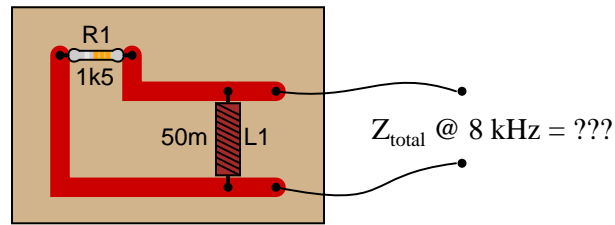
Notes 17

Some students may wonder why every side of the triangle is represented by a  $Y$  term, rather than  $Y$  for the hypotenuse,  $G$  for the adjacent, and  $B$  for the opposite. If students ask about this, remind them that conductance ( $G$ ) and susceptance ( $B$ ) are simple two different *types* of admittances ( $Y$ ), just as resistance ( $R$ ) and reactance ( $X$ ) are simply two different types of impedances ( $Z$ ).

---

### Question 18

Calculate the total impedance of this LR circuit, once using nothing but scalar numbers, and again using complex numbers:



[file 01837](#)

---

### Answer 18

#### Scalar calculations

$$\begin{aligned}R_1 &= 1.5 \text{ k}\Omega & G_{R1} &= 666.7 \text{ }\mu\text{S} \\X_{L1} &= 2.513 \text{ k}\Omega & B_{L1} &= 397.9 \text{ }\mu\text{S} \\Y_{total} &= \sqrt{G^2 + B^2} = 776.4 \text{ }\mu\text{S} \\Z_{total} &= \frac{1}{Y_{total}} = 1.288 \text{ k}\Omega\end{aligned}$$

#### Complex number calculations

$$\begin{aligned}R_1 &= 1.5 \text{ k}\Omega & \mathbf{Z}_{R1} &= 1.5 \text{ k}\Omega \angle 0^\circ \\X_{L1} &= 2.513 \text{ k}\Omega & \mathbf{Z}_{L1} &= 2.513 \text{ k}\Omega \angle 90^\circ \\ \mathbf{Z}_{total} &= \frac{1}{\frac{1}{\mathbf{Z}_{R1}} + \frac{1}{\mathbf{Z}_{L1}}} = 1.288 \text{ k}\Omega \angle 30.83^\circ\end{aligned}$$

---

### Notes 18

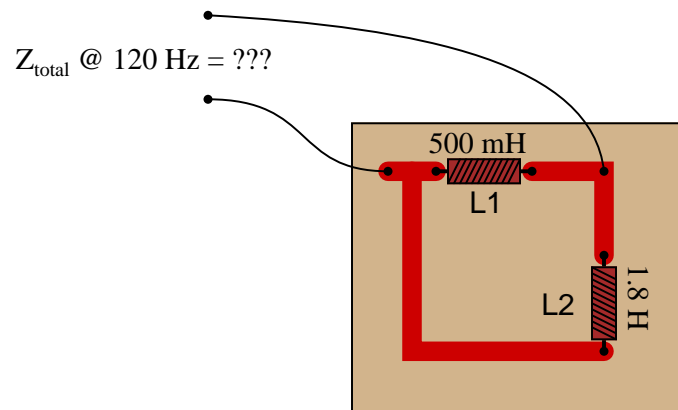
Some electronics textbooks (and courses) tend to emphasize scalar impedance calculations, while others emphasize complex number calculations. While complex number calculations provide more informative results (a phase shift given in *every* variable!) and exhibit conceptual continuity with DC circuit analysis (same rules, similar formulae), the scalar approach lends itself better to conditions where students do not have access to calculators capable of performing complex number arithmetic. Yes, of course, you can do complex number arithmetic without a powerful calculator, but it's a *lot* more tedious and prone to errors than calculating with admittances, susceptances, and conductances (primarily because the phase shift angle is omitted for each of the variables).



---

Question 19

Calculate the total impedance offered by these two inductors to a sinusoidal signal with a frequency of 120 Hz:



Show your work using three different problem-solving strategies:

- Calculating total inductance ( $L_{\text{total}}$ ) first, then total impedance ( $Z_{\text{total}}$ ).
- Calculating individual admittances first ( $Y_{L1}$  and  $Y_{L2}$ ), then total admittance ( $Y_{\text{total}}$ ), then total impedance ( $Z_{\text{total}}$ ).
- Using complex numbers: calculating individual impedances first ( $Z_{L1}$  and  $Z_{L2}$ ), then total impedance ( $Z_{\text{total}}$ ).

Do these two strategies yield the same total impedance value? Why or why not?

[file 01833](#)

---

Answer 19

**First strategy:**

$$L_{\text{total}} = 391.3 \text{ mH}$$

$$X_{\text{total}} = 295.0 \Omega$$

$$\mathbf{Z}_{\text{total}} = 295.0 \Omega \angle 90^\circ \text{ or } \mathbf{Z}_{\text{total}} = 0 + j295.0 \Omega$$

**Second strategy:**

$$Z_{L1} = X_{L1} = 377.0 \Omega$$

$$Y_{L1} = \frac{1}{Z_{L1}} = 2.653 \text{ mS}$$

$$Z_{L2} = X_{L2} = 1.357 \text{ k}\Omega$$

$$Y_{L2} = \frac{1}{Z_{L2}} = 736.8 \mu\text{S}$$

$$Y_{\text{total}} = 3.389 \text{ mS}$$

$$Z_{\text{total}} = \frac{1}{Y_{\text{total}}} = 295 \Omega$$

**Third strategy:** (using complex numbers)

$$X_{L1} = 377.0 \Omega \quad \mathbf{Z}_{L1} = 377.0 \Omega \angle 90^\circ$$

$$X_{L2} = 1.357 \text{ k}\Omega \quad \mathbf{Z}_{L2} = 1.357 \text{ k}\Omega \angle 90^\circ$$

$$\mathbf{Z}_{\text{total}} = 295.0 \Omega \angle 90^\circ \text{ or } \mathbf{Z}_{\text{total}} = 0 + j295.0 \Omega$$

Follow-up question: draw a phasor diagram showing how the two inductors' admittance phasors geometrically add to equal the total admittance.

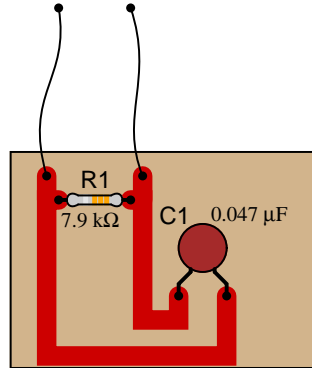
The purpose of this question is to get students to realize that *any* way they can calculate total impedance is correct, whether calculating total inductance and then calculating impedance from that, or by calculating the impedance of each inductor and then combining impedances to find a total impedance. This should be reassuring, because it means students have a way to check their work when analyzing circuits such as this!

---

Question 20

Calculate the total impedance of this RC circuit, once using nothing but scalar numbers, and again using complex numbers:

$$Z_{\text{total}} @ 400 \text{ Hz} = ???$$



[file 01838](#)

---

Answer 20

**Scalar calculations**

$$R_1 = 7.9 \text{ k}\Omega \quad G_{R1} = 126.6 \text{ }\mu\text{S}$$

$$X_{C1} = 8.466 \text{ k}\Omega \quad B_{C1} = 118.1 \text{ }\mu\text{S}$$

$$Y_{\text{total}} = \sqrt{G^2 + B^2} = 173.1 \text{ }\mu\text{S}$$

$$Z_{\text{total}} = \frac{1}{Y_{\text{total}}} = 5.776 \text{ k}\Omega$$

**Complex number calculations**

$$R_1 = 7.9 \text{ k}\Omega \quad Z_{R1} = 7.9 \text{ k}\Omega \angle 0^\circ$$

$$X_{C1} = 8.466 \text{ k}\Omega \quad Z_{C1} = 8.466 \text{ k}\Omega \angle -90^\circ$$

$$Z_{\text{total}} = \frac{1}{\frac{1}{Z_{R1}} + \frac{1}{Z_{C1}}} = 5.776 \text{ k}\Omega \angle -43.02^\circ$$

---

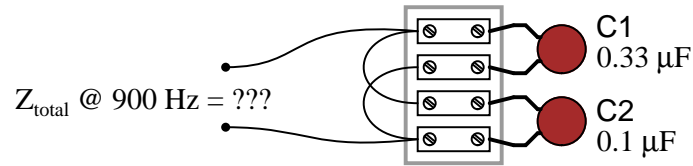
Notes 20

Some electronics textbooks (and courses) tend to emphasize scalar impedance calculations, while others emphasize complex number calculations. While complex number calculations provide more informative results (a phase shift given in *every* variable!) and exhibit conceptual continuity with DC circuit analysis (same rules, similar formulae), the scalar approach lends itself better to conditions where students do not have access to calculators capable of performing complex number arithmetic. Yes, of course, you can do complex number arithmetic without a powerful calculator, but it's a *lot* more tedious and prone to errors than calculating with admittances, susceptances, and conductances (primarily because the phase shift angle is omitted for each of the variables).

---

Question 21

Calculate the total impedance offered by these two capacitors to a sinusoidal signal with a frequency of 900 Hz:



Show your work using three different problem-solving strategies:

- Calculating total capacitance ( $C_{total}$ ) first, then total impedance ( $Z_{total}$ ).
- Calculating individual admittances first ( $Y_{C1}$  and  $Y_{C2}$ ), then total admittance ( $Y_{total}$ ), then total impedance ( $Z_{total}$ ).
- Using complex numbers: calculating individual impedances first ( $Z_{C1}$  and  $Z_{C2}$ ), then total impedance ( $Z_{total}$ ).

Do these two strategies yield the same total impedance value? Why or why not?

[file 01835](#)

---

Answer 21

**First strategy:**

$$C_{total} = 0.43 \mu\text{F}$$

$$X_{total} = 411.3 \Omega$$

$$\mathbf{Z}_{total} = 411.3 \Omega \angle -90^\circ \text{ or } \mathbf{Z}_{total} = 0 - j411.3 \Omega$$

**Second strategy:**

$$Z_{C1} = X_{C1} = 535.9 \Omega$$

$$Y_{C1} = \frac{1}{Z_{C1}} = 1.866 \text{ mS}$$

$$Z_{C2} = X_{C2} = 1.768 \text{ k}\Omega$$

$$Y_{C2} = \frac{1}{Z_{C2}} = 565.5 \mu\text{S}$$

$$Y_{total} = 2.432 \text{ mS}$$

$$Z_{total} = \frac{1}{Y_{total}} = 411.3 \Omega$$

**Third strategy:** (using complex numbers)

$$X_{C1} = 535.9 \Omega \quad \mathbf{Z}_{C1} = 535.9 \Omega \angle -90^\circ$$

$$X_{C2} = 1.768 \text{ k}\Omega \quad \mathbf{Z}_{C2} = 1.768 \text{ k}\Omega \angle -90^\circ$$

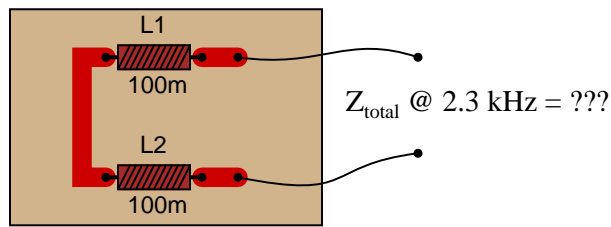
$$\mathbf{Z}_{total} = 411.3 \Omega \angle -90^\circ \text{ or } \mathbf{Z}_{total} = 0 - j411.3 \Omega$$

A common misconception many students have about capacitive reactances and impedances is that they must interact "oppositely" to how one would normally consider electrical opposition. That is, many students believe capacitive reactances and impedances should add in parallel and diminish in series, because that's what capacitance (in Farads) does! This is not true, however. Impedances *always* add in series and diminish in parallel, at least from the perspective of complex numbers. This is one of the reasons I favor AC circuit calculations using complex numbers: because then students may conceptually treat impedance just like they treat DC resistance.

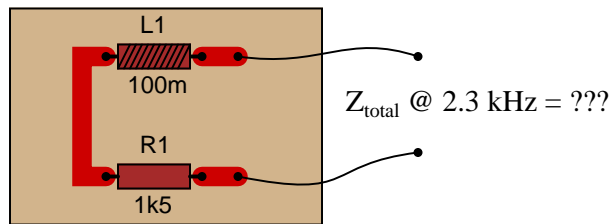
The purpose of this question is to get students to realize that *any* way they can calculate total impedance is correct, whether calculating total capacitance and then calculating impedance from that, or by calculating the impedance of each capacitor and then combining impedances to find a total impedance. This should be reassuring, because it means students have a way to check their work when analyzing circuits such as this!

Question 22

Calculate the total impedance for these two 100 mH inductors at 2.3 kHz, and draw a phasor diagram showing circuit impedances ( $Z_{total}$ ,  $R$ , and  $X$ ):

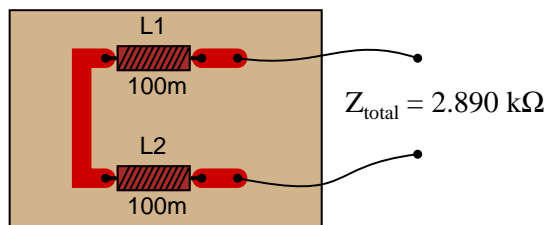


Now, re-calculate impedance and re-draw the phasor impedance diagram supposing the second inductor is replaced by a 1.5 k $\Omega$  resistor:

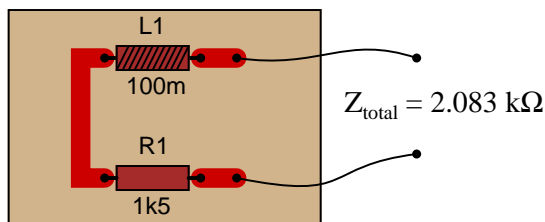
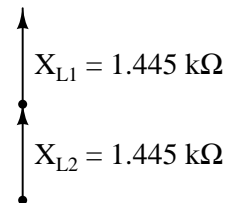


[file 02080](#)

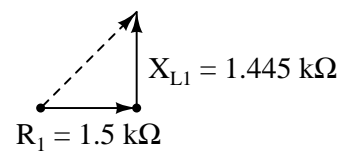
Answer 22



*Phasor diagram*



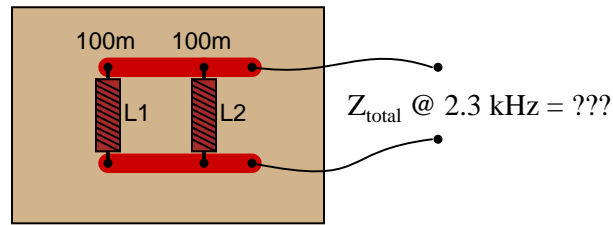
*Phasor diagram*



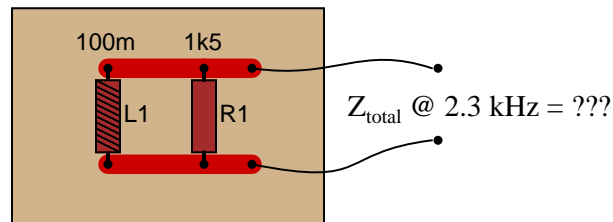
Phasor diagrams are powerful analytical tools, if one knows how to draw and interpret them. With hand calculators being so powerful and readily able to handle complex numbers in either polar or rectangular form, there is temptation to avoid phasor diagrams and let the calculator handle all the angle manipulation. However, students will have a much better understanding of phasors and complex numbers in AC circuits if you hold them accountable to representing quantities in that form.

Question 23

Calculate the total impedance for these two 100 mH inductors at 2.3 kHz, and draw a phasor diagram showing circuit admittances ( $Y_{total}$ ,  $G$ , and  $B$ ):

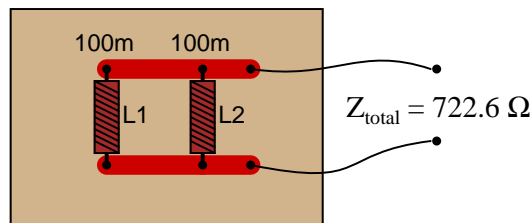


Now, re-calculate impedance and re-draw the phasor admittance diagram supposing the second inductor is replaced by a 1.5 k $\Omega$  resistor:

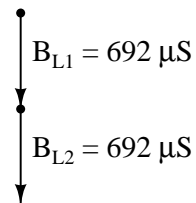


[file 02079](#)

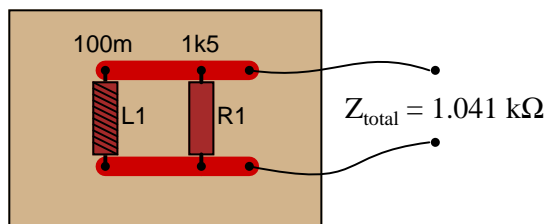
Answer 23



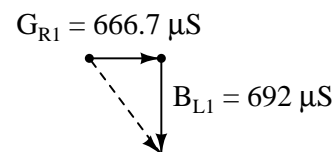
*Phasor diagram*



$Y_{total} = 1.384 \text{ mS}$



*Phasor diagram*



$Y_{total} = 960.9 \mu\text{S}$

Challenge question: why are the susceptance vectors ( $B_{L1}$  and  $B_{L2}$ ) pointed down instead of up as impedance vectors for inductances typically are?

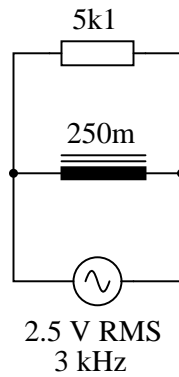


Phasor diagrams are powerful analytical tools, if one knows how to draw and interpret them. With hand calculators being so powerful and readily able to handle complex numbers in either polar or rectangular form, there is temptation to avoid phasor diagrams and let the calculator handle all the angle manipulation. However, students will have a much better understanding of phasors and complex numbers in AC circuits if you hold them accountable to representing quantities in that form.

---

Question 24

Calculate the individual currents through the inductor and through the resistor, the total current, and the total circuit impedance:



Also, draw a phasor diagram showing how the individual component currents relate to the total current.  
[file 02104](#)

---

Answer 24

$$\begin{aligned}I_L &= 530.5 \mu\text{A RMS} \\I_R &= 490.2 \mu\text{A RMS} \\I_{total} &= 722.3 \mu\text{A RMS} \\Z_{total} &= 3.461 \text{ k}\Omega\end{aligned}$$

---

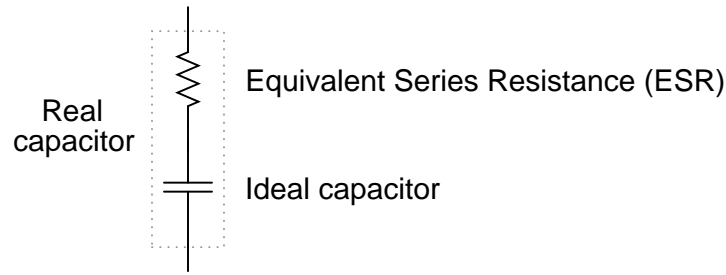
Notes 24

This would be an excellent question to have students present methods of solution for. Sometimes I have students present nothing but their solution steps on the board in front of class (no arithmetic at all), in order to generate a discussion on problem-solving strategies. The important part of their education here is not to arrive at the correct answer or to memorize an algorithm for solving this type of problem, but rather how to *think* like a problem-solver, and how to methodically apply the math they know to the problem(s) at hand.

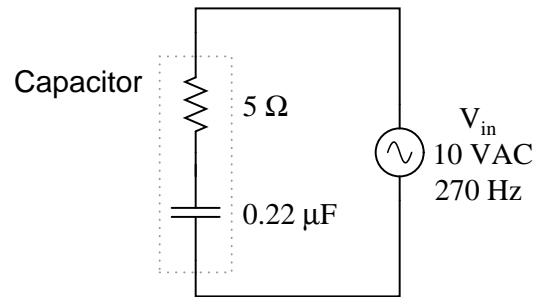
---

### Question 25

Due to the effects of a changing electric field on the dielectric of a capacitor, some energy is dissipated in capacitors subjected to AC. Generally, this is not very much, but it is there. This dissipative behavior is typically modeled as a series-connected resistance:



Calculate the magnitude and phase shift of the current through this capacitor, taking into consideration its equivalent series resistance (ESR):



Compare this against the magnitude and phase shift of the current for an ideal  $0.22 \mu\text{F}$  capacitor.  
[file 01847](#)

---

### Answer 25

$I = 3.732206 \text{ mA} \angle 89.89^\circ$  for the real capacitor with ESR.

$I = 3.732212 \text{ mA} \angle 90.00^\circ$  for the ideal capacitor.

Follow-up question #1: can this ESR be detected by a DC meter check of the capacitor? Why or why not?

Follow-up question #2: explain how the ESR of a capacitor can lead to physical heating of the component, especially under high-voltage, high-frequency conditions. What safety concerns might arise as a result of this?

---

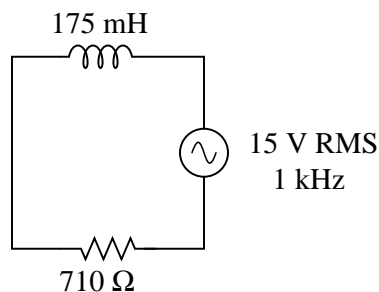
### Notes 25

Although capacitors do contain their own parasitic effects, ESR being one of them, they still tend to be much "purer" components than inductors for general use. This is another reason why capacitors are generally favored over inductors in applications where either will suffice.

---

Question 26

Solve for all voltages and currents in this series LR circuit:



[file 01830](#)

---

Answer 26

$$V_L = 12.60 \text{ volts RMS}$$

$$V_R = 8.137 \text{ volts RMS}$$

$$I = 11.46 \text{ milliamps RMS}$$

---

Notes 26

Nothing special here – just a straightforward exercise in series AC circuit calculations.

Students often have difficulty formulating a method of solution: determining what steps to take to get from the given conditions to a final answer. While it is helpful at first for you (the instructor) to show them, it is bad for you to show them too often, lest they stop thinking for themselves and merely follow your lead. A teaching technique I have found very helpful is to have students come up to the board (alone or in teams) in front of class to write their problem-solving strategies for all the others to see. They don't have to actually do the math, but rather outline the steps they would take, in the order they would take them. The following is a sample of a written problem-solving strategy for analyzing a series resistive-reactive AC circuit:

**Step 1:** Calculate all reactances ( $X$ ).

**Step 2:** Draw an impedance triangle ( $Z$  ;  $R$  ;  $X$ ), solving for  $Z$

**Step 3:** Calculate circuit current using Ohm's Law:  $I = \frac{V}{Z}$

**Step 4:** Calculate series voltage drops using Ohm's Law:  $V = IZ$

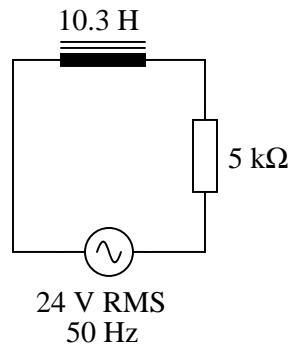
**Step 5:** Check work by drawing a voltage triangle ( $V_{total}$  ;  $V_1$  ;  $V_2$ ), solving for  $V_{total}$

By having students outline their problem-solving strategies, everyone gets an opportunity to see multiple methods of solution, and you (the instructor) get to see how (and if!) your students are thinking. An especially good point to emphasize in these "open thinking" activities is how to check your work to see if any mistakes were made.

---

Question 27

Solve for all voltages and currents in this series LR circuit, and also calculate the phase angle of the total impedance:



[file 01831](#)

---

Answer 27

$$\begin{aligned}V_L &= 13.04 \text{ volts RMS} \\V_R &= 20.15 \text{ volts RMS} \\I &= 4.030 \text{ milliamps RMS} \\ \Theta_Z &= 32.91^\circ\end{aligned}$$

---

Notes 27

Nothing special here – just a straightforward exercise in series AC circuit calculations.

Students often have difficulty formulating a method of solution: determining what steps to take to get from the given conditions to a final answer. While it is helpful at first for you (the instructor) to show them, it is bad for you to show them too often, lest they stop thinking for themselves and merely follow your lead. A teaching technique I have found very helpful is to have students come up to the board (alone or in teams) in front of class to write their problem-solving strategies for all the others to see. They don't have to actually do the math, but rather outline the steps they would take, in the order they would take them. The following is a sample of a written problem-solving strategy for analyzing a series resistive-reactive AC circuit:

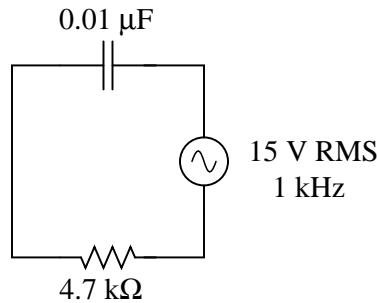
- Step 1:** Calculate all reactances ( $X$ ).
- Step 2:** Draw an impedance triangle ( $Z$  ;  $R$  ;  $X$ ), solving for  $Z$
- Step 3:** Calculate circuit current using Ohm's Law:  $I = \frac{V}{Z}$
- Step 4:** Calculate series voltage drops using Ohm's Law:  $V = IZ$
- Step 5:** Check work by drawing a voltage triangle ( $V_{total}$  ;  $V_1$  ;  $V_2$ ), solving for  $V_{total}$

By having students outline their problem-solving strategies, everyone gets an opportunity to see multiple methods of solution, and you (the instructor) get to see how (and if!) your students are thinking. An especially good point to emphasize in these "open thinking" activities is how to check your work to see if any mistakes were made.

---

Question 28

Solve for all voltages and currents in this series RC circuit:



file 01848

---

Answer 28

$$V_C = 14.39 \text{ volts RMS}$$

$$V_R = 4.248 \text{ volts RMS}$$

$$I = 903.9 \mu\text{A RMS}$$

Follow-up question: identify the consequences of a shorted capacitor in this circuit, with regard to circuit current and component voltage drops.

---

Notes 28

Nothing special here – just a straightforward exercise in series AC circuit calculations.

Students often have difficulty formulating a method of solution: determining what steps to take to get from the given conditions to a final answer. While it is helpful at first for you (the instructor) to show them, it is bad for you to show them too often, lest they stop thinking for themselves and merely follow your lead. A teaching technique I have found very helpful is to have students come up to the board (alone or in teams) in front of class to write their problem-solving strategies for all the others to see. They don't have to actually do the math, but rather outline the steps they would take, in the order they would take them. The following is a sample of a written problem-solving strategy for analyzing a series resistive-reactive AC circuit:

**Step 1:** Calculate all reactances ( $X$ ).

**Step 2:** Draw an impedance triangle ( $Z ; R ; X$ ), solving for  $Z$

**Step 3:** Calculate circuit current using Ohm's Law:  $I = \frac{V}{Z}$

**Step 4:** Calculate series voltage drops using Ohm's Law:  $V = IZ$

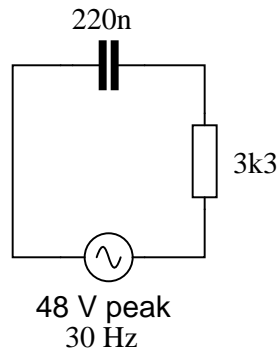
**Step 5:** Check work by drawing a voltage triangle ( $V_{total} ; V_1 ; V_2$ ), solving for  $V_{total}$

By having students outline their problem-solving strategies, everyone gets an opportunity to see multiple methods of solution, and you (the instructor) get to see how (and if!) your students are thinking. An especially good point to emphasize in these "open thinking" activities is how to check your work to see if any mistakes were made.

---

Question 29

Solve for all voltages and currents in this series RC circuit, and also calculate the phase angle of the total impedance:



[file 01849](#)

---

Answer 29

$$\begin{aligned}V_C &= 47.56 \text{ volts peak} \\V_R &= 6.508 \text{ volts peak} \\I &= 1.972 \text{ milliamps peak} \\ \Theta_Z &= -82.21^\circ\end{aligned}$$

Follow-up question: what would we have to do to get these answers in units RMS instead of units "peak"?

---

Notes 29

Bring to your students' attention the fact that total voltage in this circuit is given in "peak" units rather than RMS, and what effect this has on our answers.

Students often have difficulty formulating a method of solution: determining what steps to take to get from the given conditions to a final answer. While it is helpful at first for you (the instructor) to show them, it is bad for you to show them too often, lest they stop thinking for themselves and merely follow your lead. A teaching technique I have found very helpful is to have students come up to the board (alone or in teams) in front of class to write their problem-solving strategies for all the others to see. They don't have to actually do the math, but rather outline the steps they would take, in the order they would take them. The following is a sample of a written problem-solving strategy for analyzing a series resistive-reactive AC circuit:

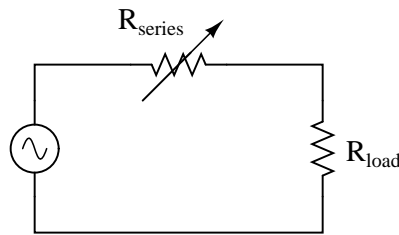
- Step 1:** Calculate all reactances ( $X$ ).
- Step 2:** Draw an impedance triangle ( $Z$  ;  $R$  ;  $X$ ), solving for  $Z$
- Step 3:** Calculate circuit current using Ohm's Law:  $I = \frac{V}{Z}$
- Step 4:** Calculate series voltage drops using Ohm's Law:  $V = IZ$
- Step 5:** Check work by drawing a voltage triangle ( $V_{total}$  ;  $V_1$  ;  $V_2$ ), solving for  $V_{total}$

By having students outline their problem-solving strategies, everyone gets an opportunity to see multiple methods of solution, and you (the instructor) get to see how (and if!) your students are thinking. An especially good point to emphasize in these "open thinking" activities is how to check your work to see if any mistakes were made.

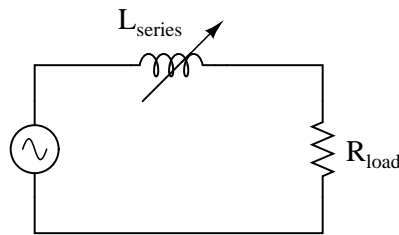
---

Question 30

One way to vary the amount of power delivered to a resistive AC load is by varying another resistance connected in series:



A problem with this power control strategy is that power is wasted in the series resistance ( $I^2 R_{series}$ ). A different strategy for controlling power is shown here, using a series *inductance* rather than resistance:



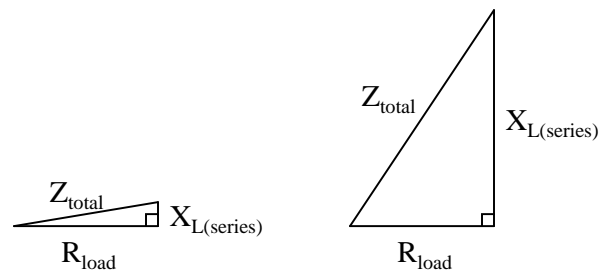
Explain why the latter circuit is more power-efficient than the former, and draw a phasor diagram showing how changes in  $L_{series}$  affect  $Z_{total}$ .

[file 01829](#)

---

Answer 30

Inductors are *reactive* rather than *resistive* components, and therefore do not dissipate power (ideally).



Follow-up question: the inductive circuit is not just more energy-efficient – it is safer as well. Identify a potential safety hazard that the resistive power-control circuit poses due to the energy dissipation of its variable resistor.

---

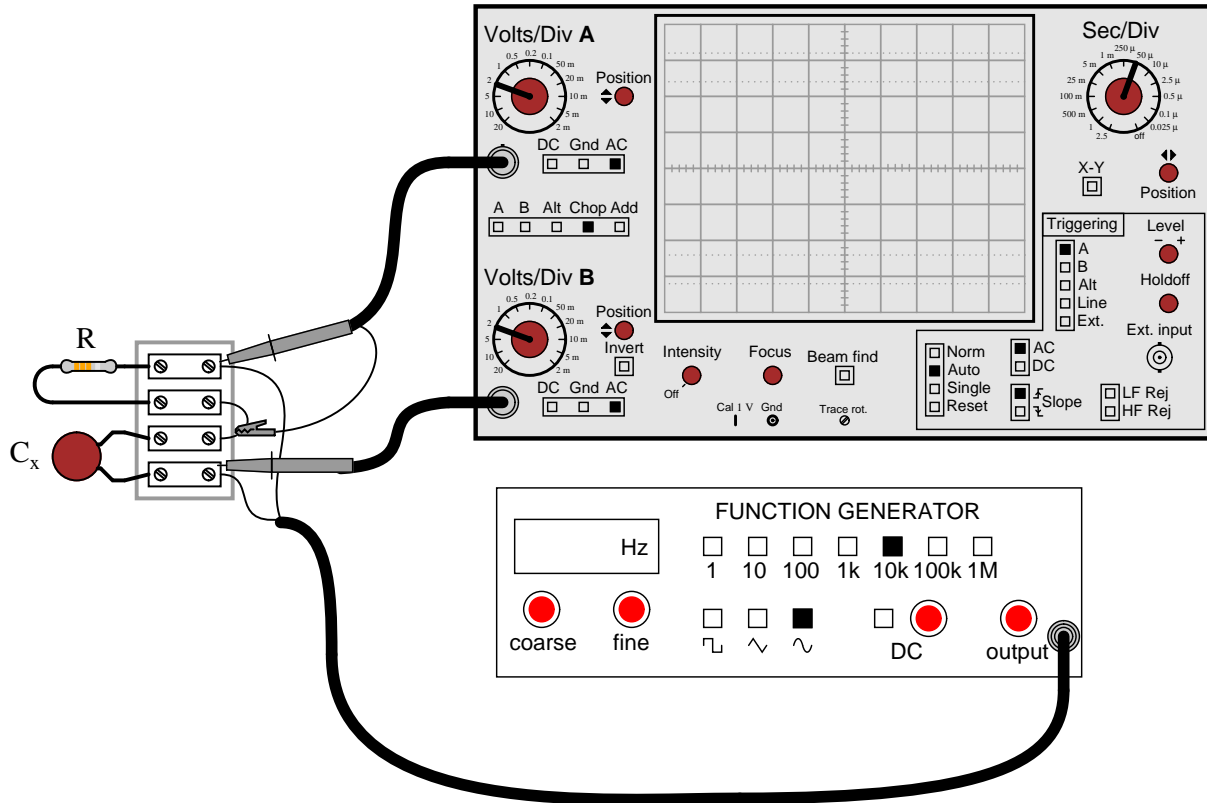
Notes 30

If appropriate, you may want to mention devices called *saturable reactors*, which are used to control power in AC circuits by the exact same principle: varying a series inductance.



Question 31

A technician needs to know the value of a capacitor, but does not have a capacitance meter nearby. In lieu of this, the technician sets up the following circuit to measure capacitance:



You happen to walk by this technician's workbench and ask, "How does this measurement setup work?" The technician responds, "You connect a resistor of known value ( $R$ ) in series with the capacitor of unknown value ( $C_x$ ), then adjust the generator frequency until the oscilloscope shows the two voltage drops to be equal, and then you calculate  $C_x$ ."

Explain how this system works, in your own words. Also, write the formula you would use to calculate the value of  $C_x$  given  $f$  and  $R$ .

[file 02114](#)

---

Answer 31

I'll let you figure out how to explain the operation of this test setup. The formula you would use looks like this:

$$C_x = \frac{1}{2\pi fR}$$

Follow-up question: could you use a similar setup to measure the inductance of an unknown inductor  $L_x$ ? Why or why not?

Challenge question: astute observers will note that this setup might not work in real life because the ground connection of the oscilloscope is *not* common with one of the function generator's leads. Explain why this might be a problem, and suggest a practical solution for it.

---

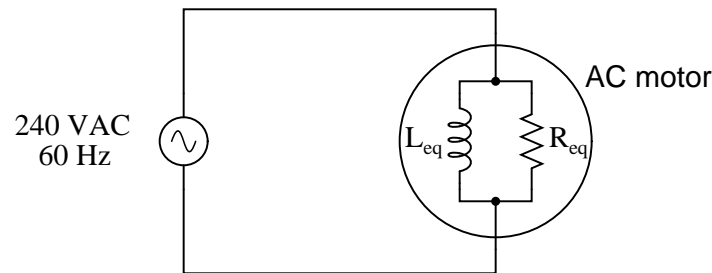
Notes 31

This method of measuring capacitance (or inductance for that matter) is fairly old, and works well if the unknown component has a high  $Q$  value.

---

### Question 32

A large AC electric motor under load can be considered as a parallel combination of resistance and inductance:



Calculate the current necessary to power this motor if the equivalent resistance and inductance is  $20 \Omega$  and  $238 \text{ mH}$ , respectively.

[file 01839](#)

---

### Answer 32

$$I_{supply} = 12.29 \text{ A}$$

---

### Notes 32

This is a practical example of a parallel LR circuit, as well as an example of how complex electrical devices may be "modeled" by collections of ideal components. To be honest, a loaded AC motor's characteristics are quite a bit more complex than what the parallel LR model would suggest, but at least it's a start!

Students often have difficulty formulating a method of solution: determining what steps to take to get from the given conditions to a final answer. While it is helpful at first for you (the instructor) to show them, it is bad for you to show them too often, lest they stop thinking for themselves and merely follow your lead. A teaching technique I have found very helpful is to have students come up to the board (alone or in teams) in front of class to write their problem-solving strategies for all the others to see. They don't have to actually do the math, but rather outline the steps they would take, in the order they would take them. The following is a sample of a written problem-solving strategy for analyzing a series resistive-reactive AC circuit:

**Step 1:** Calculate all reactances ( $X$ ).

**Step 2:** Draw an impedance triangle ( $Z$  ;  $R$  ;  $X$ ), solving for  $Z$

**Step 3:** Calculate circuit current using Ohm's Law:  $I = \frac{V}{Z}$

**Step 4:** Calculate series voltage drops using Ohm's Law:  $V = IZ$

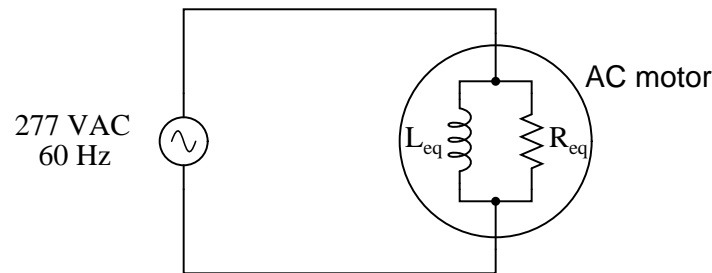
**Step 5:** Check work by drawing a voltage triangle ( $V_{total}$  ;  $V_1$  ;  $V_2$ ), solving for  $V_{total}$

By having students outline their problem-solving strategies, everyone gets an opportunity to see multiple methods of solution, and you (the instructor) get to see how (and if!) your students are thinking. An especially good point to emphasize in these "open thinking" activities is how to check your work to see if any mistakes were made.

---

### Question 33

A large AC electric motor under load can be considered as a parallel combination of resistance and inductance:



Calculate the equivalent inductance ( $L_{eq}$ ) if the measured source current is 27.5 amps and the motor's equivalent resistance ( $R_{eq}$ ) is 11.2  $\Omega$ .

[file 01840](#)

---

### Answer 33

$$L_{eq} = 61.11 \text{ mH}$$

---

### Notes 33

Here is a case where scalar calculations (R, G, X, B, Y) are *much* easier than complex number calculations (all Z) would be.

Students often have difficulty formulating a method of solution: determining what steps to take to get from the given conditions to a final answer. While it is helpful at first for you (the instructor) to show them, it is bad for you to show them too often, lest they stop thinking for themselves and merely follow your lead. A teaching technique I have found very helpful is to have students come up to the board (alone or in teams) in front of class to write their problem-solving strategies for all the others to see. They don't have to actually do the math, but rather outline the steps they would take, in the order they would take them. The following is a sample of a written problem-solving strategy for analyzing a series resistive-reactive AC circuit:

**Step 1:** Calculate all reactances ( $X$ ).

**Step 2:** Draw an impedance triangle ( $Z$  ;  $R$  ;  $X$ ), solving for  $Z$

**Step 3:** Calculate circuit current using Ohm's Law:  $I = \frac{V}{Z}$

**Step 4:** Calculate series voltage drops using Ohm's Law:  $V = IZ$

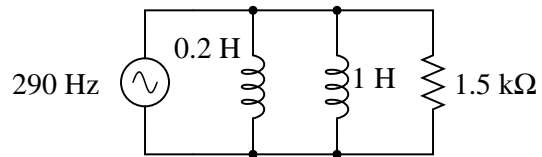
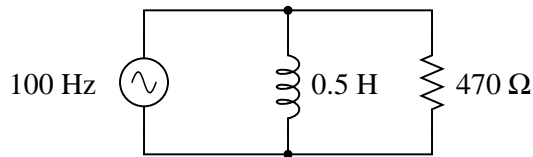
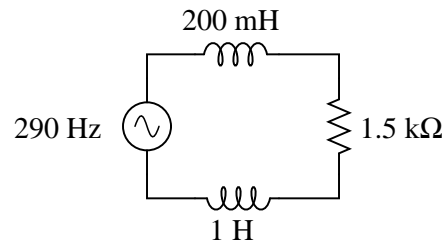
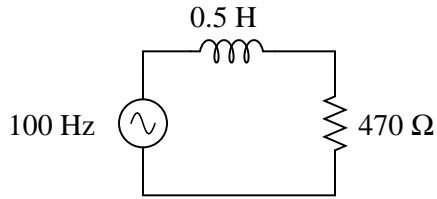
**Step 5:** Check work by drawing a voltage triangle ( $V_{total}$  ;  $V_1$  ;  $V_2$ ), solving for  $V_{total}$

By having students outline their problem-solving strategies, everyone gets an opportunity to see multiple methods of solution, and you (the instructor) get to see how (and if!) your students are thinking. An especially good point to emphasize in these "open thinking" activities is how to check your work to see if any mistakes were made.

---

Question 34

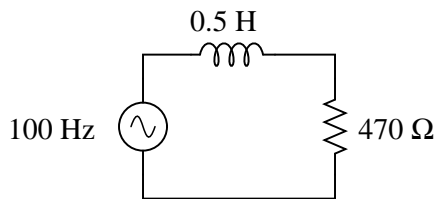
Calculate the total impedances (complete with phase angles) for each of the following inductor-resistor circuits:



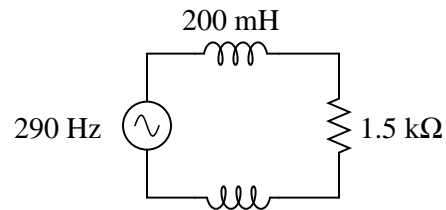
[file 02106](#)

---

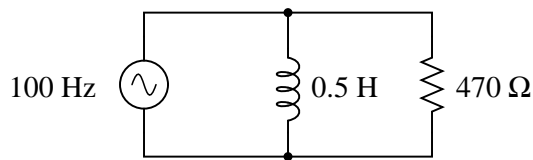
Answer 34



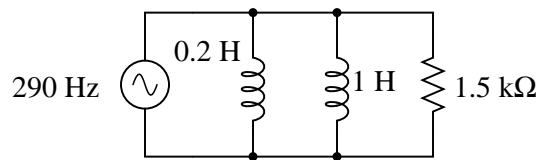
$$\mathbf{Z}_{\text{total}} = 565.3 \Omega \angle 33.76^\circ$$



$$\mathbf{Z}_{\text{total}} = 2.652 \text{ k}\Omega \angle 55.55^\circ$$



$$\mathbf{Z}_{\text{total}} = 261.2 \Omega \angle 56.24^\circ$$



$$\mathbf{Z}_{\text{total}} = 297.6 \Omega \angle 78.55^\circ$$

---

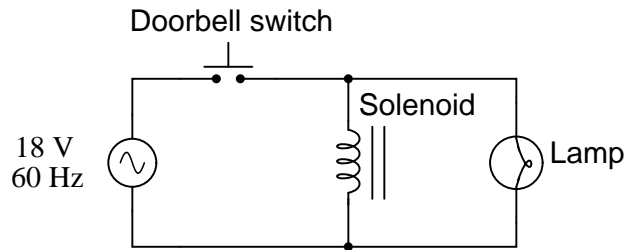
Notes 34

Have your students explain how they solved for each impedance, step by step. You may find different approaches to solving the same problem(s), and your students will benefit from seeing the diversity of solution techniques.

---

Question 35

A doorbell ringer has a solenoid with an inductance of 63 mH connected in parallel with a lamp (for visual indication) having a resistance of 150 ohms:



Calculate the phase shift of the total current (in units of degrees) in relation to the total supply voltage, when the doorbell switch is actuated.

[file 02105](#)

---

Answer 35

$$\Theta = 81 \text{ degrees}$$

Suppose the lamp turned on whenever the pushbutton switch was actuated, but the doorbell refused to ring. Identify what you think to be the most likely fault which could account for this problem.

---

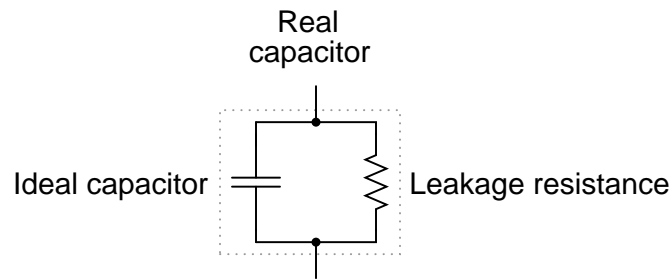
Notes 35

This would be an excellent question to have students present methods of solution for. Sometimes I have students present nothing but their solution steps on the board in front of class (no arithmetic at all), in order to generate a discussion on problem-solving strategies. The important part of their education here is not to arrive at the correct answer or to memorize an algorithm for solving this type of problem, but rather how to *think* like a problem-solver, and how to methodically apply the math they know to the problem(s) at hand.

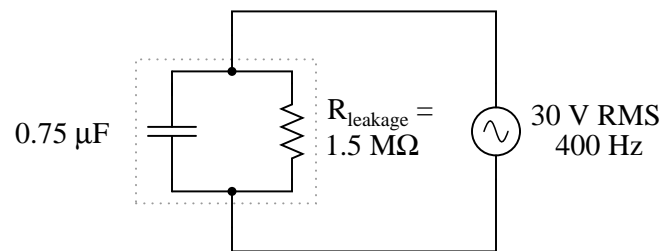
---

Question 36

If the dielectric substance between a capacitor's plates is not a perfect insulator, there will be a path for direct current (DC) from one plate to the other. This is typically called *leakage resistance*, and it is modeled as a shunt resistance to an ideal capacitance:



Calculate the magnitude and phase shift of the current drawn by this real capacitor, if powered by a sinusoidal voltage source of 30 volts RMS at 400 Hz:



Compare this against the magnitude and phase shift of the current for an ideal capacitor (no leakage).  
[file 01850](#)

---

Answer 36

$\mathbf{I} = 56.548671 \text{ mA} \angle 89.98^\circ$  for the real capacitor with leakage resistance.

$\mathbf{I} = 56.548668 \text{ mA} \angle 90.00^\circ$  for the ideal capacitor.

Discuss with your students the fact that electrolytic capacitors typically have more leakage (less  $R_{leakage}$ ) than most other capacitor types, due to the thinness of the dielectric oxide layer.

Students often have difficulty formulating a method of solution: determining what steps to take to get from the given conditions to a final answer. While it is helpful at first for you (the instructor) to show them, it is bad for you to show them too often, lest they stop thinking for themselves and merely follow your lead. A teaching technique I have found very helpful is to have students come up to the board (alone or in teams) in front of class to write their problem-solving strategies for all the others to see. They don't have to actually do the math, but rather outline the steps they would take, in the order they would take them. The following is a sample of a written problem-solving strategy for analyzing a series resistive-reactive AC circuit:

**Step 1:** Calculate all reactances ( $X$ ).

**Step 2:** Draw an impedance triangle ( $Z ; R ; X$ ), solving for  $Z$

**Step 3:** Calculate circuit current using Ohm's Law:  $I = \frac{V}{Z}$

**Step 4:** Calculate series voltage drops using Ohm's Law:  $V = IZ$

**Step 5:** Check work by drawing a voltage triangle ( $V_{total} ; V_1 ; V_2$ ), solving for  $V_{total}$

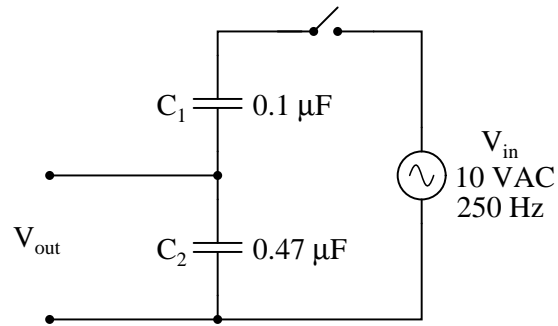
By having students outline their problem-solving strategies, everyone gets an opportunity to see multiple methods of solution, and you (the instructor) get to see how (and if!) your students are thinking. An especially good point to emphasize in these "open thinking" activities is how to check your work to see if any mistakes were made.



---

Question 37

Voltage divider circuits may be constructed from reactive components just as easily as they may be constructed from resistors. Take this capacitive voltage divider, for instance:



Calculate the magnitude and phase shift of  $V_{out}$ . Also, describe what advantages a capacitive voltage divider might have over a resistive voltage divider.

[file 00638](#)

---

Answer 37

$$V_{out} = 1.754 \text{ V} \angle 0^\circ$$

Follow-up question #1: explain why the division ratio of a capacitive voltage divider remains constant with changes in signal frequency, even though we know that the reactance of the capacitors ( $X_{C1}$  and  $X_{C2}$ ) will change.

Follow-up question #2: one interesting feature of capacitive voltage dividers is that they harbor the possibility of electric shock after being disconnected from the voltage source, if the source voltage is high enough and if the disconnection happens at just the right time. Explain why a capacitive voltage divider poses this threat whereas a resistive voltage divider does not. Also, identify what the *time* of disconnection from the AC voltage source has to do with shock hazard.

---

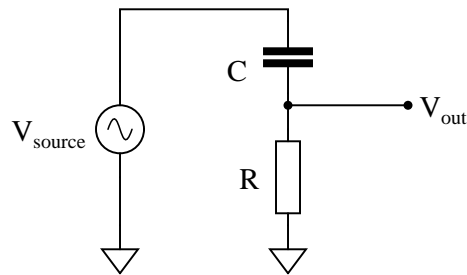
Notes 37

Capacitive voltage dividers find use in high-voltage AC instrumentation, due to some of the advantages they exhibit over resistive voltage dividers. Your students should take special note of the phase angle for the capacitor's voltage drop. Why it is 0 degrees, and not some other angle?

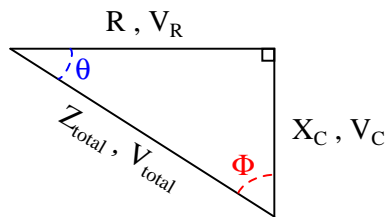
---

Question 38

A student is asked to calculate the phase shift for the following circuit's output voltage, relative to the phase of the source voltage:



He recognizes this as a series circuit, and therefore realizes that a right triangle would be appropriate for representing component impedances and component voltage drops (because both impedance and voltage are quantities that add in series, and the triangle represents phasor addition):



The problem now is, which angle does the student solve for in order to find the phase shift of  $V_{\text{out}}$ ? The triangle contains two angles besides the  $90^\circ$  angle,  $\Theta$  and  $\Phi$ . Which one represents the output phase shift, and more importantly, *why*?

[file 03748](#)

---

Answer 38

The proper angle in this circuit is  $\Theta$ , and it will be a positive (leading) quantity.

---

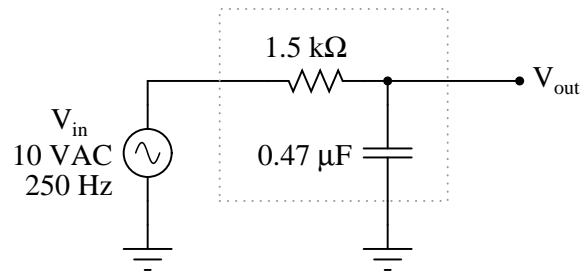
Notes 38

Too many students blindly use impedance and voltage triangles without really understand what they are and why they work. These same students will have no idea how to approach a problem like this. Work with them to help them understand!

---

Question 39

Calculate the output voltage of this phase-shifting circuit, expressing it in polar form (magnitude and phase angle relative to the source voltage):



file 02620

---

Answer 39

$$V_{out} = 6.7\text{ V} \angle -47.9^\circ$$

---

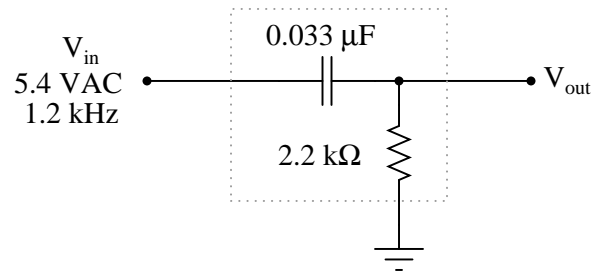
Notes 39

This is a very practical application of resistor-capacitor (RC) circuits: to introduce a phase shift to an AC signal. Examples of where a circuit such as this may be used include oscillators (to introduce phase shift into a feedback network for a total phase shift of  $360^\circ$ ) and thyristor firing control circuits (phase-shifting the triggering voltage in relation to the source voltage).

---

Question 40

Calculate the output voltage of this phase-shifting circuit, expressing it in polar form (magnitude and phase angle relative to the source voltage):



file 02621

---

Answer 40

$$V_{out} = 2.593 \text{ V} \angle 61.3^\circ$$

---

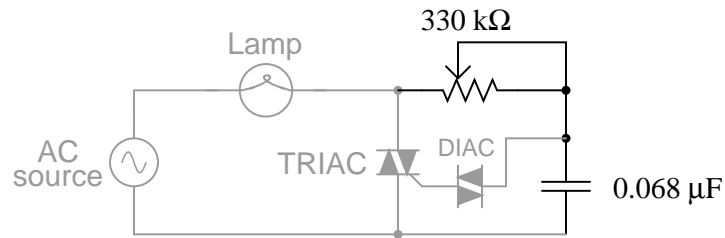
Notes 40

This is a very practical application of resistor-capacitor (RC) circuits: to introduce a phase shift to an AC signal. Examples of where a circuit such as this may be used include oscillators (to introduce phase shift into a feedback network for a total phase shift of  $360^\circ$ ) and thyristor firing control circuits (phase-shifting the triggering voltage in relation to the source voltage).

---

Question 41

In this circuit, a series resistor-capacitor network creates a phase-shifted voltage for the "gate" terminal of a power-control device known as a *TRIAC*. All portions of the circuit except for the RC network are "shaded" for de-emphasis:



Calculate how many degrees of phase shift the capacitor's voltage is, compared to the total voltage across the series RC network, assuming a frequency of 60 Hz, and a 50% potentiometer setting.

[file 00637](#)

---

Answer 41

$$E_C \text{ phase shift} = -76.7^\circ$$

Challenge question: what effect will a change in potentiometer setting have on this phase angle? Specifically, will increasing the resistance make the phase shift approach  $-90^\circ$  or approach  $0^\circ$ ?

---

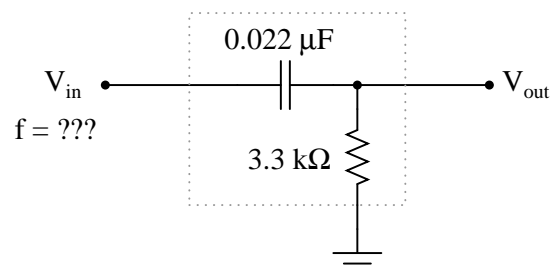
Notes 41

In this question, I purposely omitted any reference to voltage levels, so the students would have to set up part of the problem themselves. The goal here is to build problem-solving skills.

---

Question 42

Determine the input frequency necessary to give the output voltage a phase shift of  $70^\circ$ :



file 02623

---

Answer 42

$$f = 798 \text{ Hz}$$

---

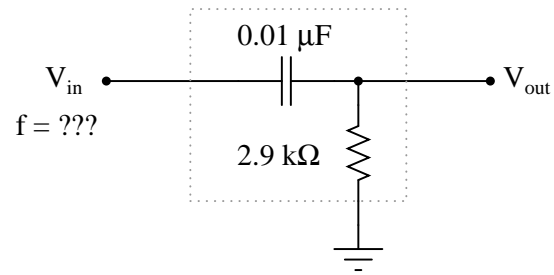
Notes 42

Phase-shifting circuits are very useful, and important to understand. They are particularly important in some types of oscillator circuits, which rely on RC networks such as this to provide certain phase shifts to sustain oscillation.

---

Question 43

Determine the input frequency necessary to give the output voltage a phase shift of  $40^\circ$ :



file 02622

---

Answer 43

$$f = 6.54 \text{ kHz}$$

---

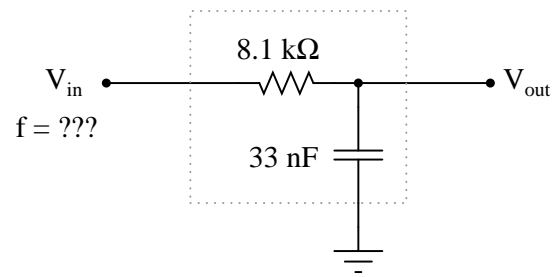
Notes 43

Phase-shifting circuits are very useful, and important to understand. They are particularly important in some types of oscillator circuits, which rely on RC networks such as this to provide certain phase shifts to sustain oscillation.

---

Question 44

Determine the input frequency necessary to give the output voltage a phase shift of  $-38^\circ$ :



file 02626

---

Answer 44

$$f = 465\text{ Hz}$$

---

Notes 44

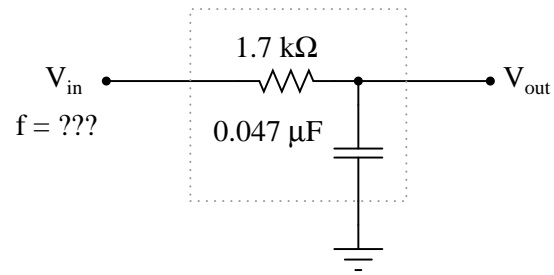
Phase-shifting circuits are very useful, and important to understand. They are particularly important in some types of oscillator circuits, which rely on RC networks such as this to provide certain phase shifts to sustain oscillation.



---

Question 45

Determine the input frequency necessary to give the output voltage a phase shift of  $-25^\circ$ :



file 02625

---

Answer 45

$$f = 929 \text{ Hz}$$

---

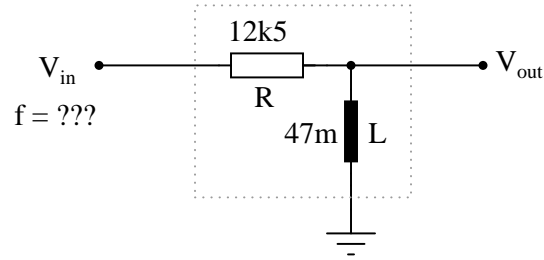
Notes 45

Phase-shifting circuits are very useful, and important to understand. They are particularly important in some types of oscillator circuits, which rely on RC networks such as this to provide certain phase shifts to sustain oscillation.

---

Question 46

Determine the input frequency necessary to give the output voltage a phase shift of  $75^\circ$ :



Also, write an equation that solves for frequency ( $f$ ), given all the other variables ( $R$ ,  $L$ , and phase angle  $\theta$ ).

[file 03282](#)

---

Answer 46

$$f = 11.342 \text{ kHz}$$

$$f = \frac{R}{2\pi L \tan \theta}$$

---

Notes 46

Discuss with your students what a good procedure might be for calculating the unknown values in this problem, and also how they might check their work.

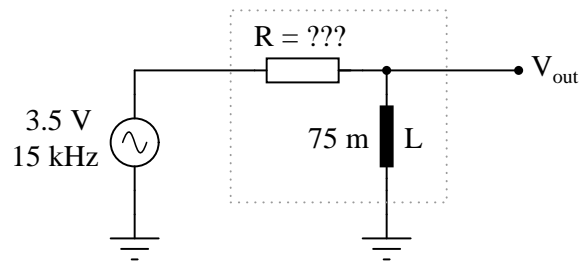
Students often have difficulty formulating a method of solution: determining what steps to take to get from the given conditions to a final answer. While it is helpful at first for you (the instructor) to show them, it is bad for you to show them too often, lest they stop thinking for themselves and merely follow your lead. A teaching technique I have found very helpful is to have students come up to the board (alone or in teams) in front of class to write their problem-solving strategies for all the others to see. They don't have to actually do the math, but rather outline the steps they would take, in the order they would take them.

By having students outline their problem-solving strategies, everyone gets an opportunity to see multiple methods of solution, and you (the instructor) get to see how (and if!) your students are thinking. An especially good point to emphasize in these "open thinking" activities is how to check your work to see if any mistakes were made.

---

Question 47

Determine the necessary resistor value to give the output voltage a phase shift of  $44^\circ$ :



Also, write an equation that solves for this resistance value ( $R$ ), given all the other variables ( $f$ ,  $L$ , and phase angle  $\theta$ ).

[file 03283](#)

---

Answer 47

$$R = 6.826 \text{ k}\Omega$$

$$R = 2\pi fL \tan \theta$$

---

Notes 47

Discuss with your students what a good procedure might be for calculating the unknown values in this problem, and also how they might check their work.

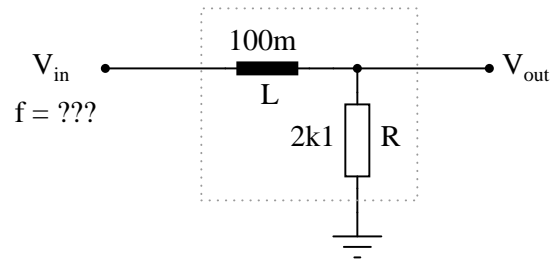
Students often have difficulty formulating a method of solution: determining what steps to take to get from the given conditions to a final answer. While it is helpful at first for you (the instructor) to show them, it is bad for you to show them too often, lest they stop thinking for themselves and merely follow your lead. A teaching technique I have found very helpful is to have students come up to the board (alone or in teams) in front of class to write their problem-solving strategies for all the others to see. They don't have to actually do the math, but rather outline the steps they would take, in the order they would take them.

By having students outline their problem-solving strategies, everyone gets an opportunity to see multiple methods of solution, and you (the instructor) get to see how (and if!) your students are thinking. An especially good point to emphasize in these "open thinking" activities is how to check your work to see if any mistakes were made.

---

Question 48

Determine the input frequency necessary to give the output voltage a phase shift of  $-40^\circ$ :



Also, write an equation that solves for frequency ( $f$ ), given all the other variables ( $R$ ,  $L$ , and phase angle  $\theta$ ).

[file 03280](#)

---

Answer 48

$$f = 2.804 \text{ kHz}$$

$$f = -\frac{R \tan \theta}{2\pi L}$$

---

Notes 48

Discuss with your students what a good procedure might be for calculating the unknown values in this problem, and also how they might check their work.

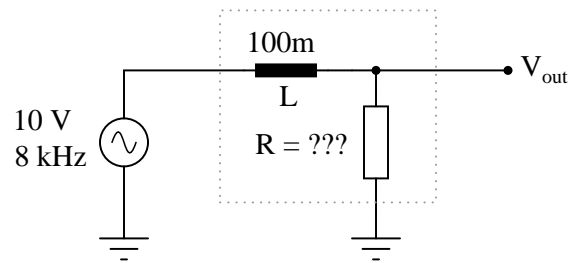
Students often have difficulty formulating a method of solution: determining what steps to take to get from the given conditions to a final answer. While it is helpful at first for you (the instructor) to show them, it is bad for you to show them too often, lest they stop thinking for themselves and merely follow your lead. A teaching technique I have found very helpful is to have students come up to the board (alone or in teams) in front of class to write their problem-solving strategies for all the others to see. They don't have to actually do the math, but rather outline the steps they would take, in the order they would take them.

By having students outline their problem-solving strategies, everyone gets an opportunity to see multiple methods of solution, and you (the instructor) get to see how (and if!) your students are thinking. An especially good point to emphasize in these "open thinking" activities is how to check your work to see if any mistakes were made.

---

Question 49

Determine the necessary resistor value to give the output voltage a phase shift of  $-60^\circ$ :



Also, write an equation that solves for this resistance value ( $R$ ), given all the other variables ( $f$ ,  $L$ , and phase angle  $\theta$ ).

[file 03281](#)

---

Answer 49

$$R = 2.902 \text{ k}\Omega$$

$$R = -\frac{2\pi fL}{\tan \theta}$$

---

Notes 49

Discuss with your students what a good procedure might be for calculating the unknown values in this problem, and also how they might check their work.

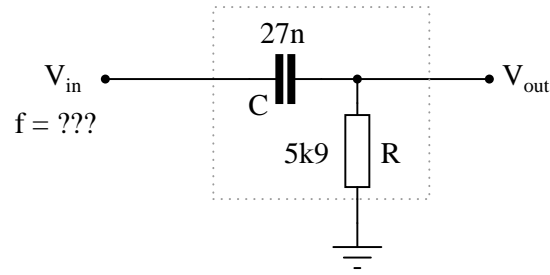
Students often have difficulty formulating a method of solution: determining what steps to take to get from the given conditions to a final answer. While it is helpful at first for you (the instructor) to show them, it is bad for you to show them too often, lest they stop thinking for themselves and merely follow your lead. A teaching technique I have found very helpful is to have students come up to the board (alone or in teams) in front of class to write their problem-solving strategies for all the others to see. They don't have to actually do the math, but rather outline the steps they would take, in the order they would take them.

By having students outline their problem-solving strategies, everyone gets an opportunity to see multiple methods of solution, and you (the instructor) get to see how (and if!) your students are thinking. An especially good point to emphasize in these "open thinking" activities is how to check your work to see if any mistakes were made.

---

Question 50

Determine the input frequency necessary to give the output voltage a phase shift of  $25^\circ$ :



Also, write an equation that solves for frequency ( $f$ ), given all the other variables ( $R$ ,  $C$ , and phase angle  $\theta$ ).

[file 03284](#)

---

Answer 50

$$f = 2.143 \text{ kHz}$$

$$f = \frac{1}{2\pi RC \tan \theta}$$

---

Notes 50

Discuss with your students what a good procedure might be for calculating the unknown values in this problem, and also how they might check their work.

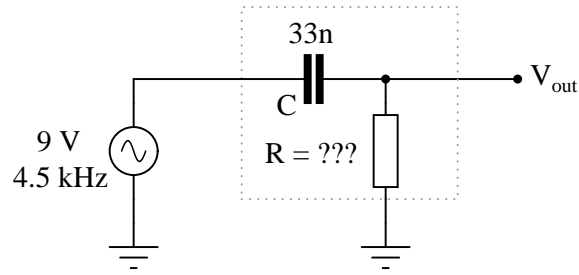
Students often have difficulty formulating a method of solution: determining what steps to take to get from the given conditions to a final answer. While it is helpful at first for you (the instructor) to show them, it is bad for you to show them too often, lest they stop thinking for themselves and merely follow your lead. A teaching technique I have found very helpful is to have students come up to the board (alone or in teams) in front of class to write their problem-solving strategies for all the others to see. They don't have to actually do the math, but rather outline the steps they would take, in the order they would take them.

By having students outline their problem-solving strategies, everyone gets an opportunity to see multiple methods of solution, and you (the instructor) get to see how (and if!) your students are thinking. An especially good point to emphasize in these "open thinking" activities is how to check your work to see if any mistakes were made.

---

Question 51

Determine the necessary resistor value to give the output voltage a phase shift of  $58^\circ$ :



Also, write an equation that solves for this resistance value ( $R$ ), given all the other variables ( $f$ ,  $C$ , and phase angle  $\theta$ ).

[file 03285](#)

---

Answer 51

$$R = 669.7 \, \Omega$$

$$R = \frac{1}{2\pi f C \tan \theta}$$

---

Notes 51

Discuss with your students what a good procedure might be for calculating the unknown values in this problem, and also how they might check their work.

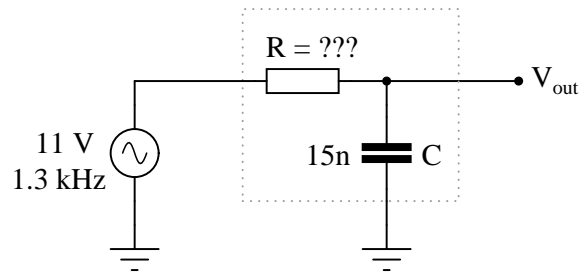
Students often have difficulty formulating a method of solution: determining what steps to take to get from the given conditions to a final answer. While it is helpful at first for you (the instructor) to show them, it is bad for you to show them too often, lest they stop thinking for themselves and merely follow your lead. A teaching technique I have found very helpful is to have students come up to the board (alone or in teams) in front of class to write their problem-solving strategies for all the others to see. They don't have to actually do the math, but rather outline the steps they would take, in the order they would take them.

By having students outline their problem-solving strategies, everyone gets an opportunity to see multiple methods of solution, and you (the instructor) get to see how (and if!) your students are thinking. An especially good point to emphasize in these "open thinking" activities is how to check your work to see if any mistakes were made.

---

Question 52

Determine the necessary resistor value to give the output voltage a phase shift of  $-64^\circ$ :



Also, write an equation that solves for this resistance value ( $R$ ), given all the other variables ( $f$ ,  $C$ , and phase angle  $\theta$ ).

[file 03287](#)

---

Answer 52

$$R = 16.734 \text{ k}\Omega$$

$$R = -\frac{\tan \theta}{2\pi f C}$$

---

Notes 52

Discuss with your students what a good procedure might be for calculating the unknown values in this problem, and also how they might check their work.

Students often have difficulty formulating a method of solution: determining what steps to take to get from the given conditions to a final answer. While it is helpful at first for you (the instructor) to show them, it is bad for you to show them too often, lest they stop thinking for themselves and merely follow your lead. A teaching technique I have found very helpful is to have students come up to the board (alone or in teams) in front of class to write their problem-solving strategies for all the others to see. They don't have to actually do the math, but rather outline the steps they would take, in the order they would take them.

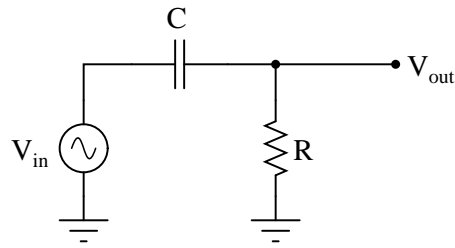
By having students outline their problem-solving strategies, everyone gets an opportunity to see multiple methods of solution, and you (the instructor) get to see how (and if!) your students are thinking. An especially good point to emphasize in these "open thinking" activities is how to check your work to see if any mistakes were made.



---

**Question 53**

Use algebraic substitution to generate an equation expressing the output voltage of the following circuit given the input voltage, the input frequency, the capacitor value, and the resistor value:



$$V_{out} =$$

[file 03818](#)

---

**Answer 53**

$$V_{out} = \frac{R V_{in}}{\sqrt{\left(\frac{1}{2\pi f C}\right)^2 + R^2}}$$

---

**Notes 53**

Discuss with your students what a good procedure might be for calculating the unknown values in this problem, and also how they might check their work.

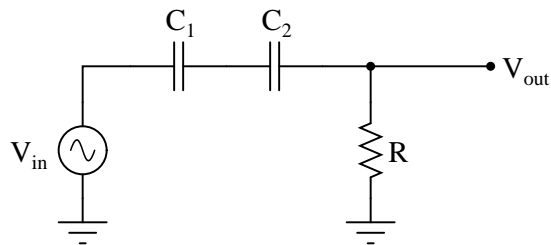
Students often have difficulty formulating a method of solution: determining what steps to take to get from the given conditions to a final answer. While it is helpful at first for you (the instructor) to show them, it is bad for you to show them too often, lest they stop thinking for themselves and merely follow your lead. A teaching technique I have found very helpful is to have students come up to the board (alone or in teams) in front of class to write their problem-solving strategies for all the others to see. They don't have to actually do the math, but rather outline the steps they would take, in the order they would take them.

By having students outline their problem-solving strategies, everyone gets an opportunity to see multiple methods of solution, and you (the instructor) get to see how (and if!) your students are thinking. An especially good point to emphasize in these "open thinking" activities is how to check your work to see if any mistakes were made.

---

Question 54

Use algebraic substitution to generate an equation expressing the output voltage of the following circuit given the input voltage, the input frequency, the capacitor value, and the resistor value:



$$V_{out} =$$

[file 03819](#)

---

Answer 54

$$V_{out} = \frac{R V_{in}}{\sqrt{\left(\frac{C_1 + C_2}{2\pi f C_1 C_2}\right)^2 + R^2}}$$

---

Notes 54

Discuss with your students what a good procedure might be for calculating the unknown values in this problem, and also how they might check their work.

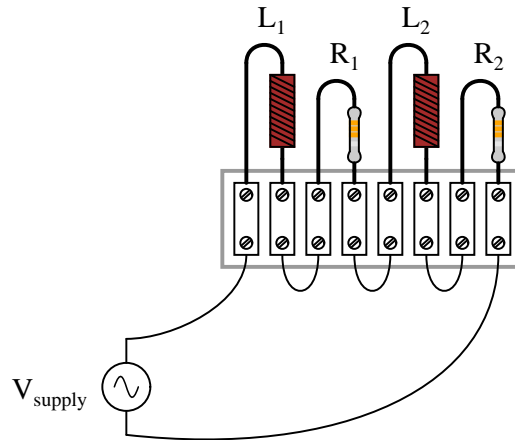
Students often have difficulty formulating a method of solution: determining what steps to take to get from the given conditions to a final answer. While it is helpful at first for you (the instructor) to show them, it is bad for you to show them too often, lest they stop thinking for themselves and merely follow your lead. A teaching technique I have found very helpful is to have students come up to the board (alone or in teams) in front of class to write their problem-solving strategies for all the others to see. They don't have to actually do the math, but rather outline the steps they would take, in the order they would take them.

By having students outline their problem-solving strategies, everyone gets an opportunity to see multiple methods of solution, and you (the instructor) get to see how (and if!) your students are thinking. An especially good point to emphasize in these "open thinking" activities is how to check your work to see if any mistakes were made.

---

Question 55

Determine the total current and all voltage drops in this circuit, stating your answers the way a multimeter would register them:



- $L_1 = 250 \text{ mH}$
- $L_2 = 60 \text{ mH}$
- $R_1 = 6.8 \text{ k}\Omega$
- $R_2 = 1.2 \text{ k}\Omega$
- $V_{supply} = 13.4 \text{ V RMS}$
- $f_{supply} = 6.5 \text{ kHz}$

Also, calculate the phase angle ( $\Theta$ ) between voltage and current in this circuit, and explain where and how you would connect an oscilloscope to measure that phase shift.

[file 01841](#)

---

Answer 55

- $I_{total} = 0.895 \text{ mA}$
- $V_{L1} = 9.14 \text{ V}$
- $V_{L2} = 2.19 \text{ V}$
- $V_{R1} = 6.08 \text{ V}$
- $V_{R2} = 1.07 \text{ V}$
- $\Theta = 57.71^\circ$

I suggest using a dual-trace oscilloscope to measure total voltage (across the supply terminals) and voltage drop across resistor  $R_2$ . Theoretically, measuring the voltage dropped by either resistor would be fine, but  $R_2$  works better for practical reasons (oscilloscope input lead grounding). Phase shift then could be measured either in the time domain or by a Lissajous figure analysis.

Some students many wonder what type of numerical result best corresponds to a multimeter's readings, if they do their calculations using complex numbers ("do I use polar or rectangular form, and if rectangular do I use the real or the imaginary part?"). The answers given for this question should clarify that point.

It is very important that students know how to apply this knowledge of AC circuit analysis to real-world situations. Asking students to determine how they would connect an oscilloscope to the circuit to measure  $\Theta$  is an exercise in developing their abstraction abilities between calculations and actual circuit scenarios.

Students often have difficulty formulating a method of solution: determining what steps to take to get from the given conditions to a final answer. While it is helpful at first for you (the instructor) to show them, it is bad for you to show them too often, lest they stop thinking for themselves and merely follow your lead. A teaching technique I have found very helpful is to have students come up to the board (alone or in teams) in front of class to write their problem-solving strategies for all the others to see. They don't have to actually do the math, but rather outline the steps they would take, in the order they would take them. The following is a sample of a written problem-solving strategy for analyzing a series resistive-reactive AC circuit:

**Step 1:** Calculate all reactances ( $X$ ).

**Step 2:** Draw an impedance triangle ( $Z ; R ; X$ ), solving for  $Z$

**Step 3:** Calculate circuit current using Ohm's Law:  $I = \frac{V}{Z}$

**Step 4:** Calculate series voltage drops using Ohm's Law:  $V = IZ$

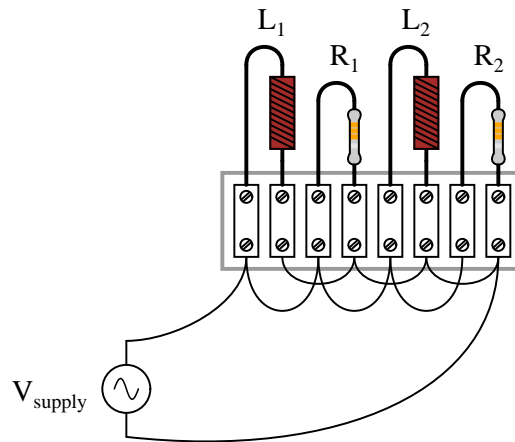
**Step 5:** Check work by drawing a voltage triangle ( $V_{total} ; V_1 ; V_2$ ), solving for  $V_{total}$

By having students outline their problem-solving strategies, everyone gets an opportunity to see multiple methods of solution, and you (the instructor) get to see how (and if!) your students are thinking. An especially good point to emphasize in these "open thinking" activities is how to check your work to see if any mistakes were made.

---

Question 56

Determine the total current and all component currents in this circuit, stating your answers the way a multimeter would register them:



- $L_1 = 1.2 \text{ H}$
- $L_2 = 650 \text{ mH}$
- $R_1 = 33 \text{ k}\Omega$
- $R_2 = 27 \text{ k}\Omega$
- $V_{supply} = 19.7 \text{ V RMS}$
- $f_{supply} = 4.5 \text{ kHz}$

Also, calculate the phase angle ( $\Theta$ ) between voltage and current in this circuit, and explain where and how you would connect an oscilloscope to measure that phase shift.

[file 01842](#)

---

Answer 56

- $I_{total} = 2.12 \text{ mA}$
- $I_{L1} = 581 \mu\text{A}$
- $I_{L2} = 1.07 \text{ mA}$
- $I_{R1} = 597 \mu\text{A}$
- $I_{R2} = 730 \mu\text{A}$
- $\Theta = 51.24^\circ$

Measuring  $\Theta$  with an oscilloscope requires the addition of a shunt resistor into this circuit, because oscilloscopes are (normally) only able to measure voltage, and there is no phase shift between any voltages in this circuit because all components are in parallel. I leave it to you to suggest where to insert the shunt resistor, what resistance value to select for the task, and how to connect the oscilloscope to the modified circuit.

Some students many wonder what type of numerical result best corresponds to a multimeter's readings, if they do their calculations using complex numbers ("do I use polar or rectangular form, and if rectangular do I use the real or the imaginary part?"). The answers given for this question should clarify that point.

It is very important that students know how to apply this knowledge of AC circuit analysis to real-world situations. Asking students to determine how they would connect an oscilloscope to the circuit to measure  $\Theta$  is an exercise in developing their abstraction abilities between calculations and actual circuit scenarios.

Students often have difficulty formulating a method of solution: determining what steps to take to get from the given conditions to a final answer. While it is helpful at first for you (the instructor) to show them, it is bad for you to show them too often, lest they stop thinking for themselves and merely follow your lead. A teaching technique I have found very helpful is to have students come up to the board (alone or in teams) in front of class to write their problem-solving strategies for all the others to see. They don't have to actually do the math, but rather outline the steps they would take, in the order they would take them. The following is a sample of a written problem-solving strategy for analyzing a series resistive-reactive AC circuit:

**Step 1:** Calculate all reactances ( $X$ ).

**Step 2:** Draw an impedance triangle ( $Z ; R ; X$ ), solving for  $Z$

**Step 3:** Calculate circuit current using Ohm's Law:  $I = \frac{V}{Z}$

**Step 4:** Calculate series voltage drops using Ohm's Law:  $V = IZ$

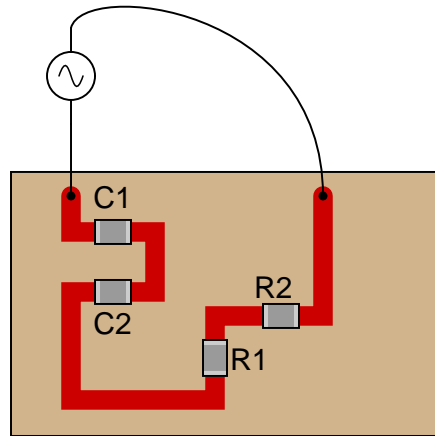
**Step 5:** Check work by drawing a voltage triangle ( $V_{total} ; V_1 ; V_2$ ), solving for  $V_{total}$

By having students outline their problem-solving strategies, everyone gets an opportunity to see multiple methods of solution, and you (the instructor) get to see how (and if!) your students are thinking. An especially good point to emphasize in these "open thinking" activities is how to check your work to see if any mistakes were made.

---

Question 57

Determine the total current and all voltage drops in this circuit, stating your answers the way a multimeter would register them:



- $C_1 = 125 \text{ pF}$
- $C_2 = 71 \text{ pF}$
- $R_1 = 6.8 \text{ k}\Omega$
- $R_2 = 1.2 \text{ k}\Omega$
- $V_{supply} = 20 \text{ V RMS}$
- $f_{supply} = 950 \text{ kHz}$

Also, calculate the phase angle ( $\Theta$ ) between voltage and current in this circuit, and explain where and how you would connect an oscilloscope to measure that phase shift.

[file 01851](#)

---

Answer 57

- $I_{total} = 2.269 \text{ mA}$
- $V_{C1} = 3.041 \text{ V}$
- $V_{C2} = 5.354 \text{ V}$
- $V_{R1} = 15.43 \text{ V}$
- $V_{R2} = 2.723 \text{ V}$
- $\Theta = -24.82^\circ$  (voltage lagging current)

I suggest using a dual-trace oscilloscope to measure total voltage (across the supply terminals) and voltage drop across resistor  $R_2$ . Theoretically, measuring the voltage dropped by either resistor would be fine, but  $R_2$  works better for practical reasons (oscilloscope input lead grounding). Phase shift then could be measured either in the time domain or by a Lissajous figure analysis.

Some students many wonder what type of numerical result best corresponds to a multimeter's readings, if they do their calculations using complex numbers ("do I use polar or rectangular form, and if rectangular do I use the real or the imaginary part?"). The answers given for this question should clarify that point.

It is very important that students know how to apply this knowledge of AC circuit analysis to real-world situations. Asking students to determine how they would connect an oscilloscope to the circuit to measure  $\Theta$  is an exercise in developing their abstraction abilities between calculations and actual circuit scenarios.

It is noteworthy that the low capacitances shown here approach parasitic capacitances between circuit board traces. In other words, whoever designs a circuit to operate at 950 kHz cannot simply place components at will on the board, but must consider the traces themselves to be circuit elements (both capacitive and inductive in nature!). The calculations used to obtain the given answers, of course, assume ideal conditions where the PC board is not considered to possess capacitance or inductance.

Students often have difficulty formulating a method of solution: determining what steps to take to get from the given conditions to a final answer. While it is helpful at first for you (the instructor) to show them, it is bad for you to show them too often, lest they stop thinking for themselves and merely follow your lead. A teaching technique I have found very helpful is to have students come up to the board (alone or in teams) in front of class to write their problem-solving strategies for all the others to see. They don't have to actually do the math, but rather outline the steps they would take, in the order they would take them. The following is a sample of a written problem-solving strategy for analyzing a series resistive-reactive AC circuit:

**Step 1:** Calculate all reactances ( $X$ ).

**Step 2:** Draw an impedance triangle ( $Z ; R ; X$ ), solving for  $Z$

**Step 3:** Calculate circuit current using Ohm's Law:  $I = \frac{V}{Z}$

**Step 4:** Calculate series voltage drops using Ohm's Law:  $V = IZ$

**Step 5:** Check work by drawing a voltage triangle ( $V_{total} ; V_1 ; V_2$ ), solving for  $V_{total}$

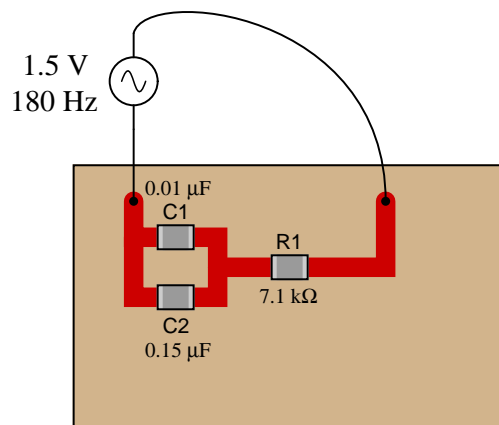
By having students outline their problem-solving strategies, everyone gets an opportunity to see multiple methods of solution, and you (the instructor) get to see how (and if!) your students are thinking. An especially good point to emphasize in these "open thinking" activities is how to check your work to see if any mistakes were made.



---

Question 58

Calculate the voltage drops across all components in this circuit, expressing them in complex (polar) form with magnitudes and phase angles each:



[file 01852](#)

---

Answer 58

$$V_{C1} = 0.921 \text{ V} \angle -52.11^\circ$$

$$V_{C2} = 0.921 \text{ V} \angle -52.11^\circ$$

$$V_{R1} = 1.184 \text{ V} \angle 37.90^\circ$$

Follow-up question: how much phase shift is there between the capacitors' voltage drop and the resistor's voltage drop? Explain why this value is what it is.

The first challenge of this question is for students to figure out how to reduce this series-parallel combination to something simpler. Fortunately, this is very easy to do if one remembers the properties of parallel capacitances.

Students may be surprised to discover the phase shift between  $V_C$  and  $V_R$  is the value it is. However, this should not remain a mystery. Discuss this with your class, taking time for all of them to understand why the voltage phasors of a resistor and a capacitor in a simple series circuit will always be orthogonal.

Students often have difficulty formulating a method of solution: determining what steps to take to get from the given conditions to a final answer. While it is helpful at first for you (the instructor) to show them, it is bad for you to show them too often, lest they stop thinking for themselves and merely follow your lead. A teaching technique I have found very helpful is to have students come up to the board (alone or in teams) in front of class to write their problem-solving strategies for all the others to see. They don't have to actually do the math, but rather outline the steps they would take, in the order they would take them. The following is a sample of a written problem-solving strategy for analyzing a series resistive-reactive AC circuit:

**Step 1:** Calculate all reactances ( $X$ ).

**Step 2:** Draw an impedance triangle ( $Z ; R ; X$ ), solving for  $Z$

**Step 3:** Calculate circuit current using Ohm's Law:  $I = \frac{V}{Z}$

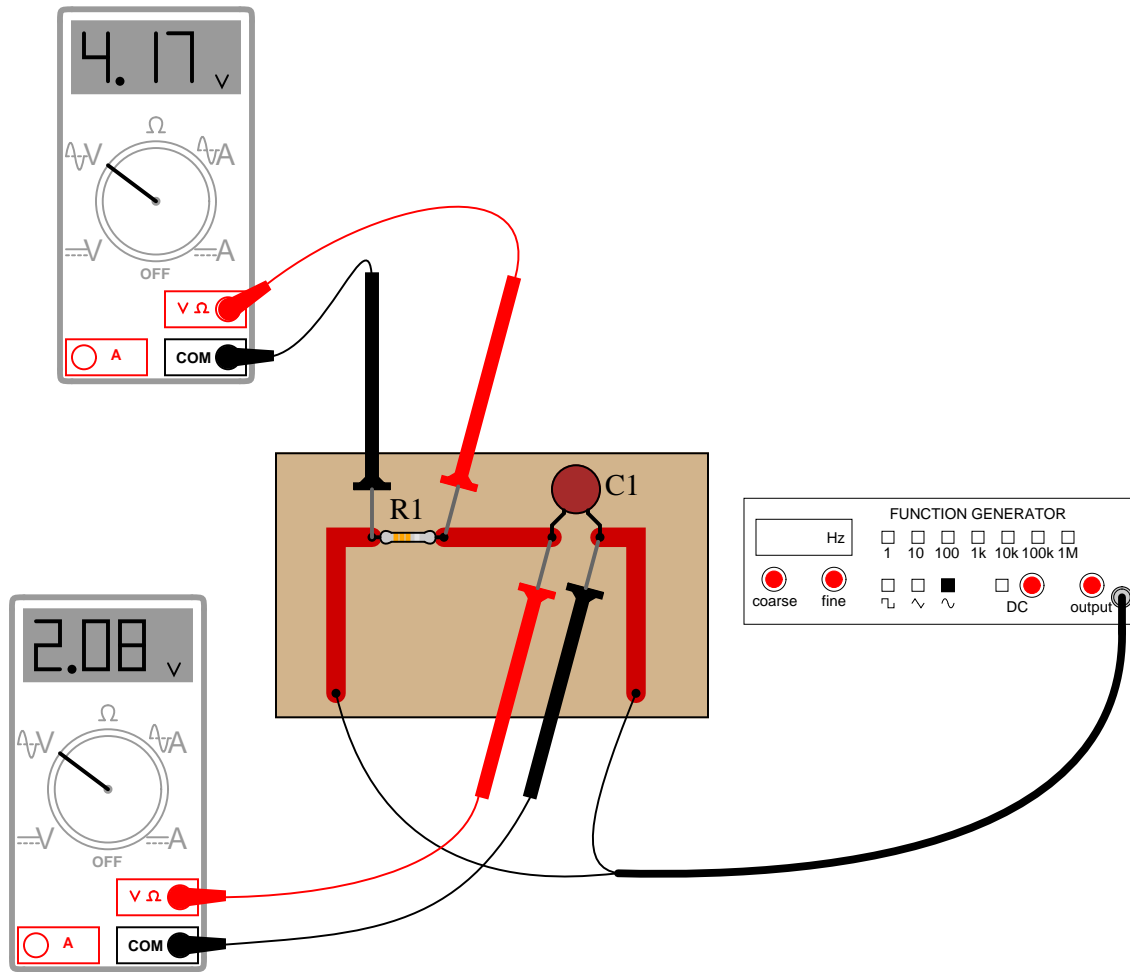
**Step 4:** Calculate series voltage drops using Ohm's Law:  $V = IZ$

**Step 5:** Check work by drawing a voltage triangle ( $V_{total} ; V_1 ; V_2$ ), solving for  $V_{total}$

By having students outline their problem-solving strategies, everyone gets an opportunity to see multiple methods of solution, and you (the instructor) get to see how (and if!) your students are thinking. An especially good point to emphasize in these "open thinking" activities is how to check your work to see if any mistakes were made.

Question 59

Determine the phase angle ( $\Theta$ ) of the current in this circuit, with respect to the supply voltage:



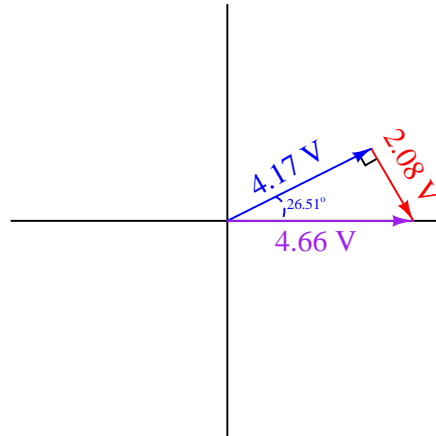
file 01853

---

Answer 59

$$\Theta = 26.51^\circ$$

Challenge question: explain how the following phasor diagram was determined for this problem:



---

Notes 59

This is an interesting question for a couple of reasons. First, students must determine how they will measure phase shift with just the two voltage indications shown by the meters. This may present a significant challenge for some. Discuss problem-solving strategies in class so that students understand how and why it is possible to determine  $\Theta$ .

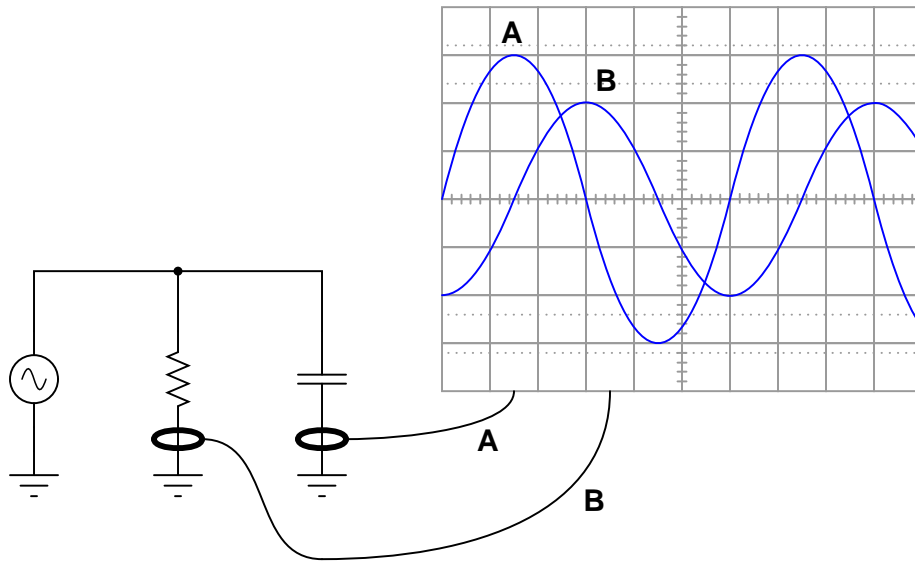
Secondly, this is an interesting question because it shows how something as abstract as phase angle can be measured with just a voltmeter – no oscilloscope required! Not only that, but we don't even have to know the component values either! Note that this technique works only for simple circuits.

A practical point to mention here is that multimeters have frequency limits which must be considered when taking measurements on electronic circuits. Some high-quality handheld digital meters have frequency limits of hundred of kilohertz, while others fail to register accurately at only a few thousand hertz. Unless we knew these two digital voltmeters were sufficient for measuring at the signal frequency, their indications would be useless to us.

---

Question 60

Calculate the total (source) current in this parallel RC circuit, based on the readings taken by the dual-trace oscilloscope (both of the inductive current probes show branch currents in units of 1 amp per division):



$I_{total} =$

[file 04065](#)

---

Answer 60

$I_{total} = 3.61$  amps peak or 2.55 amps RMS

---

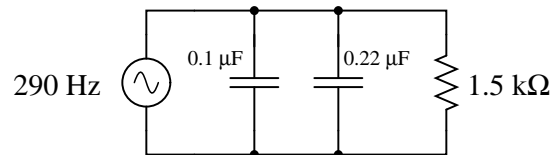
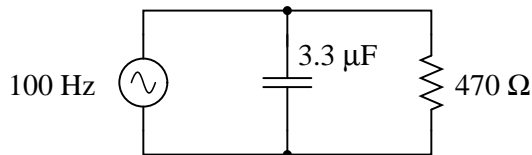
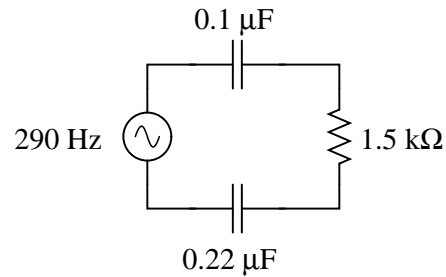
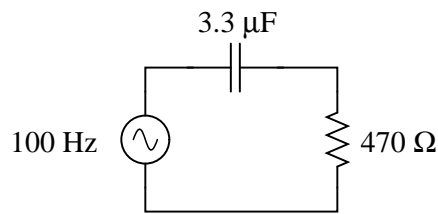
Notes 60

This is a really simple trigonometry problem, disguised by the necessity of having to interpret the oscilloscope display.

---

Question 61

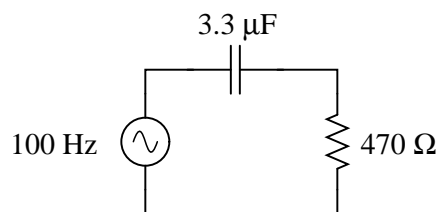
Calculate the total impedances (complete with phase angles) for each of the following capacitor-resistor circuits:



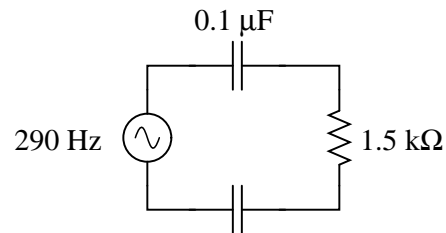
[file 02109](#)

---

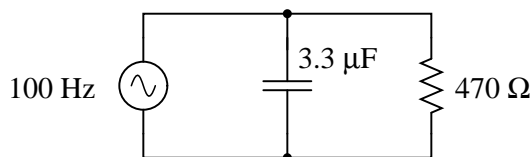
Answer 61



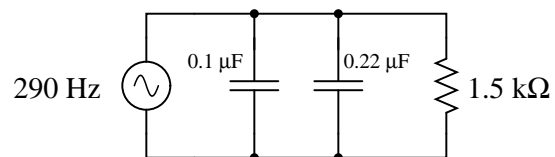
$$\mathbf{Z}_{\text{total}} = 673.4 \Omega \angle -45.74^\circ$$



$$\mathbf{Z}_{\text{total}} = 8.122 \text{ k}\Omega \angle -79.36^\circ$$



$$\mathbf{Z}_{\text{total}} = 336.6 \Omega \angle -44.26^\circ$$



$$\mathbf{Z}_{\text{total}} = 1.129 \text{ k}\Omega \angle -41.17^\circ$$

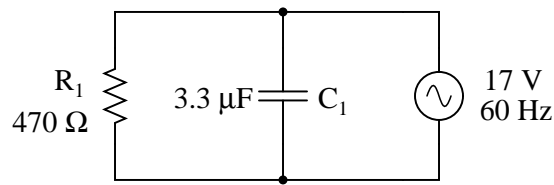
---

Notes 61

Have your students explain how they solved for each impedance, step by step. You may find different approaches to solving the same problem(s), and your students will benefit from seeing the diversity of solution techniques.

Question 62

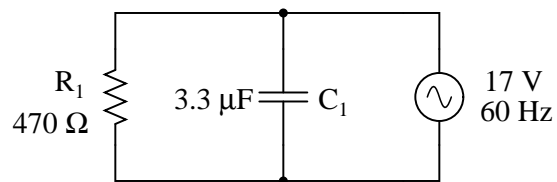
Complete the table of values for this circuit, representing all quantities in complex-number form (either polar or rectangular, your choice):



	$R_1$	$C_1$	Total
<b>V</b>			$17 \text{ V} \angle 0^\circ$
<b>I</b>			
<b>Z</b>			

[file 03611](#)

Answer 62



	$R_1$	$C_1$	Total
<b>V</b>	$17 \text{ V} \angle 0^\circ$	$17 \text{ V} \angle 0^\circ$	$17 \text{ V} \angle 0^\circ$
<b>I</b>	$36.17 \text{ mA} \angle 0^\circ$	$21.15 \text{ mA} \angle 90^\circ$	$41.9 \text{ mA} \angle 30.3^\circ$
<b>Z</b>	$470 \Omega \angle 0^\circ$	$803.8 \Omega \angle -90^\circ$	$405.7 \Omega \angle -30.3^\circ$

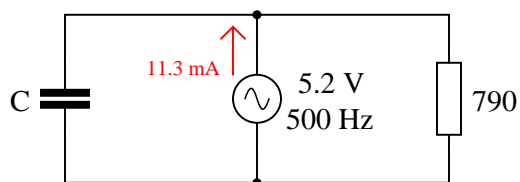
Notes 62

Ask your students to share their problem-solving techniques for this question: how they solved for each parameter and in what order they performed the calculations.

---

Question 63

Determine the size of capacitor (in Farads) necessary to create a total current of 11.3 mA in this parallel RC circuit:



file 02110

---

Answer 63

$$C = 562.2 \text{ nF}$$

---

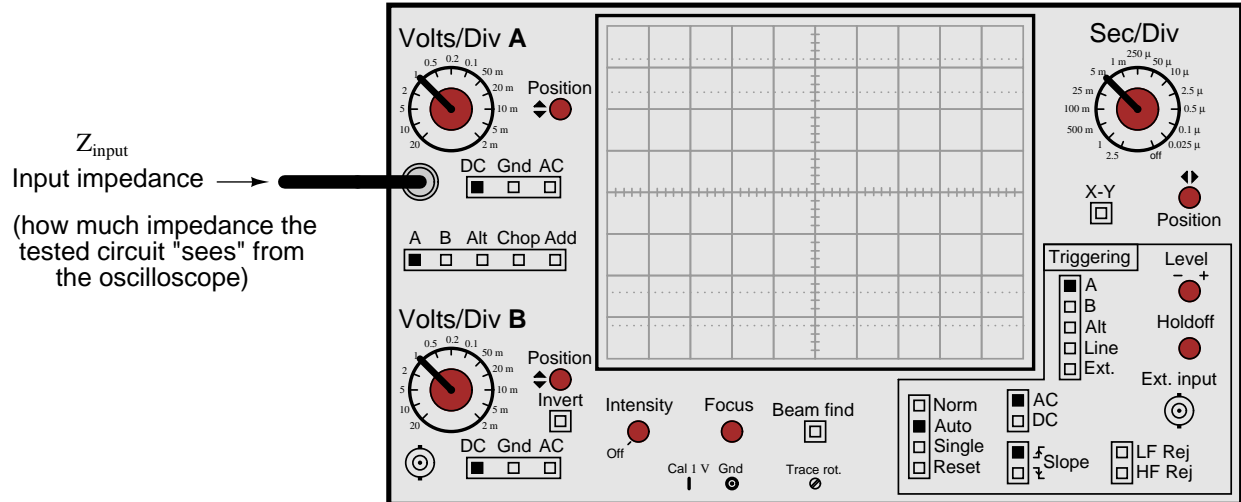
Notes 63

Have your students explain how they solved for each impedance, step by step. You may find different approaches to solving the same problem(s), and your students will benefit from seeing the diversity of solution techniques.

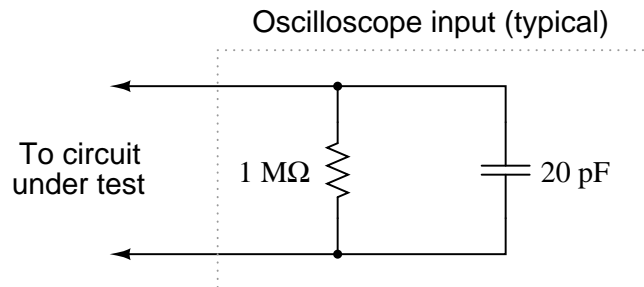


### Question 64

The *input impedance* of an electrical test instrument is a very important parameter in some applications, because of how the instrument may *load* the circuit being tested. Oscilloscopes are no different from voltmeters in this regard:



Typical input impedance for an oscilloscope is 1 M $\Omega$  of resistance, in parallel with a small amount of capacitance. At low frequencies, the reactance of this capacitance is so high that it may be safely ignored. At high frequencies, though, it may become a substantial load to the circuit under test:



Calculate how many ohms of impedance this oscilloscope input (equivalent circuit shown in the above schematic) will impose on a circuit with a signal frequency of 150 kHz.

[file 02111](#)

### Answer 64

$$Z_{input} = 52.98 \text{ k}\Omega \text{ at } 150 \text{ kHz}$$

Follow-up question: what are the respective input impedances for ideal voltmeters and ideal ammeters? Explain why each ideal instrument needs to exhibit these impedances in order to accurately measure voltage and current (respectively) with the least "impact" to the circuit under test.

### Notes 64

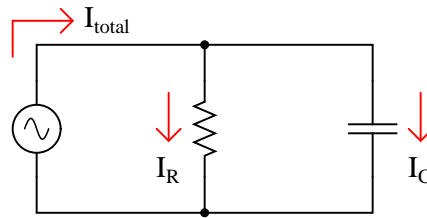
Mention to your students that this capacitive loading effect only gets worse when a cable is attached to the oscilloscope input. The calculation performed for this question is only for the *input* of the oscilloscope itself, not including whatever capacitance may be included in the test probe cable!

This is one of the reasons why  $\times 10$  probes are used with oscilloscopes: to minimize the loading effect on the tested circuit.

---

Question 65

If the source voltage in this circuit is assumed to be the phase reference (that is, the voltage is defined to be at an angle of 0 degrees), determine the relative phase angles of each current in this parallel circuit:



- $\Theta_{I(R)} =$
- $\Theta_{I(C)} =$
- $\Theta_{I(total)} =$

file 02112

---

Answer 65

- $\Theta_{I(R)} = 0^\circ$
- $\Theta_{I(C)} = 90^\circ$
- $\Theta_{I(total)} =$  some positive angle between  $0^\circ$  and  $90^\circ$ , exclusive

---

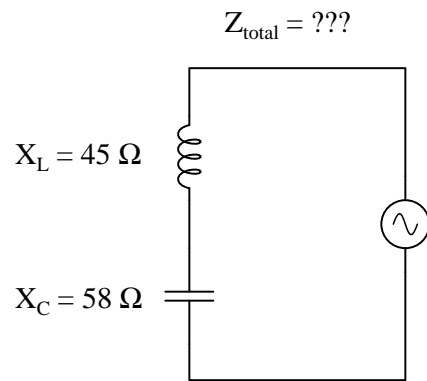
Notes 65

Some students will be confused about the positive phase angles, since this is a capacitive circuit and they have learned to associate negative angles with capacitors. It is important for these students to realize, though, that the negative angles they immediately associate with capacitors are in reference to *impedance* and not necessarily to other variables in the circuit!

---

Question 66

Capacitors and inductors are complementary components – both conceptually and mathematically, they seem to be almost exact opposites of each other. Calculate the total impedance of this series-connected inductor and capacitor network:



[file 00851](#)

---

Answer 66

$$\mathbf{Z}_{\text{total}} = 13 \Omega \angle -90^\circ$$

Follow-up question: does this circuit "appear" to be inductive or capacitive from the source's point of view?

---

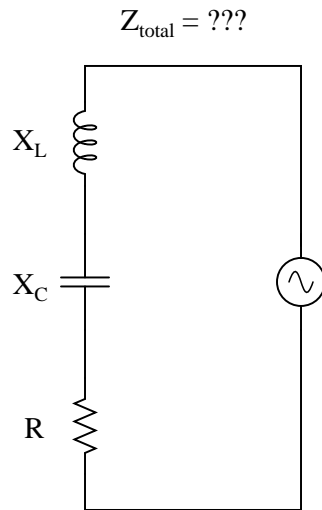
Notes 66

Here, the complementary nature of inductive and capacitive reactances is plain to see: they subtract in series. Challenge your students by asking them what the total impedance of this circuit would be if the two reactances were equal.

---

Question 67

Write an equation that solves for the impedance of this series circuit. The equation need not solve for the phase angle between voltage and current, but merely provide a scalar figure for impedance (in ohms):



[file 00852](#)

---

Answer 67

$$Z_{total} = \sqrt{R^2 + (X_L - X_C)^2}$$

---

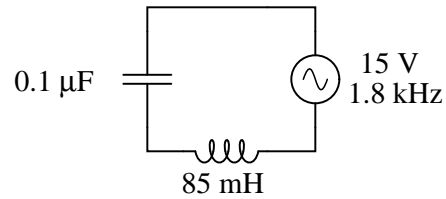
Notes 67

Ask your students why one of the reactance terms under the radicand is positive and the other is negative. The way this equation is written, does it matter which term is negative? As your students if we would obtain the same answer if it were written as  $Z_{total} = \sqrt{R^2 + (X_C - X_L)^2}$  instead. Challenge them to answer this question without using a calculator!

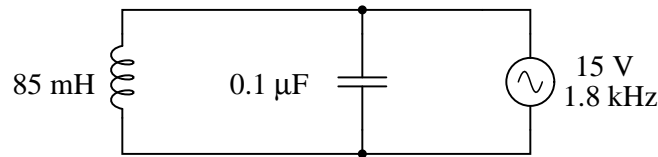
---

Question 68

Is this circuit's overall behavior capacitive or inductive? In other words, from the perspective of the AC voltage source, does it "appear" as though a capacitor is being powered, or an inductor?



Now, suppose we take these same components and re-connect them in parallel rather than series. Does this change the circuit's overall "appearance" to the source? Does the source now "see" an equivalent capacitor or an equivalent inductor? Explain your answer.



[file 01554](#)

---

Answer 68

Overall, the first (series) circuit's behavior is *inductive*. The second (parallel) circuit's behavior, though, is *capacitive*.

Follow-up question: which component "dominates" the behavior of a series LC circuit, the one with the least reactance or the one with the greatest reactance? Which component "dominates" the behavior of a parallel LC circuit, the one with the least reactance or the one with the greatest reactance?

As usual, the real point of this question is to get students to think about the analytical procedure(s) they use, and to engage their minds in problem-solving behavior. Ask them *why* they think the circuits behave inductively or capacitively.

Students often have difficulty formulating a method of solution: determining what steps to take to get from the given conditions to a final answer. While it is helpful at first for you (the instructor) to show them, it is bad for you to show them too often, lest they stop thinking for themselves and merely follow your lead. A teaching technique I have found very helpful is to have students come up to the board (alone or in teams) in front of class to write their problem-solving strategies for all the others to see. They don't have to actually do the math, but rather outline the steps they would take, in the order they would take them. The following is a sample of a written problem-solving strategy for analyzing a series resistive-reactive AC circuit:

**Step 1:** Calculate all reactances ( $X$ ).

**Step 2:** Draw an impedance triangle ( $Z ; R ; X$ ), solving for  $Z$

**Step 3:** Calculate circuit current using Ohm's Law:  $I = \frac{V}{Z}$

**Step 4:** Calculate series voltage drops using Ohm's Law:  $V = IZ$

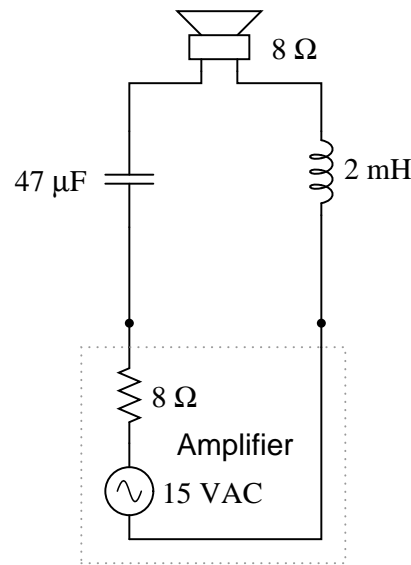
**Step 5:** Check work by drawing a voltage triangle ( $V_{total} ; V_1 ; V_2$ ), solving for  $V_{total}$

By having students outline their problem-solving strategies, everyone gets an opportunity to see multiple methods of solution, and you (the instructor) get to see how (and if!) your students are thinking. An especially good point to emphasize in these "open thinking" activities is how to check your work to see if any mistakes were made.

---

Question 69

Calculate the voltage dropped across the inductor, the capacitor, and the 8-ohm speaker in this sound system at the following frequencies, given a constant source voltage of 15 volts:



- $f = 200$  Hz
- $f = 550$  Hz
- $f = 900$  Hz

Regard the speaker as nothing more than an 8-ohm resistor.  
[file 00640](#)

---

Answer 69

- $f = 200$  Hz ;  $V_L = 1.750$  V ;  $V_C = 11.79$  V ;  $V_{speaker} = 5.572$  V
- $f = 550$  Hz ;  $V_L = 6.472$  V ;  $V_C = 5.766$  V ;  $V_{speaker} = 7.492$  V
- $f = 900$  Hz ;  $V_L = 9.590$  V ;  $V_C = 3.763$  V ;  $V_{speaker} = 6.783$  V

This circuit is known as a *midrange crossover* in stereo system design.

---

Notes 69

This is an interesting circuit to analyze. Note how, out of the three frequency points we performed calculations at, the speaker's voltage is greatest at the *middle* frequency. Note also how the inductor and capacitor drop very disparate amounts of voltage at the high and low frequencies. Discuss this circuit's behavior with your students, and ask them what practical function this circuit performs.

Students often have difficulty formulating a method of solution: determining what steps to take to get from the given conditions to a final answer. While it is helpful at first for you (the instructor) to show them, it is bad for you to show them too often, lest they stop thinking for themselves and merely follow your lead. A teaching technique I have found very helpful is to have students come up to the board (alone or in teams) in front of class to write their problem-solving strategies for all the others to see. They don't have to actually do the math, but rather outline the steps they would take, in the order they would take them. The following is a sample of a written problem-solving strategy for analyzing a series resistive-reactive AC circuit:

**Step 1:** Calculate all reactances ( $X$ ).

**Step 2:** Draw an impedance triangle ( $Z$  ;  $R$  ;  $X$ ), solving for  $Z$

**Step 3:** Calculate circuit current using Ohm's Law:  $I = \frac{V}{Z}$

**Step 4:** Calculate series voltage drops using Ohm's Law:  $V = IZ$

**Step 5:** Check work by drawing a voltage triangle ( $V_{total}$  ;  $V_1$  ;  $V_2$ ), solving for  $V_{total}$

By having students outline their problem-solving strategies, everyone gets an opportunity to see multiple methods of solution, and you (the instructor) get to see how (and if!) your students are thinking. An especially good point to emphasize in these "open thinking" activities is how to check your work to see if any mistakes were made.



---

Question 70

Suppose you are building a circuit and you need an impedance of  $1500 \Omega \angle -41^\circ$  at a frequency of 600 Hz. What combination of components could you connect together in series to achieve this precise impedance?  
[file 00644](#)

---

Answer 70

A  $1132.1 \Omega$  resistor connected in series with a  $269.6 \text{ nF}$  capacitor would suffice.

---

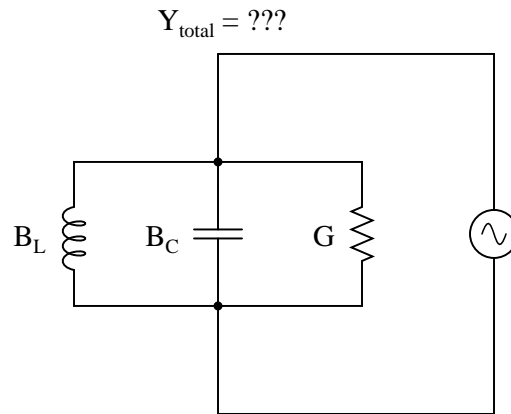
Notes 70

As usual, the most important part of your students' answers is not the figures themselves, but rather their methods of solution. Students should be very familiar with how to calculate the impedance of a series-connected group of components, but calculating component values from an impedance figure may be a challenge to some.

---

Question 71

Write an equation that solves for the admittance of this parallel circuit. The equation need not solve for the phase angle between voltage and current, but merely provide a scalar figure for admittance (in siemens):



[file 00854](#)

---

Answer 71

$$Y_{\text{total}} = \sqrt{G^2 + (B_L - B_C)^2}$$

---

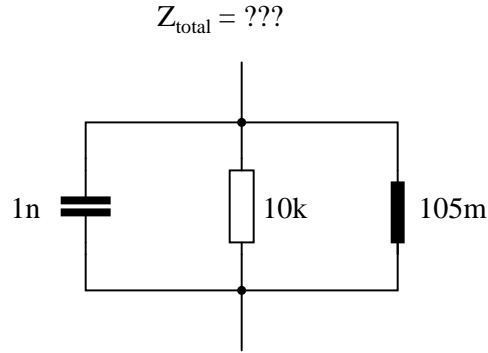
Notes 71

Ask your students why one of the reactance terms under the radicand is positive and the other is negative. The way this equation is written, does it matter which term is negative? Ask your students if we would obtain the same answer if the equation were written as  $Y_{\text{total}} = \sqrt{G^2 + (B_C - B_L)^2}$  instead. Challenge them to answer this question without using a calculator!

---

Question 72

Calculate the total impedance of this parallel network, given a signal frequency of 12 kHz:



[file 01541](#)

---

Answer 72

$$\mathbf{Z}_{\text{total}} = 8.911 \text{ k}\Omega \angle 26.98^\circ$$

---

Notes 72

Ask your students how they obtained the phase angle for this circuit. There is more than one way to calculate this!

Students often have difficulty formulating a method of solution: determining what steps to take to get from the given conditions to a final answer. While it is helpful at first for you (the instructor) to show them, it is bad for you to show them too often, lest they stop thinking for themselves and merely follow your lead. A teaching technique I have found very helpful is to have students come up to the board (alone or in teams) in front of class to write their problem-solving strategies for all the others to see. They don't have to actually do the math, but rather outline the steps they would take, in the order they would take them. The following is a sample of a written problem-solving strategy for analyzing a series resistive-reactive AC circuit:

**Step 1:** Calculate all reactances ( $X$ ).

**Step 2:** Draw an impedance triangle ( $Z$  ;  $R$  ;  $X$ ), solving for  $Z$

**Step 3:** Calculate circuit current using Ohm's Law:  $I = \frac{V}{Z}$

**Step 4:** Calculate series voltage drops using Ohm's Law:  $V = IZ$

**Step 5:** Check work by drawing a voltage triangle ( $V_{\text{total}}$  ;  $V_1$  ;  $V_2$ ), solving for  $V_{\text{total}}$

By having students outline their problem-solving strategies, everyone gets an opportunity to see multiple methods of solution, and you (the instructor) get to see how (and if!) your students are thinking. An especially good point to emphasize in these "open thinking" activities is how to check your work to see if any mistakes were made.

---

### Question 73

An AC electric motor operating under loaded conditions draws a current of 11 amps (RMS) from the 120 volt (RMS) 60 Hz power lines. The measured phase shift between voltage and current for this motor is  $34^\circ$ , with voltage leading current.

Determine the equivalent parallel combination of resistance ( $R$ ) and inductance ( $L$ ) that is electrically equivalent to this operating motor.

[file 01542](#)

---

### Answer 73

$$R_{parallel} = 13.16 \Omega$$

$$L_{parallel} = 51.75 \text{ mH}$$

Challenge question: in the parallel LR circuit, the resistor will dissipate a lot of energy in the form of heat. Does this mean that the electric motor, which is electrically equivalent to the LR network, will dissipate the same amount of heat? Explain why or why not.

---

### Notes 73

If students get stuck on the challenge question, remind them that an electric motor does mechanical *work*, which requires energy.

---

Question 74

Calculate the impedance of a 145 mH inductor connected in series with 750  $\Omega$  resistor at a frequency of 1 kHz, then determine the necessary resistor and inductor values to create the exact same total impedance in a *parallel* configuration.

[file 00645](#)

---

Answer 74

$$\mathbf{Z}_{\text{total}} = 1.18 \text{ k}\Omega \angle 50.54^\circ$$

If connected in parallel: R = 1.857 k $\Omega$  ; L = 243.3 mH.

Hint: if you are having difficulty figuring out where to start in answering this question, consider the fact that these two circuits, if equivalent in total impedance, will draw the exact same amount of current from a common AC source at 1 kHz.

---

Notes 74

This is an interesting question, requiring the student to think creatively about how to convert one configuration of circuit into another, while maintaining the same total effect. As usual, the real purpose of a question like this is to develop problem-solving strategies, rather than to simply obtain an answer.

**Don't just sit there! Build something!!**

Learning to mathematically analyze circuits requires much study and practice. Typically, students practice by working through lots of sample problems and checking their answers against those provided by the textbook or the instructor. While this is good, there is a much better way.

You will learn much more by actually *building and analyzing real circuits*, letting your test equipment provide the "answers" instead of a book or another person. For successful circuit-building exercises, follow these steps:

1. Carefully measure and record all component values prior to circuit construction.
2. Draw the schematic diagram for the circuit to be analyzed.
3. Carefully build this circuit on a breadboard or other convenient medium.
4. Check the accuracy of the circuit's construction, following each wire to each connection point, and verifying these elements one-by-one on the diagram.
5. Mathematically analyze the circuit, solving for all voltage and current values.
6. Carefully measure all voltages and currents, to verify the accuracy of your analysis.
7. If there are any substantial errors (greater than a few percent), carefully check your circuit's construction against the diagram, then carefully re-calculate the values and re-measure.

For AC circuits where inductive and capacitive reactances (impedances) are a significant element in the calculations, I recommend high quality (high-Q) inductors and capacitors, and powering your circuit with low frequency voltage (power-line frequency works well) to minimize parasitic effects. If you are on a restricted budget, I have found that inexpensive electronic musical keyboards serve well as "function generators" for producing a wide range of audio-frequency AC signals. Be sure to choose a keyboard "voice" that closely mimics a sine wave (the "panflute" voice is typically good), if sinusoidal waveforms are an important assumption in your calculations.

As usual, avoid very high and very low resistor values, to avoid measurement errors caused by meter "loading". I recommend resistor values between 1 k $\Omega$  and 100 k $\Omega$ .

One way you can save time and reduce the possibility of error is to begin with a very simple circuit and incrementally add components to increase its complexity after each analysis, rather than building a whole new circuit for each practice problem. Another time-saving technique is to re-use the same components in a variety of different circuit configurations. This way, you won't have to measure any component's value more than once.

[file 00605](#)

---

Answer 75

Let the electrons themselves give you the answers to your own "practice problems"!

It has been my experience that students require much practice with circuit analysis to become proficient. To this end, instructors usually provide their students with lots of practice problems to work through, and provide answers for students to check their work against. While this approach makes students proficient in circuit theory, it fails to fully educate them.

Students don't just need mathematical practice. They also need real, hands-on practice building circuits and using test equipment. So, I suggest the following alternative approach: students should *build* their own "practice problems" with real components, and try to mathematically predict the various voltage and current values. This way, the mathematical theory "comes alive," and students gain practical proficiency they wouldn't gain merely by solving equations.

Another reason for following this method of practice is to teach students *scientific method*: the process of testing a hypothesis (in this case, mathematical predictions) by performing a real experiment. Students will also develop real troubleshooting skills as they occasionally make circuit construction errors.

Spend a few moments of time with your class to review some of the "rules" for building circuits before they begin. Discuss these issues with your students in the same Socratic manner you would normally discuss the worksheet questions, rather than simply telling them what they should and should not do. I never cease to be amazed at how poorly students grasp instructions when presented in a typical lecture (instructor monologue) format!

An excellent way to introduce students to the mathematical analysis of real circuits is to have them first determine component values (L and C) from measurements of AC voltage and current. The simplest circuit, of course, is a single component connected to a power source! Not only will this teach students how to set up AC circuits properly and safely, but it will also teach them how to measure capacitance and inductance without specialized test equipment.

A note on reactive components: use high-quality capacitors and inductors, and try to use low frequencies for the power supply. Small step-down power transformers work well for inductors (at least two inductors in one package!), so long as the voltage applied to any transformer winding is less than that transformer's rated voltage for that winding (in order to avoid saturation of the core).

A note to those instructors who may complain about the "wasted" time required to have students build real circuits instead of just mathematically analyzing theoretical circuits:

*What is the purpose of students taking your course?*

If your students will be working with real circuits, then they should learn on real circuits whenever possible. If your goal is to educate theoretical physicists, then stick with abstract analysis, by all means! But most of us plan for our students to do something in the real world with the education we give them. The "wasted" time spent building real circuits will pay huge dividends when it comes time for them to apply their knowledge to practical problems.

Furthermore, having students build their own practice problems teaches them how to perform *primary research*, thus empowering them to continue their electrical/electronics education autonomously.

In most sciences, realistic experiments are much more difficult and expensive to set up than electrical circuits. Nuclear physics, biology, geology, and chemistry professors would just love to be able to have their students apply advanced mathematics to real experiments posing no safety hazard and costing less than a textbook. They can't, but you can. Exploit the convenience inherent to your science, and *get those students of yours practicing their math on lots of real circuits!*