

Traditional Christmas tunes performance at The Leopold

13 December 2018 --- (version 12 Dec 2018)

5:45 PM set up between upper lobby and ballroom, then move into upper lobby at 6:00 PM

"The Gooding Carol" (energetic, 3x All)



"Good Christian Men Rejoice" (energetic, 3x All)



"Silent Night" (slow; 1st All, 2nd Bill guitar solo, 3rd All)



"Angels We Have Heard On High" (energetic; 1st Nathan and Tony duet, 2nd Val and Chuck and Bill trio, 3rd/4th All)



"Bring A Torch, Jeanette Isabella" (slow; 1st All, 2nd Tony and Bill duet, 3rd All)



"Joseph Dearest, Joseph Mine" (slow; 3x All --- DON'T FORGET THE FINALE!!)



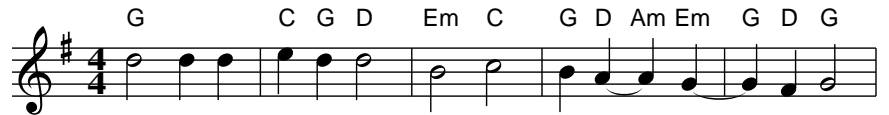
"The Bottom Of The Punch Bowl"
(medium tempo, with swung eighth notes; 1st and 2nd All with repeats [AABB,AABB] then 3rd All without repeats [AB])



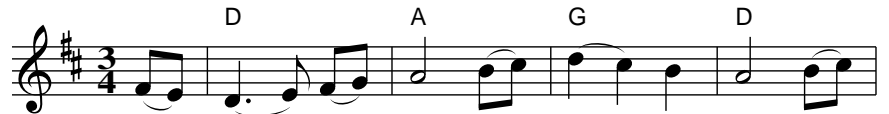
"In The Bleak Midwinter" (slow; 1st Donna solo, 2nd and 3rd All)



"Lo How A Rose Eer Blooming"
(slow; 1st Donna solo, 2nd and 3rd All)



"The First Noel" (slow; 1st Bill fingerpicking melody with quiet accompaniment, 2nd/3rd All)



Announce last tune before intermission

"Deck The Halls" (energetic; 3x All)



7:00 PM – 7:15 PM Intermission

*"The Boar's Head Carol" (energetic;
3x All)*

Musical notation for "The Boar's Head Carol" in G major, 4/4 time. The melody consists of eight measures. Chords are indicated above the staff: D, D, G, A, D.

"Ding! Dong! Merrily On High" (energetic; 3x All)

Musical notation for "Ding! Dong! Merrily On High" in G major, 4/4 time. The melody consists of six measures. Chords are indicated above the staff: D, A, D, G, AsusA7, D.

*"Masters In This Hall" (energetic; 1st
Tony vibes melody and Donna violin
drone, 2nd All join with Val and
Nathan doing harmony and chordal
instruments and Donna driving
rhythm, 3rd All)*

Musical notation for "Masters In This Hall" in G major, 6/8 time. The melody consists of four measures. Chords are indicated above the staff: Em, Em, Em, Em.

"The Golden Carol Of The Wisemen" (energetic; 2x All)

Musical notation for "The Golden Carol Of The Wisemen" in G major, 6/8 time. The melody consists of four measures. Chords are indicated above the staff: Em, Em, B, Em.

"On Christmas Day In The Morning" (energetic; 3x All)

Musical notation for "On Christmas Day In The Morning" in G major, 6/8 time. The melody consists of four measures. Chords are indicated above the staff: G, G, G, D.

*"The Coventry Carol" (slow;
Tony/Val vibes/violin duet: 2x
melody unison, 1x interlude, 2x
melody/harmony, 1x melody unison
rpt last 4 measures ending on G)*

Musical notation for "The Coventry Carol" in G minor, 3/4 time. The melody consists of five measures. Chords are indicated above the staff: Gm, D, Gm, Cm, D.

"Greensleeves" (slow; 2x All)

Musical notation for "Greensleeves" (slow; 2x All). The piece is in 3/4 time and G major. The melody consists of four measures: G4 (quarter), A4-B4 (quarter), C5 (quarter), B4-A4 (quarter), G4 (quarter), F#4 (quarter), E4 (quarter), D4 (quarter), C4 (quarter), B3 (quarter), A3 (quarter), G3 (quarter). Chords are indicated above the staff: Am (under G4), C (under C5), G (under G4), and G (under G4).

"Greensleeves Jig" (energetic; Donna and Tony play first "A" part to simplify the transition, then rest join on second "A" part playing whole tune just 1x)

Musical notation for "Greensleeves Jig". The piece is in 6/8 time and G major. The melody consists of eight measures: G4 (quarter), A4-B4 (eighths), C5 (quarter), B4-A4 (eighths), G4 (quarter), F#4 (quarter), E4 (quarter), D4 (quarter), C4 (quarter), B3 (quarter), A3 (quarter), G3 (quarter).

"The Sussex Carol" ("ice-skating" tempo, 4-part harmony; 1st Chuck and Bill duet, 2nd Nathan joins on voice 2 while Tony and Fritz join on melody, 3rd Diane and Donna join on voice 3 while Mary joins on melody, 4th Val joins on voice 4, 5th All)

Musical notation for "The Sussex Carol" (4-part harmony). The piece is in 3/4 time and G major. The melody consists of eight measures: G4 (quarter), A4-B4 (quarter), C5 (quarter), B4-A4 (quarter), G4 (quarter), F#4 (quarter), E4 (quarter), D4 (quarter), C4 (quarter), B3 (quarter), A3 (quarter), G3 (quarter). Chords are indicated above the staff: G (under G4), C (under C5), G (under G4), D (under D4), G (under G4), C (under C5), D (under D4), and G (under G4).

"I Have A Little Dreydl" (medium, building speed; 1st All melody, 2nd speed up and add harmony, 3rd speed up again, 4th speed up again!)

Musical notation for "I Have A Little Dreydl". The piece is in 4/4 time and C major. The melody consists of four measures: C4 (quarter), D4-E4 (quarter), F4-G4 (quarter), A4 (quarter), G4 (quarter), F4-E4 (quarter), D4 (quarter), C4 (quarter), C4 (quarter), D4-E4 (quarter), F4-G4 (quarter), A4 (quarter), G4 (quarter), F4-E4 (quarter), D4 (quarter), C4 (quarter). Chords are indicated above the staff: C (under C4), C (under C4), C (under C4), and G (under G4).

"O Come, O Come, Emmanuel"
(slow; 1st Tony solo vibes with middle crescendo, 2nd All with all crescendos played)

Musical notation for "O Come, O Come, Emmanuel" in G major, 4/4 time. The melody is written on a single staff with a treble clef and a key signature of one sharp (F#). The notes are: G4 (quarter), A4 (quarter), B4 (quarter), G4 (quarter), F#4 (quarter), E4 (quarter), D4 (half). Chords are indicated above the staff: Em (under G), G (under A), Am (under B), D (under G), G (under F#), and D (under E).

"God Rest Ye Merry Gentlemen"
(slow; 2x All)

Musical notation for "God Rest Ye Merry Gentlemen" in G major, 4/4 time. The melody is written on a single staff with a treble clef and a key signature of one sharp (F#). The notes are: G4 (quarter), A4 (quarter), B4 (quarter), G4 (quarter), F#4 (quarter), E4 (quarter), D4 (half), C4 (quarter), B3 (quarter), A3 (quarter), G4 (quarter). Chords are indicated above the staff: Em (under G), Em (under A), Em (under B), and B (under G).

"Away In A Manger", English (slow; 1st Tony solo psaltery English + American, 2nd and 3rd All alternating English + American)

Musical notation for "Away In A Manger" (English version) in G major, 3/4 time. The melody is written on a single staff with a treble clef and a key signature of one sharp (F#). The notes are: G4 (quarter), A4 (quarter), B4 (quarter), G4 (quarter), F#4 (quarter), E4 (quarter), D4 (half), C4 (quarter), B3 (quarter), A3 (quarter), G4 (quarter). Chords are indicated above the staff: G (under G), Em (under A), Bm (under B), and C (under G).

"Away In A Manger", American (slow; see instructions above)

Musical notation for "Away In A Manger" (American version) in G major, 3/4 time. The melody is written on a single staff with a treble clef and a key signature of one sharp (F#). The notes are: G4 (quarter), A4 (quarter), B4 (quarter), G4 (quarter), F#4 (quarter), E4 (quarter), D4 (half), C4 (quarter), B3 (quarter), A3 (quarter), G4 (quarter). Chords are indicated above the staff: G (under G), G (under A), C (under B), and G (under G).

8:00 PM End of Performance!

(Bow, sign autographs, launch world Slug Jam tour, bask in fame and fortune)