

DAILY COLLECTION OF MARITIME PRESS CLIPPINGS



Special Report *** COLLECTION OF MARITIME PRESS CLIPPINGS *** Special Report
By : Piet Sinke

YACHT EXPRESS



Photo : Piet Sinke ©

Last Friday saw the arrival in Rotterdam - Waalhaven of Dockwise latest newbuilding, the purpose built **YACHT EXPRESS**, which sailed on her maiden voyage, loaded with 4 inland water barges from Nantong (China) to Rotterdam.



The specially designed yacht carrier **YACHT EXPRESS** is built at the Yantai Raffles shipyard in China under yard number YRS 2004-178, and is semi-submersible in order to maintain the unique float-on/float-off loading method. The **yacht carrier** is having a length of 209 meter and a beam of 32.2 meter. The yachts can be safely accommodated between the spray covers in the dock bay, which measures a deck space of 165 meter in length and 31 meter in width. With a deck space of 5,115 square meters **DYT** is able to transport more yachts in one voyage.

DAILY COLLECTION OF MARITIME PRESS CLIPPINGS



Photo : Dockwise Yacht Transport ©

The launch of the **YACHT EXPRESS** was a major milestone in the development of the yacht transport industry. On January 15th 2007 the **YACHT EXPRESS** was skidded from its construction berth ashore, where it has been built since September 2005, onto four connected floating submersible barges. The skidding process was completed within 6 hours. On January 19th the barges were submersed and the **YACHT EXPRESS** was floated off at high tide and moored alongside the construction berth for further outfitting and commissioning.



capacity of 100 cu.m/h at 80 m head or 210 cu.m/h at 30 m head; an emergency fire pump of 72 cu.m/h at 70 m head; and a 200 cu.m/h ejector pump.

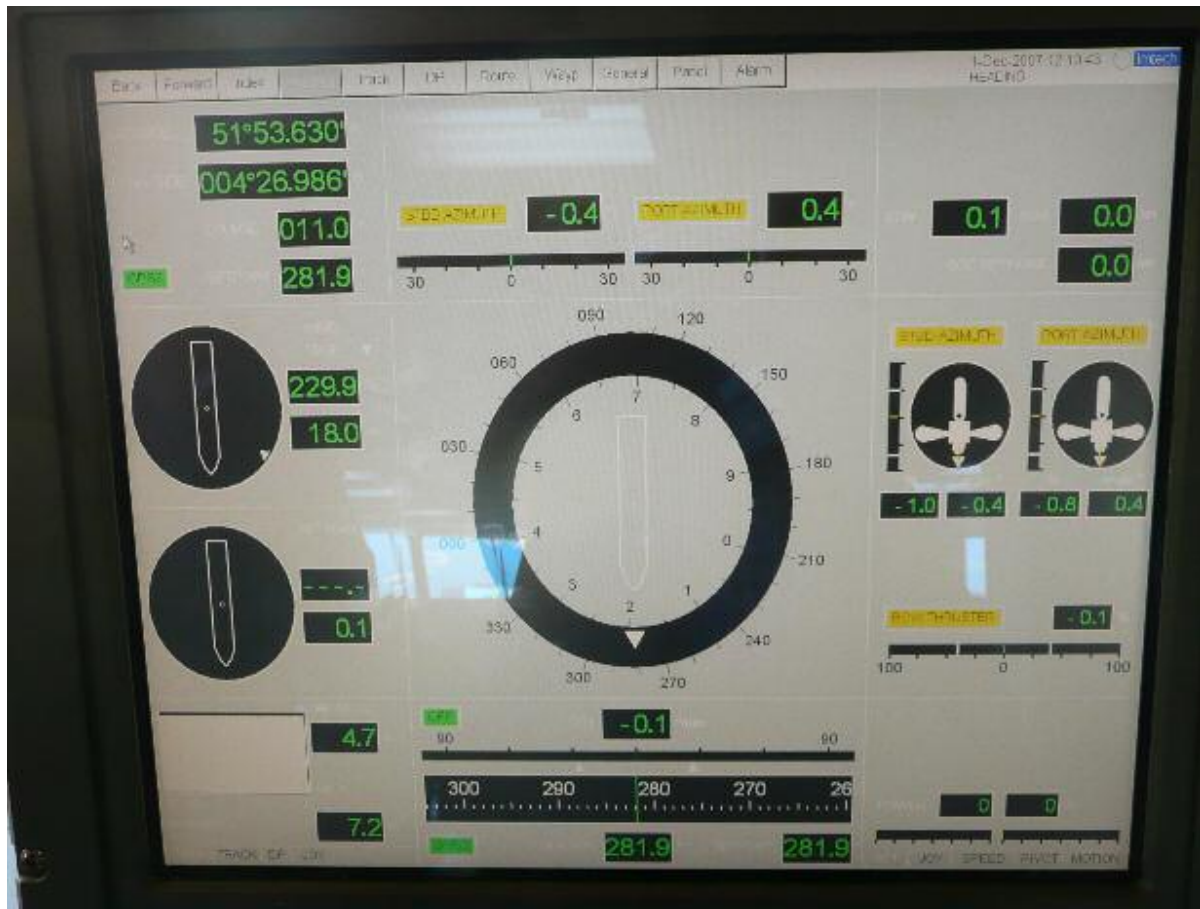
Ballasting and de-ballasting is carried out with four main ballast pumps, each with a capacity of 1,200 cu.m/h at 30 m head. Other pump systems include two fi-fi/general service pumps, each with a



propellers via two electric motors of 5,100 kW each. (photo top left) Manoeuvring is enhanced by a single 1,640 kW bow thruster with cp-propeller.

The propulsion and manoeuvring plant consists of two 8,700 kW Wärtsilä 12V38 B common rail diesel generator sets, (photo top) each driving two Lips azimuth pulling thrusters featuring cp-

DAILY COLLECTION OF MARITIME PRESS CLIPPINGS



The thrusters control screen at the wheelhouse



The Engine control room

DAILY COLLECTION OF MARITIME PRESS CLIPPINGS

Auxiliary power is derived from two Wärtsilä 6L20 common rail diesel generator sets of 1,020 kW. Emergency power is supplied by a Volvo Penta D34A MS generator of 610 kW, 440 V, 60 Hz.



The spacious bridge features an integrated bridge system consisting of a UniMACS 3000 with two radar systems with ARPA and two ECDIS, one conning and platform management system, incorporating an advanced DPT 3500 autopilot/joystick system.



Left : The ships office



The messroom

DAILY COLLECTION OF MARITIME PRESS CLIPPINGS



And the cooks in action in the spacious galley



The **cinema** onboard, which can be used for entertainment but also for educational purposes such as trainings sessions for yacht crews which are sailing with the **Yacht Express** during the voyage.

DAILY COLLECTION OF MARITIME PRESS CLIPPINGS



The **YACHT EXPRESS** seen getting ready to ship her first yachts from Genoa to the USA



"More important is that this sophisticated yacht carrier is having a service speed of 18 knots", said Clemens van der Werf, President of DYT, "meaning that a trans-Atlantic voyage from the Mediterranean to Florida/Caribbean with this ultra modern yacht carrier will be reduced by nearly 50% from 15 to 8 days!

Owners can enjoy the advantage of extra riders on board to accompany the yacht during the voyage and they can enjoy the state-of-the-art facilities on board, like the swimming pool, the atrium to observe their yachts as can be seen at the photos.



The addition of this new yacht carrier to the Dockwise fleet implies an important step forward for DYT to improve the quality of services to clients that is based on safety, regularity and reliability."



DAILY COLLECTION OF MARITIME PRESS CLIPPINGS



Cargo handling is facilitated by a 2 x 10 t crane with an outreach of 15 m.



DAILY COLLECTION OF MARITIME PRESS CLIPPINGS



Photo : Emile Ammerlaan ©

Principal characteristics of this new yacht carrier

Length o.a.: 209.00 m / 685.7 ft , Width o.a.: 32.20 m / 105.64 ft, Depth: 8.50 m / 27.89 ft, Draft: 5.80 m / 19.03 ft
Max. draft submerged: 14.00 m / 46 ft, Deck length: 165.00 m / 541.34 ft, Deck width: 31.00 m / 101.71 ft
Deadweight: 11,000 t, Service speed: 18 knots

Since its maiden voyage in 1987, **DOCKWISE YACHT TRANSPORT** has transported over 8,000 motor and sailing yachts to various destinations around the globe, offering owners and charterers safe and easy access to many of the world's premier cruising grounds. **Dockwise Yacht Transport** is specialized in the maritime transports of luxury (mega) yachts and is a group company of **Dockwise Transport B.V.**, the global leader in maritime transports of extremely large and heavy cargos. DYT is based in Fort Lauderdale, Fla., and with a fleet of four dedicated yacht carriers is the world's leading provider of yacht transportation on a regular liner service.



DAILY COLLECTION OF MARITIME PRESS CLIPPINGS

Yacht at Rest, Mind at Ease



For sailing schedules and quote requests,
visit our website:

www.yacht-transport.com



WORLD CLASS YACHT LOGISTICS

For more information please contact:
Dockwise Yacht Transport
Fort Lauderdale, Florida
Catalina Bujor (PR/Marketing Officer)
Telephone: +1 954-525-8707
E-mail: pr@dockwise-yt.com

The compiler of the news clippings disclaim all liability for any loss, damage or expense however caused, arising from the sending, receipt, or use of this e-mail communication and on any reliance placed upon the information provided through this free service and does not guarantee the completeness or accuracy of the information. If you want to no longer receive this bulletin kindly reply with the word "unsubscribe" in the subject line.