

Ouvertüre

Zu Heinrich Joseph v. Collins Trauerspiel

Coriolan

LUDWIG VAN BEETHOVEN (1770-1827)

Op. 62

Clarinet

Allegro con brio

2 3 3

ff

12 4 *I.* 13

p cresc.-----f

34 *ff* *a2* *sf*

41 *sf sf sf sf sf sf sf*

49 5 *I.* *p cresc.-----*

61 *ff* *p* *a2* *cresc.-----ff*

71 11 *a2* *I.* *p* *ff*

89 *sf sf sf*

95

95

sf *a2*

102

102

p *f* *f* *f* *a2*

111

111

sf

118

118

p *f* *a2*

126

126

p *f* *a2*

135

135

p *f* *a2*

148

148

ff *sf*

153

153

ff *sf* *sf* *ff*

164

164

sf *ff* *sf* *sf* *sf* *sf* *sf*

173

Staff 173-188: Treble clef, key signature of two flats. Measures 173-188. Dynamics: *sf*, *sf*, *sf*, *p* *cresc.*, *ff*. A slur covers measures 173-188. A fermata is over measure 188. A second ending bracket labeled "9" covers measures 189-198.

189

Staff 189-200: Treble clef, key signature of two flats. Measures 189-200. Dynamics: *pp*, *ff*, *p*. A slur covers measures 189-200. A first ending bracket labeled "5" covers measures 189-193. A second ending bracket labeled "I." covers measures 194-200.

201

Staff 201-207: Treble clef, key signature of two flats. Measures 201-207. Dynamics: *f*, *p*. A slur covers measures 201-207. A fermata is over measure 207.

208

Staff 208-213: Treble clef, key signature of two flats. Measures 208-213. Dynamics: *cresc.*, *ff*. A slur covers measures 208-213. A fermata is over measure 213.

214

Staff 214-220: Treble clef, key signature of two flats. Measures 214-220. Dynamics: *ff*, *sf*. A slur covers measures 214-220. A fermata is over measure 220.

221

Staff 221-228: Treble clef, key signature of two flats. Measures 221-228. Dynamics: *sf*, *sf*, *sf*. A slur covers measures 221-228. A fermata is over measure 228.

229

Staff 229-237: Treble clef, key signature of two flats. Measures 229-237. Dynamics: *p*, *f*, *f*. A slur covers measures 229-237. A fermata is over measure 237.

238

Staff 238-253: Treble clef, key signature of two flats. Measures 238-253. Dynamics: *f*, *p* *cresc.*. A slur covers measures 238-253. A first ending bracket labeled "11" covers measures 238-242. A second ending bracket labeled "I." covers measures 243-253.

254

Staff 254-263: Treble clef, key signature of two flats. Measures 254-263. Dynamics: *f*, *p*, *f*, *p*, *f*, *p* *cresc.*. A slur covers measures 254-263. A fermata is over measure 263.

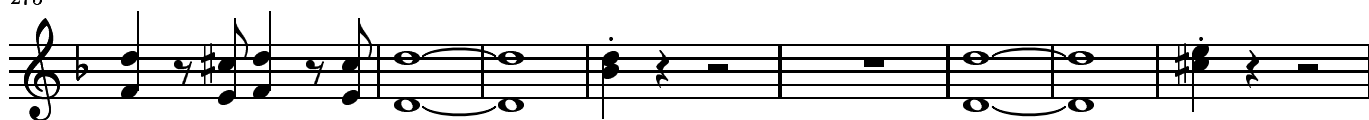
264



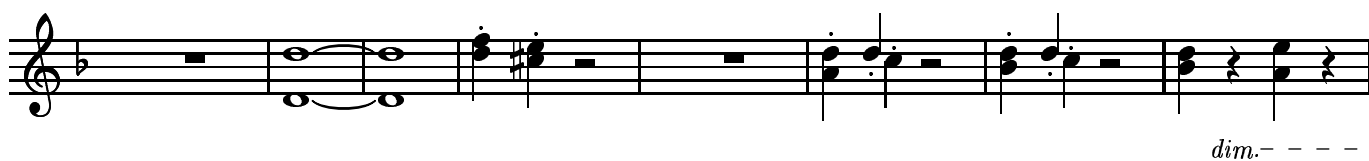
269



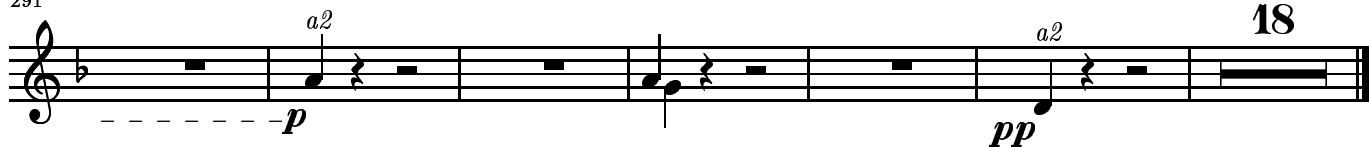
275



283

*dim.* - - -

291



18