

Symphonie en sol mineur

Clarinete 1 en ut

Etienne MEHUL

I

Allegro

10

17

23

35

43

54

f

f

dolce

cresc.

ff

64 *fp*

76

84 *ff*

89 **C**

95 8

108 *fp* *f* **D**

116

123

130 *mf*

139 *f* *tr* *f* *tr*

E

147 *sfz* *tr*

155 *sfz*

163 *fp* 5

173 *p* 2 3

184

191 *ff*

197 *ff* **G**

203 *p* *fp* *f* 4

216 7

230 3

238 *dolce*

H

246 *ff*

252 *dolce*

261 *ff*

270

275

280

II

Andante

A

B Violon 1

p

C Mineur

D

E Violon 1

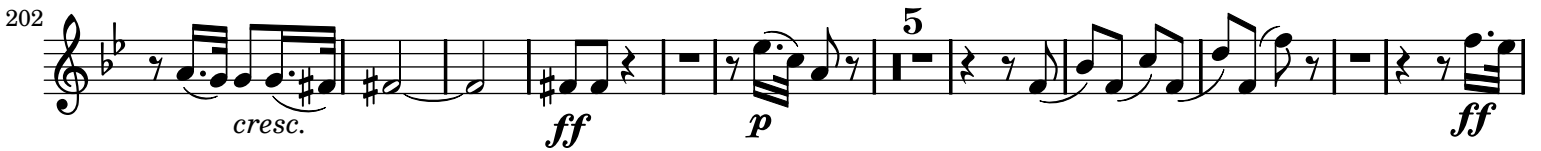
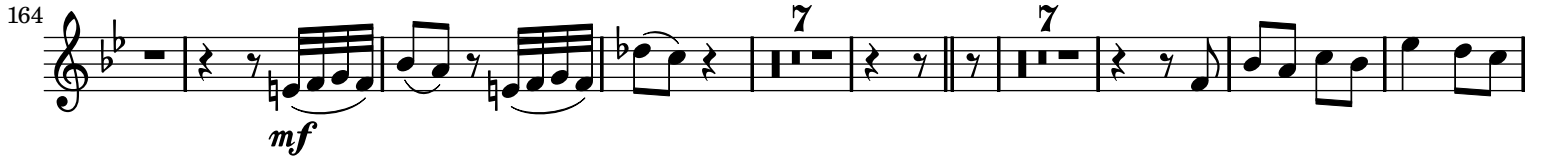
F

32 *p*

72

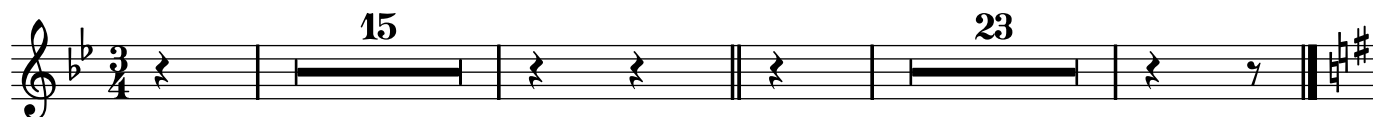
G**H** Majeur**I****K**

Flûte 1

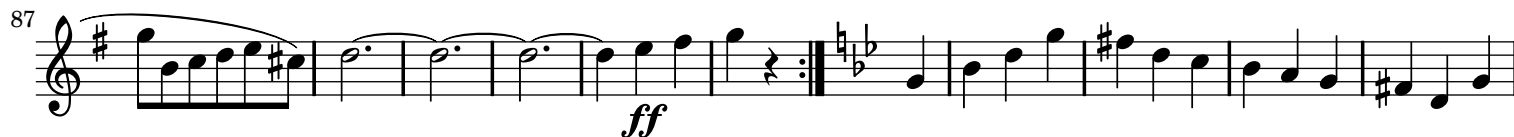
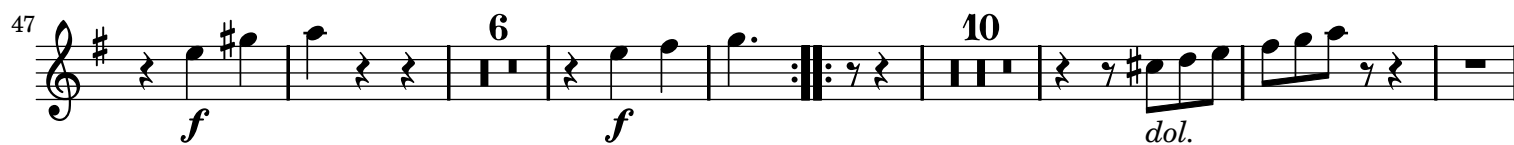
**L****M****N**

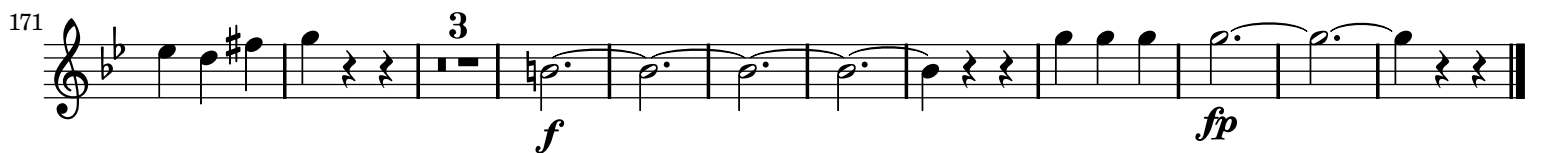
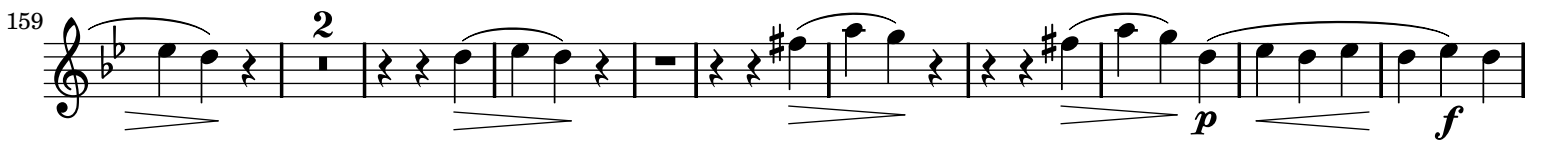
III

Allegro moderato



Trio





IV

Allegro Agitato







153

162

171

180

192

197

203

208

214

cresc. - - - - -

ff *f* *dol.*

f

p

The musical score for Clarinet 1 in C, measures 153 to 214, is written in 3/4 time. The key signature has two flats (B-flat and E-flat). The score consists of nine staves of music. Measure 153 starts with a whole rest, followed by a quarter note G4, a quarter note A4, and a quarter note B4. Measure 162 features a half note G4, a half note A4, and a half note B4. Measure 171 includes a half note G4, a half note A4, and a half note B4. Measure 180 has a half note G4, a half note A4, and a half note B4. Measure 192 features a half note G4, a half note A4, and a half note B4. Measure 197 includes a half note G4, a half note A4, and a half note B4. Measure 203 has a half note G4, a half note A4, and a half note B4. Measure 208 features a half note G4, a half note A4, and a half note B4. Measure 214 includes a half note G4, a half note A4, and a half note B4. The score includes various dynamics and articulations: *cresc.* (crescendo), *ff* (fortissimo), *f* (forte), *dol.* (dolce), and *p* (piano). There are also slurs, ties, and accents throughout the piece.

227

p

233

f

241

p

250

6

p > > > >

264

3

f

276

3

ff

289

ff

299

5

311