

The Mon Forum

Issue No. 1/2005

January 31, 2005

The Publication of Human Rights Foundation of Monland (BURMA)

Contents

News:

- (1) Hundreds of villagers still flee from their homes
- (2) Burmese Army burns down 3 Mon villages
- (3) 5 millions Kyat per month payment for gas-pipeline security fee

Interviews:

Knowing the reasons of population displacement

Report:

- (1) No Protection to Innocent Civilians and Population Displacement

Some Acronyms in This Issue

SPDC-	State Peace and Development Council,
LIB-	Light Infantry Battalion (of Burmese Army),
KNLA-	armed faction of Karen National Union,
MNLA-	armed faction of New Mon State Party,
NMSP-	New Mon State Party,
HRP-	Hongsawatoi Restoration Party,
MHS-	Mon National Schools,
MRDC-	Mon Relief and Development Committee

News

Hundreds of villagers still flee from their homes

(January 2004, Southern Part of Ye Township)

Hundreds of villagers from southern part of Ye Township and northern part of Yebyu Township are still fleeing from their homes to escape the mis-treatment of the Burmese Army and they arrived to settle in the New Mon State Party's area, said a member of local relief organization, Mon Relief and Development Committee.

The population displacement in southern part of Burma that bordering with Thailand has been intensified since the end of rainy season, October 2004. But in December 2004, the villagers have to flee more from their home villages, as the troops of Burmese Army planned to arrest the relatives or friends of the members in the Mon splinter group. Additionally, the troops of Burmese Army also launched a serious military offensives in the area.

A MRDC camp committee said, "the escaped villagers said that they had to work for the Burmese Army nearly every day. They had no time to do their own works."

An escaped villager also added that besides they were forced to work for the military's projects, at the same time, they are also asked to pay taxes to the army on a rotation basis. If they asked permission to go



Displaced persons to which the villagers needed to provide building materials such as bamboo during their deployment

The Real Intention of the Troops of Burmese Army

Although the New Mon State Party (NMSP), a Mon political party, which took ceasefire with the regime since 1995, planned to attend the regime's arranged National Convention, but the treatment of Burmese Army against the Mon civilians has not been improved.

In southern part of Ye Township, Mon State, the troops of Burmese Army still use the local villages in the construction of road, army bases, school, hospital and other infrastructure projects accordingly the displaced persons who fled from that area. Thousands of villagers including women, children, elderly people and other minor still have to flee from their homes in order to escape from the abuses and violations.

Although the Burmese Army or the military regime SPDC claims for the restoration of unity among all ethnic nationalities, but at the same time, it has actively involved in closing down of the Mon national schools in Ye Township. Actually, the Burmese Army is the main perpetrators' group that created much mis-understanding and disunity among the majority Burman people and ethnic nationalities.

The ethnic people always think the Burman people are the oppressors to them because the Burmese Army is totally representing the Burman and oppressed the other ethnic group. But only a few people including the ethnic political leaders and educated persons understood that the Burmese Army is the key body that created 'Disunity' in Burma between the non-Burman ethnic people and Burman people, and it also drags over 50 years civil war in the country.

their farms, they also have to pay 100 Kyat per day. They are allowed to stay only one-day at their farms and they had to return back their homes before 4 o'clock. If they returned back their homes after 4 o'clock, they must be shot and killed by the Burmese soldiers.

But in some area, the Burmese Army totally prohibited the villagers to not go their farms even they paid to the army commander. If they are at their farms, they can be shot and killed by the soldiers.

Accordingly to a villager from Toe-tat Ywa-thit village, two villagers were shot to death by the Burmese soldiers in December 2004, as they went to their farms to harvest their crops. The remaining villagers are feeling 'afraid' for the killing and most of them abandoned to go farms.

But when they could not go to their farms or orchid plantations, the local villagers faced another serious food-shortage problems at their villages.

Due to the continuous conscription of forced labour, often tax collection, movement restriction and other types of abuses, hundreds of villagers including women and children have fled from their homes. Many hundreds of them also fled into Thailand to seek works in there.

Burmese Army burns down 3 Mon villages

(January 2005, Ye and Yebyu Townships)

Troops of Burmese Army burnt down three villages in southern Ye Township and in northern part of Yebyu Township on the house by house basis on each day. About 100 houses in these villages were already burnt down and hundred of villagers escaped away from the villages.

South-East Command's No. 3 Tactical Command No. 3 has been burning down the civilians' houses in Wae-kwao (Paukpingwin), Magyi, and Dani-kyar villages. All of these villages are Mon villages they have from 100 to 300 households in the village.

Burmese soldiers burned down the houses in which the Mon soldiers from the splinter group or from the New Mon State Party have used as their temporary shelters.

According to villagers, the Burmese soldiers have been investigating from the villagers which houses were used by the Mon soldiers as shelters and burnt those houses. About 40 houses were already burnt down in Paukpingwin village and about 60 houses in another two villages.

"Before they burned down my house, they told me to collect our properties in the house. Then they burnt

down it. But in some houses, before the house owners completed collecting properties they burnt them down," a villager whose house was burned down said.

The According to villagers told IMNA, the soldiers normally burned down the houses in the evening time after night dark fell. After they burning down, the house owners and neighbors were forced to clean the damages, so that when the villagers came to the house in the morning they did not know what were happening to the house.

About 70 homeless families fled to a Mon IDPs village in Tavoy district under the control of New Mon State Party. Some homeless villagers run away from the villages and stayed with their relatives in another villages.

According to an escaped villager, "if the Burmese soldiers are continuing burning down the houses and torturing the villagers, nobody are dare to live in the villages. The villages will be empty soon."

Paukpinkwin, Magyi, and Dani-kyar villages are recently used as bases by the Mon splinter group, which already moved from the area. Since the end of the 2003, Burmese military lunched military offensives against to Mon rebels until now.

During military operation, over 20 women were raped, over 10 people killed and hundred of villagers were tortured by the Burmese soldiers.

Because intensive military offensives, the Mon rebels withdrew from the area and moved to the border areas. Although Mon rebels withdrew from the areas, Burmese soldier are still violating human rights violations such as conscription of porter, forced labor; taxation and looting; land and properties confiscation from the local civilians.

(based on news of Independent Mon News Agency - IMNA)

5 million Kyat per month payment for gas-pipeline security fee (January 25, 2005)

Villagers in southern Thanbyuzayat Township, Mon State, are forced to pay about 5 millions Kyat per month for Kanbauk-Myaingkalay gas-pipeline security fee to soldiers and they also forced to fence the gas pipeline for security reason, according to Villages Peace and Development Council (VPDC) in the area.

Military officers from Burmese Army's Infantry Battalion No.62 based in Thanpyuzayat collected each houses 2000 Kyat per month from 7 villages in the area, according to VPDC.

Villagers are also forced to fill ground along the gas pipeline route, where the pipes are overt on the ground additionally fencing gas pipeline where the gas pipe cross on the stream.

These villages are situated in southern of Thanbyuzayat and are far from the town. The villages which suffer from payment and forced labour are: Wae-kha-dard, Sakharn, Chork-pa-line, Wae-kha-meat, Wae-toer, Kalaing-pa-taw and Ywa-thar-aye.

Township SPDC authorities and the Burmese Army not only forced these villagers but also forced the villagers in other townships to pay for gas pipeline security service. The SPDC beefs up tight security force along the gas pipeline.

The authorities and soldiers also forced villages to clean the bushes alongside of the gas pipeline route and also ordered the owners of orchid plantation close to the route to clear the bushes in their plantations.

The villagers were regularly forced to work and no payment were paid to them for their contribution and even food costs during they were working there.

According to villagers along the gas pipeline, they said some villagers were also beaten by the soldiers who take gas pipeline security. Some villagers who across the pipeline route in the evening time were also accused as rebels and they were inhumanely torture. Local farmers and plantations near the gas-pipeline normally return to their homes in evening time after they completed their works.

Kanbauk-Myaingkalay gas pipeline was built in 2000 by relocating some Mon villagers in Thanbyuzayat Township and crossed into many farms and plantations. The farmers who lost their lands and properties did not receive any compensation cost from the regime.

This 150 miles long (*approximately*) gas pipeline brings gas from Yatana gas field via Kanbauk gas station in Tenasserim Division and supply energy to a cement factory locates in Myaingkalay village of Pa-an Township, Karen State.

Knowing the reasons of population displacement

In December 2004 and January 2005, many hundreds of Mon villagers from Ye and Yebyu Townships have fled to New Mon State Party's controlled areas. In order to know the deep reason of fleeing, HURFOM's Human Rights Workers also conducted interviews to some of the displaced persons. The information are as below:

Interview 1:

Name	Nai Myo Win and Mi Mi
Age	(47) and (54)
Address	Toe-tat Ywa-thit village, Southern Ye Township, Mon State
Nationality	Mon
Religion	Buddhist
Marital Status	Married
Children	(3)
Arrival date	About (10) days

The following report outlines the reasons why Myo Win and Mi Mi left their village to reach Kyaiksoi Mon village, Halockanee Refugee Resettlement Camp.

We were not allowed to work at our plantation and were prevented from going outside of the village. We were allowed to take only a pack of rice, enough for a day, once a week. If we took extra rice, the Burmese troops would suspect us of assisting the Mon rebel groups. If we wanted to leave outside of our village, we have to ask for a permission paper from the Burmese soldiers.

By preventing us from going to our plantations, our fruits and vegetables would be stolen (*by the soldiers*). At the same time, when we did get permission to go there for a long time, nothing left in the fields and gardens. We had to buy all new belongings because they are stolen by the soldiers. Some villagers were unable to feed themselves because they were restricted in the village away from the fields; some took the risk and went without a permission paper. After the soldiers found them without papers, they were brutally beaten by the soldiers. Also, when we were living in the village, we could not walk around the village at night and could not talk with each other in our free time.

We are not allowed to gather in large groups, no more than four or five people. Since about 100 soldiers are always patrolling in our village, they could suspect anyone of us any time of wrongdoing, like supporting the rebels. Many villagers have been brutally beaten by the soldiers, the incident was about a year ago. At the beginning of the year 2004, Nai Lahot, 70 years, was sitting in his house; the soldiers from Burmese Army's Infantry Battalion No. 299 came in and brutally beat him and stabbed him with a knife in his face. They did this because he was suspected of being a rebel supporter.

In the rainy season (in August 2004), Nai Yone, 28 yrs, was also brutally beaten for the same reason of being a rebel supporter, his ribs were broken and his eye was injured.

Before I came here, about (5-6) days ago, the soldiers stole my chickens at night.! hadn't known they were soldiers, and I shouted at who was stealing my chickens. After I was called down by

the soldiers and was beaten. (He is still in pain for the beating during interview). Regardless of whether you are a man or a woman, at least five villagers in a ward have to work at night time for security (a kind of patrolling duty) for the village as demanded by the soldiers. The villagers must provide for the soldiers food and tax. Every household of 700 households in the village have to give them 500 Kyat per month. Now many households have moved away. If someone gets sick in the village, the soldiers did not allow him/her to go for medical treatment in Ye township, instead villagers are forced to go to Khaw-za village hospital, a newly created Sub-township.

In June last year (2004) when a woman from my village Mi Than Kyi was waiting for her husband who was fishing nearby at a river, she was abducted by soldiers (same battalion quoted above) and taken away from the river and raped from noon to evening. She was deeply distressed when she returned home.

Interview 2:

Name	Nai Joot
Age	65
Address	Mihtaw-hla-gyi Village, Southern Ye Township, Mon State
Nationality	Mon
Religion	Buddhist
Occupation	General worker
Marital Status	Married
Children	(8)

According to the poor economic condition, I had to find work as general (hired) hard worker. But, I could not work at a regular job because I had to work at the Burmese Army's (Light Infantry) Battalion No. 273. I had to go and find bamboo to build a fence around the battalion in Khaw-za village. And I also had to work in road construction from Mihtaw-hla-kalay village to Khaw-za village. It is about a two hours walk. With no advance warning for one day or more, they came in the morning urgently and told us to go to their work site. If someone could not go, he/she would be fined 6000 Kyat and 2 *visses* of chicken. We were stopped from the battalion or work sites in the evening and then had to provide security for the soldiers with all together ten villagers for the whole night. They set us up with jungle arms (hunter guns); they do not choose between men, women and children — all are required for this work. Even 12 year old students, they had to do it too.

I was also often arrested as porter. When soldiers stay in the village they sleep inside the villagers' houses. We were also forced into bringing their arms and ammunition from Mi-htaw-hlar, Khawza and to Magyi village as porter. In one month, I was forced three to four times to be porters for them [Burmese battalion] for at least for (2-3) days per time. The loads in the porter service was very heavy, it was difficult, and we were beaten all the time. According to my age, I was getting old, I could walk slowly. But the soldiers kicked me and I fell down on hard stone and was injured around my eyes (his scar is still visible). I also witnessed a villager from Kywe Thalín, a 40 years old man who was unable to carry their big basket and who was shot dead in the middle of the road. Out of fear, I had to flee from them.

Before I came here, about 10 houses were destroyed by the soldiers who looted goods and other items belonging to the villagers. The houses of Nai Rek, Nai Hla Win, Nai Hake and Nai Nyein Din were destroyed. It is probably more than that. After destroying the houses, they seized the woods and they used them to build the market and school.

Last September 2004, Nai Yone, 40 years, who is my cousin, disappeared after being arrested for being suspected a rebel supporter by the Burmese soldiers. He was the headman of the village. His wife is Mi Than Kyi and she is currently imprisoned in Moulmein prison for suspicion of rebel-supporters. They have 4 children, the younger two are still in the village and the elder two are working as migrant workers in Thailand. Another two villagers, Nai Dot and Nai Win Hlaing also disappeared since September 2004.

We had to pay about 1500 Kyat per month for security and porter fees while we were living in the village.

Interview 3:

Name	Nai Shwe Phan
Age	(68)
Address	Weng Tamoit Village, Southern part of Ye Township, Mon State
Nationality	Mon
Religion	Buddhist
Marital Status	Married
Children	(2)

I arrived here (Halockhane Mon Refugee Camp) since four months ago. Because of Mon troops activities in around our area, the Burmese troops (SPDC troops) always came into our village and always asked for porters and cash from village. Sometimes they came and tortured the villagers who were suspected as contact persons of the Mon armed group. In many cases and many times, I was beaten by a Burmese commander from the battalion even I was old people. So, I could not stay longer in the village and that was why I flee.

There have been many Burmese Army's battalions, such as LIB No. 343, No. 408, IB No. 61 and IB No. 106 have been active and always came into our village to launch fighting the Mon troops led by Nai Bin. Thus, whenever the Burmese troops came into our village, they also asked many questions to us and took at least three villager porters from our village. And they also asked for foods such as rice, chicken, pork and beer, and so the villagers had to pay for it.

The reason why I have to flee my village is also related with my village headman, Nai Tin, 60 years old. He is my native and before I fled my village in September, the Burmese soldiers, who based in Khaw-za village, detained him, with the reason of failing to give the villagers to be porters. After Nai Tin, the village headman, was arrested, there is a lot of Burmese soldiers enter in our village. So, I was no longer want to live in my village and called my spouse and son and left my village. There is no village headman in my village till I left.

Before I left my village, the situation was really bad. Every villager must register even they go to their farm, which situated outside of the village. For me, my farm situated outside my village and everyday I have to register to get one day permit for 100 Kyat from battalion in our village. Sometime, they (the Burmese soldiers) went to the farm, and stole our belongings. But we are not dare to complain for that.

One time I was arrested by Burmese Commander but I totally forgot which the battalion and the name of the commander. At that time, I was on the way back to my house and groups of soldiers stop me to show them the bases of Mon splinter group. Because they believed that I must know

about the activities of the rebel soldiers and they arrested another 4 villagers because their farms and orchid plantations were far from village and they must know the bases of rebel soldiers.

The soldiers tied me up. The soldiers brought me along their military patrol and let me show the bases of the rebels. As I said, I did not know, they inhumanely tortured me. They brought me separately from other villagers and beat me with sticks in my back and thighs. They similarly tortured other villagers. They brought them for 5 days totally and feed me only one meal each day. When they asked for foods, they were also beaten.

After I released, I could not walk for 3 days. Other torture case I heard that even an old senior monk from Mi-htaw-hlar village was tortured by the Burmese soldiers.

As our villagers were accused as rebel-supporters or as it was far from army bases, whenever the Burmese soldiers came into our village, they always arrested some people to use as porters. The soldiers also didn't define how many days we have to go along with them. If they conducted only a military patrol in the area, we would be taken for at least 3 days and in maximum 15 days. If the soldiers took us to frontline, they would use us for at least one month, sometimes, up to six months.

After fighting between Burmese Army and Mon rebel groups in October 2004, 9 of our villagers disappeared until today and nobody know I are alive or not. They are -

- * Nai Phar Dot (village committee member, Mi-htaw-hlar village)
- * Nai Yein
- * Nai Lone Hlaing (village committee member Weng Tamoit village)
- * Nai San Ngwe, age 25 years old (Village security)
- * Mi Maw Oo, a mother of 2 children
- * Nai Ah Jauh, age 48 yrs and a father to six children
- * Nai Tin Win age 37 yrs and a father to four children
- * Nai San age 40

During we were used to serve as porters, we had to go along with soldiers while they were taking security for railway road, motor road and gas-pipeline. If you do not want to go, we have to give them 2,500 Kyat per household for porter fee. We also have to pay village's security fee for 1,600 Kyat per household if we failed to guard the village.

Report

No Protection to Innocent Civilians and Population Displacement

I. Background of Ye Township and Yebyu Township

Mon State, where the majority of ethnic Mon civilians live, situates in southern part of Burma and it has 10 administration Townships and it is a small State among 14 States and Divisions in current Burma. Under the totalitarian rule of military regime, State Peace and Development Council (SPDC), in Burma, Mon State is under dictatorial rule of the local SPDC authorities and armed force, the Burmese Army.

Ye Township situates in the southernmost part of Mon State and it is the largest township area. The majority of the Mon people are the orchid farmers who mainly grow various types of fruits such as lime, orange, betel-nut, and rubber. Most of the lands in the areas are covered with green plantations and the people have rice resources. Similarly, Yebyu Township situates in northern part of Tenasserim Division and the majority of the people in this Township are also Mon people. Other ethnic people, Karen, Tavoyan are also living in these two Townships.

However, Ye and Yebyu Township and the people in there have been serious effected due to five-decades long civil war in Burma. Geographically, as the two Township areas is covered with forests and orchid plantations, it has been the main natural bases for ethnic rebel armed force such as Mon National Liberation Army - MNLA (armed faction of New Mon State Party) and Karen National Liberation Army - KNLA (armed faction of Karen National Union) to launch the military fighting against the Burmese Army.

When the troops of the rebel armed groups have based in the various parts of Ye Township and Yebyu Township, they have been totally relied on the civilians in the areas, in term of foods, shelters and guiding. Since the civilians were involving in helping the rebel armed groups, they have been constantly accused as 'rebel-supporters'. Accompanying with this accusation, the local civilians have been inhumanely mistreated by the government (or Burmese) soldiers.

During 1970s and 1980s, the Burmese Army, a 'Four Cuts Campaign' and had tried to cut all possible supports from the civilians to the rebel forces in Mon State, like it happened in many parts of Karen State, Karenni (Kayah) State, Shan State and Kachin State. Four cuts means the Burmese Army tried to cut off communication, recruitment, food supply and information supports from the civilians to rebel soldiers.

How did the civilians suffer from this campaign in Ye Township and Yebyu Township? Many Mon villages, which were far from main roads, especially motor roads and railway roads, and the Burmese Army's outposts, were forced to resettle near the main roads or surrounding areas of army camps. This was 'forced relocation of the civilians' and the Mon villagers in the rural areas of Ye Township have been suffered mostly during 1980s. That four campaign has forced thousands of villagers to flee from their homes and displaced. At that time, as the rebel armies controlled some parts of the areas close to the border, those displaced civilians tried to escape the rebel controlled areas. Later, as the forced relocation and increasing mis-treatment against the villagers, many refugees fled into Thailand and took shelters in Thailand's refugee camps.

In 1988, after the popular pro-democracy uprising in Burma, the Burmese Army seized the political power and increasingly launched the offensives against the ethnic rebel armed groups. Similarly, the Burmese Army's various battalions came and launched offensives in Ye Township and tried to uproot the activities of Mon rebel bases. They could increasingly control some villages and selected their own village headmen and replaced in the positions of headmen elected by the villagers. They have formed village militia force, train them to attend military schools and instructed them to fight against the rebel soldiers.

During 2004 and early 2005, the troops of Burmese Army still operates military offensives against a Mon splinter group based in this Township area and have violated the people's basic human rights such as killing, arrest and detention, inhumane and cruel treatments, sexual violations against women, movement restriction and etc.

II. Gross Human Rights Violations and Reason of Population Displacement



Some villagers who fled from the southern part of Ye Township. (In Halockanee Mon refugee camp)

Since the end of rainy season in October 2004, the troops of Burmese Army intensified its military offensives against the splinter groups and the villagers have been suffered more from the suspicion of rebel-supporter.

At the same time, as the Burmese Army planned to create its control in the area, they have been use more forced labour in the area in order to build a Mon village, Khaw-za, in Ye Township as a Sub-Town.

Since the Burmese Army's troops are still operating military offensives against a Mon splinter group, they still use the local villagers as 'porters'. The villagers' headmen also have to arrange in providing porters to

the soldiers on a rotation basis.

More seriously that effected the livelihood of the local villagers is 'movement restriction against the villagers' and therefore, they have less and less opportunity to stay and work at their farms independently. This made a serious problems to general population in the area. The purpose of Burmese Army is to cut off all contacts by the civilians to the rebel soldiers.

Illegal taxation is still on-going situation in both Ye and Yebyu Townships, and the villagers have to always pay the local authorities, members of Burmese Army, and village headmen for various types of expenses.

Therefore, hundreds of villagers fled from Ye and Yebyu Township areas and arrived to Thailand-Burma border area or to areas under the control of New Mon State Party. A local Mon relief group, Mon Relief and Development Committee also helped the displaced persons in term of foods and shelters.

HURPOM's human rights workers also conducted interviews to some of displaced persons, and the main reasons that they fled from their native villages are described as below.

Many villagers who arrived to the border area or to area under the NMSP mentioned the following reasons why they have to flee from their villages:

1. Unable to pay many types of fees and tax
2. Unable to be a porter of Burmese Army
3. Unable to work as forced labor in Military battalions
4. House were destroyed by Burmese troops
5. Illegal taxation to the Burmese Army

Various Types of Fee: In every village in these two Townships area, the villagers often have to pay for forced labour fee, porter fee, self-reliance development fee for road construction and military food supplies fee every month. They regular fee is 'porter fee'. The headmen collected them one time per month, they have to pay 1500 Kyat each month. If you could not pay, you will be taken as porter.

Conscription of forced labour is not regular in some area and but it continues near Khaw-za Sub-Town. If the Burmese Army or village headmen ordered the villagers, they have to go and work. If there is no works to use forced labour, the villagers still have to pay 1500 Kyat. They said they would hire a substitute in a construction, which they did not mention exactly.

Village militia force was formed with some people in the village, and the village headmen themselves collect money for militia fee. It is not on a monthly basis but the villagers have to pay 1500 Kyat each time to provide food cost, uniform cost and other facilities for all militiamen in village. They sometimes collected 'twice' quarterly. The villagers also have to pay for the village security fee. That cost is for soldiers in villages. The amount of payment are different from one village to another.

Porter Service: The villagers are was arrested as porter for 3-4 times each month and the soldiers always came into their villages and suddenly arrested all male villagers and took all of us as porters to sometimes carry rice or shells or ammunitions along with soldiers. As the villagers were accused as rebel-supporters or as it was far from army bases, whenever the Burmese soldiers came into our village, they always arrested all people to use as porters.

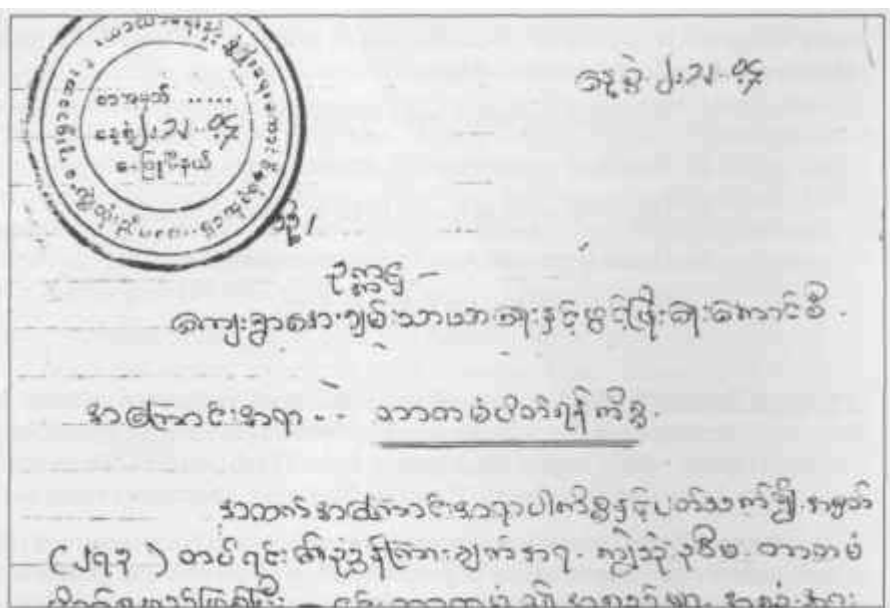


Normally, after the villagers in Ye Township were arrested, they are forced to carry food supplies and ammunitions to travel in various part of Township area and sometimes, they are brought to Yebyu Township.

The soldiers also did not define how many days the villagers have to go along with them for this porter service. If they conducted only a military patrol in the area, a villager would be taken for at least 3 days and in maximum 15 days. They have to carry and walk along the patrol quickly. If anybody who delay, that person could be torture seriously.

Conscription Of Forced Labour: The villagers are many times forced to contribute unpaid labour in military barracks. Everyone who has the age of over 12 years, including students in the village, must have to go and work as an unpaid labour and each time, the they have to work 5-6 days long. The works were sometime too heavy to work but sometime to do just carrying earth, clearing grasses and bushes (along the roads and military barracks). Men had to work more heavily than women as to fence the barracks' compounds, dig bunkers and trenches round the barracks.

Most villagers in southern part of Ye Township had to go and work the road construction between Khawza and Dani-kyar village which has over 10 miles long. They have to dig and carry the ground to complete that road. That road construction was started since last year and they have to work almost 3 or 4 days per week. They have no chance to work in our own farm. If they failed to go and work in road construction site, they have to fine about 1500 per household or two Kilograms of chicken for their food supply. If they



The instruction order to construct the dike by LIB No. 273

**Villages and Population Effected by the Offensives
And Human Rights Violations Committed by Burmese Army**

No.	Name of Villages	Estimated Households	Estimated Population
1.	Kyone-kanya	194	464
2.	Khaw-za	600	3500
3.	Khaw-za Chaung-wa	150	900
4.	Mi-htaw-hla-gyi	90	500
5.	Mi-htaw-hla-lay	80	530
6.	Magyi	100	560
7.	Dani-kyar	70	400
8.	Kyauk-l	110	650
9.	Dokabon	40	230
10.	Shwe-hin-tar	50	260
11.	Kabya-gyi	200	1100
12.	Kabya-wa	300	1650
13.	Yindein	200	1250
14.	Yindein Chaung-wa	80	450
15.	Yinye	300	1900
16.	Sonpayouk	40	240
17.	Ba-round	70	400
18.	Toe-tet Ywa-thit	200	1100
19.	Hangan	3000	17000
20.	Kaw-hlaing	1000	6000
21.	Ka-lort-gyi	800	4100
22.	Sin-gu	150	800
23.	The-kon	100	550
	Total	7924	44534

could not work quickly, they must suffer from kicking (by soldiers). Sometimes, they have to fence the military base and if they found the villagers did untidy or low-quality, they asked to re-fence again.

Sometime, the villagers are forced to re-build the soldiers and government servants' own houses, roads, new clinics and schools without any government supports. In this creation of forcible beautification of village, each family have to pay many thousands Kyat and some are forced to work if they could not afford to pay. In order to repair the main road in the village, the commander of the Burmese army ordered to move some good houses that built with high quality of wooden materials. But the soldiers do not let the owners of the house to collect the building materials after the house was destroyed. The soldiers came and took these wooden materials to build their military's fence or bridges without paying any money to house owners and additional land to re-build another house to live in.

Illegal Taxation: Additionally, In many villages, every villager have suffered from unlawful taxation by the authorities and Burmese Army. They have to pay for various types of tax to the authorities or Burmese Army inconstantly period and amount of tax. In most situation, the authorities or Burmese Army especially take money from the civilians in cash, but sometimes, the Burmese Army, that launches offensives also take rice and other food supplies as tax.

For most of those payment for tax to authorities or troops of Burmese Army are not regulated in laws. Generally, the people in the rural areas have to pay more because there is lawlessness and serious corruption among the authorities and members of Burmese Army have occurred.

The types of taxation have been varied. In areas where Burmese Army always collected money related to the development projects such as road, bridge, dam, water reservoir, and other constructions. Besides money collection for development projects, the soldiers or the commanders of Burmese Army in the rural areas also

collected 'porter fees' and 'food supplies fee' from the rural villagers. When the Burmese Army is launching offensives against the rebel armed groups or they are taking bases in one specific area, they always take porters to do their daily work in the bases and to carry things along with their operations.

According to a village, on October of 2004, the Mon Sprinter group arrived to our village and asked our village headman to provide them 300,000 kyats. So, the villager headman started to collect some fund to each household to fill full amount of the money they asked. And then, after a few day ago, the commander of the local battalion heard the news and he ordered to collect 900,000 Kyat via the village headmen.

III. Other human rights violations related to displacement

There are many hundreds of displaced persons who fled from both northern part and southern part of Ye Township in order to escape from various types of human rights violations - killing, torture, sexual violations, movement restriction, illegal taxation, forced labour, forced relocation, land and properties confiscation, etc.

Some IDPs said that there were more and more troops of Burmese Army deployed in their areas and the people face more human rights violations committed by the Burmese Army, and thousands of villagers from villages in southern and northern part of Ye Township displaced. Many of them also fled into Thailand to seek works after they could no longer survival at their villages.

The following situation happened recently also forced the villagers to flee from their homes.

A. Gas pipeline security soldiers use villagers in forced porter service

In December 2004, the troops of Burma's military regime, who are taking responsibility for the security of well-known Yadana gas pipeline to Thailand border, have constantly used villagers as unpaid porters during they lunch military offensives against the Mon Splinter group, which is previously a faction of Hongsawatoi Restoration Party (HRP) in Yebyu Township in the northern of Tenasserim Division, southern Burma.



Civilians in the porter service for Local Burmese Army in southern part of Ye Township, Mon State

"Until 3rd week of December, the Light Infantry Battalion No. 408 soldiers under the command of Major Aung Naing Myint used some villagers around Yepyu Township as porters for carrying foods and ammunition during their operations against the Mon splinter group moving there," a villager reported.

"During the operations, they also took a 60 years old man as porter and he was later brought to the hospital for treatment on 16th December. The Burmese soldiers recruited the villagers as porters twice a month Lort-thaing, Kyauk-kadin, Alae-sakan, and Kwe-talin village during they lunch operation,' he added.

"Tarkalaw, a Karen ethnic porter of 60 years old age told me that the soldiers used them for 5 days between December 12 and 16. They took them from Lort-thaing to Wae-peer village (in local names of the villages) in the jungle way. Before that, the porters told me that soldier also took them for two days on December 4. They have to carry army's food and ammunition supplies for about 30 miles in the jungle way," the village said.

As the Burmese Army does not belong modernized logistics for the security of the pipeline, its troops mainly use civilian porters without payment to carry food and ammunition supplies along with them. It also becomes a normal human rights violation against the civilians during five-decades long civil war in Burma.

B. Taxation on the Betel-nut Fruits and Movement Restriction

In December 2004, the first time a Burmese military battalion based in Yebyu Township collected betel-nut tax from the people, 1000 petal nut from each betel orchid owners. Yebyu Township is also rich with betel-nut.

The military Infantry battalion No.282, ordered to villages headman in Yebyu Township by order letter to collect the fruit tax," a village headman said.

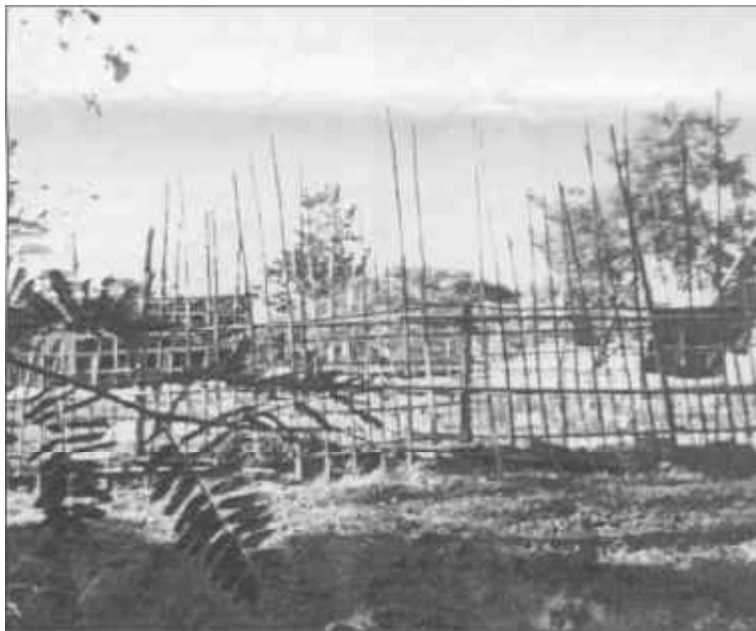
"I sent to village headman home 2000 petal nuts by myself with my motorbike for the tax. My village headman took from our family two thousands because we have 6000 petal plant in our orchid," a woman who belonged a betel-nut plantation explained.

Village headmen have to manage for the tax which orchid they have to collect more and less.

"In order, they collect the petal-nut for planting. But I do not believe. I think they collect to sell them for their funds because the petal-nut has price is high in Burma," added that village headman.

In Yebyu Township area, petal orchids planting livelihood is the most of the people are relying for their survival and the price is 7 Kyat per petal nut. For a thousand-betal-nut plants owner, they have income more than 1 million Kyat per year.

"That's why the military authorities collected the betel-nut from each village. A village they got more than 50,000 petal-nut fruits and they will get about 100 million Kyat in the whole township," the village headman explained how the army got the money.



Burmese Army's Military Base: to which the villagers needed to provide building materials such as bamboo during their deployment

claimed. In southern Mon State Burmese military has been launching military operation against to Mon splinter groups, and some villages are banned from going to orchid plantations that situates outside of the villages.

Some area, they Burmese soldier stole the villager betel-nut at the village home and resell for their income. "Sometime they took in front of us. But they do not ask us. We are also afraid of making complaint to the higher rank officer because at the moment they military lunched military operation to the Mon splinter groups in our area and the military was very cruel to people," a women from southern Ye township who reached the camp on the day before yesterday said.

"They also killed some people, beat the villagers who steal planned to go to the orchid for picking petal," she

C. Forced labour for government and army's buildings

In December 2004, the people from Khaw-zar village, a new Sub-Town that government created by the Burmese military government and villages nearby forced to build 90 houses in the town for the government employee.

Information on HURFOM and Invitation for Feedbacks from Readers

Dear Readers,

Human Rights Foundation of Monland (HURFOM) was founded in 1995, by a group of young Mon people. The main objectives of HURFOM are:

- To monitor human rights situations in Mon territory and other areas southern part of Burma,
- To protect and promote internationally recognized human rights in Burma,

In order to implement these objectives, HURFOM has produced "The Mon Forum" newsletters monthly and sometimes it has been delayed because we wait to confirm some information. We apologize for the delay.

However, we also invite your feedbacks on the information we described in each newsletter and if you know anyone who would like to receive the newsletter, please send name and address to our address or e-mail as below:

HURFOM, P. O. Box 11, Ratchburana P. O.
Bangkok 10140, THAILAND
E-mail: hurfomcontact@yahoo.com
Webpages: <http://www.rehmonnya.org>

With regards,

Director
Human Rights Foundation of Monland

The Burmese government created two new towns, in Ye township, Mon state in the beginning of this year to control the area where Mon splinter group, moving.

In the new Sub-town called Khaw-za, the local Burmese army battalions forced to each villages nearby to build at least 5 employee houses.

"We have to build by our own equipment and raw good for the house. Our village headmen collected money from our villager to buy for the good, such wood, nail, sand, cement and etc...," a villager from Yin-yea who building the house said. "About 30 houses are built for the employees' houses," he added.

In Khaw-za, the government is building it's offices; immigration, Township Peace and Development Council office and others military government office. Many resident houses moved by forced for the military government offices.



Forced labour in building a water canal

According to Khaw-za residents, military regularly used villager to build it army based and they collected money from the residents for the building.

Currently Khaw-za residents have been forced to build for military shelter for No.31 Infantry Battalion every day.

Before the government made village to town, the government put more military army bases and lunched military operation against Mon splinter groups in the areas. During operation, a lot of human rights violation such killing, rape and forced labor done by the army.

People in the area forced to pave more than 30 miles long road in the beginning of the years. During forced to pave road many of women and child included.

In mid of the year, the military tactical commanders setup government high school and tried to build it primary school in the small villages around Khawza in the other hand pressed 30 Mon National Schools in the area that run by New Mon State Party.

Lt-Gen Maung Bo from the government Defense Minister and Southeast Command Commander, Major Gen Thu Ra Myint Aung also visited for setting up the school in mid of the year.

Recently Southeast Command Commander against visited in that area for checking development in the area.



Members of Mon Relief and Development Committee (MRDC) are also helping some basic support for IDPs in Halockanee Mon refugee camp

At the moment town resident have been forced to build military shelter in No.31 Infantry Battalion everyday in Khawzar town. Likely Khawzar, another new setup town, Lamine resident also force to move their house for extending road, many Lamine people land are also confiscated for Building the government office.

IV. Population Displacement

The population displacement is still a serious problem for the communities in Ye and Yebyu Townships southern part of Burma. However, the population displacement has still occurred in eastern part of Burma's border with Thailand, to where the troops of Burmese Army are operating the military offensives.

Hundreds of Mon villagers from southern part of Ye Township and from Yebyu Township have gradually fled from their villages since the beginning of 2004. Some of the village communities in southern part of Ye Township like 'Kyone-ka-nyar' village was totally destroyed by the Burmese Army after nearly all villagers fled from their homes. The village has about 100 households.

In December and January 2004, more seriously, the Burmese Army's troops in Ye and Yebyu Township area also burnt down some houses in Mon villages, in which they believed the troops of Mon rebel soldiers took base or sheltering in the past. They burnt down some houses in the villages and therefore, the villagers have to flee from their homes. Many of them also arrived in New Mon State Party controlled area and have taken shelters in there.

According to the Mon Relief and Development Committee (MRDC), there are about 40000 internally displaced persons in NMSP controlled area and over 12000 returned refugees from Thailand are also remaining in the NMSP areas or in the Mon refugee resettlement site.

