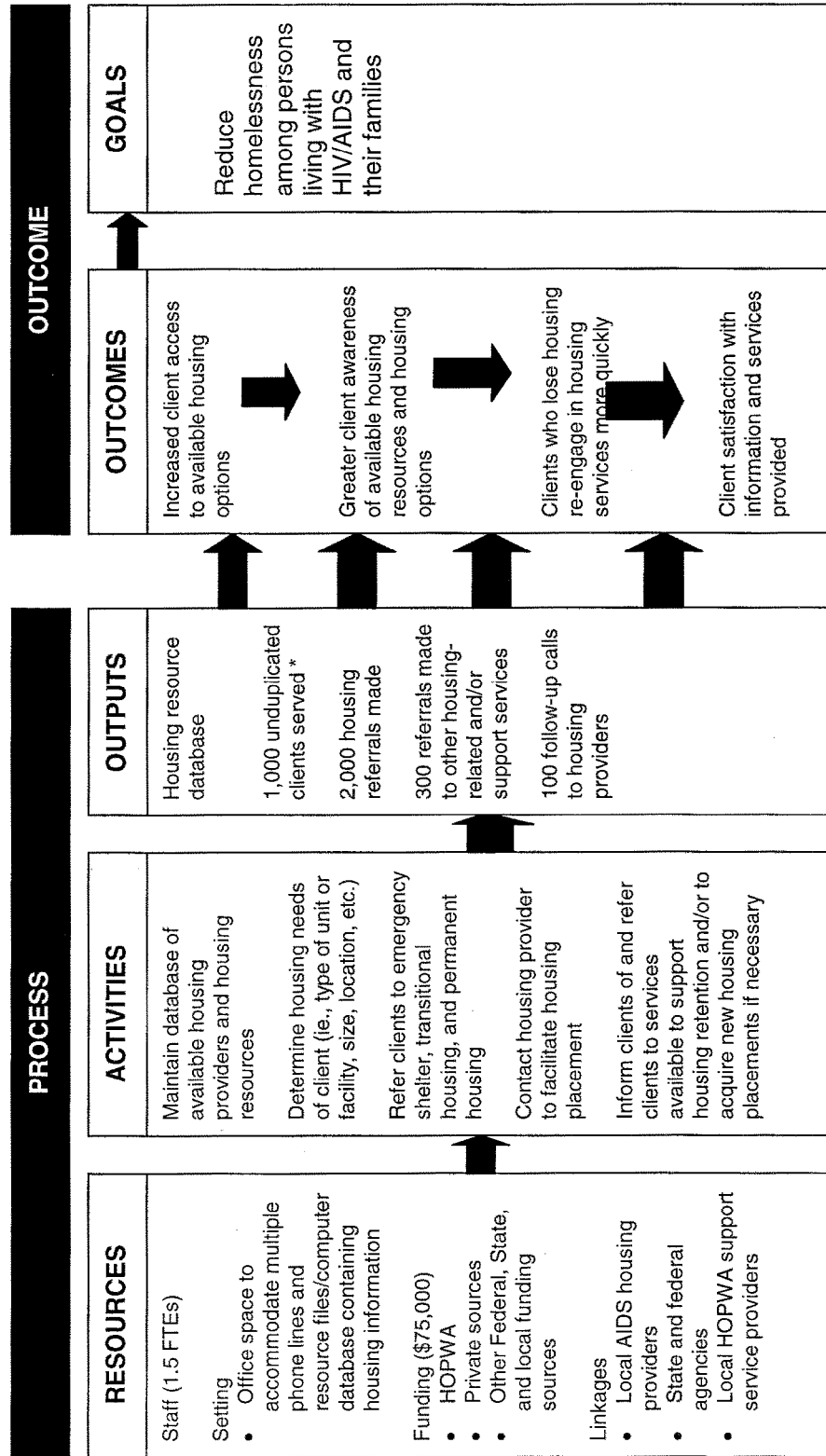


**PROGRAM EVALUATION LOGIC MODEL
EXAMPLE: Housing Information & Referral**

Target Population: Homeless persons living with HIV/AIDS in the community and their families.
Program Theory: Providing information about available housing and timely referrals to AIDS housing providers will facilitate housing placements and decrease homelessness among persons living with HIV/AIDS



* Required HOPWA output measures on the number of units of housing, by type, assisted during each project operating year.