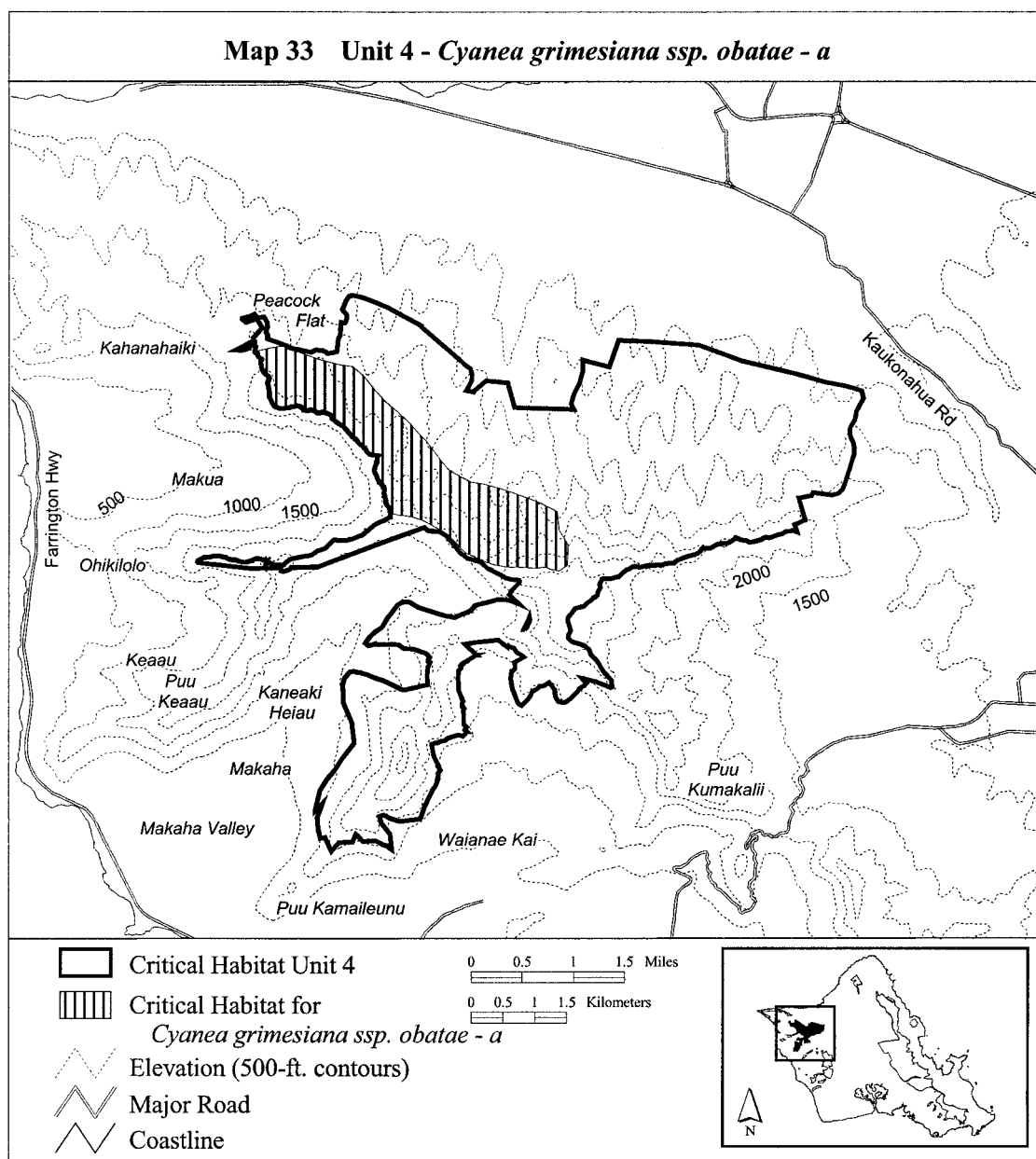


(ii) Note: Map 33 follows:



(34) Oahu 4—*Cyanea longiflora*—a
(362 ha; 896 ac)

(i) Unit consists of the following 163 boundary points: Start at 589322, 2379008; 589227, 2379030; 589144, 2378934; 588984, 2378856; 588910, 2378852; 588910, 2378851; 588899, 2378848; 588898, 2378848; 588887, 2378841; 588887, 2378840; 588866, 2378808; 588853, 2378830; 588638, 2378825; 588557, 2378780; 588549, 2378779; 588522, 2378764; 588468, 2378783; 588294, 2378820; 588097, 2378901; 588099, 2378909; 588092, 2378911; 588079, 2378910; 587994, 2378891; 587795, 2378868; 587551,

2378882; 587485, 2378896; 587399, 2378901; 587322, 2378929; 587266, 2378941; 587232, 2378962; 587081, 2379017; 586980, 2379113; 586772, 2379174; 586781, 2379184; 586778, 2379185; 586637, 2379321; 586447, 2379529; 586294, 2379624; 586135, 2379719; 585918, 2379796; 585737, 2379832; 585556, 2379836; 585574, 2379901; 585531, 2379987; 585481, 2380116; 585466, 2380282; 585337, 2380490; 585308, 2380573; 585327, 2380678; 585338, 2380712; 585339, 2380712; 585344, 2380738; 585346, 2380754; 585345, 2380767; 585345, 2380777; 585347, 2380785; 585348,

2380789; 585348, 2380790; 585352, 2380813; 585215, 2380831; 585132, 2380968; 585086, 2380996; 585028, 2381065; 584964, 2381101; 584881, 2381216; 584729, 2381329; 584626, 2381453; 584497, 2381510; 584462, 2381482; 584344, 2381514; 584325, 2381523; 584324, 2381523; 584310, 2381528; 584309, 2381528; 584295, 2381527; 584259, 2381537; 584134, 2381603; 584046, 2381591; 583951, 2381568; 583888, 2381564; 583811, 2381577; 583728, 2381611; 583670, 2381715; 583652, 2381855; 583660, 2382042; 583584, 2382099; 583545, 2382178; 583530, 2382274; 583616,