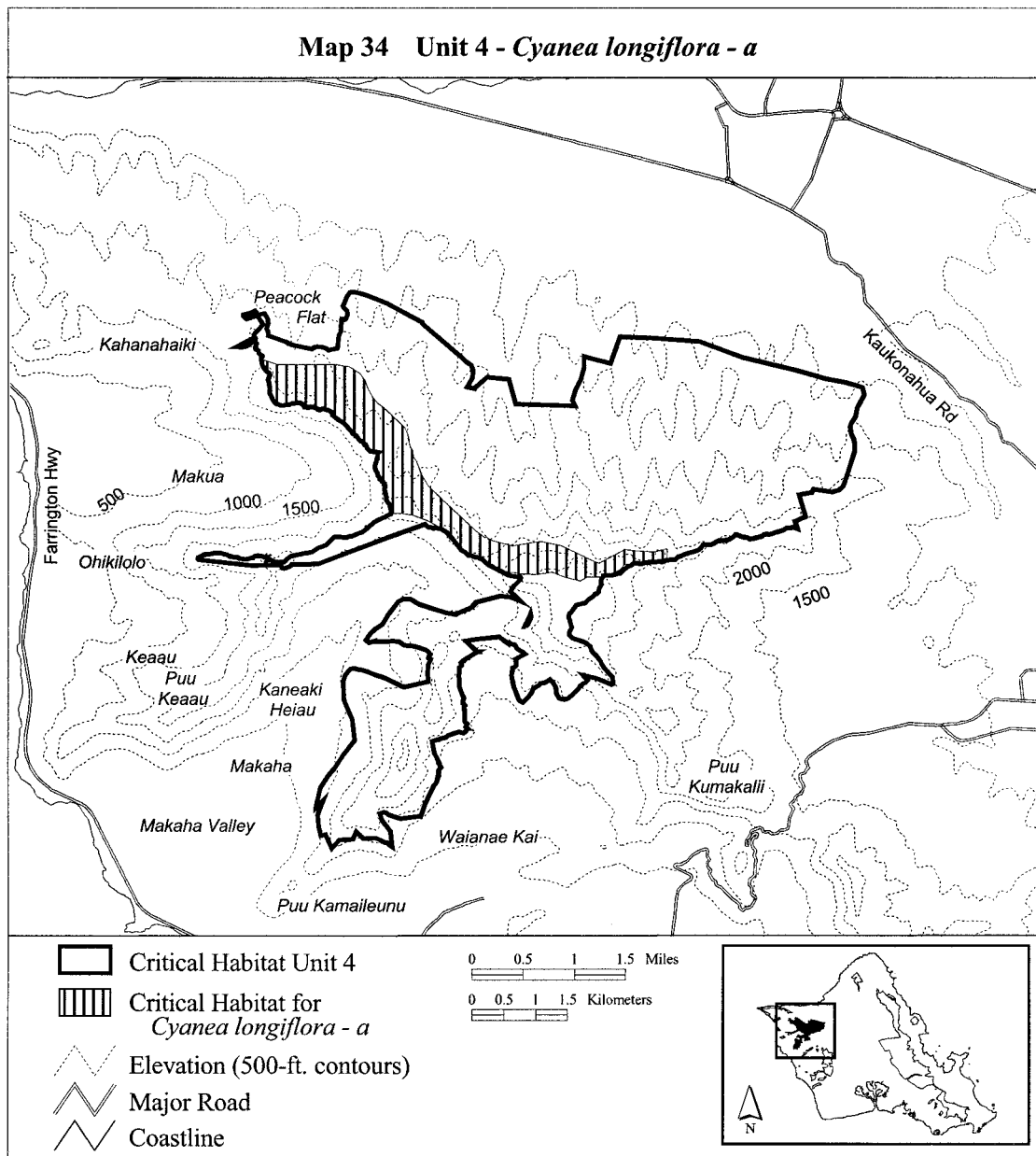


2382242; 583770, 2382188; 583933,  
2382192; 584155, 2382192; 584490,  
2382188; 584676, 2382188; 584911,  
2382156; 585065, 2382052; 585141,  
2381944; 585178, 2381835; 585254,  
2381699; 585340, 2381577; 585435,  
2381519; 585630, 2381329; 585770,  
2381193; 585806, 2381121; 585833,  
2381017; 585847, 2380890; 585888,  
2380845; 585910, 2380736; 585955,  
2380664; 586023, 2380469; 586133,  
2380279; 586136, 2380279; 586407,  
2380013; 586900, 2379542; 587025,

2379450; 587040, 2379467; 587126,  
2379412; 587224, 2379382; 587447,  
2379321; 587646, 2379357; 587816,  
2379378; 587895, 2379391; 588218,  
2379331; 588742, 2379076; 588826,  
2379041; 589211, 2379253; 589214,  
2379255; 589215, 2379255; 589224,  
2379260; 589280, 2379255; 589300,  
2379255; 589347, 2379249; 589636,  
2379223; 589701, 2379230; 589887,  
2379275; 589886, 2379260; 589892,  
2379260; 589892, 2379189; 589892,  
2379098; 589882, 2379095; 589882,

2379089; 589881, 2379089; 589839,  
2379075; 589839, 2379074; 589806,  
2379068; 589790, 2379069; 589787,  
2379069; 589747, 2379069; 589705,  
2379066; 589675, 2379063; 589616,  
2379059; 589604, 2379058; 589557,  
2379052; 589519, 2379042; 589496,  
2379035; 589462, 2379034; 589441,  
2379042; 589424, 2379047; 589391,  
2379048; 589370, 2379041; 589369,  
2379041; 589348, 2379025; 589324,  
2379009; return to starting point.

(ii) **Note:** Map 34 follows:



(35) Oahu 4—*Cyanea longiflora*—b (61 ha; 150 ac)

(i) Unit consists of the following 24 boundary points: Start at 586477,

2377825; 586452, 2377842; 586384,  
2377878; 586334, 2377946; 586298,  
2378018; 586330, 2378113; 586610,  
2378253; 586813, 2378347; 586800,

2378330; 586827, 2378353; 586882,  
2378430; 587085, 2378484; 587257,  
2378529; 587429, 2378511; 587659,  
2378421; 587718, 2378371; 587759,