

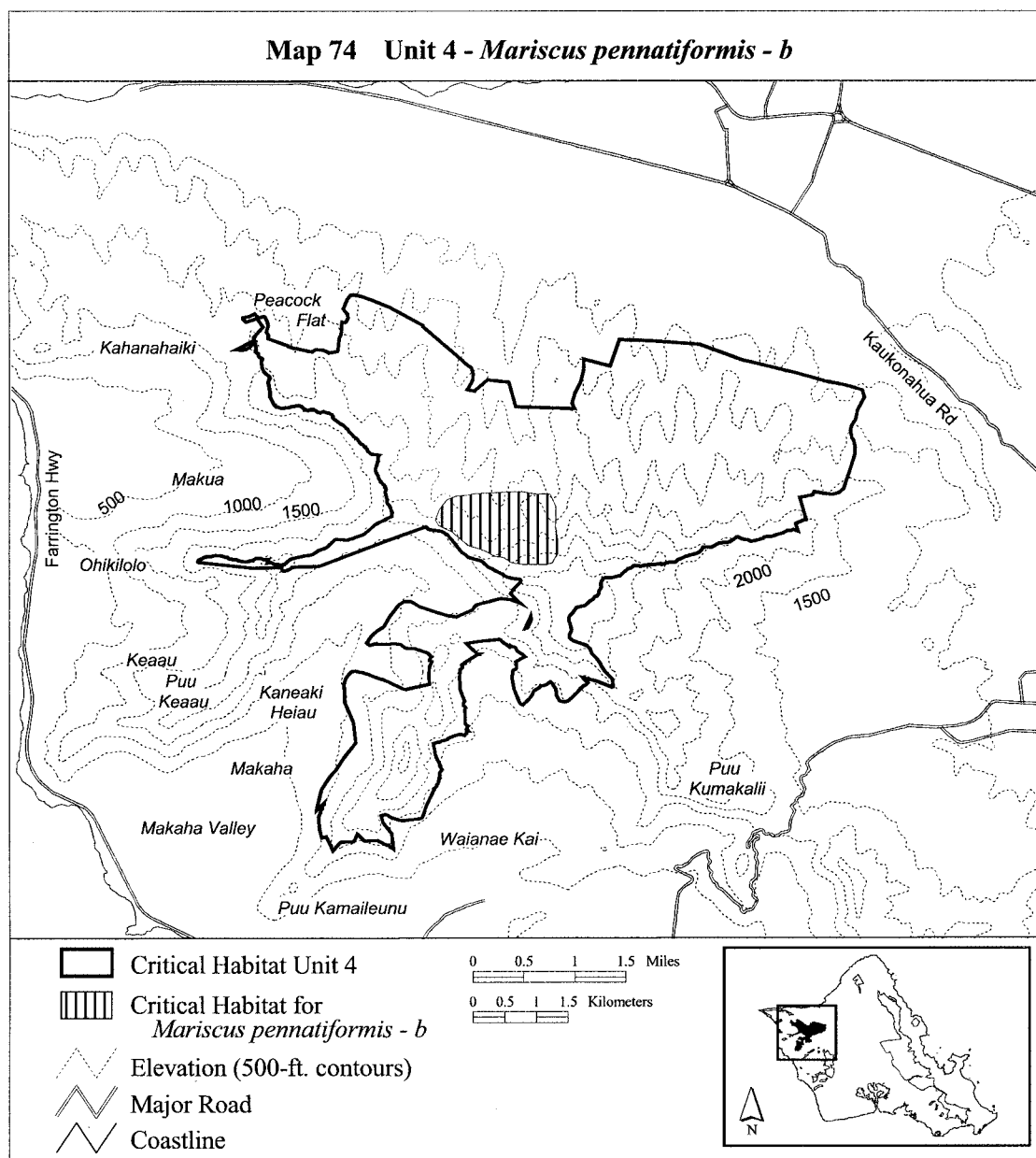
(74) Oahu 4—*Mariscus pennatiformis*—
b (170 ha; 421 ac)

(i) Unit consists of the following 35
boundary points: Start at 588047,
2380182; 588144, 2379979; 588144,
2379793; 588131, 2379665; 588157,
2379510; 588165, 2379390; 588165,

2379280; 588165, 2379231; 588134,
2379169; 588090, 2379090; 587997,
2379063; 587874, 2379063; 587732,
2379068; 587617, 2379059; 587436,
2379094; 587325, 2379169; 587179,
2379192; 587029, 2379276; 586874,
2379329; 586799, 2379342; 586764,
2379364; 586653, 2379452; 586503,

2379581; 586286, 2379678; 586242,
2379771; 586308, 2379948; 586428,
2380089; 586557, 2380147; 586721,
2380160; 586889, 2380186; 587127,
2380200; 587295, 2380208; 587508,
2380222; 587614, 2380222; 587817,
2380178; return to starting point.

(ii) **Note:** Map 74 follows:



(75) Oahu 4—*Melicope pallida*—a (854
ha; 2,111 ac)

(i) Unit consists of the following 60
boundary points: Start at 589777,
2380936; 589797, 2380951; 589984,
2380951; 590370, 2380907; 590625,
2380855; 590896, 2380791; 591007,
2380799; 591152, 2380764; 591657,
2380042; 591778, 2379883; 591708,

2379867; 591489, 2379879; 590896,
2379887; 590645, 2379923; 590318,
2379927; 589996, 2379927; 589850,
2379946; 589851, 2379932; 589475,
2379972; 589084, 2379988; 588459,
2380033; 587823, 2380058; 587497,
2380083; 587377, 2380073; 587131,
2380093; 586901, 2380138; 586520,
2380233; 586079, 2380388; 585871,

2380488; 585869, 2380479; 585809,
2380534; 585548, 2380889; 585238,
2381315; 585107, 2381481; 585052,
2381586; 584977, 2381806; 584872,
2381891; 584777, 2381997; 584726,
2382157; 584716, 2382428; 584736,
2382653; 584812, 2382818; 584992,
2382873; 585177, 2382808; 585443,
2382708; 585653, 2382648; 585734,