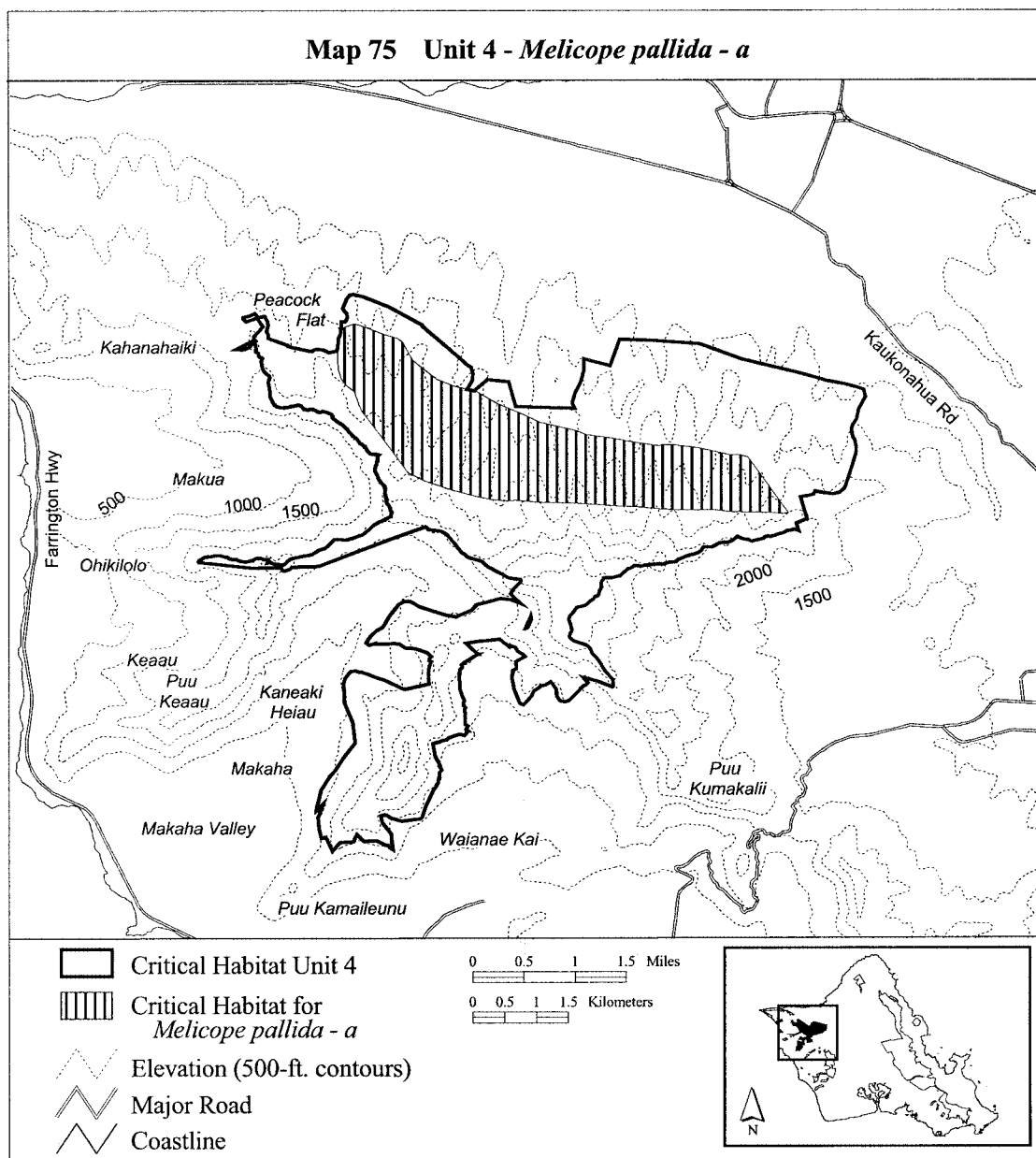


2382583; 585794, 2382473; 585889,
2382302; 586009, 2382202; 586281,
2381985; 586535, 2381886; 586896,

2381796; 587227, 2381611; 587617,
2381441; 587888, 2381320; 588459,
2381180; 588619, 2381120; 589010,

2381065; 589376, 2381000; return to
starting point.
(ii) **Note:** Map 75 follows:



(76) Oahu 4—*Neraudia angulata*—b (90 ha; 222 ac)

(i) Unit consists of the following 8 boundary points: Start at 584778,

2382903; 585296, 2382829; 586055,
2382495; 585203, 2381848; 585000,
2381829; 584778, 2382033; 584648,

2382255; 584740, 2382533; return to
starting point.

(ii) **Note:** Map 76 follows: