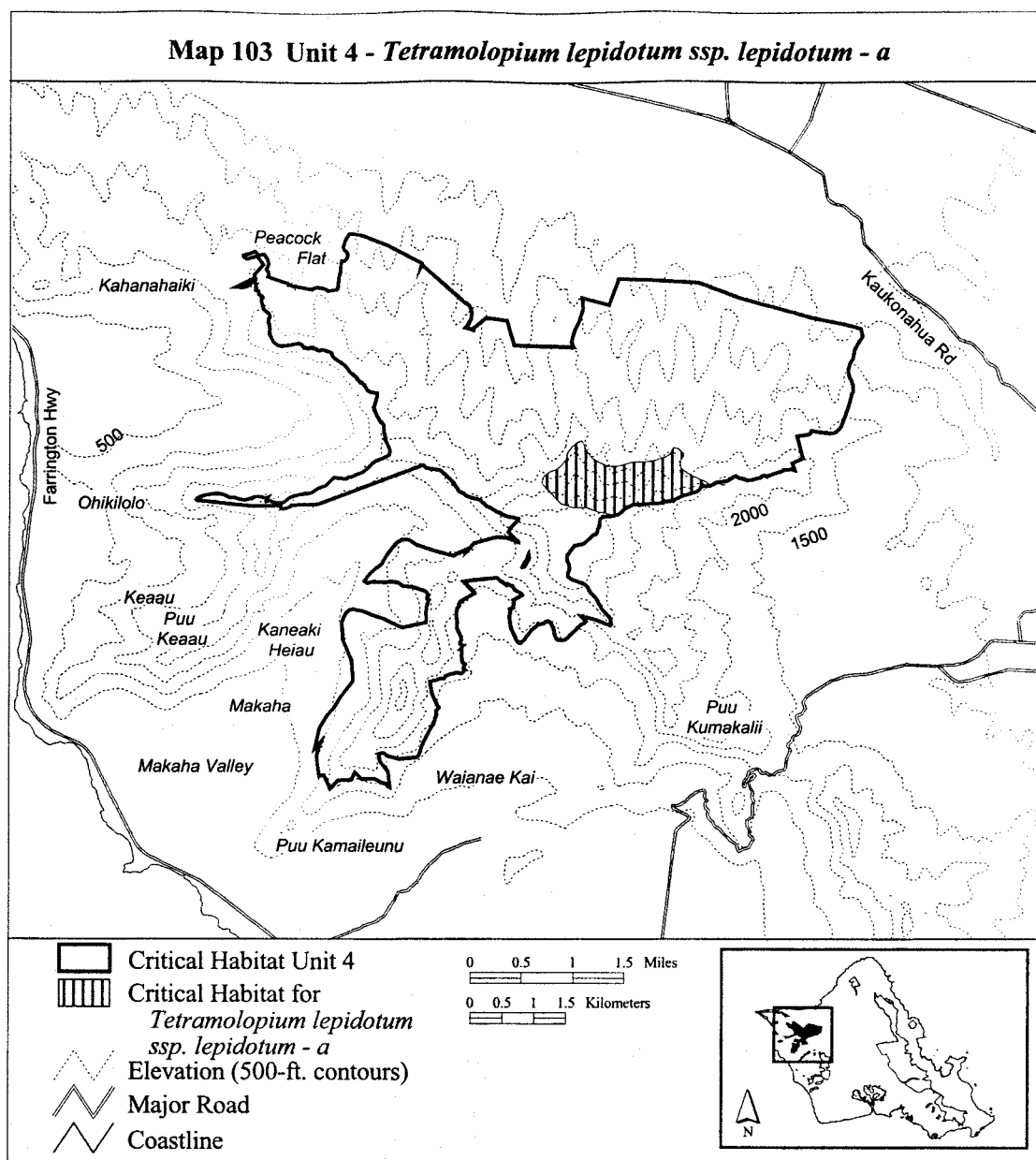


2379847; 588408, 2379935; 588491,
2380023; return to starting point.

(ii) **Note:** Map 103 follows:



(104) Oahu 4—*Tetramolopium lepidotum* ssp. *lepidotum*—b (23 ha; 56 ac)

(i) Unit consists of the following 66 boundary points: Start at 587816, 2377513; 587792, 2377572; 587790, 2377601; 587795, 2377624; 587819, 2377630; 587851, 2377630; 587871, 2377624; 587880, 2377589; 587880, 2377548; 587912, 2377519; 587945, 2377490; 588021, 2377481; 588094, 2377490; 588167, 2377490; 588269, 2377469; 588360, 2377446; 588465,

2377408; 588541, 2377349; 588550, 2377305; 588553, 2377253; 588544, 2377215; 588526, 2377162; 588494, 2377118; 588430, 2377092; 588398, 2377045; 588354, 2377007; 588322, 2376955; 588290, 2376955; 588275, 2376981; 588275, 2377007; 588278, 2377034; 588307, 2377072; 588342, 2377145; 588342, 2377183; 588348, 2377232; 588342, 2377256; 588301, 2377285; 588243, 2377291; 588173, 2377285; 588129, 2377279; 588100, 2377300; 588029, 2377341; 587947, 2377343; 587880, 2377343; 587790,

2377297; 587763, 2377247; 587775, 2377186; 587740, 2377156; 587702, 2377115; 587696, 2377074; 587667, 2377045; 587632, 2377057; 587617, 2377083; 587614, 2377115; 587614, 2377148; 587629, 2377183; 587646, 2377206; 587649, 2377235; 587632, 2377253; 587629, 2377273; 587629, 2377297; 587629, 2377314; 587629, 2377341; 587655, 2377376; 587699, 2377417; 587746, 2377440; return to starting point.

(ii) **Note:** Map 104 follows: