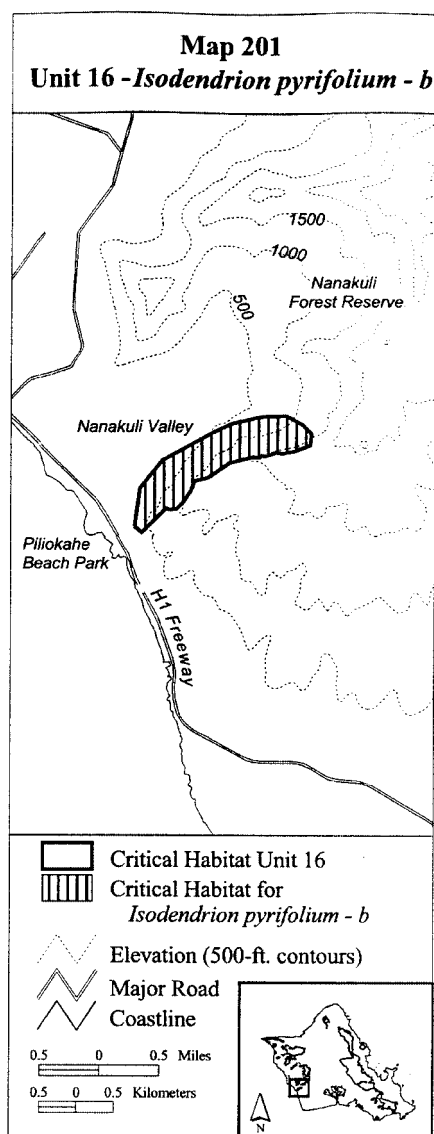


(201) Oahu 16—*Isodendron pyriformum*—b (129 ha; 319 ac)

(i) Unit consists of the following 27 boundary points: Start at 589674, 2363678; 589752, 2364203; 590044, 2364573; 590689, 2364934; 590964, 2365071; 591394, 2365166; 591712, 2365175; 591919, 2365063; 592048, 2364934; 592031, 2364779; 591841, 2364702; 591661, 2364667; 591575, 2364684; 591436, 2364630; 591377, 2364641; 591346, 2364612; 591265, 2364624; 590956, 2364547; 590672, 2364349; 590483, 2364289; 590427, 2364155; 590381, 2364088; 590344, 2364028; 590236, 2363915; 590142, 2363906; 590096, 2363919; 589769, 2363592; return to starting point.

(ii) Note: Map 201 follows:

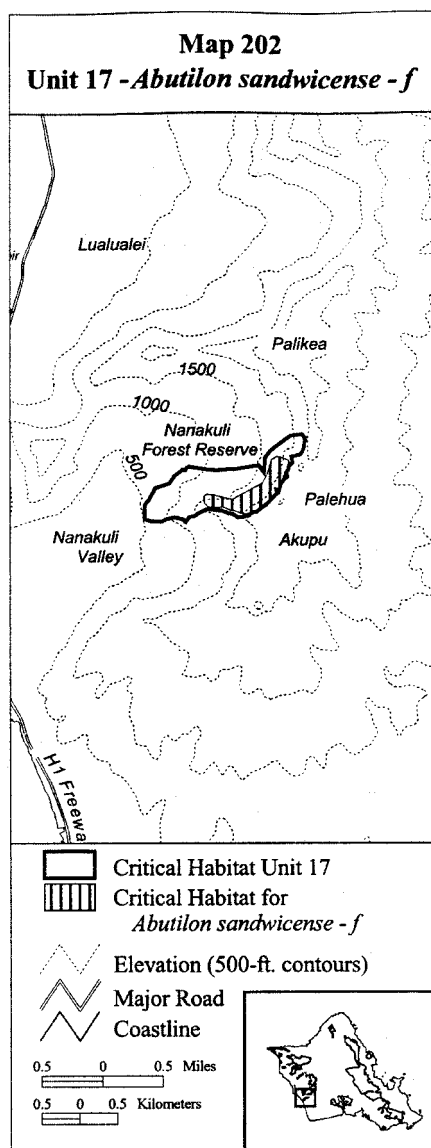


(202) Oahu 17—*Abutilon sandwicense*—f (30 ha; 74 ac)

(i) Unit consists of the following 35 boundary points: Start at 592994,

2366343; 592976, 2366353; 592994, 2366336; 593014, 2366317; 592998, 2366299; 592891, 2366183; 592730, 2366057; 592556, 2366026; 592434, 2366070; 592410, 2366082; 592411, 2366067; 592292, 2366117; 592150, 2366120; 592089, 2366117; 592037, 2366172; 592025, 2366265; 592072, 2366291; 592156, 2366282; 592272, 2366253; 592402, 2366227; 592815, 2366444; 592814, 2366444; 592869, 2366563; 592895, 2366650; 592924, 2366746; 592999, 2366801; 593089, 2366775; 593150, 2366749; 593167, 2366705; 593157, 2366664; 593144, 2366609; 593098, 2366549; 593089, 2366526; 593054, 2366433; 593025, 2366325; return to starting point.

(ii) Note: Map 202 follows:

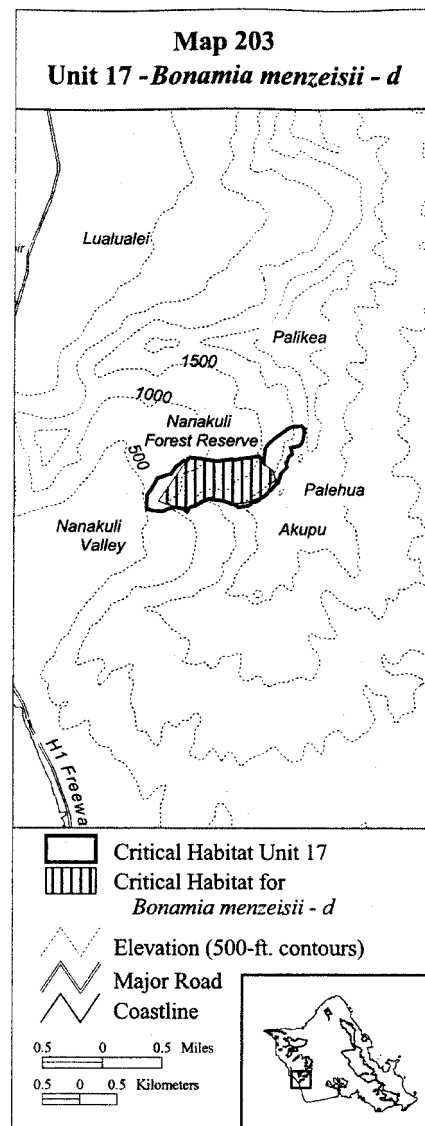


(203) Oahu 17—*Bonamia menziesii*—d (77 ha; 191 ac)

(i) Unit consists of the following 17 boundary points: Start at 591812,

2366666; 592269, 2366597; 592755, 2366681; 592869, 2366536; 592937, 2366491; 592983, 2366354; 592922, 2366301; 592854, 2366149; 592580, 2366042; 592390, 2366027; 592124, 2366118; 591828, 2365981; 591790, 2365921; 591743, 2365955; 591626, 2365984; 591501, 2366027; 591402, 2366065; return to starting point.

(ii) Note: Map 203 follows:



(204) Oahu 17—*Isodendron pyriformum*—c (73 ha; 181 ac)

(i) Unit consists of the following 22 boundary points: Start at 591235, 2365957; 591239, 2366138; 591300, 2366224; 591386, 2366378; 591566, 2366439; 591626, 2366525; 591738, 2366619; 591962, 2366602; 592194, 2366611; 592375, 2366636; 592452, 2366619; 592598, 2366482; 592676, 2366052; 592624, 2366000; 592478, 2365983; 592383, 2366052; 592031, 2366103; 591910, 2366000; 591669,