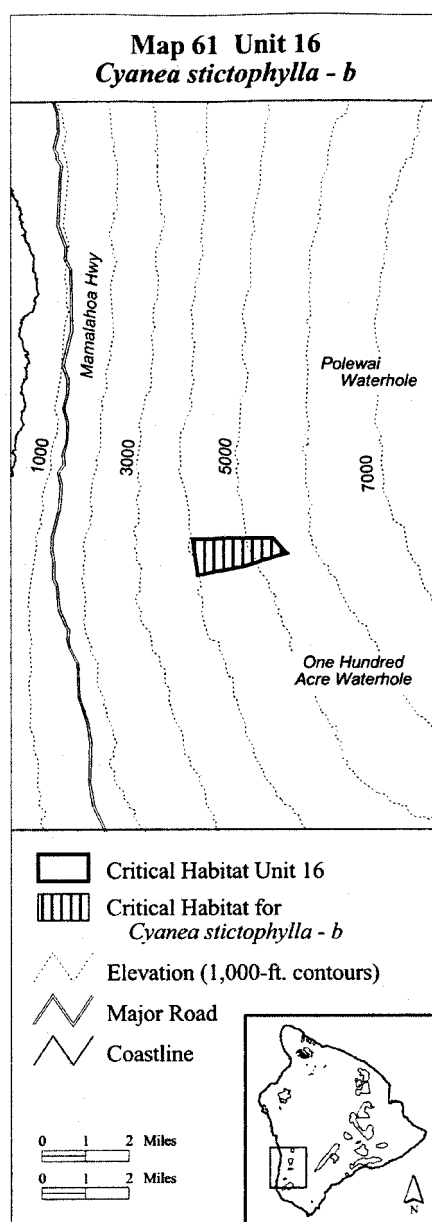


(61) Hawaii 16—*Cyanea stictophylla*—b (327 ha, 809 ac)

(i) Unit consists of the following five boundary points: Start at 206085, 2130525; 204548, 2130013; 202838, 2129682; 202649, 2131030; 205588, 2131077; return to starting point.

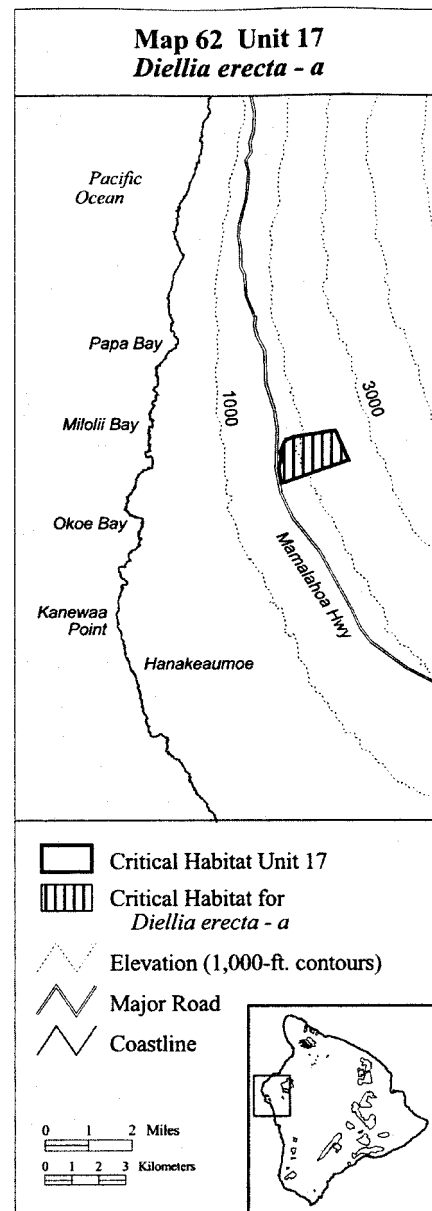
(ii) **Note:** Map 61 follows:



(62) Hawaii 17—*Diellia erecta*—a (329 ha, 814 ac)

(i) Unit consists of the following nine boundary points: Start at 199021, 2121439; 198916, 2122019; 199049, 2122319; 199008, 2122707; 199063, 2122847; 199186, 2123092; 199520, 2123204; 201031, 2123446; 201505, 2122323; return to starting point.

(ii) **Note:** Map 62 follows:



(63) Hawaii 17—*Flueggea neowawraea*—a (327 ha, 807 ac)

(i) Unit consists of the following eight boundary points: Start at 199031, 2121453; 198919, 2122094; 199007, 2122357; 198981, 2122641; 199188, 2123085; 199474, 2123194; 201018, 2123445; 201491, 2122325; return to starting point.

(ii) **Note:** Map 63 follows: