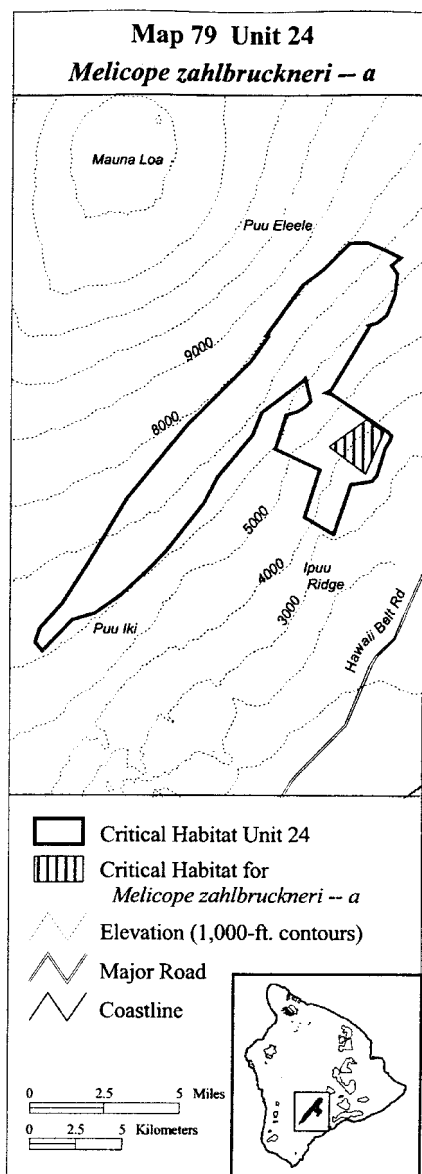


(79) Hawaii 24—*Melicope zahlbruckneri*—a (434 ha, 1,072 ac)

(i) Unit consists of the following four boundary points: Start at 238867, 2139105; 240894, 2140601; 241788, 2139910; 240819, 2137611; return to starting point.

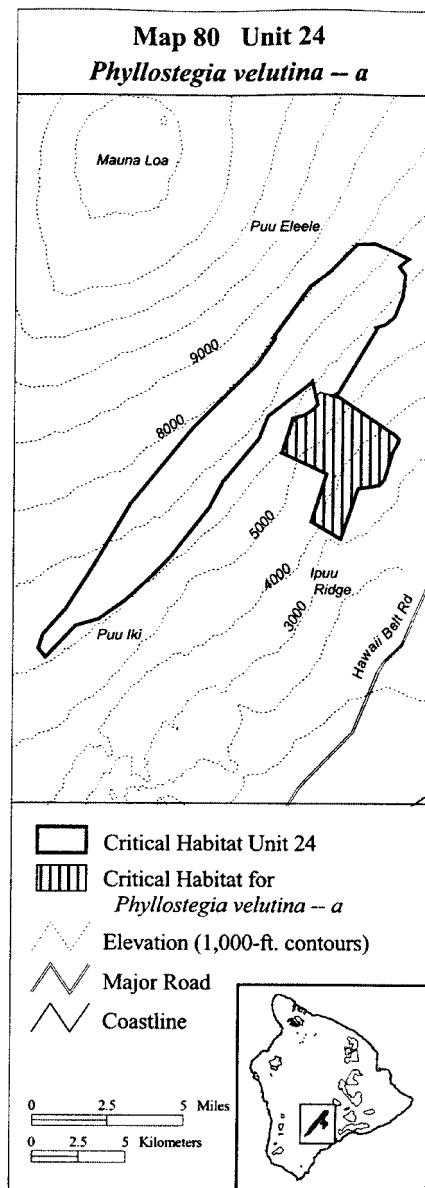
(ii) **Note:** Map 79 follows:



(80) Hawaii 24—*Phyllostegia velutina*—a (2,466 ha, 6,093 ac)

(i) Unit consists of the following 18 boundary points: Start at 238962, 2141970; 242007, 2139925; 242207, 2139714; 242118, 2139436; 241893, 2139030; 241440, 2137533; 241162, 2137224; 240062, 2137024; 239123, 2134346; 237550, 2135268; 238350, 2137847; 235994, 2138947; 236552, 2140823; 237172, 2141003; 237594, 2141281; 237850, 2141570; 237828, 2142070; 238005, 2142204; return to starting point.

(ii) **Note:** Map 80 follows:



(81) Hawaii 24—*Plantago hawaiensis*—a (1,348 ha, 3,330 ac)

(i) Unit consists of the following 14 boundary points: Start at 239891, 2150141; 240843, 2150153; 241675, 2149824; 242668, 2149348; 241709, 2148593; 240533, 2148496; 240027, 2147666; 238765, 2146944; 238485, 2145606; 237676, 2145240; 237021, 2144491; 235459, 2145119; 237410, 2147869; 238480, 2148664; return to starting point.

(ii) **Note:** Map 81 follows: