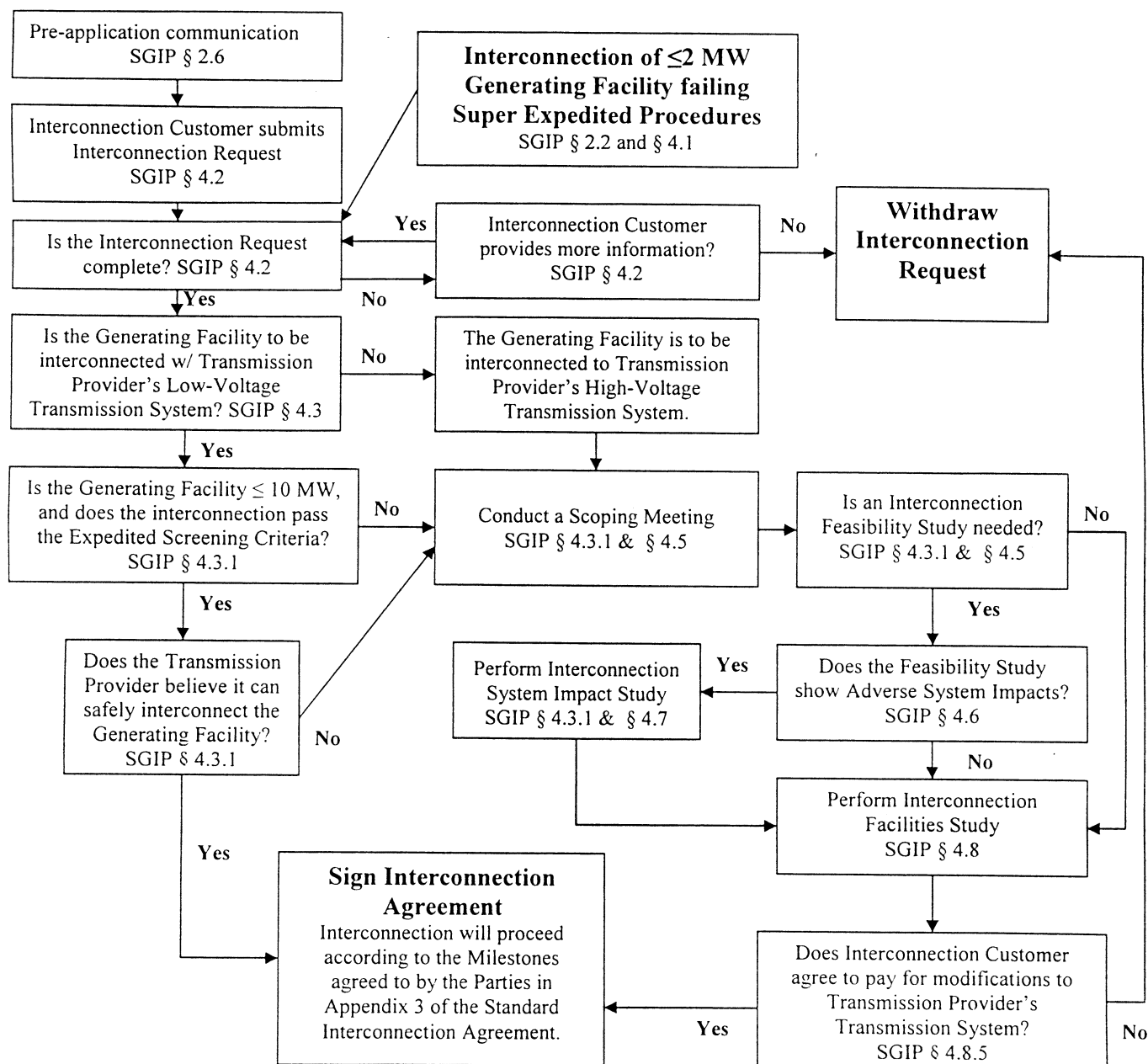


Chart 3

Flow Chart of Procedures for Interconnecting a Small Generating Facility to a High-Voltage Transmission System and a Small Generating Facility Larger than 2 MW to a Low-Voltage Transmission System



BILLING CODE 6718-01-C

Appendix 1

**Super-Expedited Screening Criteria
(Applicable to Generating Facilities No
Larger than 2 MW)**

1.1 For interconnection of the Generating Facility to a radial Low-Voltage circuit, the

aggregate new generation capacity on the circuit shall not exceed five percent of the total circuit annual peak load as most recently measured at the substation.

1.2 For interconnection of the Generating Facility to the load side of Spot Network protectors, the Generating Facility must utilize an inverter-based equipment package

and, together with other inverter-based generation, shall not exceed the smaller of five percent of a Spot Network's maximum load or 50 kW.

1.3 The Generating Facility, in aggregation with other generation on the Low-Voltage circuit, shall not contribute more than ten percent to the circuit's