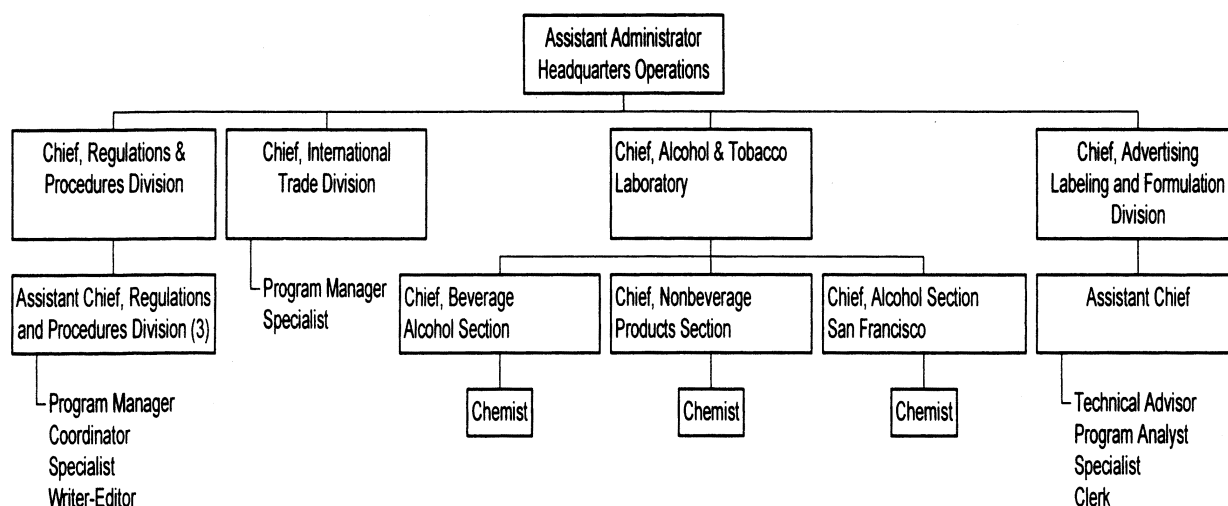


## Headquarters Operations



Organizational charts as of 1/24/2003.

Charts are subject to change.

[FR Doc. 03-4421 Filed 2-24-03; 8:45 am]  
BILLING CODE 4810-31-C

### DEPARTMENT OF THE TREASURY

#### Customs Service

#### Announcement of Changes to the Eligibility Requirements and Application Process for Participation in Remote Location Filing Prototype Two

**AGENCY:** Customs Service, Department of the Treasury.

**ACTION:** General notice.

**SUMMARY:** This notice announces two changes to Remote Location Filing Prototype Two. One change provides that line release entries are no longer permitted under this prototype. The other change simplifies the application process for participation in the prototype to a one-step procedure that will consolidate information collection and expedite application processing at Customs Headquarters. Current RLF filers do not need to re-apply to Customs Headquarters to continue participation in RLF Prototype Two, nor will they be required to submit additional port applications.

**DATES:** The changes to Customs second prototype of the Remote Location Filing program will go into effect February 25, 2003. Comments concerning these changes, or any other aspect of RLF,

may be submitted to Customs at any time. Applications for participation in RLF Prototype Two will be accepted throughout the duration of the test program.

**ADDRESSES:** Written comments and applications to participate in the prototype should be addressed to the Remote Filing Team, Office of Field Operations, U.S. Customs Service, 1300 Pennsylvania Avenue, NW., Room 5.2-B, Washington, DC 20229. Comments may also be submitted via e-mail to [Lisa.k.santana@customs.treas.gov](mailto:Lisa.k.santana@customs.treas.gov).

**FOR FURTHER INFORMATION CONTACT:** For systems or automation issues: Eloisa Calafell (305) 869-2780 or Jackie Jegels (301) 893-6717. For operational or policy issues: Lisa K. Santana at (202) 927-4342 or via e-mail at [Lisa.k.santana@customs.treas.gov](mailto:Lisa.k.santana@customs.treas.gov).

#### SUPPLEMENTARY INFORMATION:

##### Background

*RLF Authorized by the National Customs Automation Program (NCAP)*

Title VI of the North American Free Trade Agreement Implementation Act, Pub. L. 103-182, 107 Stat. 2057 (December 8, 1993), contains provisions pertaining to Customs Modernization (107 Stat. 2170). Subpart B of Title VI of the Act concerns the National Customs Automation Program (NCAP), an electronic system for the processing of commercial imports. Within subpart

B, section 631 of the Act added section 414 (19 U.S.C. 1414), which provides for Remote Location Filing (RLF), to the Tariff Act of 1930, as amended. RLF permits an eligible NCAP participant to elect to file electronically a formal or informal consumption entry with Customs from a remote location within the Customs territory of the United States other than the port of arrival, or from within the port of arrival with a requested designated examination site outside the port of arrival.

#### RLF Prototype Two

In accordance with § 101.9(b) of the Customs Regulations (19 CFR 101.9(b)), Customs has developed and tested two RLF prototypes.

RLF Prototype Two commenced on January 1, 1997. See document published in the **Federal Register** (61 FR 60749) on November 29, 1996. On December 7, 1998, Customs announced in the **Federal Register** (63 FR 67511) that Prototype Two would remain in effect until Customs concluded the prototype by notice in the **Federal Register**. On July 6, 2001, Customs announced in the **Federal Register** (66 FR 35693) changes to the eligibility requirements for participation in RLF Prototype Two which mandated that customs brokers hold a national permit. That notice also announced that the provisions of part 111 of the Customs Regulations (which set forth the regulations providing for the licensing