

Partita II

Clavierübung part I

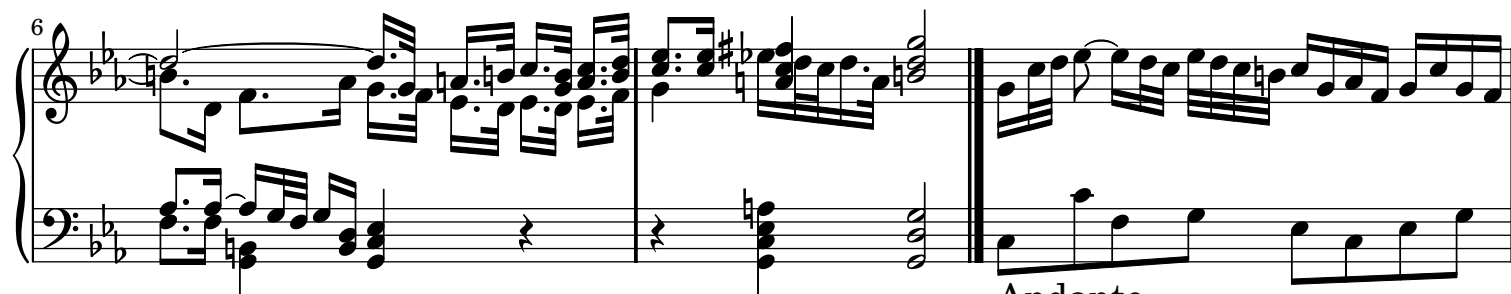
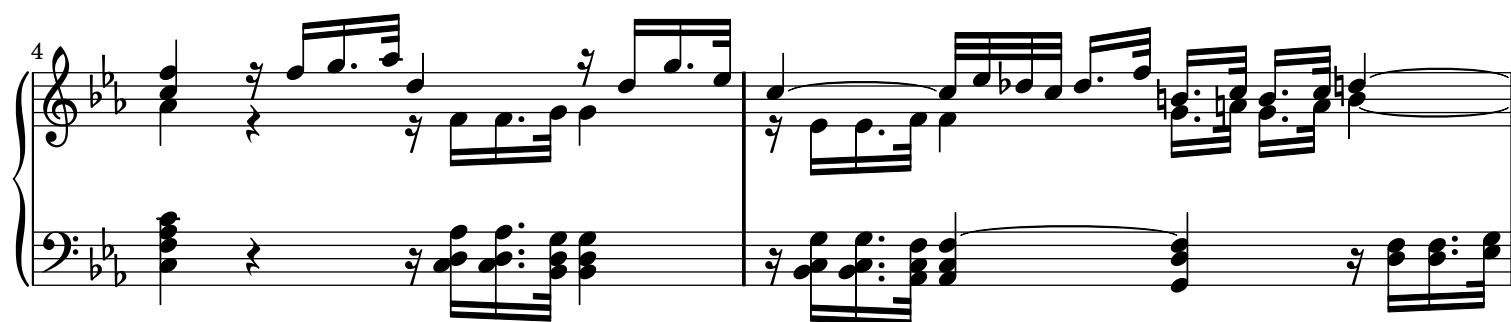
J. S. Bach

BWV 826

1. Sinfonia



Grave Adagio



Andante



11

Measures 11 and 12 of a piano piece in B-flat major. Measure 11 features a complex right-hand melody with sixteenth-note runs and a sustained bass line. Measure 12 continues the right-hand melody with more sixteenth-note patterns, while the bass line remains simple and steady.

13

Measures 13 and 14. Measure 13 shows a continuation of the right-hand melody with intricate sixteenth-note figures. Measure 14 introduces a slight change in the right-hand pattern, while the bass line maintains its consistent rhythmic accompaniment.

15

Measures 15 and 16. Measure 15 features a right-hand melody with a mix of eighth and sixteenth notes. Measure 16 includes a whole rest in the right hand, with the focus shifting to the bass line which has a more active, moving pattern.

17

Measures 17 and 18. Measure 17 contains a dense right-hand melody with many sixteenth notes. Measure 18 continues this texture, with the bass line providing a steady accompaniment.

19

Measures 19 and 20. Measure 19 features a right-hand melody with a long, flowing line. Measure 20 continues the right-hand melody with similar sixteenth-note patterns, while the bass line remains simple.

21

Measures 21 and 22. Measure 21 shows a right-hand melody with some chromatic movement, including a sharp sign. Measure 22 continues the right-hand melody, with the bass line providing a steady accompaniment.

23

System 1, measures 23-24. The key signature is B-flat major (two flats). Measure 23 features a treble staff with a complex melodic line including a trill on G4 and a descending eighth-note scale, and a bass staff with a simple eighth-note accompaniment. Measure 24 continues the melodic development in the treble and the accompaniment in the bass.

25

System 2, measures 25-26. Measure 25 shows a continuation of the melodic patterns in the treble and the accompaniment in the bass. Measure 26 features a more active bass line with sixteenth-note runs.

27

System 3, measures 27-28. Measure 27 continues the melodic and accompanimental themes. Measure 28 features a sustained chord in the bass staff and a melodic phrase in the treble staff.

29

System 4, measures 29-31. Measure 29 features a trill in the treble and a sustained note in the bass. Measures 30-31 show a change in the bass line with a 3/4 time signature indicated.

32

System 5, measures 32-35. Measure 32 features a melodic phrase in the treble and a sustained note in the bass. Measures 33-35 show a continuation of the melodic and accompanimental themes.

36

System 6, measures 36-39. Measure 36 features a melodic phrase in the treble and a sustained note in the bass. Measures 37-39 show a continuation of the melodic and accompanimental themes.

40

Measures 40-42 of a musical score in B-flat major (two flats). The treble staff features a complex melody with many beamed sixteenth and thirty-second notes. The bass staff provides a steady accompaniment with eighth and sixteenth notes. Measure 42 ends with a double bar line.

43

Measures 43-45 of the musical score. Measures 43 and 44 contain a key signature change to C major (no sharps or flats). The melody in the treble staff continues with beamed notes, while the bass staff maintains its accompaniment. Measure 45 ends with a double bar line.

46

Measures 46-48 of the musical score in C major. The treble staff melody includes a sharp sign (F#) in measure 47. The bass staff continues with its accompaniment. Measure 48 ends with a double bar line.

49

Measures 49-51 of the musical score. Measures 49 and 51 feature a repeat sign (double bar line with two dots) in the bass staff. The treble staff continues with its melody. Measure 51 ends with a double bar line.

52

Measures 52-54 of the musical score. Measures 52 and 54 feature a repeat sign in the bass staff. The treble staff continues with its melody. Measure 54 ends with a double bar line.

55

Measures 55-57 of the musical score. Measures 55 and 57 feature a repeat sign in the bass staff. The treble staff continues with its melody. Measure 57 ends with a double bar line.

58

Measures 58-60 of a musical score in B-flat major (two flats). The right hand features a continuous eighth-note melody. The left hand provides a rhythmic accompaniment with eighth-note patterns and rests.

61

Measures 61-63 of the musical score. The right hand continues with a steady eighth-note melody. The left hand features a more active eighth-note accompaniment.

64

Measures 64-66 of the musical score. The right hand melody includes some eighth-note rests. The left hand accompaniment remains consistent with eighth-note patterns.

67

Measures 67-69 of the musical score. The right hand melody continues with eighth notes. The left hand accompaniment features a steady eighth-note pattern.

70

Measures 70-72 of the musical score. The right hand melody includes a sharp sign (F#) in measure 71. The left hand accompaniment continues with eighth-note patterns.

73

Measures 73-75 of the musical score. The right hand melody features a half-note rest in measure 74. The left hand accompaniment continues with eighth-note patterns.

76

79

82

85

88

Sheet music from www.MutopiaProject.org • Free to download, with the freedom to distribute, modify and perform.

Typeset using www.LilyPond.org by Carl Bolstad. Reference: Mutopia-2006/08/21-602

This sheet music has been placed in the public domain by the typesetter, for details see: <http://creativecommons.org/licenses/publicdomain>