

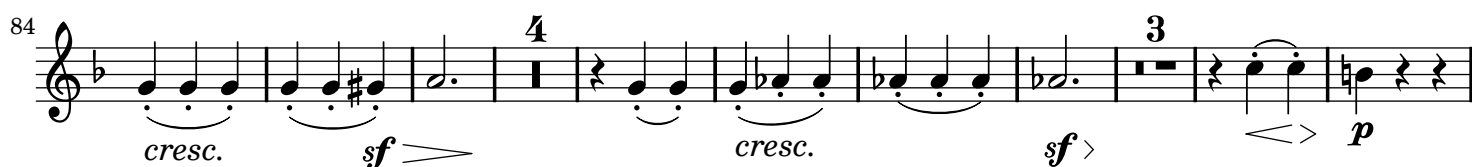
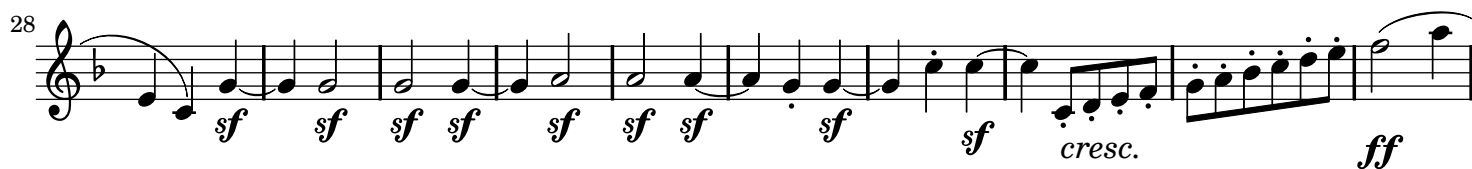
# Symphony No. 3 in E $\flat$ Major

Eroica  
Clarinet II

Ludwig van Beethoven (1770-1827)

Op. 55

Allegro con brio ( $\text{♩} = 60$ )



155 **2** **31** **F** **4**  
*cresc. ff*

202 **8**  
*ff* *p*

220 **G** **26** **H** **16**  
*ff* *sf* *ff* *sf*

272 *sf sf sf sf sf sf sf sf sf sf sf sf sf sf sf sf sf*

283 **I** **32**  
*f f sf sf sf*

324 **K** **16**  
*ff p sf sf*

350 **2**  
*cresc.*

362 **L** **11**  
*sf sf ff pp*

385 **2** **2** **6** **M** **17**  
*pp pp f ff p*

423 **2**  
*cresc. decr. pp cresc. sf*

435 *sf sf più f ff sf sf*

447 **N** 11 *sf sf p cresc.*

468 **O** 3 7 *f cresc.*

487 **P** 4 *ff p cresc. sf cresc.*

500 **Q** 3 7 *sf > p < > cresc. f sf sf sf*

519 2 *sf ff sf sf*

530 **R** *ff sf sf sf sf sf sf sf*

541 *sfp cresc. ff f*

552 **S** 5 *f f f p p*

568 9 10 *pp cresc. p sf*

597 **T** 27 *sf p cresc.*

634 **U** 7 *p*

648 **V** *cresc.* *sf*

655 *sf* *f*

663 *sf* *sf* *sf*

675 **W** *ff* *p* *cresc.*

685 *f* *f* *f* *f* *f* *f* *ff*

## Marcia funebre

Adagio assai (♩ = 80)

8 *p*

15 **A** 20 *decresc.* *p* *p* *cresc.* *f*

41 *p*

49 **B** *decresc.* *cresc.* *sf* *p* *cresc.* *f* *p* *p*

57 3 *f* *sf* *p* *sf* *f*

**C**

67 *p* *f* *cresc.* *ff* *sf* *sf* *sf* *sf* *sf*

10 18

## Minore

101 **3** **16** *f* *sf* *sf* *ff* **5** **D**

131 *sf* *ff* *sf* *sf*

139

146 *sf* *sf* *sf* **E** **2** *p*

154 **11** *ff* **4** **F** **5** *cresc.* *decresc.*

180 *p* *p* *cresc.* *sf* *p*

191 **2** **G** *p* *cresc.* *f* *p*

199 **3** *f* *sf* *p* *cresc.*

**H** 209 **17** *f* *cresc.* *p* *cresc.* *p* **15** *sf* *p*

## Scherzo

**A**

Allegro vivace (♩. = 116)

**30** **62** *ff* *sf*

100 *sf*

111  *p*

123  *f sf sf sf p p*

140  *p cresc.*

156  *cresc. ff f f f*

166  *f f f f* **Trio 30**

206  *p sf*

248  *pp f*

361  *ff sf sf*

371 

382  *p f ff* **Alla breve** (♩ = 116)

393  *p p*

409  *p cresc.*

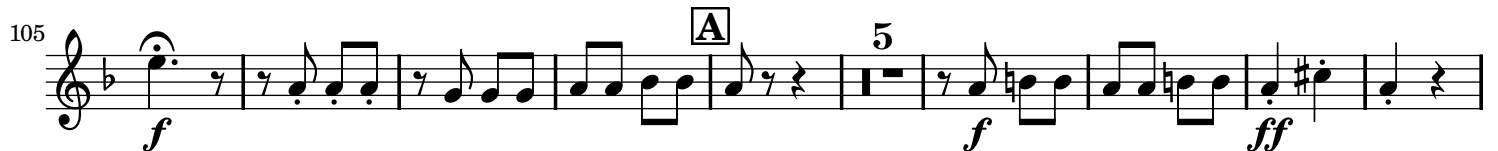
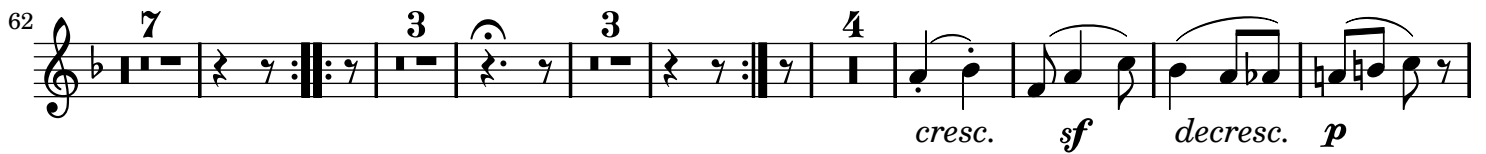
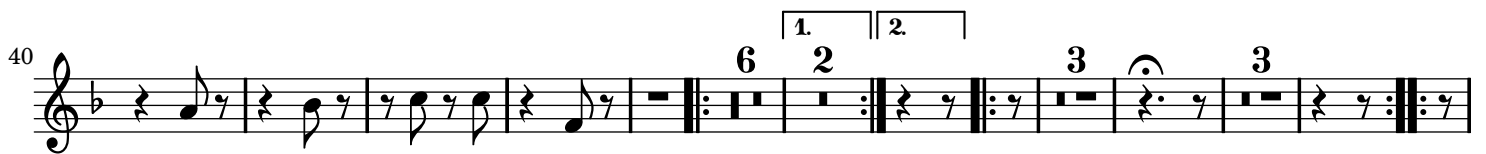
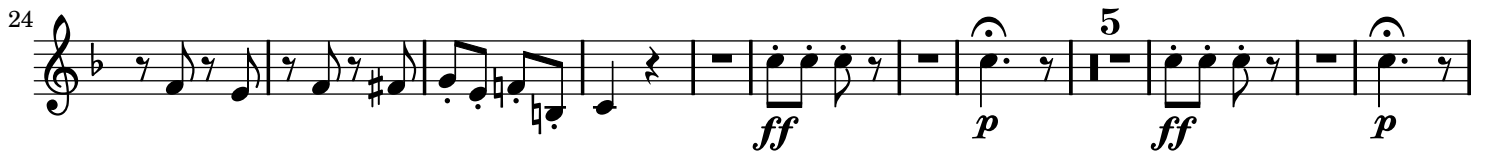
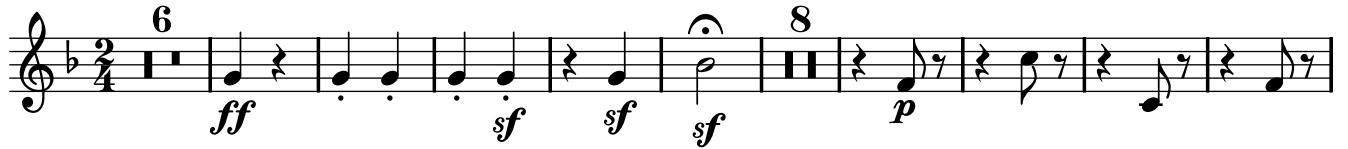
## Coda

6



## Finale

## Allegro molto (♩ = 76)







385 *sf sf sf*

393 *sf sf sf fp* **G**

400 *p cresc.*

411 *cresc. f sempre più f ff*

422 **10** **Presto (♩ = 116)** *ff*

439 *sf sf sf sf sf sf sf*

446 *sf sf sf sf sf sf sf sf*

452 *sf sf sf sf sf sf sf sf*

459 *sempre più f ff*

468