

OCTET

E-flat Major

Cello I

F. Mendelssohn-Bartholdy, Op. 20

Allegro moderato ma con fuoco

p *cresc. - f* *fp* *cresc. - - -*

8 *- f* *sf* *sf* *sf* *sf* *sf*

15 *sf* *p* *cresc. - - cresc. f* *ff* *p* **A**

23 *sf* *p* *cresc. - f* *dim. - p* **B**

29 *cresc. - - - f* *p* *cresc. - f*

38 *sf* *sf* *fp* *cresc. - - - f* *p* **C**

46 *dim. - - - - - pp* *< cresc. >* *p* *cresc.*

54 *f* *cresc. - - - - - ff* *fpp*

62 *sf pp* *p* *pizz.*

72 **D** **5**

86 *arco* *trm* *trm* *pizz.* *arco* *cresc.*

95 *f sf* *ff* *sempre ff* *f* **F**

108 *cresc.* *ff* **G** *f*

115 *sf*

122 *ff* 1.

129 *fp* *f* 2.

136 *sf* *sf* *sf*

142 **H** *ff*

148

154 *f* *dim.* *mf* *dim.* *p* **J**

162 *dim.* *pp* 9

178 **K**

194 **L** **6** *p* *cresc.* - - - - - *mf*

210 *cresc.* - - - - - *f*

215 *cresc.* - - - - - *ff* *sempre ff*

219 **M** *p* *cresc.* - - - - -

224 *f* *fp* *cresc.* - - - - - *f* *sf*

231 *sf* *p* *cresc.* - - - - - *f* *sf* *p* *dim.* - - *pp* **poco rit.**

243 **a tempo** *pizz.* **N** *p* *arco* *pp*

251

258 **O₂** *ff sf on fuoco* *sf* *ff* *f*

267 *ff* **P** *f*

274



281



287



299



307



317



Andante



17



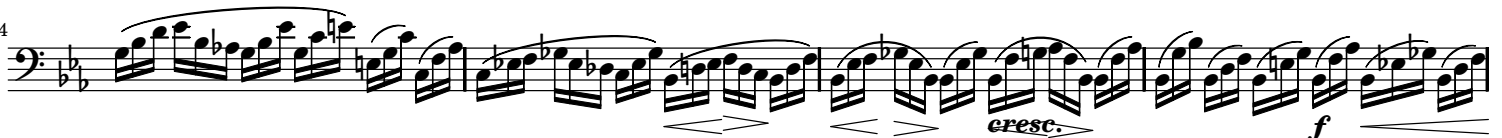
25



30



34



38



54 **E** *cresc.* - - - -

60 *cresc.* *cresc.* - - *f*

66 *pizz.* **F** *p* *arco*

72 **G** *pp*

83 **H**

91 *espress.* *pp* *arco*

Allegro leggerissimo

pizz. *pp* *arco*



76 **E**

87

96 **F** *stacc.*

107 **G** *p*

117

130 **H** *dim.* - - - - - *pp*

142 *pizz.* *arco*

151 **J** *tr*

159

172 **K**

182 **L**

190

198 **M**

206 **2**

214 *sf* *sf* *sf* **3** **0**

227 *pp*

233

239 *dim.*

Presto

4 *f*

12

23 **A** *ff*

35

46 **B** *fp* *cresc.*

58 **C** *mf* *cresc.* *f* *p* **5**

74 

83 

91 

105 

121 

139 

151 

158 

168 

189 **K 4**
f

201 **L**
ff

212 **M**
f

229 **N**
sf sf ff

244
sf sf sf sf sf sf sf

258 **O**
sf f

268 **P pizz.**
pp

280 **Q** *arco*
ff

297
ff

306 *sempre piu f* *ff*

315 **R**
ff

323 *sf*

333 S

346 T *f*

356 *sf*

368 U *sf* *sf* *sf* *sf*

382 *sf* *sf* V *p*

394 W 3 *p* *cresc.*

410 X *mf* *cresc.* *f* *cresc.* *ff*

422