

# Concerto for Horn in D Major, K. 412

## Basso

## Wolfgang Amadeus Mozart (1756-1791)

# Allegro

**Allegro**

*p*

8 *f* *f* *f* *f*

18 *p* **A**

25 *f* *p* *f*

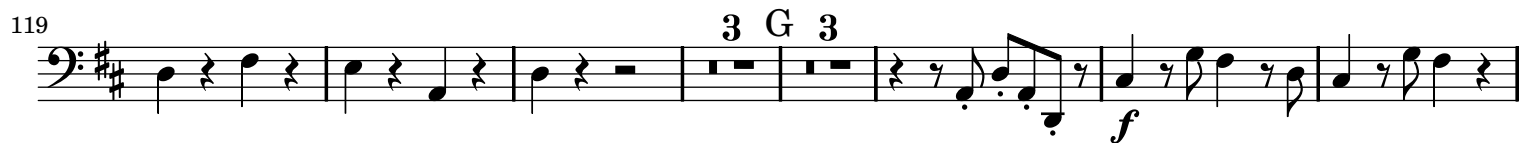
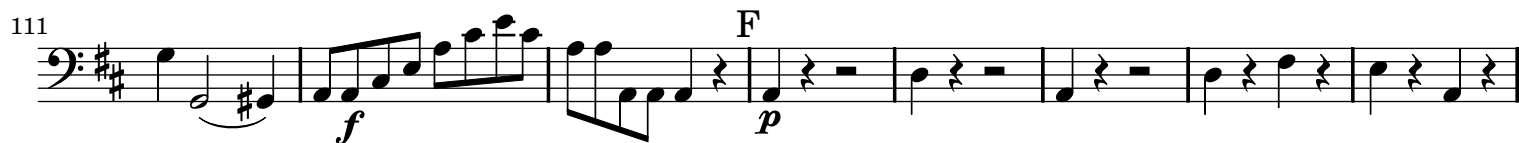
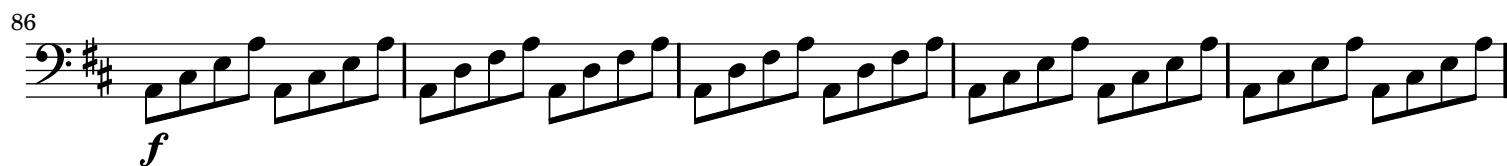
32 *p* *f* *p* *f* *p* **B**

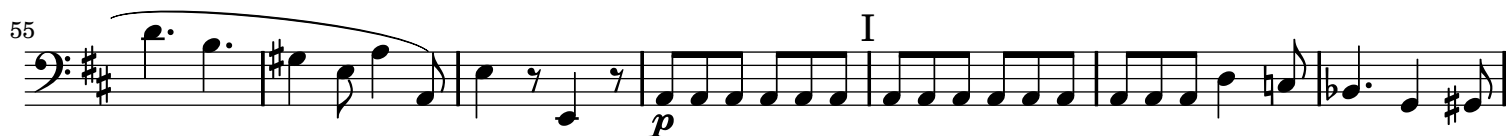
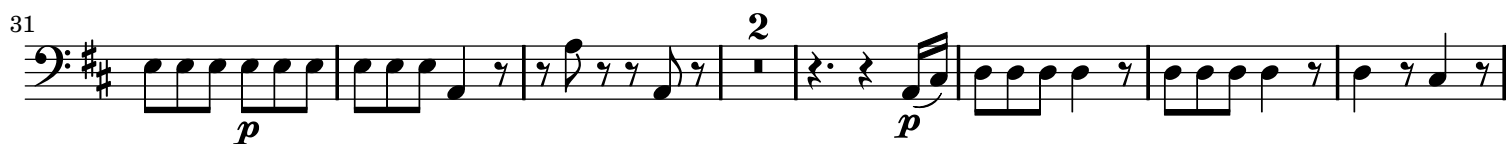
39 *f* *p*

46 *f* *p* *f* **C**

52

57



**Allegro**

69

79

86

94

101

107

115

121

128

134

The sheet music for the Basso part consists of ten staves of music, numbered 69 to 134. The key signature is two sharps (F# and C#). The music includes various dynamics: *f* (forte), *sf* (sforzando), *p* (piano), and *K* (crescendo). There are also markings for *L* (lento) and *K* (crescendo). The music features a variety of rhythmic patterns, including eighth notes, sixteenth notes, and quarter notes, as well as rests and slurs.