

String Quartet KV. 464 (nr. 18)

for 2 violins, viola and cello

Allegro.

W. A. MOZART (1756-1791)

Violino I.

7

15

27

34

41

48

55

p

f

p

f

p

f

f

f

61 *cresc.* *f*

67 *p*

73

81 *p* *f*

88 *p*

96 *f*

104 *p*

111 *cresc.*

119 *p*

126



134



142



149



156



163



170



177



189



196

204

211

219

225

231

238

246

255

p

p

cresc. *f*

p

f

f *p*

cresc. *f* *p*

262



Minuetto.

Violino I.



8



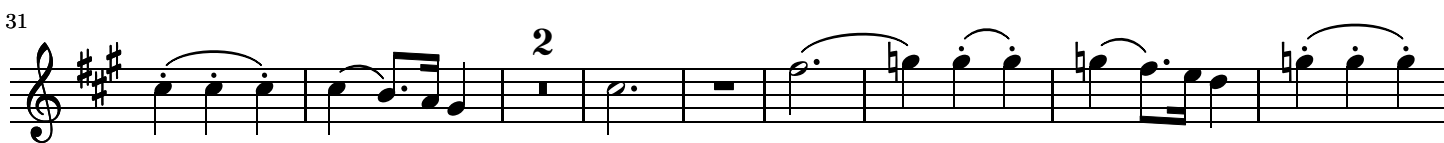
17



24



31



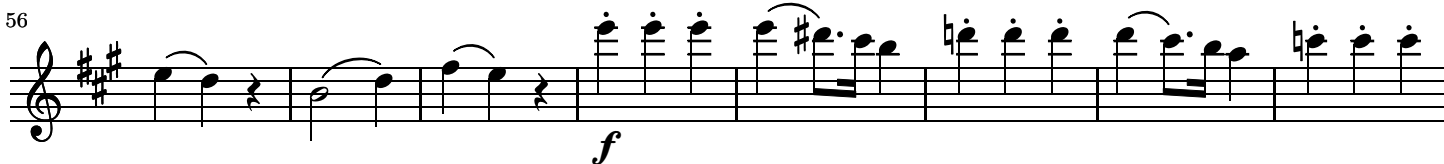
41

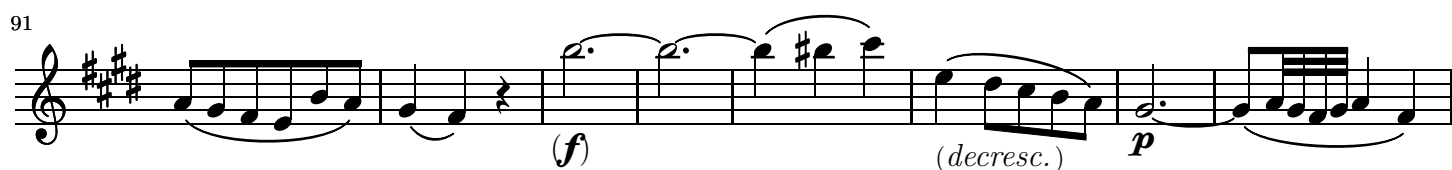


49



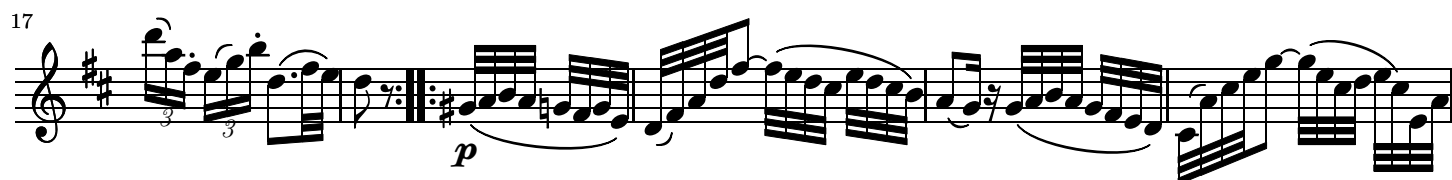
56





Andante.

M.D.C.



22

Measures 22-29 of the musical score. The key signature is two sharps (F# and C#). The music features a complex, fast-paced melody with many beamed sixteenth and thirty-second notes. Dynamic markings include *f* (forte) at measure 22, *p* (piano) at measure 24, *f* at measure 25, *p* at measure 26, and *cresc.* (crescendo) at measure 28. The piece concludes with a double bar line at measure 29.

30

Measures 30-33 of the musical score. The melody continues with rapid sixteenth-note passages. Dynamic markings include *f* at measure 30, *p* at measure 31, *f* at measure 32, and *p* at measure 33.

34

Measures 34-39 of the musical score. The music features a series of rapid sixteenth-note runs. Dynamic markings include *f* at measure 34, *p* at measure 35, and *p* at measure 38. A triplet of eighth notes is marked with a '3' at measure 39.

40

Measures 40-45 of the musical score. The melody is characterized by fast sixteenth-note patterns. Dynamic markings include *fp* (fortissimo piano) at measure 41, *fp* at measure 42, *f* at measure 43, and a trill (*tr*) at measure 44. The piece ends with a double bar line at measure 45.

46

Measures 46-51 of the musical score. The music continues with rapid sixteenth-note passages. Dynamic markings include *fp* at measure 47, *fp* at measure 48, *f* at measure 49, and *fp* at measure 50. A triplet of eighth notes is marked with a '3' at measure 46.

52

Measures 52-60 of the musical score. The melody features a mix of sixteenth and eighth notes. Dynamic markings include *f* at measure 52, *p* at measure 54, and *p* at measure 59. A trill (*tr*) is present at measure 53, and a second ending bracket with a '2' is shown at measure 60.

61

Measures 61-68 of the musical score. The music concludes with a series of sixteenth-note passages. Dynamic markings include *cresc.* (crescendo) at measure 61 and *fp* at measure 62. The piece ends with a double bar line at measure 68.

68

cresc. *fp* *p*

75

p *f* *p*

89

f *p*

95

f *p*

102

f

110

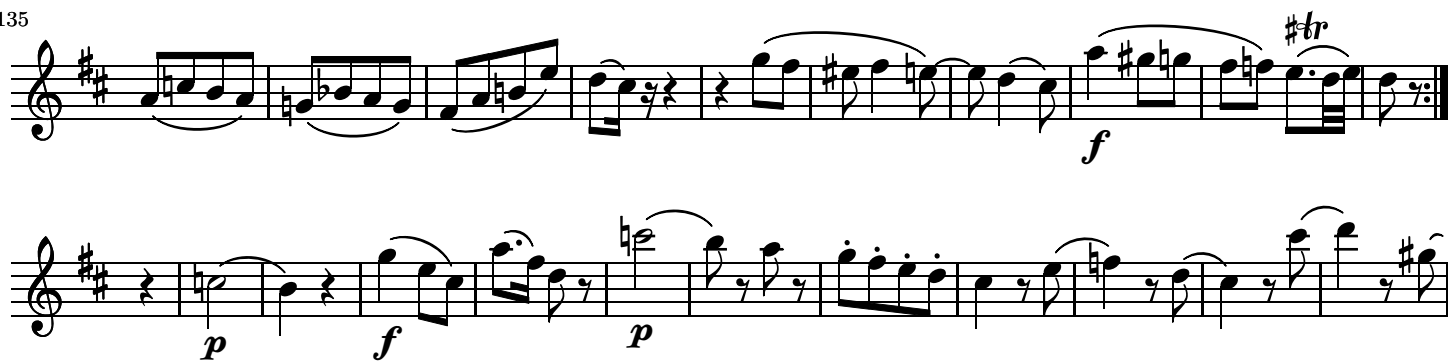
p

118

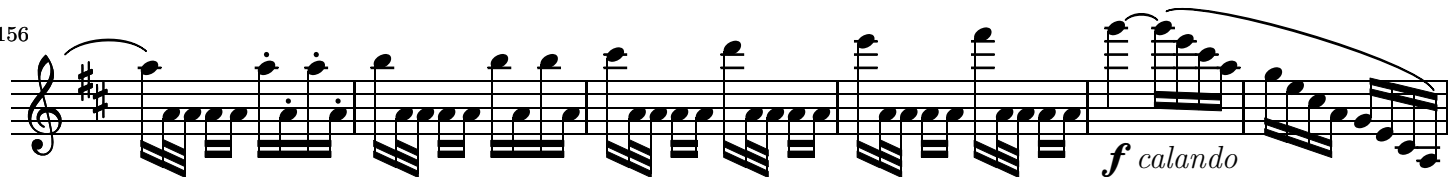
f *p*

p

135



156



162



170



177



Allegro.

Violino I.



7



14



20



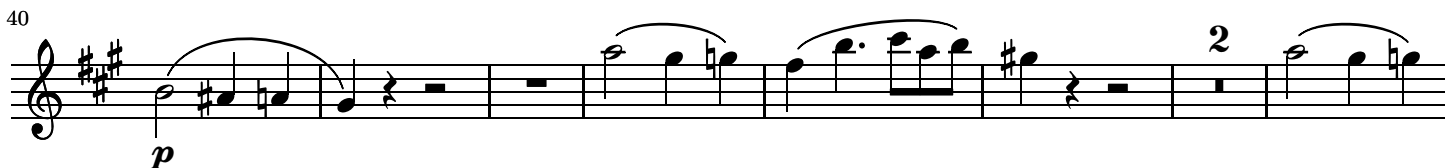
26



34



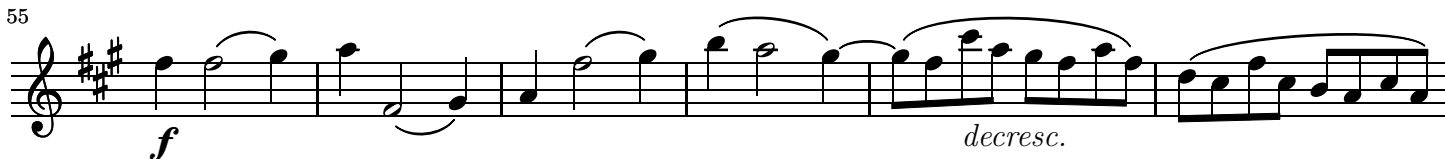
40



49



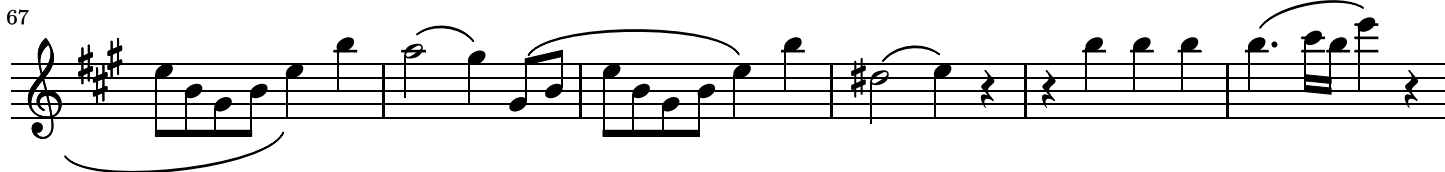
55



61

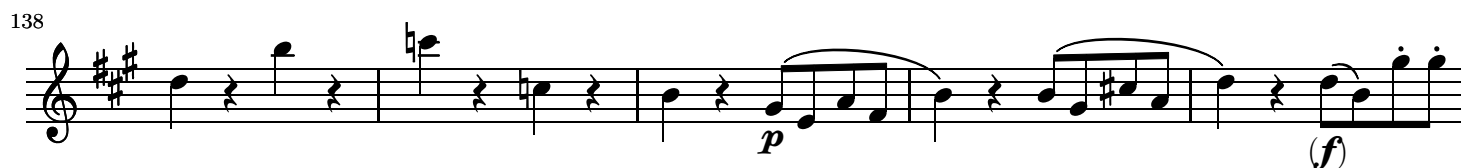
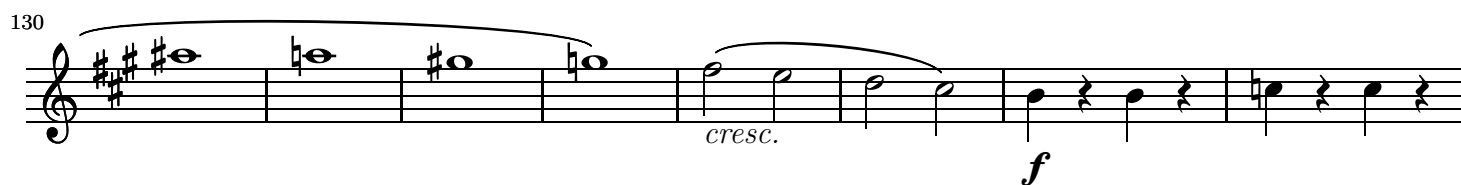
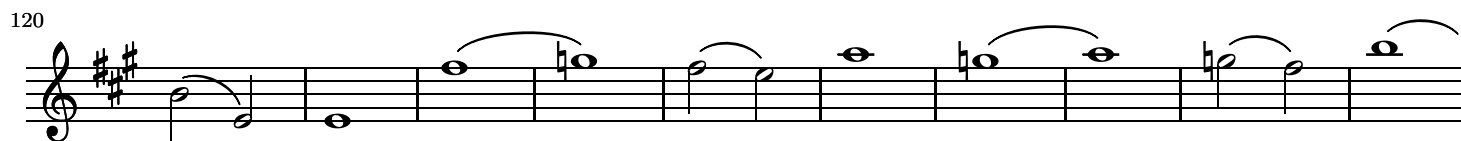
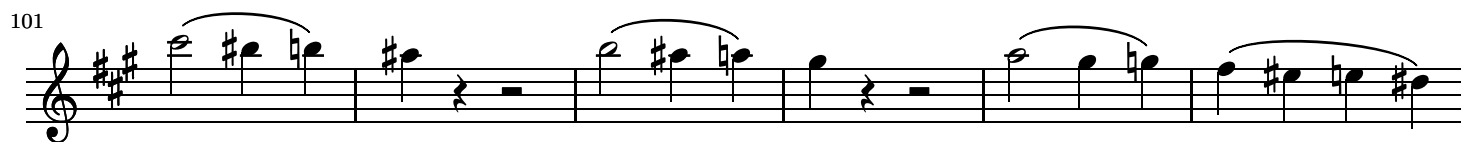
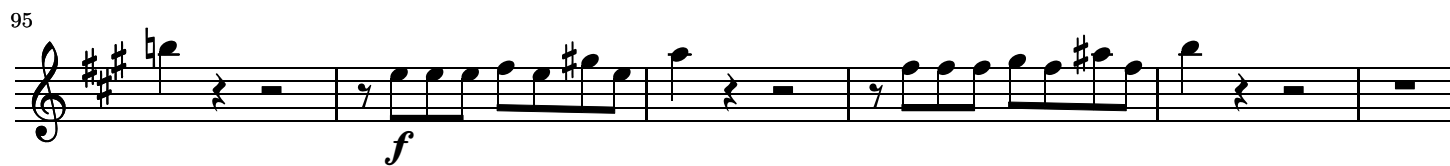


67



73





143

p

149

155

161

f

168

2

176

sf p sf p

182

sf p p

189

2

197

cresc. f decresc.

204

210

215

220

226

232

238

245

250

256

