

[1.21] TI-89 internal photographs

In case you're curious, the photographs in this tip show a disassembled TI-89, hardware version 1.

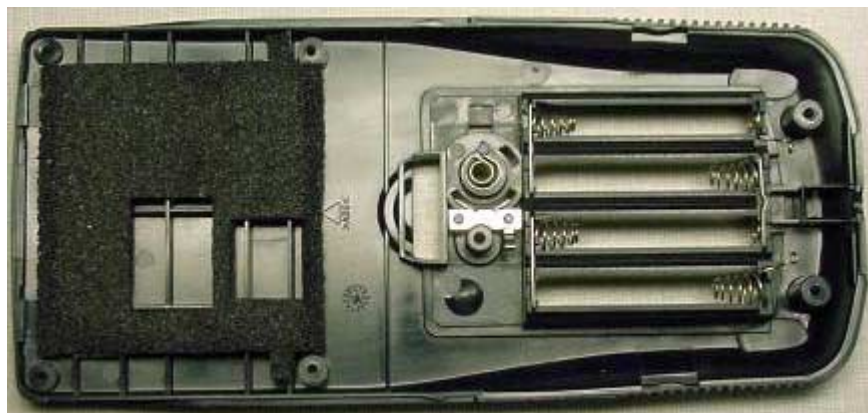
Back cover with batteries and battery covers removed



Back cover removed



Inside view of back cover



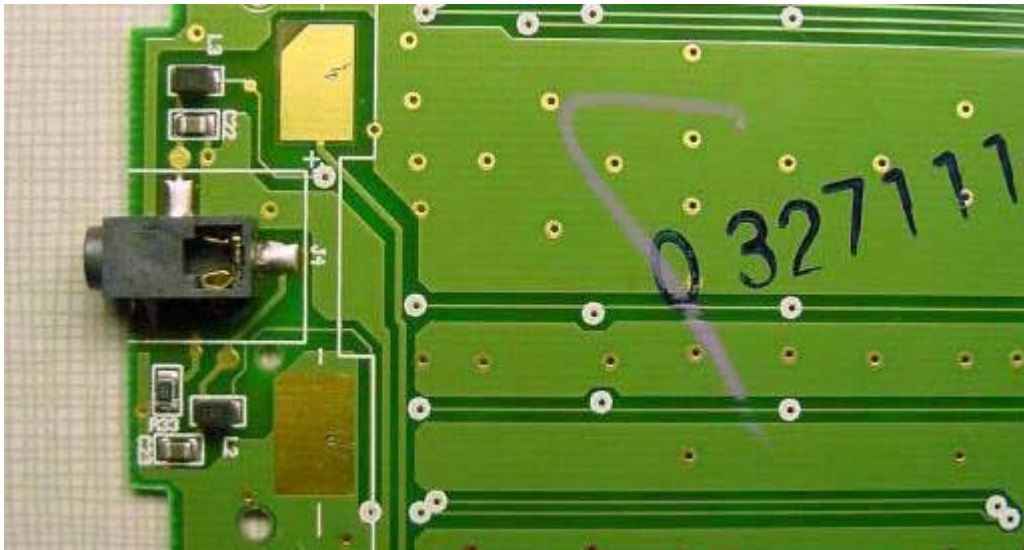
Component side of PCB with shield removed



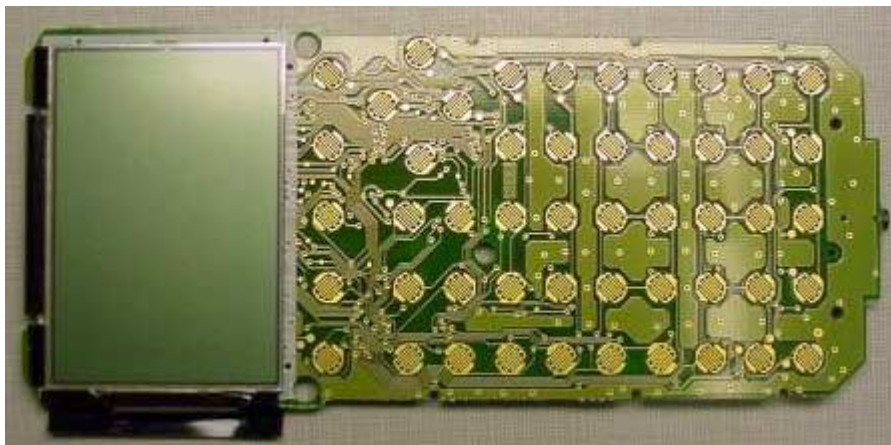
A detail view of the intergrated circuits



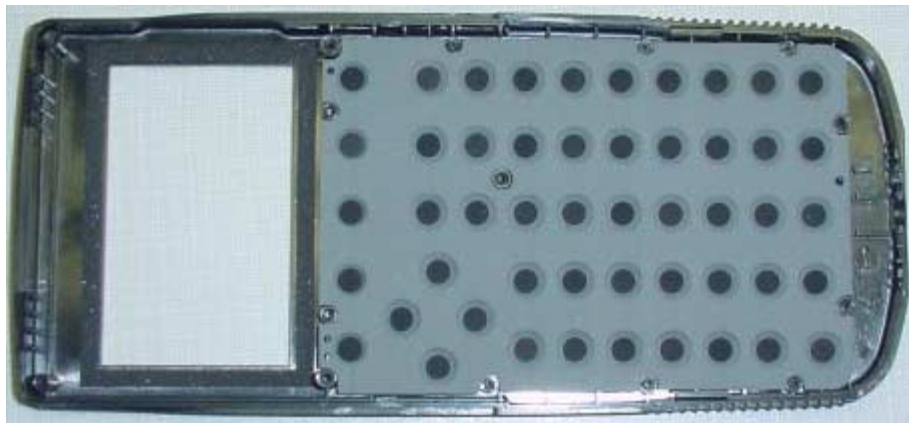
Detail view of the GraphLink I/O connector



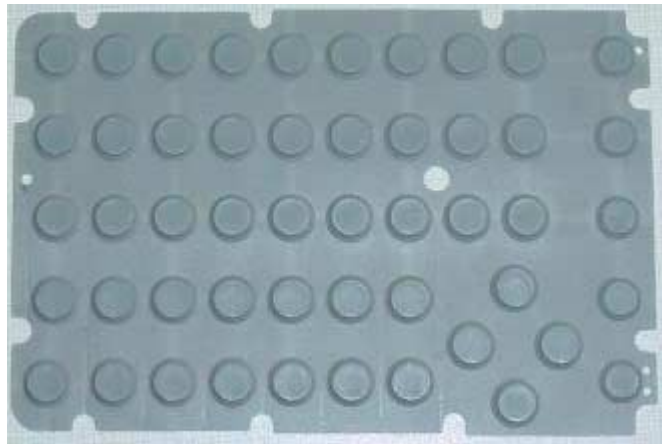
PCB, switch contact side



Case front cover with keypad rubber sheet in place



Keypad rubber sheet, key cap side



Inside front cover showing keycaps in place



Detail of a key cap

