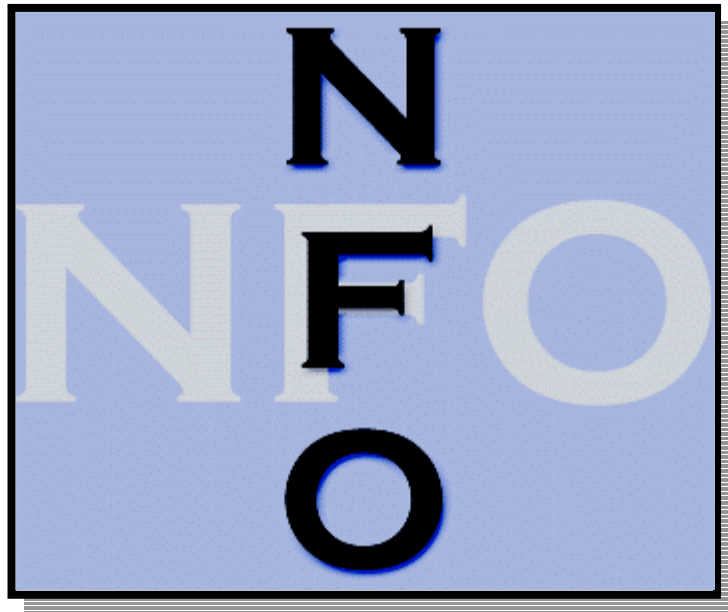


USER'S GUIDE



to the
White House 2001 Project's
NOMINATION FORMS ONLINE

release version: 2.4i
10 July 2002

Funded by ***THE PEW CHARITABLE TRUSTS***

through its presidential transition initiatives
THE TRANSITION TO GOVERNING PROJECT
&
THE PRESIDENTIAL APPOINTEE INITIATIVE

Notice

By using this program, the nominee acknowledges that this software is provided as a convenience to presidential nominees, that the nominee is responsible for carefully reading and editing answers in order to ensure delivery to the proper recipient, and that the nominee is responsible for the content of all information he or she provides. Nominee acknowledges that the authors, operators and owners of this software program expressly waive any and all responsibility or liability for claims or damage of any nature caused by any actual or alleged malfunction or failure to operate of this software program.

Notice

In order to illustrate useful functions, the *Nomination Forms Online* manual presents screen facsimiles from an *NFO* session. The individual used in this facsimile is fictitious. Any resemblance to anyone living or dead is unintended and coincidental.

Windows, Windows95, Windows98, WindowsNT, and Windows2000 are registered trademarks of Microsoft Inc.

Adobe and Acrobat are registered trademarks of Adobe Systems Inc.

Java is a registered trademark of Sun Microsystems, Inc.

QUICK GUIDE TO USEFUL INFORMATION

If I want to	I'll find it under ...	on page
Assure myself I have secure data	<i>Privacy</i>	31
Call for help with the program	1-888-388-1015	33
Call for help with the program, but I am not the nominee	<i>If You Represent the Nominee</i>	31
Change which forms I file	<i>Restructuring Your Application</i>	28
Email for help with the program	helpnfo@whitehouse2001.org	33
Email my data to the government	<i>to Make External Data Files</i>	29
Figure out if my computer has what it takes to run the software	<i>PC Requirements</i>	5
Figure out what all these buttons mean	<i>Helpful Buttons</i>	13
Get all the information together I will need to call the help desk	<i>Basic Information Form</i>	34
How to start the program	<i>Starting NFO</i>	14
Install my software from the CD	<i>Installing NFO from the CD-Rom</i>	8
Install my software from the website	<i>Installing NFO from the Web</i>	6
Interpret the error messages I get	<i>Some NFO Error Messages</i>	39
Know the people behind this program	<i>White House 2001 Project</i>	i
Print my forms	<i>Printing the Forms</i>	25
Re-use my data for a family member	<i>NFO For a Family Member</i>	29
Re-use my financial data for my annual disclosure report	<i>Financial Disclosure</i>	28
Re-use my program for others but still save my data	<i>Making a Personal NFO Database</i>	28
Send suggestions to the <i>NFO</i> staff	helpnfo@whitehouse2001.org	33
Update my <i>NFO</i> Software	<i>Updating Your NFO Program</i>	8

BACKGROUND TO *NFO*

The White House 2001 Project and the Boston Education and Software Technology programming group proudly present *Nomination Forms Online* a software package designed to aid presidential nominees navigate the difficult and time consuming (and yes, frustrating) process of filing the paperwork necessary for a presidential appointment. The Pew Charitable Trusts has funded the development of this software and a number of institutions, both public and private, have participated. You will find these institutions listed on *NFO*'s opening panel.

ABOUT THE WHITE HOUSE 2001 PROJECT AND *NFO*

<http://whitehouse2001.org>

Presidency scholars have lead a two-part project designed to ease the transition to power of the new presidential administration. The White House 2001 Project has two parts. In the first, the White House Interview Program, we have provided incoming White House staff members with information on operating key White House offices. And in the second program, the *Nomination Forms Online* Program, we ease some of the burdens for presidential nominees who need help filling out a tidal wave of forms as part of the appointments process. Funded by The Pew Charitable Trusts, a foundation known for the stature of its programs and the nonpartisan nature of its organization, the White House 2001 Project works with two broad, Pew initiatives: The Transition to Governing Project of the American Enterprise Institute and the Presidential Appointee Initiative of the Brookings Institution. The White House 2001 Project acknowledges the assistance of Dr. Norman Ornstein and Dr. John Fortier at AEI and Dr. Paul Light and Ms. Carole Plowfield at PAI. It acknowledges the assistance and guidance of Dr. Michael Delli Carpini and Ms. Elaine Casey at Pew's Policy Studies program and Mr. Donald Kimelman at Pew's Venture Fund. The board and members of the Presidency Research Group, the worldwide professional organization of scholars focused on the American presidency and a section of the American Political Science Association, played an important role in designing and developing the White House 2001 Project.

ABOUT *NFO*

In order to address the volume of information required from appointees and the problem of the plethora of forms to be filled out by nominees, the *Nomination Forms Online* program provides a software package that nominees can use to complete the myriad of forms required by the White House, the FBI, the US Office of Government Ethics, and, where appropriate, the Senate committee of jurisdiction. The software uses innovative programming techniques to distribute repetitive information across the several forms nominees must complete. The software allows the nominee to store information for future use in completing annual reports. It also makes available a portable file of data in standard formats so the nominee can share information, at his or her discretion, with the White House Office of Presidential Personnel and other agencies. *Nomination Forms Online* is freeware.

A very talented group of people have worked on *Nomination Forms Online* for the White House 2001 Project. These include a team at the University of North Carolina at Chapel Hill led by Jennifer Hora. This team includes Christine Kelleher, Daniel Kono, Andrea McAtee, Todd McNoldy, Adam Newmark, and Christopher Witko. The original programming designs resulted from work done by Professor Stephanie Haas of UNC's School of Information and Library Sciences (SILS), Terry Sullivan, the *NFO* Director, and Anna Kemp, a graduate student in SILS.

Welcome to *Nomination Forms Online*

The website delivery system for *NFO* comes from the Ibiblio.org consortium at UNC Chapel Hill, Professor Paul Jones, Director, and Kelly Jo Garner. Visit this interesting consortium.

In Washington, Dr. Martha J. Kumar, the Director of the White House 2001 Project has played an important role coordinating the support of government agencies and the administration in providing us with useful information.

A number of people, both inside and outside the current government have lent us assistance in understanding the inquiry process and how this software could play a role in making things easier. These include most of the previous Directors of Presidential Personnel — Mr. Pendleton James, Mr. Chase Untemeyer, and Mr. Robert Nash. It also includes those involved in the clearance process and the financial disclosure processes; particularly, Ms. Jan Naylor Cope, Mr. A. B. Culvahouse, Mr. Kenneth Duberstein, and Ms. Constance Horner. In the current government, Ms. Jane Ley of the US Office of Government Ethics has provided tremendous expertise.

In the George W. Bush White House, we have received assistance and encouragement from Mr. James Carroll and Ms. Laura Flippin, Clearance Counsels, and Mr. Clay Johnson, III, Director of Presidential Personnel.

Four institutions have played pivotal roles in supporting the software development of *Nomination Forms Online*: The University of North Carolina at Chapel Hill, the Presidential Appointee Initiative of the Brookings Institution, The Transition to Governing Project of the American Enterprise Institute, and the James A. Baker III Institute for Public Policy of Rice University. Without their support, the *NFO* program would have failed.

In particular, the White House 2001 Project staff wants to recognize Dr. Paul Light, Senior advisor to the Presidential Appointee Initiative, for his relentless and unswerving support of this programming effort. In addition, Dr. Norman Ornstein of AEI and Dr. Thomas Mann of the Brookings Institution, who coordinated the Transition to Governing Project at AEI, have been unswerving advocates of the software approach to helping nominees and their financial support underwrote the major staff components supporting *Nomination Forms Online*, especially its testing and technical support groups. Without their help, none of the programming efforts would have made any difference.

And, in many ways most importantly, The White House 2001 Project pays special tribute to the Infinity Software Group, USA, and its parent company Boston Education and Software Technologies, Ltd, India. Their expertise and unswerving loyalty to this project represents the foundation on which it arose. In our original goal, we planned to have the software ready for the presidential transition in 2000. Boston programmers worked twelve hour shifts and six day weeks to meet that goal. When we asked them to restructure the programming in August 2000 in order to accommodate requests from the presidential campaign/transition teams for more functionality, they simply shifted their efforts. When we asked them to restructure the forms to accommodate Senate committees in November 2000, they simply shifted their focus. When we held them off from completing the program so that the new Bush White House could restructure its Personal Data Statement, they patiently waited. When we brought them a completely new White House form, they dived into a head-to-toe restructuring without complaint and without compensation. And, then, we added more forms and functionality to make it easier for nominees! Throughout the entire effort, Boston has performed with professionalism, creativity, and a commitment to customer service and excellence with which we proudly have associated and thankfully have received.

Martha Joynt Kumar
Director, the White House 2001 Project

Terry Sullivan
Program coordinator, *Nomination Forms Online* Program &
Associate Director, the White House 2001 Project

Welcome to *Nomination Forms Online*

A WORD FROM BOSTON
EDUCATION & SOFTWARE TECHNOLOGIES LTD.

At Boston Education and Software Technologies, Limited, we are very pleased to have played a role in developing *Nomination Forms Online*. From the beginning, we saw this project as an opportunity to participate in the global community in a special way. Like technology companies everywhere, the staff at Boston is young. Everyone working on *NFO* was born after Indian independence. Though our culture has roots in unrecorded history, our political democracy is an infant by Anglo-American standards. At a very personal level, then, we at Boston saw this project as an opportunity for one of the youngest democracies to lend a hand to one of the world's oldest. As such, we understood this project as a special responsibility, felt a special bond to it, and wanted to realize it as a unique "business" opportunity.

Boston is one of the leading IT Companies in India. We specialize in training and software development with more than 200 operational centers and a state of the art software development facility in Mumbai. Boston has adopted "Total Excellence" as its principal guiding light, around which revolves its entire spectrum of activities. With this unique vision, Boston is a forerunner in the emerging Technologies market place and architect of high value end-to-end I.T. solutions, education and services to a list of global clients.

Beyond *Nomination Forms Online*, Boston has developed software for D. P. Solutions Inc. USA, the *Economic Times*, Identitech USA, Coca Cola, WebOman, to name but a few. Please visit Boston on the world wide web at one of our portals: www.testvarsity.com (our IT testing portal) or www.eduunlimited.com (our online learning portal).

Arvind Shah
Founder, BEST

J. P. Nag
Project/Program Manager, *Nomination Forms Online*

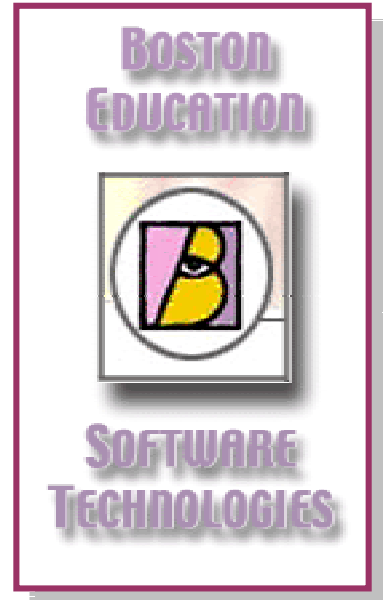


TABLE OF CONTENTS

QUICK GUIDE TO USEFUL INFORMATION.....	I
BACKGROUND TO <i>NFO</i>	I
<i>About the White House 2001 Project and NFO</i>	<i>i</i>
<i>About NFO</i>	<i>i</i>
<i>A Word from Boston Education & Software Technologies LTD.</i>	<i>iii</i>
INTRODUCTION.....	1
<i>About this Manual</i>	1
<i>Disclaimer</i>	1
WHAT <i>NFO</i> DOES.....	2
SOMETHING <i>NFO</i> DOESN'T DO	3
<i>The Range of Inquiries Over Time</i>	3
Breaking Upstream Connections	3
Editing "Downstream"	4
INSTALLING <i>NFO</i>	5
<i>PC Requirements</i>	5
<i>Installing NFO from the Web</i>	6
Figure 1. Examples of Installation Windows	7
<i>Installing NFO from the CD-Rom</i>	8
What to Do If Your CD Doesn't Install	8
<i>Updating Your NFO Program</i>	8
RUNNING <i>NFO</i>	9
<i>Basic Information</i>	9
<i>Working with the NFO Workspace</i>	10
Figure 2. The <i>NFO</i> Workspace	10
Entering Data	10
Figure 3. Editing in the Workspace	11
Moving to the Next Screen	11
If You Don't SAVE	12
Helpful Buttons and Help Buttons	13
Keeping Track of Your Work	14
Table 1. Color Codes on the Work Space To-Do List	14
Keeping Track of Required Attachments	14
<i>Starting NFO</i>	14
Figure 4. MS Windows Command Interpreter Open	15
Figure 5. <i>NFO</i> Entry (welcome) Panel	15
Figure 6. The Introduction Panel	16
Table 2. Workspace Options	17
<i>Building and Using Your Workspace</i>	17
Figure 7. Basic Biographical Information Screen	18
Figure 8. Building a To-Do List	19
<i>Entering Data in NFO</i>	19
Typical Data Entry	19
Figure 9. Data Entry in <i>NFO</i>	20
Help in Data Entry — Query	20
Table 3. How <i>NFO</i> Transfers Data	21
Entering Money Amounts	21
Transferred Data	21

Table of Contents

Pull-Down Menus	22
Pasting from the Clipboard	22
Table 4. Editing Commands in <i>NFO</i>	22
Figure 10. An Example of a Pull Down Menu	23
Figure 11. Detail of Output Generated by Pull-Down Menu, SF-278	23
<i>Saving Printing and Record Keeping</i>	24
PRINTING THE FORMS.....	25
Updating the Forms and Calculating Extension Pages	25
Figure 12. Selecting Documents to Print	25
Printing the Forms	26
RECORD KEEPING WITH SUBMIT	26
Figure 13. Logging Your Submitted Forms	27
REUSING <i>NFO</i>	28
<i>Restructuring Your Application</i>	28
<i>Filing Your Annual Financial Disclosure (SF278)</i>	28
<i>Making a Personal NFO Database</i>	28
Figure 14. <i>NFO</i> Directory from Windows Explorer	29
Making a Version of <i>NFO</i> For a Family Member	29
<i>Using NFO's Portability to Make External Data Files</i>	29
GETTING HELP WITH <i>NFO</i>	31
<i>Privacy Under NFO</i>	31
If You Represent the Nominee	31
<i>Help within the Program</i>	31
Form Help	31
General Help	32
Query Help	32
Figure 15. Illustrating the Use of Query Help	32
<i>How to Contact CallNFO</i>	33
CallNFO 1-888-388-1015	33
CallNFO Hours see whitehouse2001.org/callinfo	33
Email NFO helpnfo@whitehouse2001.org	33
Table 5. Basic Information Form For Call <i>NFO</i>	34
<i>Basic Information to Have Ready</i>	35
Nomination Forms Online Version	35
Your Computer's Operating System	35
Figure 16. Finding the System on the Start Menu — 1, 2, 3	35
Figure 17. The System Information Panel — 1, 2, 3	36
Printer Information	36
Locating Your Printer "Driver"	37
Nature of the Problem	37
Type of Appointment	37
<i>If You have Called Before?</i>	37
Figure 18. Locating Your Print Driver — 1, 2, 3	38
<i>Some NFO Error Messages</i>	39
Table 6. <i>NFO</i> Error Messages	39
GENERAL REFERENCE TEAR SHEETS.....	42
<i>Working Toolbar</i>	43
<i>Color Coding on the To-Do List</i>	44
<i>Forms included in NFO</i>	44
<i>A Copy of the Basic Information Form For CallNFO</i>	45

Table of Contents

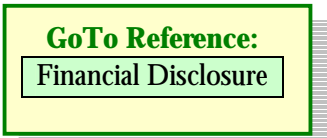
<i>Guide to “DownStream” Editing</i>	47
Table 7. Relationship between Downstream Questions	47

INTRODUCTION

ABOUT THIS MANUAL

This manual provides instructions for using *Nomination Forms Online* on Windows machines. Because screens sometime appear differently on different platforms, the screen captures in this manual may seem slightly different from those you see with your computer.

The manual covers five topics: an overview of the software, its installation, its operations, some basic reference materials, and instructions on how to use *Nomination Forms Online* for other tasks. You may jump to any of these topics by clicking on the appropriate page number in the Table of Contents or by clicking on cross-references in the text itself. For example, if you want to jump to the section on how to use *NFO* to file your annual financial disclosure reports, just click on this “bookmark:” Financial Disclosure.



In using this manual, we provide you with two important additions in the margins. The first called “*NFO Helps*” provides helpful hints on options. The second called “GoTo Reference” allows you to jump to sections in the manual that cover an additional related topic. Simply by clicking on the buttons in the GoTo Reference section, you can jump to that topic.

DISCLAIMER

Please read carefully the disclaimer below:

Notice

By using this program, the nominee acknowledges that this software is provided as a convenience to presidential nominees, that the nominee is responsible for carefully reading and editing answers in order to ensure delivery to the proper recipient, and that the nominee is responsible for the content of all information he or she provides. Nominee acknowledges that the authors, operators and owners of this software program expressly waive any and all responsibility or liability for claims or damage of any nature caused by any actual or alleged malfunction or failure to operate of this software program.

WHAT *NFO* DOES

By designing the *Nomination Forms Online* software, we have tried to make the process easier for nominees without reforming it — taking the process of inquiry as nominees find it, and simply making it easier to get through. *NFO* accomplishes that objective by taking the information provided by nominees and distributing its contents among the various forms required of them. Where possible, *NFO* customizes the information provided to answer other related questions, but as a nominee you should know that while related to each other, many questions require significantly different information. *NFO* cannot always make the complete transfer of required information and because of that fact, the nominee must pay special attention to all questions and whether the supplied answers best comply with the question. *You may have to supplement the information transferred by the software and you may have to edit it to reduce the information provided.*

GoTo Reference:

Installing *NFO*

Running *NFO*

Please read carefully these instructions on how to use the *NFO* software, including how to install the software and how to run it.

The *Nomination Forms Online* software helps the nominee file the blizzard of forms required by the national government. It does so by identifying the linkages between questions asked by the different institutions and then transferring information across the ether between questions.

In addition to accomplishing this primary task, *NFO* provides a number of useful features. These include:

- **Thoroughness.** The *Nomination Forms Online* software has developed over the past three years working closely with all of the committees of jurisdiction in the US Senate, the White House, and a number of Executive agencies in order to make sure that the software gets it right. The forms you work with in *NFO* represent electronic versions of (identical in every way to) the forms you have received as a nominee in hard copy form.
- **Intelligence.** In most cases, *NFO* transfers just the right amount of information from one question to another. Where questions on one form asks for similar though *not identical* information found elsewhere, the software identifies what information it can transfer and then transfers only the information needed. It also keeps track of your work so that you can stop and resume your work schedule later. It keeps track of those questions you have not completed. It reminds you of attachments (other documents, resumes, income taxes, *etc.*) you are required to provide.
- **Flexibility.** Because it can remember your work and save it independently in special files, the *NFO* software allows you a number of work options. For example, you can define a set of forms for one job then change your mind and redefine the number and identity of the forms required for a different job. If you got bad advice about what forms you need to file, with one click you can correct the workspace (see the section on Restructuring Your Application). Using this facility, you can file forms for additional appointments, allow others (spouses for example) to share the software, and reuse the software to provide annual updates of financial disclosure statements or update national security information (again, see the section on Financial Disclosure).
- **Self-contained.** *Nomination Forms Online* comes with all of the necessary elements you need to make it work. If you don't have these facilities on your machine, it provides them. For example, *NFO* requires a particular computer program, "Java™ runtime environment," so if you don't have it on your machine, the software automatically provides it for your use, free.

GoTo Reference:

Restructuring Your Application

Financial Disclosure

See the setup information for a complete list of what you need: see the section on PC Requirements.

- *Security.* The programming team has made every effort to preserve the privacy of your responses. In particular, we decided to avoid the use of the Internet in completing or filing your forms. The software works entirely on your own machine.¹
- *Portability.* Because *NFO* saves your information separately from the output onto the forms, you may choose to forward your files to others via email or a disk. In either case, the software provides a handy means for translating your data into other programs. See the section on Portability.

GoTo Reference:

PC Requirements

Portability

SOMETHING *NFO* DOESN'T DO

While we have used some of the most sophisticated programming available for *NFO*, it simply cannot overcome some elements of the process we designed it to ameliorate. This section helps you understand how the program deals with these challenges.

THE RANGE OF INQUIRIES OVER TIME

Nominees must answer around 300 points of inquiry. Of those separate inquiries, only 19 require identical information across the forms nominees must file. Many of the remaining scores of inquiries require the nominee to repeat information but in altered formats, with more or less information, and with more or less detail. As a consequence of this variation, the internal structure of *NFO* — the theory behind its programming — cannot do one important thing.

Breaking Upstream Connections

Because nominees must file some forms before others, *NFO* connects the answers to questions in a hierarchal way, transferring information “downstream” to the later forms. You can see a picture of this relationship in Table 3 on page 21. While the program runs, answers and changes to those answers in the upstream questions trickle down to the other questions. At some point, though, the nominee must edit the downstream answers to make them conform to the particular oddities of downstream questions. At that point, *NFO* will not update information from the upstream form in order to protect the downstream editing. It “severs” the connections between those questions. You accomplish this severing function when you “save” your answers as you move from screen to screen.

GoTo Reference:

How *NFO* Transfers

“DownStream”
Editing

When it severs the upstream connections, *NFO* begins updating answers on the form's printer copy, preparing to print that form when the nominee has completed it. In some circumstances, then, you can update an answer on the form in the *NFO* program window but not have the information transferred as yet

¹ As yet, no federal agency can receive form submissions electronically.

If you regularly maintain a connection to the internet, through a cable modem or an ISDN or DSL connection, you might consider getting a “firewall program” that prevents unwanted hacker intrusions before you use *NFO*. Even though you may not observe these intrusions, the average internet-connected machine receives a very large number of unwanted “probes” by hacker software *each day*.

to the printer copy. *NFO* as preserved the information you have provided. It simply has not transferred it to the printer copy as yet.

This minor inconvenience results simply from the fact that the government has never rationalized the process of nominee inquiry so that nominees report exactly the same information on all forms.

Editing "Downstream"

Once *NFO* begins to update the answers on the printer copies, editing answers becomes more difficult. To assist in editing upstream answers so that new information gets added to downstream answers we have tracked all questions and their downstream relationships. You can find these relationships in Table 7 on page 47. Note, that some changes in you make in upstream forms and questions need not affect downstream answers given the variation of information required on the same subject by different forms.

Nomination Forms Online cannot reduce the effects of this problem further as it results from decisions by the originating agencies.

INSTALLING NFO FROM THE WEB

These instructions cover installation of the *NFO* software from the White House 2001 Project website, whitehouse2001.org. See Figure 1 for a display of the most important installation screens so that you can follow along in the instructions. These instructions walk you through the process: unpacking the *NFO* installer from its case used for transport through the internet and installing the software using the SETUP.exe program.

1. Direct your web browser to whitehouse2001.org. Click on the *NFO* Installation web page.
2. Check the “*NFO* Updater” section (top of the left column) for late-breaking news on the software.
3. Scroll down to the “Download Center.” Fill in the registration information, please.⁵
4. Click on the SUBMIT button
5. Determine if you need Adobe® Acrobat® Reader (see the instructions on the site). If you do, then click on that download selection first and install the Reader. When finished return to the Download Center.
6. Select the package you want to download. We recommend the full download, (InstallNFO2-4imax.exe) unless you have a slow modem and then you might prefer to download parts instead.
7. Click on the package you wish to download. When asked where you wish to save the file, respond by creating a new directory called “DownloadNFO” and save the installer in that directory. Your browser may try to launch the Installer when it finishes. If it does try, then let it.
8. When the download finishes, locate the installer file (e.g., “InstallNFO2-4imax.exe”) on your hard drive in the “DownloadNFO” directory. Double click on it to unpack the program. It will ask you to install the software into a directory it will create. The installer will default to the c:\nfo directory. Clicking the “UnZip” button begins the process.
9. Open the c:\nfo directory. Read any “Read This, Please.pdf” file in order to get up to date information on *NFO*.

You have finished the installation process. You are ready to run. As an additional check, see if your desktop has an icon on it for *NFO*. If it has, then you are finished. You run the program from this icon on your desktop.

If it has not installed a desktop icon, then double click on the CreateShortcut.exe file and it will make one for you.

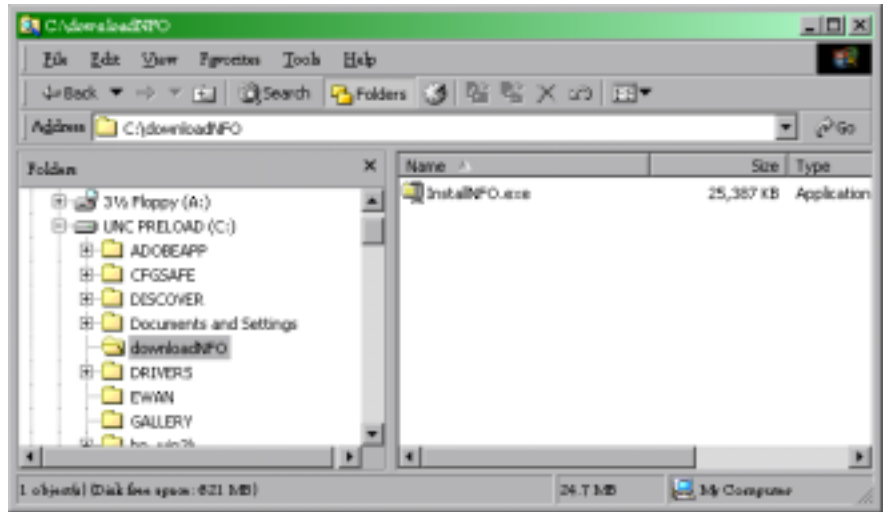
⁵ As indicated on our website, the White House 2001 Project will not under any circumstances (short of a subpoena) reveal information about its users to anyone outside of the Project working group. We do not intend to use the information to contact you except if an update on your version is required or if we respond to a request for assistance from you.
You may choose to ignore the request and you will still have full access to the software.

Figure 1. Examples of Installation Windows

UNPACKING NOMINATION FORMS ONLINE

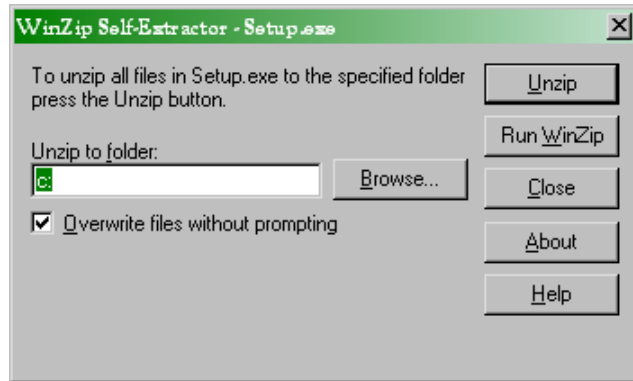
The downloaded installer.

Double click on InstallNFO.exe and it will begin to unpack the program and its support documentation.

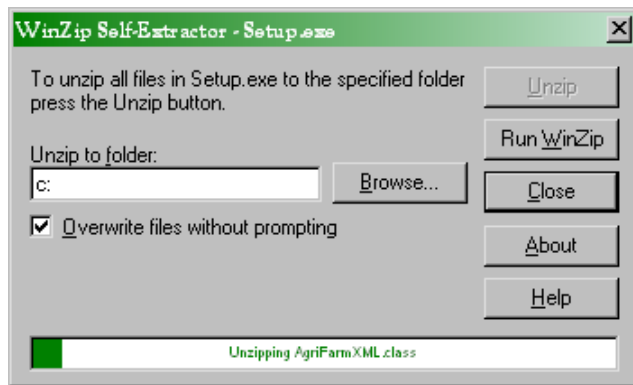


The SETUP program starts up to unpack *NFO* components and the user information directories. Click on Unzip to begin the setup.

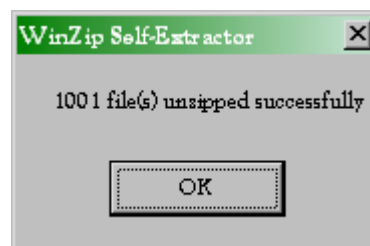
If you want to locate your program on another drive, you can change the location by hitting the BROWSE button or if you want, typing in another hard drive name (e.g., E:\) and then click on Unzip.



The unpacking begins on C:\.



The installer has finished. Click OK to close the screen.



INSTALLING NFO FROM THE CD-ROM

1. Open your CD drive and insert the *NFO* CD. Please insert the CD with its label up. Close the drive and the CD will automatically spin up and begin to install the necessary program elements onto your computer's hard drive. If your CD doesn't immediately spring into action, see the section on *What to do If Your CD Doesn't Install*.
2. The installer begins to copy all of the program elements into the C: drive *NFO* folder.
3. When the program has finished installing the *NFO* software in its folder, look on your desktop for an *NFO* logo. If you have one, go onto the next step. If you do not have one, then use your Windows Explorer program to open the c:\nfo directory. There you will find a program called CreateShortcut.exe. Double click on that file to create a custom icon on your desktop. That allows you to launch the program.
4. Use your Windows Explorer program to open the directory on the CD.
5. Click on the "Read This, Please.pdf" file for late breaking news.

Go To Reference:
If Your CD Doesn't

You have finished the installation process. You are ready to run. You can launch the program by double clicking on the icon on your desktop.

What to Do If Your CD Doesn't Install

We have included these instructions just in case your CD does not perform as expected. If the CD does not immediately launch the *NFO* install module, you can still install *NFO* from your CD manually. With Windows Explorer open your CD drive and double click on Setup.exe. Then return to the instructions above and continue at step 2.

UPDATING YOUR NFO PROGRAM

Just so you have the most up-to-date version, please check our website at whitehouse2001.org/nfo. The *NFO* Download Center will provide the best instructions for how to finish an update. In general, the process involves first obtaining the software, then securing your current data, and then updating the program. Securing your data makes sure that you have kept any information that you might have already entered or any versions of data (say for a family member) that you have stored in a separate folder.

RUNNING NFO

This section takes you through using the basic features of the *Nomination Forms Online* software. These instructions start after you have launched the program by double clicking on its *NFO* Icon on the desktop or run it from the Windows START/Programs menu. To follow *NFO* through its entire working process see the more detailed instructions starting on page 14.

BASIC INFORMATION

Nomination Forms Online involves four processes:

1. *Starting* — The nominee initiates *NFO* by choosing from among four options: 1) to fill out a set of *new forms* or 2) to continue with a set of *previous forms* only partially filled in or 3) *restructure* the set of forms to be filed or 4) write out the information already filled in onto a *portable file* suitable for emailing to others. The program then requests some basic information (including name, social security number, birth date, and position) and whether or not the position you apply for requires Senate approval.
2. *Building the NFO Workspace* — The program then builds a special record (called a “workspace”) of the jobs it must do. This facility allows the nominee to keep track of progress through the program. For more information, you can read the section on Keeping Track and on Record Keeping.
3. *Entering Data* — *NFO* then takes data from the keyboard or from the clipboard to fill in the various forms you must file. You can enter data directly into the program by typing it in or you can use your word processor to produce an answer, highlight, copy and paste it into the answer window in *NFO*.
4. *Saving Printing and Record Keeping* — The software creates output files in the “portable data format” (PDF) so it can print them on your local printer. The printing relies on Adobe’s Acrobat Reader to instruct the printer on how to form the pages. Using PDF files allows *NFO* to reproduce exactly the hardcopy forms you have received and will submit. For more information, you can read the sections on Printing the Forms and on Record Keeping.

GoTo Reference:

Keeping Track

Record Keeping

Printing the Forms

NFO Helps — Data Entry

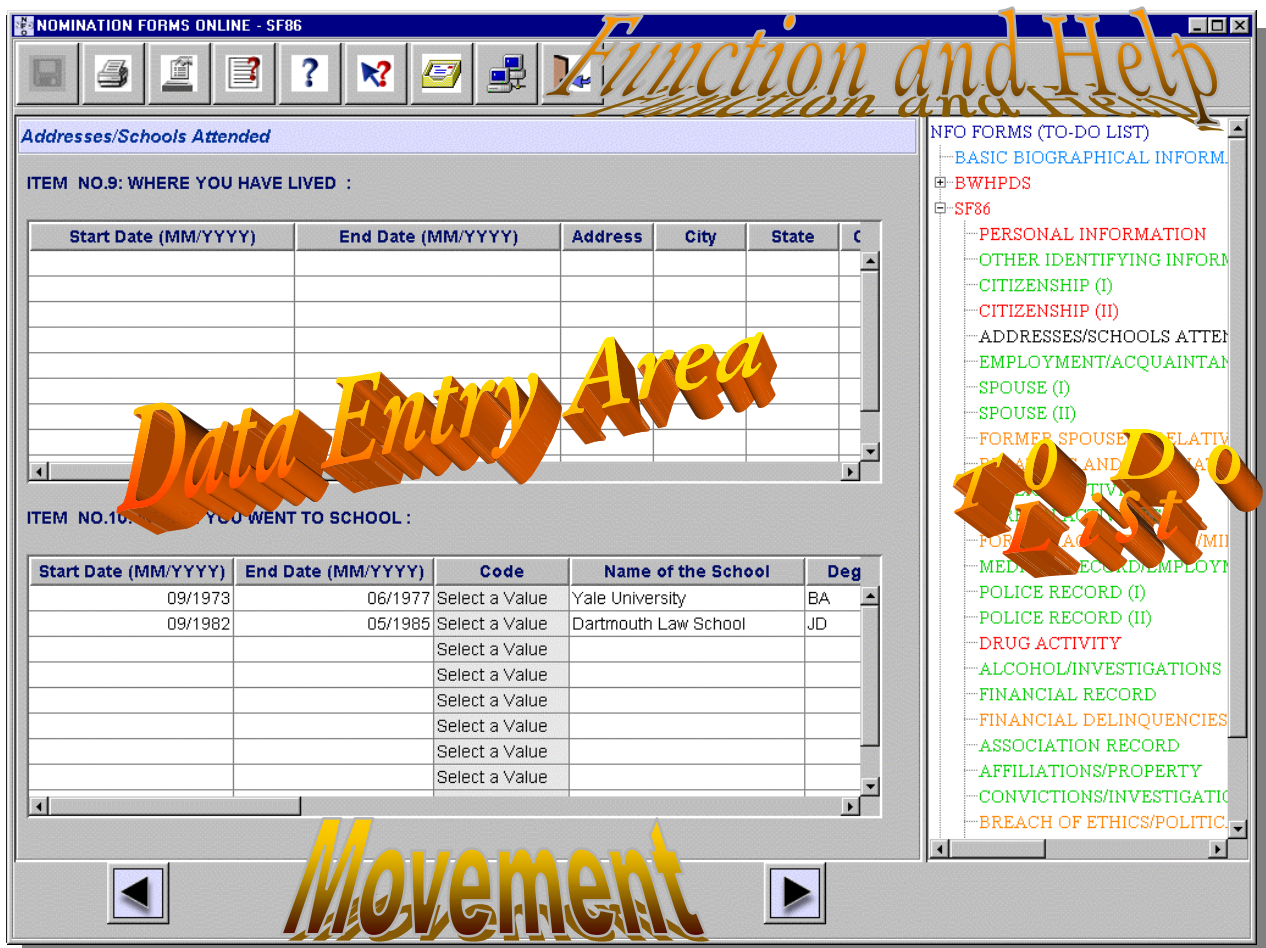
NFO transfers information from one questionnaire to another in an hierarchy beginning with the White House Personal Data Statement and passing information “downstream” to US Senate Committee forms. Therefore, you begin filling in the forms at the beginning.

Learn more about entering data and how *NFO* transfers data by reading the section on Entering Data.

WORKING WITH THE NFO WORKSPACE

You will divide your work between four elements of *NFO*. Figure 2 illustrates these elements. It shows a typical screen from the software at work. In this screen, our test subject nominee has begun to fill in the national security profile document (the SF-86) with information about previous education using the “Data Entry Area.” Our test nominee could track his process by locating his current task in the “To Do” List and noting its color. If the nominee needs help with the question or wants to save the current information, he would use the buttons along the top of the screen in the “Function and Help” area. These buttons represent the full functionality of *Nomination Forms Online* as well as provide the three kinds of assistance available from within the program. Once the nominee enters data, he can move on to the next screen in the To Do list by either clicking on the next screen in the list or by clicking on the movement buttons at the bottom of the screen.

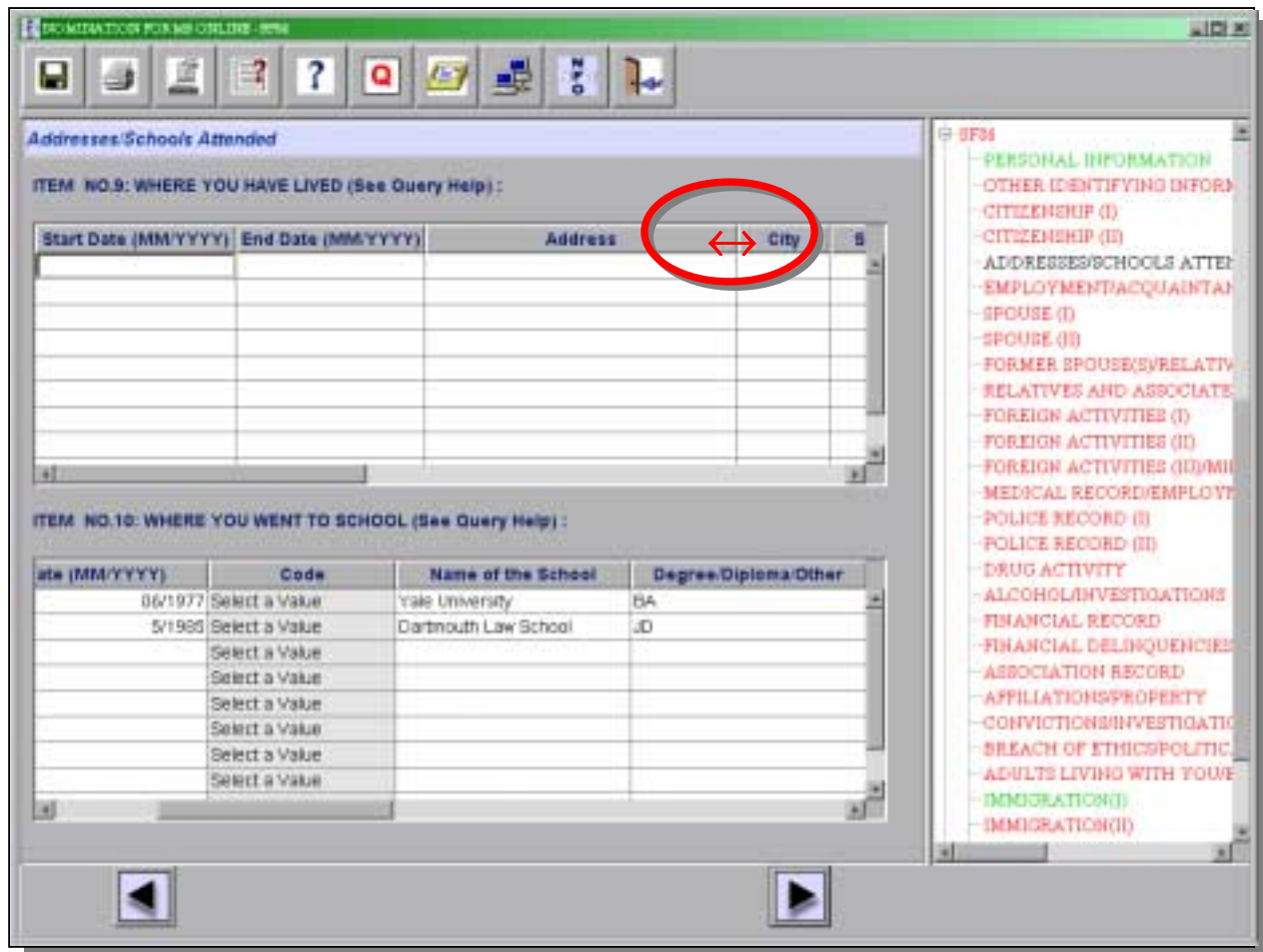
Figure 2. The *NFO* Workspace



Entering Data

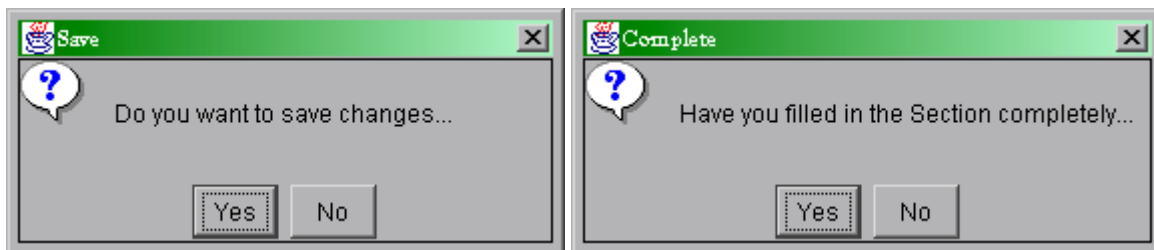
NFO works like most programs when it comes to entering data. Figure 3 illustrates one of the functions. Placing the cursor over any of the entry table panels allows the nominee to adjust the entry space. Where the nominee does not want to adjust the entry space, *NFO* will still take the required data. For more detailed descriptions of entering data, see the section on “Entering Data” found on page 19.

Figure 3. Editing in the Workspace



Moving to the Next Screen

When the nominee has completed the data entry on this screen, he will push one of two buttons in the “Movement area” to jump forward or backward one screen. The To-Do List will then adjust colors according to these movements, keeping track of his work. As the program begins to move to the next screen, it checks to see if the nominee has changed any answer. If he has not, then the program moves on to the next screen without adjusting the To Do list. If he has, then the program asks two questions: “Do you want to save changes...” and “Have you filled in the Section completely...”. Answering “Yes” to the “save” question tells the program to save into its internal database the information entered in the screen. If the nominee says “No,” then the program does not save the data in its database and moves onto the next screen.



When *NFO* loads the next screen, it searches its database to find information that it could transfer to the questions in that screen. If it finds any useful information, it updates the entry windows and activates the save function in preparation for the nominee's next movement. We cover this process in such detail at this point so that you can understand the reason for asking you about the status of the information in each screen at the end of each screen.

If You Don't SAVE

One advantage of not saving data: *NFO* will continue to query its database each time you come to that screen. In doing so, the program allows you to continue to edit upstream answers in order to refine them, before their contents get transferred permanently to any downstream variant of the question appearing on another form somewhere.

Helpful Buttons and Help Buttons

Most of *NFO* involves entering data and distributing that answer automatically to other forms. But, the program does allow for some other functions. In particular it assists you in understanding the questions asked through a series of help buttons. A row of buttons in the upper left corner of the screen maintains these functions for you:

Functional Buttons



Save — Clicking on it will allow you to save the forms and work you have already completed.



Print — Clicking on it allows you to print any forms at any time.



Submit — Clicking on this button allows for a record keeping function of the program printouts. This function is allowed only when you are completely finished with the forms. This function insures that should any problem occur with delivery or receipt of the materials you will have a complete record of all the completed forms.



Email — Clicking this button allows you to e-mail the Help Desk at *NFO* if you have MS Outlook Express. To email the Help Desk with other programs, you must return to the opening screen of *NFO*.



Port Data — Clicking on this button allows you to save your database of responses on each form in an easy to separate electronic document. This document or portable file allows you to send your data electronically, through email or on a disk, to others, as you like.



Exit — When you click on this icon the *NFO* program will shut down. It will ask you first if you want to save any changes that you have made. After your response, *NFO* will proceed to record the status of the program, your place in the Workspace To-Do list, and then it will close up

Help Buttons



Form Help — This help function presents the nominee with instructions taken from the relevant government form. The instructions exactly match those the nominee has in hardcopy provided by the White House or the Agency or the Senate. See further description at Form Help on page 31.



NFO version — Clicking on this icon will give you the current version of the software. You will need to give this information to the Call*NFO* help desk.



General Help — This help function resembles Windows help. It has a *Table of Contents* that allows you to click on a topic. The *Index* and *Find* functions allow you to search for specific words or phrases. See further description at General Help on page 32.



Query — If you are unsure about how to answer a particular question, click on this icon (after clicking on the answer space for that question) and it will give you any other, more detail information we have about the question and what it requires. As always, though, *Query* relies on the government forms for this further information. See further description at Query Help on page 32.

Keeping Track of Your Work

Nomination Forms Online keeps detailed records of what work you have completed and what you have left to do. This record keeping makes up part of its “workspace” function. You define the workspace when you start the program. The workspace in turn outlines a “To Do” list for you and shows that list down the right hand side of the program. The To-Do list illustrates your work progress by changing the colors of the text. *NFO* always highlights the active screen in black text. Different colors of text indicate the differences in completion status for the area. Table 1 decodes the colors. In this example, then, the nominee has worked on the Basic Biographical Information form (and completed it), he has not completed the White House Personal Data Statement. And in the current FBI document, he has completed the first two screens including his citizenship, but he has not finished several screens and has not begun the basic screen on “Personal Information.”

Table 1. Color Codes on the Work Space To-Do List	
Black text	The current working screen, where the nominee inserts data.
Red text	Screens yet to begin work on.
Orange text	A screen partially completed but not ready for submission.
Green text	The nominee has finished the screen and ready to file it.

Keeping Track of Required Attachments

Many Senate committees of jurisdiction and other agencies require the nominee to file copies of documents, previous year's income taxes returns, State income tax returns, *etc*. The *NFO* To-Do List keeps track of these requirements for you. It also requires you to acknowledge when you have gotten those attachments together.

You acknowledge these attachments in the To-Do List by double clicking on the item. Doing that will change the color of the item from Red to Green indicating to the program that you have completed this element.

***NFO* Helps — Check your Attachments**

NFO does not allow you to submit a form to the government if you have not completed that form. It keeps track of that work on the To-Do List. If you have trouble submitting a form that you think you have completed, then check the To-Do List for that form to assure yourself that “all is Green.” Be sure that you have double clicked any attachments when you have gotten the requested additional materials together, so that the program knows you have completed that element.

STARTING *NFO*



Find the *NFO* logo on your desktop. Double click on it to launch the program.⁶ It may take a minute. While it launches, Windows shows a command interpreter window similar to that illustrated in Figure 4. Ignore this window. Do not close it while you wait. It runs the software and will disappear when you exit the *NFO* program.

⁶ Or click on the START Menu, select Programs, *Nomination Forms Online*, and then end and release on RUNnfo.exe.

Figure 4. MS Windows Command Interpreter Open

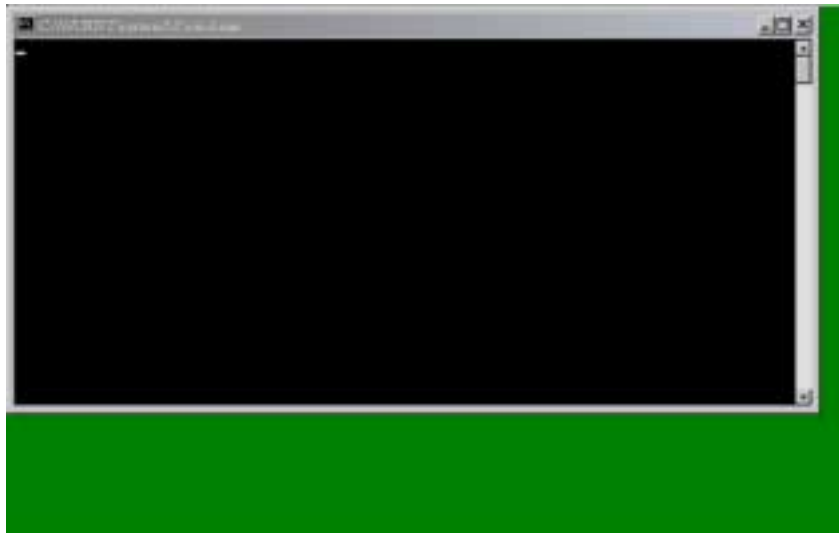


Figure 5 illustrates the initial *NFO* panel. This panel has a large *NFO* icon and several links to websites containing information about the program and its sponsors. Select any of the websites listed to get further information about these particular programs. In addition, the entry panel notes the Call*NFO* help desk contact methods.

The screen further notes that the American Enterprise Institute owns the copyright on *Nomination Forms Online* which it makes freely available under this project. It also notes that the Pew Charitable Trusts represents the central funding agency for this program and the entire White House 2001 Project.

As suggested by the flashing notation, click anywhere on the large icon to start the program.

Figure 5. *NFO* Entry (welcome) Panel



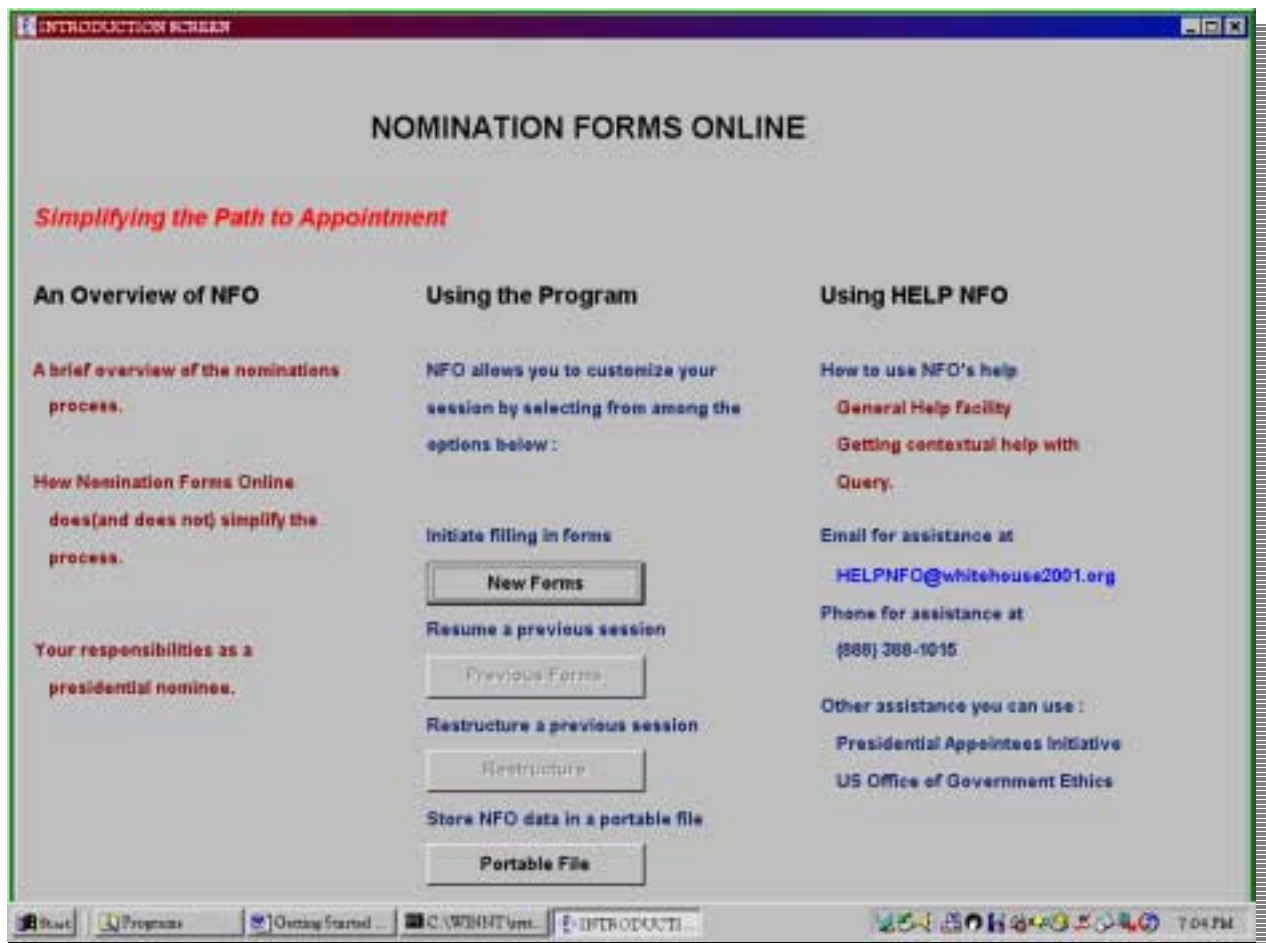
Figure 6. The Introduction Panel

Figure 6 illustrates the startup of the *NFO* program.

Through this screen, you define what kind of work you need to do with *NFO*. The screen divides information in three sections: *An Overview of NFO*, *Using the Program*, and *Using Help NFO*. Clicking on the links below *An Overview of NFO* (on left side of screen) will provide an overview of the nomination process, how *NFO* simplifies the process, and, particularly important, a description of the nominee's responsibilities in the appointments process.

Beneath the *Using Help NFO* heading (on the right) are ways to obtain help from the program or from the White House 2001 Project. Included is information on troubleshooting and contact information through *CallNFO*. In addition, the screen identifies links to two important supporters of the White House 2001 Project and its *Nomination Forms Online* program. The Presidential Appointee Initiative at the Brookings Institution provides useful information for nominees and a very useful "Survivor's Guide." We have reprinted their guide on our CD-Rom. The US Office of Government Ethics provides support of financial disclosure and conflicts of interests.

The middle section contains buttons for accessing the program's workspace. This middle section has four buttons: *initiate filing forms*, *resume a previous session*, *restructure a previous session*, and *store NFO data in a portable file*. Table 2 summarizes the actions associated with each button. Most of the work you will do will involve either the *New Forms* or the *Previous Forms* buttons.

Table 2. Workspace Options		
Heading	Button	Description
<i>Initiate filing forms</i>	New Forms	To begin <i>NFO</i> for the first time, click this button. This action will initiate the information gathering process leading to defining a workspace and a To-Do List.
<i>Resume a previous session</i>	Previous Forms	To resume a saved session, click this button. <i>NFO</i> will then assess the status of your current workspace. It also will assess where you left off on the To-Do list and place you back into the last entry panel you worked on.
<i>Restructure a previous session</i>	Restructure	If you need to change the workspace, say by adding a new Senate committee of jurisdiction or changing your financial disclosure form, click on the <i>Restructure</i> button.
<i>Store <i>NFO</i> data in a portable file</i>	Portable File	To write a separate file from your data in a format that you could email, click on <i>store <i>NFO</i> data in a portable file</i> if you plan on using data from one computer on another computer with <i>NFO</i> installed.

Click on one of these four buttons and *NFO* will begin to access your workspace, either by defining it for the first time (New Forms) or by pulling up its previous records (the other three buttons).

BUILDING AND USING YOUR WORKSPACE

NFO defines a series of records for you to complete and it keeps track of how far you have gotten in this “workspace.” It saves that information in four data files, three of which keep records on different aspects of the program’s work and a fourth acts as a backup file.

In the first step to defining a workspace, *NFO* gathers some basic identifying information on a screen entitled, “Basic Biographical Information and Position.” (See Figure 7.) In this screen, you fill in information about yourself and the position. Remember that if you don’t know what information a question seeks, click on the *Query* icon (the blue question mark with red arrow) on the top of the screen – it will give you additional information about what the question requires you to answer. In this particular example, the nominee has entered a birth date using the wrong format. He will get an “Invalid Date Format” error message from *NFO* (see Table 6 on page 14 for additional information on error messages).

***NFO* Helps — Cueing**

NFO tries to let you know what kind of information it requires. In the screen illustrated in Figure 7, the nominee needs to fill in his birth date. *NFO* indicates that the nominee must use the format mm/dd/yyyy, meaning that the nominee must indicate the entire four-digit year (e.g., “1955”).

Figure 7. Basic Biographical Information Screen

NOMINATION FORMS ONLINE

Basic Biographical Information and Position

NFO needs some basic information about you and the position for which you have been nominated or appointed.

First Name: Middle Name: Last Name:

Social Security number:

Date of Birth (MM/DD/YYYY):

Place of Birth :

City: State (Abbr.): Country:

Position :

Department or Agency:

Position Title:

Does this position require Senate confirmation? Yes No

◀ ▶

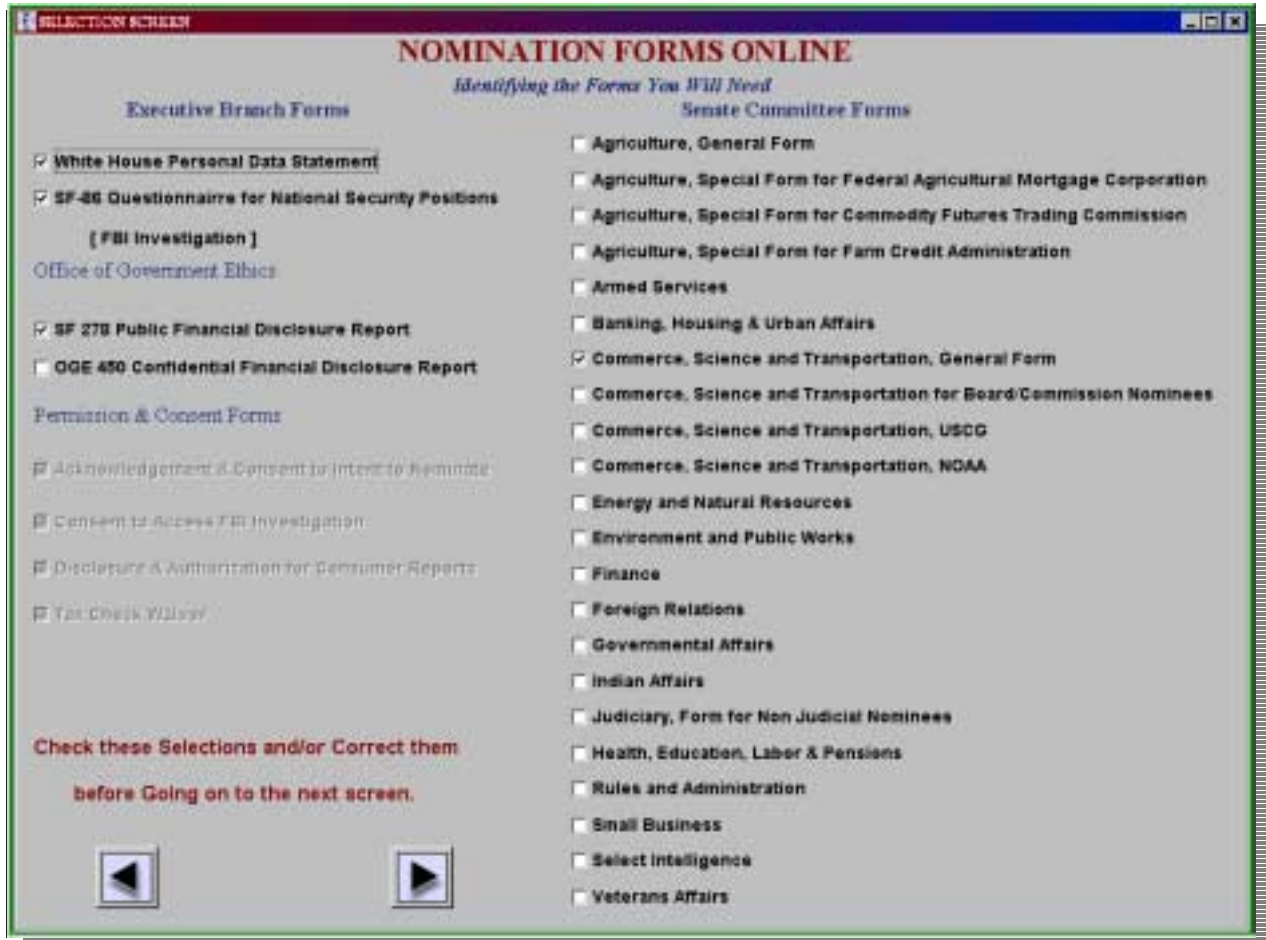
This window ends by asking whether this position requires the Advice and Consent of the U. S. Senate. You should know the answer to this question and should answer accordingly. In the case of the example we are using, our test nominee answers “Yes” since the position of Assistant Secretary requires Senate confirmation.

Click on the arrow on the bottom right of the screen to advance to the next screen where you will build your To-Do List.

The next screen (illustrated in Figure 8, below) lists all of the forms stored on the *NFO* program. Click on each form that you have received instructions to complete for your nomination. In this case, our Mr. Hayden has selected the Executive forms from the White House, the FBI, and the Financial Disclosure statement from the OGE (the SF278) and the Senate Commerce Committee form. When you have selected all of the forms you need, click on the arrow on the bottom right of the screen. It will advance you to the first form that you need to complete.

Be sure to complete the forms in order as the program forwards information from earlier forms (“upstream”) to later forms (“downstream”).

Figure 8. Building a To-Do List



ENTERING DATA IN NFO

NFO takes data in one of four ways: as text from keyboard, transferred data from previous questions, as data from pull-down menus, and as data from the clipboard.

Typical Data Entry

Figure 9 illustrates the typical panel for entering data. From looking at the To-Do List, we can tell this panel of questions comes from the SF-278, Financial Disclosure Form. In this kind of panel, the nominee must enter raw data in a number of blocks. *NFO* has already transferred some information from previous panels (blocked in gray). The nominee cannot enter data in these blocks. Other blocks in white require the nominee to add information. Enter the data as you would on any other form.

Figure 9. Data Entry in *NFO*

In some situations, *NFO* prompts you as to what kind of information you should enter. This kind of cueing happens mostly when entering dates or numbers that might require special formats. When *NFO* prompts you in this manner, you must enter the data in the format as instructed.

Help in Data Entry – Query

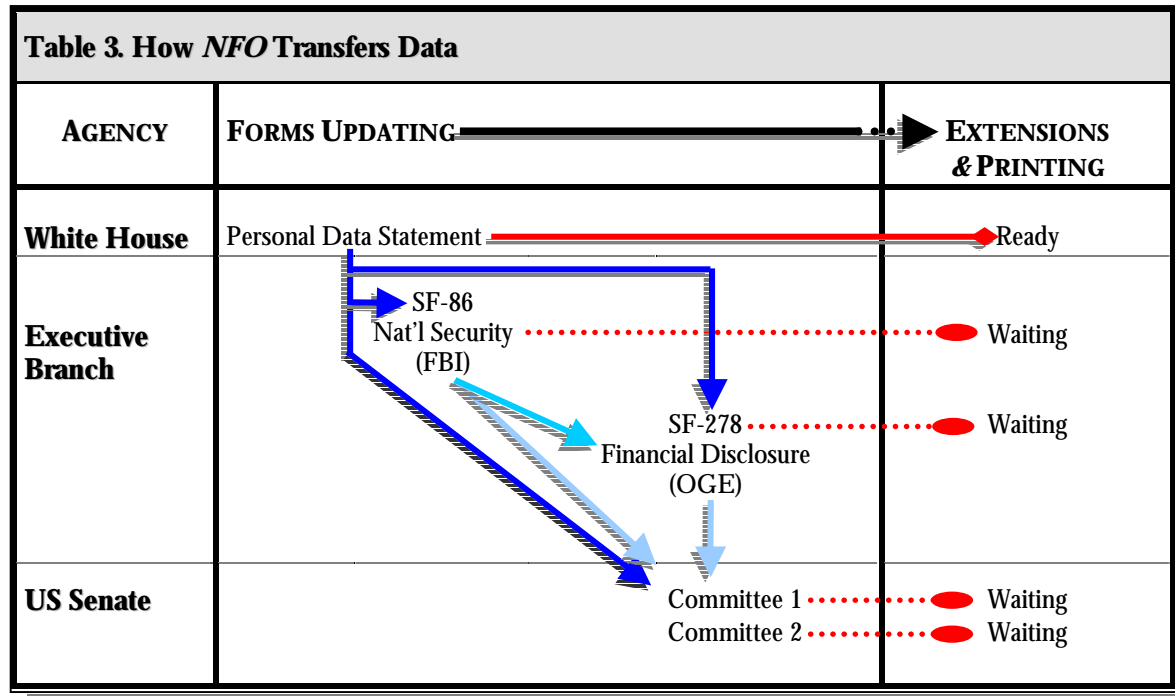
In some situations, especially on open-ended, substantive questions which might take up considerable space, *NFO* presents you with only those portions of the question that require answers. If the question seems confusing to you, you can click on the open entry box and then click on the “Query” button to see if the confusion results from some poor editing on our part. If so, the Query help function will show you the entire question asked on the form rather than its abbreviated version presented in the screen. Clicking on Query Help button again will retract the longer version of the question and leave you room to answer the question. See the earlier section on the *Query* button and the later section on Query Help. For an illustration of Query Help at work, see Figure 15 on page 32.

GoTo Reference:

Query

Query Help

Figure 15



Entering Money Amounts

The software treats money amounts just as does the typical spreadsheet program. You merely enter the amount without commas or money signs. So, you should enter the amount \$200,800.00 as “200800,” without the comma and without the \$-sign. If you do use these additional characters you will get an “Invalid Format” error. Note the text on this message on page 39.

Transferred Data

Most of what *NFO* does involves transferring data from one entry to related entries throughout the workspace. As suggested in the disclaimer and reported on in several publications by the White House 2001 Project staff⁷, many of the questions that receive transferred data ask questions that differ slightly from the original question you answered. On your real estate holdings, for example, the FBI wants to know only what you own but most Senate Committees of jurisdiction want more information

***NFO* Helps — How It Transfers Data**

Table 3 illustrates the general relationships between information recorded in one form and how *NFO* transfers that information downstream to the other forms. As a consequence, you can edit downstream information, to make it more detailed or less detailed than earlier information, and that information is passed on to later forms but not earlier ones.

⁷ For example, see this selected bibliography:
 Terry Sullivan, “Repetitiveness, Redundancy, and Reform – Rationalizing the Inquiry of Presidential Nominees,” in Paul Light and G. Calvin MacKenzie, editors, *The Presidential Appointments Process* Washington: The Brookings Institution, forthcoming Summer 2001:196-230.
 Terry Sullivan, In Full View – The Inquiry of Presidential Nominees. *Reports from the White House 2001 Project, Nomination Forms Online* Program, Study number 15(April 2001)43 pages. Also, testimony before the U. S. Senate Committee on Governmental Affairs, April 5, 2001. Also available at <http://whitehouse2001.org>.
 Terry Sullivan, “Fabulous Formless Darkness – Presidential Nominees and the Morass of Inquiry,” *The Brookings Review*, 12,2(Spring 2001):22-27.
 Terry Sullivan, Analyzing Questionnaires for Nominees. *Reports from the White House 2001 Project, Nomination Forms Online* Program, Study number 8(December 2000)14 pages. Also available at <http://whitehouse2001.org>.

about your spouse or children and their holdings, as well. So, the data that *NFO* transfers only partially answers the current question. You will need to edit that answer.

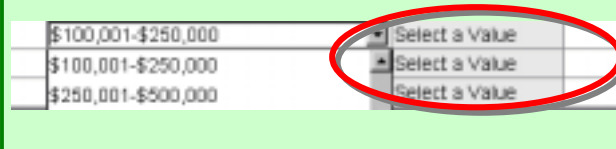
NFO allows you to edit any data that it has transferred so that you can make the current answer more compatible with the question asked on the current form. Because of the way that *NFO* transfers data, any editing you do only affects the current question and any questions “downstream” from the one you have just edited. The changes will not drift upwards to affect previous answers, so that they remain in the same state you last visited them. In addition, once you have saved any changes to your editing, *NFO* cuts the updating connection between the upstream answer and the current answer so that changes made upstream will not overwrite editing downstream. The programming requirement results from the fact that related questions on different forms do not require the same information and *NFO cannot fix that problem with the process.*

Pull-Down Menus

Some questions, particularly those having to do with financial disclosure, require specific answers. For these questions, *NFO* provides easy to use pull-down menus. On the following page, Figure 10 illustrates the use of a pull down menu. Reading from the To-Do List, this screen comes from the SF-278 form, Schedule A, listing assets. The questionnaire requires the nominee to report assets with values, *specified within categories*, for “Valuation of Assets” and “Income Type.” Both of these descriptive categories have pull-down menus. In this illustration, our test nominee has already entered a number of assets and described them. He is currently describing a “Fidelity Puritan Fund” in terms of its “Valuation of Assets.” To do that, he has clicked on the menu and it has pulled-down to reveal the categories available to him for Valuation. Releasing on the highlighted category that best describes the assets (i.e., \$500,000-\$1,000,000), *NFO* will record that information on his financial disclosure document as a check in the appropriate box. See Figure 11 on the following page for an illustration of what the output looks like from this pull-down menu selection.

***NFO* Helps — Pull-down Menus**

All pull-down menus will say “Select a Value” to indicate that you can click on them and the relevant values will drop down. Simply slide down the list and release on the appropriate value and *NFO* will insert that into the form.



Pasting from the Clipboard

NFO allows you to use your text editor program to draft long or complicated answers. You can then copy and paste these answers into the *NFO* answer screens using the EDIT menu on your word processor and some simple keyboard commands described below.

Table 4 summarizes the editing commands recognized by *NFO*. These commands come from the standard keyboard commands in MS Windows. These commands also allow you to work with *NFO* itself to move information around from one response to another.

Table 4. Editing Commands in *NFO*

Command	Keyboard Sequence
Copy	Cntrl-C
Cut	Cntrl-X
Paste	Cntrl-V
Undo	Cntrl-Z

***NFO* Help — Special Characters**

When transferring data from your word processor to *NFO*, you might lose some special characters like the apostrophe (') or the dash (—). You can restore your intended text to the answer by editing it in *NFO*.

Figure 10. An Example of a Pull Down Menu

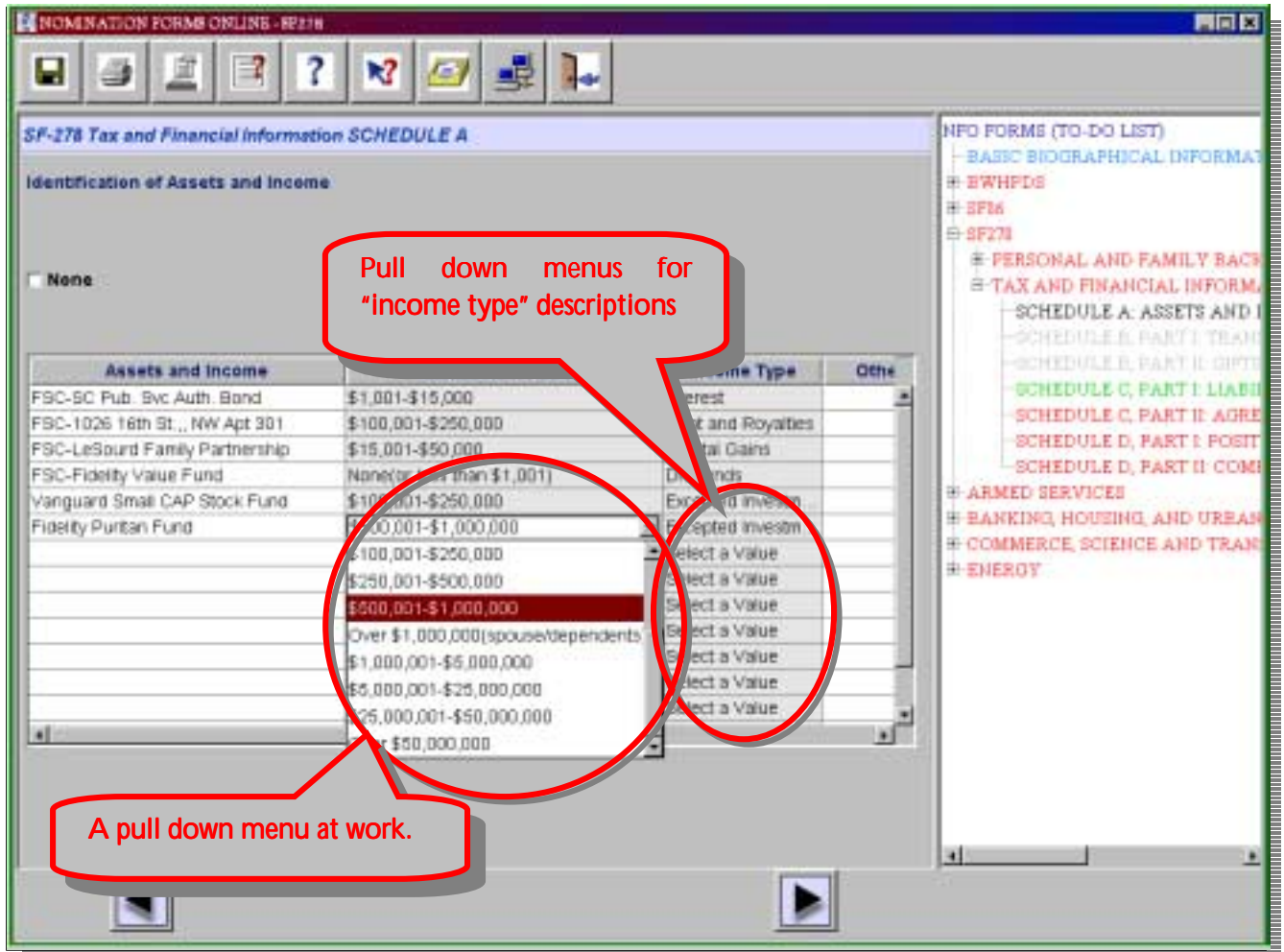


Figure 11. Detail of Output Generated by Pull-Down Menu, SF-278

<p>For yourself, also report the source and actual amount of earned income exceeding \$200 (other than from the U.S. Government). For your spouse, report the source but not the amount of earned income of more than \$1,000 (except report the actual amount of any honoraria over \$200 of your spouse).</p> <p>None <input type="checkbox"/></p>		None (or less than \$1,000)	\$1,001 - \$15,000	\$15,001 - \$50,000	\$50,001 - \$100,000	\$100,001 - \$250,000	\$250,001 - \$500,000	\$500,001 - \$1,000,000	Over \$1,000,000*
6	Fidelity Puritan Fund						X		

SAVING, PRINTING, AND RECORD KEEPING

To *NFO*, each of these three functions relates to its workspace records. When you have finished each screen and as you move on to the next, *NFO* queries you about the state of your answers. It asks you whether you want to save the current information and it asks you if you have finished with this screen. Answers to these questions affect the To-Do List and the status of “submitting” your forms. Answering that you have finished with a screen means that *NFO* will change the To-Do List for that screen from **Black** to **Green**. Since the government will not accept them, *NFO* will not let you submit an uncompleted form. Of course, you can print out and send in any “draft” forms you wish to get a summary judgment or advice from OGE or the White House Counsel or from your agency DAEO. But, the To-Do list for a particular form needs to show **Green** before you can use the submit function.⁸



At any time during your *NFO* session, you can save all of your forms in the current state by using the save function located on the command menu on the upper left side of the screen.



At any time during your *NFO* session, you can print out draft copies of your forms by clicking on the printer icon (next to the diskette icon). Note that doing so will lock in answers on screens that you print (see the section entitled Breaking Upstream Connections on page 3) For more information see the section on Printing the Forms.



At any time during your *NFO* session, you can submit those forms which you have completed by clicking on the submit button. *NFO* keeps a record for you of your submission so that you can recall when you submitted what forms and to whom. See Submit, below.

GoTo Reference:

Printing the Forms

Breaking Upstream
Connections

Submit

Reusing *NFO*

⁸ *NFO* allows you to submit forms individually to the different agencies involved. You must have a specific form **Green** before it will submit.



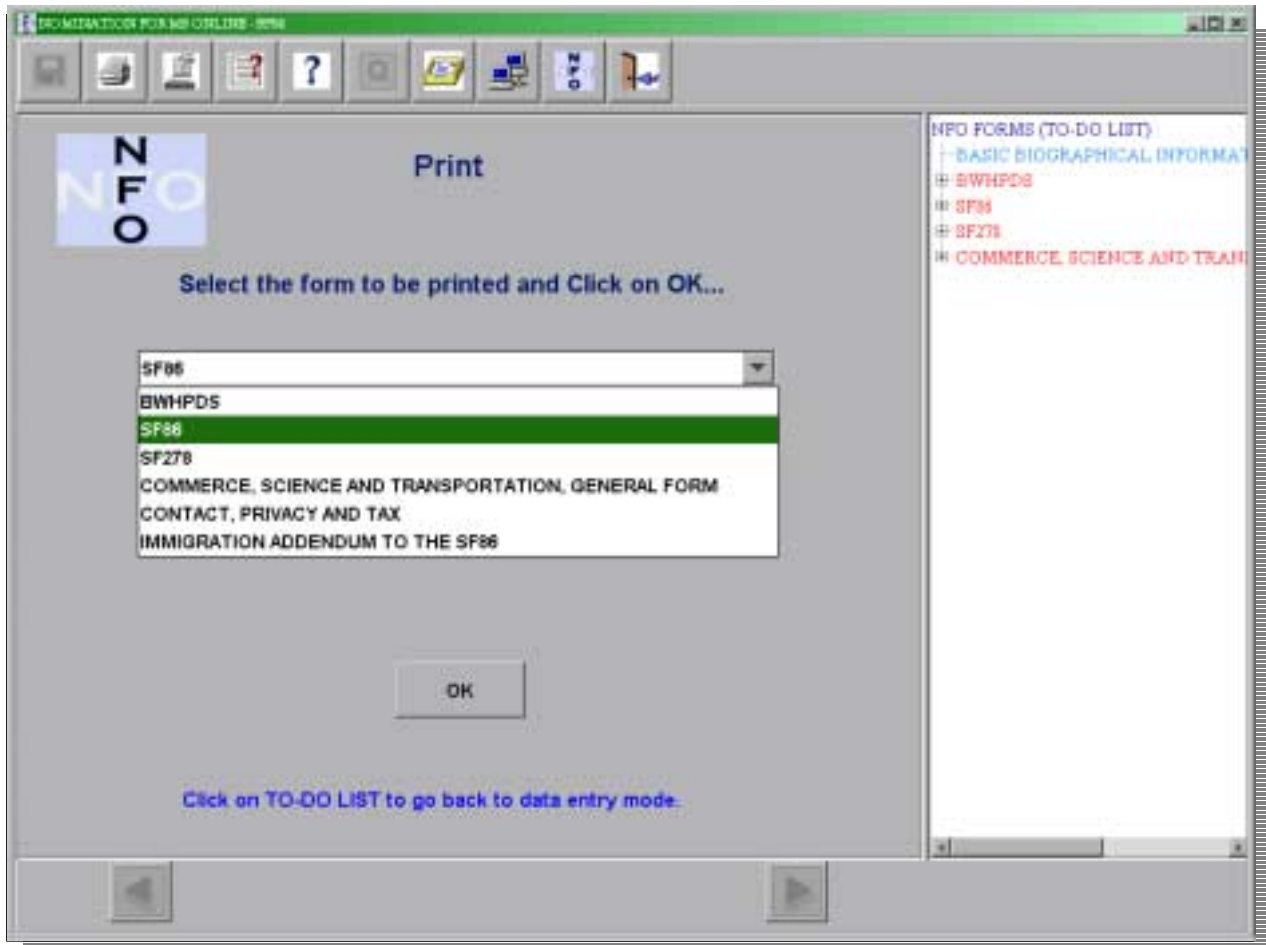
PRINTING THE FORMS

Printing the forms involves two actions: saving the information into the forms and then sending the forms to the printer.

Updating the Forms and Calculating Extension Pages

To begin printing the forms, click on the print icon in the top left corner of the program; you may click this icon at any time in the process. Once you initiate the print function, the program will present the *Print* screen. At the *print* screen, you select the form you wish to print. Figure 12 illustrates that process. To select the form, simply use the pull-down menu and release the mouse on the highlighted form of your choice, as illustrated. Once you have selected the form to print, click *OK* and *NFO* will initiate the process of sending your data to the printing documents.

Figure 12. Selecting Documents to Print



Nomination Forms Online uses Adobe® Acrobat® to place data in and then print your documents. Using Acrobat® allows *NFO* to make multiple copies or “extension pages” on those forms that print multiple pages (e. g., the SF-278, Financial Disclosure, Schedule A, Assets). Using Acrobat® also allows the program to print on almost any printer configured in almost any format. The message “Invoking Adobe® Acrobat®” will flash on the screen of *NFO*. Your computer should take you directly to the Adobe® Acrobat® program and the form you have chosen to print will appear in the Acrobat® window.

Inside Acrobat®, you must scroll through the document to allow Acrobat® and *NFO* to calculate how many extension pages you will need and to populate these forms.

***NFO* Helps — Acrobat®**
The *NFO* interface with Adobe® Acrobat® allows you to use all of Acrobat®'s functions. You may save your document files to the hard drive from Acrobat®, *etc.* Canceling Acrobat® returns you to *NFO*.

Printing the Forms

To finish printing and send the form to the printer, you must click on the print icon in the Adobe® Acrobat® program. Acrobat® will open its standard print dialog box so that you can make choices affecting printing the forms, such as the number of copies you wish to print and to which printer to send the document. Lastly, Adobe® Acrobat® gives you another dialog box detailing your print status.

To print another form, simply go back to the *NFO* program [by using your Windows tool bar] and use the drop down menu to choose another form to print, initiating the process again.



RECORD KEEPING WITH SUBMIT

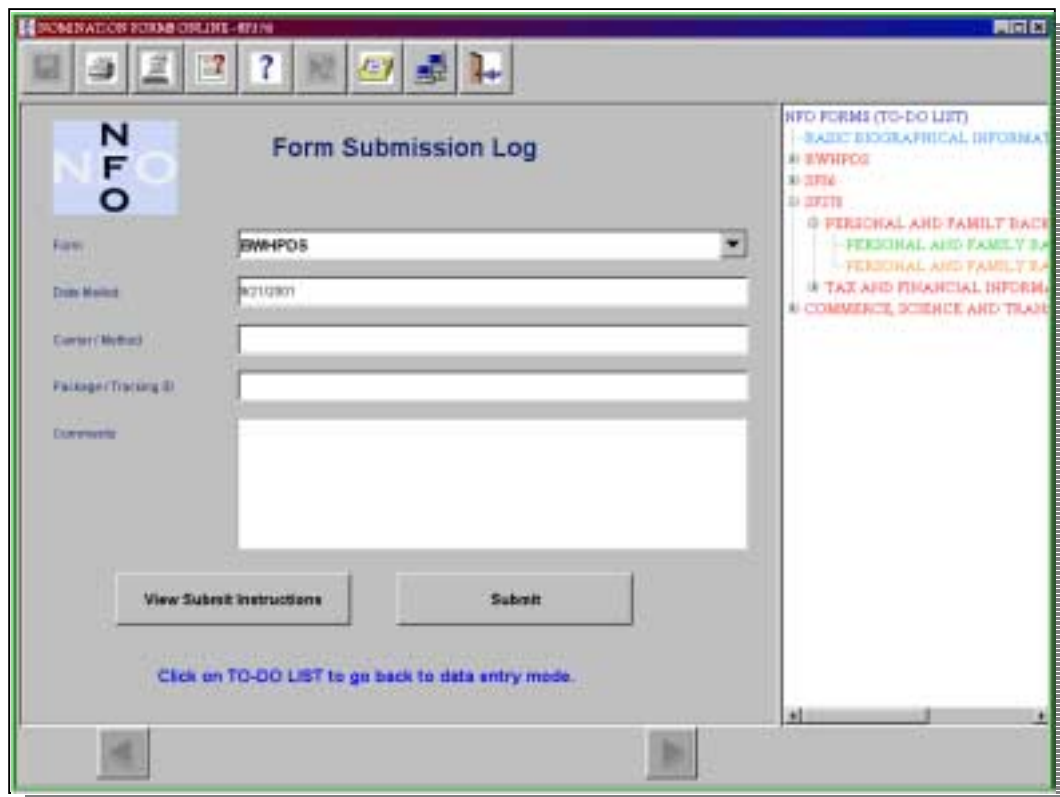
Sometimes, nominees must return several, amended copies of their forms. Using the Submit button located in the upper left corner of the screen, *NFO* allows you to keep records of when and how you sent forms back to the agencies involved with your nomination. Clicking on the Submit button brings up the *Form Submission Log* as illustrated in Figure 13, where you can enter information pertaining to form completion. On the *Form Submission Log* screen, use the pull-down menu to select the form you have submitted. Then fill in the other information asked for: date mailed, carrier/method, package/tracking ID, and comments. Click on the *View Submit Instructions* button to obtain more information on filling in the records. Once you have filled in the information about the form you are submitting, click on the *Submit* button.

Unlike other functions, *NFO* will not allow you to complete record keeping if you have not finished filling in the relevant form. You can check the status of the form you wish to submit by noting whether or not all of its items in the workspace To-Do List appear **green**, including any attachments (see the earlier section on Attachments on the To-Do List) or reminders lists that you need to completed. Note for example, in the illustration in Figure 13, the Bush White House Personal Data Statement (BWHPDS) does not appear green (gray in print) and, hence, *NFO* will not allow recording this form as submitted.

***NFO* Help — Submitting**

Please note that this function in *NFO* does *not* transmit forms to the Federal government, to the White House or to the Senate. It merely allows you to keep track of when and how you have submitted forms. No agencies currently have plans to implement electronic submissions of forms.

Figure 13. Logging Your Submitted Forms



REUSING NFO

RESTRUCTURING YOUR APPLICATION

Once you have started filling out your forms using *NFO*, you can change the forms you need to file distributed at any time. If it becomes necessary to file an additional form, the *Restructure* command allows you to simply select the new form and *NFO* distributes the information already entered to that new form. To select an additional form, simply choose *Restructure* on the Introduction Screen. Once you choose restructure, the *Identifying the Forms You Will Need* screen allows you to alter the forms the program is assisting you in filling out. A check will appear in the box to the left of the forms previously selected. Simply click the box on any additional forms necessary to complete or uncheck any forms you no longer wish to include. Use the motion arrows at the bottom left of the screen to advance to data entry portion of *NFO*.

FILING YOUR ANNUAL FINANCIAL DISCLOSURE (SF278)

One of the particularly nice features of *NFO* is the ability for you to use the program after the nomination process is complete to fill out the United States Office of Government Ethics Standard Form 278, the Public Financial Disclosure Report, in future years. *NFO* minimizes your need to reenter information from previous years' forms.

If you want to save your originally filed documents in electronic form, follow steps a, b, and c below; then copy the four files to your new directory. You can then proceed with using the program and altering the SF278 to fit the current year. Simply delete the outdated information and enter the information pertinent to the current year.

MAKING A PERSONAL NFO DATABASE

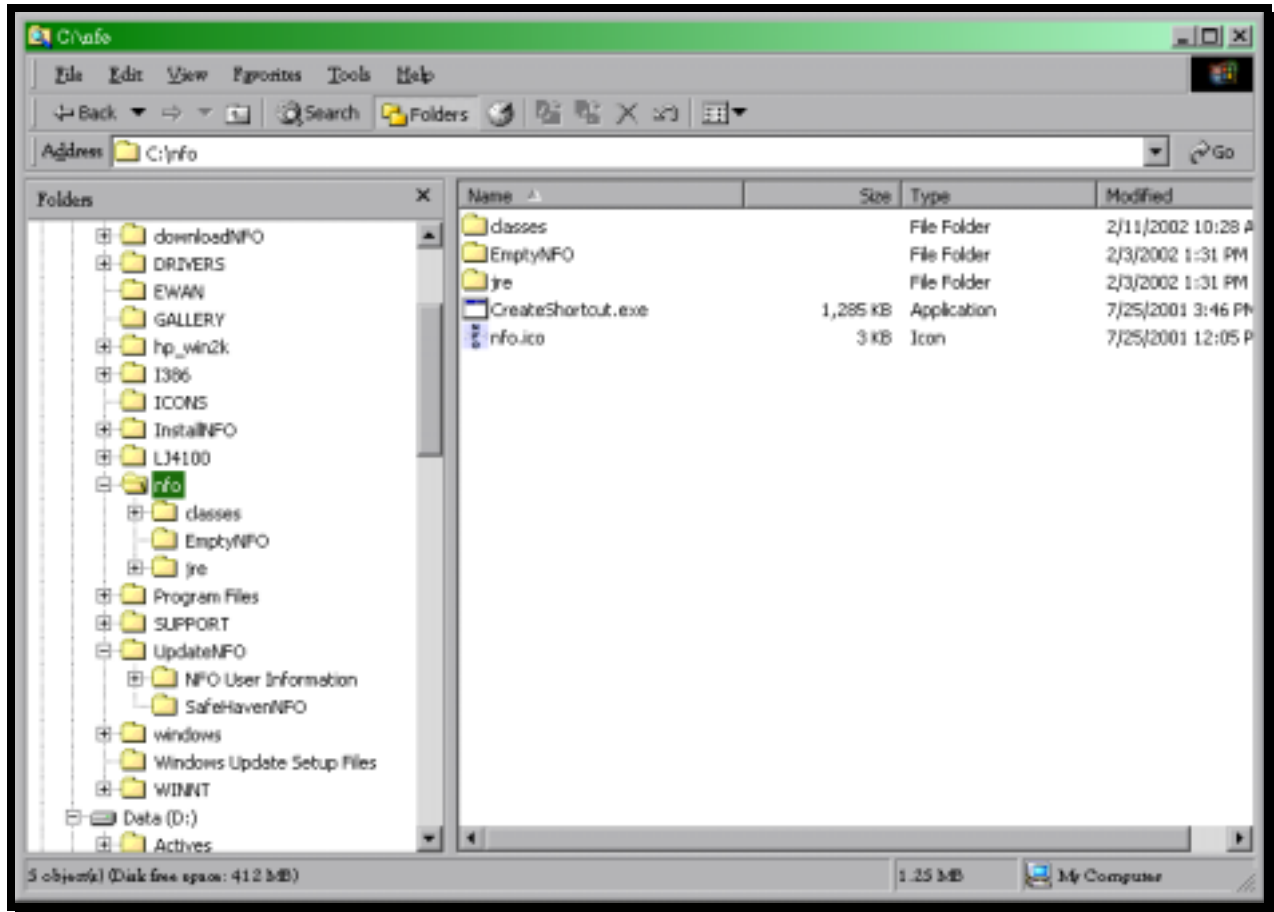
Nomination Forms Online saves your personal data in four separate files in the *nfo/classes/* directory: *nfo.backup*, *nfo.data*, *nfo.properties*, *nfo.script*. Because it stores the data in separate files outside of the program, *NFO* can work on multiple individuals, multiple submissions from the same individual, or share the same individual's information across machines with *NFO* installed.

In order to create a separate file of information for you or for someone else, you need to create a directory in the *nfo/classes/* subdirectory for that person. In order to free *Nomination Forms Online* from your own data, (and make it ready to work on someone else), you follow these simple instructions:

- a) From the Start/Programs menu, launch Window Explorer.
- b) Locate and open the *nfo* directory and then its *nfo/classes* subdirectory. See Figure 14, below.
- c) From inside the *nfo/classes* directory, create a new directory with your name, e.g., "Trent Hayden."
- d) Drag the four files listed above (*nfo.backup*, *nfo.data*, *nfo.properties*, *nfo.script*) from the *nfo/classes* directory into your Trent Hayden directory.
- e) In the *nfo/classes* directory locate and open the directory marked "Empty*NFO*." In that directory you will find new, blank versions of the *nfo* databases.
- f) Highlight these four files and using the Edit Menu/Copy command, copy these files into the *nfo/classes* directory.

- g) Restarting *NFO* at this moment will produce a “New Forms” session in which *NFO* has no data entered. You have successfully initiated a new *NFO* session.

Figure 14. *NFO* Directory from Windows Explorer



Making a Version of NFO For a Family Member

If you wish to use *NFO* to prepare forms for someone else who will have virtually the same basic information but has a different name (say your spouse), then you should see the section on Financial Disclosure. There you would find instructions on how to make a new version of your data and save it into an archived directory. You can then restart *NFO* and simply restructure the program using the Restructure button. At that point you can change the name of the nominee and edit the basic information throughout *NFO*, including identifying a different Senate Committee of jurisdiction (thus building a new Workspace).

GoTo Reference:
Financial Disclosure

USING *NFO*'S PORTABILITY TO MAKE EXTERNAL DATA FILES

If you wish, you can send all of your answers to *NFO* through email. You can do that job in one of two ways. In one way, the way we might ask you to if you need serious consultant help, you would send the data files that *Nomination Forms Online* keeps for its own use. *Nomination Forms Online* writes these files in its own special code and only it can use the answers. We will tell you which files you would need to send.

A second way, though, involves sending files that *NFO* writes out in a special protocol readable by other programs, such as Microsoft's EXCEL spreadsheet program or many of the "contact manager programs" that personnel systems use. You can allow other programs to access your answers so that those programs can compile your information in an internal personnel system, like the White House Personnel system's Telemagic® program.

You can reach this facility either by clicking on the Port Data button on the *NFO* task bar or by clicking on the button entitled "Portable File" from the *NFO* entry panel (see Figure 6 earlier in this manual). Using either method, the command brings up the *Portable File* screen. You have the option of choosing which form to work with by using the pull-down menu. Clicking OK launches Microsoft Internet Explorer and then creates your data in *xml* format. You then have the option of saving the data to a disk or a file. Use the *save as* feature to choose where you would like to save this document.

NFO will not allow you to choose a form that you have not completed. See the earlier section on how to check about completing Attachments in the To-Do List and their impact on these kinds of tasks.

GETTING HELP WITH *NFO*

In addition to the help facilities embedded within the program itself, *Nomination Forms Online* offers a range of assistance to you. After talking about our philosophy about your privacy, this section reviews those helpful options.

PRIVACY UNDER *NFO*

Maintaining the security of your information represents one of the most important operating principles of *Nomination Forms Online* Program and the White House 2001 Project. That principle led us to program *NFO* as a stand-alone program on your machine so that you could control all of the relevant information. It also constitutes a major consideration in how we provide assistance for nominees having difficulty with the program.

In order to resolve your problem, we *will* need some basic contact information, however. The White House 2001 Project will not divulge the name of any callers to any sources outside of the *NFO* staff required to service your request. We require contact information for two reasons:

- 1) In case we lose our connection, we will have the means of getting back to you.
- 2) In rare instances, we will need time to diagnose your problem and research an effective solution. In those situations, we will need contact information in order to provide you with this solution in a timely fashion. Since we have staff working virtually around the clock, it should be possible to get back to you in a reasonable amount of time.

If You Represent the Nominee

The White House 2001 Project recognizes that not every nominee files their own forms and so we will work with a nominee's representative. We respect your responsibilities as a representative to protect the identity of your principal and will do everything that we can to preserve that relationship. We will, however, need *some* information that allows us to keep unique records on your problem or help call so that we can contact you. When you call, please have devised some way to maintain the unique identity of your client for our record keeping.

HELP WITHIN THE PROGRAM

NFO carries a full line of helpful assistance on board and accompanying the program itself. This manual represents one obvious source of assistance. In addition, the software carries with three separate assistance functions

Form Help



The first, called "Form help" provides useful information from the sources of the forms you must file. The program itself carries all of the instructions found on the hard copy forms you have received. *NFO* correlates these instructions to each of its questions, so that wherever you have

HOW TO CONTACT CALLNFO

CallNFO

1-888-388-1015

You can use our 888-service to get toll-free phone help from our help desk at the University of North Carolina at Chapel Hill. *CallNFO* handles calls directly or through a call-back system depending on what time of the day and day of the week you call.

CallNFO Hours

see whitehouse2001.org/callinfo

You can find out the hours of the CallNFO help desk by checking our website: whitehouse2001.org/callinfo.

Email NFO

helpnfo@whitehouse2001.org

You can get a good turn-around response with our email system. You write us and we check out the problem. If we can find a ready-made solution, we will email that back to you. If not then we will promptly call you back or email you to help out.

Table 5. Basic Information Form For CallNFO

What we need to know:	Where to find it:	Your answer here:
Version of <i>NFO</i>	On the CD-Rom itself or click <i>NFO</i> icon on the tool bar in the program window.	
Computer:		
Operating system	Click on Windows "Start" menu. When the menu appears, read down the left hand side for the name of the operating system: e.g., "WindowsNT," "Windows 2000 Professional" See Figure 16. If this does not work, double click on 'My Computer' on your desktop, double click on the 'control panel' folder icon, double click "System" icon. See Figure 17 for an illustration.	
Printer:		
Brand & Model	Look on the front of the printer for a brand name and model number, e.g., HP LaserJet 4000N.	
Driver Information		
Contact Information	See the section on "Privacy" on page 31.	Name: Phone: email: fax:
Nature of the problem	Observe when the problem arises: What hardware is at work? What other programs are open?	
The type of appointment	From the White House or your new agency head.	
Have you called before?	See section on "Privacy" on page 31	
Call <i>NFO</i> Incident #	You get a tracking number from the Call <i>NFO</i> Help Desk	

BASIC INFORMATION TO HAVE READY

When you contact us, please have ready information about your program and your computer so that we can understand how to duplicate your problem if we need to. Table 5, on the next page, summarizes the useful information that the CallNFO staff will need. It also gives you direction on how to find the needed information. We also provide additional copies of this form in the appendix for your use on later calls.

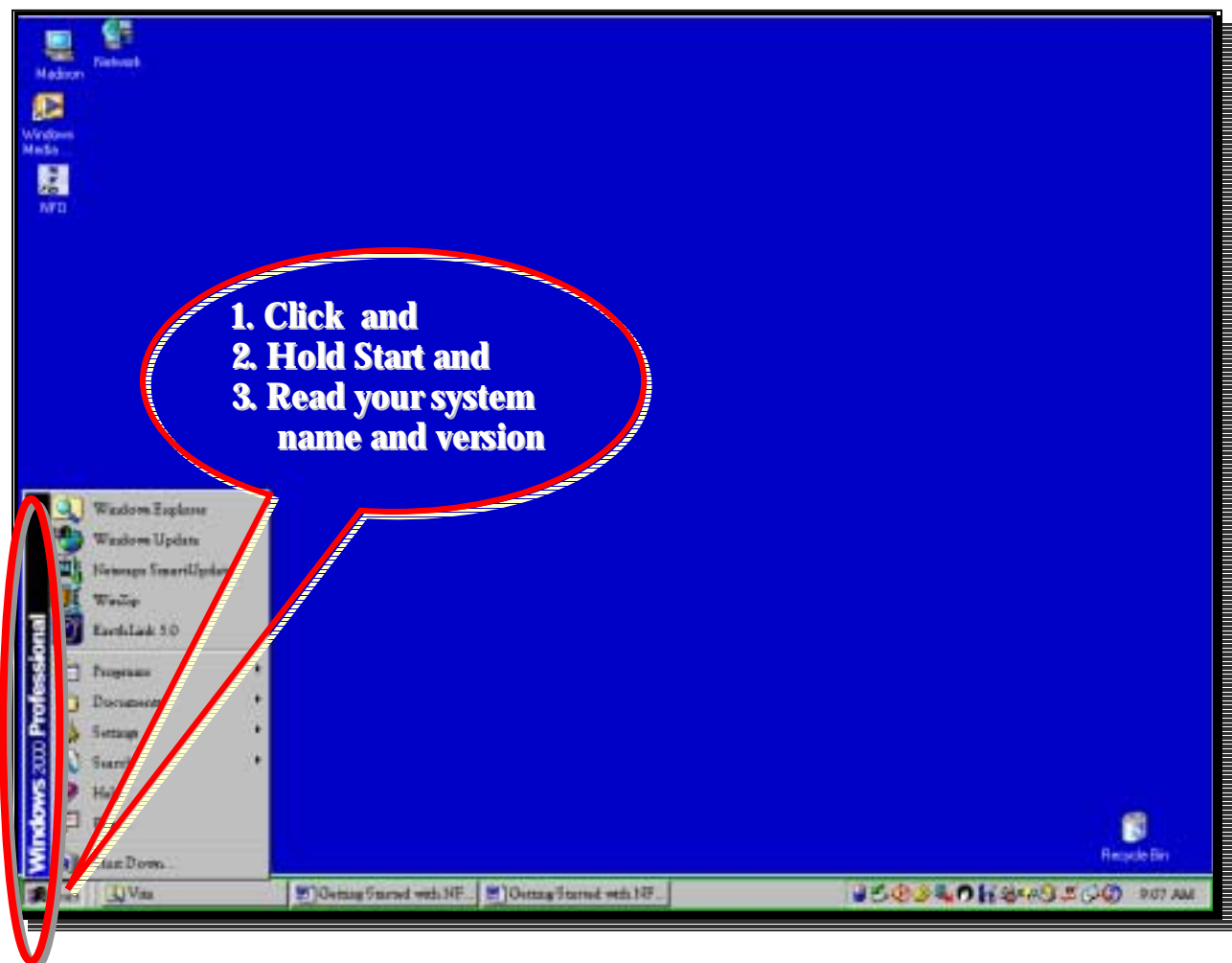
Nomination Forms Online Version

Over time, we intend to improve *NFO*, adding features and expanding its capabilities. In order to maintain records on these innovations, we regularly number the different versions of the program. We store that information in the icon on the task bar at the top of the working program.

Your Computer's Operating System

To find what type of operating system you are using you can simply click on the "Start" button on the MS Windows tool bar. A menu will appear and on the left side of the menu Windows tells you what system you have. In Figure 16, for example, the Start Menu indicates that the Windows 2000 Professional drives this computer.

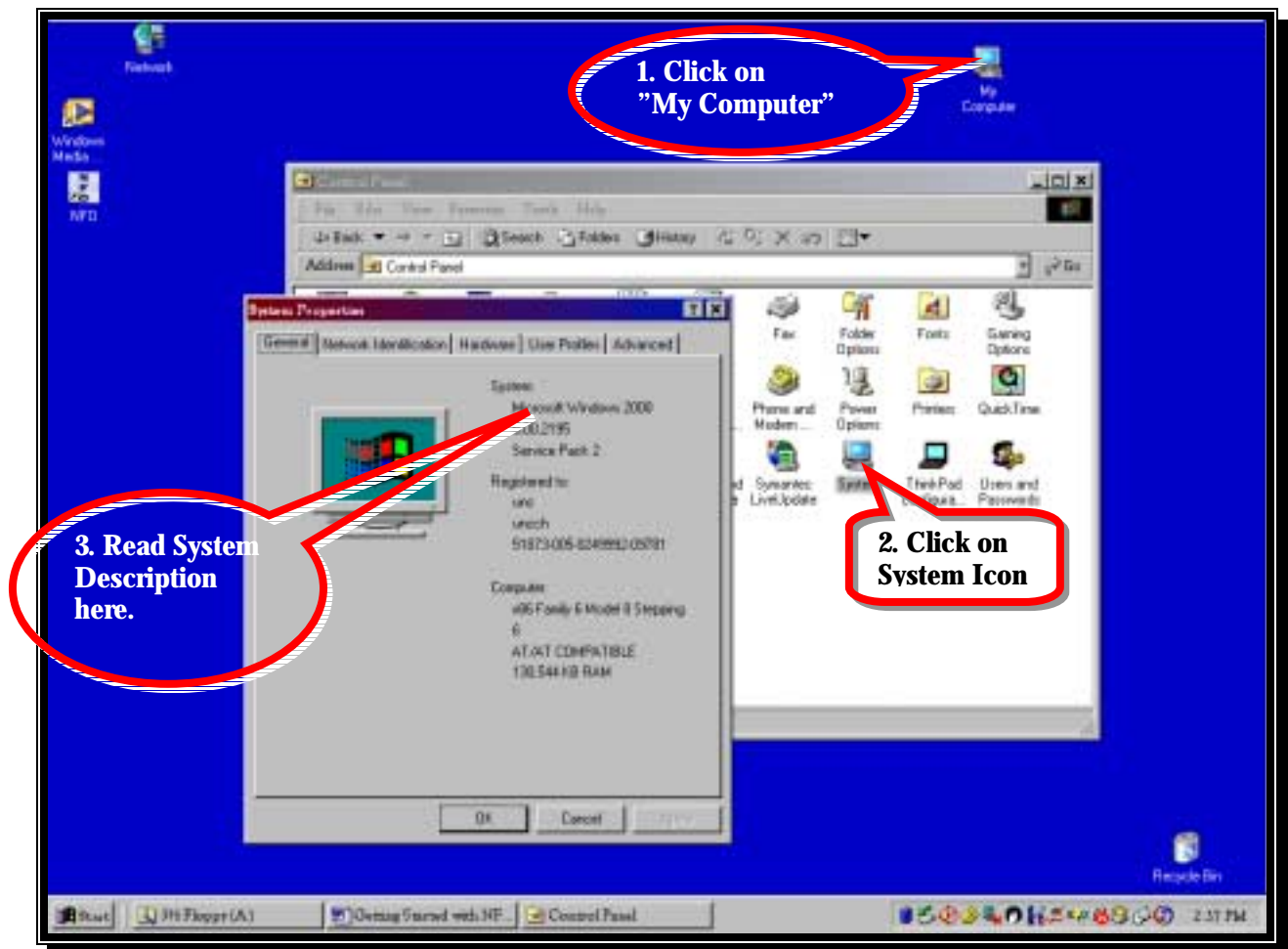
Figure 16. Finding the System on the Start Menu — 1, 2, 3



If this simple approach does not work, you should try either of the following:

- a) On the desktop find and then double click on the “My Computer” icon. See Figure 17, below for an illustration of this approach. Double click on “Control Panel,” double click on “System.” Make sure that the “General” tab shows (if not click on it). Under the word “System,” you will find information regarding the operating system (e.g. Windows 2000, Windows 98, Windows NT, Windows 95).
- b) Or, from the Start menu, click on “Settings” and then “Control panels” from there, then follow the steps outlined above. This approach not illustrated.

Figure 17. The System Information Panel — 1, 2, 3



Printer Information

Printing with *NFO* involves three things — Adobe Acrobat® Reader, your printer, and a “print driver.” The last thing in the list — a print driver — receives instructions for printing from Acrobat® and translates them into very specific control statements for your specific printer. These driver instructions direct the movement of print heads (they *drive* it) or they describe where the laser should charge the paper in order to take the toner which makes your printed page. In any case, print drivers carry out a very specific function on

the computer and must correspond very specifically to the exact printer you use. Many printers, like the HP family of laser printers, have a number of alternate print drivers available. Sometimes, printing problems resolve themselves when we switch print drivers or update the print driver.

Locating Your Printer "Driver"

The printer has a piece of software (a print "driver") on your computer that translates instructions from programs into a language that the printer can understand. Many printers have several different drivers that work with it and which one you use may vary.

Figure 18 illustrates the 1,2,3-steps necessary to locate your print driver information. First, click and hold on the Start Menu and release on the Settings, then the Control Panels elements. This action opens the Control Panels window, as illustrated. Second, double click on the Printers folder opening another window that lists all printers currently accessible to your computer. One of those printers has a check mark over it indicating which printer your machine addresses as its "default printer." Third, click on that printer and right click and release on "Properties" to get the information panel we need. Click on the "Advanced" tab and read the driver information off the window as illustrated.

Right-click on that folder, and a panel opens with information about the printer. Click on the "Advanced" tab. In the "Driver" window you can read the name of the print driver. In this case, the printer employs the "HP LaserJet 4100 PCL 6" driver. Under some circumstances, the help desk staff may ask you to select a different driver.

Nature of the Problem

Of course, anything that you can tell the Help Desk staff about the nature of your problem will help us solve it. Try to note, for example, whether the problem involves your software, general information, or printing. Note if you have any other programs open or active in the Windows task bar.

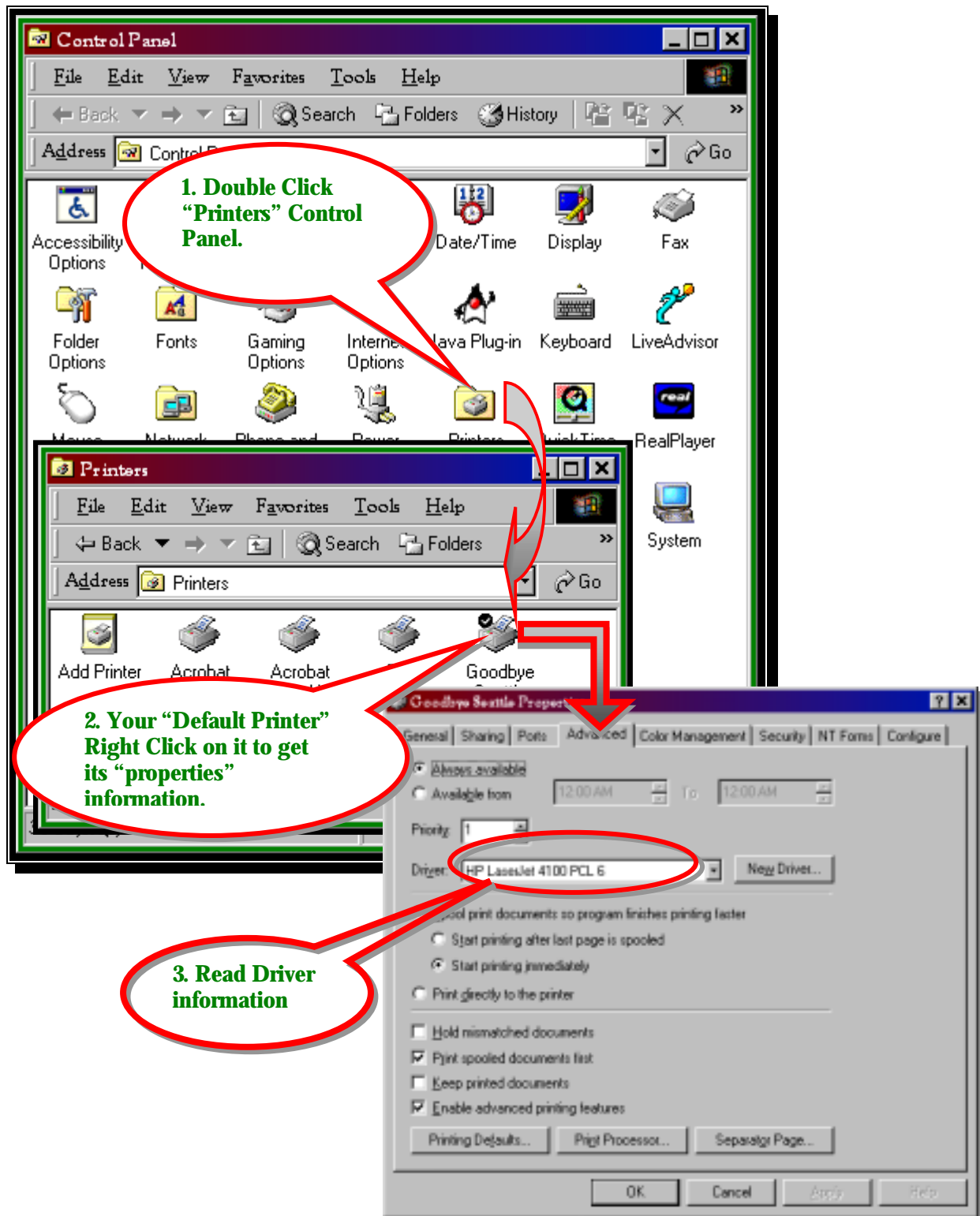
Type of Appointment

In order for us to properly address your problem, we will need to know the position of the appointee. These can be categorized as: presidential appointments to the Executive Branch, presidential appointments to the White House staff, presidential appointments requiring Senate confirmation, Schedule C, or Select Executive Service.

IF YOU HAVE CALLED BEFORE?

Please inform our team member whether you or the person you represent have called before, allowing us to more rapidly grapple with your issue. If you have the incident number from that previous call, that would help.

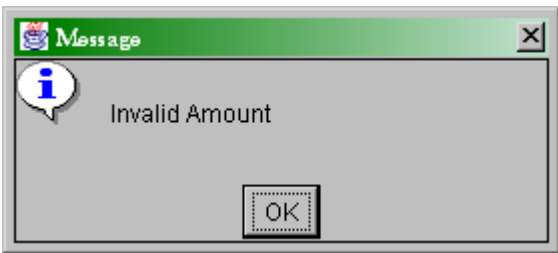
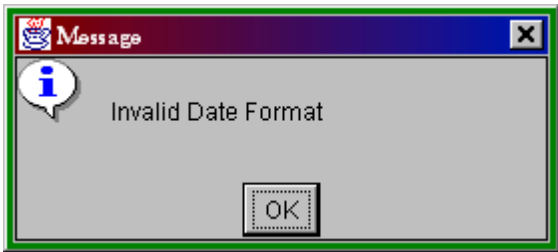

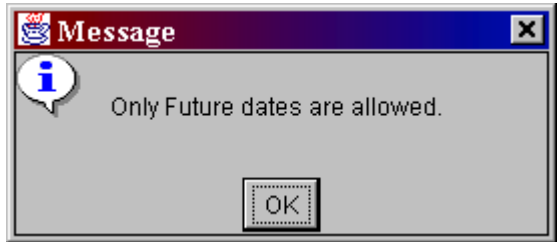
Figure 18. Locating Your Print Driver — 1, 2, 3

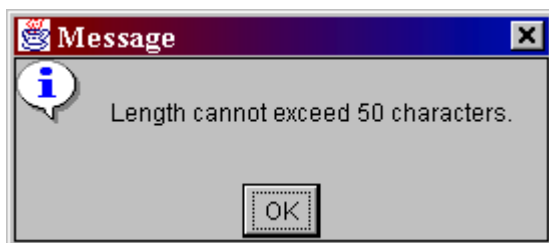
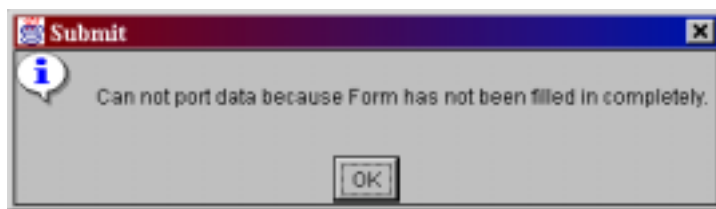
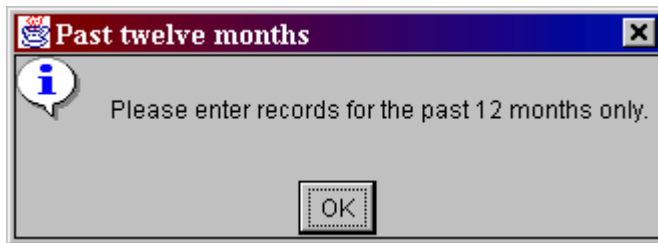
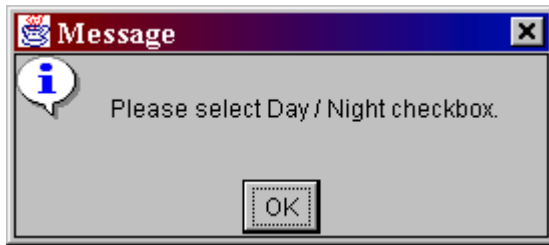


SOME NFO ERROR MESSAGES

The software has a number of error checking capabilities. For example, *NFO* checks to make sure you enter the right kind of information when you use dates or phone numbers. When you don't give it the right kind of information, it lets you know with an error screen. Table 6 summarizes some of the most often seen error messages. If you see others and don't understand them, call our help desk at Call*NFO*.

Table 6. *NFO* Error Messages

<i>NOMINATION FORMS ONLINE</i> Message	Description
	<p><i>Invalid Format:</i> <i>NFO</i> has detected an amount entered which it cannot accept. This error usually results from entering extraneous characters, like a \$-sign or a comma in an amount (i.e., "\$40,000") when you should enter only the amount itself (i.e., "40000") as you would in a spreadsheet program.</p>
	<p><i>Invalid Date Format:</i> <i>NFO</i> has detected an entry on a date question that does not match the required format for that question. In this case, the nominee entered "01/21/55" when <i>NFO</i> expected "01/21/1955" to match the format required on the question: "mm/dd/yyyy."</p>
	<p><i>Future Dates:</i> <i>NFO</i> has detected a date in the future where it expects no such date. The software will not allow such entries. Please recheck dates entered.</p>
	<p><i>Future Dates:</i> <i>NFO</i> has detected a date that is <i>not</i> in the future where it expects one. Please recheck dates entered.</p>

NOMINATION FORMS ONLINE Message**Description**

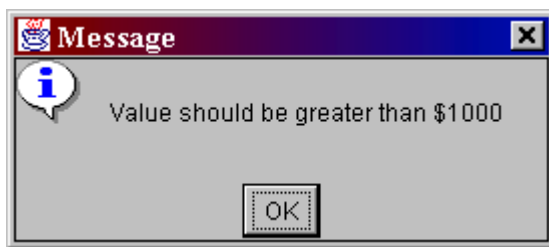
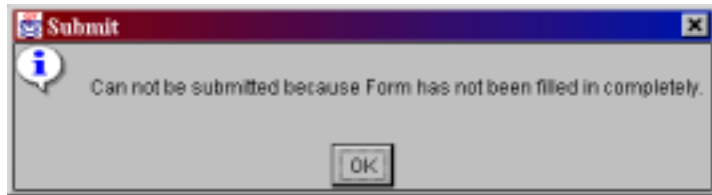
Day/Night Checkbox: Some forms requiring information, especially phone numbers, ask you to indicate whether the number apply during the day or night. In this instance, the nominee forgot to check the appropriate box indicating day or night.

Time Limits: NFO keeps track of whatever time limits the forms require. For example, this question asked for an event with an end date within the preceding twelve months; the date entered was earlier than the preceding twelve months. Please check the entry dates.

Form not Complete: NFO will allow you to use networking button only *after* you have fully completed the form. You should check to make sure that everything in the To-Do List for that form has turned **GREEN**. Where it has not, return to that section and complete it. Be sure to check that you have clicked on any "Attachments" indicating that you have completed these as well. Be sure to check that you have completed all attachments tasks in the To-Do List for this form. See the earlier section on Attachments

Character Limits: NFO administers a number of restrictions set on the forms, primarily having to do with limited space of answers. Where it can reproduce your answers on extension sheets, NFO will do so. In this case, the form requires that the response to this question not exceed 50 characters. Do not exceed the number of characters allowed by NFO. Please note that questions may have different character limitations.

NOMINATION FORMS ONLINE Message

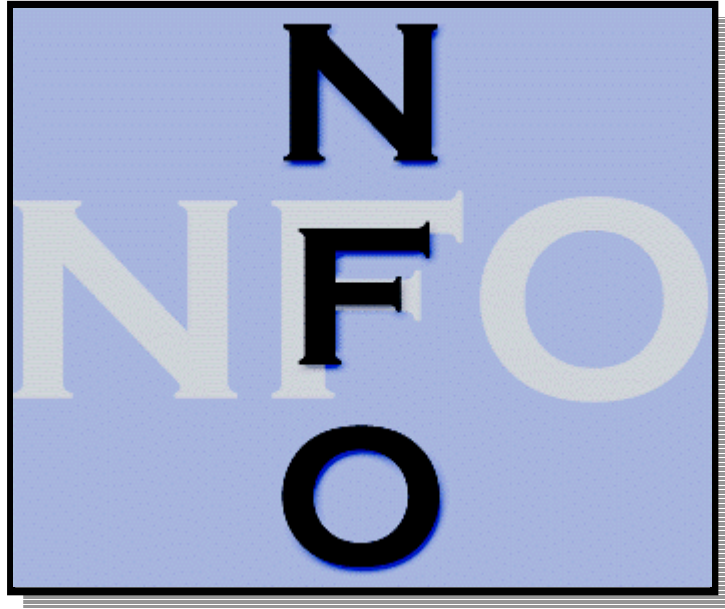


Description

Form not Complete: NFO will not allow you to use the Submit function for record keeping if a form has not been completed. You should check to make sure that everything in the To-Do List for that form has turned **GREEN**. Where it has not, return to that section and complete it. Be sure to check that you have clicked on any “Attachments” indicating that you have completed these as well.

Value Does not Exceed: NFO expects to record information on this question *in excess* of some fixed amount — in this case \$1,000. Your entry has not exceeded that lower limit. You can either enter another dollar amount (if the correct amount exceeds \$1,000) or you can remove the entered information as it does not exceed \$1,000.

Value Does not Exceed: NFO expects the answer to exceed a certain minimum — in this case, age should be after your 21st birthday. The entered information did not exceed that minimum. You can either enter information with the appropriate date (exceeding your 21st birthday) or you can remove the entered information as it does not exceed the lower limit.



GENERAL REFERENCE TEAR SHEETS

WORKING TOOLBAR**Functional Buttons**

Save — Clicking on it will allow you to save the forms and work you have already completed.



Print — Clicking on it allows you to print any forms at any time.



Submit — Clicking on this button allows for a record keeping function of the program printouts. This function is allowed only when you are completely finished with the forms. This function insures that should any problem occur with delivery or receipt of the materials you will have a complete record of all the completed forms.



Email — Clicking this button allows you to e-mail the Help Desk at *NFO* if you have MS Outlook Express. To email the Help Desk with other programs, you must return to the opening screen of *NFO*.



Portability — Clicking on this button allows you to save your database of responses on each form in an easy to separate electronic document. This document or portable file allows you to send your data electronically, through email or on a disk, to others, as you like.



Exit — When you click on this icon the *NFO* program will shut down. It will ask you first if you want to save any changes that you have made. After your response, *NFO* will proceed to record the status of the program, your place in the Workspace To-Do list, and then it will close up

Help Buttons

Form Help — This help function presents the nominee with instructions taken from the relevant government form. The instructions exactly match those the nominee has in hardcopy provided by the White House or the Agency or the Senate.



NFO version. Clicking on this icon will give you the current version of the software. You will need to give this information to the Call*NFO* help desk.



General Help — This help function resembles Windows help. It has a *Table of Contents* that allows you to click on a topic. The *Index* and *Find* functions allow you to search for specific words or phrases.



Query — If you are unsure about how to answer a particular question, click on this icon (after clicking on the answer space for that question) and it will give you any other, more detail information we have about the question and what it requires. As always, though, *Query* relies on the government forms for further information.

COLOR CODING ON THE TO-DO LIST

Nomination Forms Online keeps track of your progress in completing forms. In the “To Do” List, *NFO* portrays your progress with color coded text. The following table explains that coding.

Black text	The current working screen, where the nominee inserts data.
Red text	Screens yet to begin work on.
Orange text	A screen partially completed but not ready for submission.
Green text	The nominee has finished the screen and ready to file it.

FORMS INCLUDED IN NFO

The following table lists the forms *NFO* will fill out and print for you to file.

<i>Form Name</i>		<i>Form Name</i>	
Executive Branch Forms	<i>Bush Personal Data Statement</i>	Senate Committee of Jurisdiction	<i>Agriculture/ Agriculture Department</i>
	<i>Contact Sheet</i>		<i>Agriculture/ Farm Credit Administration</i>
	<i>Tax Waiver (IRS Check Release)</i>		<i>Agriculture/Commodity Futures Trading</i>
	<i>Credit Check Release</i>		<i>Agriculture/ Federal Agricultural Mortgage Corporation</i>
	<i>Memorandum from Counsel initiating FBI investigation</i>		<i>Armed Services</i>
	<i>SF86 — National Security Background</i>		<i>Banking, Housing & Urban Affairs</i>
	<i>SF86 continuation sheet</i>		<i>Commerce, Science and Transportation, Departments</i>
	<i>SF86 Supplement & Medical Records Release</i>		<i>Commerce, Science and Transportation, Boards/Commissions</i>
	<i>SF 86 Immigration addendum</i>		<i>Commerce, Science, and Transportation, NOAA</i>
	<i>SF278 — Financial Disclosure</i>		<i>Commerce, Science, and Transportation, Coast Guard</i>
<i>SF450 — Financial Disclosure, short</i>	<i>Energy and Natural Resources</i>		
	<i>Environment and Public Works</i>		
	<i>Finance</i>		
	<i>Foreign Relations</i>		
	<i>Governmental Affairs</i>		
	<i>Indian Affairs</i>		
	<i>Judiciary/ Non-Judicial</i>		
	<i>Judiciary/ All Judicial Nominees</i>		
	<i>Health, Education, Labor and Pensions</i>		
	<i>Rules and Administration</i>		
	<i>Small Business</i>		
	<i>Veterans Affairs</i>		
	<i>Select Intelligence</i>		

A COPY OF THE BASIC INFORMATION FORM FOR CALLNFO

What we need to know:	Where to find it:	Your answer here:
Version of <i>NFO</i>	On the CD-Rom itself or click <i>NFO</i> icon on the tool bar in the program window.	
Computer:		
Operating system	Click on Windows "Start" menu. When the menu appears, read down the left hand side for the name of the operating system: e.g., "WindowsNT," "Windows 2000 Professional" See Figure 16. If this does not work, double click on 'My Computer' on your desktop, double click on the 'control panel' folder icon, double click "System" icon. See Figure 17 for an illustration.	
Printer:		
Brand & Model	Look on the front of the printer for a brand name and model number, e.g., HP LaserJet 4000N.	
Driver Information	Look in Start Menu, Settings, Control Panels, Printers, Default Printer, Properties. See the section on "Your Printer "Driver"" on page 37.	
Contact Information	See the section on "Privacy" on page 31.	Name: Phone: email: fax:
Nature of the problem	Observe when the problem arises: What hardware is at work? What other programs are open?	
The type of appointment	From the White House or your new agency head.	
Have you called before?	See section on "Privacy" on page 31	
Call <i>NFO</i> Incident #	You get a tracking number from the Call <i>NFO</i> Help Desk	

[Intentionally blank]

GUIDE TO “DOWNSTREAM” EDITING

In order to help nominees manage their editing, this section describes the relationship between questions asked on the three principal Executive Branch forms. Table 7 presents information designed to help you track out answers you need to consider when you have edited upstream questions.

In using this table, note the following:

- i) The table only lists inquiries on the Executive Branch forms. Be sure to look for similar questions on the relevant committee questionnaire, as well.
- ii) Most nominees will only file a SF278 *or* an SF450 but not both.
- iii) The table only lists those inquiries that repeat on several forms. You may edit other questions that appear only once on the several forms.
- iv) The table indicates with numbered screens (e.g., 1,2,3) when related inquiries appear on several screens on a form.
- v) Some screens listed may have more than one related question.

Table 7. Relationship between Downstream Questions

If you make a change in this topic...	Then Re-examine Answers in These Screens as Well... ⁹			
	On the PDS	On the SF86	On the SF278	On the SF450
Assets and Income			1) Schedule A 2) Schedule D, Part II	Address\Assets
Bankruptcy, Garnished Wages and/or Repossessed Property, Liens, Debts		1) Financial Record 2) Financial Delinquencies...		
Breach of Ethics, Unprofessional Conduct, Sources of Embarrassment, etc.	1) Sources of Embarrassment... 2) Critics of Your Appointment...	1) Breach of Ethics... 2) Adults Living With You...		
Business Affiliations		1) Affiliations\Property 2) Convictions\Investigations...	Schedule D, Part I	
Candidate for Public Office	Loan Payments and Obligations...	Breach of Ethics...		

⁹ In particular, you should examine screens on forms to the right of the form on which you have made a change.

If you make a change in this topic...	Then Re-examine Answers in These Screens as Well... ⁹			
	On the PDS	On the SF86	On the SF278	On the SF450
Citizenship		1) Citizenship (I) 2) Citizenship (II) 3) Immigration (II) 4) Immigration (III)		
Commitments: Current and Future	1) Loan Payments and Obligations... 2) Commitments with Business...		Schedule C, Part II	Future Employment...
Controversial Organizational Membership	Association with Controversial...	1) Association Record 2) Breach of Ethics...		
Court Record		1) Financial Record 2) Financial Delinquencies... 3) Convictions\ Investigations...		
Current Marital Status	Information About Spouse	Spouse (I)		
Date of Appointment			Personal and Family Background Part I	Personal Information
Date of Birth	Automatically updated when changed on the "Basic Biographical Information" screen.			
Employment Activities		1) Employment\ Acquaintances 2) Medical Records...	1) Personal and Family Background Part II 2) Schedule C, Part II 3) Schedule D, Part I 4) Schedule D, Part II	1) Address\Assets 2) Liabilities... 3) Future Employment...
Foreign Activities		1) Foreign Activities (I) 2) Foreign Activities (II) 3) Foreign Activities (III)...		
Gifts, Reimbursements, and/or Travel Expenses			Schedule B, Part II	Future Employment...
Health	Commitments with Business...	1) Medical Records... 2) Alcohol Investigations		
Home Address	1) White House Contact Sheet 2) Tax Check Waiver (I)			Address\Assets
Home Telephone	1) White House Contact Sheet 2) Tax Check Waiver (I)	Other Identifying Information		
Illegal Substances	1) Illegal Substances... 2) Illegal Substances (B)...	1) Police Record (II) 2) Drug Activity		
Liabilities			Schedule C, Part I	Liabilities...

If you make a change in this topic...	Then Re-examine Answers in These Screens as Well... ⁹			
	On the PDS	On the SF86	On the SF278	On the SF450
Military Service		1) Relatives and Associates' Citizenship... 2) Foreign Activities (III)...		
Name	Automatically updated when changed on the "Basic Biographical Information" screen.			
Office Address	White House Contact Sheet		Personal and Family Background Part I	
Other Names Used	Name\Position Nominated	Personal Information		
Place of Birth	Automatically updated when changed on the "Basic Biographical Information" screen.			
Police Record		1) Police Record (I) 2) Police Record (II)		
Position	Automatically updated when changed on the "Basic Biographical Information" screen.			
Relatives and Cotenants		1) Former Spouse... 2) Immigration (IV) 3) Relatives and Associates' Citizenship... 4) Adults Living With You...		
Sexual Harassment or Discrimination	Sexual Harassment or Discrimination...	Breach of Ethics...		
Social Security Number	Automatically updated when changed on the "Basic Biographical Information" screen.			
Spouse's Information	1) Information About Spouse 2) Tax Check Waiver (II)	1) Spouse (I) 2) Spouse (II) 3) Former Spouses...		
Taxes	1) Income Tax Return 2) Tax Penalties, Collections and Audits... 3) Tax Check Waiver (II)			
Transactions (Purchase, Sale, or Exchange of real property, stocks, bonds, commodity futures, and other securities)		Affiliations\Property	Schedule B, Part I	
Work Telephone	1) White House Contact Sheet 2) Tax Check Waiver (I)	Other Identifying Information	Personal and Family Background Part I	Personal Information