

MIL-T-55155/30A
17 November 1978
SUPERSEDING
MIL-T-55155/30
12 March 1973
MS17122B (AS)
30 August 1971

MILITARY SPECIFICATION SHEET

**TERMINAL, STUD, DOUBLE TURRET
(NON-INSULATED, SWAGE MOUNTED)
STYLE SE-30**

This specification is approved for use by all Departments and Agencies of the Department of Defense.

The complete requirements for procuring the terminal described herein shall consist of this document and the issue in effect of Specification MIL-T-55155.

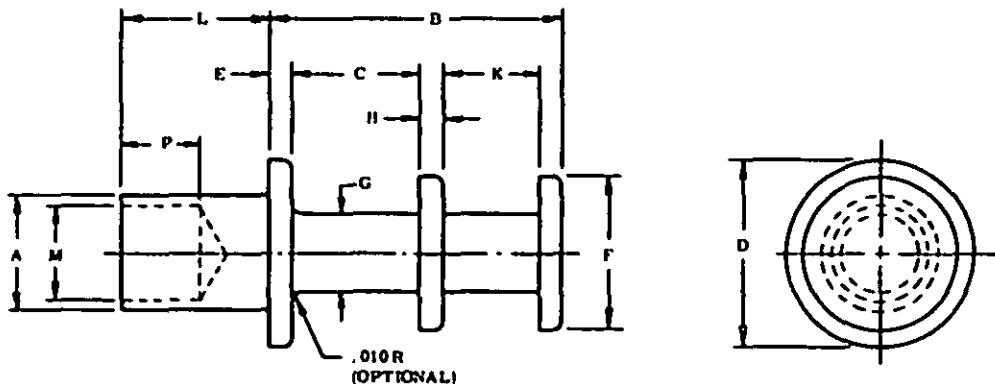


FIGURE 1

ADDITIONAL REQUIREMENTS:

Dimensions and configuration: See Figure 1 and Table I.

(A) Material: Bronze or Brass, see procurement specification.

Finish: See procurement specification.

Dimensions in inches. Dimensioning and tolerancing in accordance with USASI Y 14.5 - 1966 (ANSI).

Unless otherwise specified, remove all burrs and break all sharp edges .010 maximum, fillet radii .005 maximum.

Dimensions to be held after plating.

Part number: Consists of the letter "M", the basic number of this specification sheet and a dash number taken from Table I.

Example:

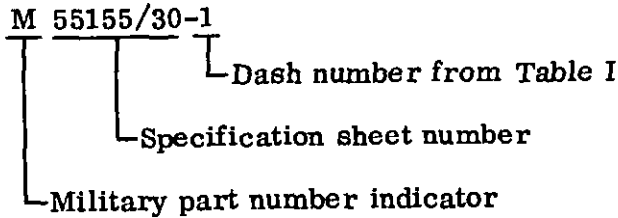


TABLE I

DASH NUMBER	THICKNESS OF MOUNTING BOARD (REF)	A : .002 DIA	B : .015 HEIGHT	C : .010	D : .005 DIA	E : .005	F : .005 DIA	G : .010 DIA	H : .005	K : .005	L : .005	M : .003 DIA	P : .003
-1	1/64	.062	.156	.064	.094	.020	.062	.031	.020	.031	.037	.046	.025
-2	1/32	.062	.156	.064	.094	.020	.062	.031	.020	.031	.053	.046	.045
-3		.090	.218	.094	.125	.023	.094	.047	.020	.062	.078	.064	.062
-4		.112	.359	.156	.187	.047	.145	.065	.031	.094	.078	.076	.093
-5	1/16	.062	.156	.064	.094	.020	.062	.031	.020	.031	.084	.046	.045
-6		.090	.218	.094	.125	.023	.094	.047	.020	.062	.109	.064	.062
-7		.112	.359	.156	.187	.047	.145	.065	.031	.094	.109	.076	.093
-8	3/32	.262	.500	.218	.312	.062	.200	.125	.031	.156	.109	.201	.062
-9		.062	.156	.064	.094	.020	.062	.031	.020	.031	.115	.046	.045
-10		.090	.218	.094	.125	.023	.094	.047	.020	.062	.140	.064	.062
-11		.112	.359	.156	.187	.047	.145	.065	.031	.094	.140	.076	.093
-12	1/8	.262	.500	.218	.312	.062	.200	.125	.031	.156	.140	.201	.062
-13		.062	.156	.064	.094	.020	.062	.031	.020	.031	.147	.046	.045
-14		.090	.218	.094	.125	.023	.094	.047	.020	.062	.171	.064	.062
-15		.112	.359	.156	.187	.047	.145	.065	.031	.094	.171	.076	.093
-16	3/16	.262	.500	.218	.312	.062	.200	.125	.031	.156	.171	.201	.062
-17		.090	.218	.094	.125	.023	.094	.047	.020	.062	.234	.064	.062
-18		.112	.359	.156	.187	.047	.145	.065	.031	.094	.234	.076	.093
-19	1/4	.262	.500	.218	.312	.062	.200	.125	.031	.156	.234	.201	.062
-20		.090	.218	.094	.125	.023	.094	.047	.020	.062	.296	.064	.062
-21		.112	.359	.156	.187	.047	.145	.065	.031	.094	.296	.076	.093
-22		.262	.500	.218	.312	.062	.200	.125	.031	.156	.296	.201	.062

NOTE: Dash Nos. 1 through 22 supersede MS17122-1 through -22.

TABLE II
METRIC CONVERSION TABLE

INCHES	MM	INCHES	MM
.020	.51	.112	2.84
.023	.59	.115	2.92
.025	.64	.125	3.18
.031	.79	.140	3.56
.037	.94	.145	3.68
.045	1.14	.147	3.73
.046	1.17	.156	3.96
.047	1.19	.171	4.34
.053	1.35	.187	4.75
.062	1.57	.200	5.08
.064	1.63	.201	5.11
.065	1.65	.218	5.54
.076	1.93	.234	5.94
.078	1.98	.262	6.66
.084	2.13	.296	7.52
.090	2.29	.312	7.92
.093	2.36	.359	9.12
.094	2.39	.500	12.70
.109	2.77		

Custodians:

Navy - AS
Air Force - 11
Army - ER

Preparing Activity:

Navy - AS
(Project No. 5940-0859)

Review Activities:

Navy - EC
Air Force - 99

User Activities:

Navy - MC, OS
Army - AR