

REV. NO.	DATE	REVISIONS	BY	APPROVED
664210V		RELEASE		
664210V	1	SEE ENGRG NOTICE R 86-37-15		
664210V	2	SEE ENGRG NOTICE R 86-477		
664210V	3	SEE ENGRG NOTICE R 86-57-14		
664210V	4	SEE ENGRG NOTICE R 86-67-2		
664210V	5	SEE ENGRG NOTICE R 86-77-2		
664210V	6	SEE ENGRG NOTICE R 86-87-2		
664210V	7	SEE ENGRG NOTICE R 86-97-2		
664210V	8	PL CHG TO -3, TOP LEVEL ASSY 1 PL CHG TO -20 UNIT		
664210V	9	PL CHG TO -20 UNIT		
664210V	10	6966015-20 WAS 6966015-2	R 87/11/9	
664210V	11	FLANGES -4 ASSY & NOTE TABLE 12-410FTG CRCTD TO 131ADDED COMM		
664210V	12	FLANGES -4 ASSY & NOTE TABLE 12-410FTG CRCTD TO 131ADDED COMM	R 86C63	
664210V	13	FLANGES -4 ASSY & NOTE TABLE 12-410FTG CRCTD TO 131ADDED COMM		
664210V	14	FLANGES -4 ASSY & NOTE TABLE 12-410FTG CRCTD TO 131ADDED COMM	R 89531	
664210V	15	PL CHG ONLY; SEE EN	R 89-7-24	
664210V	16	PL CHG ONLY; SEE EN		
664210V	17	PL CHG TO -5, SEE EN		

TABLE I [3]

THREAD SIZE	TORQUE VALUE	ITEM NO.
NO. 4(.112)-NOUNC-2B	5.0 ± 0.5 INCH-POUNDS	40
NO. 6(.138)-32UNC-2B	5.5 ± 0.5 INCH-POUNDS	37
NO. 8(.164)-32UNC-2B	19.0 ± 1.9 INCH-POUNDS	6 [8]
NO. 10(.190)-32UNF-2B	32.0 ± 3.2 INCH-POUNDS	38, 39

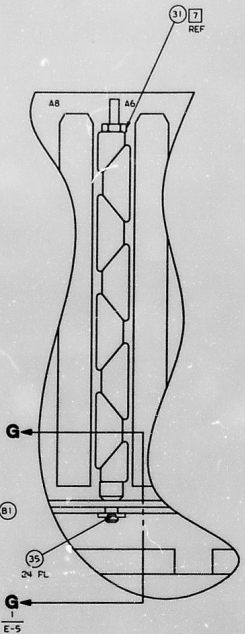
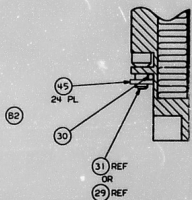


TABLE II [6]

FROM A1-	TO	COLOR
E1-1 & E1-2	FL1-E1	RED
E2-1 & E2-2	FL1-E2	RED [10]
E1-3 & E1-4	FL1-E4	VIOLET [10]
E2-3 & E2-4	FL1-E5	VIOLET



- NOTES:
- SEE SEPARATE PL VAR A
  - MARK FRONT PANEL WITH "9640ASSY" (APPROPRIATE PART NUMBER FROM TAB BLOCK) AND SERIAL NUMBER PRIOR TO ASSEMBLING IDENTIFICATION PLATE. ITEM NO. 8
  - SEE TABLE I FOR TORQUE VALUES
  - TORQUE COVER, ITEM NO'S 6 AND 7, FASTENERS TO 14.0 ± 1.4 INCH-POUNDS
  - IBM REF ONLY
  - TERMINATE WIRES PER TABLE II
  - MAINTAIN PRESSURE ON TOP SEGMENT OF WEDGELock ASSEMBLIES, ITEM NOS. 29 AND 31, WHILE TORQUING TO 9.5 ± 0.5 INCH-POUNDS
  - AFTER TORQUING ALL COVER FASTENERS PER NOTE 4, TORQUE INDICATED FASTENERS PER TABLE I
  - CONNECTOR JACKSCREWS SHALL BE TORQUED TO 3.0 ± 0.3 INCH-POUNDS
  - REMOVE AND RETAIN SCREW AND WASHER FROM FILTER TERMINALS (FL 1) E2 AND E5. INSTALL TERMINAL LUGS ON LEADS FROM PANEL ASSY, ITEM NO. 1, PER TABLE II. REASSEMBLE RETAINED HARDWARE PER VIEW FF AND TORQUE TO 5.0 ± 0.5 LBS
  - TORQUE BATTERY PACK, ITEM NO. 9, MOUNTING SCREWS TO 9.5 ± 1.0 INCH POUNDS
  - DRAWINGS FOR REFERENCE: 6966003 INSTALLATION 6966003 HARNESS TP85-387-001 TEST
  - COAT TERMINATIONS WITH ITEM 44
  - BOND LEADS FROM PANEL ASSY TO SUPPORT PLATE USING ITEM 44 APPROX. AS SHOWN
  - MARK THE FOLLOWING ON ITEM 8 IN GOTHIC LETTERING: C11 NO.-VAR C SERIAL NO.-AS APPLICABLE PART NO.-SEE TAB CONTRACT NO.-WAS 9-14000 MODEL TYPE-VAR B STOCK NO.-AS APPLICABLE DATE OF MFG-DATE ON WHICH IDENT PLATE IS APPLIED TO UNIT
  - ITEM 47 TO BE LOCATED APPROXIMATELY AS SHOWN
  - PROTECTIVE MEASURES FOR UNMATED CONNECTORS SHALL BE IAW MIL-STD-454, REQ'T 10.

PARTIAL SECTION E-E 2  
 SCALE= 2/1

PARTIAL SECTION G-G 1  
 SCALE= 2/1

PART NO.	REV LEVEL [5]	VARIABLE			
		A	B	C	VIEW J
6966000-1	G	PL6966000-1	PROTOTYPE	MC615-0025-2000	VAR D
6966000-2	G	PL6966000-2	PRE PRODUCTION	MC615-0025-3000	VAR D
6966000-3	G	PL6966000-3	PRE PRODUCTION	MC615-0025-3001	VAR D
6966000-4	G	PL6966000-4	PRE PRODUCTION	MC615-0025-3002	VAR D
6966000-5	J	PL6966000-5	PRE PRODUCTION	MC615-0025-3003	VAR D
6966000-6	J	PL6966000-6	PRE PRODUCTION	MC615-0025-3004	VAR D
6966000-20	G	PL6966000-20	PRODUCTION	MC615-0025-0200	VAR E
6966000-21	H	PL6966000-21	PRODUCTION	MC615-0025-0201	VAR E
6966000-22	J	PL6966000-22	PRODUCTION	MC615-0025-0202	VAR E
6966000-200	J	PL6966000-200	NON-FLIGHT	MC615-0025-4000	VAR E

PART NO. SEE TAB

IBM FEDERAL SYSTEMS DIVISION  
 COMPUTER, GENERAL PURPOSE (S.S.)  
 03640 6966000  
 1/71

IF "SOURCE CONTROL DRAWINGS" ONLY THE NEW RECORDS ARE NOT IDENTIFIED WITH SOURCE TO APPROVE. IF "SOURCE CONTROL DRAWINGS" ONLY THE NEW RECORDS ARE NOT IDENTIFIED WITH SOURCE TO APPROVE. IF "SOURCE CONTROL DRAWINGS" ONLY THE NEW RECORDS ARE NOT IDENTIFIED WITH SOURCE TO APPROVE.

DATE: 04-11-79  
 BY: [ ]  
 CHECKED BY: [ ]  
 APPROVED BY: [ ]

PARTS  
LIST**IBM**

FEDERAL SYSTEMS DIVISION

CONTRACT NO.

SEE DRAWING

FSCM

03640 PL 6966000

REVISION

LTR J  
DATE 17 NOV 89

LIST TITLE

COMPUTER, GENERAL PURPOSE (S.S.)

ENGINEERING NOTICE  
EN66482FD

SHEET

1 of 23

ITEM NO.	REFERENCE DESIGNATION	QUANTITY REQUIRED	UNIT MEAS.	FSCM	DRAWING OR DOCUMENT NO.	PART OR IDENTIFYING NO.	NOMENCLATURE OR DESCRIPTION	TY	PL	CH
ITEMS COMMON TO PART NUMBER 6966000-5										
001		1	01			6966015-6	PANEL ASSY, ELECTRICAL CONNECTOR			A
001		1	01			6966015-7	PANEL ASSY, ELECTRICAL CONNECTOR		K	A
002		1	01			6966005-2	CHASSIS, RH			A
003		1	01			6966006-2	CHASSIS, LH			A
004	A1	1	01			6966010-1	PANEL ASSY, FRONT			A
005		1	01			6966007-1	PLENUM ASSY, REAR			A
006		1	01			6966008-1	COVER, HEAT EXCHANGER			A
007		1	01			6966009-1	COVER ASSY, BOTTOM		K	A
007		1	01			6966009-2	COVER ASSY, BOTTOM			A
008		1	01			6966091-1	PLATE, IDENT			S
009		1	01			6966081-1	BATTERY BACKUP UNIT FOR SS AP101S		E	K
009		1	01			6966081-2	BATTERY BACKUP UNIT FOR SS AP101S		E	K
010	A2	1	01			6966020-3	PAGE ASSY, A/D			K
010	A2	1	01			6966022-4	PAGE ASSY, A/D			A
011	A3-5	3	01			6966025-1	PAGE ASSY, OCTAL NIA		E	K
011	A3-5	3	01			6966025-2	PAGE ASSY, OCTAL NIA		E	A
012	A7	1	01			6966035-1	PAGE ASSY, IB		E	K
012	A7	1	01			6966035-2	PAGE ASSY, IB		E	A
013	A6	1	01			6966030-5	PAGE ASSY, HC		E	K
013	A6	1	01			6966030-6	PAGE ASSY, HC		E	A
014	A8	1	01			6966040-5	PAGE ASSY, SI		E	K
014	A8	1	01			6966040-6	PAGE ASSY, SI		E	A
015	A12	1	01			6966045-3	PAGE ASSY, FB		E	K
015	A12	1	01			6966045-4	PAGE ASSY, FB		E	A
016	A9	1	01			6966050-3	PAGE ASSY, FT		E	K
016	A9	1	01			6966050-4	PAGE ASSY, FT		E	A
017	A13	1	01			6966055-1	PAGE ASSY, IM		E	K
017	A13	1	01			6966055-2	PAGE ASSY, IM		E	A
018	A22	1	01			6967090-1	PSV CONVERTER		E	A
019	A25	1	01			6967091-4	12V CONVERTER		E	A
020	A14	1	01			6966062-5	PAGE ASSY-CPU3		E	K

## UNIT OF MEASURE CODE

01 = PIECE EACH	31 = OUNCE (AVOZ)
11 = INCH	35 = OUNCE (TROY)
12 = FEET	41 = GRAM
18 = CUBIC FOOT	48 = CUBIC CENTIMETER
21 = METER	58 = FLUID OUNCE
28 = MILLIMETER	66 = CUBIC INCH

## SYMBOL CODE (SY):

FOR GOVERNMENT STANDARD ITEMS: E = ELECTROSTATIC SENSITIVE, H = HEAT SENSITIVE, S = SOLVENT SENSITIVE, M = MULTISENSITIVE  
 FOR OTHER ITEMS: V, E, H, S or M = VENDOR ITEM - SEE IBM CONTROL DRAWING, E, H, S or M ALSO INDICATED THESE ITEMS ARE PROCESS SENSITIVE  
 AS INDICATED ABOVE FOR "GOVERNMENT STANDARD ITEMS"

## PLANNING CODE (PL):

N = ALTERNATE ITEM P = BULK MAIL (ALL OTHER PL CODES ARE FOR IBM REF ONLY; EG, G = GOVT FURN ITEM) J = AS REQ  
 L = DO NOT FILL N = VENDOR FURN R = REF X = DO NOT GENERATE Z = DUMMY CONNECT

## CHARACTER CODE (CH):

A = WITH BILL OF MATL D = WITHOUT BILL OF MATL F = FACTORY REF

PARTS LIST	<b>IBM</b>	FEDERAL SYSTEMS DIVISION	CONTRACT NO.	FSCN	REVISION	
			SEE DRAWING	03640 PL 6966000	LTR J DATE 17NOV89	
PART TITLE COMPUTER, GENERAL PURPOSE (S.S.)					ENGINEERING NOTICE EN66482FD	SHEET 2 23

ITEM NO.	REFERENCE DESIGNATION	QUANTITY REQUIRED	UNIT MEAS.	FSCN	DRAWING OR DOCUMENT NO.	PART OR IDENTIFYING NO.	NOMENCLATURE OR DESCRIPTION	SY	PL	CH
ITEMS COMMON TO PART NUMBER 6955000-5										
020	A14	1	01			6966068-6	CIRCUIT CARD ASSY, CPU3	E		A
021	A15	1	01			6966063-5	PAGE ASSY, CPU2	E	K	A
021	A15	1	01			6966069-6	PAGE ASSY, CPU2	E		A
022	A16	1	01			6966064-1	PAGE ASSY, CPU1	E		A
023	A17	1	01			6966065-7	PAGE ASSY, INTERRUPT	E	K	A
023	A17	1	01			6966065-8	PAGE ASSY, INTERRUPT	E		A
024	A18	1	01			6966066-7	PAGE ASSY, MMU2	E	K	A
024	A18	1	01			6966066-8	PAGE ASSY, MMU2	E		A
025	A19	1	01			6966057-3	PAGE ASSY, MMU1	E	K	A
025	A19	1	01			6966067-4	PAGE ASSY, MMU1	E		A
026	A20-21	2	01			6966070-1	PAGE ASSY, CMOS	E	K	A
026	A20-21	2	01			6966070-2	PAGE ASSY, CMOS	E		A
026	A20-21	2	01			6966070-20	PAGE ASSY, CMOS	E	K	A
027		AR		81349		MIL-5-22473GR-C	COMPOUND, SEALING			P
028		AR		81349		MIL-5-22473GR-T	PRIMER, SEALING COMPOUND			P
029		6	01			6217660-1	WEDGELOCK ASSY			A
030		2	01			6195617-5	STRIP, RUBBER			A
031		18	01			6217660-2	WEDGELOCK ASSY			A
032		1	01			6966093-1	DECAL, WEIGHT WARN			D
034		12	01	96906		MS15795-806	WASHER FLAT, NO#6	V	L	D
035		24	01		MS16633	MS16633-4018	RING-RETAINING			L
037		12	01	96906	MS16995	MS16995-17	SCREW, CAP, SOCKET HEAD			L
038		8	01	96906	MS16995	MS16996-11	SCREW, CAP, SCH, SOCKET HEAD			L
039		6	01		MS16995	MS16996-12	SCREW 10-32X.750 SUC HD			L
040		2	01	96906		MS51957-13	SCREW, MACHINE-PAN HEAD			L
041		2	01	96906		MS15795-803	WASHER, FLAT, NO 4	V	L	D
042		14	01	80205		MS620C10L	WASHER, FLAT #10			L
043		2	01			MS51848-45	LOCK WASHER			L
044		RR				6052466-2	ENCAPSULANT, POLYURETHANE	V	P	D
045		24	01			6954407-1	WASHER, STEP			L
046		1	01			6135527-1	DECAL, CAUTION ESD	V		L

UNIT OF MEASURE CODE 01 = PIECE EACH    31 = OUNCE (AVDP) 11 = INCH        35 = OUNCE (TROY) 12 = FEET        41 = GRAM 18 = CUBIC FOOT   44 = CUBIC CENTIMETER 21 = METER        58 = FLUID OUNCE 28 = MILLIMETER   68 = CUBIC INCH	SYMBOL CODE (SY): FOR GOVERNMENT STANDARD ITEMS: E = ELECTROSTATIC SENSITIVE, H = HEAT SENSITIVE, S = SOLVENT SENSITIVE, M = MULTISENSITIVE FOR OTHER ITEMS: V, E, H, S, M = VENDOR ITEM - SEE IBM CONTROL DRAWING. E, H, S, M ALSO INDICATES THESE ITEMS ARE PROCESS SENSITIVE AS INDICATED ABOVE FOR "GOVERNMENT STANDARD ITEMS."
PLANNING CODE (PL): N = ALTERNATE ITEM    P = PALS MATL. (ALL OTHER PL CODES ARE FOR IBM REF ONLY; EQ, G = GOVT FURN ITEM, J = AS REQ) L = DO NOT FILL    R = VENDOR FURN    Z = REF X = DO NOT GENERATE    Z = DUMMY CONNECT	CHARACTER CODE (CH): A = WITH BILL OF MATL.    D = WITHOUT BILL OF MATL.    R = FACTORY REF



PARTS LIST	<b>IBM</b>	FEDERAL SYSTEMS DIVISION	CONTRACT NO.	FSCM	REVISION	LTR DATE	SHEET
			SEE DRAWING	035640	PL 6966000	J 17NOV89	4 OF 23
LIST TITLE						ENGINEERING NOTICE	4 OF 23
COMPUTER, GENERAL PURPOSE (S.S.)						EN66482FD	

ITEM NO.	REFERENCE DESIGNATION	QUANTITY REQUIRED	UNIT MEAS.	FSCM	DRAWING OR DOCUMENT NO.	PART OR IDENTIFYING NO.	NOMENCLATURE OR DESCRIPTION	SY	PL	CH
ITEMS COMMON TO PART NUMBER 696600-22										
001		1	01			6966015-20	PANEL ASSY, ELECTRICAL CONNECTOR			A
002		1	01			6966005-2	CHASSIS, RM			A
003		1	01			6966006-2	CHASSIS, LM			A
004	A1	1	01			6966010-2	PANEL ASSY, FRONT			A
005		1	01			6966007-1	PLENUM ASSY, REAR			A
006		1	01			6966008-1	COVER, HEAT EXCHANGER			A
007		1	1			6966009-2	COVER ASSY, BOTTOM			A
008		1	1			6966091-1	PLATE, IDENT			A
009		1	01			6966081-20	BATTERY BACKUP UNIT FOR S5 4PI015	E		A
010	A2	1	01			6966022-20	PAGE ASSY, A/D	E		A
011	A3-5	3	01			6966025-20	PAGE ASSY, OCTAL NIA	E		A
012	A7	1	01			6966035-20	PAGE ASSY, B	E		A
013	A6	1	01			6966030-20	PAGE ASSY, MC	E		A
014	A8	1	01			6966040-21	PAGE ASSY, SI	E		A
015	A12	1	01			6966045-20	PAGE ASSY, FB	E		A
016	A9	1	01			6966050-20	PAGE ASSY, FT	E		A
017	A13	1	01			6966055-20	PAGE ASSY, IM	E		A
018	A22	1	01			6967090-20	+5V CONVERTER	E		A
019	A23	1	01			6967091-21	12V CONVERTER	E		A
020	A14	1	01			6966068-21	CIRCUIT CARD ASSY, CPU3	E		A
021	A15	1	01			6966069-20	PAGE ASSY, CPU2	E		A
022	A16	1	01			6966064-20	PAGE ASSY, CPU1	E		A
023	A17	1	01			6966065-21	PAGE ASSY, INTERRUPT	E		A
024	A18	1	01			6966066-21	PAGE ASSY, MMU2	E		A
025		1	01			6966067-21	PAGE ASSY, MMU1	E		A
026	A20-21	2	01			6966070-22	PAGE ASSY, CMOS	E	K	A
026	A20-21	2	01			6966070-23	PAGE ASSY, CMOS	E		A
027		AR		81349		MIL-S-22473GR-C	COMPOUND, SEALING			P
028		AR		81349		MIL-S-22473GR-T	PRIMER, SEALING COMPOUND			P
029		6	01			6217660-1	WEDGELock ASSY			A
030		2	01			6175617-5	STRIP, RUBBER			A

<b>UNIT OF MEASURE CODE</b> 01 = PIECE EACH 11 = INCH 12 = FEET 13 = CUBIC FOOT 14 = METER 26 = MILLIMETER 31 = OUNCE (AVOZ) 35 = OUNCE (TROY) 41 = GRAM 44 = CUBIC CENTIMETER 88 = FLUID OUNCE 96 = CUBIC INCH	<b>SYMBOL CODE (SY):</b> FOR GOVERNMENT STANDARD ITEMS: E = ELECTROSTATIC SENSITIVE, H = HEAT SENSITIVE, S = SOLVENT SENSITIVE, M = MULTISENSITIVE FOR OTHER ITEMS: V, E, H, S, M = VENDOR ITEM - SEE IBM CONTROL DRAWING, E, H, S, M ALSO INDICATES THESE ITEMS ARE PROCESS SENSITIVE AS INDICATED ABOVE FOR "GOVERNMENT STANDARD ITEMS." <b>PLANNING CODE (PL):</b> K = ALTERNATE ITEM, P = BULK MATL, (ALL OTHER PL CODES ARE FOR IBM REF ONLY; EG. 6 = GOVT PURN ITEM, J = AS REQ, L = DO NOT FILL, N = VENDOR PURN, R = REF, X = DO NOT GENERATE, Z = DUMMY CONNECT) <b>CHARACTER CODE (CH):</b> A = WITH BIL OF MATL, D = WITHOUT BIL OF MATL, F = FACTORY REF
---	---

PARTS  
LIST**IBM**

FEDERAL SYSTEMS DIVISION

CONTRACT NO.

SEE DRAWING

FORM

03640 PL 6966000

REVISION

LTR J  
DATE 17 NOV 59

LIST TITLE

COMPUTER, GENERAL PURPOSE (S.S.)

ENGINEERING NOTICE  
EN66682P0

SHEET

5 OF 23

ITEM NO.	REFERENCE DESIGNATION	QUANTITY REQUIRED	UNIT MEAS.	FSCN	DRAWING OR DOCUMENT NO.	PART OR IDENTIFYING NO.	NOMENCLATURE OR DESCRIPTION	BY	PL	CHK
ITEMS COMMON TO PART NUMBER 6966000-22										
031		18	01			6217660-2	WEDGELOCK ASSY			A
032		1	01			6966093-1	DECAL, WEIGHT WARN			D
034		12	01	96705		MS15795-806	WASHER FLAT, NO#6	V	L	D
035		24	01		MS16633	MS16633-4018	RING-RETAINING			L
037		12	01	96705	MS16995	MS16995-17	SCREW, CAP, SOCKET HEAD			D
038		8	01	96705	MS16995	MS16995-11	SCREW, CAP, SCH, SOCKET HEAD			L
039		4	01		MS16995	MS16995-12	SCREW 10-32X.750 SOC HD			L
040		2	01	96706		MS51957-15	SCREW, MACHINE-PAN HEAD			L
041		2	01	96705		MS15795-803	WASHER, FLAT, NO 4	V	L	D
042		14	01	80205		MS620C10L	WASHER, FLAT #10			L
043		2	01		MS51848-45	MS51848-45	LOCK WASHER			L
044	AR				6032666-2	6032666-2	ENCAPSULANT, POLYURETHANE	V	P	D
045		24	01		6954407-1	6954407-1	WASHER, STEP			L
046		1	01		6135527-1	6135527-1	DECAL, CAUTION ESD	V	M	D
047		1	01		6086516-3	6086516-3	DECAL			D

## UNIT OF MEASURE CODE

01 = PIECE EACH	31 = OUNCE (AVOP)
11 = INCH	35 = OUNCE (TROY)
12 = FEET	41 = GRAM
18 = CUBIC FOOT	44 = CUBIC CENTIMETER
21 = METER	59 = FLUID OUNCE
28 = MILLIMETER	66 = CUBIC INCH

## SYMBOL CODE (SY):

FOR GOVERNMENT STANDARD ITEMS: E = ELECTROSTATIC SENSITIVE, H = HEAT SENSITIVE, S = SOLVENT SENSITIVE, M = MULTISENSITIVE.  
FOR OTHER ITEMS: V, E, H, S or M = VENDOR ITEM - SEE IBM CONTROL DRAWING, E, H, S or M ALSO INDICATES THESE ITEMS ARE PROCESS SENSITIVE AS INDICATED ABOVE FOR "GOVERNMENT STANDARD ITEMS"

## PLANNING CODE (PL):

K = ALTERNATE ITEM P = BULK MATL (ALL OTHER PL CODES ARE FOR IBM REF ONLY; EG, G = GOVT FURN ITEM J = AS REQ)  
L = DO NOT FILL N = VENDOR FURN R = REF X = DO NOT GENERATE Z = DUMMY CONNECT

## CHARACTER CODE (CH):

A = WITH BDL OF MATL D = WITHOUT BDL OF MATL R = FACTORY REF

PARTS  
LIST**IBM**

FEDERAL SYSTEMS DIVISION

CONTRACT NO.

SEE DRAWING

FSCN

03660 PL 6966000

REVISION

LTR J  
DATE 17 NOV 59

LIST TITLE

COMPUTER, GENERAL PURPOSE (S.S.)

ENGINEERING NOTICE  
ENG66482FD

SHEET

6 23

OF

ITEM NO.	REFERENCE DESIGNATION	QUANTITY REQUIRED	UNIT MEAS.	FSCN	DRAWING OR DOCUMENT NO.	PART OR IDENTIFYING NO.	NOMENCLATURE OR DESCRIPTION	SY	PL	CH
ITEMS COMMON TO PART NUMBER 6966000-5										
001		1	01			6966015-6	PANEL ASSY, ELECTRICAL CONNECTOR			A
001		1	01			6966015-7	PANEL ASSY, ELECTRICAL CONNECTOR		K	A
002		1	01			6966005-2	CHASSIS, RM			A
003		1	01			6966006-2	CHASSIS, LH			A
004	A1	1	01			6966010-1	PANEL ASSY, FRONT			A
005		1	01			6966007-1	PLENUM ASSY, REAR			A
006		1	01			6966008-1	COVER, HEAT EXCHANGER			A
007		1	01			6966009-1	COVER ASSY, BOTTOM		K	A
007		1	01			6966009-2	COVER ASSY, BOTTOM			A
008		1	01			6966091-1	PLATE, IDENT			S D
009		1	01			6966081-1	BATTERY BACKUP UNIT FOR SS 4P101S		E	K A
009		1	01			6966081-2	BATTERY BACKUP UNIT FOR SS 4P101S		E	K A
010	A2	1	01			6966020-3	PAGE ASSY, A/D			K A
010	A2	1	01			6966022-4	PAGE ASSY, A/D			K A
011	A3-3	3	01			6966025-1	PAGE ASSY, OCTAL MIA		E	K A
011	A3-5	3	01			6966025-2	PAGE ASSY, OCTAL MIA		E	K A
012	A7	1	01			6966035-1	PAGE ASSY, IB		E	K A
012	A7	1	01			6966035-2	PAGE ASSY, IB		E	A
013	A6	1	01			6966030-5	PAGE ASSY, MC		E	K A
013	A6	1	01			6966030-6	PAGE ASSY, MC		E	A
014	A8	1	01			6966040-5	PAGE ASSY, SI		E	K A
014	A8	1	01			6966040-6	PAGE ASSY, SI		E	A
015	A12	1	01			6966045-3	PAGE ASSY, FB		E	K A
015	A12	1	01			6966045-6	PAGE ASSY, FB		E	A
016	A9	1	01			6966050-3	PAGE ASSY, FT		E	K A
016	A9	1	01			6966050-6	PAGE ASSY, FT		E	A
017	A13	1	01			6966055-1	PAGE ASSY, IM		E	K A
017	A13	1	01			6966055-2	PAGE ASSY, IM		E	A
018	A22	1	01			6967090-1	+5V CONVERTER		E	A
019	A23	1	01			6967091-4	12V CONVERTER		E	A
020	A14	1	01			6966062-3	PAGE ASSY-CPU3		E	K A

## UNIT OF MEASURE CODE

01 = PIECE EACH	31 = OUNCE (AVOZ)
11 = INCH	35 = OUNCE (TRG)
12 = FEET	41 = GRAM
13 = CUBIC FOOT	44 = CUBIC CENTIMETER
21 = METER	55 = FLUID OUNCE
25 = MILLIMETER	58 = CUBIC INCH

## SYMBOL CODE (SY)

FOR GOVERNMENT STANDARD ITEMS: E = ELECTROSTATIC SENSITIVE, H = HEAT SENSITIVE, S = SOLVENT SENSITIVE, M = MULTI-SENSITIVE.  
FOR OTHER ITEMS: V, E, H, S, M = VENDOR ITEM - SEE IBM CONTROL DRAWING. E, H, S, M ALSO INDICATES THESE ITEMS ARE PROCESS SENSITIVE AS INDICATED ABOVE FOR "GOVERNMENT STANDARD ITEMS."

## PLANNING CODE (PL)

R = ALTERNATE ITEM P = BULK MATL. (ALL OTHER PL CODES ARE FOR IBM REF ONLY; EQ, G = GOVT FURN ITEM) J = AS REQ  
L = DO NOT FILL N = VENDOR FURN R = REF X = DO NOT GENERATE Z = DUMMY CONNECT

## CHARACTER CODE (CH)

A = WITH BML OF MATL D = WITHOUT BML OF MATL F = FACTORY DEF

PARTS LIST	<b>IBM</b>	FEDERAL SYSTEMS DIVISION	CONTRACT #	FSCM	PL 6966000	REVISION
			SEE DRAWING	03640		LTR J DATE 17 NOV 69

LIST TITLE	ENGINEERING NOTICE	SHEET
COMPUTER, GENERAL PURPOSE (S.S.)	EN66482FD	7 of 23

ITEM NO.	REFERENCE DESIGNATION	QUANTITY REQUIRED	UNIT MEAS.	FSCM	DRAWING OR DOCUMENT NO.	PART OR IDENTIFYING NO.	NOMENCLATURE OF DESCRIPTION	BY	PL	CH
ITEMS COMMON TO PART NUMBER 6966000-5										
020	A14	1	01			6966068-4	CIRCUIT CARD ASSY, CPU3	E	K	A
021	A15	1	01			6966063-5	PAGE ASSY, CPU2	E	K	A
021	A15	1	01			6966069-6	PAGE ASSY, CPU2	E	K	A
022	A16	1	01			6966066-1	PAGE ASSY, CPU1	E	K	A
023	A17	1	01			6966065-7	PAGE ASSY, INTERRUPT	E	K	A
023	A17	1	01			6966065-8	PAGE ASSY, INTERRUPT	E	K	A
024	A18	1	01			6966066-7	PAGE ASSY, MMU2	E	K	A
024	A18	1	01			6966066-8	PAGE ASSY, MMU2	E	K	A
025	A19	1	01			6966067-3	PAGE ASSY, MMU2	E	K	A
025	A19	1	01			6966067-4	PAGE ASSY, MMU1	E	K	A
026	A20-21	2	01			6966070-1	PAGE ASSY, CMOS	E	K	A
026	A20-21	2	01			6966070-2	PAGE ASSY, CMOS	E	K	A
026	A20-21	2	01			6966070-20	PAGE ASSY, CMOS	E	K	A
027		AR		81349		NIL-S-22673GR-C	COMPOUND, SEALING			P
028		AR		81349		NIL-S-22673GR-T	PRIMER, SEALING COMPOUND			P
029		6	01			6217660-1	WEDGELOCK ASSY			A
030		2	01			6195617-5	STRIP, RUBBER			A
031		18	01			6217660-2	WEDGELOCK ASSY			A
032		1	01			6966093-1	DECAL, WEIGHT MARK			S
034		12	01	96706	MS16533	MS15795-806	WASHER PLAT, NO#6	V	L	D
035		24	01		MS16995	MS16533-6018	RING-RETAINING			L
037		12	01	96706	MS16995	MS16995-17	SCREW, CAP, SOCKET HEAD			L
038		8	01	96706	MS16995	MS16996-11	SCREW, CAP, SCM, SOCKET HEAD			L
039		6	01		MS16995	MS16996-12	SCREW 10-32X.750 SOC HD			L
040		2	01	96706		MS51957-15	SCREW, MACHINE-PAN HEAD			L
041		2	01	96706		MS15795-803	WASHER, PLAT, NO 6	V	L	D
042		14	01	80203		MS620C10L	WASHER, PLAT #10			L
043		2	01			MS51848-45	LOCK WASHER			L
044		AR				6032666-2	ENCAPSULANT, POLYURETHANE	V	P	D
045		24	01			6954607-1	WASHER, STEP			L
046		1	01			6135527-1	DECAL, CAUTION ESD	V	L	D

<b>UNIT OF MEASURE CODE</b> 01 = PIECE EACH 11 = INCH 12 = FEET 13 = CUBIC FOOT 21 = METER 26 = MILLIMETER 31 = OUNCE (AVOYD) 35 = OUNCE (TROY) 41 = GRAM 44 = CUBIC CENTIMETER 59 = FLUID OUNCE 66 = CUBIC INCH	<b>SYMBOL CODE (SY):</b> FOR GOVERNMENT STANDARD ITEMS: E = ELECTROSTATIC SENSITIVE, H = HEAT SENSITIVE, S = SOLVENT SENSITIVE, M = MULTI-SENSITIVE FOR OTHER ITEMS: V, E, H, S, M = VENDOR ITEM - SEE IBM CONTROL DRAWING. E, H, S, M ALSO INDICATES THESE ITEMS ARE PROCESS SENSITIVE AS INDICATED ABOVE FOR GOVERNMENT STANDARD ITEMS.
<b>PLANNING CODE (PL):</b>	R = ALTERNATE ITEM P = BULK MATL. (ALL OTHER PL CODES ARE FOR IBM REF ONLY: EG, 8 = GOVT FURN ITEM J = AS REQ L = DO NOT FILL N = VENDOR FURN R = REF S = DO NOT GENERATE J = DUMMY CONTACT)
<b>CHARACTER CODE (CH):</b>	A = WITH BIL OF MATL D = WITHOUT BIL OF MATL S = FACTORY REF



PARTS LIST		IBM		FEDERAL SYSTEMS DIVISION		CONTRACT NO.	FSCN	PL 6966000	REVISION	LTR DATE	J 17NOV69
COMPUTER, GENERAL PURPOSE (S.S.)								ENGINEERING NOTICE EN66482FD	SHEET	9 of 23	
ITEM NO.	REFERENCE DESIGNATION	QUANTITY REQUIRED	UNIT MEAS.	FSCN	DRAWING OR DOCUMENT NO.	PART OR IDENTIFYING NO.	NOMENCLATURE OR DESCRIPTION		BY	PL	CHK
ITEMS COMMON TO PART NUMBER 695500-21											
001		1	01			6966015-20	PANEL ASSY, ELECTRICAL CONNECTOR				A
002		1	01			6966005-2	CHASSIS, RM				A
003		1	01			6966006-2	CHASSIS, LM				A
004	A1	1	01			6956010-2	PANEL ASSY, FRONT				A
005		1	01			6966007-1	PLENUM ASSY, REAR				A
006		1	01			6966008-1	COVER, HEAT EXCHANGER				A
007		1	01			6966009-2	COVER ASSY, BOTTOM				A
008		1	01			6966091-1	PLATE, IDENT				D
009		1	01			6966081-20	BATTERY BACKUP UNIT FOR SS 4PI01S		E		A
010	A2	1	01			6966022-20	PAGE ASSY, A/D		E		A
011	A3-5	3	01			6966023-20	PAGE ASSY, OCTAL MIA		E		A
012	A7	1	01			6966035-20	PAGE ASSY, IB		E		A
013	A6	1	01			6966030-20	PAGE ASSY, MC		E		A
014	A8	1	01			6966040-21	PAGE ASSY, SI		E		A
015	A12	1	01			6966045-20	PAGE ASSY, FB		E		A
016	A9	1	01			6966050-20	PAGE ASSY, FT		E		A
017	A13	1	01			6966055-20	PAGE ASSY, IM		E		A
018	A22	1	01			6967090-20	+5V CONVERTER		E		A
019	A23	1	01			6967091-21	12V CONVERTER		E		A
020	A14	1	01			6966068-20	CIRCUIT CARD ASSY, CPU3		E		A
021	A15	1	01			6966069-20	PAGE ASSY, CPU2		E		A
022	A16	1	01			6966064-20	PAGE ASSY, CPU1		E		A
023	A17	1	01			6966065-21	PAGE ASSY, INTERRUPT		E		A
024	A18	1	01			6966066-21	PAGE ASSY, MMU2		E		A
025		1	01			6966067-21	PAGE ASSY, MMU1		E		A
026	A20-21	2	01			6966070-20	PAGE ASSY, CMOS		E	K	A
026	A20-21	2	01			6966070-22	PAGE ASSY, CMOS		E	K	A
026	A20-21	2	01			6966070-23	PAGE ASSY, CMOS		E		A
027		AR		81349		MIL-S-22473GR-C	COMPOUND, SEALING				P
028		AR		81349		MIL-S-22473GR-T	PRIMER, SEALING COMPOUND				P
029		6	01			6217660-1	WEDGELOCK ASSY				A
UNIT OF MEASURE CODE		SYMBOL CODE (S):									
01 = PIECE EACH	31 = OUNCE (AVOZ)	FOR GOVERNMENT STANDARD ITEMS: E = ELECTROSTATIC SENSITIVE, H = HEAT SENSITIVE, S = SOLVENT SENSITIVE, M = MULTISENSITIVE.									
11 = INCH	35 = OUNCE (TROY)	FOR OTHER ITEMS: V, E, H, S or M = VENDOR ITEM - SEE IBM CONTROL DRAWING. E, H, S or M ALSO INDICATED THESE ITEMS ARE PROCESS SENSITIVE AS INDICATED ABOVE FOR "GOVERNMENT" STANDARD ITEMS.									
12 = FEET	41 = GRAM	PLANNING CODE (PL):									
18 = CUBIC FOOT	44 = CUBIC CENTIMETER	N = ALTERNATE ITEM P = BY AIR MAIL (ALL OTHER PL CODES ARE FOR IBM REF ONLY; EG, G = GOVT FURN ITEM I = AS REQ									
21 = METER	59 = FLUID OUNCE	L = DO NOT FILL H = VENDOR FURN R = REF X = DO NOT GENERATE Z = DUMBY CONNECT)									
26 = MILLIMETER	65 = CUBIC INCH	CHARACTER CODE (CC): A = WITH BBL OF MATL D = WITHOUT BBL OF MATL R = FACTORY REF									

PARTS  
LIST**IBM**

FEDERAL SYSTEMS DIVISION

CONTRACT NO.

SEE DRAWING

FSCM

03640 PL 6966000

REVISION

LTR J  
DATE 17NOV89

LAST TITLE

COMPUTER, GENERAL PURPOSE (S.S.)

ENGINEERING NOTICE  
EN66482FDSHEET  
10 OF 23

ITEM NO.	REFERENCE DESIGNATION	QUANTITY REQUIRED	UNIT MEAS	FSCM	DRAWING OR DOCUMENT NO.	PART OR IDENTIFYING NO.	NOMENCLATURE OR DESCRIPTION	SY	PL	CH
ITEMS COMMON TO PART	NUMBER 696600-21									
030		2	01			6195617-5	STRIP, RUBBER			D
031		18	01			6217660-2	WEDGELock ASSY			A
032		1	01			6966093-1	DECAL, WEIGHT WARN			D
034		12	01	76905		MS15795-805	WASHER FLAT, NO#6	V	L	D
035		24	01		MS16633	MS16633-4018	RING-RETAINING		L	D
037		12	01	96905	MS16995	MS16995-17	SCREW, CAP, SOCKET HEAD			D
038		8	01	96906	MS16995	MS16996-11	SCREW, CAP, SCH, SOCKET HEAD			L
039		6	01		MS16995	MS16996-12	SCREW 10-32X.750 SOC HD			L
040		2	01	96905		MS15795-15	SCREW, MACHINE-PAN HEAD			D
041		2	01	96906		MS15795-803	WASHER, FLAT, NO 4	V	L	D
042		14	01	80205		MS5620C10L	WASHER, FLAT #10			L
043		2	01			MS51848-65	LOCK WASHER			L
044		AR				6032466-2	ENCAPSULANT, POLYURETHANE	V	P	D
045		24	01			6954607-1	WASHER, STEP			L
046		1	01			6135527-1	DECAL, CAUTION ESD	V		D
047		1	01			6086516-3	DECAL			H

## UNIT OF MEASURE CODE

01 = PIECE EACH	31 = OUNCE (AVOZ)
11 = INCH	38 = OUNCE (TROY)
12 = FEET	41 = GRAM
18 = CUBIC FOOT	44 = CUBIC CENTIMETER
21 = METER	58 = FLUID OUNCE
26 = MILLIMETER	66 = CUBIC INCH

## SYMBOL CODE (SY)

FOR GOVERNMENT STANDARD ITEMS: E = ELECTROSTATIC SENSITIVE, H = HEAT SENSITIVE, S = SOLVENT SENSITIVE, M = MULTISENSITIVE  
 FOR OTHER ITEMS: V, E, H, S, M = VENDOR ITEM - SEE IBM CONTROL DRAWING, E, H, S, M ALSO INDICATES THESE ITEMS ARE PROCESS SENSITIVE  
 AS INDICATED ABOVE FOR "COVERHEAT" STANDARDS ITEMS.

## PLANNING CODE (PL)

R = ALTERNATE ITEM P = BULK MATL (ALL OTHER PL CODES ARE FOR IBM REF ONLY; EG, G = GOVT FURN ITEM J = AS REQ  
 L = DO NOT FILL R = VENDOR FURN R = REF X = DO NOT GENERATE Z = DUMMY CONNECT)

## CHARACTER CODE (CH)

A = WITH BGL OF MATL B = WITHOUT BGL OF MATL R = FACTORY REF

PARTS LIST		IBM FEDERAL SYSTEMS DIVISION		CONTRACT NO.	FSCM	PL 6966000	REVISION			
SEE DRAWING						03640	J 17 NOV 59			
COMPUTER, GENERAL PURPOSE (S.S.)							ENGINEERING NOTICE EN66482FD	SHEET 11 OF 23		
ITEM NO.	REFERENCE DESIGNATOR	QUANTITY REQUIRED	UNIT MEAS.	FSCM	DRAWING OR DOCUMENT NO.	PART OR IDENTIFYING NO.	NOMENCLATURE OR DESCRIPTION	SY	PL	CH
ITEMS COMMON TO PART NUMBER 6955000-6										
001		1	01			6966015-6	PANEL ASSY, ELECTRICAL CONNECTOR			A
001		1	01			6966015-7	PANEL ASSY, ELECTRICAL CONNECTOR		K	A
002		1	01			6966005-2	CHASSIS, RH			A
003		1	01			6966006-2	CHASSIS, LH			A
004	A1	1	01			6966010-1	PANEL ASSY, FRONT			A
005		1	01			6966007-1	PLENUM ASSY, REAR			A
006		1	01			6966008-1	COVER, HEAT EXCHANGER			A
007		1	01			6966009-1	COVER ASSY, BOTTOM		K	A
007		1	01			6966009-2	COVER ASSY, BOTTOM			A
008		1	01			6966091-1	PLATE, IDENT		S	D
009		1	01			6966031-1	BATTERY BACKUP UNIT FOR SS AP101S		E	K
009		1	01			6966081-2	BATTERY BACKUP UNIT FOR SS AP101S		E	K
010	A2	1	01			6966020-3	PAGE ASSY, A/D		E	K
010	A2	1	01			6966022-4	PAGE ASSY, A/D		E	K
011	A3-5	3	01			6966025-1	PAGE ASSY, OCTAL 71A		E	K
011	A3-5	3	01			6966025-2	PAGE ASSY, OCTAL 71A		E	K
012	A7	1	01			6966035-1	PAGE ASSY, I8		E	K
012	A7	1	01			6966035-2	PAGE ASSY, I8		E	K
013	A6	1	01			6966030-3	PAGE ASSY, MC		E	K
013	A6	1	01			6966030-6	PAGE ASSY, MC		E	K
014	A8	1	01			6966040-3	PAGE ASSY, SI		E	K
014	A8	1	01			6966040-4	PAGE ASSY, SI		E	K
015	A12	1	01			6966045-3	PAGE ASSY, FB		E	K
015	A12	1	01			6966045-4	PAGE ASSY, FB		E	K
016	A9	1	01			6966050-3	PAGE ASSY, FT		E	K
016	A9	1	01			6966050-4	PAGE ASSY, FT		E	K
017	A13	1	01			6966055-1	PAGE ASSY, IM		E	K
017	A13	1	01			6966055-2	PAGE ASSY, IM		E	K
018	A22	1	01			6967090-1	+5V CONVERTER		E	K
019	A23	1	01			6967091-3	12V CONVERTER		E	K
020	A14	1	01			6966062-3	PAGE ASSY-CPU3		E	K
UNIT OF MEASURE CODE				SYMBOL CODE (SY):						
01 = PIECE EACH	31 = OUNCE (AVDP)	FOR GOVERNMENT STANDARD ITEMS: E = ELECTROSTATIC SENSITIVE, H = HEAT SENSITIVE, S = SOLVENT SENSITIVE, M = MULTI-SENSITIVE.								
11 = INCH	39 = OUNCE (TROY)	FOR OTHER ITEMS: V, E, H, S, M = VENDOR ITEM - SEE IBM CONTROL DRAWING. E, H, S, M ALSO INDICATES THESE ITEMS ARE PROCESS SENSITIVE AS INDICATED ABOVE FOR "GOVERNMENT STANDARD ITEMS."								
12 = FEET	41 = GRAM	PLANNING CODE (PL):								
13 = CUBIC FOOT	44 = CUBIC CENTIMETER	H = ALTERNATE ITEM, P = BULK MATL, (ALL OTHER PL CODES ARE FOR IBM REF ONLY); ES, S = GOVT FURN ITEM, I = AS REQD								
21 = METER	58 = FLUID OUNCE	L = DO NOT FILL, N = VENDOR PURN, R = REF S = DO NOT GENERATE, Z = GUMMY CONNECT								
26 = MILLIMETER	66 = CUBIC INCH	CHARACTER CODE (CH): A = WITH B/L OF MATL, B = WITHOUT B/L OF MATL, C = FACTORY REF								

PARTS LIST	<b>IBM</b>	FEDERAL SYSTEMS DIVISION	CONTRACT NO.	SEE DRAWING	FSCM	03640 PL 6966000	REVISION	
							LTR J	
LIST TITLE							ENGINEERING NOTICE	SHEET
COMPUTER, GENERAL PURPOSE (S.S.)							EN666482FD	12 OF 23

ITEM NO.	REFERENCE DESIGNATION	QUANTITY REQUIRED	UNIT MEAS.	FSCM	DRAWING OR DOCUMENT NO.	PART OR IDENTIFYING NO.	NOMENCLATURE OR DESCRIPTION	BY	PL	CH
ITEMS COMMON TO PART NUMBER 695500-4										
020	A14	1	01			6966068-4	CIRCUIT CARD ASSY, CPU3	E		A
021	A15	1	01			6966063-5	PAGE ASSY, CPJ2	E	K	A
021	A15	1	01			6966069-6	PAGE ASSY, CPU2	E		A
022	A16	1	01			6966064-1	PAGE ASSY, CPU1	E		A
023	A17	1	01			6966065-5	PAGE ASSY, INTERRUPT	E	K	A
023	A17	1	01			6966065-6	PAGE ASSY, INTERRUPT	E	K	A
024	A18	1	01			6966066-5	PAGE ASSY, MMU2	E	K	A
024	A18		01			6966066-6	PAGE ASSY, MMU2	E		A
025	A19	1	01			6966067-3	PAGE ASSY, MMU1	E	K	A
025	A19	1	01			6966067-4	PAGE ASSY, MMU1	E		A
026	A20-21	2	01			6966070-1	PAGE ASSY, CMOS	E	K	A
026	A20-21	2	01			6966070-2	PAGE ASSY, CMOS	E		A
027		AR		81549		MIL-S-22473GR-C	COMPOUND, SEALING			P
028		AR		81549		MIL-S-22473GR-T	PRIMER, SEALING COMPOUND			P
029		6	01			6217660-1	WEDGELOCK ASSY			A
030		2	01			6195617-5	STRIP, RUBBER			A
031		18	01			6217660-2	WEDGELOCK ASSY			A
032		1	01			6966093-1	DECAL, WEIGHT WARN			A
034		12	01	96706		MS15795-805	WASHER, FLAT, NO 5	V	L	D
035		24	01	96706	MS16633	MS16633-4018	RING-RETAINING	V	L	D
037		12	01	96706	MS16995	MS16995-17	SCREW, CAP, SOCKET HEAD			L
038		8	01	96706	MS16995	MS16995-11	SCREW, CAP, SCH, SOCKET HEAD			L
039		6	01	96706	MS16995	MS16995-12	SCREW 10-32X.750 SOC HD			L
040		2	01	96706		MS11957-13	SCREW, MACHINE-PAN HEAD			L
041		2	01	96706		MS15795-805	WASHER, FLAT, NO 4	V	L	D
042		14	01	80203		MS620C10L	WASHER, FLAT #10			L
043		2	01			MS1848-65	LOCK WASHER			L
044		AR				6032466-2	ENCAPSULANT, POLYURETHANE			P
045		24	01			6954407-1	WASHER, STEP			L
046		1	01			6135527-1	DECAL, CAUTION ESD			L
047		1	01			6086516-3	DECAL	V	M	D

## UNIT OF MEASURE CODE

01 = PIECE EACH	31 = OUNCE (AVDP)
11 = INCH	35 = OUNCE (TROY)
12 = FEET	41 = GRAM
18 = CUBIC FOOT	44 = CUBIC CENTIMETER
21 = METER	58 = FLUID OUNCE
26 = MILLIMETER	66 = CUBIC INCH

## SYMBOL CODE (SY):

FOR GOVERNMENT STANDARD ITEMS: E = ELECTROSTATIC SENSITIVE, H = HEAT SENSITIVE, S = SOLVENT SENSITIVE or M = MULTI-SENSITIVE.  
FOR OTHER ITEMS: V, E, H, S, M = VENDOR ITEM - SEE IBM CONTROL DRAWING. E, H, S, M ALSO INDICATES THESE ITEMS ARE PROCESS SENSITIVE AS INDICATED ABOVE FOR "GOVERNMENT STANDARD ITEMS."

## PLANNING CODE (PL):

H = ALTERNATE ITEM P = BULK MAIL (ALL OTHER PL CODES ARE FOR IBM REF ONLY); EG, B = GOVT FURN ITEM J = AS REQ  
L = DO NOT FILL N = VENDOR FURN R = REF X = DO NOT GENERATE Z = DUMMY CONNECT

## CHARACTER CODE (CH):

A = WITH BIL OF MAT, B = WITHOUT BIL OF MAT, R = FACTORY REF

PARTS LIST		IBM		FEDERAL SYSTEMS DIVISION		CONTRACT NO.	FSCM	PL 6966000	REVISION		
SEE DRAWINGS						03640	PL 6966000	LTR DATE	J 17 NOV 59		
LAST TITLE								ENGINEERING NOTICE	SHEET		
COMPUTER, GENERAL PURPOSE (S.S.)								EN66422FD	13 OF 23		
ITEM NO.	REFERENCE DESIGNATION	QUANTITY REQUIRED	UNIT MEAS.	FSCM	DRAWING OR DOCUMENT NO.	PART OR IDENTIFYING NO.	NOMENCLATURE OR DESCRIPTION	BY	FL	CH	
ITEMS COMMON TO PART NUMBER 6966000-3											
001		1	01			6966015-6	PANEL ASSY, ELECTRICAL CONNECTOR			A	
001		1	01			6966015-5	PANEL ASSY, ELECTRICAL CONNECTOR		K	A	
002		1	01			6966005-2	CHASSIS, RM			A	
003		1	01			6966006-2	CHASSIS, LM			A	
004	A1	1	01			6966010-1	PANEL ASSY, FRONT			A	
005		1	01			6966007-1	PLENUM ASSY, REAR			A	
006		1	01			6966008-1	COVER, HEAT EXCHANGER			C	
007		1	01			6966009-1	COVER ASSY, BOTTOM		K	A	
007		1	01			6966009-2	COVER ASSY, BOTTOM			A	
008		1	01			6966091-1	PLATE, IDENT			S	
009		1	01			6966081-1	BATTERY BACKUP UNIT FOR SS AP101S		E	K	
009		1	01			6966081-2	BATTERY BACKUP UNIT FOR SS AP101S			A	
010	A2	1	01			6966020-3	PAGE ASSY, A/D			K	
010	A2	1	01			6966022-4	PAGE ASSY, A/D			A	
011	A3-5	3	01			6966025-1	PAGE ASSY, OCTAL NIA		E	K	
011	A3-5	3	01			6966025-2	PAGE ASSY, OCTAL NIA			A	
012	A7	1	01			6966035-1	PAGE ASSY, IB		E	K	
012	A7	1	01			6966035-2	PAGE ASSY, IB			A	
013	A6	1	01			6966030-3	PAGE ASSY, MC		E	K	
013	A6	1	01			6966030-4	PAGE ASSY, MC			A	
014	A8	1	01			6966040-3	PAGE ASSY, SI		E	K	
014	A8	1	01			6966040-4	PAGE ASSY, SI			A	
015	A12	1	01			6966045-1	PAGE ASSY, FB		E	K	
015	A12	1	01			6966045-2	PAGE ASSY, FB			A	
016	A9	1	01			6966050-1	PAGE ASSY, FT		E	K	
016	A9	1	01			6966050-2	PAGE ASSY, FT			A	
017	A13	1	01			6966055-1	PAGE ASSY, IN		E	K	
017	A13	1	01			6966055-2	PAGE ASSY, IN			A	
018	A22	1	01			6967090-1	+5V CONVERTER		E	A	
019	A23	1	01			6967091-1	12V CONVERTER		E	K	
019	A23	1	01			6967091-2	12V CONVERTER			A	
UNIT OF MEASURE CODE				SYMBOL CODE (S):							
01 = PIECE EACH	31 = OUNCE (AVDP)	FOR GOVERNMENT STANDARD ITEMS: E = ELECTROSTATIC SENSITIVE, H = HEAT SENSITIVE, S = SOLVENT SENSITIVE, M = MULTISENSITIVE									
11 = INCH	35 = OUNCE (TROY)	FOR OTHER ITEMS: V, E, H, S, or M = VENDOR ITEM - SEE IBM CONTROL DRAWING, E, H, S, or M ALSO INDICATES THESE ITEMS ARE PROCESS SENSITIVE									
12 = FEET	41 = GRAM	AS INDICATED ABOVE FOR "GOVERNMENT STANDARD ITEMS"									
18 = CUBIC FOOT	44 = CUBIC CENTIMETER	PLANNING CODE (PL):				K = ALTERNATE ITEM, P = BULK MATL, ALL OTHER PL CODES ARE FOR IBM REF ONLY. EG. B = GOVT PURC. ITEM, J = AS REQ					
21 = METER	58 = FLUID OUNCE					L = DO NOT FILL, N = VENDOR FURN, R = REF X = DO NOT GENERALIZE, Z = DUMMY CONNECT					
28 = MILLIMETER	68 = CUBIC INCH	CHARACTER CODE (CH):				A = WITH BRL OF MATL, D = WITHOUT BRL OF MATL, R = FACTORY REF					

PARTS LIST

IBM

FEDERAL SYSTEMS DIVISION

CONTRACT NO.

SEE DRAWING

FSCN

03640 PL 6966000

REVISION

LTR J  
DATE 17 NOV 69

LIST TITLE

COMPUTER, GENERAL PURPOSE (S.S.)

ENGINEERING NOTICE  
EN66492FD

SHEET

14 OF 23

ITEM NO.	REFERENCE DESIGNATION	QUANTITY REQUIRED	UNIT MEAS.	FSCN	DRAWING OR DOCUMENT NO.	PART OR IDENTIFYING NO.	NOMENCLATURE OR DESCRIPTION	SY	PL	CH
ITEMS COMMON TO PART NUMBER 6966000-3										
020	A14	1	01			6966062-3	PAGE ASSY-CPU3		K	A
020	A14	1	01			6966068-4	CIRCUIT CARD ASSY, CPU3	E		A
021	A15	1	01			6966063-3	PAGE ASSY, CPU2	E	K	A
021	A15	1	01			6966069-4	PAGE ASSY, CPU2			A
022	A16	1	01			6966064-1	PAGE ASSY, CPU1	E		A
023	A17	1	01			6966065-3	PAGE ASSY, INTERRUPT	E	K	A
023	A17	1	01			6966065-4	PAGE ASSY, INTERRUPT	E		A
024	A18	1	01			6966066-3	PAGE ASSY, MMU2	E	K	A
024	A18	1	01			6966066-4	PAGE ASSY, MMU2	E		A
025	A19	1	01			6966067-1	PAGE ASSY, MMU1	E	K	A
025	A19	1	01			6966067-2	PAGE ASSY, MMU1	E		A
026	A20-21	2	01			6966070-1	PAGE ASSY, CMOS	E	K	A
026	A20-21	2	01			6966070-2	PAGE ASSY, CMOS	E		A
027		AR		81549		NIL-S-22473GR-C	COMPOUND, SEALING		P	D
028		AR		81549		NIL-S-22473GR-T	PRIMER, SEALING COMPOUND		P	D
029		6	01			6217660-1	WEDGELOCK ASSY		A	A
030		2	01			6195617-5	STRIP, RUBBER		A	D
031		18	01			6217660-2	WEDGELOCK ASSY		A	A
032		1	01			6966093-1	DECAL, WEIGHT MARK			D
034		12	01	96906		MS15795-806	WASHER FLAT, NO86	V	L	D
035		24	01		MS16633	MS16633-4018	RING-RETAINING		L	D
037		12	01	96906	MS16995	MS16995-17	SCREW, CAP, SOCKET HEAD		L	D
038		8	01	96906	MS16995	MS16996-11	SCREW, CAP, SCH, SOCKET HEAD		L	D
039		6	01		MS16995	MS16996-12	SCREW IO-32X.750 SOC HD		L	D
040		2	01	96906		MS15795-15	SCREW, MACHINE-PAN HEAD		L	D
041		2	01	96906		MS15795-803	WASHER, FLAT, NO 4	V	L	D
042		14	01	80205		MS620C10L	WASHER, FLAT #10		L	D
043		2	01			MS1848-45	LOCK WASHER		L	D
044		AR				6032466-2	ENCAPSULANT, POLYURETHANE		V	P
045		24	01			6954407-1	WASHER, STEP		L	D
046		1	01			6132527-1	DECAL, CAUTION ESD		V	D

## UNIT OF MEASURE CODE

01 = PIECE EACH  
11 = INCH  
12 = FEET  
13 = CUBIC FOOT  
21 = METER  
22 = MILLIMETER  
31 = OUNCE (AVOIP)  
32 = OUNCE (TROY)  
41 = GRAM  
44 = CUBIC CENTIMETER  
51 = FLUID OUNCE  
52 = CUBIC INCH

## SYMBOL CODE (S)

FOR GOVERNMENT STANDARD ITEMS: E = ELECTROSTATIC SENSITIVE, M = HEAT SENSITIVE, S = SOLVENT SENSITIVE, N = MULTISENSITIVE.  
FOR OTHER ITEMS: V, E, H, S, M = VENDOR ITEM - SEE IBM CONTROL DRAWING. E, H, S, M ALSO INDICATES THESE ITEMS ARE PROCESS SENSITIVE AS INDICATED ABOVE FOR "GOVERNMENT STANDARD ITEMS."

## PLANNING CODE (PL)

R = ALTERNATE ITEM P = BULK MATL (ALL OTHER PL CODES ARE FOR IBM REF ONLY); EQ, B = GOVT FURN ITEM J = AS REQ  
L = DO NOT FILL N = VENDOR FURN R = REF X = DO NOT GENERATE Z = DUMMY CONNECT

## CHARACTER CODE (CH)

A = WITH BALL OF MATL D = WITHOUT BALL OF MATL R = FACTORY REF

PARTS  
LIST**IBM**

FEDERAL SYSTEMS DIVISION

CONTRACT NO.

SEE DRAWING

FSCN

03640

PL 6966000

REVISION

LTR

DATE

J

17 NOV 59

LAT TITLE

COMPUTER, GENERAL PURPOSE (S.S.)

ENGINEERING NOTICE  
EN66482FD

SHEET

15 OF 23

ITEM NO.	REFERENCE DESIGNATION	QUANTITY REQUIRED	UNIT MEAS.	FSCN	DRAWING OR DOCUMENT NO.	PART OR IDENTIFYING NO.	NOMENCLATURE OR DESCRIPTION	BT	PL	CH
ITEMS COMMON TO PART NUMBER 6966000-3 347		1	01			6086516-3	DECAL	H		D

## UNIT OF MEASURE CODE

01 = PIECE EACH	31 = OUNCE (AVOZ)
11 = INCH	39 = OUNCE (TROY)
12 = FEET	41 = GRAM
18 = CUBIC FOOT	44 = CUBIC CENTIMETER
21 = METER	59 = FLUID OUNCE
26 = MILLIMETER	66 = CUBIC INCH

## SYMBOL CODE (SY)

FOR GOVERNMENT STANDARD ITEMS: E = ELECTROSTATIC SENSITIVE, H = HEAT SENSITIVE, S = SOLVENT SENSITIVE or M = MULTISENSITIVE  
FOR OTHER ITEMS: V, E, K, S or M = VENDOR ITEM - SEE IBM CONTROL DRAWING, E, H, S or M ALSO INDICATED THESE ITEMS ARE PROCESS SENSITIVE  
AS INDICATED ABOVE FOR "GOVERNMENT STANDARD ITEMS."

## PLANNING CODE (PL)

N = ALTERNATE ITEM P = BULK MATL. (ALL OTHER PL CODES ARE FOR IBM REF ONLY; EG, 8 = GOVT FURN ITEM 1 = AS REQD  
L = DO NOT FALL N = VENDOR FURN R = REF S = DO NOT GENERATE Z = DUMMY CONNECT)

## CHARACTER CODE (CH)

A = WITH BILL OF MATL. D = WITHOUT BILL OF MATL. F = FACTORY REF

PARTS LIST		IBM		FEDERAL SYSTEMS DIVISION		CONTRACT NO.	FSCM	PL 6966000	VISION		
						SEE DRAWING	35640	PL 6966000	LTR J DATE 17 NOV 89		
LIST TITLE								ENGINEERING NOTICE EN66682PD	SHEET 16 OF 23		
COMPUTER, GENERAL PURPOSE (S.S.)											
ITEM NO.	REFERENCE DESIGNATION	QUANTITY REQUIRED	UNIT MEAS.	FSCM	DRAWING OR DOCUMENT NO.	PART OR IDENTIFYING NO.	NOMENCLATURE OR DESCRIPTION		BY	PL	CH
ITEMS COMMON TO PART NUMBER 6966000-20											
001		1	01			6966015-20	PANEL ASSY, ELECTRICAL CONNECTOR				A
002		1	01			6966005-2	CHASSIS, RM				A
003		1	01			6966006-2	CHASSIS, LM				A
004	A1	1	01			6966010-2	PANEL ASSY, FRONT				A
005		1	01			6966007-1	PLENUM ASSY, REAR				A
006		1	01			6966008-1	COVER, HEAT EXCHANGER				A
007		1	01			6966009-2	COVER ASSY, BOTTOM				A
008		1	01			6966091-1	PLATE, IDENT				D
009		1	01			6966081-20	BATTERY BACKUP UNIT FOR 55 APIO15		E		A
010	A2	1	01			6966022-20	PAGE ASSY, A/D		E		A
011	A3-5	3	01			6966025-20	PAGE ASSY, OCTAL MIA		E		A
012	A7	1	01			6966035-20	PAGE ASSY, IB		E		A
013	A6	1	01			6966030-20	PAGE ASSY, MC		E		A
014	A8	1	01			6966040-20	PAGE ASSY, SI		E		A
015	A12	1	01			6966045-20	PAGE ASSY, FB		E		A
016	A9	1	01			6966050-20	PAGE ASSY, FT		E		A
017	A13	1	01			6966055-20	PAGE ASSY, IN		E		A
018	A22	1	01			6967090-20	+5V CONVERTER		E		A
019	A23	1	01			6967091-20	12V CONVERTER		E		A
020	A14	1	01			6966068-20	CIRCUIT CARD ASSY, CPU3		E		A
021	A15	1	01			6966069-20	PAGE ASSY, CPU2		E		A
022	A16	1	01			6966064-20	PAGE ASSY, CPU1		E		A
023	A17	1	01			6966065-20	PAGE ASSY, INTERRUPT		E		A
024	A18	1	01			6966066-20	PAGE ASSY, MMU2		E		A
025	A19	1	01			6966067-20	PAGE ASSY, MMU1		E	K	A
025		1	01			6966067-21	PAGE ASSY, MMU1		E		A
026	A20-21	2	01			6966070-20	PAGE ASSY, CMOS		E	K	A
026	A20-21	2	01			6966070-22	PAGE ASSY, CMOS		E	K	A
026	A20-21	2	01			6966070-23	PAGE ASSY, CMOS		E		A
027	AR			81349		MIL-S-22473GR-C	COMPOUND, SEALING		E		P
028	AR			81349		MIL-S-22473GR-T	PRIMER, SEALING COMPOUND		E		D
UNIT OF MEASURE CODE				SYMBOL CODE (SY):							
01 = PIECE EACH	31 = OUNCE (AVDP)	FOR GOVERNMENT STANDARD ITEMS: E = ELECTROSTATIC SENSITIVE, H = HEAT SENSITIVE, S = SOLVENT SENSITIVE, M = MULTI-SENSITIVE									
11 = INCH	38 = OUNCE (TROY)	FOR OTHER ITEMS, V, E, H, S or M = VENDOR ITEM - SEE GOVT CONTROL DRAWING, E, H, S or M ALSO INDICATES THESE ITEMS ARE PROCESS SENSITIVE									
12 = FEET	41 = GRAM	AS INDICATED ABOVE FOR "GOVERNMENT STANDARD ITEMS."									
18 = CUBIC FOOT	44 = CUBIC CENTIMETER	PLANNING CODE (PL):				K = ALTERNATE ITEM P = BULK MATL. (ALL OTHER PL CODES ARE FOR IBM REF ONLY; EG, B = GOVT FURN ITEM I = AS REQ					
21 = METER	59 = FLUID OUNCE	L = DO NOT FALL N = VENDOR FURN B = REF X = DO NOT EXEMPT E = QUARRY CONNECT									
26 = MILLIMETER	96 = CUBIC INCH	CHARACTER CODE (CH):				A = WITH BIL OF MATL D = WITHOUT BIL OF MATL R = FACTORY REF					

PARTS LIST

IBM

FEDERAL SYSTEMS DIVISION

CONTRACT NO.

SEE DRAWING

FSCM

03640 PL 6966000

REVISION

LTR J  
DATE 17 NOV 69

LAST TITLE

COMPUTER, GENERAL PURPOSE (S.S.)

ENGINEERING NOTICE  
EN66482FDSHEET  
17 of 23

ITEM NO.	REFERENCE DESIGNATION	QUANTITY REQUIRED	UNIT MEAS.	FSCM	DRAWING OR DOCUMENT NO.	PART OR IDENTIFYING NO.	NOMENCLATURE OR DESCRIPTION	BY	PL	CH
ITEMS COMMON TO PART NUMBER 6966000-20										
029		6	01			6217660-1	WEDGELOCK ASSY			A
030		2	01			6195617-5	STRIP, RUBBER			D
031		18	01			6217660-2	WEDGELOCK ASSY			A
032		1	01			6966093-1	DECAL, HEIGHT MARK			D
034		12	01	96706		MS15795-806	WASHER FLAT, #06	V	L	D
035		24	01		MS16633	MS16633-6918	RING-RETAINING		L	D
037		12	01	96706	MS16995	MS16995-17	SCREW, CAP, SOCKET HEAD			D
038		8	01	96706	MS16995	MS16995-11	SCREW, CAP, SCH, SOCKET HEAD			D
039		6	01		MS16995	MS16995-12	SCREW 10-32X.750 SOC HD		L	D
040		2	01	96706		MS51957-15	SCREW, MACHINE-PAN HEAD		L	D
041		2	01	96706		MS15795-503	WASHER, FLAT, NO 4	V	L	D
042		14	01	80205		NAS620C10L	WASHER, FLAT #10		L	D
043		2	01			MS51848-65	LOCK WASHER		L	D
044		AR				6032466-2	ENCAPSULANT, POLYURETHANE	V	P	D
045		24	01			6954407-1	WASHER, STEP		L	D
046		1	01			6135527-1	DECAL, CAUTION ESD	V	H	D
047		1	01			6086516-3	DECAL		H	D

## UNIT OF MEASURE CODE

01 = PIECE EACH	31 = OUNCE (AVOZ)
11 = INCH	38 = OUNCE (TROY)
12 = FEET	41 = GRAM
18 = CUBIC FOOT	44 = CUBIC CENTIMETER
21 = METER	59 = FLUID OUNCE
26 = MILLIMETER	68 = CUBIC INCH

## SYMBOL CODE (S7)

FOR GOVERNMENT STANDARD ITEMS: E = ELECTROSTATIC SENSITIVE, H = HEAT SENSITIVE, S = SOLVENT SENSITIVE, M = MULTISENSITIVE  
 FOR OTHER ITEMS: V, E, H, S, M = VENDOR ITEM - SEE IBM CONTROL DRAWING, E, H, S, M ALSO INDICATES THESE ITEMS ARE PROCESS SENSITIVE  
 AS INDICATED ABOVE FOR "GOVERNMENT STANDARD ITEMS."

## PLANNING CODE (PL)

K = ALTERNATE ITEM P = BRJF MATL (ALL OTHER PL CODES ARE FOR IBM REF ONLY; EG, G = GOVT FURN ITEM J = AS REQ)  
 L = DO NOT FILL N = VENDOR FURN R = REF X = DO NOT GENERATE Z = DUMMY CONNECT

## CHARACTER CODE (CH)

A = WITH BBL OF MATL D = WITHOUT BBL OF MATL R = FACTORY REF

PARTS LIST	<b>IBM</b>	FEDERAL SYSTEMS DIVISION	CONTRACT NO.	FSCM	REVISION
			SEE DRAWING	03660 PL 6966000	J 17 NOV 69

LIST TITLE	ENGINEERING NOTICE	SHEET
COMPUTER, GENERAL PURPOSE (S.S.)	EN66482FD	18 OF 23

ITEM NO.	REFERENCE DESIGNATION	QUANTITY REQUIRED	UNIT MEAS.	FSCM	DRAWING OR DOCUMENT NO.	PART OR IDENTIFYING NO.	NOMENCLATURE (W/ DESCRIPTION)	SY	PL	CH
ITEMS COMMON TO PART NUMBER 6966000-1										
001		1	01			6966015-1	PANEL ASSY, ELECTRICAL CONNECTOR			A
002		1	01			6966005-1	CHASSIS, RM			A
003		1	01			6966006-1	CHASSIS, LM			A
004	A1	1	01			6966010-1	PANEL ASSY, FRONT			A
005		1	01			6966007-1	PLENUM ASSY, REAR			A
006		1	01			6966008-1	COVER, HEAT EXCHANGER			A
007		1	01			6966009-1	COVER ASSY, BOTTOM			A
007			01			6966009-2	COVER ASSY, BOTTOM			A
008		1	01			6966091-1	PLATE, IDENT			S
009		1	01			6966081-99	BATTERY BACKUP UNIT FOR SS AP101S			A
010	A2	1	01			6966020-1	PAGE ASSY, A/D			A
011	A3-5	3	01			6966025-1	PAGE ASSY, DCTAL MIA			A
012	A7	1	01			6966035-1	PAGE ASSY, IB			A
013	A6	1	01			6966030-1	PAGE ASSY, MC			A
014	A8	1	01			6966040-1	PAGE ASSY, SI			A
015	A12	1	01			6966045-1	PAGE ASSY, FB			A
016	A9	1	01			6966050-1	PAGE ASSY, FT			A
017	A13	1	01			6966055-1	PAGE ASSY, IM			A
018	A22	1	01			6967090-1	45V CONVERTER			A
019	A23	1	01			6967091-1	12V CONVERTER			A
020	A14	1	01			6966062-1	PAGE ASSY-CPU3			A
021	A15	1	01			6966063-1	PAGE ASSY-CPU2			A
022	A16	1	01			6966064-1	PAGE ASSY-CPU1			A
023	A17	1	01			6966065-1	PAGE ASSY-INTERRUPT			A
024	A18	1	01			6966066-1	PAGE ASSY-RAU2			A
025	A19	1	01			6966067-1	PAGE ASSY-RAU1			A
026	A20-21	2	01			6966070-1	PAGE ASSY-CMOS			A
027		AR		81349		MIL-S-22673AR-C	COMPOUND, SEALING			P
028		AR		81349		MIL-S-22673AR-Y	PRIMER, SEALING COMPOUND			P
029		6	01			6217660-1	HEBGELOCK ASSY			A
030		2	01			6195617-5	STRIP, RUBBER			D

UNIT OF MEASURE CODE 01 = PIECE EACH 11 = INCH 12 = FEET 18 = CUBIC FOOT 21 = WELTER 26 = MILLIMETER 31 = OUNCE (AVOZ) 36 = OUNCE (TROY) 41 = GRAM 44 = CUBIC CENTIMETER 59 = FLUID OUNCE 66 = CUBIC INCH	SYMBOL CODE (SY) FOR GOVERNMENT STANDARD ITEMS: E = ELECTROSTATIC SENSITIVE, H = HEAT SENSITIVE, S = SOLVENT SENSITIVE, M = MULTISENSITIVE FOR OTHER ITEMS: V, E, H, S, M = VENDOR ITEM - SEE IBM CONTROL DRAWING; E, H, S, M ALSO INDICATES THESE ITEMS ARE PROCESS SENSITIVE AS INDICATED ABOVE FOR "GOVERNMENT STANDARD ITEMS" PLANNING CODE (PL) * = ALTERNATE ITEM P = BULK MAT. (ALL OTHER PL CODES ARE FOR IBM REF ONLY; EG, 6 = GOVT FURN ITEM J = AS REQ L = DO NOT FILL N = VENDOR FURN R = REF X = DO NOT GENERATE Z = DUMMY CONNECT CHARACTER CODE (CH) A = WITH BIL OF MAT D = WITHOUT BIL OF MAT R = FACTORY REF
---	---

PARTS LIST	<b>IBM</b>	FEDERAL SYSTEMS DIVISION	CONTRACT NO.	FSCN	REVISION
			SEE DRAWING	03540	PL 6965000
LITR DATE			ENGINEERING NOTICE		SHEET
17NOV59			EN66482FD		19 OF 23

LIBRARY

COMPUTER, GENERAL PURPOSE (S.S.)

ITEM NO.	REFERENCE DESIGNATION	QUANTITY REQUIRED	UNIT MEAS.	FSCN	DRAWING OR DOCUMENT NO.	PART OR IDENTIFYING NO.	NOMENCLATURE OR DESCRIPTION	BY	PL	CH
ITEMS COMMON TO PART NUMBER 6955000-1										
031		18	01			6217660-2	WEDGELOCK ASSY			A
032		1	01			6966093-1	DECAL, WEIGHT WARN			D
034		12	01	96706		MS15795-806	WASHER, FLAT, NORG	V	L	D
035		24	01		MS16533	MS16533-4018	RING-RETAINING			L
037		12	01	96706	MS16995	MS16995-17	SCREW, CAP, SOCKET HEAD			L
038		9	01	96706	MS16995	MS16996-11	SCREW, CAP, SCH, SOCKET HEAD			L
039		6	01		MS16995	MS16996-12	SCREW 10-32X.750 SOC HD			L
060		2	01	96706		MS11957-15	SCREW, MACHINE-PAN HEAD			L
041		2	01	96706		MS15795-803	WASHER, FLAT, NO 4	V	L	D
042		14	01	80205		MS8620C10L	WASHER, FLAT #10			L
043		2	01			MS11848-65	LOCK WASHER			L
044		AR				6032466-2	ENCAPSULANT, POLYURETHANE	V	P	D
045		24	01			6954407-1	WASHER, STEP			L
046		1	01			6135527-1	DECAL, CAUTION ESD	V	H	D
047		1	01			6086516-3	DECAL			D

UNIT OF MEASURE CODE

01 = PIECE EACH  
 11 = INCH  
 13 = FEET  
 16 = CUBIC FOOT  
 21 = METER  
 26 = MILLIMETER  
 31 = OUNCE (AVDP)  
 38 = OUNCE (TROY)  
 41 = GRAM  
 44 = CUBIC CENTIMETER  
 59 = FLUID OUNCE  
 66 = CUBIC INCH

SYMBOL CODE (S):

FOR GOVERNMENT STANDARD ITEMS: E = ELECTROSTATIC SENSITIVE, H = HEAT SENSITIVE, S = SOLVENT SENSITIVE, M = MULTISENSITIVE.  
 FOR OTHER ITEMS: V, E, H, S or M = VENDOR ITEM - SEE IBM CONTROL DRAWING. E, H, S or M ALSO INDICATES THESE ITEMS ARE PROCESS SENSITIVE AS INDICATED ABOVE FOR "GOVERNMENT STANDARD ITEMS"

PLANNING CODE (PL):

H = ALTERNATE ITEM, P = BULK MAIL, (ALL OTHER PL CODES ARE FOR IBM REF ONLY), EG, 8 = GOVT PURN ITEM, 1 = AS REQ  
 L = DO NOT FILL, N = VENDOR FURN, R = REF, 2 = DO NOT GENERATE, Z = DUMMY CONNECT

CHARACTER CODE (CH):

A = WITH BGA OF MAT, D = WITHOUT BGA OF MAT, B = FACTORY REF

PARTS LIST		IBM FEDERAL SYSTEMS DIVISION		CONTRACT NO.	FSCM	PL 6966000	REVISION			
SEE DRAWINGS						03640	LTR J DATE 17 NOV 69			
LIST TITLE COMPUTER, GENERAL PURPOSE (S.S.)							ENGINEERING NOTICE EN66482FD	SHEET 20 OF 23		
ITEM NO.	REFERENCE DESIGNATION	QUANTITY REQUIRED	UNIT MEAS.	FSCM	DRAWING OR DOCUMENT NO.	PART OR IDENTIFYING NO.	NOMENCLATURE OR DESCRIPTION	BY	PL	CHK
ITEMS COMMON TO PART NUMBER 6966000-2										
001		1	01			6966015-1	PANEL ASSY, ELECTRICAL CONNECTOR			K A
001		1	01			6966015-3	PANEL ASSY, ELECTRICAL CONNECTOR			A A
002		1	01			6966005-2	CHASSIS, RH			A A
003		1	01			6966006-2	CHASSIS, LH			A A
004	A1	1	01			6966010-1	PANEL ASSY, FRONT			A A
005		1	01			6966007-1	PLENUM ASSY, REAR			A A
006		1	01			6966008-1	COVER, HEAT EXCHANGER			A A
007		1	01			6966009-1	COVER ASSY, BOTTOM			K A
007		1	01			6966009-2	COVER ASSY, BOTTOM			A A
008		1	01			6966091-1	PLATE, IDENT			S D
009		1	01			6966081-1	BATTERY BACKUP UNIT FOR SS AP101S			E K A
009		1	01			6966081-2	BATTERY BACKUP UNIT FOR SS AP101S			E K A
010	A2	1	01			6966020-1	PAGE ASSY, A/D			K A
010	A2	1	01			6966022-2	PAGE ASSY, A/D			E A
011	A3-5	3	01			6966025-1	PAGE ASSY, OCTAL MIA			E K A
011	A3-5	3	01			6966025-2	PAGE ASSY, OCTAL MIA			E K A
012	A7	1	01			6966035-1	PAGE ASSY, IB			E K A
012	A7	1	01			6966035-2	PAGE ASSY, IB			E A
013	A6	1	01			6966030-1	PAGE ASSY, MC			E K A
013	A6	1	01			6966030-2	PAGE ASSY, MC			E A
014	A8	1	01			6966040-1	PAGE ASSY, SI			E K A
014	A8	1	01			6966040-2	PAGE ASSY, SI			E A
015	A12	1	01			6966045-1	PAGE ASSY, FB			E K A
015	A12	1	01			6966045-2	PAGE ASSY, FB			E A
016	A9	1	01			6966050-1	PAGE ASSY, FT			E K A
016	A9	1	01			6966050-2	PAGE ASSY, FT			E A
017	A13	1	01			6966055-1	PAGE ASSY, IM			E K A
017	A13	1	01			6966055-2	PAGE ASSY, IM			E A
018	A22	1	01			6967090-1	45V CONVERTER			E A
019	A23	1	01			6967091-1	12V CONVERTER			E A
020	A14	1	01			6966062-1	PAGE ASSY-CPU3			K A
UNIT OF MEASURE CODE				SYMBOL CODE (S): FOR GOVERNMENT STANDARD ITEMS: E = ELECTROSTATIC SENSITIVE, H = HEAT SENSITIVE, S = SOLVENT SENSITIVE, M = MULTISENSITIVE						
01 = PIECE EACH	31 = OUNCE (AVOZ)	FOR OTHER ITEMS: V, E, H, S, or M = VENDOR ITEM - SEE IBM CONTROL DRAWING. E, H, S, or M ALSO INDICATES THESE ITEMS ARE PROCESS SENSITIVE AS INDICATED ABOVE FOR "GOVERNMENT STANDARD ITEMS."								
11 = INCH	35 = OUNCE (TROY)	PLANNING CODE (PL): L = ALTERNATE ITEM, P = BULK MAIL (ALL OTHER PL CODES ARE FOR IBM REF ONLY); EA, S = GOVT FURN ITEM, J = AS REQ								
12 = FEET	41 = GRAM	R = DO NOT FILL, N = VENDOR FURN, R = REF, X = DO NOT GENERATE, Z = QUANTITY CONNECT								
18 = CUBIC FOOT	44 = CUBIC CENTIMETER	CHARACTER CODE (CC): A = WITH BULK OF MAIL, B = WITHOUT BULK OF MAIL, F = FACTORY DEF								
19 = CUBIC INCH	59 = FLUID OUNCE									
21 = METER	66 = CUBIC INCH									
26 = MILLIMETER	68 = CUBIC INCH									

PARTS LIST	<b>IBM</b>	FEDERAL SYSTEMS DIVISION	CONTRACT NO.	FSCM	REVISION
			SEE DRAWING	05640 PL 6966000	J 17 NOV 89

LIST TITLE	ENGINEERING NOTICE	SHEET
COMPUTER, GENERAL PURPOSE (S.S.)	EN66482FD	21 OF 23

ITEM NO.	REFERENCE DESIGNATION	QUANTITY REQUIRED	UNIT MEAS.	FSCM	DRAWING OR DOCUMENT NO.	PART OR IDENTIFYING NO.	NOMENCLATURE OR DESCRIPTION	BY	PL	CHK
ITEMS COMMON TO PART NUMBER 695600-2										
020	A14	1	01			6966068-2	CIRCUIT CARD ASSY, CPU3	E	K	A
021	A15	1	01			6966063-1	PAGE ASSY, CPU2	E	K	A
021	A15	1	01			6966069-2	PAGE ASSY, CPU2	E	K	A
022	A16	1	01			6966064-1	PAGE ASSY, CPU1	E	K	A
023	A17	1	01			6966065-1	PAGE ASSY, INTERRUPT	E	K	A
023	A17	1	01			6966065-2	PAGE ASSY, INTERRUPT	E	K	A
024	A18	1	01			6966066-1	PAGE ASSY, MMU2	E	K	A
024	A18	1	01			6966066-2	PAGE ASSY, MMU2	E	K	A
025	A19	1	01			6966067-1	PAGE ASSY, MMU1	E	K	A
025	A19	1	01			6966067-2	PAGE ASSY, MMU1	E	K	A
026	A20-21	2	01			6966070-1	PAGE ASSY, CMOS	E	K	A
026	A20-21	2	01			6966070-2	PAGE ASSY, CMOS	E	K	A
027		AR		81349		MIL-S-22473GR-C	COMPOUND, SEALING			P
028		AR		81349		MIL-S-22473GR-T	PRIMER, SEALING COMPOUND			P
029		6	01			6217660-1	WEDGELOCK ASSY			A
030		2	01			6195617-5	STRIP, RUBBER			A
031		18	01			6217660-2	WEDGELOCK ASSY			A
032		1	01			6966093-1	DECAL, WEIGHT WARN			A
034		12	01	96906		MS15795-806	WASHER, FLAT, NO 6	V	L	D
035		24	01		MS16633	MS16633-6018	RING-RETAINING			L
037		12	01	96906	MS16995	MS16995-17	SCREW, CAP, SOCKET HEAD			L
038		8	01	96906	MS16995	MS16995-11	SCREW, CAP, SCH, SOCKET HEAD			L
039		6	01		MS16995	MS16995-12	SCREW 10-32X.750 SOC HD			L
040		2	01	96906		MS15795-13	SCREW, MACHINE-PAN HEAD			L
041		2	01	96906		MS15795-803	WASHER, FLAT, NO 4	V	L	D
042		14	01	80205		MS5620C10L	WASHER, FLAT #10			L
043		2	01			MS51848-43	LOCK WASHER			L
044		AR				6032466-2	ENCAPSULANT, POLYURETHANE			V
045		24	01			6954407-1	WASHER, STEP			L
046		1	01			6135527-1	DECAL, CAUTION ESD			V
047		1	01			6086516-3	DECAL			H

UNIT OF MEASURE CODE 01 = PIECE EACH 11 = INCH 12 = FEET 18 = CUBIC FOOT 21 = METER 28 = MILLIMETER 31 = OUNCE (AVDP) 35 = OUNCE (TROP) 41 = GRAM 44 = CUBIC CENTIMETER 58 = FLUID OUNCE 66 = CUBIC INCH	SYMBOL CODE (S): FOR GOVERNMENT STANDARD ITEMS E = ELECTROSTATIC SENSITIVE, H = HEAT SENSITIVE, S = SOLVENT SENSITIVE or M = MULTISENSITIVE. FOR OTHER ITEMS: V, E, H, S or M = VENDOR ITEM - SEE IBM CONTROL DRAWING. E, H, S or M ALSO INDICATES THESE ITEMS ARE PROCESS SENSITIVE AS INDICATED ABOVE FOR "GOVERNMENT STANDARD ITEMS". PLANNING CODE (PL): K = ALTERNATE ITEM P = BULK MATL. (ALL OTHER PL CODES ARE FOR IBM REF ONLY; EG, S = GOVT FURN ITEM J = AS REQ L = DO NOT FILL N = VENDOR FURN R = REF X = DO NOT GENERATE Z = DUMMY CONNECT) CHARACTER CODE (CH): A = WITH BUL OF MATL D = WITHOUT BUL OF MATL R = FACTORY REF
--	---

PARTS LIST

IBM

FEDERAL SYSTEMS DIVISION

CONTRACT NO.

SEE DRAWING

FSCM

05660 PL 6965000

REVISION

LTR DATE J 17 NCV89

LIST TITLE

COMPUTER, GENERAL PURPOSE (S.S.)

ENGINEERING NOTICE  
EN66482FD

SHEET

22 OF 23

ITEM NO.	REFERENCE DESIGNATION	QUANTITY REQUIRED	UNIT MEAS.	FSCM	DRAWING OR DOCUMENT NO.	PART 'N IDENTIFYING NO.	NOMENCLATURE OR DESCRIPTION	BY	PL	CH
ITEMS	COMMON TO PART	NUMBER	695500-200							
001		1	01			6966015-20	PANEL ASSY, ELECTRICAL CONNECTOR			A
002		1	01			6966005-2	CHASSIS, RH			A
003		1	01			6966006-2	CHASSIS, LH			A
004	A1	1	01			6966010-2	PANEL ASSY, FRONT			A
005		1	01			6966007-1	PLENUM ASSY, REAR			A
006		1	01			6966008-1	COVER, HEAT EXCHANGER			A
007		1	01			6966009-2	COVER ASSY, BOTTOM			A
008		1	01			6966091-1	PLATE, IDENT			D
009		1	01			6966081-20	BATTERY BACKUP UNIT FOR 55 AP1015	E		A
010	A2	1	01			6966022-20	PAGE ASSY, A/D	E		A
011	A3-5	3	01			6966025-20	PAGE ASSY, OCTAL NIA	E		A
012	A7	1	01			6966035-20	PAGE ASSY, IB	E		A
013	A6	1	01			6966030-20	PAGE ASSY, MC	E		A
014	A8	1	01			6966040-21	PAGE ASSY, SI	E		A
015	A12	1	01			6966045-20	PAGE ASSY, PB	E		A
016	A9	1	01			6966050-20	PAGE ASSY, FT	E		A
017	A13	1	01			6966055-20	PAGE ASSY, IM	E		A
018	A22	1	01			6967090-20	+5V CONVERTER	E		A
019	A23	1	01			6967091-21	12V CONVERTER	E		A
020	A14	1	01			6966068-21	CIRCUIT CARD ASSY, CPU3	E		A
021	A15	1	01			6966069-20	PAGE ASSY, CPU2	E		A
022	A16	1	01			6966064-20	PAGE ASSY, CPU1	E		A
023	A17	1	01			6966065-21	PAGE ASSY, INTERRUPT	E		A
024	A18	1	01			6966086-21	PAGE ASSY, MMU2	E		A
025		1	01			6966067-21	PAGE ASSY, MMU1	E		A
026	A20-21	2	01			6966070-20	PAGE ASSY, CMOS	E	K	A
026	A20-21	2	01			6966070-22	PAGE ASSY, CMOS	E	K	A
026	A20-21	2	01			6966070-23	PAGE ASSY, CMOS	E		A
027		AR		81349		MIL-S-22473GR-C	COMPOUND, SEALING			P
028		AR		81349		MIL-S-22473GR-T	PRIMER, SEALING COMPOUND			P
029		6	01			6217660-1	WEDGELOCK ASSY			A

## UNIT OF MEASURE CODE

01 = PIECE EACH	31 = OUNCE (AVOZ)
11 = INCH	35 = OUNCE (TROY)
12 = FEET	41 = GRAM
18 = CUBIC FOOT	44 = CUBIC CENTIMETER
21 = METER	55 = FLUID OUNCE
26 = MILLIMETER	64 = CUBIC INCH

## SYMBOL CODE (S):

FOR GOVERNMENT STANDARD ITEMS: E = ELECTROSTATIC SENSITIVE, H = HEAT SENSITIVE, S = SOLVENT SENSITIVE, M = MULTISENSITIVE  
 FOR OTHER ITEMS: V, E, H, S or M = VENDOR ITEM - SEE IBM CONTROL DRAWING, E, H, S or M ALSO INDICATES THESE ITEMS ARE PROCESS SENSITIVE  
 AS INDICATED ABOVE FOR GOVERNMENT STANDARD ITEMS.

## PLANNING CODE (PL):

R = ALTERNATE ITEM P = BULK MATL (ALL OTHER PL CODES ARE FOR IBM REF ONLY; EG, G = GOVT FURN ITEM J = AS REQ  
 L = DO NOT FILL N = VENDOR FURN R = REF X = DO NOT GENERATE Z = QUANTITY CONNECT)

## CHARACTER CODE (CH):

A = WITH BILL OF MATL D = WITHOUT BILL OF MATL F = FACTORY REF

PARTS  
LIST**IBM**

FEDERAL SYSTEMS DIVISION

CONTRACT NO.

SEE DRAWING

FSCM

03640 PL 6966000

REVISION

LTR J  
DATE 17NOV69

LIST TITLE

COMPUTER, GENERAL PURPOSE (S.S.)

ENGINEERING NOTICE:  
EN66482FD

SHEET

23 OF 23

ITEM NO.	REFERENCE DESIGNATION	QUANTITY REQUIRED	UNIT MEAS	FSCM	DRAWING OR DOCUMENT NO.	PART OR IDENTIFYING NO.	NOMENCLATURE OR DESCRIPTION	BY	PL	CH
ITEMS COMMON TO PART NUMBER 6466000-200										
330		2	01			6195617-5	STRIP, RUBBER			D
331		18	01			6217660-2	WEDGELOCK ASSY			A
332		1	01			6966093-1	DECAL, WEIGHT WARN			D
334		12	01	96706		MS15795-806	WASHER FLAT, NO86	V		S
335		24	01		MS16633	MS16633-4018	RING-RETAINING			L
337		12	01	96706	MS16995	MS16995-17	SCREW, CAP, SOCKET HEAD			D
338		8	01	96706	MS16995	MS16996-11	SCREW, CAP, SCH, SOCKET HEAD			L
339		6	01		MS16995	MS16996-12	SCREW 10-32X.750 SOC HD			L
340		2	01	96706		MS51957-13	SCREW, MACHINE-PAN HEAD			L
341		2	01	96706		MS15795-803	WASHER, FLAT, NO 4	V		L
342		14	01	80205		MS620C10L	WASHER, FLAT #10			L
343		2	01			MS51848-45	LOCK WASHER			L
344		AR				6032466-2	ENCAPSULANT, POLYURETHANE	V		P
345		24	01			6954407-1	WASHER, STEP			L
346		1	01			6135527-1	DECAL, CAUTION ESD	V		D
347		1	01			6086516-3	DECAL	H		D

## UNIT OF MEASURE CODE

01 = PIECE EACH    31 = OUNCE (AVOZ)  
 11 = INCH        35 = OUNCE (TROY)  
 12 = FEET        41 = GRAM  
 13 = CUBIC FOOT   44 = CUBIC CENTIMETER  
 21 = METER        59 = FLUID OUNCE  
 26 = MILLIMETER   66 = CUBIC INCH

## SYMBOL CODE (S):

FOR GOVERNMENT STANDARD ITEMS: E = ELECTROSTATIC SENSITIVE, H = HEAT SENSITIVE, S = SOLVENT SENSITIVE, M = MULTISENSITIVE  
 FOR OTHER ITEMS: V, E, H, S or M = VENDOR ITEM - SEE IBM CONTROL DRAWING, E, H, S or M ALSO INDICATES THESE ITEMS ARE PROCESS SENSITIVE  
 AS INDICATED ABOVE FOR "GOVERNMENT STANDARD ITEMS."

## PLANNING CODE (PL):

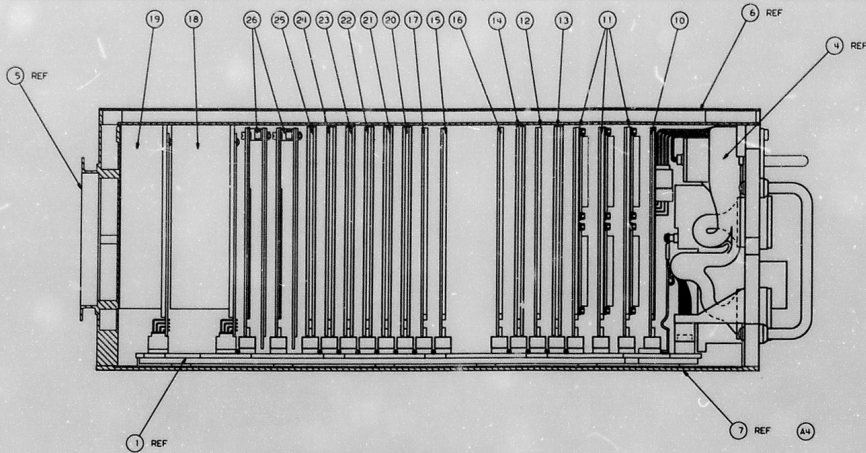
N = ALTERNATE ITEM, P = BULK MATL. (ALL OTHER PL CODES ARE FOR IBM REF ONLY; EG, B = GOVT FURN ITEM, J = AS REQ)  
 L = DO NOT FILL, H = VENDOR FURN, R = REF X = DO NOT GENERATE, Z = DUMMY CONNECT

## CHARACTER CODE (CH):

A = WITH BSA OF MATL, B = WITHOUT BSA OF MATL, R = FACTORY REF



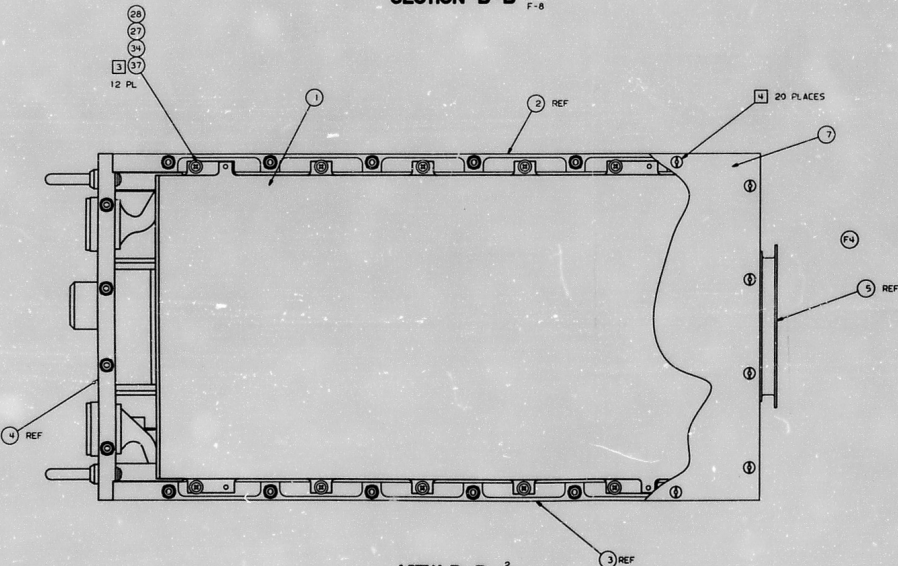




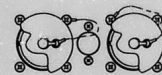
**SECTION B-B**  $\frac{2}{F-8}$



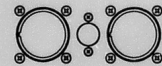
**VIEW H-H**  
SH 2  
Z H-7



**VIEW D-D**  $\frac{2}{A-8}$



VAR E

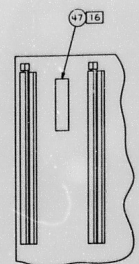
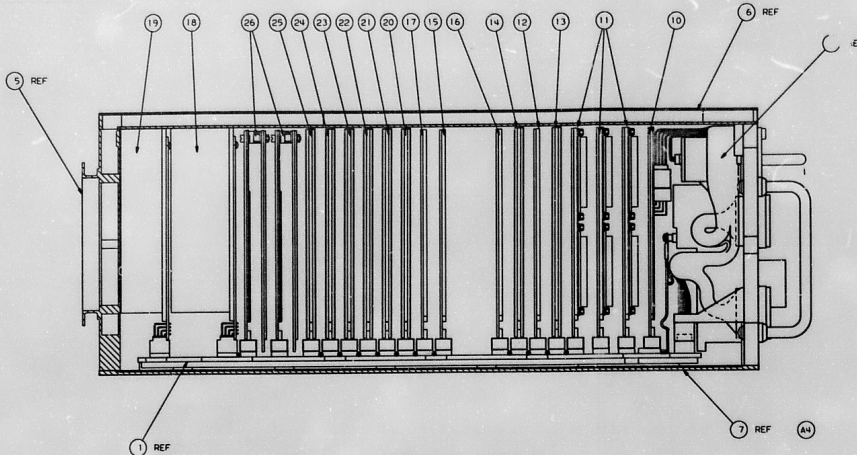


VAR D

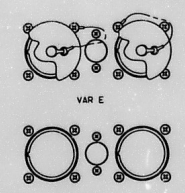
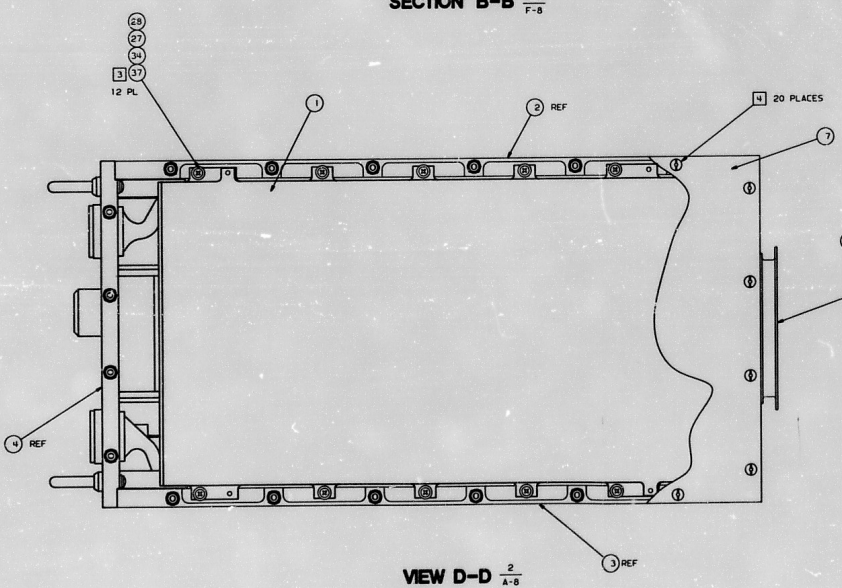
**VIEW J**  
SCALE 1/1  
SH 2  
ZONE F-1

63





5  
VIEW H-H  
SH 2  
Z H-7



VIEW J  
SCALE 1/1  
SH 2  
ZONE F-1

PARTS LIST		IBM		FEDERAL SYSTEMS DIVISION		CONTRACT NO.	FSCM	PL 6966000	R 5	REVISION	LTR D	DATE 28 APR 67		
LIST TITLE										ENGINEERING NOTICE		SHEET		
COMPUTER, GENERAL PURPOSE (S.S.c)										EM64414ZZ		1 OF 6		
ITEM NO.	REFERENCE DESIGNATION	QUANTITY REQUIRED	UNIT MEAS	FSCM	DRAWING OR DOCUMENT NO.	PART OR IDENTIFYING NO.	NOMENCLATURE OR DESCRIPTION					SY	PL	CH
ITEMS COMMON TO PART NUMBER		6966000-1												
001		1	01			6966015-1	PANEL ASSY, ELECTRICAL CONN.							A
002		1	01			6966005-1	CHASSIS, RH							A
003		1	01			6966006-1	CHASSIS, LM							A
004	A1	1	01			6966010-1	PANEL ASSY, FRONT							A
005		1	01			6966007-1	PLENUM, REAR							A
006		1	01			6966008-1	COVER, TOP							A
007		1	01			6966009-1	COVER ASSY, BOTTOM							A
007		1	01			6966009-2	COVER ASSY, BOTTOM							A
008		1	01			6966091-1	PLATE, IDENT							A
009		1	01			6966081-99	BATTERY PAC							A
010	A2	1	01			6966020-1	PAGE ASSY, A/D							A
011	A3-5	3	01			6966025-1	PAGE ASSY, OPTICAL MIA							A
012	A7	1	01			6966035-1	PAGE ASSY, IB							A
013	A6	1	01			6966030-1	PAGE ASSY, MC							A
014	A8	1	01			6966040-1	PAGE ASSY, SI							A
015	A12	1	01			6966045-1	PAGE ASSY, FB							A
016	A9	1	01			6966050-1	PAGE ASSY, FT							A
017	A13	1	01			6966055-1	PAGE ASSY, IM							A
018	A22	1	01			6967090-1	+5V CONVERTER							A
019	A23	1	01			6967091-1	12V CONVERTER							A
020	A14	1	01			6966062-1	PAGE ASSY, CPU3							A
021	A15	1	01			6966063-1	PAGE ASSY, CPU2							A
022	A16	1	01			6966064-1	PAGE ASSY, CPU1							A
023	A17	1	01			6966065-1	PAGE ASSY, INTERRUPT							A
024	A18	1	01			6966066-1	PAGE ASSY, MRU2							A
025	A19	1	01			6966067-1	PAGE ASSY, MRU1							A
026	A20-21	2	01			6966070-1	PAGE ASSY, CHOS							A
027		AR				MIL-S-22473GR-C	COMPOUND, SEALING							P
028		AR				MIL-S-22473GR-T	PRIMER, SEALING COMPOUND							P
029		6	01			6217660-1	WEDGELOCK ASSY							A
030		2	01			6195617-5	STRIP, RUBBER							A

## UNIT OF MEASURE CODE

01 = PIECE EACH	31 = OUNCE (AVDP)
11 = INCH	35 = OUNCE (TRDY)
12 = FEET	41 = GRAM
18 = CUBIC FOOT	44 = CUBIC CENTIMETER
21 = METER	59 = FLUID OUNCE
26 = MILLIMETER	66 = CUBIC INCH

## SYMBOL CODE (S1)

FOR GOVERNMENT STANDARD ITEMS: E = ELECTROSTATIC SENSITIVE H = HEAT SENSITIVE S = SOLVENT SENSITIVE M = MULTISENSITIVE  
 FOR OTHER ITEMS: V E H S or M = VENDOR ITEM - SEE IBM CONTROL DRAWING E H S or M ALSO INDICATES THESE ITEMS ARE PROCESS SENSITIVE  
 AS INDICATED ABOVE FOR GOVERNMENT STANDARD ITEMS

## PLANNING CODE (P1)

K = ALTERNATE ITEM P = BULK MAIL (ALL OTHER PL CODES ARE FOR IBM REF ONLY. EG. G = GOVT FURN ITEM I = AS REQD  
 L = DO NOT FILL N = VENDOR FURN R = REF X = DO NOT GENERATE Z = DUMMY CONNECT)

## CHARACTER CODE (CH)

A = WITH BILL OF MATERIAL D = WITHOUT BILL OF MATERIAL R = FACTORY REF

PARTS  
LIST

IBM

FEDERAL SYSTEMS DIVISION

CONTRACT NO.

SEE DRAWING

FSCM

03640 PL 6966000

REVISION

LTR D  
DATE 28 APR 87

LIST TITLE

COMPUTER, GENERAL PURPOSE (S.S.)

ENGINEERING NOTICE  
EN66414ZZ

SHEET

2 3 6

ITEM NO	REFERENCE DESIGNATION	QUANTITY REQUIRED	UNIT MEAS	FSCM	DRAWING OR DOCUMENT NO	PART OR IDENTIFYING NO	NOMENCLATURE OR DESCRIPTION	SY	PL	CH
ITEMS COMMON TO PART NUMBER 6966000-1										
031		18	01			6217660-2	WEDGELOCK ASSY		A	A
032		1	01			6966093-1	DECAL, WEIGHT WARN		D	D
034		12	01			MS15795-806	WASHER FLAT NO-6	V	L	D
035		24	01	MS16633		MS16633-4018	RING-RETAINING		D	D
037		12	01	MS16995-17		MS16995-17	SCREW, CAP, SCH, 6-32 X .375L		L	D
038		8	01	MS16996		MS16996-11	SCREW, CAP, SCH, NO 10-32 X .62L		L	D
039		6	01	MS16996		MS16996-12	SCREW 10-32 X .750 SOC HD		L	D
040		2	01			MS51957-15	SCREW, PAN HD, 4-40 UNC X .38		L	D
041		2	01			MS15795-803	WASHER, FLAT, NO 4	V	L	D
042		14	01			MS620C10L	WASHER, FLAT #10		L	D
043		2	01			MS51848-45	LOCK WASHER		L	D
044		4R				6032466-2	BONDING, POLYURETHANE		P	D
045		24	01			6954407-1	WASHER, STEP		D	D
046		1	01			6135527-1	DECALS	V	D	D

## UNIT OF MEASURE CODE

01 = PIECE EACH    31 = OUNCE (AVOZ)  
 11 = INCH        35 = OUNCE (TROY)  
 12 = FEET        41 = GRAM  
 16 = CUBIC FOOT    44 = CUBIC CENTIMETER  
 21 = METER        59 = FLUID OUNCE  
 26 = MILLIMETER    66 = CUBIC INCH

## SYMBOL CODE (S)

FOR GOVERNMENT STANDARD ITEMS: E = ELECTROSTATIC SENSITIVE H = HEAT SENSITIVE S = SOLVENT SENSITIVE M = MULTISENSITIVE  
 FOR OTHER ITEMS: V E H S or M = VENDOR ITEM - SEE IBM CONTROL DRAWING E H S or M ALSO INDICATES THESE ITEMS ARE PROCESS SENSITIVE  
 AS INDICATED ABOVE FOR GOVERNMENT STANDARD ITEMS

## PLANNING CODE (PL)

K = ALTERNATE ITEM P = BULK MATL (ALL OTHER PL CODES ARE FOR IBM REF ONLY. EG. G = GOVT FURN ITEM J = AS REQ)  
 L = DO NOT FUL N = VENDOR FURN R = REF X = DO NOT GENERATE Z = DUMMY CONNECT

## CHARACTER CODE (CH)

A = WITH BILL OF MATL D = WITHOUT BILL OF MATL R = FACTORY REF

PARTS LIST		IBM		FEDERAL SYSTEMS DIVISION		CONTRACT NO.	FSCM	PL 6966000	REVISION		
						SEE DRAWING	05640		LTR D DATE 28 APR 67		
LIST TITLE								ENGINEERING NOTICE	SHEET		
COMPUTER, GENERAL PURPOSE (S.S.)								EN66414ZZ	3 OF 6		
ITEM NO.	REFERENCE DESIGNATION	QUANTITY REQUIRED	UNIT MEAS	FSCM	DRAWING OR DOCUMENT NO.	PART OR IDENTIFYING NO.	NOMENCLATURE OR DESCRIPTION		SY	PL	CH
ITEMS COMMON TO PART NUMBER 6966000-2											
001		1	01			6966015-1	PANEL ASSY, ELECTRICAL CONN.			K	A
001		1	01			6966015-3	PANEL ASSY, ELECTRICAL CONN.				A
002		1	01			6966005-2	CHASSIS, RM				A
003		1	01			6966006-2	CHASSIS, LH				A
004	A1	1	01			6966010-1	PANEL ASSY, FRONT				A
005		1	07			6966007-1	PLENUM, REAR				A
006		1	01			6966008-1	COVER, TOP				A
007		1	01			6966009-1	COVER ASSY, BOTTOM			K	A
007		1	01			6966009-2	COVER ASSY, BOTTOM				A
008		1	01			6966091-1	PLATE, IDENT			S	D
009		1	01			6966081-1	BATTERY PAC			K	A
009		1	01			6966081-2	BATTERY PAC				A
010	A2	1	01			6966020-1	PAGE ASSY, A/D			E	K
010	A2	1	01			6966022-2	PAGE ASSY, A/D			E	K
011	A3-5	3	01			6966025-1	PAGE ASSY, DCTAL MIA			E	K
011	A3-5	3	01			6966025-2	PAGE ASSY, DCTAL MIA			E	K
012	A7	1	01			6966035-1	PAGE ASSY, IB			E	K
012	A7	1	01			6966035-2	PAGE ASSY, IB			E	K
013	A6	1	01			6966030-1	PAGE ASSY, MC			E	K
013	A6	1	01			6966030-2	PAGE ASSY, MC			E	K
014	A8	1	01			6966040-1	PAGE ASSY, SI			E	K
014	A8	1	01			6966040-2	PAGE ASSY, SI			E	K
015	A12	1	01			6966045-1	PAGE ASSY, FB			E	K
015	A12	1	01			6966045-2	PAGE ASSY, FB			E	K
016	A9	1	01			6966050-1	PAGE ASSY, FT			E	K
016	A9	1	01			6966050-2	PAGE ASSY, FT			E	K
017	A13	1	01			6966055-1	PAGE ASSY, IM			E	K
017	A13	1	01			6966055-2	PAGE ASSY, IM			E	K
018	A22	1	01			6967090-1	+5V CONVERTER			E	E
C19	A23	1	01			6967091-1	12V CONVERTER			E	E
020	A14	1	01			6966062-1	PAGE ASSY, CPU3			E	K

UNIT OF MEASURE CODE

- 01 = PIECE EACH
- 11 = INCH
- 12 = FEET
- 18 = CUBIC FOOT
- 21 = METER
- 26 = MILLIMETER
- 31 = OUNCE (AVDP)
- 35 = OUNCE (TROY)
- 41 = GRAM
- 44 = CUBIC CENTIMETER
- 59 = FLUID OUNCE
- 66 = CUBIC INCH

SYMBOL CODE (S7)

FOR GOVERNMENT STANDARD ITEMS E = ELECTROSTATIC SENSITIVE, H = HEAT SENSITIVE, S = SOLVENT SENSITIVE, M = MULTISENSITIVE  
 FOR OTHER ITEMS V, E, H, S, M = VENDOR ITEM - SEE IBM CONTROL DRAWING E, H, S, M ALSO INDICATES THESE ITEMS ARE PROCESS SENSITIVE  
 AS INDICATED ABOVE FOR GOVERNMENT STANDARD ITEMS.

PLANNING CODE (PL)

K = ALTERNATE ITEM P = BULK MATL (ALL OTHER PL CODES ARE FOR IBM REF ONLY. EG. G = GOVT FURN ITEM I = AS REQD)  
 L = DO NOT FRL N = VENDOR FURN R = REF X = DO NOT GENERATE Z = DUMMY CONNECT

CHARACTER CODE (CM)

A = WITH BILL OF MATL D = WITHOUT BILL OF MATL R = FACTORY REF

PARTS  
LIST

IBM

FEDERAL SYSTEMS DIVISION

CONTRACT NO.

FSCM

REVISION

SEE DRAWING

03640 PL 6966000

LTR D  
DATE 28APR87

LIST TITLE

COMPUTER, GENERAL PURPOSE (S.S.)

ENGINEERING NOTICE

EN664142Z

SHEET

4 OF 6

ITEM NO.	REFERENCE DESIGNATION	QUANTITY REQUIRED	LIMIT MEAS	FSCM	DRAWING OR DOCUMENT NO.	PART OR IDENTIFYING NO.	NOMENCLATURE OR DESCRIPTION	SY	PL	CH
ITEMS COMMON TO PART NUMBER 6966000-2										
020	A14	1	01			6966068-2	PAGE ASSY, CPU3	E		A
021	A15	1	01			6966063-1	PAGE ASSY, CPU2	E	K	A
021	A15	1	01			6966069-2	PAGE ASSY, CPU2	E		A
022	A16	1	01			6966064-1	PAGE ASSY, CPU1	E		A
023	A17	1	01			6966065-1	PAGE ASSY, INTERRUPT	E	K	A
023	A17	1	01			6966065-2	PAGE ASSY, INTERRUPT	E		A
024	A18	1	01			6966066-1	PAGE ASSY, MRU2	E	K	A
024	A18	1	01			6966066-2	PAGE ASSY, MRU2	E		A
025	A19	1	01			6966067-1	PAGE ASSY, MRU1	E	K	A
025	A19	1	01			6966067-2	PAGE ASSY, MRU1	E		A
026	A20-21	2	01			6966070-1	PAGE ASSY, CMOS	E	K	A
026	A20-21	2	01			6966070-2	PAGE ASSY, CMOS	E		A
027		AR				MIL-S-22473GR-C	COMPOUND, SEALING			F
028		AR				MIL-S-22473GR-T	PRIMER, SEALING COMPOUND			P
029		6	01			6217660-1	WEDGELOCK ASSY			A
030		2	01			6195617-5	STRIP, RUBBER			A
031		18	01			6217660-2	WEDGELOCK ASSY			A
032		1	01			6966093-1	DECAL, WEIGHT WARN			A
034		12	01			MS15795-806	WASHER FLAT NO.6	V	L	D
035		24	01	MS16633		MS16633-4018	RING-RETAINING			L
037		12	01	MS16995-17		MS16995-17	SCREW, CAP, SCH, 6-32 X .375L			L
038		8	01	MS16996		MS16996-11	SCREW, CAP, SCH, NO 10-32 X .62L			L
039		6	01	MS16996		MS16996-12	SCREW 10-32X.750 SOC HD			L
040		2	01	MS16996		MS51957-15	SCREW, PAN HD, 4-40 UNC X.38			L
041		2	01			MS15795-803	WASHER, FLAT, NO 4	V	L	D
042		14	01			MS5620C10L	WASHER, FLAT #10			L
043		2	01			MS51848-45	LOCK WASHER			L
044		AR				6032466-2	BONDING, POLYURETHANE			P
045		24	01			6954407-1	WASHER, STEP			D
046		1	01			6135527-1	DECALS	V		D

## UNIT OF MEASURE CODE

01 = PIECE EACH  
11 = INCH  
12 = FEET  
18 = CUBIC FOOT  
21 = METER  
25 = MILLIMETER  
31 = OUNCE (AVDP)  
35 = OUNCE (TROY)  
41 = GRAM  
44 = CUBIC CENTIMETER  
59 = FLUID OUNCE  
66 = CUBIC INCH

## SYMBOL CODE (SY)

FOR GOVERNMENT STANDARD ITEMS E = ELECTROSTATIC SENSITIVE H = HEAT SENSITIVE S = SOLVENT SENSITIVE M = MULTISENSITIVE  
FOR OTHER ITEMS V E H S or M = VENDOR ITEM - SEE IBM CONTROL DRAWING E H S or M ALSO INDICATES THESE ITEMS ARE PROCESS SENSITIVE  
AS INDICATED ABOVE FOR GOVERNMENT STANDARD ITEMS

## PLANNING CODE (PL)

K = ALTERNATE ITEM P = BULK MATL (ALL OTHER PL CODES ARE FOR IBM REF ONLY, EG. G = GOVT FURN ITEM J = AS REQD  
L = DO NOT FILL N = VENDOR FURN R = REF X = DO NOT GENERATE Z = DUMMY CONNECT)

## CHARACTER CODE (CH)

A = WITH BILL OF MATL D = WITHOUT BILL OF MATL R = FACTORY REF

PARTS LIST		IBM		FEDERAL SYSTEMS DIVISION		CONTRACT NO.	FSCM	PL 6966000	REVISION		
LAST TITLE						SEE DRAWING	03640	PL 6966000	LTR D DATE 28APR67		
COMPUTER, GENERAL PURPOSE (S.S.)								ENGINEERING NOTICE EN6641477	SHEET 5 OF 6		
ITEM NO.	REFERENCE DESIGNATION	QUANTITY REQUIRED	UNIT MEAS	FSCM	DRAWING OR DOCUMENT NO.	PART OR IDENTIFYING NO.	NOMENCLATURE OR DESCRIPTION		SY	PL	CH
ITEMS COMMON TO PART NUMBER		6966000-20									
001		1	01			6966015-2	PANEL ASSY, ELECTRICAL COMM.				A
002		1	01			6966005-2	CHASSIS, RM				A
003		1	01			6966006-2	CHASSIS, LH				A
004	A1	1	01			6966010-2	PANEL ASSY, FRONT				A
005		1	01			6966007-1	PLENUM, REAR				A
006		1	01			6966008-1	COVER, TOP				A
007		1	01			6966009-2	COVER ASSY, BOTTOM				A
008		1	01			6966091-1	PLATE, IDENT				A
009		1	01			6966081-20	BATTERY PAC				A
010	A2	1	01			6966022-20	PAGE ASSY, A/D		E		A
011	A3-5	3	01			6966025-20	PAGE ASSY, OCTAL MIA		E		A
012	A7	1	01			6966035-20	PAGE ASSY, IB		E		A
013	A6	1	01			6966030-20	PAGE ASSY, MC		E		A
014	A8	1	01			6966040-20	PAGE ASSY, SI		E		A
015	A12	1	01			6966045-20	PAGE ASSY, FB		E		A
016	A9	1	01			6966050-20	PAGE ASSY, FT		E		A
017	A13	1	01			6966055-20	PAGE ASSY, IM		E		A
018	A22	1	01			6967090-20	+5V CONVERTER		E		A
019	A23	1	01			6967091-20	12V CONVERTER		E		A
020	A14	1	01			6966048-20	PAGE ASSY, CPU3		E		A
021	A15	1	01			6966069-20	PAGE ASSY, CPU2		E		A
022	A16	1	01			6966064-20	PAGE ASSY, CPU1		E		A
023	A17	1	01			6966065-20	PAGE ASSY, INTERRUPT		E		A
024	A18	1	01			6966066-20	PAGE ASSY, MMU2		E		A
025	A19	1	01			6966067-20	PAGE ASSY, MMU1		E		A
026	A20-21	2	01			6966070-20	PAGE ASSY, CMOS		E		A
027		AR				MIL-S-22473GR-C	COMPOUND, SEALING				P
028		AR				MIL-S-22473GR-T	PRIMER, SEALING COMPOUND				P
029		6	01			6217660-1	WEDGELOCK ASSY				A
030		2	01			6195617-5	STRIP, RUBBER				A
031		18	01			6217660-2	WEDGELOCK ASSY				A

## UNIT OF MEASURE CODE

01 = PIECE EACH      31 = OUNCE (AVDP)  
 11 = INCH            35 = OUNCE (TRDY)  
 12 = FEET            41 = GRAM  
 18 = CUBIC FOOT    44 = CUBIC CENTIMETER  
 21 = METER          59 = FLUID OUNCE  
 26 = MILLIMETER    66 = CUBIC INCH

## SYMBOL CODE (SY)

FOR GOVERNMENT STANDARD ITEMS E = ELECTROSTATIC SENSITIVE H = HEAT SENSITIVE S = SOLVENT SENSITIVE M = MULTISENSITIVE  
 FOR OTHER ITEMS V E H S or M = VENDOR ITEM - SEE IBM CONTROL DRAWING E H S or M ALSO INDICATES THESE ITEMS ARE PROCESS SENSITIVE  
 AS INDICATED ABOVE FOR GOVERNMENT STANDARD ITEMS

## PLANNING CODE (PL)

R = ALTERNATE ITEM P = BULK MATL (ALL OTHER PL CODES ARE FOR IBM REF ONLY. EG. C = GOVT FURN ITEM I = AS REQD  
 L = DO NOT FILL N = VENDOR FURN R = REF X = DO NOT GENERATE Z = DUMMY CONNECT)

## CHARACTER CODE (CH)

A = WITH BILL OF MATL D = WITHOUT BILL OF MATL F = FACTORY REF

PARTS LIST		IBM FEDERAL SYSTEMS DIVISION			CONTRACT NO.	FSCM	REVISION	LTR	DATE			
COMPUTER, GENERAL PURPOSE (S.S.)							ENGINEERING NOTICE EM66414ZZ	0	28 APR 87			
LIST TITLE							SHEET	6	6			
ITEM NO.	REFERENCE DESIGNATION	QUANTITY REQUIRED	UNIT MEAS	FSCM	DRAWING OR DOCUMENT NO.	PART OR IDENTIFYING NO.	NOMENCLATURE OR DESCRIPTION		SY	PL	CH	
ITEMS COMMON TO PART NUMBER 6966000-20												
032		1	01			6966093-1	DECAL, WEIGHT WARN				D	
034		12	01			MS15795-806	WASHER FLAT NO.6		V	L	U	
035		24	01	MS16633		MS16633-4018	RING-RETAINING				L	
037		12	01	MS16995-17		MS16995-17	SCREW, CAP, SCH, 6-32 X .375L				L	
038		8	01	MS16996		MS16996-11	SCREW, CAP, SCH, NO 10-32 X .62L				L	
039		6	01	MS16996		MS16996-12	SCREW 10-32X.750 SDC HD				L	
040		2	01	MS16996		MS51957-15	SCREW, PAN HD, 4-40 UNC X.38				L	
041		2	01			MS15795-803	WASHER, FLAT, NO 4		V	L	U	
042		14	01			MS620C10L	WASHER, FLAT #10				L	
043		2	01			MS51848-45	LOCK WASHER				L	
044		AR				6032466-2	BONDING, POLYURETHANE				P	
045		24	01			6954407-1	WASHER, STEP				D	
046		1	01			6135527-1	DECALS		V		D	
UNIT OF MEASURE CODE				SYMBOL CODE (SY)								
01 = PIECE EACH	31 = OUNCE (AVDP)	FOR GOVERNMENT STANDARD ITEMS: E = ELECTROSTATIC SENSITIVE, H = HEAT SENSITIVE, S = SOLVENT SENSITIVE, M = MULTISENSITIVE										
11 = INCH	35 = OUNCE (TROY)	FOR OTHER ITEMS: V, E, H, S, or M = VENDOR ITEM - SEE IBM CONTROL DRAWING; L, H, S, or M ALSO INDICATES THESE ITEMS ARE PROCESS SENSITIVE AS INDICATED ABOVE FOR GOVERNMENT STANDARD ITEMS.										
12 = FEET	41 = GRAM	PLANNING CODE (PL)										
18 = CUBIC FOOT	44 = CUBIC CENTIMETER	K = ALTERNATE ITEM, P = PLAK MATL (ALL OTHER PL CODES ARE FOR IBM REF ONLY, EG, G = GOVT FURN ITEM, J = AS REQD)										
21 = METER	59 = FLUID OUNCE	L = DO NOT FILL, N = VENDOR FURN, R = REF, X = DO NOT GENERATE, Z = (DUMMY CONNECT)										
26 = MILLIMETER	66 = CUBIC INCH	CHARACTER CODE (CH)										
										A = WITH BILL OF MATL	D = WITHOUT BILL OF MATL	R = FACTORY REF