

Classification canceled by authority of  
OPNAVINST S5513.16 enclosure (2)

on 13 SEP 44 Wm. C. Bomer CDR  
(Date) (Signature) (Rank)

NAVAL SEA SYSTEMS COMMAND  
Department of the Navy

# U. S. S. YORKTOWN (CV5)

## BOMB DAMAGE

CORAL SEA

MAY 8, 1942

The Commander-in-Chief, United States Fleet and Chief of Naval Operations directs that this report be shown only to those persons to whom the report would be of value in the performance of their duties.

Steps shall be taken accordingly to insure that the report will be seen by those persons responsible for design, construction and repair of naval vessels, as well as for their operation, but by no others.

28 November, 1942

Bureau of Ships  
Navy Department

WAR DAMAGE REPORT No. 23





Photo 1: Bomb Damage to Port Shell, looking aft, FRS108-112.

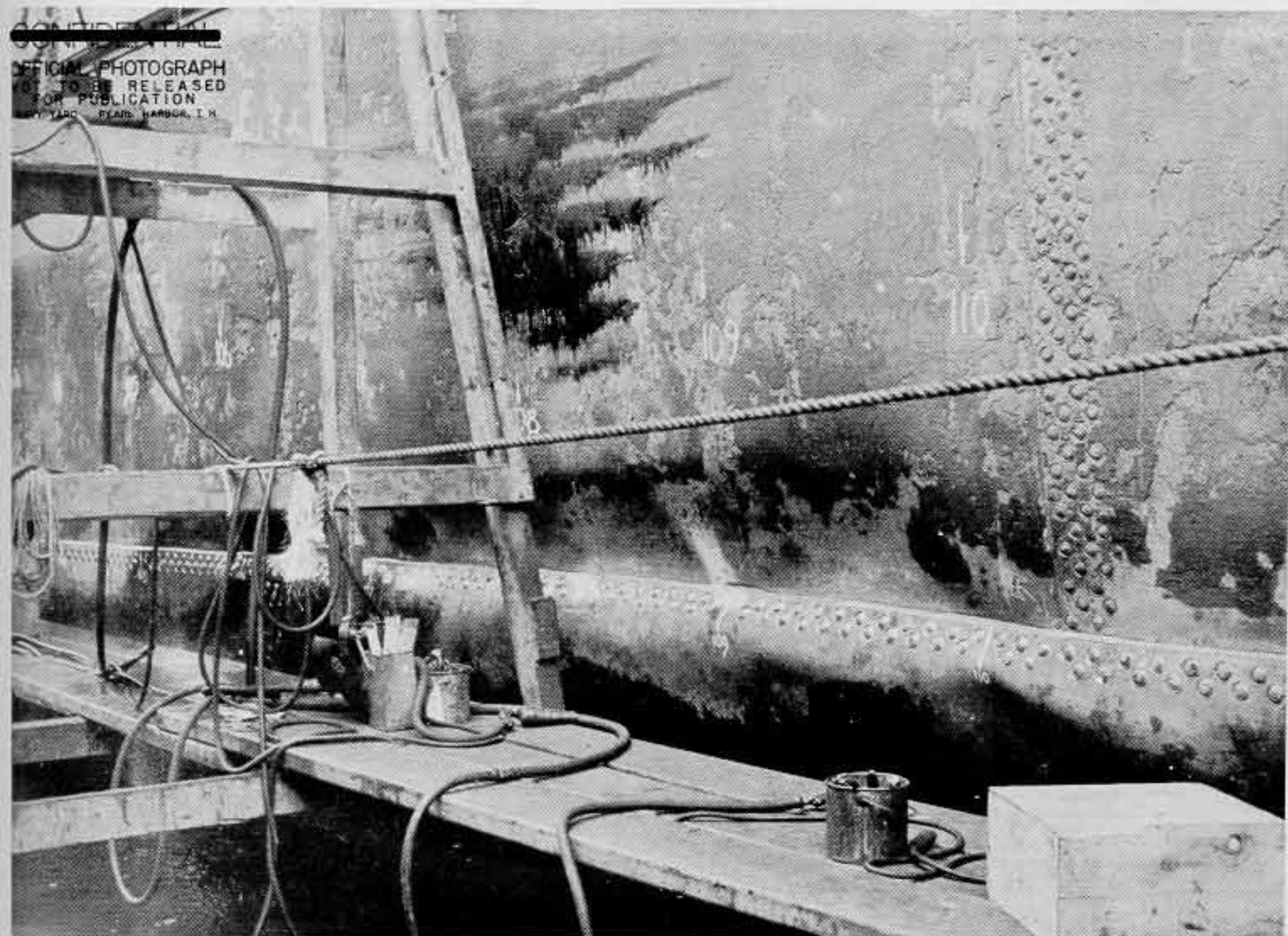


Photo 2: Bomb Damage to Port Shell, FRS 104-11, temporary repairs complete.





Photo 3: Bomb Damage to Port Shell, FR 110, details of temporary repairs.

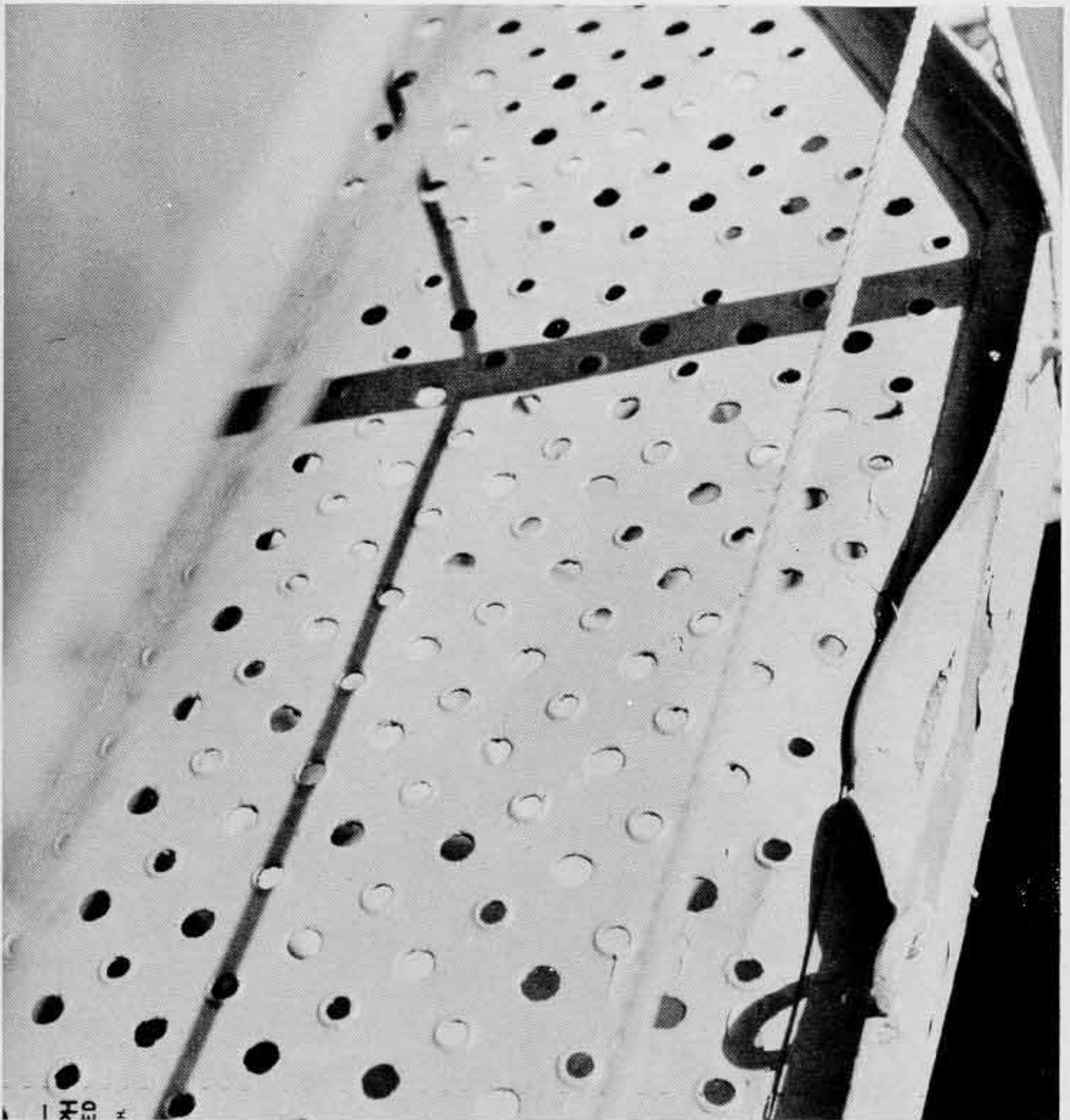


Photo 4: Damage to Coaming of Starboard Gallery Walkway, 15" aft. FR 42. Bomb glanced off and exploded some distance away.



CONFIDENTIAL  
OFFICIAL PHOTOGRAPH  
FOR PUBLICATION  
NAVY YARD PEARL HARBOR, T. H.

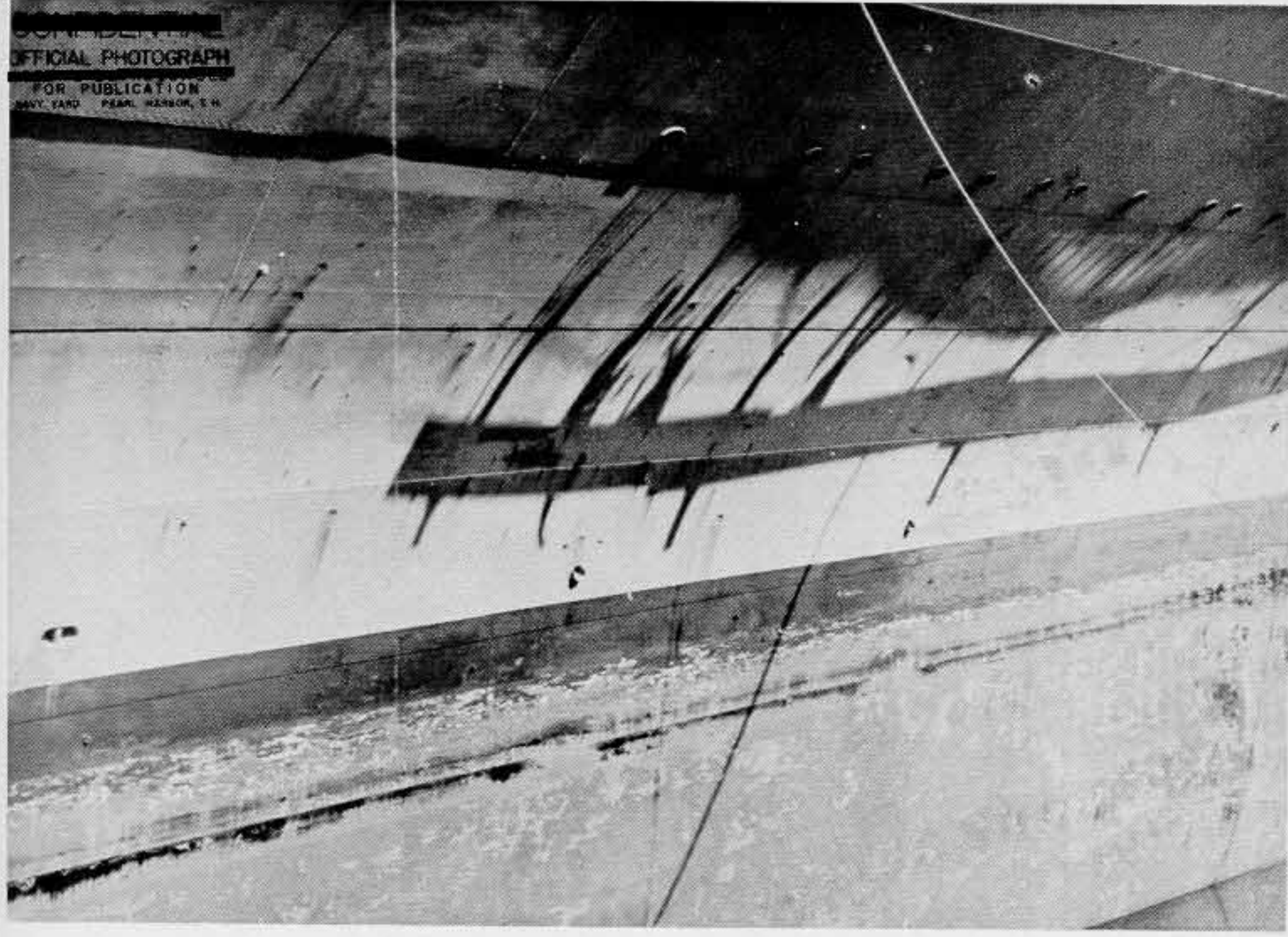


Photo 5: Bomb Fragment Damage, starboard shell, FRS 13-23.

OFFICIAL PHOTOGRAPH  
NAVY YARD PEARL HARBOR, T. H.

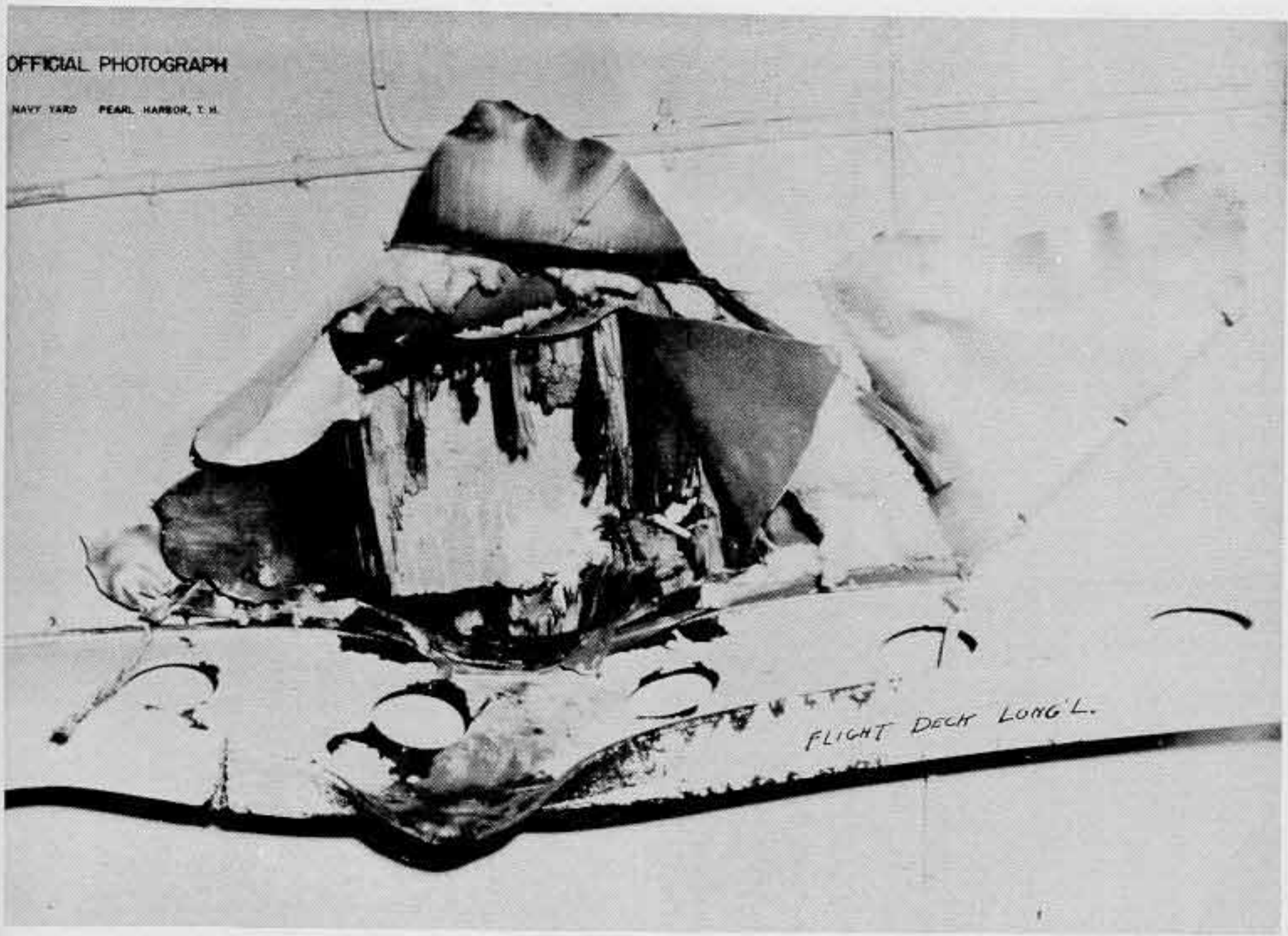


Photo 6: Bomb Entry Hole, Flight Deck, looking up. Note failure of butt weld in face plate.



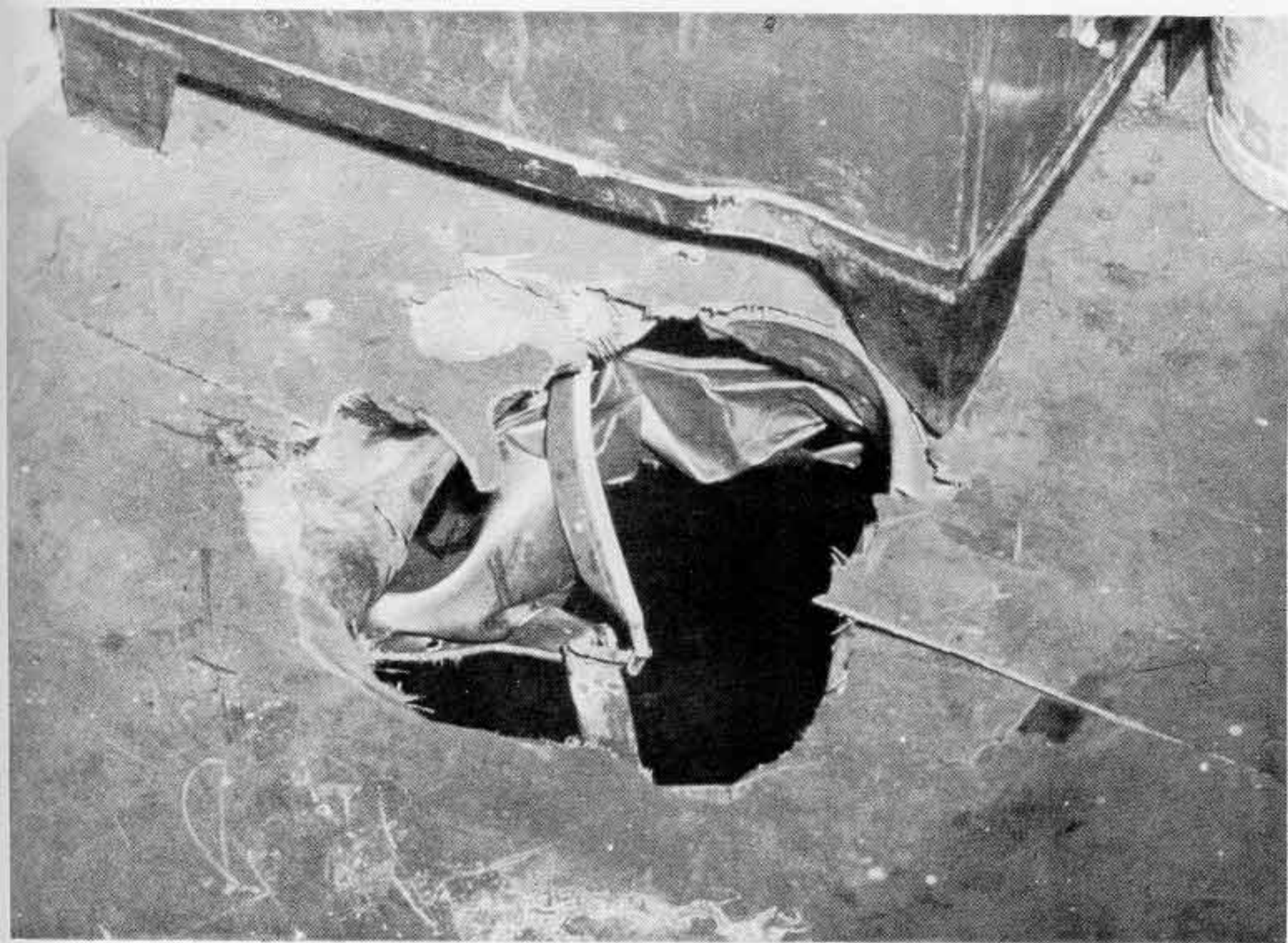


Photo 7: Bomb Hole, Gallery Deck, FR 108, looking down.



Photo 8: Bomb Hole, Main Deck, FR 107 1/2 looking down.



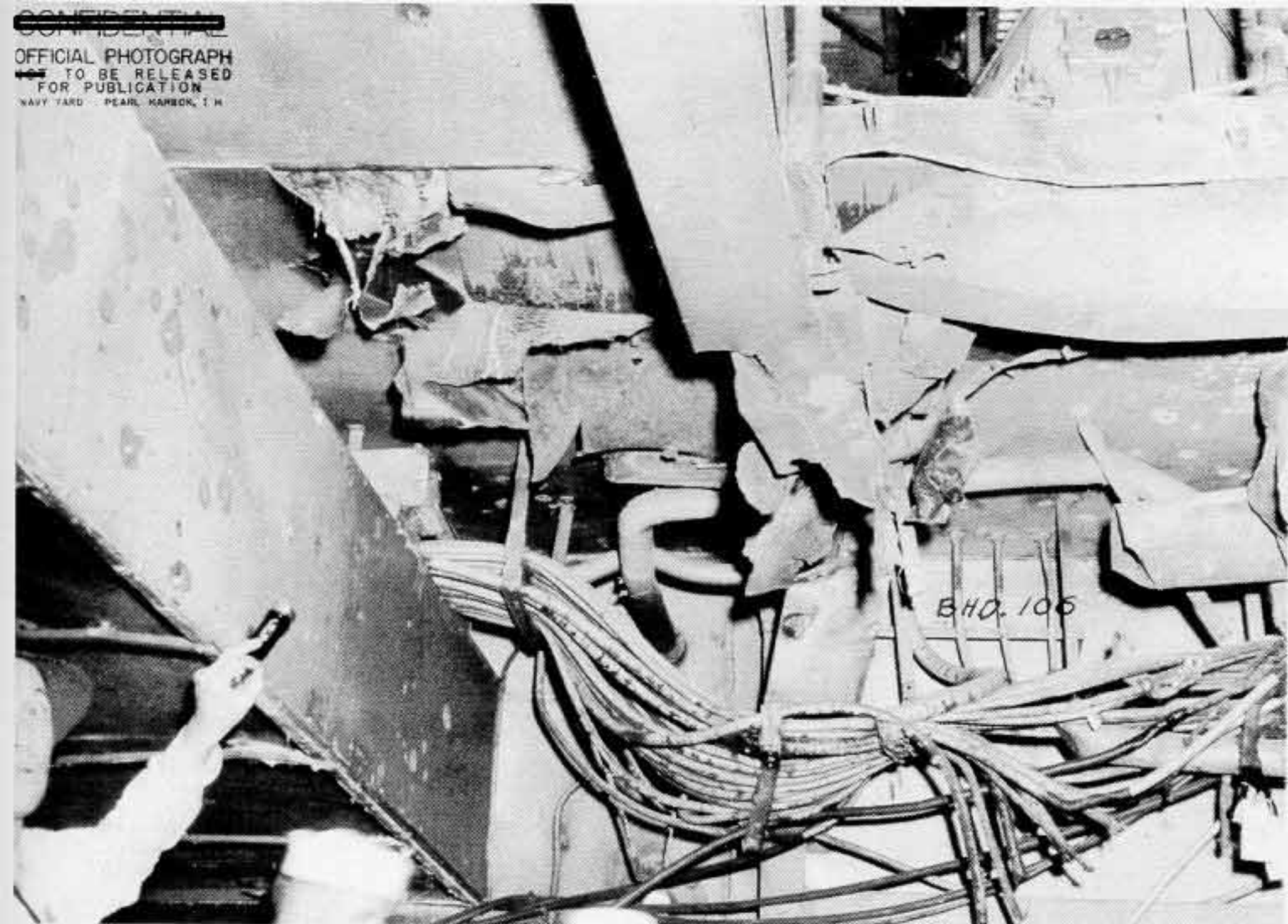


Photo 9: Bomb Hole, Main Deck, FR 107 1/2, looking forward and up. Note severed deck longitudinal.



Photo 10: Bomb Hole, Second Deck, FR 107, looking forward and up. Note after inboard corner of transverse access trunk C-501-3T which deflected bomb inboard.



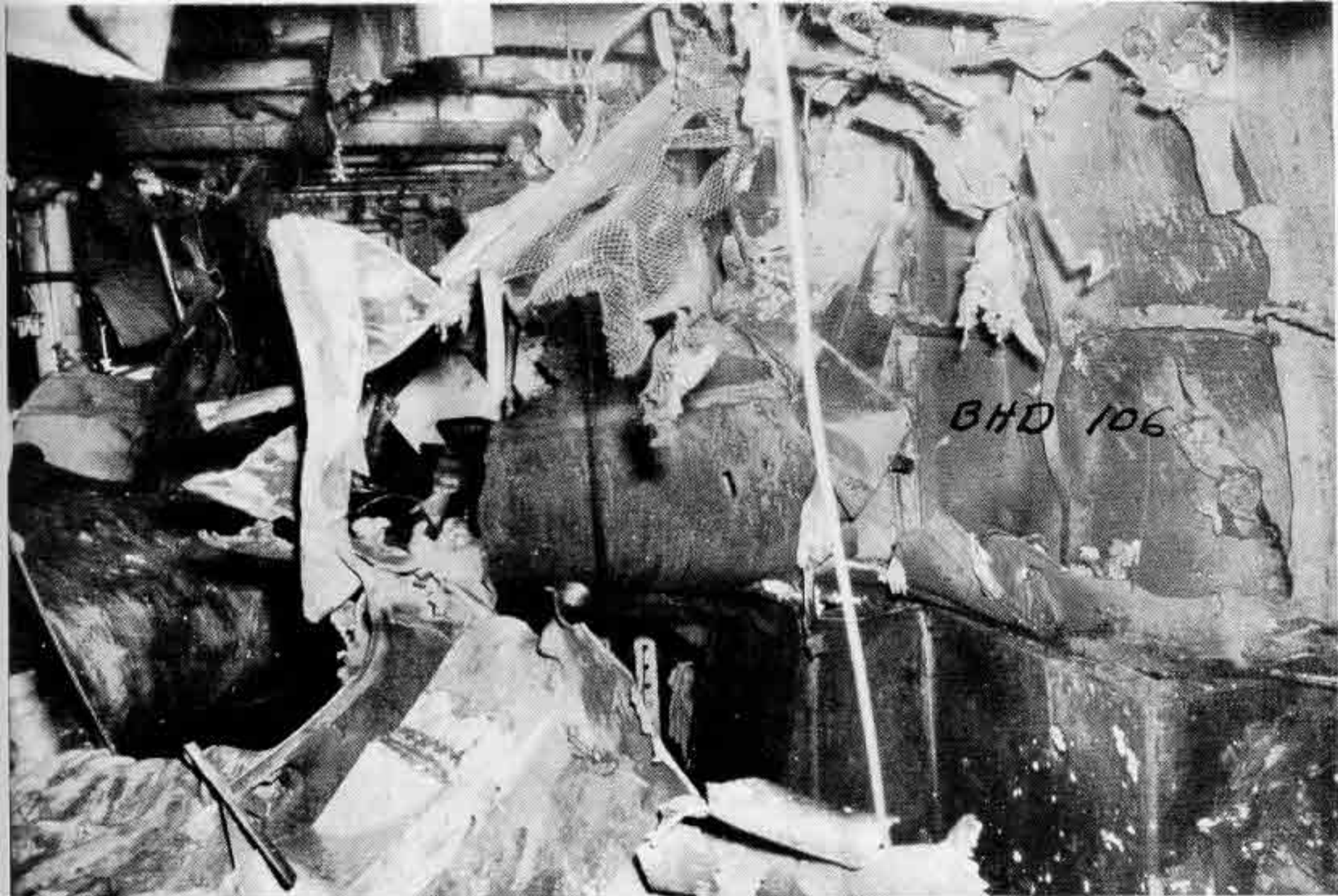


Photo 11: Blast Hole in Third Deck and Damage to Bulkhead 106. Looking forward and to port. Explosion occurred just below third deck in this area.



Photo 12: Blast Hole in Third Deck. Some wreckage cleared away. Looking forward and down.



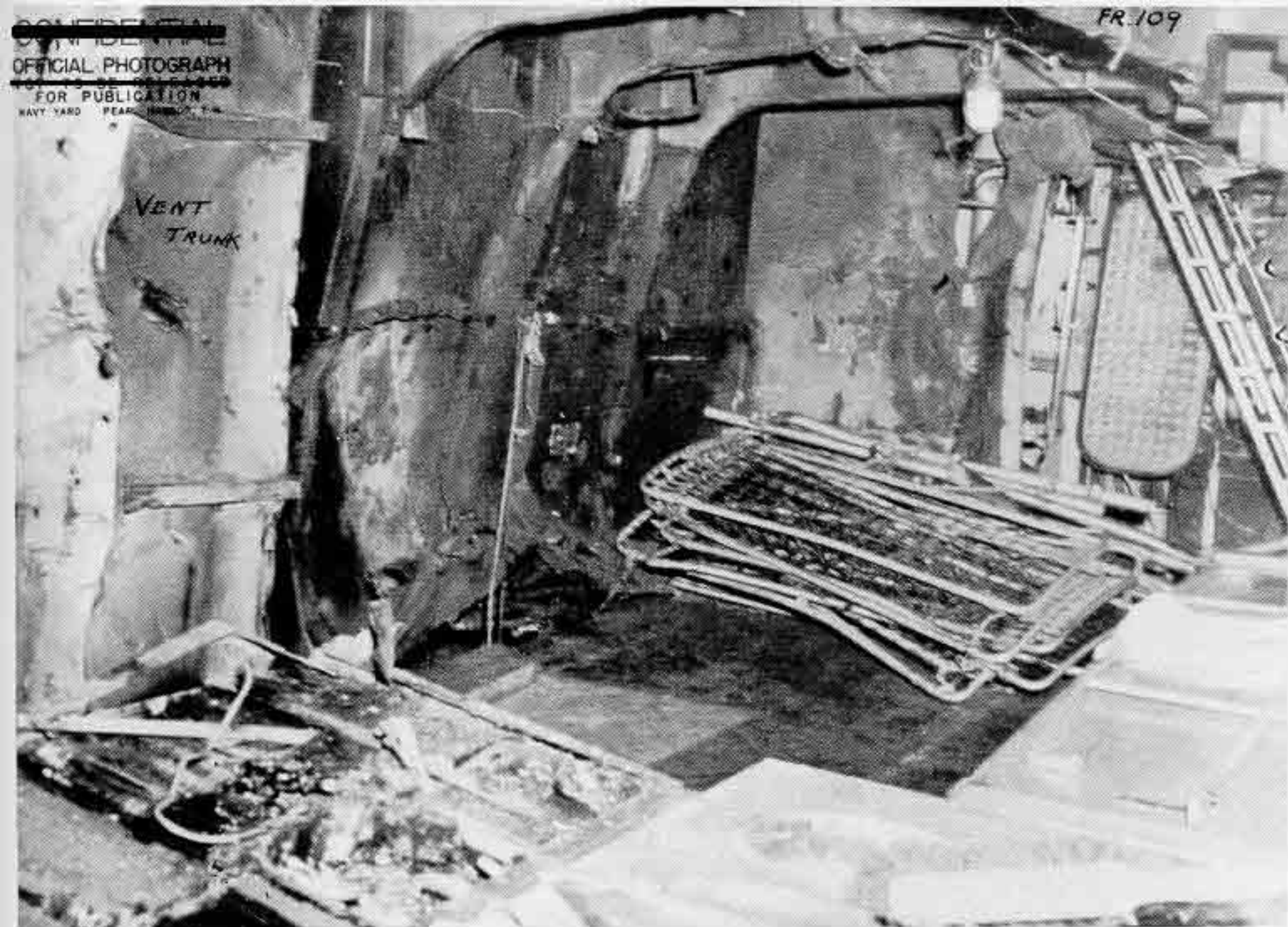


Photo 13: Damage to Bulkhead 106, between 3rd and 2nd decks, looking forward and outboard. Note partially collapsed ventilation trunk at left and distortion of web frame 109, upper right.

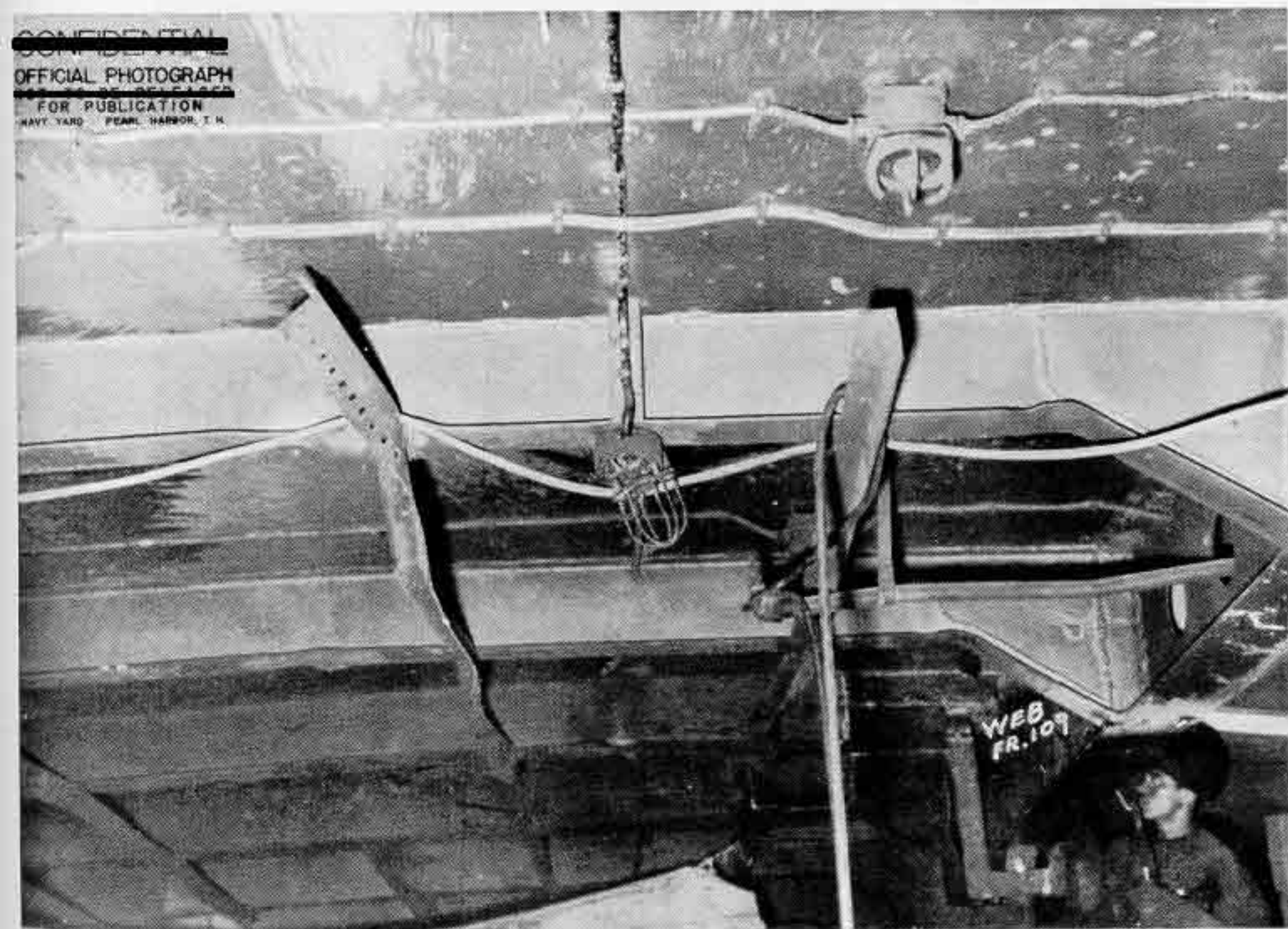


Photo 14: Underside of 3rd deck, looking inboard and to port. Note upward deflection of deck and longitudinals.





Photo 15: Damage to Bulkhead 106, between 4th and 3rd decks, looking forward and inboard.



Photo 16: Damage to Bulkhead 106, between 4th and 3rd decks, looking aft.





OFFICIAL PHOTOGRAPH  
NOT TO BE RELEASED  
FOR PUBLICATION  
NAVY YARD PEARL HARBOR, T. H.

Photo 17: Between 4th and 3rd decks, looking forward and to starboard. Note that 4th (armored) deck is undamaged and that web frame 109 is virtually cut in two.



Photo 18: Damage on 4th deck, looking forward and to starboard. Note inboard longitudinal bulkhead of trunk C-401-T has been blown out. Laundry storeroom is forward of hole in bulkhead 106.





Photo 19: Web FR 109, underneath 3rd deck, looking to port.

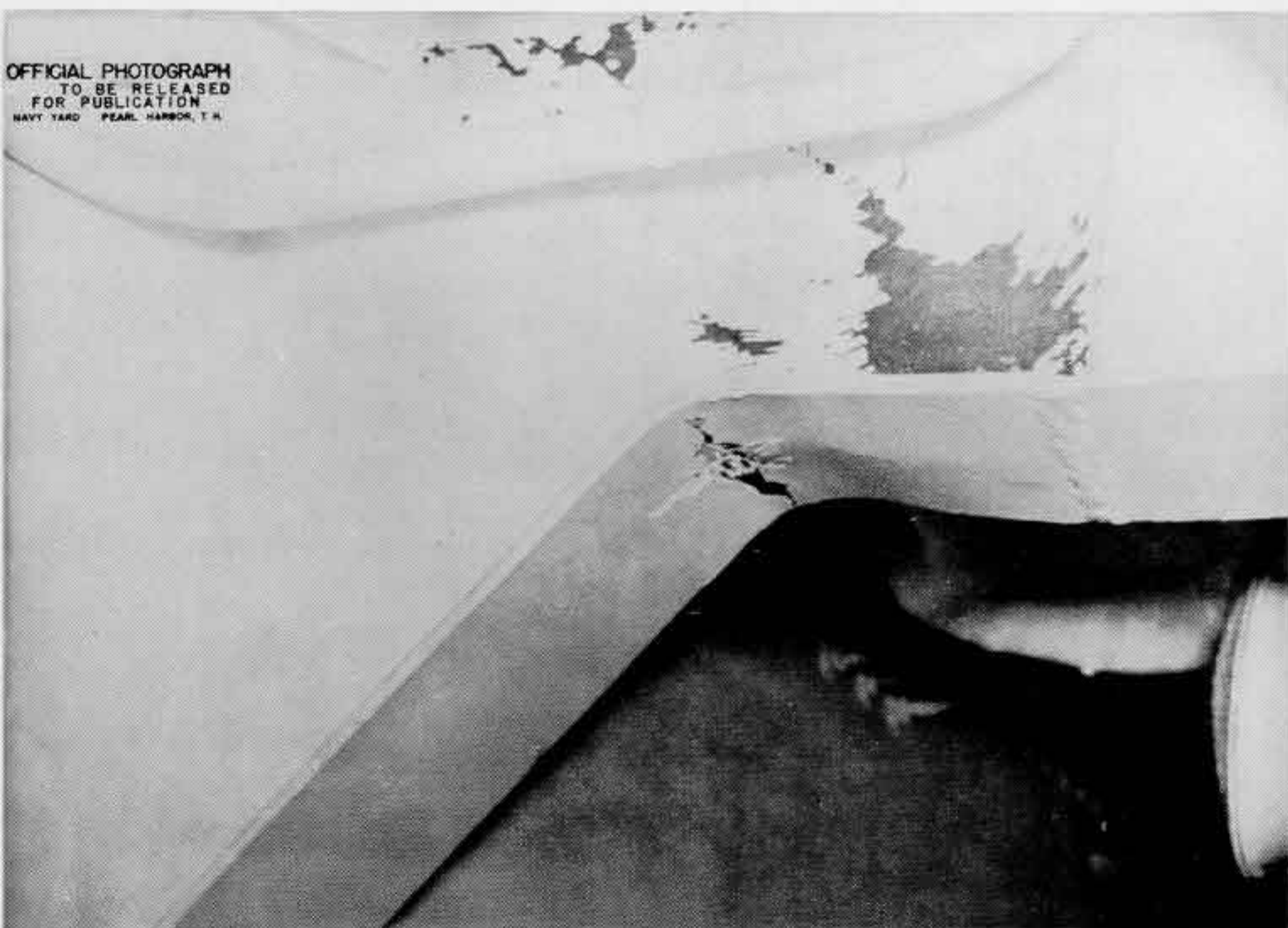
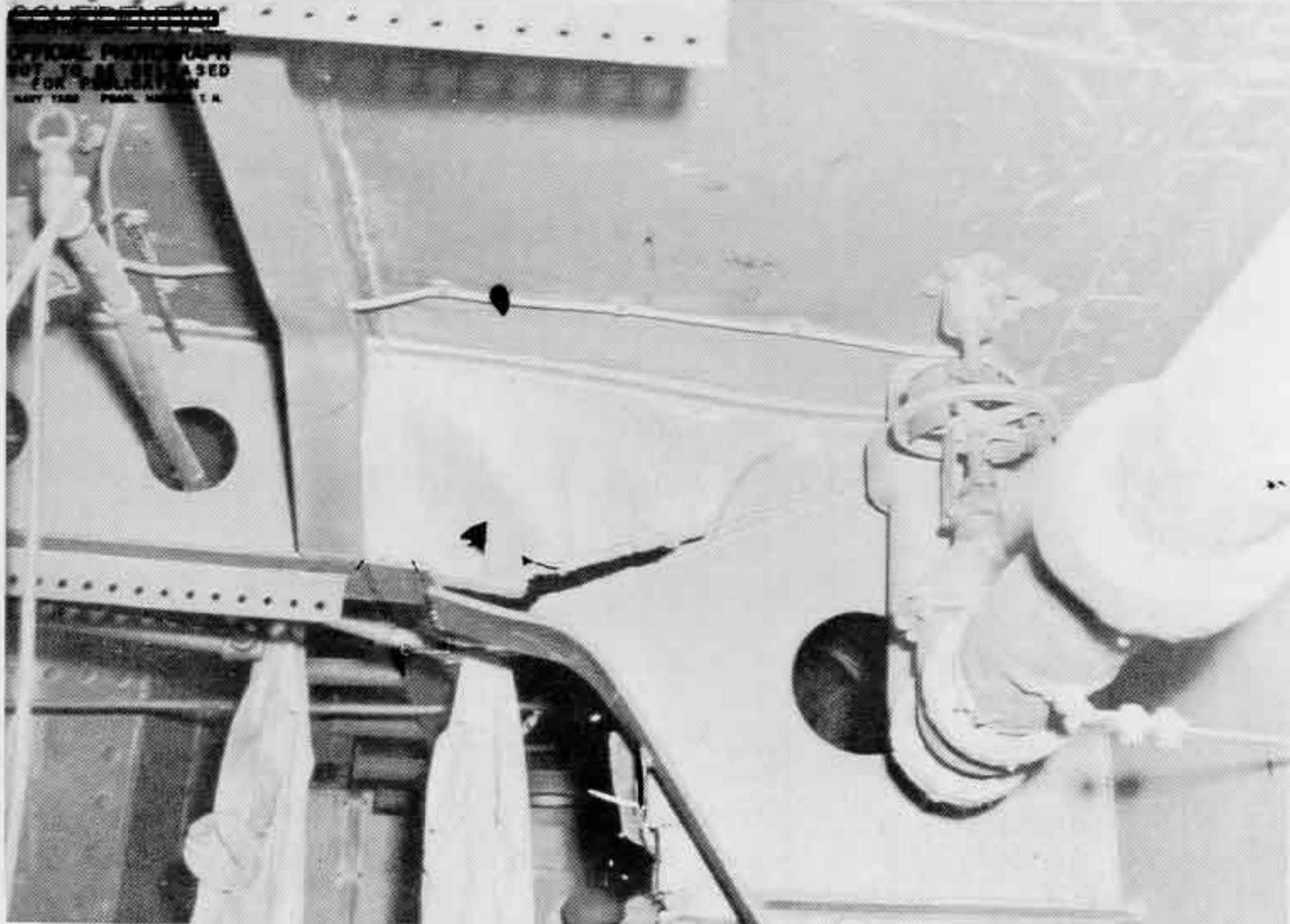


Photo 20: Web FR 109, underneath 3rd deck, outboard bracket to starboard longitudinal bulkhead, looking forward.





OFFICIAL PHOTOGRAPH  
NOT TO BE RELEASED  
FOR PUBLICATION  
NAVY YARD PEARL HARBOR, T. H.

Photo 21: Web FR 109, underneath 3rd deck, inboard bracket to starboard longitudinal bulkhead, looking forward. Note rupture of weld and tear in flange.



OFFICIAL PHOTOGRAPH  
TO BE RELEASED  
FOR PUBLICATION  
NAVY YARD PEARL HARBOR, T. H.

Photo 22: Web FR 109, underneath 2nd deck, bracket to starboard shell, looking forward. Note rupture at weld.



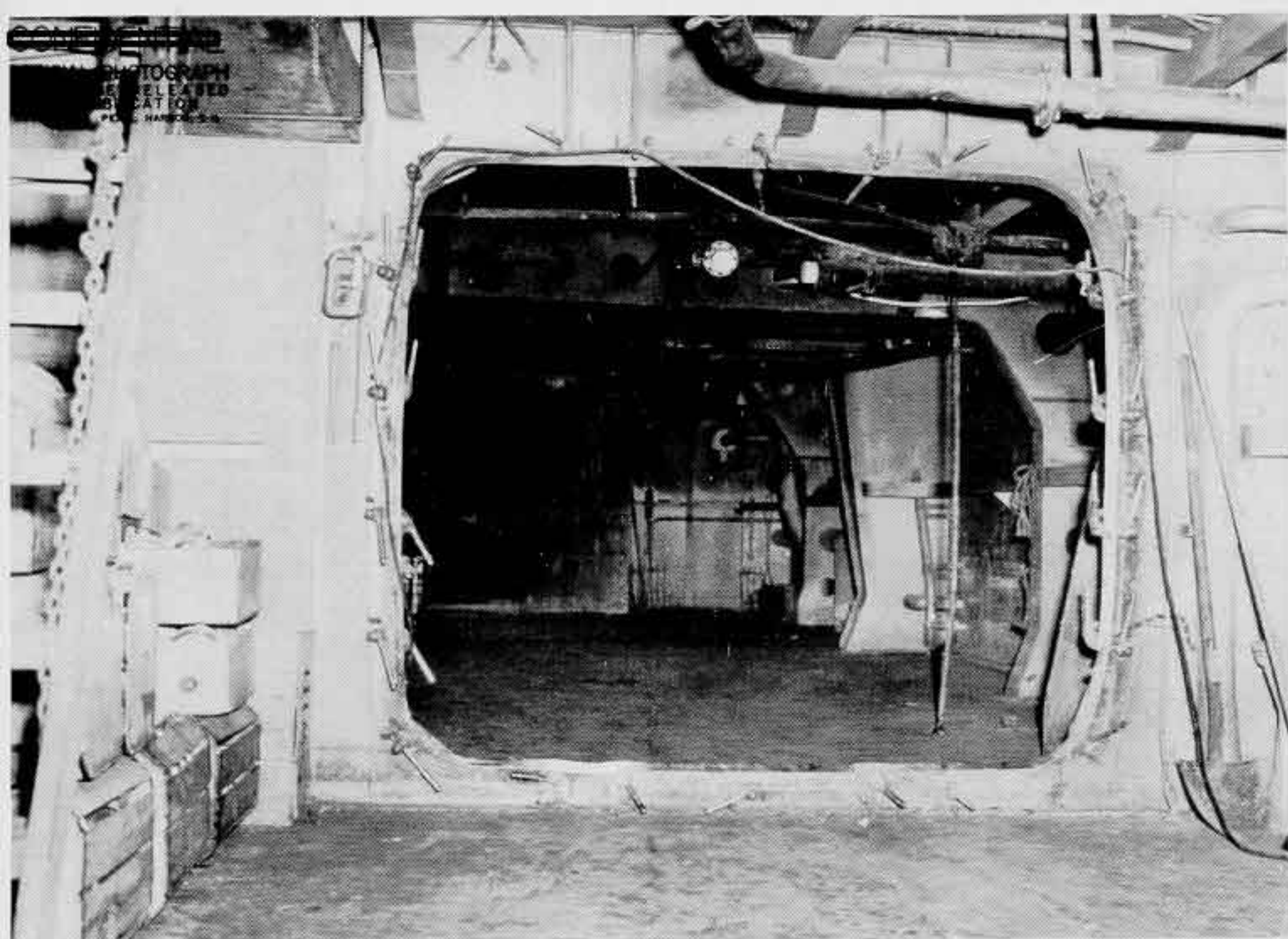


Photo 23: Frame for double size door in bulkhead 118, 4th deck, starboard, looking forward. This door opened forward. Note frame around entire periphery is bent aft. Explosion occurred in space just forward of door.

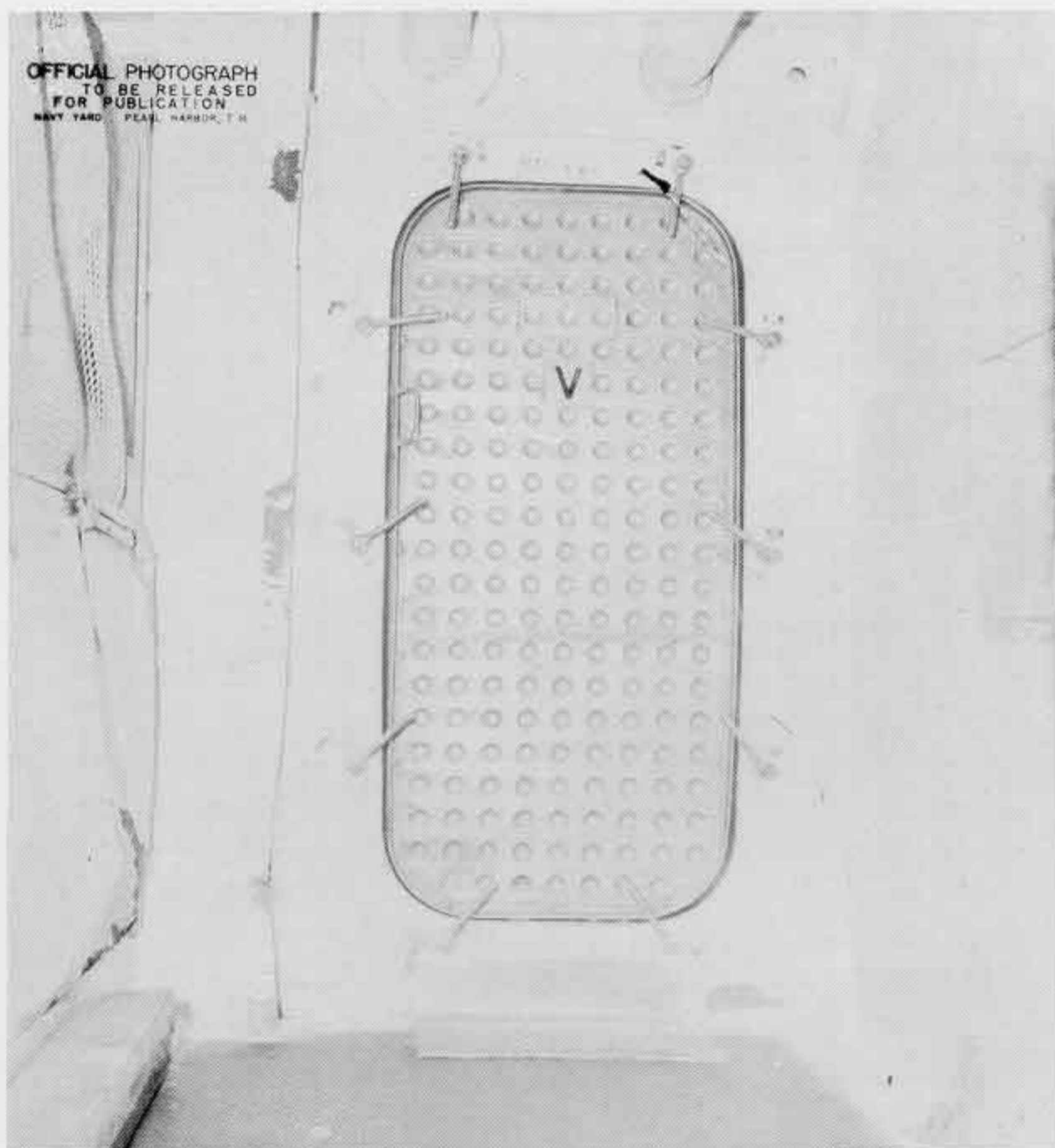


Photo 24: Watertight door, bulkhead 112, starboard side, 3rd deck. Note door and bulkhead are dished aft, but not ruptured. Note crumpling of sheet and expanded metal bulkhead at left.



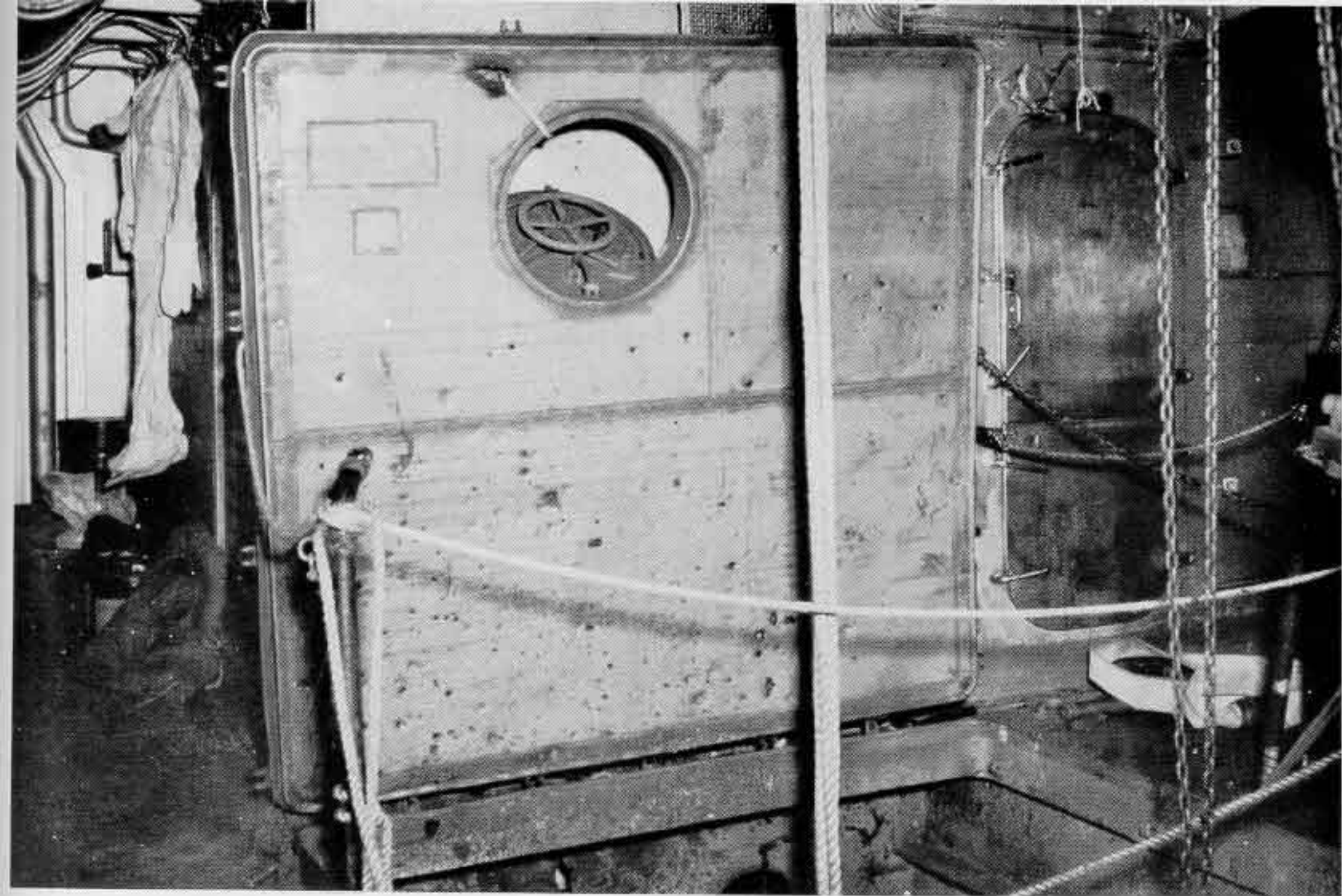


Photo 25: Fragment damage to main deck hatch, FRS 107-109, starboard, immediately above explosion.



Photo 26: Bomb blast hole, second deck, FRS 106-107, starboard.





Photo 27: Refrigerator door, 4th deck, 13'-0" to starboard of centerline, FRS 127-129. Note deflection. This was 80' aft of explosion.

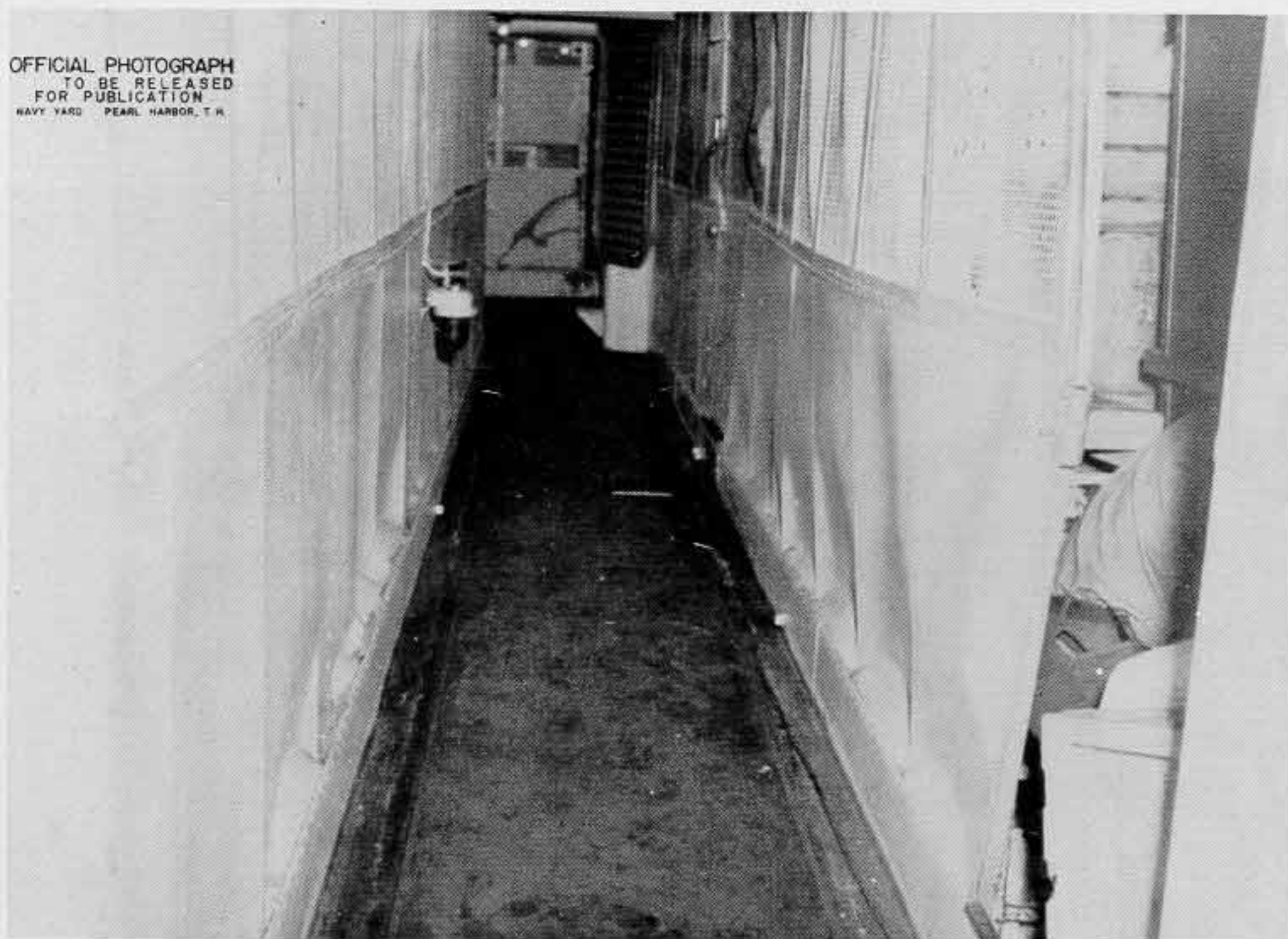


Photo 28: Athwartships passage, 3rd deck, FRS 115 1/2-116 1/2, looking to starboard. Damaged sheet and expanded metal bulkheads are aft of W.T. bulkhead 112 which remained tight.



**CONFIDENTIAL**

OFFICIAL PHOTOGRAPH  
NOT TO BE RELEASED  
FOR PUBLICATION  
MAY 1950 PEARL HARBOR, T.H.

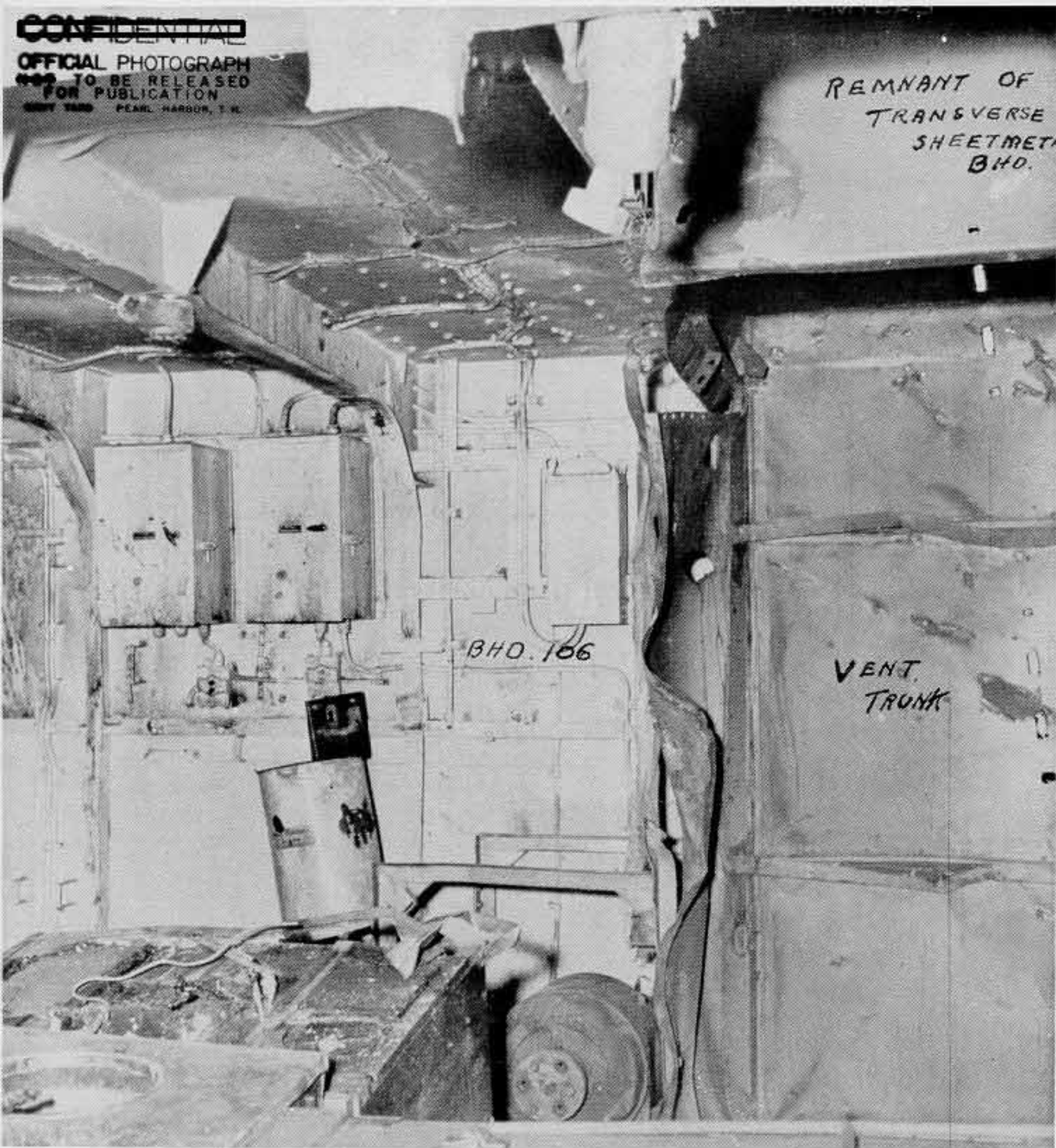
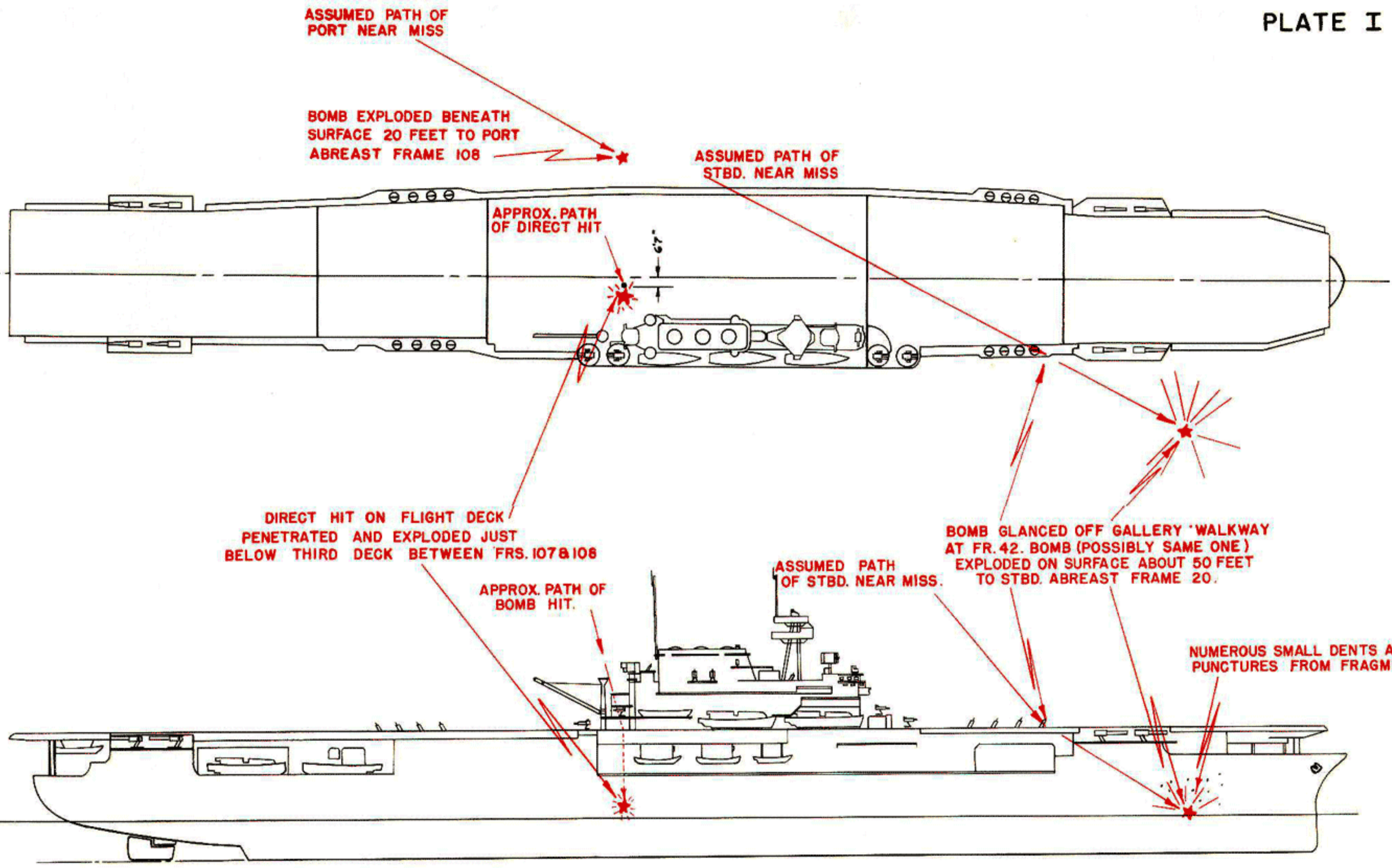


Photo 29: Bulkhead 106, between 3rd and 2nd decks, looking forward.



Photo 30: Fragment damage, starboard longitudinal bulkhead, second deck, FRS 106-109, looking forward.



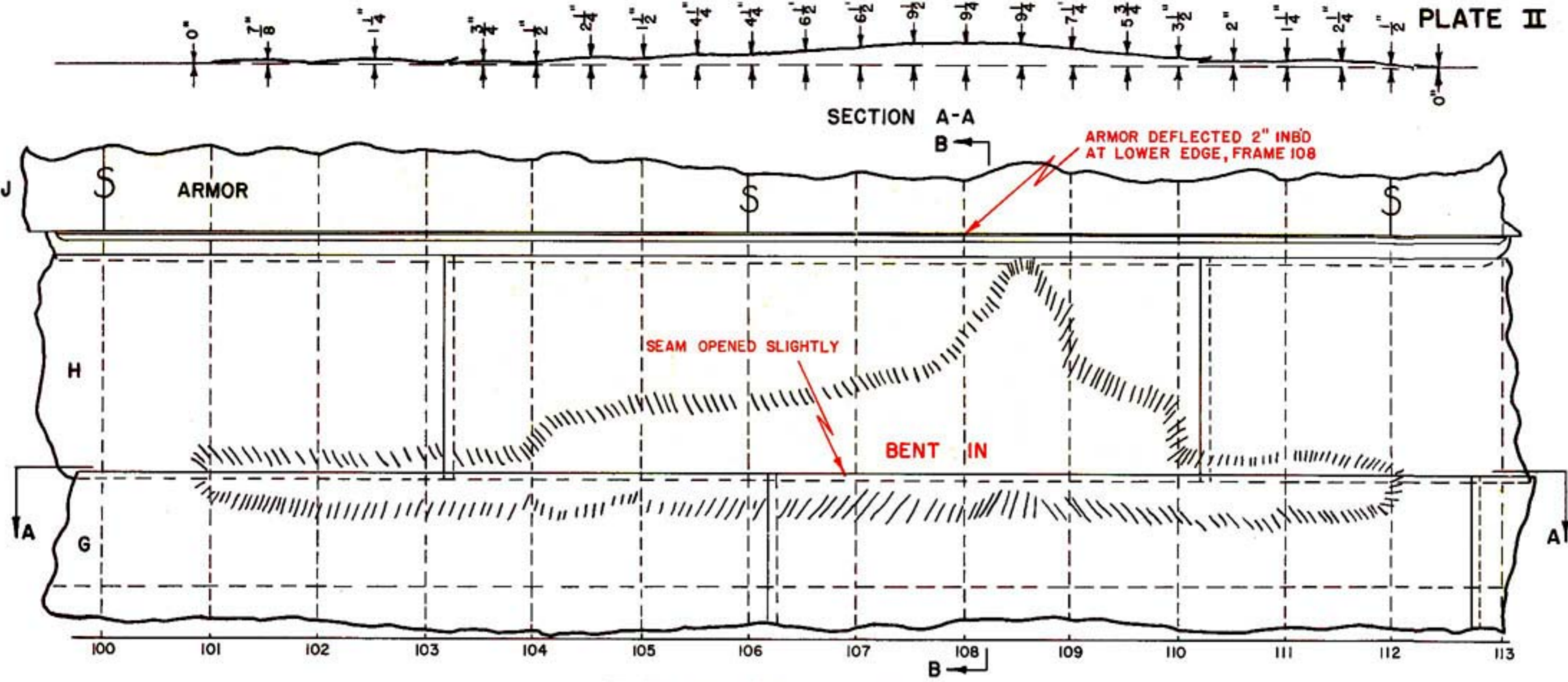


A.P. 190 180 170 160 150 140 130 120 110 100 90 80 70 60 50 40 30 20 10 F.P.

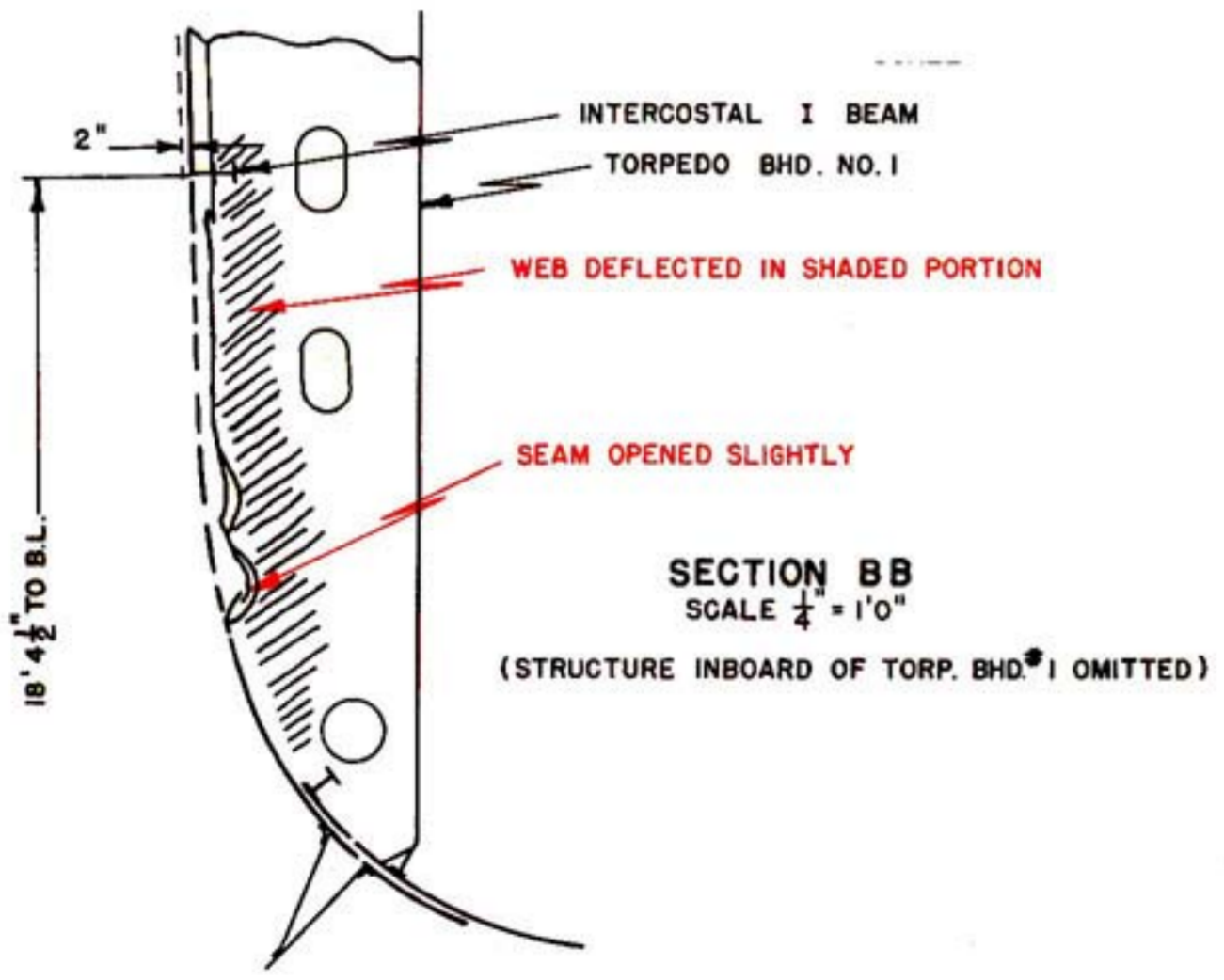
U.S.S. YORKTOWN CV-5  
 BOMB DAMAGE  
 CORAL SEA --- 8 MAY 1942  
 NAVY DEPT. --- BUREAU OF SHIPS  
*F.E. Haerberle*

11/28/42





ELEVATION OF DAMAGE TO SHELL  
 PORT SIDE LOOKING TO STBD.  
 SCALE  $\frac{1}{4}'' = 1'0''$



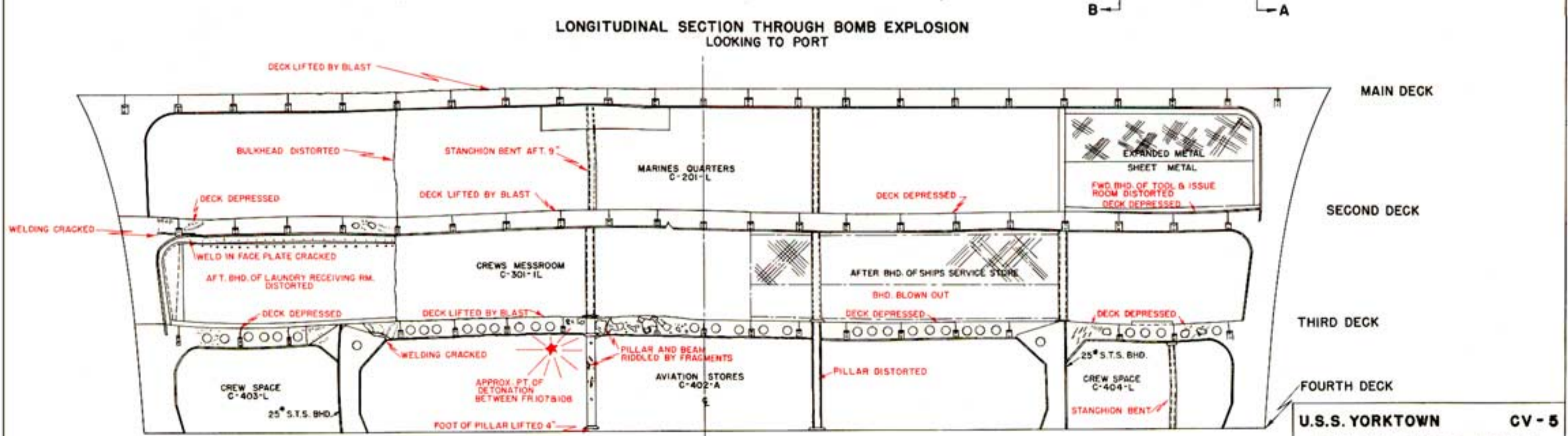
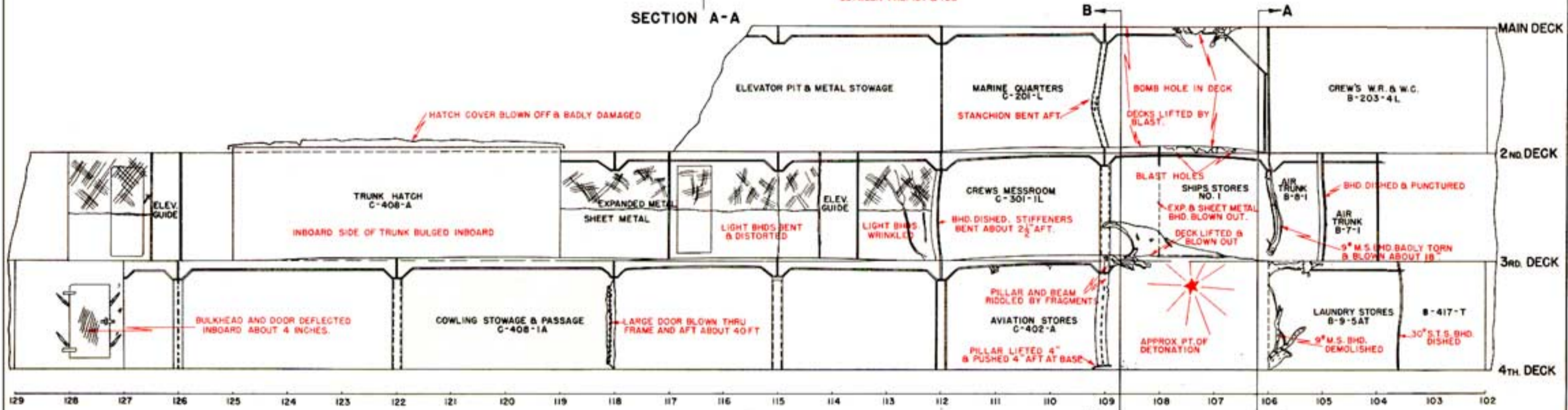
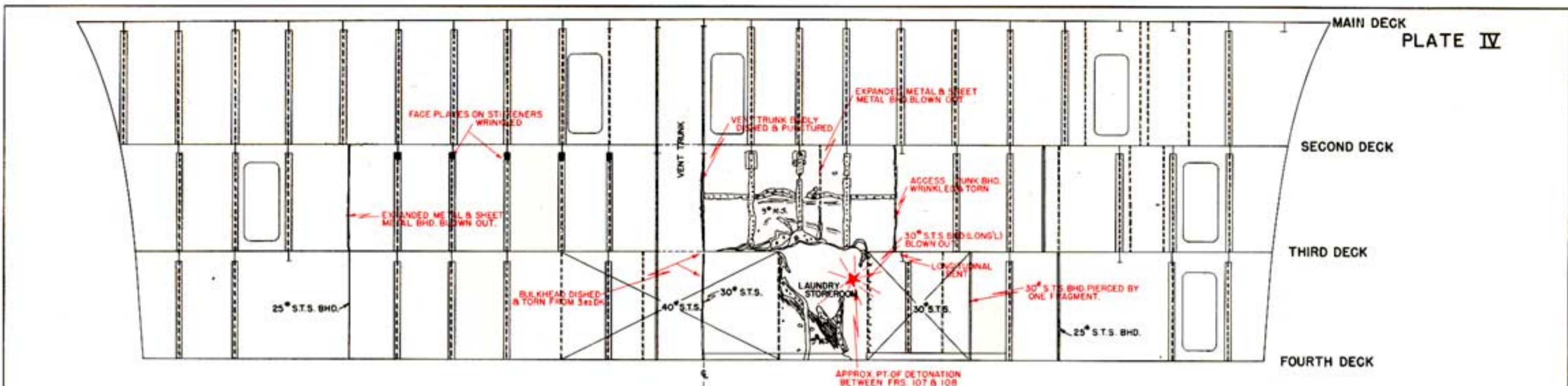
SECTION BB  
 SCALE  $\frac{1}{4}'' = 1'0''$   
 (STRUCTURE INBOARD OF TORP. BHD. NO. 1 OMITTED)

U.S.S. YORKTOWN CV-5  
 PORT SIDE NEAR MISS  
 CORAL SEA --- 8 MAY 1942  
 NAVY DEPT. --- BUREAU OF SHIPS  
*F.L. Haas*  
 11/28/42









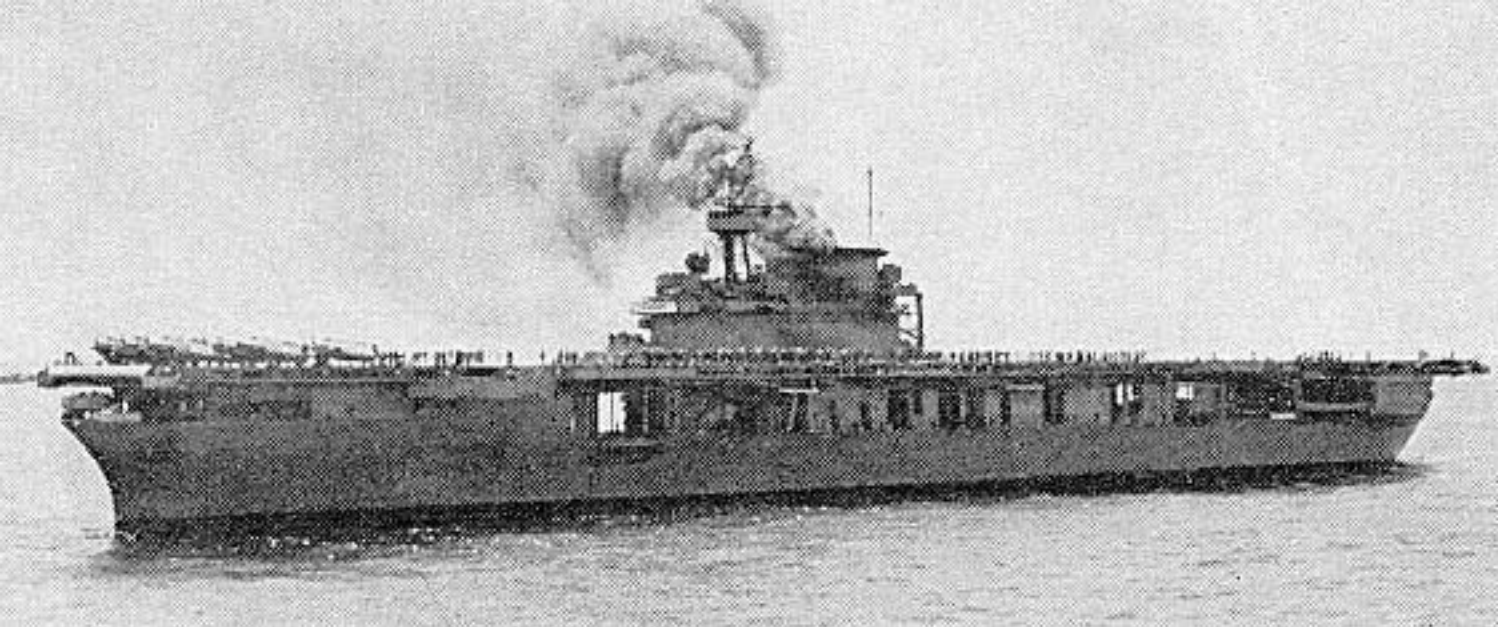
**U.S.S. YORKTOWN CV-5**  
**BOMB HIT DAMAGE - PART II**  
 CORAL SEA ----- 8 MAY 1942  
 NAVY DEPT. ----- BUREAU OF SHIPS  
*J. E. Haskin*



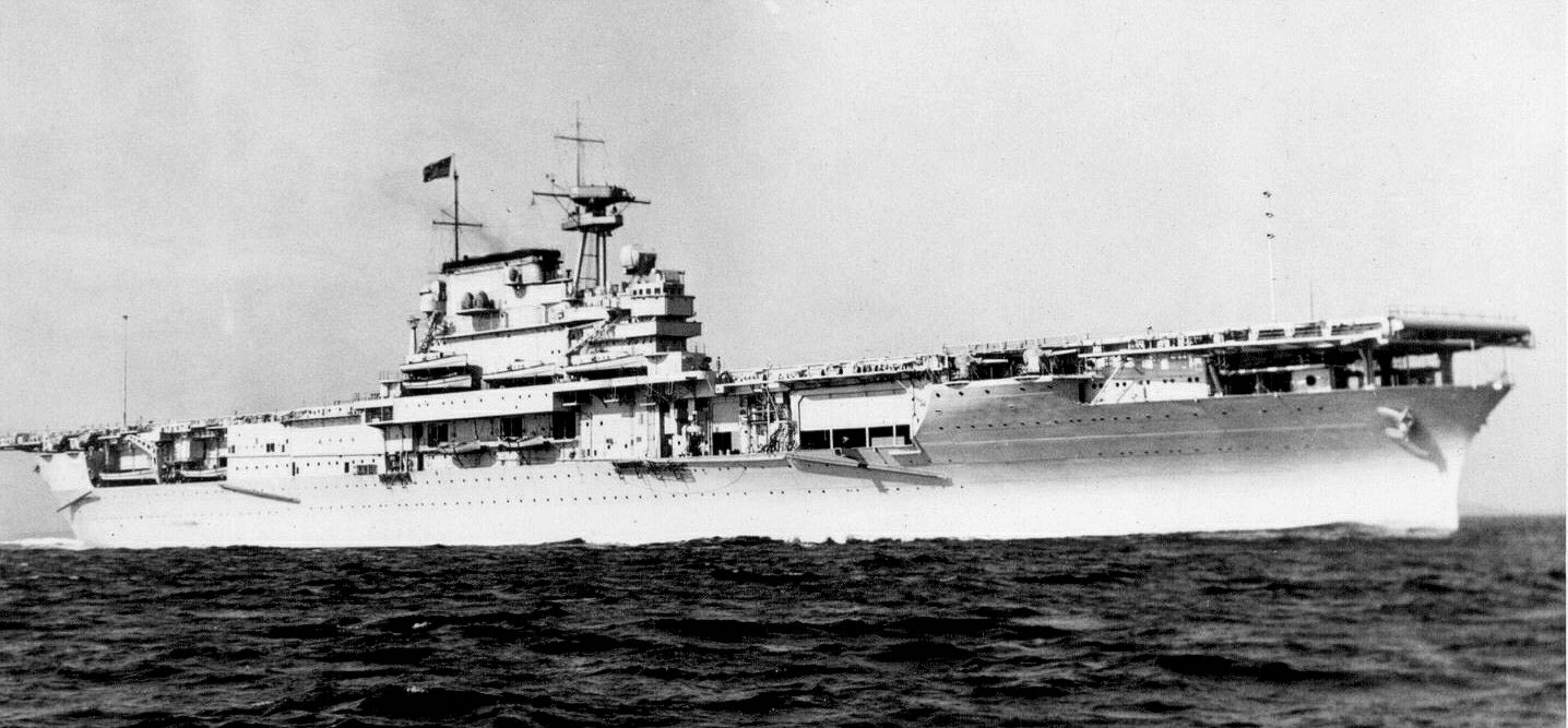
Photo # 80-G-651042 USS Yorktown at NAS North Island, 1940













CV-5 USS Yorktown Dry Dock Pearl Harbor after Battle of Coral Sea

